

West Bridger North Travel Planning Area

A. Alternative Travel Area Goals, Objectives, Standards and Guidelines

Travel Planning Area Direction Under Alternative 1

Alternative 1 is the “no action” alternative. There would be no changes to current management direction applicable to travel management.

Travel Planning Area Direction Under Alternatives 2 through 7-M

GOAL 1: Summer Recreation Use. Provide a summer recreation opportunity emphasizing a low level of motorcycle use on certain trails. *This goal is applicable to Alternatives 2 through 7-M.*

OBJ. 1-1a: Manage the road and trail system to provide for the following types of summer recreation use. *This objective is applicable to Alternatives 2 through 6, however, the amount of opportunity varies among alternatives as shown in the following table. The column for Alternative 7-M is provided for information only.*

Table II – 141 Summary of Summer Opportunities By Miles							
All mileages are approximate							
Recreation Opportunity	Alt. 1	Alt. 2	Alt. 3	Alt. 4	Alt. 5	Alt. 6	Alt. 7-M
Pleasure Driving							
Miles of Road	0	0	0	0	0	0	0
Backcountry Roads (4x4)							
Miles of Road	7	7	7	7	7	7	7
ATV							
Miles of Road	0	0	6	6	6	6	8
Miles of Trail	24	0	1	1	0	0	4
Total Miles	24	0	7	7	6	6	12
Motorcycle							
Miles of Road	0	0	0	0	0	0	0
Miles of Trail	0	24	28	12	0	0	14
Total Miles	0	24	28	12	0	0	14
Mountain Bike (Use Emphasized)							
Miles of Road	7	7	0	0	0	0	0
Miles of Trail	24	24	6	6	6	6	14
Total Miles	31	31	6	6	6	6	14
Mountain Bike (Use Allowed)							
Miles of Trail	0*	0*	18	18	18	18	10
Pack and Saddle Stock (Use Emphasized)							
Miles of Trail	24	24	28	28	28	28	28
Pack and Saddle Stock (Use Allowed)							
Miles of Trail	0*	0*	0**	0**	0**	0**	0**
Hiking (Use Emphasized)							
Miles of Trail	24	24	32	32	32	32	33

Table II – 141 Summary of Summer Opportunities By Miles							
All mileages are approximate							
Recreation Opportunity	Alt. 1	Alt. 2	Alt. 3	Alt. 4	Alt. 5	Alt. 6	Alt. 7-M
Hiking (Use Allowed)							
Miles of Trail	0*	0*	0*	0*	0*	0*	0*
* Use for this activity is not prohibited on any trails; use is either emphasized or allowed.							
** Use for this activity is prohibited on some trails.							

OBJ. 1-1b: Achieve the summer recreation opportunities identified in GOAL 1 through the route-by-route management decisions made through this Travel Plan. Any future proposals to change the uses specified should be done in consideration of the targeted recreation setting to be provided [see the “Recreation Opportunity Spectrum” (ROS) map for summer uses under Alternative 7-M] which is hereby incorporated by reference. *This objective applies to Alternative 7-M only.*

OBJ. 1-2: Provide an additional motorized loop trail route within Johnson Canyon. *This objective is applicable to Alternatives 3, 4, 6 and 7-M. This objective does not apply to Alternative 2, because it is designed to be similar to the no action alternative and investments in new routes are minimal. This objective does not apply to Alternative 5, where emphasis on wildlife habitat is of higher priority.*

OBJ. 1-3: Provide a non-motorized connector trail from North Cottonwood to Johnson Canyon. *This objective is applicable to Alternatives 2 through 7-M.*

GOAL 2: Winter Recreation Use. There is no winter recreation use opportunity goal for this Travel Planning Area. *This is applicable to Alternatives 2 through 7-M. The following tables are provided for information only.*

Table II – 142 Summary of Winter Opportunities In Miles							
All mileages are approximate							
Recreation Opportunity	Alt. 1	Alt. 2	Alt. 3	Alt. 4	Alt. 5	Alt. 6	Alt. 7-M
Pleasure Driving (Plowed Road)							
Miles of Plowed Road	0	0	0	0	0	0	0
Snowmobiling							
Miles of Groomed Trail	0	0	0	0	0	0	0
Miles of Marked Trail	0	0	0	0	0	0	0
Total Miles	0	0	0	0	0	0	0
Cross-country Skiing							
Miles of Groomed Trail	0	0	0	0	0	0	0
Miles of Marked Trail	0	0	0	0	0	0	0
Total Miles	0	0	0	0	0	0	0

Table II - 143 Summary of Area Restrictions - Acres							
Recreation Opportunity	Alt. 1	Alt. 2	Alt. 3	Alt. 4	Alt. 5	Alt. 6	Alt. 7-M
Snowmobiling							
Yearlong Closure							
Wilderness	0	0	0	0	0	0	0
Non-Wilderness	0	0	680	680	21,044	680	2,111

Table II - 143 Summary of Area Restrictions - Acres

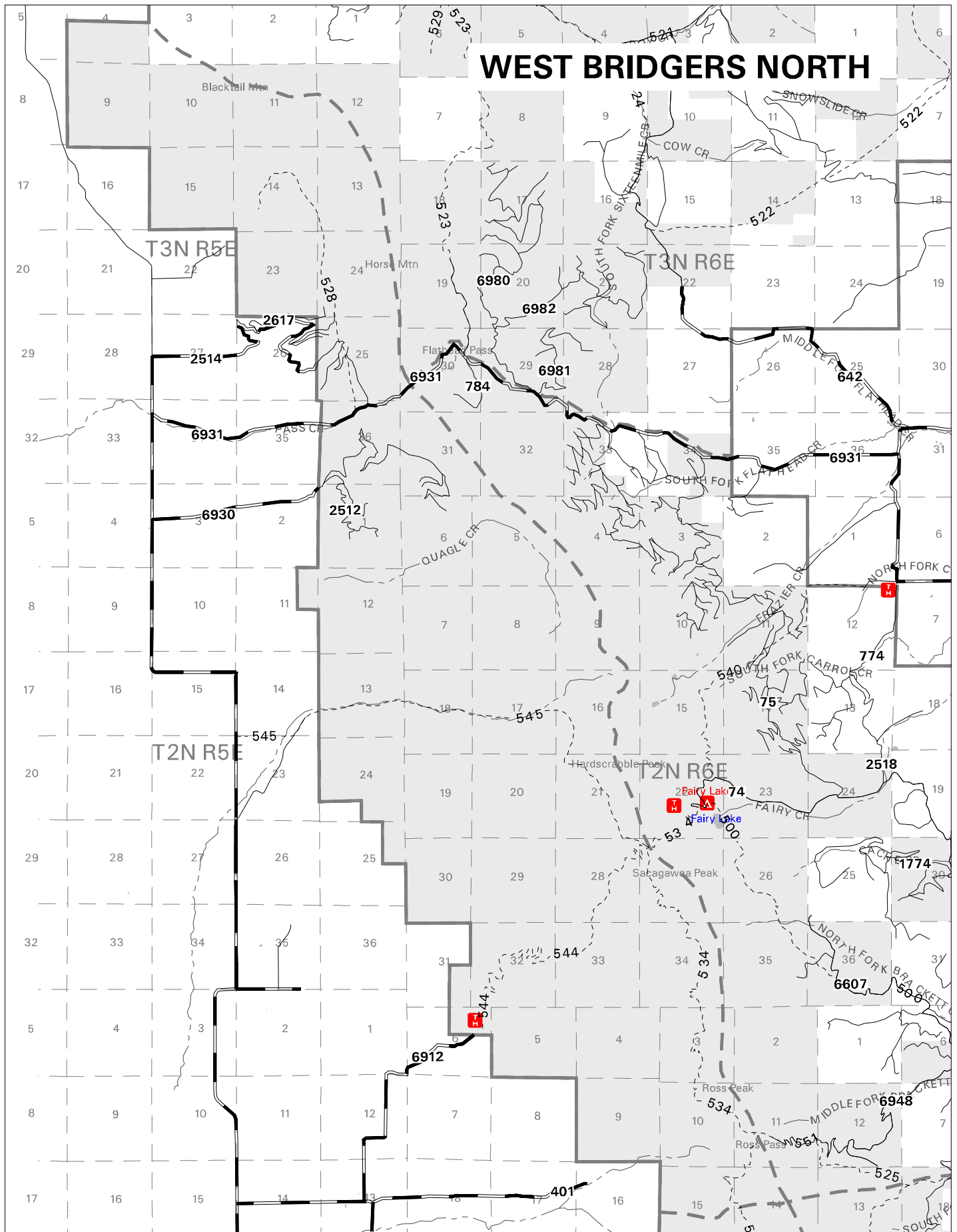
Recreation Opportunity	Alt. 1	Alt. 2	Alt. 3	Alt. 4	Alt. 5	Alt. 6	Alt. 7-M
Seasonal Closure <u>2/</u>							
Wilderness	0	0	0	0	0	0	0
Non-Wilderness	83	83	83	83	0	83	18
No Restrictions							
Wilderness	0	0	0	0	0	0	0
Non-Wilderness	23,075	23,075	22,395	22,395	2,114	22,395	21,029
Net	23,158	23,158	23,158	23,158	23,158	23,158	23,158

2/ Note: Seasonal restrictions are displayed under the route-by-route management section.

B. Alternative Route-By-Route Management

[See attached table.](#)

This page left blank intentionally.



WEST BRIDGERS NORTH