

Main Boulder Travel Planning Area

A. Alternative Travel Area Goals, Objectives, Standards and Guidelines

Travel Planning Area Direction Under Alternative 1

Alternative 1 is the “no action” alternative. There would be no changes to current management direction applicable to travel management.

Travel Planning Area Direction Under Alternatives 2 through 7-M

GOAL 1: Summer Recreation Use. Provide opportunities for summer recreation use with an emphasis on pleasure driving and passenger vehicle access to destination recreation sites. Accommodate limited use by high-clearance vehicles. *This goal is applicable to Alternatives 2 through 7-M.*

OBJ. 1-1a: Manage the road and trail system to provide for the following types of summer recreation use. *This objective is applicable to Alternatives 2 through 6. The column for Alternative 7-M is provided for information only.*

Table II – 101 Summary of Summer Opportunities By Miles							
All mileages are approximate							
Recreation Opportunity	Alt. 1	Alt. 2	Alt. 3	Alt. 4	Alt. 5	Alt. 6	Alt. 7-M
Pleasure Driving							
Miles of Road	2	2	2	2	2	2	2
Backcountry Roads (4x4)							
Miles of Road	1	1	1	1	1	1	1
ATV							
Miles of Road	0	0	0	0	0	0	0
Miles of Trail	5	10	0	0	0	0	0
Total Miles	5	10	0	0	0	0	0
Motorcycle							
Miles of Road	0	0	0	0	0	0	0
Miles of Trail	0	2	4	0	0	0	0
Total Miles	0	2	4	0	0	0	0
Mountain Bike (Use Emphasized)							
Miles of Road	5	5	0	0	0	0	0
Miles of Trail	22	12	4	4	4	4	4
Total Miles	27	17	4	4	4	4	4
Mountain Bike (Use Allowed)							
Miles of Trail	0*	0**	8	8	8	8	11
Pack and Saddle Stock (Use Emphasized)							
Miles of Trail	22	22	26	26	27	27	13
Pack and Saddle Stock (Use Allowed)							
Miles of Trail	0*	0*	0*	0*	0*	0*	8
Hiking (Use Emphasized)							
Miles of Trail	22	22	27	27	27	27	18

Table II – 101 Summary of Summer Opportunities By Miles							
All mileages are approximate							
Recreation Opportunity	Alt. 1	Alt. 2	Alt. 3	Alt. 4	Alt. 5	Alt. 6	Alt. 7-M
Hiking (Use Allowed)							
Miles of Trail	0*	0*	0*	0*	0*	0*	3
* Use for this activity is not prohibited on any trails; use is either emphasized or allowed.							
** Use for this activity is prohibited on some trails.							

OBJ. 1-1b: Achieve the summer recreation opportunities identified in GOAL 1 through the route-by-route management decisions made through this Travel Plan. Any future proposals to change the uses specified should be done in consideration of the targeted recreation setting to be provided [see the “Recreation Opportunity Spectrum” (ROS) map for summer uses under Alternative 7-M] which is hereby incorporated by reference. *This objective applies to Alternative 7-M only.*

OBJ. 1-2: In cooperation with the County provide a route for high clearance vehicles that connects the end of the improved road at Box Canyon to the Independence area. *This objective is applicable to Alternatives 2 through 7-M.*

OBJ. 1-3: Provide road access to the National Forest Boundary and across checkerboard private inholdings in the Burris Flat area. *This objective is applicable to Alternatives 2 through 7-M.*

GOAL 2: Winter Recreation Use. Provide a very limited opportunity for snowmobile use. *This goal is applicable to Alternatives 2 through 7-M.*

OBJ. 2-1a: Manage the road and trail system to provide for the following types of winter recreation use. *This objective is applicable to Alternatives 2 through 6. The column for Alternative 7-M is provided for information only.*

Table II – 102 Summary of Winter Opportunities In Miles							
All mileages are approximate							
Recreation Opportunity	Alt. 1	Alt. 2	Alt. 3	Alt. 4	Alt. 5	Alt. 6	Alt. 7-M
Pleasure Driving (Plowed Road)							
Miles of Plowed Road	6	6	6	6	6	6	6
Snowmobiling							
Miles of Groomed Trail	24	24	24	24	24	24	24
Miles of Marked Trail	0	0	0	0	0	0	0
Total Miles	24	24	24	24	24	24	24
Cross-country Skiing							
Miles of Groomed Trail	0	0	0	0	0	0	0
Miles of Marked Trail	0	0	0	0	0	0	0
Total Miles	0	0	0	0	0	0	0

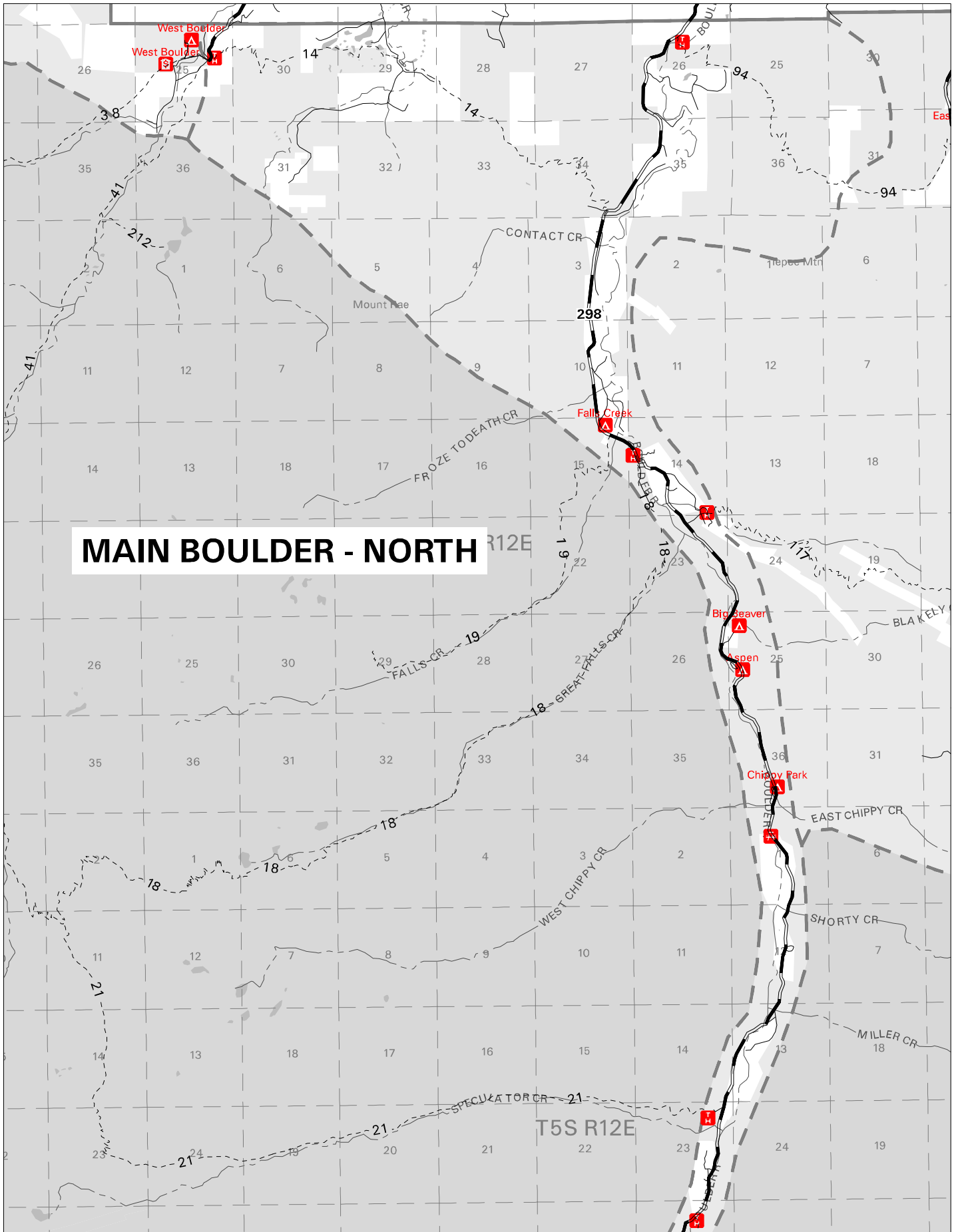
Table II - 103 Summary of Area Restrictions - Acres							
Recreation Opportunity	Alt. 1	Alt. 2	Alt. 3	Alt. 4	Alt. 5	Alt. 6	Alt. 7-M
Snowmobiling							
Yearlong Closure							
Wilderness	0	0	0	0	0	0	0
Non-Wilderness	0	0	231	231	575	231	0
Seasonal Closure <u>2/</u>							
Wilderness	0	0	0	0	0	0	0
Non-Wilderness	0	0	0	0	0	0	0
No Restrictions							
Wilderness	0	0	0	0	0	0	0
Non-Wilderness	16788	16788	16557	16557	16213	16557	16788
Net	16788	16788	16788	16788	16788	16788	16788
<u>2/</u> Note: Seasonal restrictions are displayed under the route-by-route management section.							

OBJ. 2-1b: Achieve the winter recreation opportunities identified in GOAL 2 through the marked and groomed route management decisions made through this Travel Plan along with decisions made on the area available to snowmobiles. Any future proposals to change the uses specified should be done in consideration of the targeted recreation setting to be provided [see the “Recreation Opportunity Spectrum” (ROS) map for winter uses under Alternative 7-M] which is hereby incorporated by reference. *This objective applies to Alternative 7-M only.*

B. Alternative Route-By-Route Management

[See attached table.](#)

This page left blank intentionally.



This page left blank intentionally.

MAIN BOULDER - SOUTH

