

Cooke City Travel Planning Area

A. Alternative Travel Area Goals, Objectives, Standards and Guidelines

Travel Planning Area Direction Under Alternative 1

Alternative 1 is the “no action” alternative. There would be no changes to current management direction applicable to travel management.

Travel Planning Area Direction Under Alternatives 2 through 7-M

GOAL 1: Summer Recreation Use. Provide opportunities for summer recreation use with an emphasis on regulated motorized/mountain bike use to the north of Highway 212. *This goal applies to Alternatives 2 through 7-M, however, there would be no emphasis on motorized use in Alternative 6.*

OBJ. 1-1a: Manage the road and trail system to provide for the following types of summer recreation use. *This objective applies to Alternatives 2 through 6, however, the amount of opportunity varies as shown in the table below. The column for Alternative 7-M is provided for information only.*

Table II – 40 Summary of Summer Opportunities By Miles							
All mileages are approximate							
Recreation Opportunity	Alt. 1	Alt. 2	Alt. 3	Alt. 4	Alt. 5	Alt. 6	Alt. 7-M
Pleasure Driving							
Miles of Road	3	2	3	3	3	3	2
Backcountry Roads (4x4)							
Miles of Road	23	24	24	24	17	8	24
ATV							
Miles of Road	0	0	16	16	11	3	20
Miles of Trail	0	0	4	4	1	0	1
Total Miles	0	0	20	20	12	3	21
Motorcycle							
Miles of Road	0	0	0	0	0	0	0
Miles of Trail	0	0	0	0	0	0	0
Total Miles	0	0	0	0	0	0	0
Mountain Bike (Use Emphasized)							
Miles of Road	26	26	28	28	28	28	27
Miles of Trail	20	9	12	12	6	12	8
Total Miles	46	35	40	40	34	40	35
Mountain Bike (Use Allowed)							
Miles of Trail	1	1	0**	0**	0**	0**	2
Pack and Saddle Stock (Use Emphasized)							
Miles of Trail	21	21	17	17	21	21	11
Pack and Saddle Stock (Use Allowed)							
Miles of Trail	0*	0*	4	4	0*	0*	10

Table II – 40 Summary of Summer Opportunities By Miles							
All mileages are approximate							
Recreation Opportunity	Alt. 1	Alt. 2	Alt. 3	Alt. 4	Alt. 5	Alt. 6	Alt. 7-M
Hiking (Use Emphasized)							
Miles of Trail	21	21	21	21	21	21	21
Hiking (Use Allowed)							
Miles of Trail	0*	0*	0*	0*	0*	0*	0*

* Use for this activity is not prohibited on any trails; use is either emphasized or allowed.
 ** Use for this activity is prohibited on some trails.

OBJ. 1-1b: Achieve the summer recreation opportunities identified in GOAL 1 through the route-by-route management decisions made through this Travel Plan. Any future proposals to change the uses specified should be done in consideration of the targeted recreation setting to be provided [see the “Recreation Opportunity Spectrum” (ROS) map for summer uses under Alternative 7-M] which is hereby incorporated by reference. *This objective applies to Alternative 7-M only.*

GOAL 2: Winter Recreation Use. Provide opportunities for winter recreation use emphasizing snowmobile use north of Highway 212 and cross-country skiing south of Highway 212. *This goal applies to Alternatives 2 through 7-M.*

OBJ. 2-1a: Manage the road and trail system to provide for the following types of winter recreation use. *This objective applies to Alternatives 2 through 6, however, the amount of opportunity varies as shown in the table below. The column for Alternative 7-M is provided for information only.*

Table II – 41 Summary of Winter Opportunities In Miles							
All mileages are approximate							
Recreation Opportunity	Alt. 1	Alt. 2	Alt. 3	Alt. 4	Alt. 5	Alt. 6	Alt. 7-M
Pleasure Driving (Plowed Road)							
Miles of Plowed Road	4	4	4	4	4	4	4
Snowmobiling							
Miles of Groomed Trail	31	31	31	31	31	31	31
Miles of Marked Trail	0	0	0	2	2	0	2
Total Miles	31	31	31	33	33	31	33
Cross-country Skiing							
Miles of Groomed Trail	0	0	14	13	4	4	4
Miles of Marked Trail	16	16	1	0	9	9	9
Total Miles	16	16	15	13	13	13	13

Table II - 42 Summary of Area Restrictions - Acres							
Recreation Opportunity	Alt. 1	Alt. 2	Alt. 3	Alt. 4	Alt. 5	Alt. 6	Alt. 7-M
Snowmobiling							
Yearlong Closure							
Wilderness	0	0	0	0	0	0	0
Non-Wilderness	0	0	0	3765	3765	3765	1028
Seasonal Closure <u>2/</u>							
Wilderness	0	0	0	0	0	0	0

Table II - 42 Summary of Area Restrictions - Acres							
Recreation Opportunity	Alt. 1	Alt. 2	Alt. 3	Alt. 4	Alt. 5	Alt. 6	Alt. 7-M
Non-Wilderness	0	0	0	0	0	0	0
No Restrictions							
Wilderness	0	0	0	0	0	0	0
Non-Wilderness	16631	16631	16631	12866	12866	12866	15603
Net	16631	16631	16631	16631	16631	16631	16631

2/ Note: Seasonal restrictions are displayed under the route-by-route management section.

OBJ. 2-1b: Achieve the winter recreation opportunities identified in GOAL 2 through the marked and groomed route management decisions made through this Travel Plan along with decisions made on the area available to snowmobiles. Any future proposals to change the uses specified should be done in consideration of the targeted recreation setting to be provided [see the “Recreation Opportunity Spectrum” (ROS) map for winter uses under Alternative 7-M] which is hereby incorporated by reference. *This objective applies to Alternative 7-M only.*

GOAL 3: Water Quality/Fisheries. Provide habitat for Yellowstone cutthroat trout in Soda Butte Creek and Goose Creek, and provide for beneficial uses in all other stream courses. *This goal applies to Alternatives 2 through 7-M.*

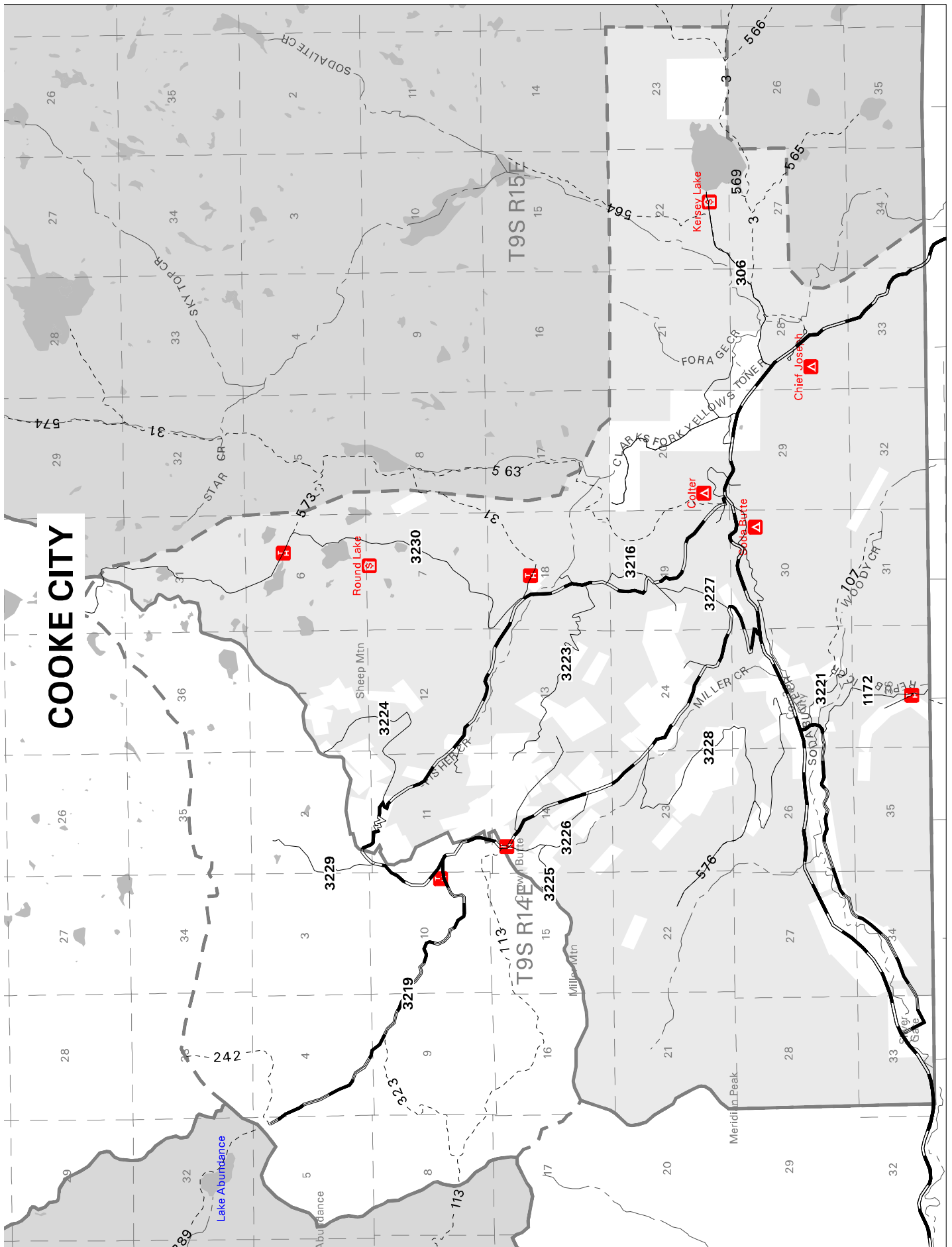
OBJ. 3-1: Effectively close and stabilize all non-designated motorized routes to eliminate erosion and sedimentation. *This objective applies to Alternatives 2 through 7-M.*

OBJ. 3-2: Implement a maintenance program on the Goose Lake Road, Sheep Basin Road and Kersey Lake Road to eliminate erosion and sedimentation. *This objective applies to Alternatives 2 through 4, and to Alternatives 5, 6 and 7-M to the extent these roads remain open to motorized use.*

B. Alternative Route-By-Route Management

[See attached table.](#)

This page left blank intentionally.



COOKE CITY