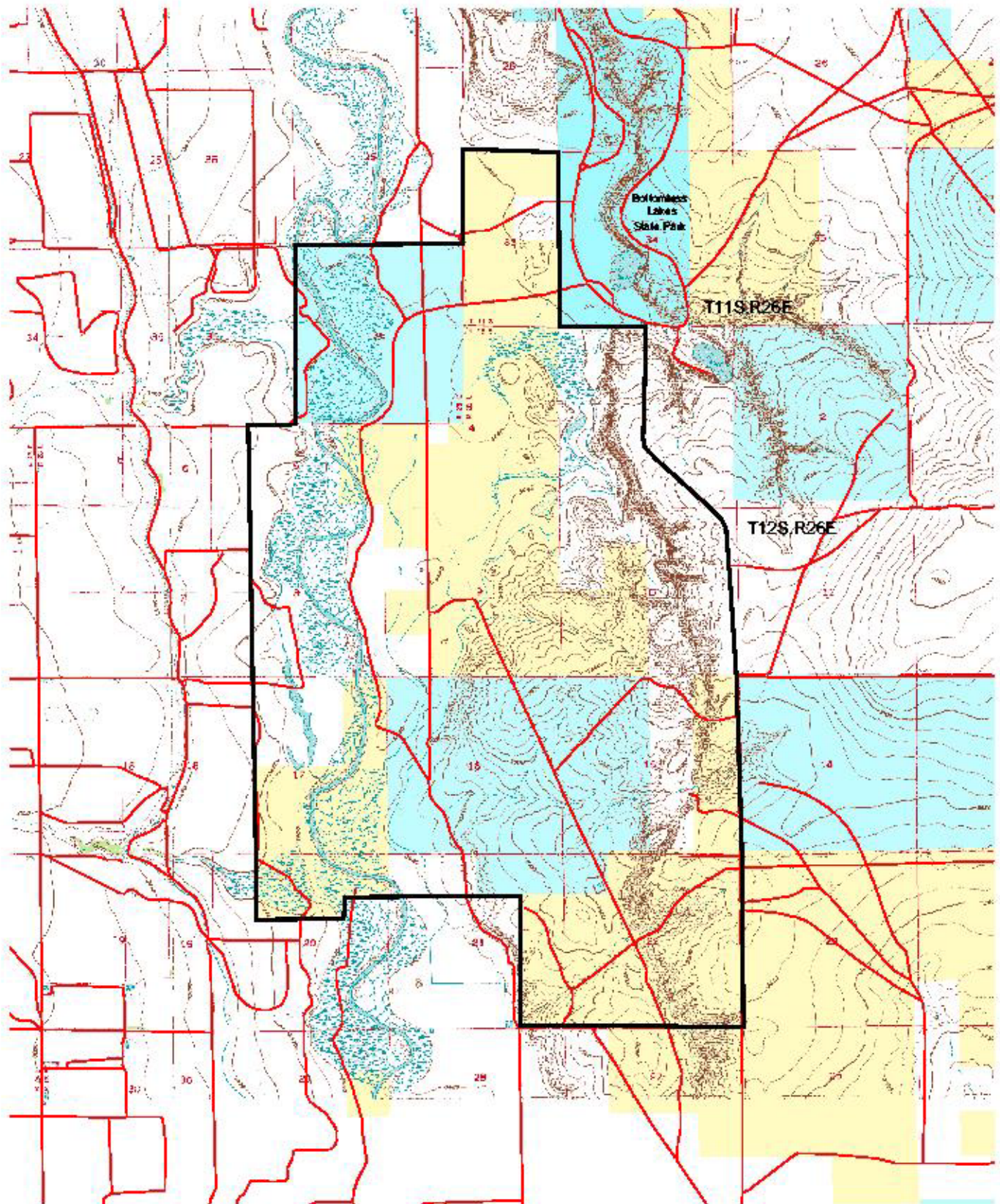


MAPS

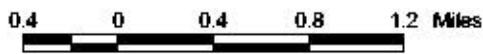


Overflow Wetlands ACEC



T11S,R26E

T12S,R26E



Produced by the RFO GIS Specialist on August 4, 2003.

- Public
- Private
- State
- State Park

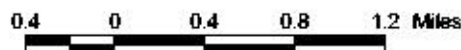
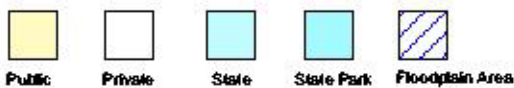
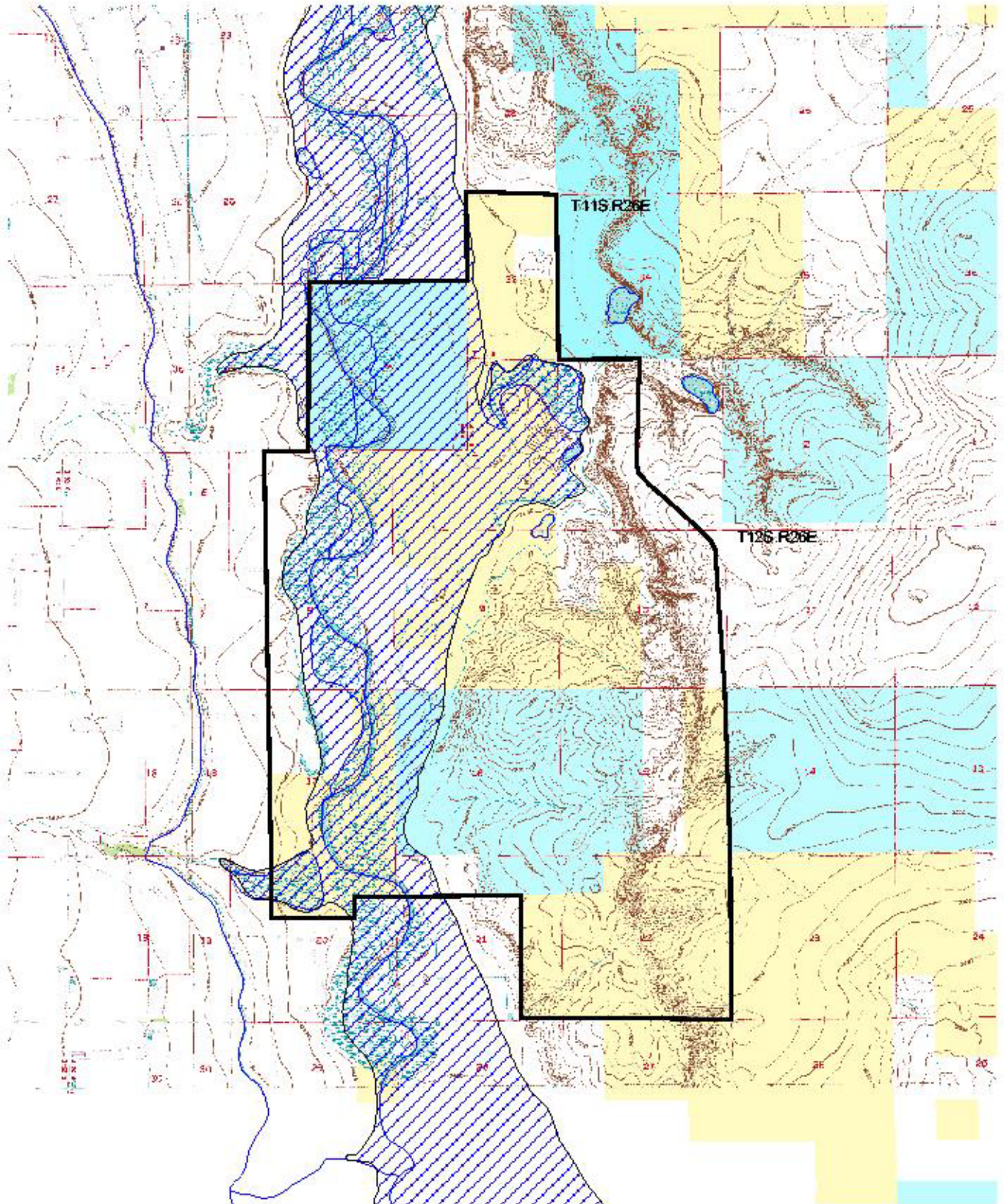
ACEC Boundary

USGS Roads

No warranty is made by the Bureau of Land Management as to the accuracy, reliability, or completeness of these data for individual use or aggregate use with other data, or for purposes not intended by BLM. Spatial information may not meet National Map Accuracy Standards. This information may be updated without notification.



Pecos River 100-Year Floodplain



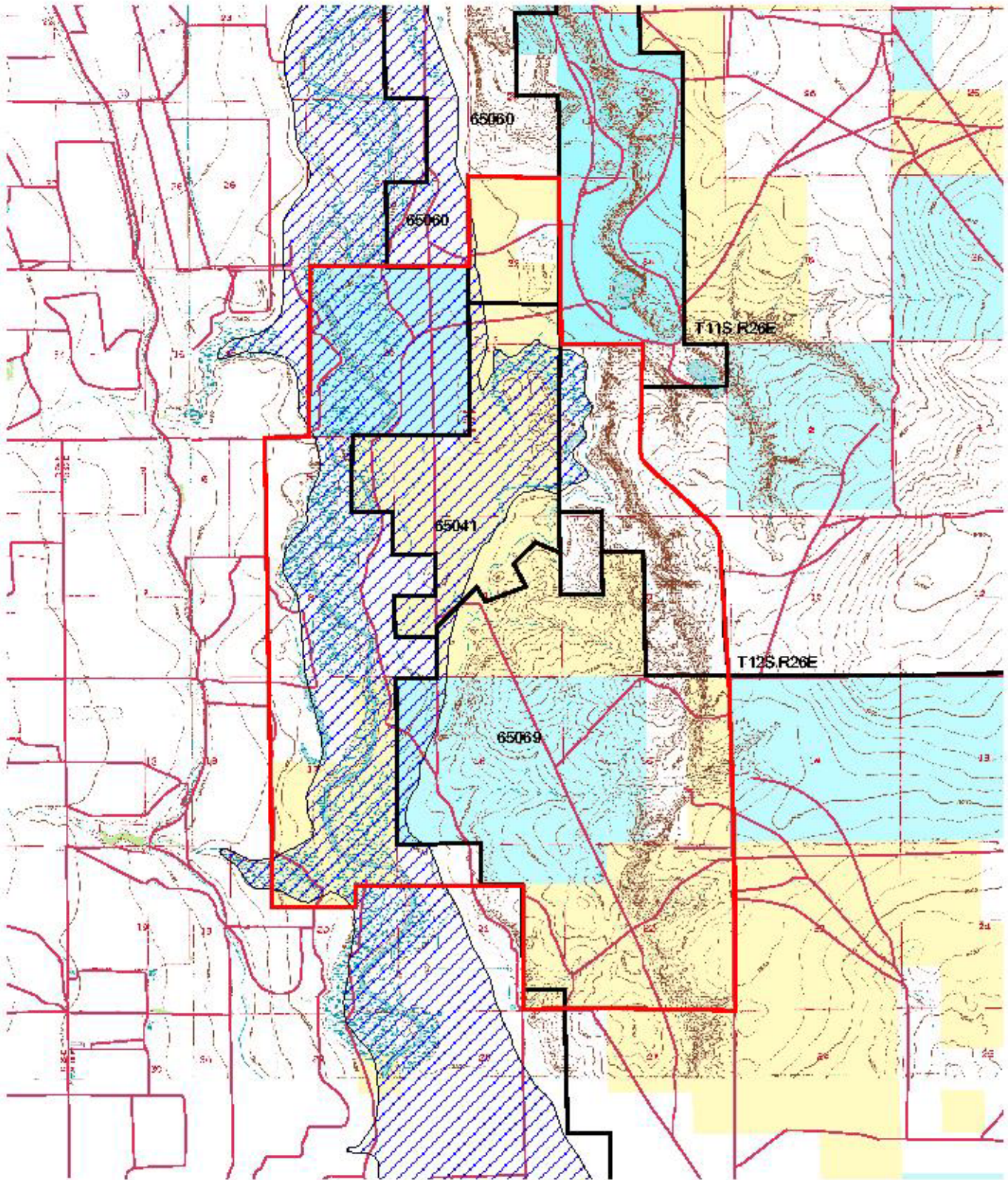
ACEC Boundary

Produced by the RFD GIS Specialist
on August 4, 2003.

No warranty is made by the Bureau of Land Management as to the accuracy, reliability, or completeness of these data for individual use or aggregate use with other data, or for purposes not intended by BLM. Spatial information may not meet National Map Accuracy Standards. This information may be updated without notification.

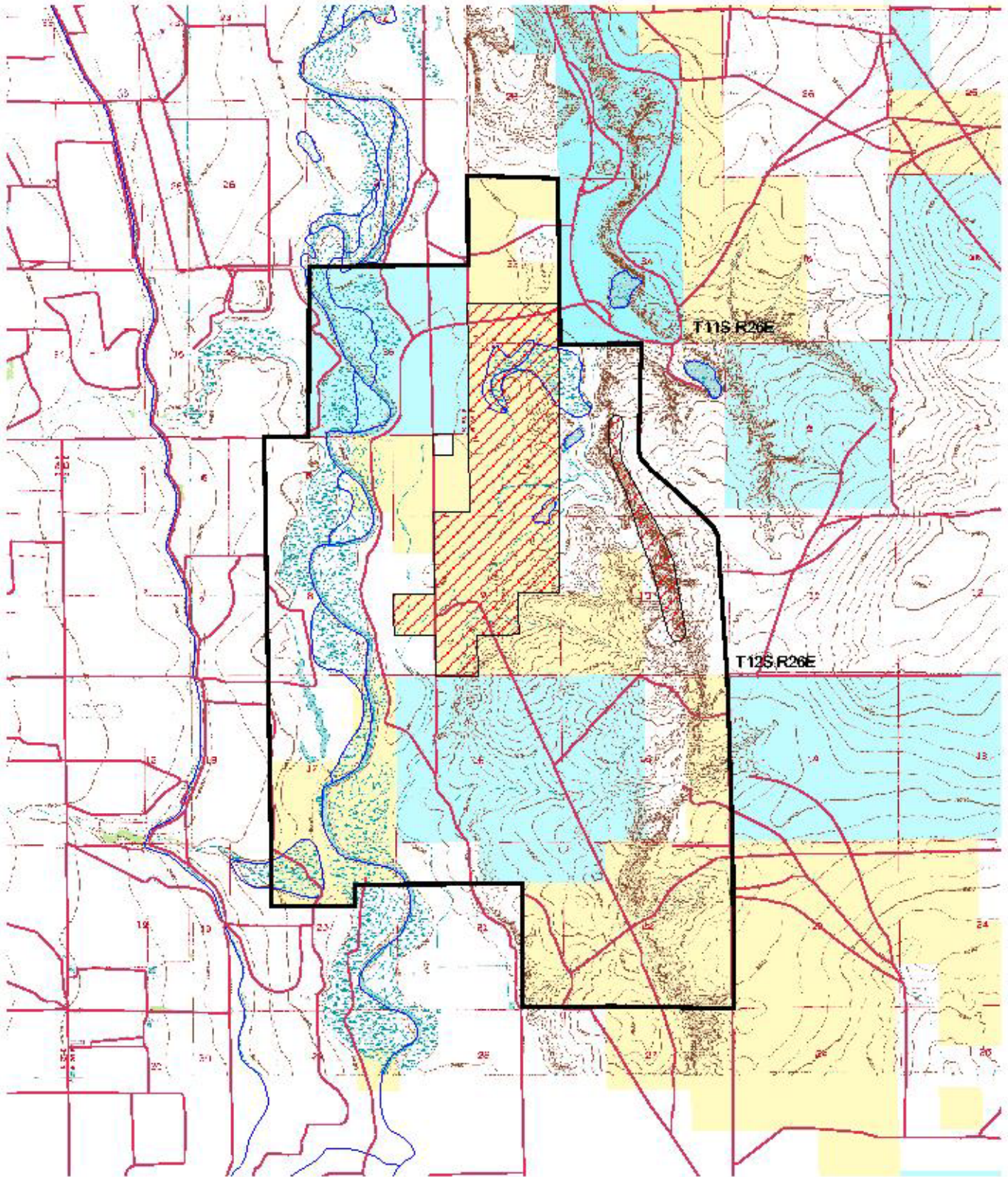


Overflow Wetlands ACEC Grazing Allotments





Overflow Wetlands ACEC Minerals Designations



0.4 0 0.4 0.8 1.2 Miles



Public



Private



State



State Park



No Surface Occupancy
Closed to Solid Leasable Minerals
Salable Minerals
Localizable Minerals



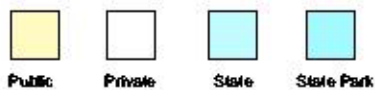
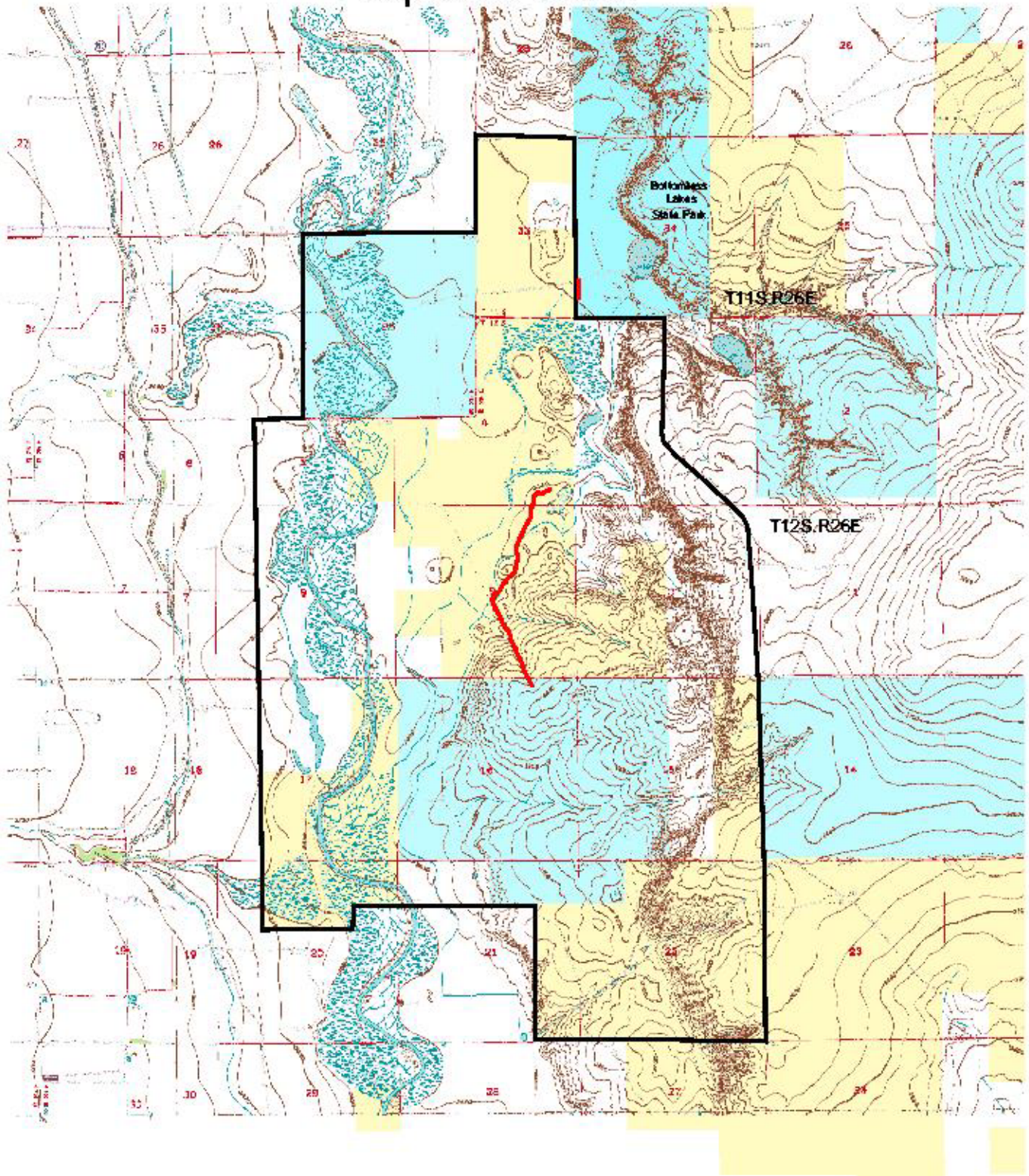
ACEC Boundary

Produced by the RFD GIS Specialist
on Sept. 26, 2003.

No warranty is made by the Bureau of Land Management as to the accuracy, reliability, or completeness of these data for individual use or aggregate use with or without class or for purposes not intended by BLM. Spatial information may not meet North American Standards. This information may be updated without notification.



Overflow Wetlands ACEC Proposed Trails

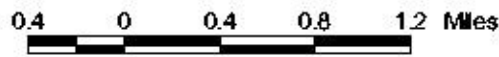
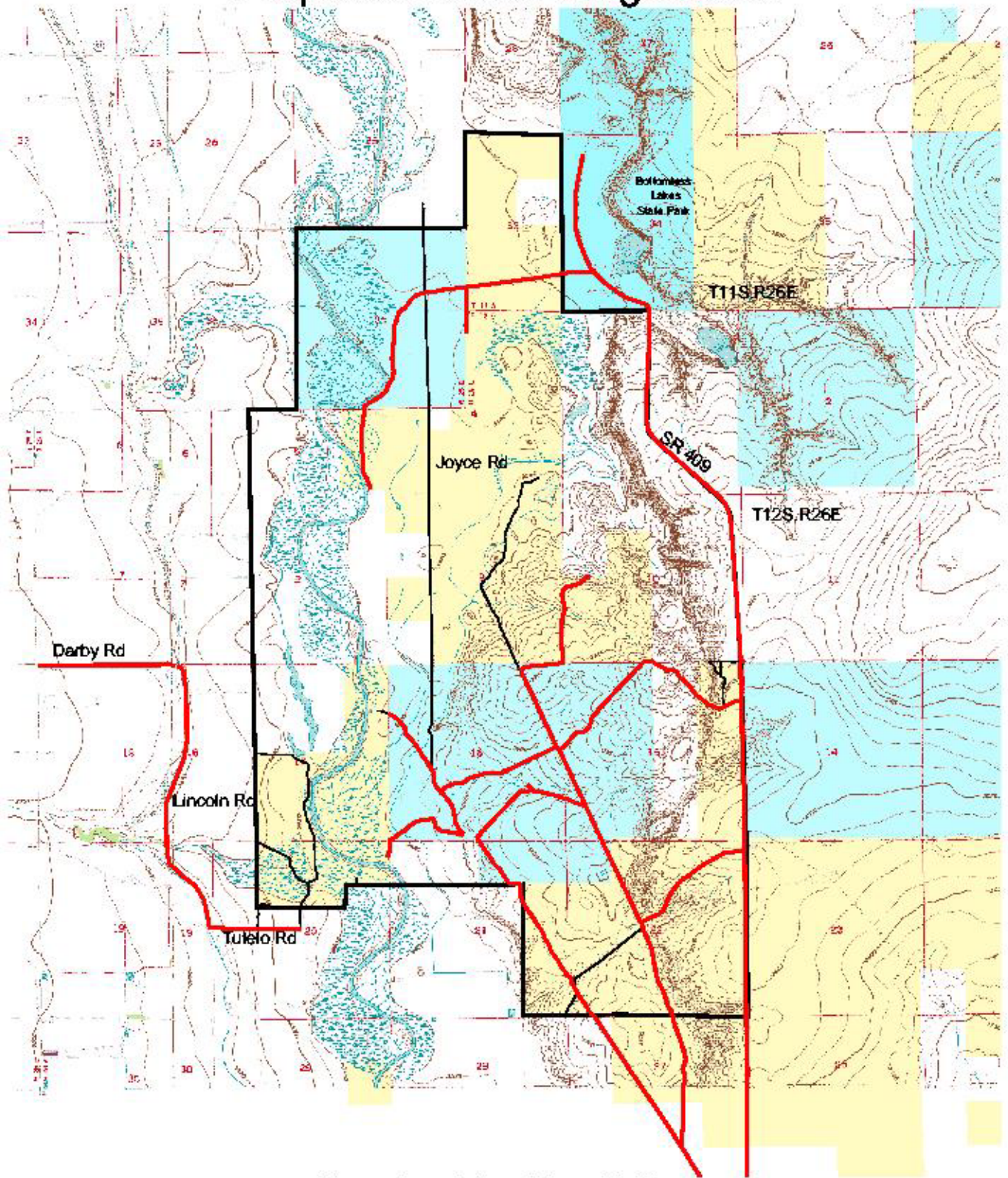


Produced by the RFD GIS Specialist
on Sept. 26, 2003.

No warranty is made by the Bureau of Land Management as to the accuracy, reliability, or completeness of these data. For individual use or aggregate use, with or without purpose, accuracy is not guaranteed by BLM. Spatial information may not meet North American Accuracy Standards. This information may be updated without notification.



Overflow Wetlands ACEC Proposed Road Designations

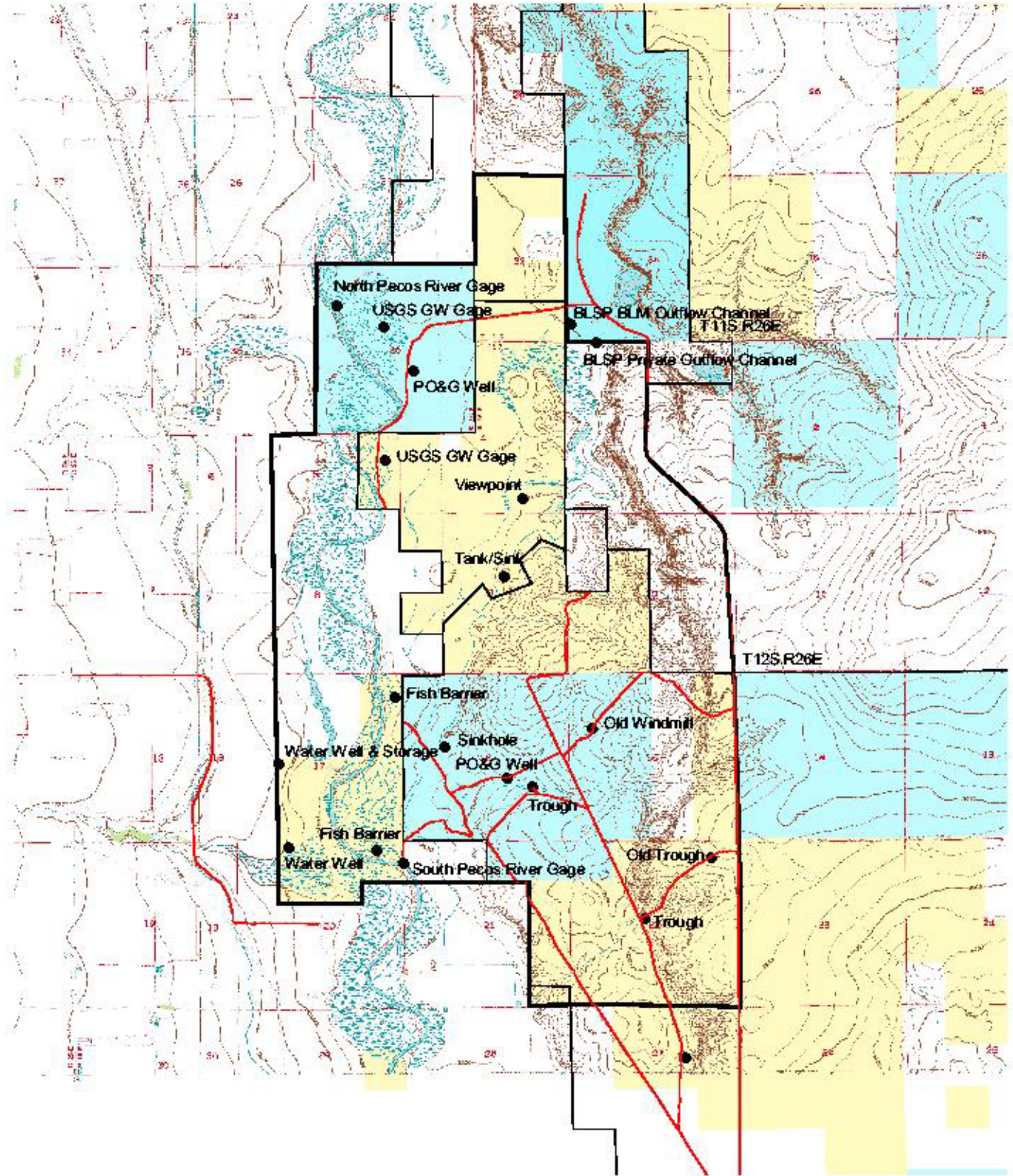


Produced by the RFO GIS Specialist
on Sept. 26, 2003.

No warranty is made by the Bureau of Land Management as to the accuracy, reliability, or completeness of these data for individual use or aggregate use with other data, or for purposes not intended by BLM. Spatial information may not meet National Map Accuracy Standards. This information may be updated without notification.



Overflow Wetlands ACEC Various Site Developments



0.4 0 0.4 0.8 1.2 Miles



- Public
- Private
- State
- State Park

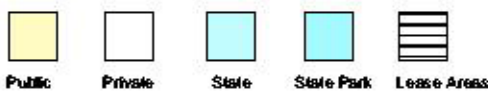
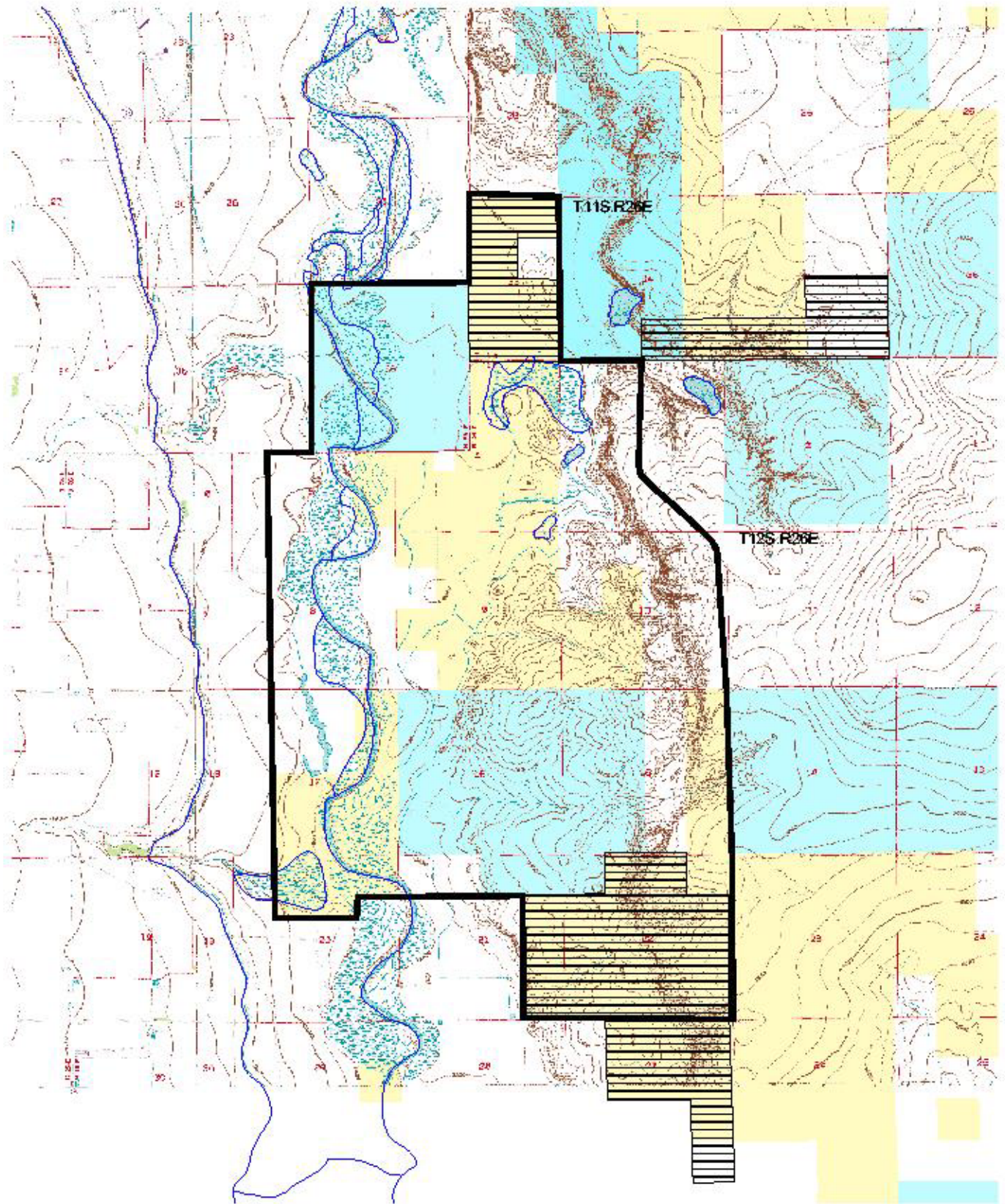
- Proposed Open Roads
- ACEC Boundary
- Allotment Boundaries

Produced by the RFD GIS Specialist
on August 6, 2003.

No warranty or made by the Bureau of Land Management as to the accuracy, reliability, or completeness of these data for individual use or aggregate use with other data, or for purposes not intended by BLM. Spatial information may not meet National Map Accuracy Standards. This information may be updated without notification.



Existing Oil and Gas Leases



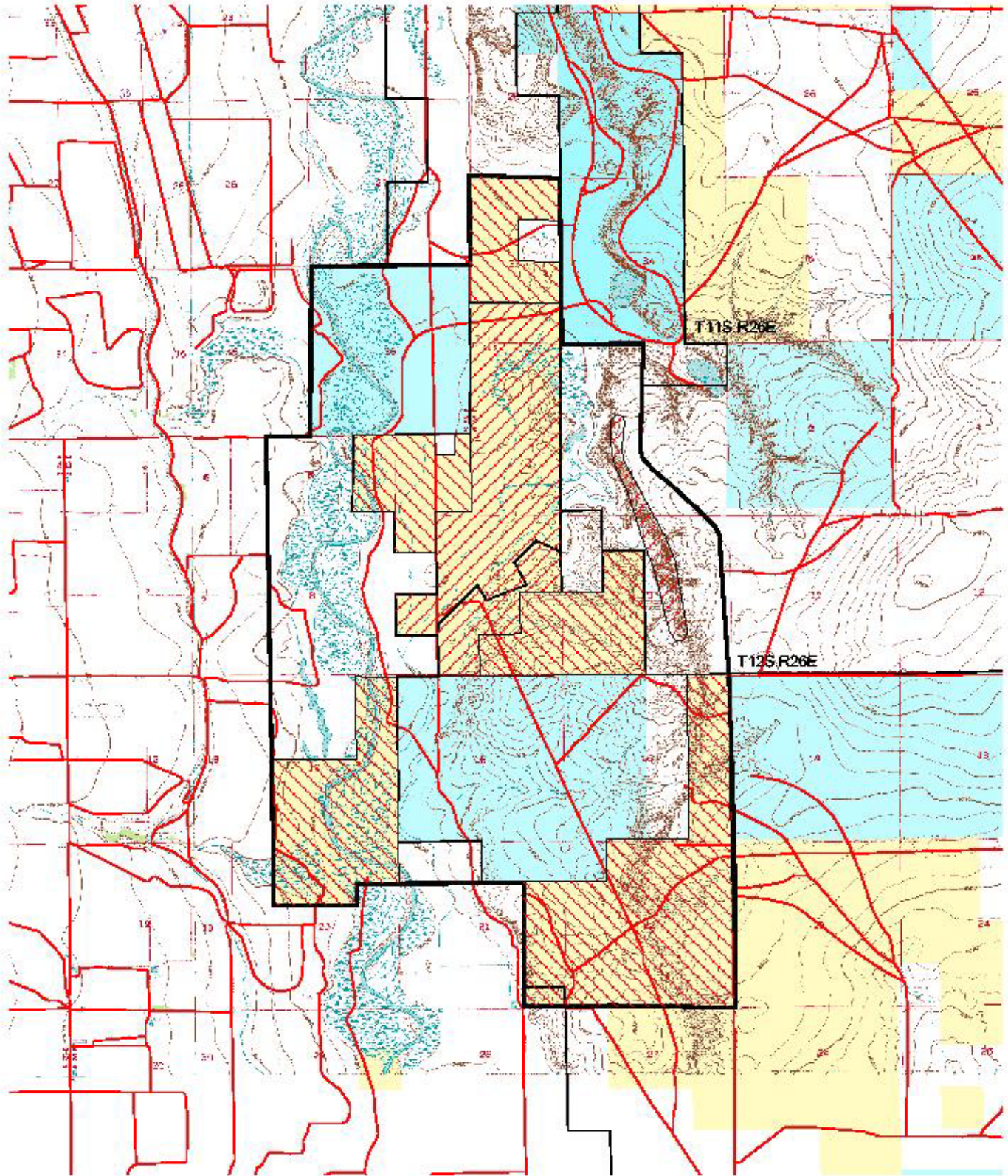
ACEC Boundary

Produced by the RFD GIS Specialist
on August 4, 2003.

No warranty is made by the Bureau of Land Management as to the accuracy, reliability, or completeness of these data for individual use or aggregate use with a 100-foot buffer or greater unless indicated by BLM. Special information may not meet National Map Accuracy Standards. This information may be updated without notification.



Overflow Wetlands ACEC OHV Designations



0.4 0 0.4 0.8 1.2 Miles



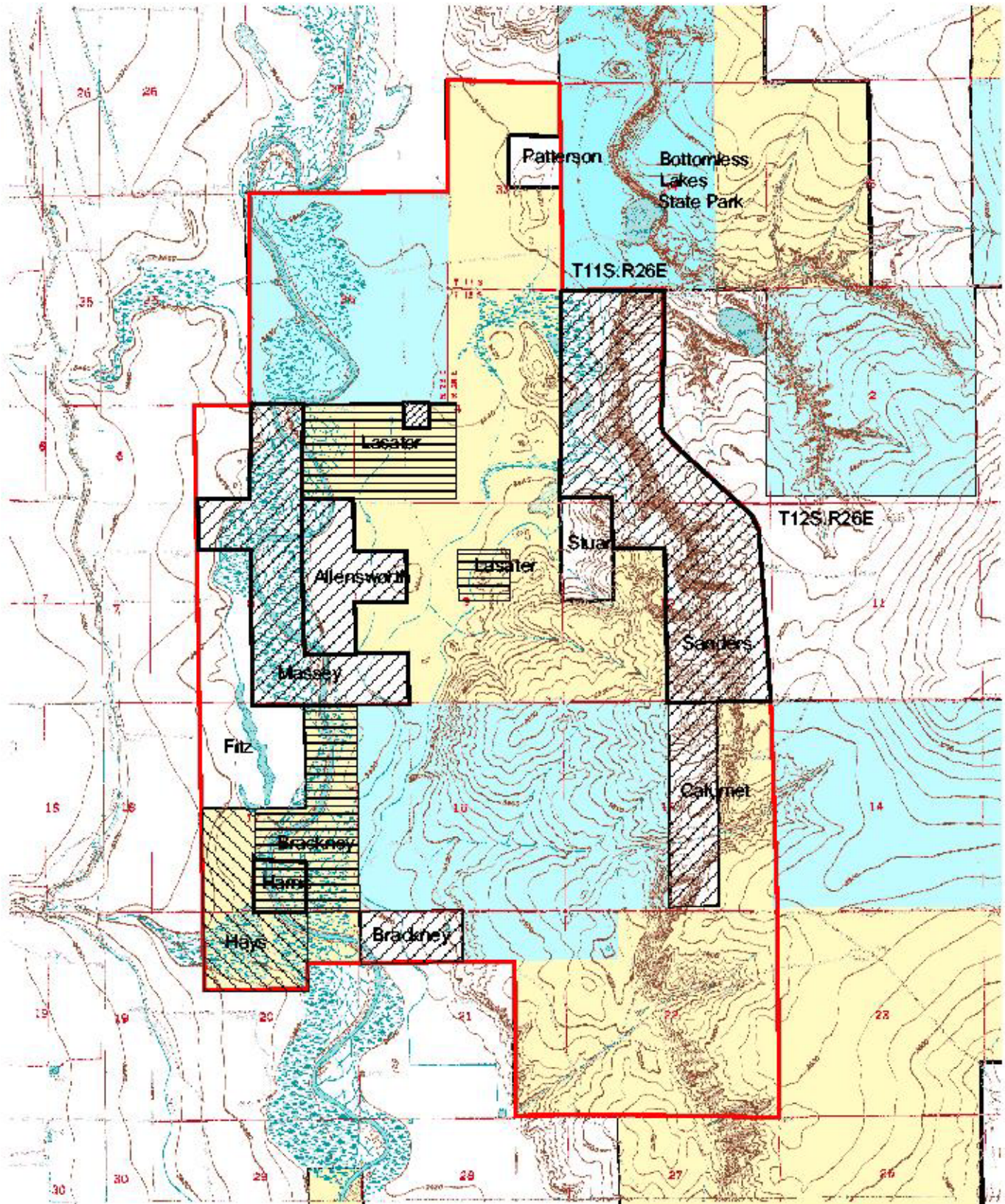
Produced by the RFD GIS Specialist
on Sept. 26, 2003.

No warranty is made by the Bureau of Land Management as to the accuracy, reliability, or completeness of these data for individual use or aggregate use with or without other BLM products or services by BLM. Spatial information may not meet North American Standards. This information may be updated without notification.



Overflow Wetlands ACEC

Proposed & Completed Acquisitions



An warranty is made by the Bureau of Land Management as to the accuracy, reliability, or completeness of these data for the purposes for which they were collected. This information may be updated without notification.

Produced by the Roswell Field Office
GIS Specialist on Sept. 26, 2003.

0.2 0 0.2 0.4 Miles

ACEC Boundary

