

Decision Diagram Key

Using Decision Diagrams With the Field Guide

START HERE

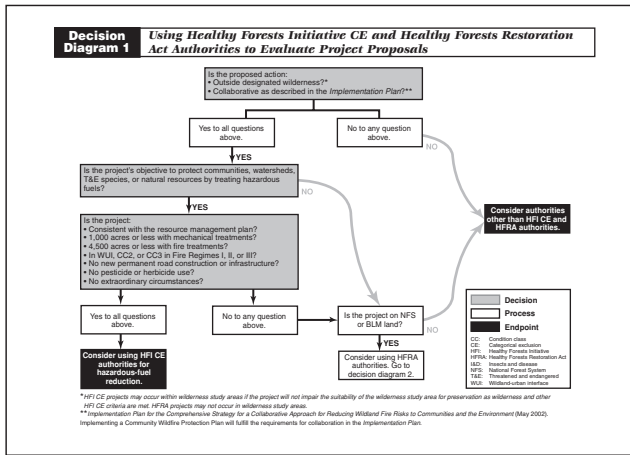


Diagram 1 helps you determine whether your project qualifies for HFI CE or HFRA authorities.

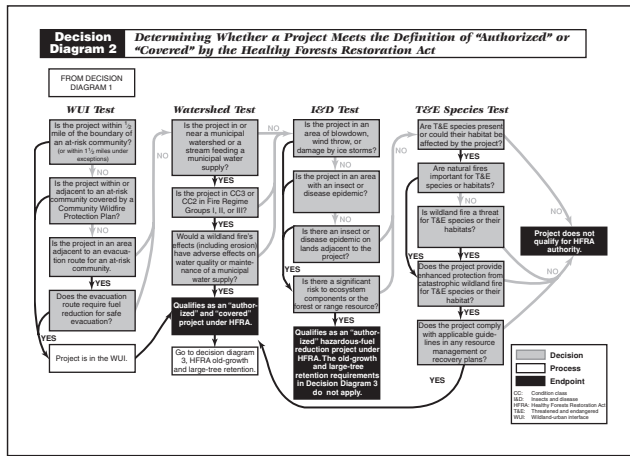


Diagram 2 helps you determine whether your project qualifies as an "authorized" or "covered" project under HFRA authorities.

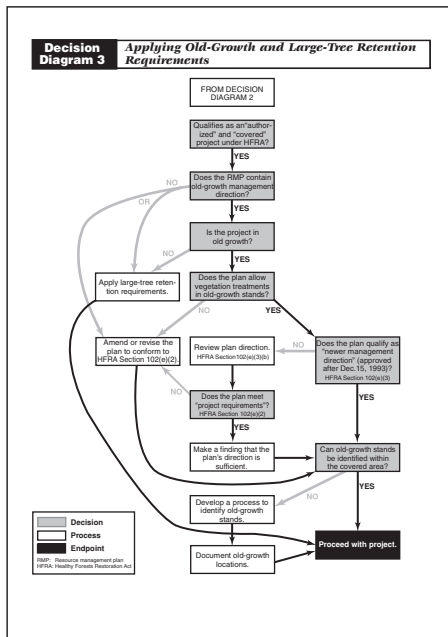
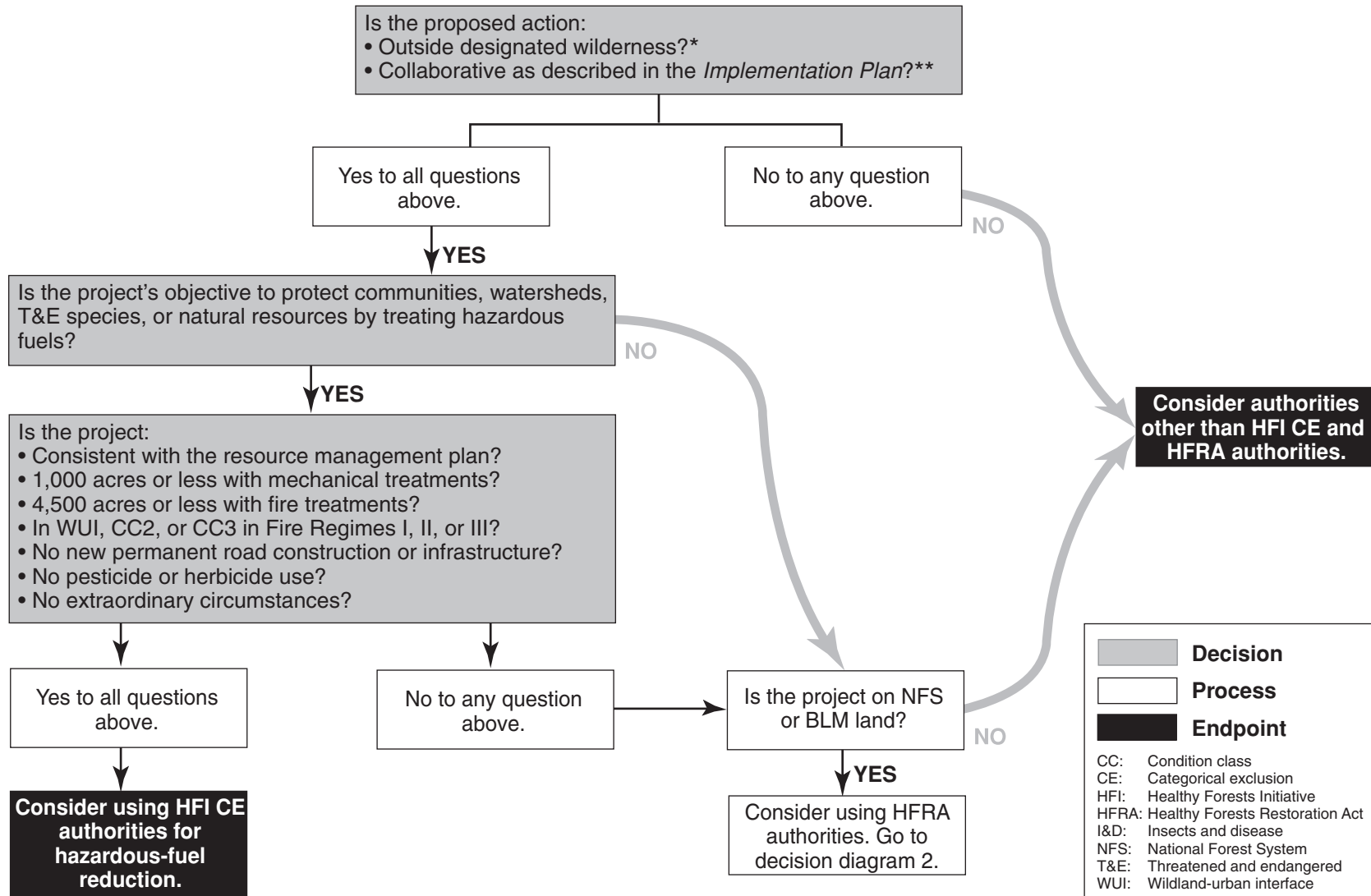


Diagram 3 helps you determine whether the old-growth or large-tree retention guidelines apply to "covered" projects.

CE: Categorical exclusion
HFI: Healthy Forests Initiative
HFRA: Healthy Forests Restoration Act

Decision Diagram 1

Using Healthy Forests Initiative CE and Healthy Forests Restoration Act Authorities to Evaluate Project Proposals



*HFI CE projects may occur within wilderness study areas if the project will not impair the suitability of the wilderness study area for preservation as wilderness and other HFI CE criteria are met. HFRA projects may not occur in wilderness study areas.

**Implementation Plan for the Comprehensive Strategy for a Collaborative Approach for Reducing Wildland Fire Risks to Communities and the Environment (May 2002).

Implementing a Community Wildfire Protection Plan will fulfill the requirements for collaboration in the Implementation Plan.

Decision Diagram 2

Determining Whether a Project Meets the Definition of “Authorized” or “Covered” by the Healthy Forests Restoration Act

FROM DECISION DIAGRAM 1

WUI Test

Is the project within 1/2 mile of the boundary of an at-risk community? (or within 1 1/2 miles under exceptions)

NO

Is the project within or adjacent to an at-risk community covered by a Community Wildfire Protection Plan?

NO

Is the project in an area adjacent to an evacuation route for an at-risk community.

YES

Does the evacuation route require fuel reduction for safe evacuation?

YES

Project is in the WUI.

Watershed Test

Is the project in or near a municipal watershed or a stream feeding a municipal water supply?

YES

Is the project in CC3 or CC2 in Fire Regime Groups I, II, or III?

YES

Would a wildland fire's effects (including erosion) have adverse effects on water quality or maintenance of a municipal water supply?

YES

Qualifies as an “authorized” and “covered” project under HFRA.

Go to decision diagram 3, HFRA old-growth and large-tree retention.

I&D Test

Is the project in an area of blowdown, wind throw, or damage by ice storms?

NO

Is the project in an area with an insect or disease epidemic?

NO

Is there an insect or disease epidemic on lands adjacent to the project?

YES

Is there a significant risk to ecosystem components or the forest or range resource?

YES

Qualifies as an “authorized” hazardous-fuel reduction project under HFRA. The old-growth and large-tree retention requirements in Decision Diagram 3 do not apply.

T&E Species Test

Are T&E species present or could their habitat be affected by the project?

YES

Are natural fires important for T&E species or habitats?

NO

Is wildland fire a threat for T&E species or their habitats?

YES

Does the project provide enhanced protection from catastrophic wildland fire for T&E species or their habitat?

YES

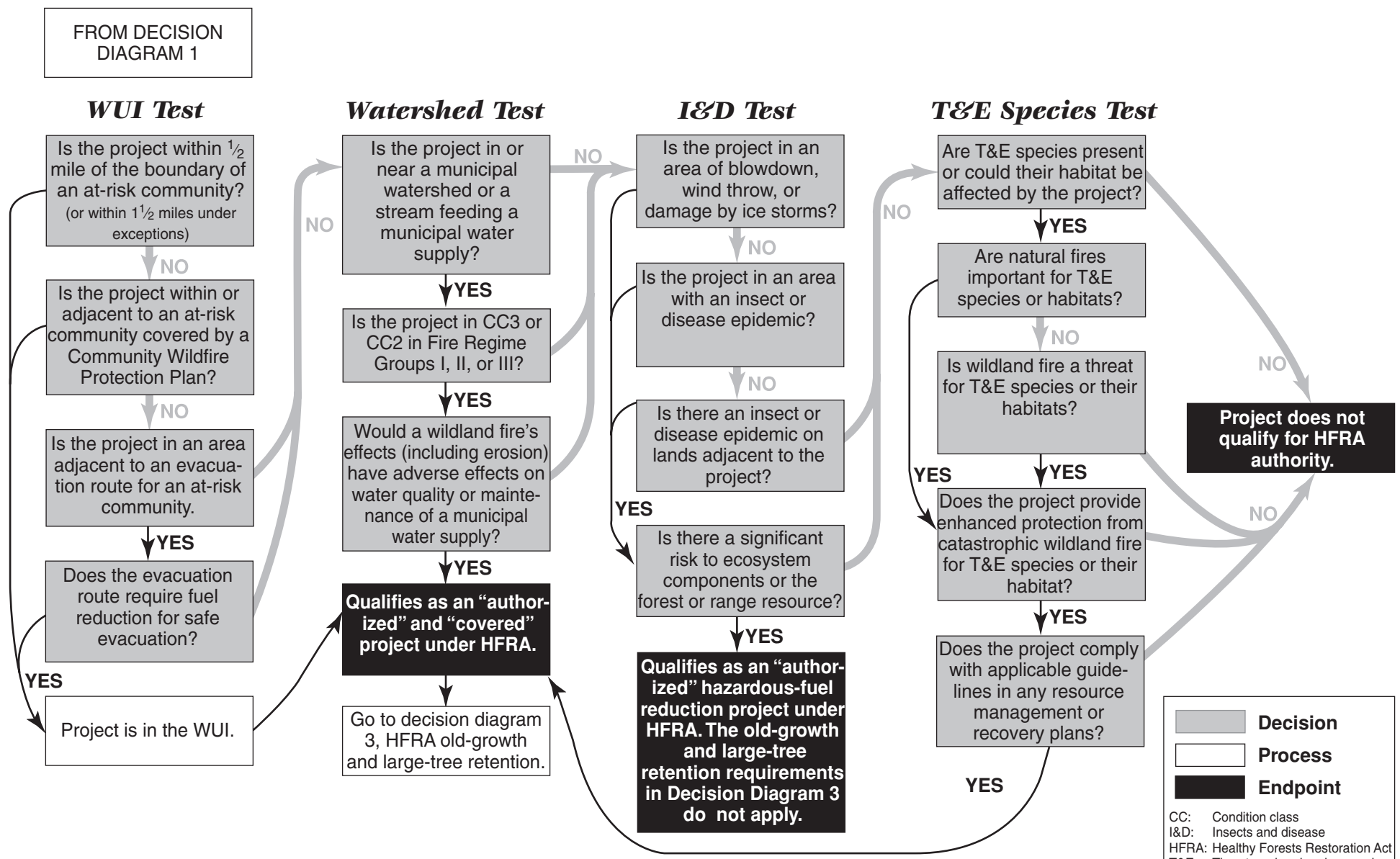
Does the project comply with applicable guidelines in any resource management or recovery plans?

YES

Project does not qualify for HFRA authority.

	Decision
	Process
	Endpoint

CC: Condition class
 I&D: Insects and disease
 HFRA: Healthy Forests Restoration Act
 T&E: Threatened and endangered
 WUI: Wildland-urban interface



Decision Diagram 3

Applying Old-Growth and Large-Tree Retention Requirements

