

United States
Department of
Agriculture

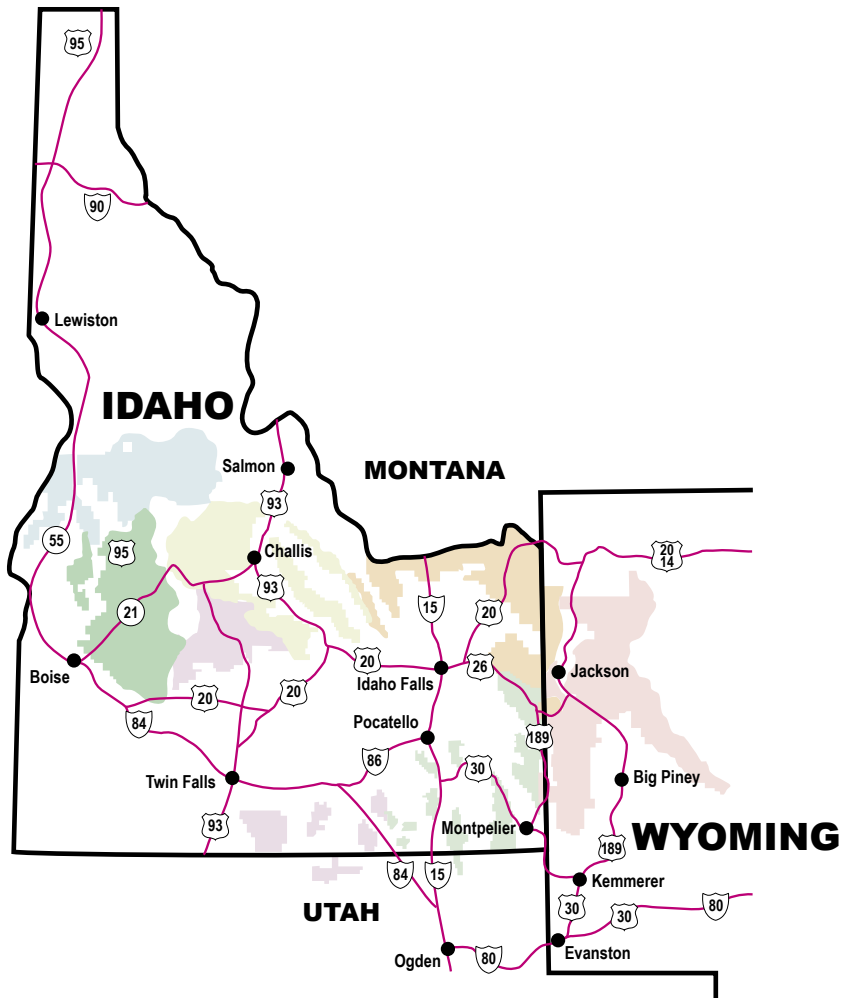
Forest
Service

Intermountain
Region

Ogden, Utah



Camping and Picnicking on the National Forests of Southern Idaho & Western Wyoming



THE NATIONAL FORESTS

**America's
Great
Outdoors**

Welcome to the
Boise
 National Forest

The Forest

The Boise National Forest includes about 2,612,000 acres of National Forest System Lands located north and east of the city of Boise, Idaho. Intermingled with the Forest are 348,000 acres owned or administered by private citizens or corporations, the State of Idaho, and other Federal agencies.

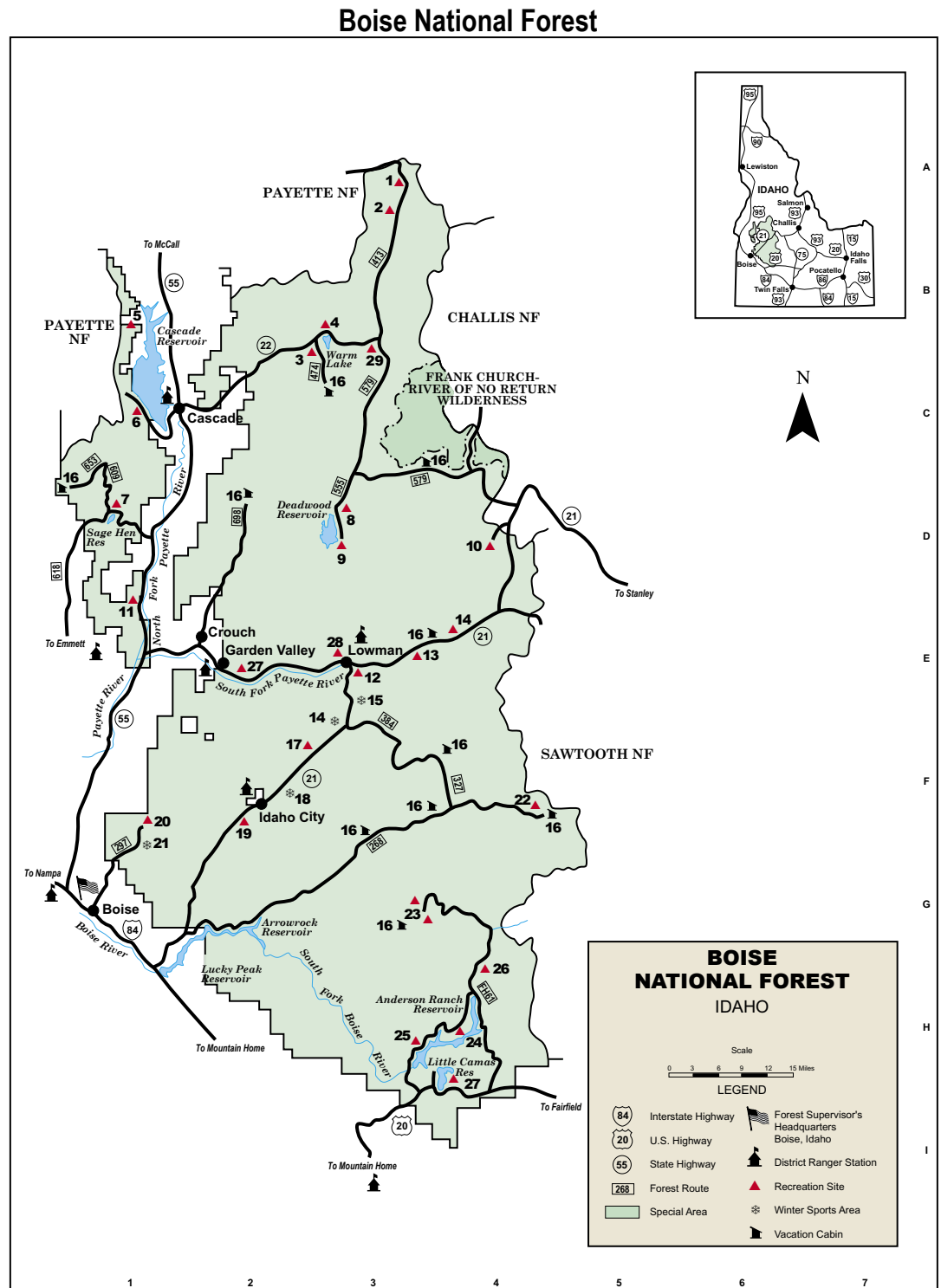
Most of the land supports an evergreen forest that includes pure or mixed stands of ponderosa pine, Douglas-fir, Engelmann spruce, lodgepole pine, and subalpine fir. Brush-grass or grasses are found in the non-timbered areas. The Forest contains large areas of summer range for big game species, such as mule deer and Rocky Mountain elk. Trout are native to most streams and lakes, while ocean-going salmon and steel-head inhabit the many tributaries of the Salmon River.

Most of the land lies within the Idaho Batholith – a large and erosive geologic formation. Through uplift, faulting, and subsequent dissection by stream cutting action, a mountainous landscape has developed. Elevations range from 2,600 to 9,800 feet. The major river systems represented are the Boise and Payette Rivers, and the South and Middle Fork drainages of the Salmon River. The average annual precipitation ranges from 15 inches at lower elevations to 70 inches at higher elevations.

Recreation Opportunities

There are many year-round recreation opportunities. Visitors will find over 70 campgrounds and picnic areas providing a variety of recreation experiences. Several of the campgrounds provide access for the physically challenged.

For those who want solitude, the Frank Church-River of No Return Wilderness has lots of it, as do other undeveloped areas throughout the Forest. In addition, portions of the Sawtooth Wilderness, the Sawtooth National Recreation Area, and the Middle Fork of the Salmon River, a part of the National Wild and Scenic Rivers System, are easily



accessed from a number of Boise National Forest campgrounds and trailheads. These rugged areas are famous for their spectacular scenery.

There are many opportunities for general or dispersed recreation. Big game hunting and trout fishing are popular. Over 7,600 miles of streams and more than 250 lakes and reservoirs offer excellent water sports activities including rafting, kayaking, sailing, and water skiing.

Visitors can hike, ride horseback, or motorbike on over 850 miles of trails. Three trails have been established as National Recreation Trails: William H. Pogue (motorized/non-motorized travel), Whoop-Um-Up (cross-country skiing), and Hull's Gulch (non-motorized travel).

Snowmobiling, cross-country skiing, alpine and nordic skiing, and ice fishing are popular in winter. Many of the snow trails are regularly groomed.



BOISE NATIONAL FOREST

Recreation Site Information

Location	Name	Elevation in Feet	Season Of Use	Camping	Picnicking	Group	Drinking Water	Toilet	Holding Tank Disposal	Visitor Information	Number of Units	Special Features	Map Location
1	YELLOW PINE	4800	Jun-Oct	A,H,T,U			A	A			14	1,2,10,12,26,27	A3
1	GOLDEN GATE	4800	Jun-Oct	A,H,T,U			A	A			9	1,2,26,27	A3
2	ICE HOLE	4800	Jun-Oct	A,H,T,U			A	A			10	1,2,26,27	B3
3	SO. FORK SALMON RIVER	5200	May-Oct	F,A,H,T,U				B	*		11	1,2,3,5,8,11,12,26,27	C1
4	PICNIC POINT	5300	May-Oct	F,A,H,T			A	B	*		8	1,2,3,5,8,11,12,26,27	D1
4	SHORELINE	5300	May-Oct	F,J,B,T,U		K	A	B	*		32	1,2,3,5,8,11,12,26,27	D1
4	SHORELINE BOAT RAMP	5300	May-Oct	C,H				B				1,2,3,5,8,11,12,26,27	D1
4	WARM LAKE	5300	May-Oct	F,A,J,T,U			A	B			12	1,2,3,5,8,11,12,26,27	D1
5	RAINBOW POINT	5000	May-Nov	F,A,J,T,U			A	B	*		12	1,3,5,8,10,26,27	D3
5	AMANITA	5000	May-Nov	F,A,J,T,U			A	B	*		10	1,3,5,8,10,26,27	D3
6	FRENCH CREEK	5000	May-Nov	F,A,J,T,U			A	B	*		21	1,2,3,5,8,26,27	D4
7	ANTELOPE	4800	May-Sep	F,J,T,U			A	A	*		20	1,2,3,5,19,27	E1
7	SAGEHEN CREEK	4800	May-Sep	F,J,C,T,U			A	A	*		15	1,2,3,5,19,27	E1
8	RIVERSIDE	5300	Jul-Sep	F,A,H,T,U				A			9	1,2,3,27	E3
9	COZY COVE	5300	Jul-Sep	F,A,H,T,U				A			9	1,2,3,27	F3
10	BULL TROUT LAKE	6900	Jul-Sep	F,B,J,T,U	F	F,B,K,T,U	B	B	*		36	1,2,4,17,26,27	F2
11	CANYON	3800	May-Oct	F,A,H,T,U				A	A		7	1,2,13,26,27	F1
11	SWINGING BRIDGE	3700	May-Oct	F,B,H,T,U				A	A		11	1,2,13,26,27	F1
12	PARK CREEK	4200	May-Sep	F,A,J,T,U		F,A,K,T,U	A	A			26	1,2,27	F1
12	PINE FLATS	4400	May-Sep	F,A,J,T,U	F		A	B	*		27	1,2,7,23,26,27	F1
12	KIRKHAM	4000	May-Sep	F,A,J,T,U	F		A	B	*		16	1,2,7,19,23,26,27	F1
12	MOUNTAIN VIEW	3900	May-Sep	F,A,J,T,U	F		A	B	*		14	1,2,7,10,11,12,26	F1
13	HELENDE	4100	May-Sep	F,A,J,T,U	F		A	B	*		10	1,2,7,26,27	F4
13	LOWMAN NATURE	4100	Yr Rnd		B			B			2	1,4,8	F4
14	WHOOOP-UM-UP *	5400	Dec-Mar	F,A,H,T,U				A				17,27 (cross country, snowmobile)	G3
14	BONNEVILLE CAMPGROUND	4700	May-Sep	F,A,J,T,U	F,A		B	B	*		22	1,2,23,26,27	G3
15	BANNER RIDGE	6000	Dec-Mar					A	*			17,27 (cross country)	H4
16	VACATION CABINS		Varies	F,A,K		K	A	A				1,2,7,8,17,26	
17	BAD BEAR	5200	Jun-Oct	F,A,H,T,U			A	A			8	1,2,13,27	H4
17	TEN MILE	5000	Jun-Oct	F,A,H,T,U			A	A			14	1,2,13,27	H4
18	GRANITE CREEK *	4100	Yr Rnd				A	A	*			17,27 (snowmobile)	E2
19	GRAYBACK GULCH	4000	May-Oct	F,A,J,T,U		H	A	A			12	10,12,27	F2
20	SHAFFER BUTTE	7000	Jul-Sep	B,F,C,T,J	J,B	J,F,C,K	B	B			6	19,24,26,27	F1
21	BOGUS BASIN *	7000	Nov-Apr				C	C				11,12,24,26,17	F1
22	RIVERSIDE	5600	Jun-Sep	A,H,T,U				A			7	1,2,10,12,27	F4
22	POWER PLANT	5800	Jun-Sep	A,H,T,U				A			25	1,2,10,12,21,27	F4
23	BIG ROARING RIVER	8200	Jul-Sep	F,A,H,T			A	A			12	1,2,4,26,27	G3
23	BIG TRINITY	7900	Jul-Sep	F,A,H,T			A	A			17	1,2,4,17,26,27	G3
24	PINE	4300	May-Oct	F,A,H,U				A			8	1,3,5,10,12,28	H4
24	DEER CREEK	4300	May-Oct	A,H,U				A	*		30	1,3,5,10,11,12,28	H4
24	CURLEW CREEK	4300	May-Oct	F,A,H,U			A	A			25	1,3,5,10,12,28	H4
25	FALL CREEK	4300	May-Oct	A,H,F,T,U				A	*		20	1,2,3,5,6,9,10,11,12,28	H3
25	EVANS CREEK	4300	May-Oct	A,H,T,U				A			12	1,3,28	H3
25	ELK CREEK	4300	May-Oct	A				A			10	1,3,5,28	H3
26	DOG CREEK	4400	May-Sep	A,F,J,T,U			A	A			12	1,2,27	G4
26	ELKS FLAT	4400	May-Sep	C,F,J,T,U		K	A	A			35	1,2,7,8,28	G4
27	HOT SPRINGS	3200	Apr-Oct	C,F,J,T,U		K	C	C	*		11	1,2,7,24,26,27	H4
27	LITTLE CAMAS	5000	May-Oct	A,H,U				A			16	1,3,5,28	H4
28	DEADWOOD	3700	May-Sep	A,F	H,F		B	B			6	1,2,7,17,26,27	E3
29	PENN BASIN	6900	Jun-Oct	A,H				A			6	2,21,26,27	C3

KEY TO RECREATION SITE INFORMATION

Fees (Camping, Picnicking and Group):
F = Fee Charged

Modification of Facilities to Assist Users With Physical Impairments:

- A = Facilities not modified.
- B = Limited modification - At least one unit has been modified, but modification may not be sufficient to be usable by many individuals who are confined to a wheelchair.
- C = Significant modification - At least one unit has been modified to allow use by most individuals who are confined to a wheelchair.

Reservations (Camping, Picnicking, Group):

- H = Non-reservation area.
- J = Reservation accepted/recommended.
- K = Reservation required.
- L = One or more units reserved until 6 pm for handicapped use.

Type of Facilities Available (Camping):

- T = Tents
- U = Trailers

Special Features Located Within One Mile of the Site:

- 1 = Fishing
- 2 = River or stream
- 3 = Reservoir or lake (powerboats permitted)
- 4 = Reservoir or lake (no powerboats)
- 5 = Boat ramp
- 6 = Boat rental
- 7 = Floating, rafting, kayaking
- 8 = Swimming
- 9 = Marina
- 10 = Store
- 11 = Resort
- 12 = Restaurant
- 13 = Museum
- 14 = Cave
- 15 = Ghost town
- 16 = Canyon
- 17 = Trailhead
- 18 = Historic trail
- 19 = Nature trail
- 20 = Accessible by trail or boat only
- 21 = Wilderness access
- 22 = Waterfalls
- 23 = Geological area
- 24 = Handicapped facilities
- 25 = Evening program
- 26 = Scenic drive
- 27 = Timbered setting
- 28 = Open setting

FOR MORE INFORMATION

If you would like more information or detailed maps of the Boise National Forest, please contact one of the following:

FOREST SUPERVISOR
Boise National Forest
1249 So. Vinnell Way, Suite 200
Boise ID 83709
(208) 373-4100

Mountain Home Ranger District
2180 American Legion Blvd.
Mountain Home ID 83647
(208) 587-7961

Idaho City Ranger District
Highway 21, Milepost 38.3
PO Box 129
Idaho City ID 83631
(208) 392-6681

Lucky Peak Nursery
15169 East Highway 21
Boise ID 83716
(208) 343-1977

Lowman Ranger District
7359 Highway 21
Lowman ID 83637
(208) 259-3361

Cascade Ranger District
540 North Main Street
PO Box 696
Cascade ID 83611
(208) 382-7400

Emmett Ranger District
1805 Highway 16, Room 5
Emmett ID 83617
(208) 365-7000

Boise National Forest web site:
www.fs.fed.us/r4/boise



Experience the

Bridger-Teton

National Forest

The Forest

The 3,400,000-acre Bridger-Teton National Forest is the second largest National Forest in the United States outside Alaska. It lies in western Wyoming, adjoining Yellowstone and Grand Teton National Parks and within the Greater Yellowstone Ecosystem, the largest remaining area of undeveloped land in the 48 conterminous United States. It is noted for its unusual scenery and natural features, large and diverse wildlife populations, and habitat for threatened and endangered species.

The Forest contains headwaters of four major river basins: the Yellowstone (Missouri/Mississippi Basin); Snake (Columbia); Green (Colorado Basin); and Bear River (Great Basin).

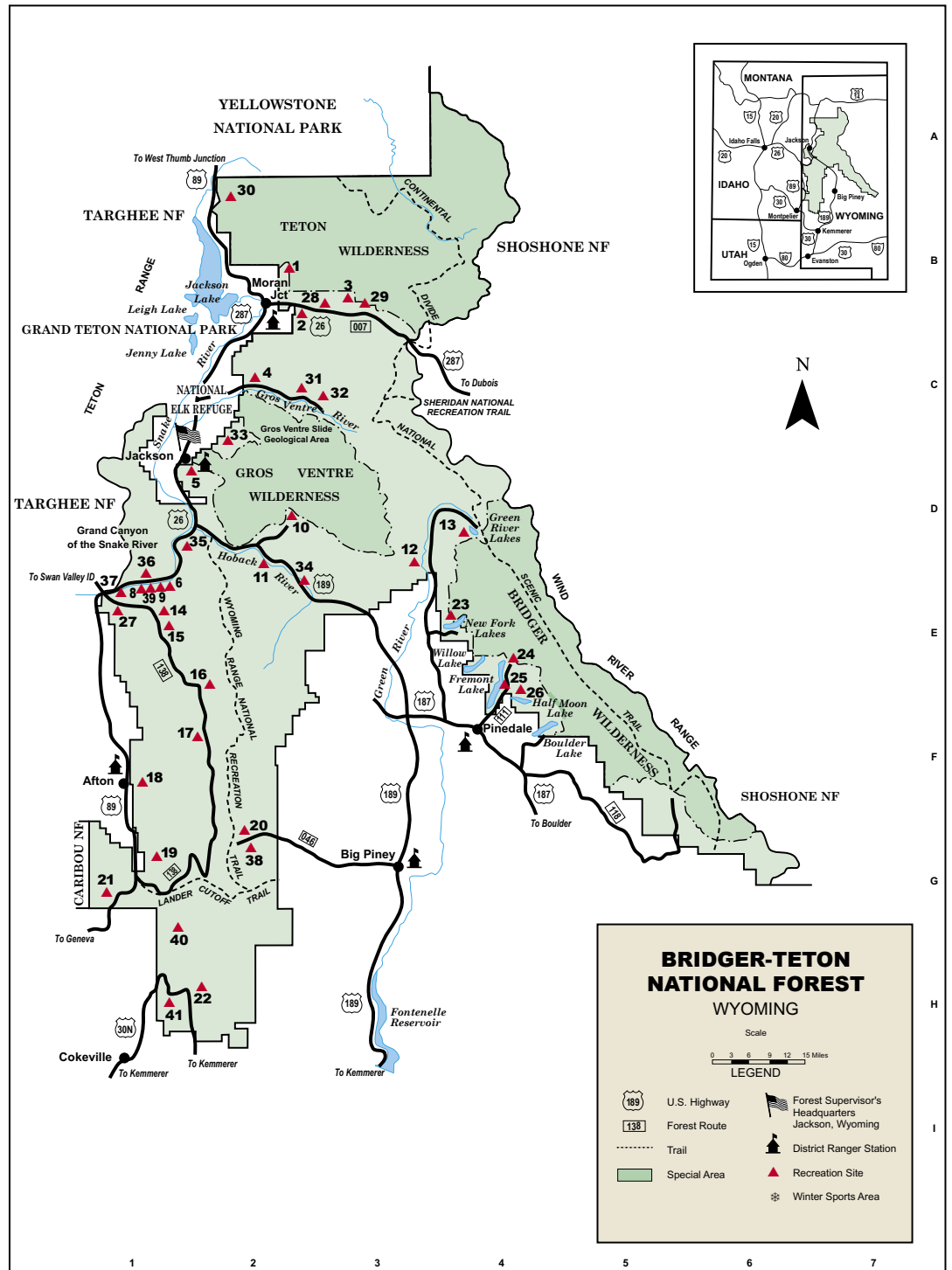
Seven major mountain ranges are found within Forest boundaries. These mountain ranges are part of the northern Rocky Mountains and include part of the striking Teton Range and Wind River Mountains. The Forest borders Jackson Hole, famous in the history of early explorers and fur traders, and winter home of the well-known Jackson elk herd.

Recreation Opportunities

For its two million annual visitors, the Forest offers an excellent variety of all-season recreation from remote wilderness to developed resorts and ski areas. There are over 800 miles of winter sports trails, some of which are groomed for snowmobiling and cross-country skiing, and 2,600 miles of trail that provide summer and fall access to the backcountry. In addition to three wildernesses the Forest offers large areas of undeveloped backcountry.

Fishing and big game hunting opportunities are among the finest found in any National Forest. River recreation is another popular use of the Forest, particularly in the Grand Canyon of the Snake River. Over 300 outfitters provide services such as guided hunting and fishing, river rafting, mountaineering, hiking and horseback riding, cross-country

Bridger-Teton National Forest



skiing, snowmobiling, and helicopter skiing.

Several other natural features are of special interest. The Gros Ventre Slide Geological Area, north of Jackson, is the site of a massive landslide in 1925 which created the Lower Slide Lake. Periodic Spring, east of Afton, is an impressive cold-water geyser. The Wind River Mountains, with large glacial lakes tucked into the moraines left by glaciers, provide an outstanding example of Pleistocene glaciations.



BRIDGER-TETON NATIONAL FOREST

Recreation Site Information

Location	Name	Elevation in Feet	Season Of Use	Camping	Picnicking	Group	Drinking Water	Toilet	Holding Tank Disposal	Visitor Information	Number of Units	Special Features	Map Location
1	PACIFIC CREEK	6600	6/15-Dec	F,A,H,T,U	F,A,H		A	B	HP		8	2,17,21,27,28,29	B2
2	HATCHET	6880	5/25-Dec	F,B,H,T,U	F,B,H		A	B			9	10,12,26,27	B2
3	TURPIN MEADOWS	6900	5/25-Dec	F,B,H,T,U	F,A,H		A	A	HP		18	2,11,17,21,27,29	B3
4	ATHERTON CREEK	7200	5/25-9/30	F,B,H,T,U	F,B,H		A	B	HP		20	1,3,5,23,27,28	C2
5	VISITOR CENTER												D2
6	CABIN CREEK	5800	5/25-9/30	F,A,H,T,U	F,A,H		A		HP		10	1,2,7,26,27	D1
8	STATION CREEK	5900	5/25-9/7	F,B,H,T,U	F,B,H		B	B	HP		16	1,2,7,16,27	E1
9	EAST TABLE	5900	5/25-9/7	F,B,H,T,U	F,B,H		B	B	HP		18	1,2,5,7,16,27	E1
10	GRANITE CREEK	6900	5/25-9/7	F,B,H,T,U	F,B,H		B	B	HP		52	2,8,17,21,22,27	E1
11	HOBACK	6600	5/25-9/30	F,B,H,T,U	F,B,H		B	B	HP		14	1,2,16,24,26,27	D2
12	WHISKEY GROVE	7800	Jun-Oct	F,A,H,T,U	A,H		A	A			9	1,2,26,27	D3
13	GREEN RIVER LAKES	8000	Jun-Oct	F,C,J,T,U	C,H		C	C	HP		27	1,2,3,5,8,17,21,24,26,27	D4
14	LYNX CREEK	6200	Jun-Oct	F,A,H,T,U	A,H			A			14	1,2,26,28 (no water)	E1
15	MURPHY CREEK	6300	Jun-Oct	F,C,H,T,U	C,H		B	C			10	1,2,26,27	E1
16	MOOSE FLAT	6400	Jun-Oct	F,C,H,T,U	C,H		B	C			10	1,2,26,27	E2
17	FOREST PARK	7000	Jun-Oct	F,C,H,T,U	C,H		B	C			12	1,2,26,27	F2
18	SWIFT CREEK	6300	May-Sep	F,A,H,T,U	A,H		A	A			12	1,2,4,23,27	F1
19	COTTONWOOD	7000	Jun-Oct	F,C,H,T,U	C,H	C,K	C	C			20	1,3,8,17,27	G1
20	SACAJAWEA	8200	Jun-Sep	F,A,H,T,U	A,H		A	A			24	1,2,27	G2
21	ALLRED FLAT	7000	Jun-Oct	F,B,H,T,U	B,H	B,K	B	B	*		32	1,2,24,27	G1
22	HAMS FORK	8000	Jun-Oct	F,A,H,T,U	A,H		A	A			13	1,2,17,27	H2
23	NARROWS	7800	Jun-Oct	F,A,J,T,U	A,H		A	A			19	1,3,5,8,17,21,27	E3
24	TRAILS END	9100	Jun-Sep	F,A,H,T,U	A,H		A	A	*		8	17,21,26,27	E4
25	FREMONT LAKE	7600	Jun-Sep	F,C,J,T,U	C,H	C,K	C	C			56	1,3,5,8,24,27	E4
26	HALF MOON LAKE	7600	Jun-Sep	F,A,H,T,U	A,H		A	A			18	1,3,5,8,27 (no water)	E4
27	BRIDGE	5700	Jun-Oct	F,A,H,T,U	A,H			A			5	1,2,26,27 (no water)	E1
28	BOX CREEK	7100	6/10-Dec	F,B,H,T,U	F,B,H			B			6	17,21,26,27,29	B3
29	ANGLES	7200	6/10-Dec	F,A,H,T,U	F,A,H			A			4	17,21,26,27,29	B3
30	SHEFFIELD CREEK	7800	6/25-Nov	F,A,H,T,U	F,A,H			A	A		5	17,21,26,27,29	A2
31	REDHILLS	7500	6/10-9/30	F,A,H,T,U	F,A,H			A	A		5	1,2,19,26,27	C2
32	CRYSTAL CREEK	7600	6/10-9/30	F,A,H,T,U	F,A,H			A	A		6	1,2,26,27	C3
33	CURTIS CANYON	6900	5/25-9/30	F,A,H,T,U	F,A,H			A	A	HP	12	16,19,23,27	D2
34	KOZY	6500	5/25-9/30	F,A,H,T,U	F,A,H			A	A		7	1,2,7,23,27	E2
35	ELBOW	5700	5/25-9/30	F,A,H,T,U	F,A,H				A		9	1,2,7,16,27	D1
36	STATION CREEK GROUP	5900	5/25-9/7	F,A,K,T,U		F,B,K	B	B			2	1,2,7,16,27	E1
37	LITTLE COTTONWOOD GROUP	6000	5/25-9/7	F,A,K,T,U		F,B,K	A	A			1	1,2,7,16,27	E1
38	MIDDLE PINEY LAKE	8500	Jun-Sep	A,H,T,U	A,H			C			5	1,2,4,5,17,27	G2
39	WEST TABLE BOAT LAUNCH											1,2,4,5,7,24,27,28	E1
40	HOBBLE CREEK	8000	Jun-Oct	F,A,H,T,U	A,H		A	A	HP		18	1,2,17,27	G1
41	BIG SPRINGS	7500	Jun-Oct		A,H						1	1,2,27	H1

KEY TO RECREATION SITE INFORMATION

Fees (Camping, Picnicking and Group):
F = Fee Charged

Modification of Facilities to Assist Users With Physical Impairments:

- A = Facilities not modified.
- B = Limited modification - At least one unit has been modified, but modification may not be sufficient to be usable by many individuals who are confined to a wheelchair.
- C = Significant modification - At least one unit has been modified to allow use by most individuals who are confined to a wheelchair.

Reservations (Camping, Picnicking, Group):

- H = Non-reservation area.
- J = Reservation accepted/recommended.
- K = Reservation required.
- L = One or more units reserved until 6 pm for handicapped use.
- HP = Host present

Type of Facilities Available (Camping):

- T = Tents
- U = Trailers

Special Features Located Within One Mile of the Site:

- 1 = Fishing
- 2 = River or stream
- 3 = Reservoir or lake (powerboats permitted)
- 4 = Reservoir or lake (no powerboats)
- 5 = Boat ramp
- 6 = Boat rental
- 7 = Floating, rafting, kayaking
- 8 = Swimming
- 9 = Marina
- 10 = Store
- 11 = Resort
- 12 = Restaurant
- 13 = Museum
- 14 = Cave
- 15 = Ghost town
- 16 = Canyon
- 17 = Trailhead
- 18 = Historic trail
- 19 = Nature trail
- 20 = Accessible by trail or boat only
- 21 = Wilderness access
- 22 = Waterfalls
- 23 = Geological area
- 24 = Handicapped facilities
- 25 = Evening program
- 26 = Scenic drive
- 27 = Timbered setting
- 28 = Open setting
- 29 = Corrals

FOR MORE INFORMATION

If you would like more information or detailed maps of the Bridger-Teton National Forest, please contact one of the following:

FOREST SUPERVISOR
Bridger-Teton National Forest
Forest Service Building
340 North Cache
Jackson WY 83001
(307) 739-5500

Kemmerer Ranger District
308 Highway 189 North
PO Box 31
Kemmerer WY 83101
(307) 877-4415

Big Piney Ranger District
315 South Front Street
PO Box 218
Big Piney WY 83113
(307) 276-3375

Greys River Ranger District
125 Washington Street
PO Box 339
Afton WY 83110
(307) 885-3166

Teton Division
Jackson District Office
25 Rosencrans Lane
PO Box 1689
Jackson WY 83001
(307) 739-5400

Teton Division
Blackrock Ranger Station
Highway 26/287
PO Box 278
Moran WY 83013
(307) 543-2386

Pinedale Ranger District
29 East Fremont Lake Road
PO Box 220
Pinedale WY 82941
(307) 367-4326

Bridger-Teton National Forest website:
www.fs.fed.us/r4/btnf



Explore the

Caribou-Targhee National Forest

National Forest

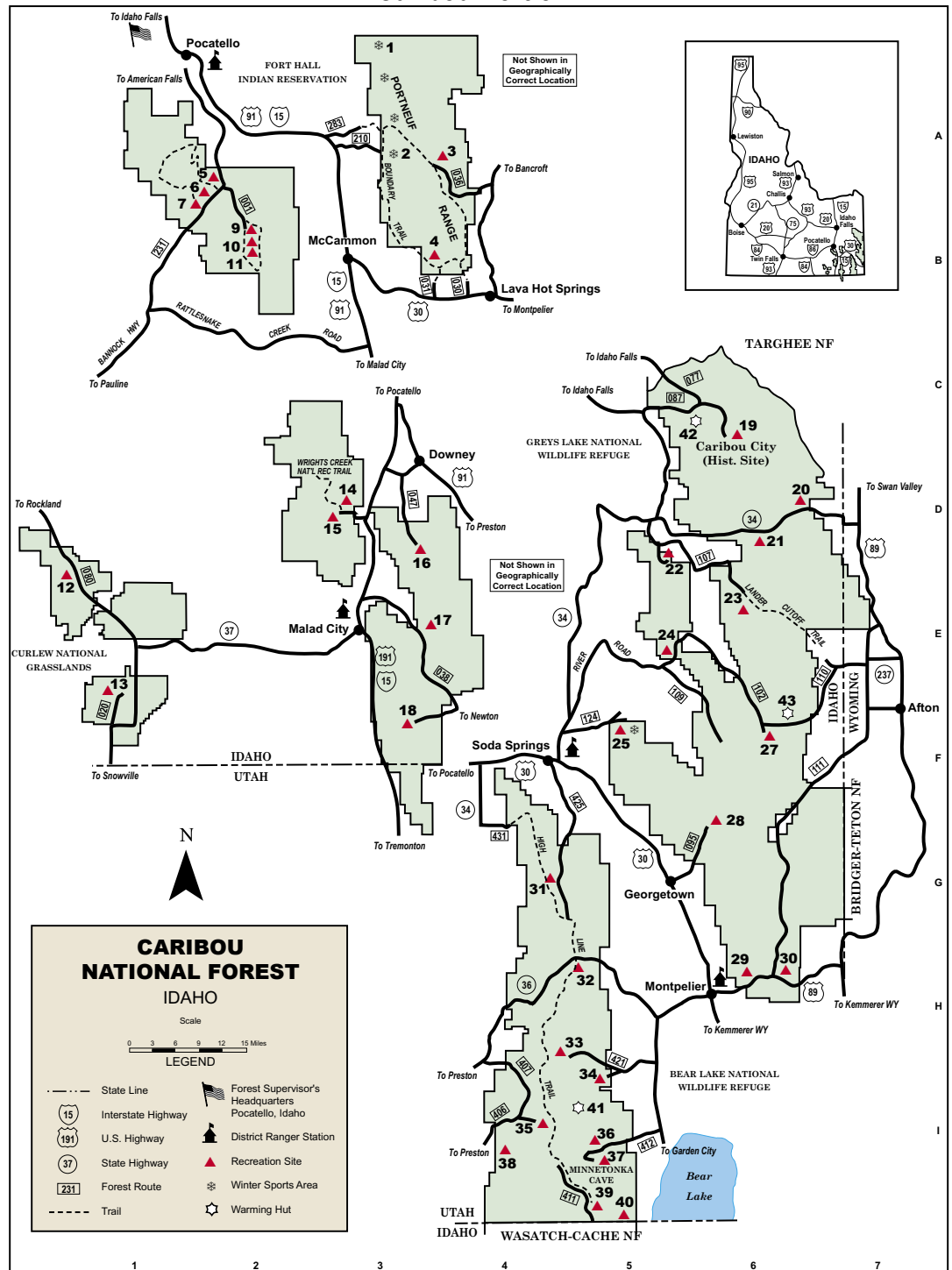
The Caribou Portion

Created in 1907 by President Theodore Roosevelt, the Forest now covers more than one million acres in southeast Idaho. The Forest, named for Caribou Mountain, is home to elk, deer, and moose – but not caribou.

In 1870, a colorful gold miner nicknamed “Carriboo Jack” and his partners discovered gold on Mt. Pisgah. Jessie Fairchild, aka “Carriboo Jack,” was famous in local mining towns for his tall tales of the Canadian caribou country. Soon, Mt. Pisgah was known as “Caribou Mountain.” The Mountain’s 20-year gold rush produced 50 million dollars in placer gold. Abandoned relics of this era can still be found near Caribou Mountain.

Several north-south mountain ranges of the Overthrust Belt characterize the Forest. Visitors will encounter both conifer and sagebrush-covered slopes. The Curlew National Grasslands near Malad are also administered by the Forest and are known for their upland game birds.

Caribou Portion



Recreation Opportunities

The Caribou National Forest offers an ample variety of outdoor activities such as camping, hiking, back packing, fishing, snowmobiling, and horseback and trail bike riding. More than a half-million visitor days are spent in recreation in the Forest each year. Developed campgrounds provide a diversity of scenic atmospheres and facilities, with most sites located in wooded

CARIBOU PORTION

Recreation Site Information

Location	Name	Elevation in Feet	Season of Use	Camping	Picnicking	Group	Drinking Water	Toilet	Holding Tank Disposal	Visitor Information	Number of Units	Special Features	Map Location
1	YURT SYSTEM	8000	Dec-Apr	F,A,K,T		F,A,K,T	A				4	17,27,31	A3
2	PEBBLE CREEK SKI AREA	6900	Dec-Apr									11,12,27,28	A3
3	BIG SPRINGS CAMPGROUND	6300	May-Sep	F,C,H,T,U	C,H,F	F,C,K,T,U	C	C			32	1,2,16,17,19,26,27,28	A3
4	BOUNDARY TRAIL	6500	Jun-Oct									16,17,19,27,28	B3
5	CHERRY SPRINGS NATURE AREA	5000	Mar-Nov		C,H	C,H				*		1,2,16,17,19,24,26,27,28	A2
6	ELKHORN/WEST FORK MINK	6900	Jun-Sep									16,17,27,28	A2
7	MINK CREEK NORDIC SKI/HIKING	6900	Dec-Apr									17,30	B2
9	SCOUT MOUNTAIN TRAIL	6900	Jun-Sep									17	B2
10	SCOUT MOUNTAIN CAMPGROUND	6900	May-Sep	F,C,H,T,U	F,B,H	C,T,K,U	C	C			41	16,17,19,24,26,27	B2
11	SCOUT MOUNTAIN PICNIC AREA	6900	Jun-Sep		C,H	H	A	A			12	17,19,27	B2
12	TWIN SPRINGS CAMPGROUND	4500	May-Oct	A,H,T,U	A,H,T,U		A	A			5	18,26,28	E1
13	CURLEW CAMPGROUND	4700	Apr-Nov	F,C,H,T,U	F,C,H	C,F,K,T,U	C	C			32	1,3,5,7,8,24,26,28	E1
14	WRIGHTS CREEK NAT'L REC TRAIL	6100	Jun-Oct									16,17,23,27,28	D3
15	SUMMIT CAMPGROUND	6100	May-Oct	F,C,H,T,U	F,C,H	C,K,T,U	C	C	*	13	1,2,17,23,24,27,28	D3	
16	CHERRY CREEK CAMPGROUND	4800	Jun-Sep	A,H,T,U	A,H,T,U			A			5	2,16,17,26,27	D3
17	THIRD CREEK CAMPGROUND	4600	Jun-Sep			F,C,K,T,U	C	C			1	1,2,3,16,17,27,28,31	E3
18	DRY CANYON CAMPGROUND	5000	Jun-Sep	A,H,T,U	A,H,T,U			A			3	16,17,26,27	F3
19	CARIBOU CITY	7000	Jul-Sep									26,27	C6
20	TIN CUP CAMPGROUND	5800	Jun-Sep	A,H,T,U				A			5	1,2,26,27	D6
21	PINE BAR CAMPGROUND	6300	Jun-Sep	B,H,T,U	B,H			C			5	1,2,17,27	D6
22	GRAVEL CREEK CAMPGROUND	6500	Jun-Sep	C,H,T,U		B,K		C			9	1,2,24,27	D5
23	LANDER CUT-OFF TRAIL	6500	Jun-Sep									16,17,18,20,27,28	E6
24	MILL CANYON CAMPGROUND	6500	Jun-Sep	A,H,T,U	A,H			A			10	2,27	E5
25	TRAIL CANYON RECREATION AREA	6900	Year Rnd	U		B,H		C				1,17,24,29,31	F5
27	DIAMOND CREEK CAMPGROUND	6900	Jun-Sep	A,H,T,U				A			6	2,27	F6
28	SUMMIT VIEW CAMPGROUND	7500	Jun-Sep	A,J,T,U	A,J	A,K	A	A			24	17,26,27	G6
29	MONTPELIER CANYON CAMPGROUND	6100	May-Oct	F,A,J,T,U	A,H			A			16	1,2,28	H6
29	MONTPELIER CANYON PICNIC AREA	6100	May-Oct	A,H	F,A,H			A			4	1,2,28	H6
30	MONTPELIER RESERVOIR	6000	Year Rnd									1,2,4,5,28	H6
31	8-MILE CANYON	6500	Jun-Sep	A,H,T	A,H			A			7	1,2,16,27	G4
32	EMIGRATION SUMMIT CAMPGROUND	7500	Jun-Sep	F,C,J,T,U	A,H	A,K		A			28	17,26,27	H5
33	PARIS ICE CAVES	6500	Jun-Sep									14	H5
34	PARIS SPRINGS CAMPGROUND	6000	Jun-Sep	A,J,T,U	A,K	A,K	A	A			12	1,2,16,19,26,27	I5
35	WILLOW FLAT CAMPGROUND	6000	Jun-Sep	F,C,J,T,U	A,F	A,K	B	B			57	1,2,17,19,27	I4
36	ST CHARLES CANYON CAMPGRD.	6500	Jun-Sep	F,B,J,T,U		F,B,K	B	B			5	1,2,16,17,23,27	I5
37	MINNETONKA CAVE	7700	Jun-Sep						*			14, Minnetonka Cave has guided tours, fee site	I5
38	ALBERT MOSER CAMPGROUND	6000	Jun-Sep	F,C,J,T,U	A,F	A,K	B	B			9	1,2,16,17,19,27	I4
39	HIGHLINE NATIONAL REC. TRAIL		Jun-Sep	A,T								16,17,27,28	I5
40	BEAVER CREEK CAMPGROUND	8000	Jul-Sep	A,H,T	A,H			A			5	1,2,16,17,26,27	I5
41	BLOOMINGTON CANYON YURT	7200	Dec-Mar	F,A,K		F,A,K		A			1	27,29	I5
42	CARIBOU WARMING HUT		Dec-Apr			A						27,28,29	C5
43	DIAMOND CREEK WARMING HUT		Dec-Apr			A						28	F6

KEY TO RECREATION SITE INFORMATION

Fees (Camping, Picnicking and Group):
F = Fee Charged

Modification of Facilities to Assist Users With Physical Impairments:

- A = Facilities not modified.
- B = Limited modification - At least one unit has been modified, but modification may not be sufficient to be usable by many individuals who are confined to a wheelchair.
- C = Significant modification - At least one unit has been modified to allow use by most individuals who are confined to a wheelchair.

Reservations (Camping, Picnicking, Group):

- H = Non-reservation area.
- J = Reservation accepted/recommended.
- K = Reservation required.
- L = One or more units reserved until 6 pm for handicapped use.

Type of Facilities Available (Camping):

- T = Tents
- U = Trailers
- V = Dispersed Camping Adjacent

Special Features Located Within One Mile of the Site:

- 1 = Fishing
- 2 = River or stream
- 3 = Reservoir or lake (powerboats permitted)
- 4 = Reservoir or lake (no powerboats)
- 5 = Boat ramp
- 6 = Boat rental
- 7 = Floating, rafting, kayaking
- 8 = Swimming
- 9 = Marina
- 10 = Store
- 11 = Resort
- 12 = Restaurant
- 13 = Museum
- 14 = Cave
- 15 = Ghost town
- 16 = Canyon
- 17 = Trailhead
- 18 = Historic trail
- 19 = Nature trail
- 20 = Accessible by trail or boat only
- 21 = Wilderness access
- 22 = Waterfalls
- 23 = Geological area
- 24 = Handicapped facilities
- 25 = Evening program
- 26 = Scenic drive
- 27 = Timbered setting
- 28 = Open setting
- 29 = Groomed snowmobile trail
- 30 = Groomed cross-country ski trail
- 31 = Warming hut

FOR MORE INFORMATION

If you would like more information or detailed maps of the Caribou-Targhee National Forest, please contact one of the following:

FOREST SUPERVISOR
Caribou-Targhee National Forest
Idaho Falls Headquarters
1405 Hollipark Drive
Idaho Falls ID 83401
(208) 557-5760

Soda Springs Ranger District
410 East Hooper Avenue
Soda Springs ID 83276
(208) 547-4356

Westside Ranger District
Malad Office
195 South 300 East
PO Box 146
Malad ID 83252
(208) 766-5900

Westside Ranger District
Pocatello Office
4350 Cliffs Drive
Pocatello ID 83204
(208) 236-7500

Montpelier Ranger District
322 North 4th Street
Montpelier ID 83254
(208) 847-0375

Caribou-Targhee National Forest web site:
www.fs.fed.us/r4/c-t

areas and accessible by good roads. Camping fees are based on the facilities provided in the campground.

Fishing and hunting are also popular activities on the Caribou. Approximately 250 miles of streams and 8,100 acres of lakes and reservoirs are within the Forest boundary. Game fish species include rainbow trout, eastern brook trout, brown trout, cutthroat trout, bluegill, and bass. Some of the best big game hunting in the West is found in the Forest. Game species include moose, elk, mule deer, bear, several grouse species, ducks, and geese. Hunting and fishing permits are available from the Idaho Department of Fish and Game.

With a ski area on the west side of Mt. Bonneville and several snowmobiling and cross-country ski trails on the Forest, winter recreation is a growing activity in southeastern Idaho. Over 300 miles of winter trails are groomed by the Idaho Department of Parks and Recreation.

There are approximately 1,200 miles of hiking and back packing trails in the Forest. Many trails are well maintained and marked. Some roads and trails are closed to motorized vehicles to protect soils, watersheds, and important wildlife habitat.

Some sites of special interest are:

- The Wright's Creek National Recreation Trail (14) runs north and south for 12 miles in the Elkhorn Mountain Range. This trail is open to all uses and activities. Indian Hill Trail leads to the top of Elkhorn Peak.

- The Lander Cutoff Trail (23) is the first government-built wagon road in the West. Used by wagon trains in the late 1800's, the Lander Cutoff took settlers from the Oregon Trail to California and is today on the National Register of Historic Places.

- Trail Canyon (25) is a great all-season play area with trails, picnicking area, and a large warming hut.

- The Highline National Recreation Trail (39) is 55 miles long and runs north and south in the gorgeous Bear River Mountain Range.

- Minnetonka Cave (37) located in St. Charles Canyon, is home to unique stalagmite and stalactite formations, a variety of bat species, and very friendly tour guides.

- Cherry Springs Nature Area (5) in Mink Creek Canyon offers a fully accessible nature trail and picnic area, just right for the avid bird watcher.

- Scout Mountain Campground (10) features improved campsites, the Justice Park day-use picnic area, a group area, and the beautiful Scout Mountain Nature Trail (9).



Discover the

Caribou-Targhee

National Forest

The Targhee Portion

The Targhee is a National Forest of contrasts! Its 1.8 million acres encompass semi-desert, sage-brush-dotted, arid land; timbered highlands and peaks over 10,000 feet; and streams, lakes, waterfalls, rivers, and wilderness areas. The Forest is located in southeastern Idaho, with a small portion in southwestern Wyoming. It borders Yellowstone and Grand Teton National Parks on the east, with its northern boundary along the Continental Divide.

Average summer daytime high temperatures are 70-80 degrees Fahrenheit, with evenings often 20-30 degrees cooler. Winter can be quite cold, sometimes dipping to -40 degrees Fahrenheit, particularly at the higher elevations. Snowfall can occur even during summer months. Visitors may need clothing appropriate for snow, rain, cold, or heat, especially for trips into mountainous areas.

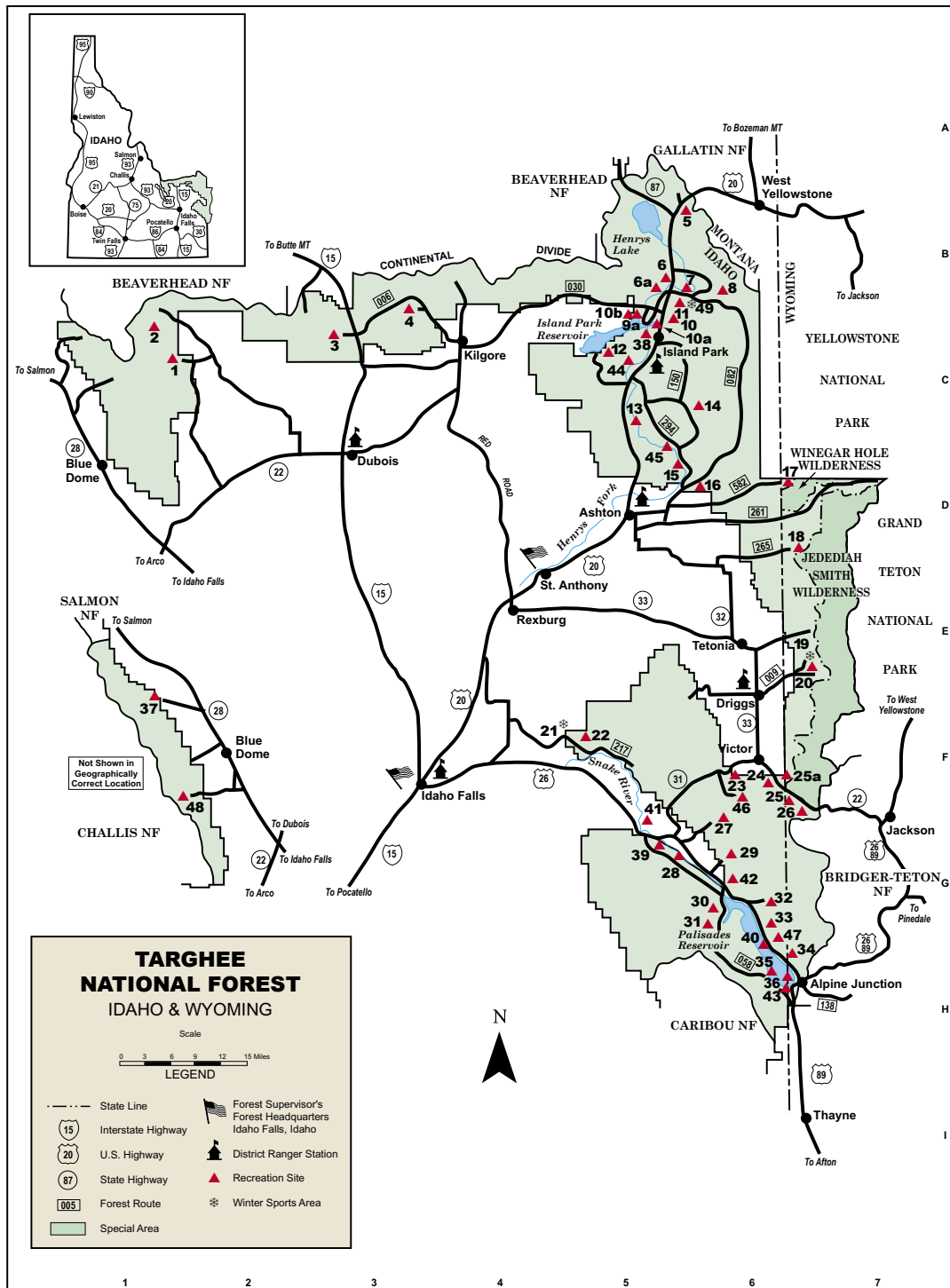
Recreation Opportunities

The Forest's varied landscape offers wonderful scenic beauty all year long. Diverse settings allow unlimited year-round recreation, whether you prefer more developed facilities such as campgrounds, ski resorts, and boat docks, or hiking, camping, and horseback riding in the open spaces of the back country.

Most campgrounds are adjacent to rivers or reservoirs. Camping fees are based on the facilities provided in the campground. Most undeveloped areas within the Forest are open to camping. The number of days you can spend in campgrounds and open forest areas is limited. Concessionaires manage many campgrounds under a special use agreement with the Forest Service.

Boating and water-skiing occur mainly on the Island Park and Palisades Reservoirs. Rafting, kayaking, and canoeing are popular sports on short stretches of the Snake River near Swan Valley and on the

Targhee Portion



Henry's Fork. Dams, large falls, and irrigation canals present hazards along several stretches of streams and rivers. The Big Springs Water Trail, the first National Recreation Water Trail established by the Forest Service, is on the Targhee. This



water trail offers a five-mile float on calm water where many species of wildlife can be seen.

Hunting and fishing are popular activities which require State license. Game species are moose, elk, antelope, mule deer, mountain goat, whitetail deer, bighorn sheep, black bear, small animals, and game birds. The Island Park area is world-renowned for its excellent stream and lake fly-fishing opportunities. Game fish are rainbow, eastern brook, brown and cutthroat trout, kokanee, salmon and whitefish.

Other areas of the Forest provide more solitude and similar successes.

The Targhee National Forest offers abundant back country to experience. In addition to the more common activities previously listed, there are photography, rock climbing, rock collecting, bird watching, berry picking, gold panning, and mushroom collecting. Some activities may require a permit.

Over 1,200 miles of trails exist on the Targhee, with over 40 trail heads serving the trail system. Not all trails are maintained every year.

TARGHEE PORTION

Recreation Site Information

Location	Name	Elevation in Feet	Season Of Use	Camping	Picnicking	Group	Drinking Water	Toilet	Holding Tank Disposal	Visitor Information	Number of Units	Special Features	Map Location
1	WEBBER CREEK	7000	Jul-Aug	A,H,T,U	A			B			4	1,2,16,17,27	C1
2	FRITZ CREEK	7200										17,27	C1
3	STODDARD CREEK	6200	Jun-Sep	C,H,F,T,U	C	F,K,T,U,C	C	C			24	17,27	C3
4	STEEL CREEK	6600	Jun-Sep	C,J,T,U	C	F,C,T,U,K	C	C			1	1,2,27	C3
5	HOWARD SPRINGS	7000	Jun-Sep		A,H		A	C				27	B5
6	FLAT ROCK	6400	Jun-Sep	F,B,T,U,J			C	C			40	1,2,7,10,11,12,27	B5
6a	UPPER COFFEE POT	6300	Jun-Sep	F,B,H,T,U			C	C			15	1,2,17,27	B5
7	BIG SPRINGS WATER TRAIL	6400	May-Sep					B				1,2,7,17,19,27	B6
8	BIG SPRINGS	6400	Jun-Sep	F,B,H,T,U	B,H		B	B			17	2,17,19,23,24,27	B6
9	McCREA BRIDGE	6200	Jun-Sep	F,C,T,U,J			C	C			25	1,2,3,5,7,8,27	C5
9a	MILL CREEK	6200	Jun-Oct	A,H,T,U				C				1,3,5,27	C5
10b	BUTTERMILK	6200	Jun-Sep	F,C,H,T,U		F,C,J,T,U	C	C			54	1,3,5,7,8,27	C5
10a	ISLAND PARK RAMP	6300	Jan-Dec				A					1,3,5,7,8,27	C5
10	BOX CANYON	6200	Jun-Sep	F,C,H,T,U			C	C			18	1,2,27	C5
11	BUFFALO	6200	Jun-Oct	F,C,T,U,J		F,C,J,U,T	C	C			127	1,2,7,10,11,12,24,27	C5
12	WEST END	6200	Jun-Oct				A	A				1,3,5,7,8,27	C5
13	RIVERSIDE	6200	Jun-Sep				A	C			57	1,2,7,24,27	C5
14	POLE BRIDGE	6300	Jun-Oct	A,H,T,U			A	A			20	1,2,27	C6
15	GRANDVIEW	6200	Jun-Oct	C,H,T,U			C	C			11	16,22,23,26,27	D5
16	WARM RIVER	5200	Jun-Oct	C,F,H,T,U,J	C,H,J	K,F	C	C			15	1,2,7,16,17,26,27	D6
17	CAVE FALLS	6200	Jun-Sep	F,H,A,T,U	A,H	A,H	A	A			16	1,2,17,22,27	D6
18	COYOTE MEADOWS	6500	Jun-Sep					A				16,17,21,27	D6
19	GRAND TARGHEE SKI AREA	8000	Yr-round									11,12	E6
20	TETON CANYON	7200	Jun-Sep	F,C,H,T,U,J			C	C			20	1,2,16,17,21,27	E7
21	KELLY CANYON SKI AREA	5900	Dec-Mar										F4
22	TABLE ROCK	5800	Jun-Aug	F,A,H,T,U	A,H		A	C			9	16,27	F5
23	PINE CREEK	6600	Jun-Sep	F,B,H,T,U				C			9	16,26,27	F6
24	MIKE HARRIS	6200	Jun-Sep	F,B,H,T,U			A	C			12	1,2,16,17,26,27	F6
25	TRAIL CREEK	6600	Jun-Sep	F,H,A,T,U			C	C			11	1,2,16,26,27	F6
25a	MOOSE CREEK	6600	Jun-Sep									1,2,16,17,21,27	F6
26	COAL CREEK	7200	Jun-Sep					B				1,2,16,17,21,27	F6
27	RAINEY CREEK	5700	Jun-Sep					C				1,2,16,17,27	G6
28	FALLS	5400	Jun-Sep	F,H,C,T,U		F,T,U,J	A	B			24	1,2,22,27	G5
29	PALISADES	5600	Jun-Sep	F,H,C,T,U			C	C			8	1,2,16,17,27	G6
30	CALAMITY	5800	Jun-Sep	F,H,B,T,U	H,B		B	C			42	1,3,5,7,8,27	G6
31	BEAR CREEK	5800	Jun-Oct									1,2,3,16,17	G6
32	BIG ELK CREEK	5800	Jun-Sep	F,A,H,T,U	B,H	F,K,T,U	A	C			21	1,2,3,5,16,17,27,28	G6
33	BLOWOUT RAMP & CAMPGROUND	5800	Jun-Oct	F,B,H,T,U			B	C			10	1,3,5,8,26,27,28	G6
34	ALPINE	5800	Jun-Sep	F,B,H,T,U		F,J,T,U	B	C			22	1,3,26,27	H6
35	MCCOY CREEK	5800	Jun-Sep	F,A,H,T,U			A	C			19	1,3,5,27	H6
36	GRAND CANYON	5800	Jun-Oct									1,3,5,28	H6
37	CHARCOAL KILNS	7400	Jun-Sep		B,H		A	B	B			18,28	F1
38	BOX CANYON DAM	6200	Jun-Oct					B				1,2,7,16	C5
39	SPRING CREEK	5500	Jun-Oct					C				1,2,5,7	G5
40	INDIAN CREEK	5800	Jun-Oct					A				1,2,5,7	G6
41	CONANT (BLM)	5500	Jun-Oct		C,H		C	C	C			1,2,5,7,10,12,24,28	G5
42	RIVERSIDE PARK (BOR)	5600	Jun-Oct	C,H,T,U	C,H		C	C	C	27		1,2,5,7,28	G6
43	ALPINE WILDLIFE VIEWING	5800	Jun-Oct						C			1,2,3,28	H6
44	LAST CHANCE FISHERMAN PARKING	6100	Jun-Oct				B	C	C			1,2,10,12,24,28	C5
45	UPPER MESA FALLS	5600	Jun-Oct				C	C	C			1,2,16,19,22,23,24,26,27	D5
46	NORTH RAINEY CREEK	6500	Jun-Oct					C				1,2,16,17,27	F6
47	SOUTH INDIAN CREEK	6200	Jun-Oct					A				2,16,17,27	G6
48	EIGHT MILE	6800	Jun-Oct					A				16,17,27	F1
49	BIG SPRINGS SNOW PARK	6400	Jan-Dec			F,B,J,T,U		B			1	17,27	B5
50	REUNION FLAT	6900	Jun-Sep		FCHJTU	FCHJTU	C	C			9	1,2,16,26,27	E6

When traveling in groups of 15 or more, obtain a free group permit in advance at any Forest office.

For winter recreation, counties within and adjacent to the Forest groom between 400-600 miles of snowmobile trails. Registration and license fees help finance trail grooming. The Island Park and Big Hole areas are considered a snowmobiler's paradise with their vast number of groomed trails. The well known Two Top National Recreation Snowmobile Trail is in this area. Groomed trails and open back country areas for cross-country skiing and snowshoeing are available on the Forest. Two area ski resorts offer opportunities for all types of snow skiing.



KEY TO RECREATION SITE INFORMATION

Fees (Camping, Picnicking and Group):
F = Fee Charged

Modification of Facilities to Assist Users With Physical Impairments:

- A = Facilities not modified.
- B = Limited modification - At least one unit has been modified, but modification may not be sufficient to be usable by many individuals who are confined to a wheelchair.
- C = Significant modification - At least one unit has been modified to allow use by most individuals who are confined to a wheelchair.

Reservations (Camping, Picnicking, Group):

- H = Non-reservation area.
- J = Reservation accepted/recommended.
- K = Reservation required.
- L = One or more units reserved until 6 pm for handicapped use.

Type of Facilities Available (Camping):

- T = Tents
- U = Trailers

Special Features Located Within One Mile of the Site:

- 1 = Fishing
- 2 = River or stream
- 3 = Reservoir or lake (powerboats permitted)
- 4 = Reservoir or lake (no powerboats)
- 5 = Boat ramp
- 6 = Boat rental
- 7 = Floating, rafting, kayaking
- 8 = Swimming
- 9 = Marina
- 10 = Store
- 11 = Resort
- 12 = Restaurant
- 13 = Museum
- 14 = Cave
- 15 = Ghost town
- 16 = Canyon
- 17 = Trailhead
- 18 = Historic trail
- 19 = Nature trail
- 20 = Accessible by trail or boat only
- 21 = Wilderness access
- 22 = Waterfalls
- 23 = Geological area
- 24 = Handicapped facilities
- 25 = Evening program
- 26 = Scenic drive
- 27 = Timbered setting
- 28 = Open setting

FOR MORE INFORMATION

If you would like more information or detailed maps of the Caribou-Targhee National Forest, please contact one of the following:

FOREST SUPERVISOR
Caribou-Targhee National Forest
Idaho Falls Headquarters
1405 Hollipark Drive
Idaho Falls ID 83401
(208) 557-5760

FOREST SUPERVISOR
Caribou-Targhee National Forest
499 North 2400 East
St. Anthony ID 83445
(208) 624-3151

Dubois Ranger District
225 West Main
PO Box 46
Dubois ID 83423
(208) 374-5422

Ashton/Island Park Ranger District
30 South Highway 20-191
PO Box 858
Ashton ID 83420
(208) 652-7442

Palisades Ranger District
3659 East Ririe Highway
Idaho Falls ID 83401
(208) 523-1412

Teton Basin Ranger District
515 South Main
PO Box 777
Driggs ID 83422
(208) 354-2312

Caribou-Targhee
National Forest web site:
www.fs.fed.us/r4/c-t

Experience the Payette National Forest

The Forest

The Payette National Forest spans over 2.3 million acres of some of west-central Idaho's most beautiful and diverse country. In one day you can travel from hot desert grasslands through cool conifer forests to snow capped peaks. This spectacular land is bordered by two of the deepest canyons in North America: The Salmon River Canyon on the north and Hells Canyon of the Snake River on the west. To the east lies the 2.4-million-acre Frank Church-River of No Return Wilderness, the largest congressionally designated Wilderness in the lower 48 states. To the south, the Payette is bordered by the Boise National Forest.

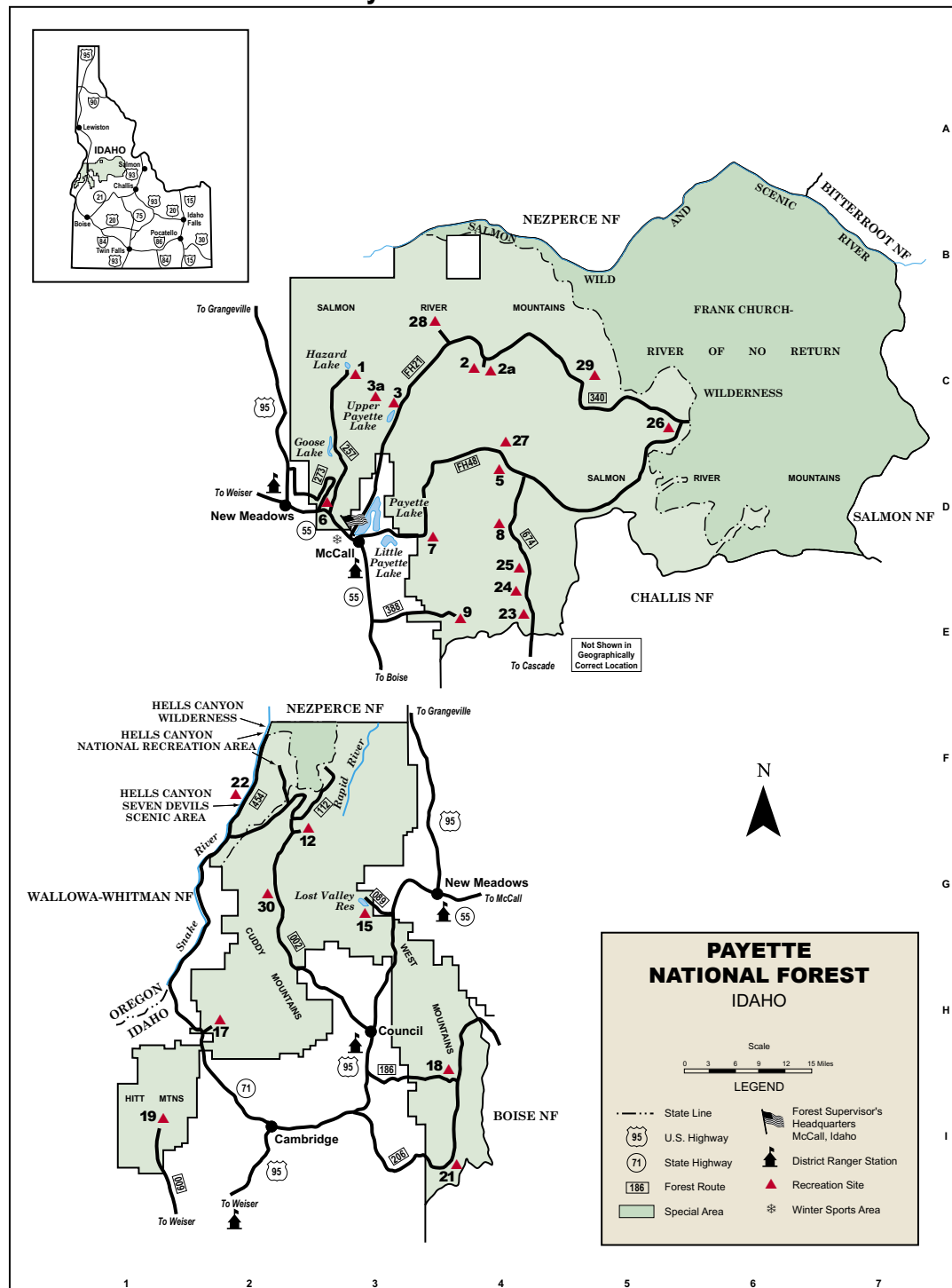
Geology and topography play an important role in determining resource management on various areas of the Forest. For example, the presence of valuable minerals, scenic beauty of the landscape, and different soil conditions are all influenced by geologic factors.

Recreation Opportunities

The Payette National Forest offers many recreation opportunities, outstanding physical settings, and visual resources. The Payette includes a large portion of the Frank Church-River of No Return Wilderness. Pristine, high mountain lakes lie along the ridge between the South Fork Salmon River and the North Fork Payette River drainages. Lakes grace the Lava Ridge-Hard Butte area east of the Little Salmon River drainage.

The Forest supports sizeable big game herds, game bird populations, and a wide variety of non-game species. Spring through Fall, the Forest provides fishing, hunting, hiking, back packing, camping, picnicking, pleasure driving, sightseeing, horseback riding, off-highway vehicle driving, nature study, and forest product gathering (e.g., firewood, berries and mushrooms). Heavy winter snow pack is popular for downhill and cross-country skiing, snowmobiling, and snow play. Two downhill ski areas are located on the Payette National Forest.

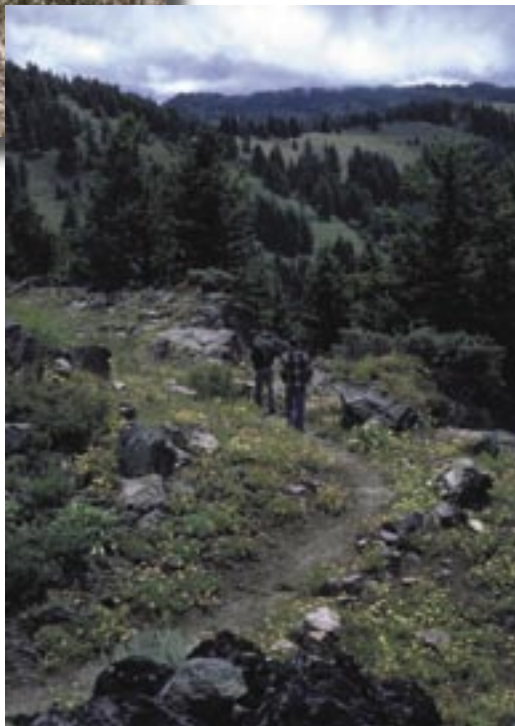
Payette National Forest



PAYETTE NATIONAL FOREST

Recreation Site Information

Location	Name	Elevation in Feet	Season Of Use	Camping	Picnicking	Group	Drinking Water	Toilet	Holding Tank Disposal	Visitor Information	Number of Units	Special Features	Map Location
1	HAZARD LAKE	7040	Jun-Sep	F,A,H,T,U	A,H		A	A			12	1,4,17,27	C3
2	CHINOOK	5680	Jun-Sep	F,A,H,T,U	A,H		A	A			5	1,2,17,27	C4
2A	CHINOOK HORSE CAMP	5700	Jun-Sep	F,B,H,T,U	B,H			C			4	1,2,7,17,27 stock holding (hitch racks)	C4
3	UPPER PAYETTE LAKE	5600	Jun-Sep	F,C,H,T,U	C,J		B	C			19	1,2,3,5,8,17,24,26,27	C3
3A	UPPER PAYETTE LAKE GROUP	5600	Jun-Sep	F,C,J,T,U		J	B	C			5	1,2,3,17,24,26,27	C3
5	PONDEROSA	4000	Jun-Oct	F,B,H,T,U	B,H		B	A			14	1,2,17,27	D4
6	LAST CHANCE	4600	Jun-Oct	F,C,H,T,U	C,H		B	C			28	1,2,17,24,27	D3
7	LAKE FORK	5360	Jun-Sep	F,A,H,T,U	A,H		A	A			9	1,2,17,27	D3
8	BUCKHORN	3800	Mar-Nov	F,B,H,T,U	B,H		B	B			11	1,2,7,27	D4
9	KENNALLY CREEK	5600	Jun-Sep	F,A,B,H,T,U	B,H		A	B			12	1,2,17,24,27 hitch rails	E4
12	HUCKLEBERRY	4800	Jun-Oct	F,A,H,T,U	A,H		A	C			8	1,2,17,27	G2
15	COLD SPRINGS	4800	Jun-Nov	F,A,C,H,T,U	A,C,J	K	C	C	*		31	1,3,8,27	G3
17	BROWNLEE	4240	Jun-Oct	F,A,H,T,U	A,H		A	A			11	1,2,17,27	H2
18	CABIN CREEK	4200	Jun-Oct	F,A,H,T,U	A,H		A	C			12	1,2,17,22,27	I4
19	SPRING CREEK	4800	Jun-Oct	F,C,H,T,U	C,H	J	B	C			14	1,2,19,27	I1
21	BIG FLAT	4080	Jun-Oct	F,B,H,T,U	A,H		A	C			13	1,2,24,27	I4
22	BIG BAR	1800	Apr-Nov	A,T,U	A,H			C				1,3,8,16,17,23,26,28	F2
23	POVERTY FLAT	4225	Mar-Nov	F,B,H,T,U	B,H			C			10	1,2,7,17,27 stock holding (hitch racks)	E4
24	4 MILE	3900	Mar-Nov	F,B,H,T,U	B,H			B			4	1,2,17,27 stock holding (hitch racks)	E4
25	CAMP CREEK	4062	Mar-Nov	F,B,H,T,U	B,H			B			4	1,2,17,27 stock holding (hitch racks)	E4
26	BIG CREEK AIRSTRIP	4875	Jun-Oct	F,B,H,T,U	B,H		B	B	A		4	2,11,12,20,27	C5
27	SECESH HORSE CAMP	4000	Jun-Oct	F,B,H,T,U	B,H			B			5	1,2,7,17,27 stock holding (hitch racks)	D4
28	BURGDORF ADMINISTRATIVE SITE	6082	Jun-Nov	F,B,H,T,U	A,H		A	A			4	2,26,27	C4
29	SHIEFER	3050	Jun-Oct	A,H,T,U	A,H			A				1,2,27	C5
30	LAFFERTY	4250	Jun-Oct	F,C,H,T,U	C,H		B	B			8	1,2,24,27	G2



KEY TO RECREATION SITE INFORMATION

Fees (Camping, Picnicking and Group):
F = Fee Charged

Modification of Facilities to Assist Users With Physical Impairments:

- A = Facilities not modified.
- B = Limited modification - At least one unit has been modified, but modification may not be sufficient to be usable by many individuals who are confined to a wheelchair.
- C = Significant modification - At least one unit has been modified to allow use by most individuals who are confined to a wheelchair.

Reservations (Camping, Picnicking, Group):

- H = Non-reservation area.
- J = Reservation accepted/recommended.
- K = Reservation required.
- L = One or more units reserved until 6 pm for handicapped use.

Type of Facilities Available (Camping):

- T = Tents
- U = Trailers

Special Features Located Within One Mile of the Site:

- 1 = Fishing
- 2 = River or stream
- 3 = Reservoir or lake (powerboats permitted)
- 4 = Reservoir or lake (no powerboats)
- 5 = Boat ramp
- 6 = Boat rental
- 7 = Floating, rafting, kayaking
- 8 = Swimming
- 9 = Marina
- 10 = Store
- 11 = Resort
- 12 = Restaurant
- 13 = Museum
- 14 = Cave
- 15 = Ghost town
- 16 = Canyon
- 17 = Trailhead
- 18 = Historic trail
- 19 = Nature trail
- 20 = Accessible by trail or boat only
- 21 = Wilderness access
- 22 = Waterfalls
- 23 = Geological area
- 24 = Handicapped facilities
- 25 = Evening program
- 26 = Scenic drive
- 27 = Timbered setting
- 28 = Open setting

FOR MORE INFORMATION

If you would like more information or detailed maps of the Payette National Forest, please contact one of the following:

FOREST SUPERVISOR
Payette National Forest
800 West Lakeside Avenue
PO Box 1026
McCall ID 83638
(208) 634-0700

Weiser Ranger District
851 East 9th Street
Weiser ID 83672
(208) 549-4200

McCall Ranger District
102 West Lake Street
PO Box 1026
McCall ID 83638
(208) 634-0400

Council Ranger District
500 East Whitely Avenue
PO Box 567
Council ID 83612
(208) 253-0100

New Meadows Ranger District
3674 Highway 95
PO Box J
New Meadows ID 83654
(208) 347-0300

Krassel Ranger District
500 North Mission Street
PO Box 1026
McCall ID 83638
(208) 634-0600

Payette National Forest web site:
www.fs.fed.us/r4/payette

Explore the Salmon- Challis National Forest

The Forest

The Salmon-Challis National Forest covers over 4.3 million acres, of which over 1 million acres are located within the Frank Church-River of No Return Wilderness. Rugged and remote, this country offers adventure, solitude, and breathtaking scenery. Panoramic vistas highlight travel atop the Continental Divide; northwest-southeast trending mountain ranges culminate in the jagged heights of Mt. Borah, Idaho's tallest peak; the Wild and Scenic Middle Fork and Salmon Rivers plunge through the shadowy depths of immense canyons; and sagebrush slopes are blanketed with colorful displays of wildflowers in spring.

For over 8,000 years, ancestors of the Shoshone-Bannock people have lived in this region. White settlement began shortly after the Lewis and Clark Expedition traveled through the territory in 1805. Initially, fur trappers then miners worked this area. The development of Salmon, Challis, and their surrounding communities followed and by the 1880's were flourishing. Traces of the past can be found throughout the Forest. Remember, leave these clues untouched to allow the next visitors discovery of their heritage.

The Headquarters Office is located in Salmon, Idaho. There are currently seven administrative units and two natural research areas: the Challis, Salmon/Cobalt, Leadore, Lost River, Middle Fork, North Fork, and Yankee Fork Ranger Districts.

Recreation Opportunities

Most roads branch off main highways and turn to gravel or dirt surfaces, with many being suitable for sedans, while others require 4-wheel drive vehicles. Recommended travel precautions are to have a full tank of gas and a good spare tire.

Three popular road tours: the Custer Motorway Loop, the Lewis and Clark Backcountry Byway, and the Salmon River Road, take you through the Salmon River mountains, to the crest of the Continental Divide, and along the scenic Salmon River. You will discover historic mining towns and share their history of mining life. You will be able to trace the steps of the 1805 expedition that changed the West. And, while exploring you may catch glimpses of Rocky Mountain sheep, mountain goat, bald eagles, and river otter, among other wildlife living in the Forest.

Known as the "white water capital of the world," the Salmon and Middle Fork Rivers offer adventures to provide a lifetime of memories. Trip lengths vary and can be arranged privately or through a licensed outfitter. Permit applications for the wild section of the

Main Salmon River and for the Middle Fork River are available at the North Fork and Middle Fork Ranger Districts and on the Forest web page (www.fs.fed.us/r4/sc) from October 1 - January 31.

Nearly 3,292 miles of trails traverse the Forest, almost half of which are located in the Wilderness. Hiking season is generally between April and October, with elevations above 7,500 feet usually clear of snow by July 4. Trails range from moderate to difficult. Many non-wilderness trails are designated for motorized use. A Forest Travel Plan and personnel at Forest offices can help determine the best spot for you.

Hunting opportunities for deer, elk, bighorn sheep, moose, mountain goat, black bear, and mountain lion exist on much of the Forest. Hunt on your own or with a licensed outfitter. Be sure to check out chukar, grouse, and goose hunting opportunities as well.

Most streams and lakes on the Forest are home to trout. Steelhead average 4-6 pounds, with the occasional 15-20 pounder providing the experience of a lifetime. Mackay Reservoir, situated on neighboring Bureau of Land Management managed land, offers good angling for kokanee salmon. For additional information on

fishing or hunting regulations, contact the Idaho Department of Fish and Game at (208) 756-2271; P.O. Box 1336, Salmon, Idaho 83467, or visit their web site at www2.state.id.us/fishgame.

There are a wide variety of opportunities for beginners to advanced downhill skiers, snow boarders, and telemarkers. Williams Creek Summit offers 22 miles of moderate to difficult cross-country ski trails, or you can try your back-country skiing skills on Copper Mountain. Gentler, groomed trails at Chief Joseph Pass on the Idaho-Montana border (Beaverhead National Forest) provide fun for the whole family. Local snowmobile clubs maintain a number of groomed routes on the Ridge Road to the Stanley-Landmark Snowmobile Trail system. Please respect sharing the trails with a diversity of users.

Winter anglers may try their skills at Jimmy Smith and Williams Lake, a 30-minute drive from Salmon.

Most campgrounds on the Forest have at least one wheelchair accessible site. Williams Lake provides wheelchair accessible spots for both fishing and picnicking.





FOR MORE INFORMATION

If you would like more information or detailed maps of the Salmon-Challis National Forest, please contact one of the following:

FOREST SUPERVISOR
Salmon-Challis National Forest
50 Highway 93 South
Salmon ID 83467
(208) 756-5100

Challis Ranger District
Highway 93
HC 63 Box 1669
Challis ID 83226
(208) 879-4100

Lost River Ranger District
Highway 93
PO Box 507
Mackay ID 83251
(208) 588-3400

Middle Fork Ranger District
Highway 93
PO Box 750
Challis ID 83226
(208) 879-4101
(Middle Fork River Permits)

Yankee Fork Ranger District
Highway 75
HC 67 Box 650
Clayton ID 83227
(208) 838-3300

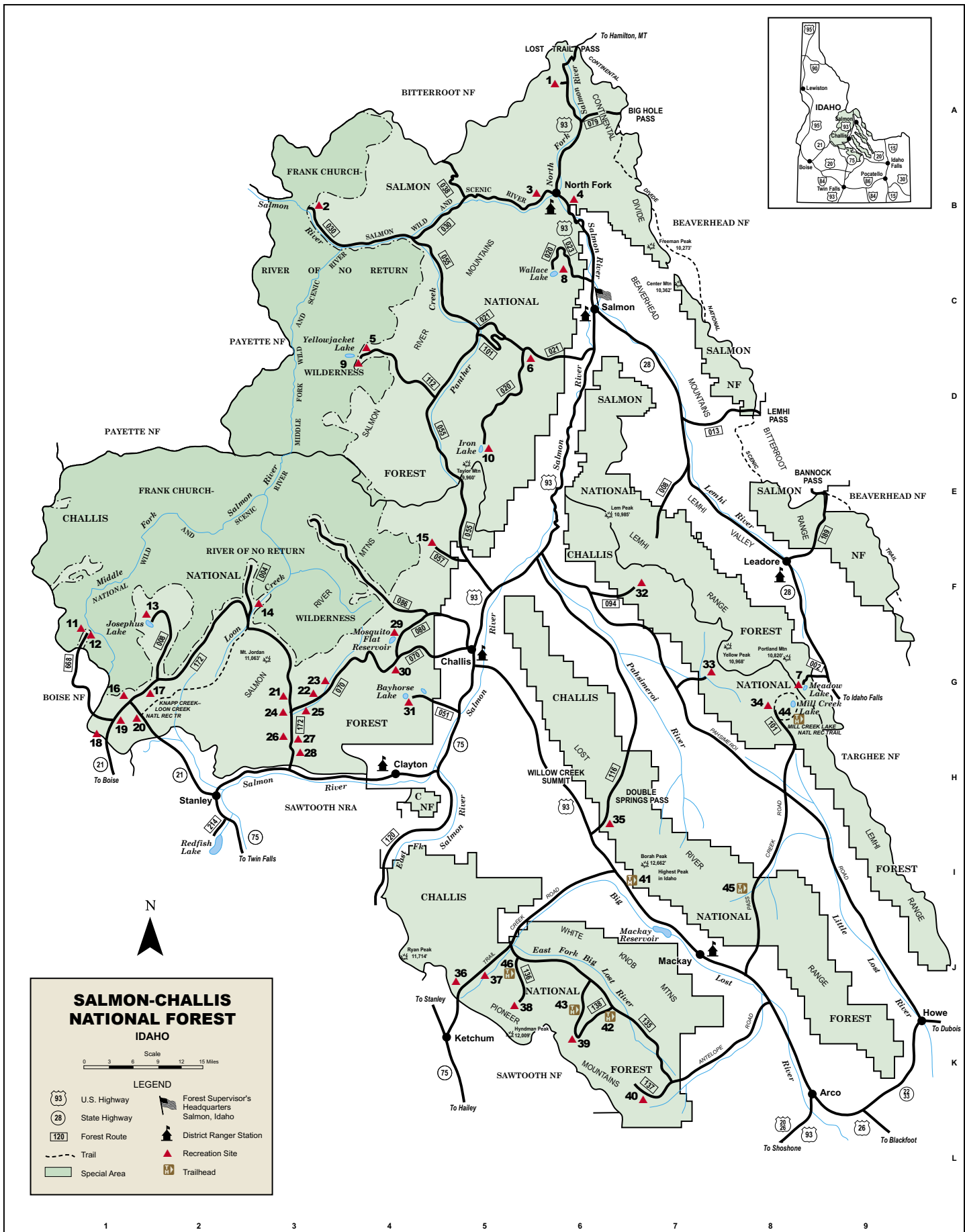
North Fork Ranger District
100 River Road
PO Box 180
North Fork ID 83466
(208) 865-2700
(Main Salmon River Permits)

Leadore Ranger District
176 North Railroad Street
PO Box 180
Leadore ID 83464
(208) 768-2500

Salmon/Cobalt Ranger District
50 Highway 93 South
Salmon ID 83467
(208) 756-5100

Salmon-Challis National Forest web site:
www.fs.fed.us/r4/sc

Salmon-Challis National Forest



SALMON-CHALLIS NATIONAL FOREST

Recreation Site Information

Location	Name	Elevation in Feet	Season of Use	Camping	Picnicking	Group	Drinking Water	Toilet	Holding Tank Disposal	Visitor Information	Number of Units	Special Features	Map Location
1	TWIN CREEK	5100	Jun-Oct		A,H	H	A	C					A6
2	CORN CREEK	2800	Mar-Nov	F,B,H,T,U	B,H		A	C			16	1,2,5,7,16,17,21,26,27	B3
3	DEADWATER SPRING	3500	Mar-Nov		A,H	H	A	C			7	1,2,5,7,16,24,26,28	B6
4	WAGONHAMMER SPRING	3900	Mar-Nov		C,H	C,H	C	C			4	17,18,27, No camping, just picnicking	B6
5	CRAGS	8400	Jul-Oct	F,A,H,T,U	A,H	H	A	A			14	17,21,27	D4
6	COUGAR POINT	6600	May-Sep	F,A,H,T,U	A,H	H	A	A			18	27	D5
7	MEADOW LAKE	9100	Jul-Sep	F,B,T,U	B		C	B			16	1,4,15,26,27	G8
8	WALLACE LAKE	8800	Jun-Sep	F,A,H,T,U	A,H	H	A	A			12	1,4,27,	C6
9	YELLOWJACKET LAKE	8000	Jun-Sep	A,H,T,U	A,H	H	A	A			7	1,4,27	D4
10	IRON LAKE	8800	Jun-Sep	F,A,H,T,U	A,H	H	A	A			6	1,4,17,27	E5
11	BOUNDARY CREEK	5800	Jun-Sep	F,A,H,T,U			A	A	*		14	1,2,5,7,16,17,19,21,26,27	G1
12	DAGGER FALLS	5800	Jun-Sep	F,C,H,T,U	F,C,H			C			10	1,2,7,16,17,19,21,22,24,26,27	G1
13	JOSEPHUS LAKE	7200	Jul-Sep	A,H,T	A,H			A			3	1,2,4,17,19,21,26,27	F1
14	TIN CUP	5600	Jul-Sep	A,H,T,U	A,H		A	A			13	1,2,16,17,19,21,26,27	F3
15	WEST FORK	6600	Jun-Sep	A,H,T	A,H			A			1	1,2,16,21,26,27	F4
16	LOLA CREEK	6400	Jun-Sep	F,A,H,T,U	F,A,H		A	B			27	1,2,7,16,17,19,21,24,26,27	G1
17	BEAVER CREEK	6400	Jul-Sep	F,B,H,T,U	F,C,H		A	B			12	1,2,16,17,19,21,24,26,28	G1
18	BENCH CREEK	6800	Jul-Sep	A,H,T,U	A,H		A	C			5	17,19,26,27	H1
19	BANNER CREEK	6800	Jul-Sep	A,H,T,U	A,H			C			3	26,27	H1
20	THATCHER CREEK	6500	Jul-Sep	F,A,H,T,U	F,A,H		A	C			5	1,2,26,28	H1
21	YANKEE FORK DREDGE	6200	Jun-Sep					B				13,16,26,28	G3
22	CUSTER	6600	Jul-Sep	A,H,T,U	A		A	A			6	1,2,16,23,26,27	G3
23	EIGHTMILE	7000	Jul-Sep	A,H,T,U	A			A			2	1,2,16,26,28	G3
24	BONANZA	6200	Jun-Sep	A,T,U	A,T,U	F,A,K	A	B			8	1,2,15,26,27	G3
25	CUSTER MUSEUM	6200	Jun-Sep					B				13,15,16,18,24,26,28	G3
26	POLE FLAT	6200	Jun-Sep	F,A,H,T,U	F,A,H	A,H	A	A			12	1,2,16,26,27	H3
27	FLAT ROCK	6200	Jun-Sep	F,A,H,T,U	F,A,H		A	A			9	1,2,16,26,27	H3
28	BLIND CREEK	6100	Jun-Sep	A,F,H,T,U	F,A,H		A	B			5	1,2,7,16,26,27	H3
29	MOSQUITO FLAT	7200	Jun-Sep	B,H,T,U	B,H		A	C			11	1,3,5,24,26,28	G4
30	MILL CREEK	7600	Jun-Sep	F,B,H,T,U	F,B	F,B,K	A	B			8	1,2,16,24,26,27	G4
31	BAYHORSE LAKE	8600	Jul-Sep	B,H,T,U	A,H			B			7	1,4,26,27	G4
32	MORSE CREEK	6500	Jun-Sep	A,H,T,U	A,H			A			3	1,2,16,17,19,26,27	F7
33	BIG CREEK	6600	Jun-Sep	A,H,T,U	A,H			A			3	1,2,16,17,19,26,27	G7
34	TIMBER CREEK	8000	Jul-Oct	F,B,H,T,U	F,B,H		B	C			12	1,2,16,26,27	G8
35	BORAH PEAK EARTHQUAKE		Mar-Nov	Day Use Only				A			3	23,28	I6
36	PARK CREEK	7700	Jun-Oct	F,A,H	F,A,H	H	A	A			12	1,2,16,26,27	J5
37	PHI KAPPA	7100	Jun-Oct	F,A,H,T,U	F,A,H		A	A			21	1,2,16,26,27	J5
38	WILDHORSE	7400	Jun-Oct	F,A,H,T,U	F,A,H	H	A	A			12	1,2,16,17,19,26,27	J5
39	STARHOPE	8000	Jun-Oct	F,B,H,T,U	F,B,H		B	C			21	1,2,16,17,19,26,27	K6
40	IRON BOG	7600	May-Oct	F,C,H,T,U	F,C,H		A	C			21	1,2,16,26,28	K7
41	BORAH PEAK TRAILHEAD	7100	Apr-Nov	C,H,T,U	C,K			C			5	17,28	I7
42	LAKE CREEK TRAILHEAD	8000	Jun-Oct	C,H,T,U	C,K		A	C			4	1,2,17,28	K6
43	BROAD CANYON TRAILHEAD	7800	Jun-Oct	C,H,T,U	C,H			C			8	17,27	J6
44	MILL CREEK TRAILHEAD	7300	Jun-Oct	C,H,T,U	C,H			C			6	1,2,17,27	G8
45	LORISTICA GROUP SITE	8000	Jun-Oct	F,K,T,U	K	K		C			8	2,27	I8
46	FALL CREEK TRAILHEAD	7200	Jun-Oct	C,H,T,U	C,H			C			1	1,2,22,28	J5

KEY TO RECREATION SITE INFORMATION

Fees (Camping, Picnicking and Group):
F = Fee Charged

Modification of Facilities to Assist Users With Physical Impairments:

- A = Facilities not modified.
- B = Limited modification - At least one unit has been modified, but modification may not be sufficient to be usable by many individuals who are confined to a wheelchair.
- C = Significant modification - At least one unit has been modified to allow use by most individuals who are confined to a wheelchair.

Reservations (Camping, Picnicking, Group):

- H = Non-reservation area.
- J = Reservation accepted/recommended.
- K = Reservation required.
- L = One or more units reserved until 6 pm for handicapped use.

Type of Facilities Available (Camping):

- T = Tents
- U = Trailers

Special Features Located Within One Mile of the Site:

- 1 = Fishing
- 2 = River or stream
- 3 = Reservoir or lake (powerboats permitted)
- 4 = Reservoir or lake (no powerboats)
- 5 = Boat ramp
- 6 = Boat rental
- 7 = Floating, rafting, kayaking
- 8 = Swimming
- 9 = Marina
- 10 = Store
- 11 = Resort
- 12 = Restaurant
- 13 = Museum
- 14 = Cave
- 15 = Ghost town
- 16 = Canyon
- 17 = Trailhead
- 18 = Historic trail
- 19 = Nature trail
- 20 = Accessible by trail or boat only
- 21 = Wilderness access
- 22 = Waterfalls
- 23 = Geological area
- 24 = Handicapped facilities
- 25 = Evening program
- 26 = Scenic drive
- 27 = Timbered setting
- 28 = Open setting



SAWTOOTH NATIONAL FOREST

Recreation Site Information

Location	Name	Elevation in Feet	Season of Use	Camping	Picnicking	Group	Drinking Water	Toilet	Holding Tank Disposal	Visitor Information	Number of Units	Special Features	Map Location
1	TRAP CREEK	6675	Jun-Sep	F,A,J,T,U	A,H	A,J	A	A			3	1,2,27	A1
2	SHEEP TRAIL	6550	Jun-Sep	F,A,J,T,U	A,H	A,J	A	A			4	1,2,27	A1
3	ELK CREEK	6675	Jun-Sep	F,A,J,T,U	A,H	A,J	A	A			3	1,2,27	A1
4	STANLEY LAKE	6500	May-Oct	F,B,J,T,U	B,H		A	C	*		39	1,2,3,5,7,8,17,21,22,26,27 *	A1
5	IRON CREEK	6700	May-Oct	F,A,H,T,U	A,H		A	C			9	1,2,17,21,27	A1
6	GRANDJEAN	5100	May-Oct	F,A,H,T,U	A,H		A	A	*		31	1,2,17,21,26,27, horse facilities, hot spr	A1
7	SALMON RIVER	6100	May-Sep	F,A,H,T,U			A	A	*		30	1,2,7,26,27, grocery, cafe - 5 miles	A2
8	RIVERSIDE	6100	Jun-Sep	F,A,H,T,U		F,A,J,T,U	A	A			17	1,2,7,26,27	A2
9	MORMON BEND	6100	May-Oct	F,A,H,T,U			A	C	*		15	1,2,5,7,26,27	A2
10	LOWER/UPPER O'BRIEN	6000	May-Oct	F,A,H,T,U			A	C			19	1,2,7,26,27	A2
11	WHISKEY FLATS	5700	May-Oct	A,H,T,U				B			4	1,2,7,26,28	A3
12	HOLMAN CREEK	5600	May-Oct	F,A,H,T,U			A	A			10	1,2,7,26,27	A3
13	SUNNY GULCH	6500	May-Oct	F,C,H,T,U	B,H		B	C	*		45	1,2,7,24,26,27	A2
14	REDFISH LAKE	6500	May-Oct	F,C,J,T,U	C,J	F,C,J	B	C	*		165	1,2,3,5,6,7,8,9,10,11,12,17, 19,20,21,24,25,26,27 **	A2
15	PETIT LAKE	7000	May-Oct	F,B,H,T,U	B,H		B	B	*		13	1,2,3,5,8,17,21,26,27	B2
16	ALTURAS LAKE	7000	May-Oct	F,B,J,T,U	B,J	F,B,J	B	B	*		56	1,2,3,5,7,8,17,21,26,27 ***	B2
17	CHEMEKETAN	7500	May-Oct	F,A,H,T,U	A,H	F,A,J,T,U	B	B			19	1,2,17,26,27	C2
18	EASLEY/BOULDER VIEW	6600	Jun-Sep	F,B,J,T,U		F,B,J,T,U	B	B	*		20	1,2,8,10,17,26,27, lifeguard	C3
19	WOOD RIVER	6300	May-Oct	F,B,H,T,U	B,J		B	B	*		30	1,2,17,19,26,27, amphitheater	C3
20	NORTH FORK	6200	May-Oct	F,B,H,T,U			B	B	*		28	1,2,17,26,27	C3
21	MURDOCK/CARIBOU	6500	May-Oct	F,B,H,T,U			B	B	*		18	1,2,17,26,27	C3
22	BOUNDARY	6000	May-Oct	F,B,H,T,U	B,H		B	B			6	1,2,10,11,12,13,17,28, laundry	C4
23	SAWMILL	5600	May-Oct	A,H,T,U	A,H		A				3	1,2,17	D4
24	FEDERAL GULCH	5700	May-Oct	A,H,T,U	A,H		C				9	1,2,17	D4
25	COPPER CREEK/GARFIELD	6400	May-Oct	A,H,T,U	A,H		C				8	1,2	D5
26	CHAPARRAL	4600	May-Sep	F,A,H,T,U	A,H		C				7	1,2,7	D1
27	ABBOTT	4600	May-Sep	F,A,H,T,U	A,H		C				7	1,2,7,27	D1
28	BIRD CREEK	4600	May-Sep	F,A,H,T,U	A,H		B				5	1,2,7,27	D1
29	WILLOW CREEK	4900	May-Sep	F,A,H,T,U	A,H		B				5	2,27	D1
30	WILLOW CREEK TRANSFER CAMP	5000	May-Sep	A,H,T,U	A,H		B				3	2,17,24,27, corral, hitching rack	D1
31	BEAR CREEK TRANSFER CAMP	6000	May-Sep	A,H,T,U	A,H		B				4	2,17,24,27, corral, hitching rack	D2
32	HUNTER CREEK	5500	May-Sep	A,H,T,U	A,H		B				4	2,17,24,28, corral, hitching rack	E1
33	BAUMGARTNER	5100	May-Sep	F,C,H,T,U	C,H		C	C			30	1,2,7,8,19,23,24,26,27, hot pool	D1
34	BOUNDS	5500	Jun-Sep	F,A,H,T,U	C,H		A	B			12	1,2,7,27	D2
35	CANYON	5500	May-Sep	F,A,H,T,U	A,H		A	B			6	1,2,16,17,28	D2
36	FIVE POINTS	5500	Jun-Sep	A,H,T,U	A,H		B				3	1,2,27	D2
38	PIONEER	6500	Jun-Sep	A,H,T,U	A,H	A,J	A	A			5	1,2, amphitheater	E2
39	SOLDIER MOUNTAIN SKI AREA	6500	Nov-Apr									12	E2
40	DEER CREEK	5500	May-Oct	A,H,T,U	A,H		C				5	1,2,17	D3
41	SCHIPPER	4600	May-Oct	A,H,T,U	A,H		A	B			7	1	F3
42	HARRINGTON FORK	5000	May-Oct	A,H	C,H		A	B			9	1,24	F3
43	LOWER/UPPER PENSTEMON	6400	Jun-Oct	F,B,J,T	B	F,A,J	B	B			12	1,24, winter sports, Dec to Mar	F3
45	BEAR GULCH	5200	May-Oct	C,F,H,T,U	C,H	C,J,T,U	C	C			13	24,28	F3
46	DIAMOND FIELD JACK	7000	Jun-Oct	A,H,T,U	A,H	J	B	A			8	1, winter sports, Dec to Mar	F3
47	BOSTETTER/FATHER & SONS	7100	Jun-Oct	F,A,H,T,U	A,H	H	A	A			37	1	F4
48	LAKE CLEVELAND	9000	Jun-Sep	F,A,H,T	A,H	H	B	B			8	1,4	F5
49	THOMPSON FLAT	8000	Jun-Oct	F,A,H,T,U	A,H	F,J	A	A			16	1,12	E6
51	SUBLETT	5500	Jun-Nov	A,H,T,U	A,H		A	A			7	1,5,8	G6
52	CLEAR CREEK	5300	Jun-Oct	C,H,T,U	C,H		B	C			14	1,2	I5
53	MILL FLAT	5500	Jun-Oct	A,H,T,U	A,H	J	A	B			7	1,28	G6
54	PORCUPINE SPRINGS	6950	Jun-Oct	C,J,T,U	C	C,J	C	C			18	17,26,27	F3
55	TWIN LAKES	8200	Jul-Oct	F,A,H,T,U	A,H		A				12	corral	E5
56	BENNETT SPRINGS	7500	Jun-Oct	A,H,T,U	A,H		A				8		E5
57	INDEPENDENCE LAKES	8000	Jul-Oct	H,T,U	A,H		A				8	corral	F5
58	STEER BASIN	5500	Jun-Oct	H,T,U			A				6		F3
59	BIRCH GLEN	5000	Jun-Oct	H,T,U			A				4		F3
60	HOWELL CANYON	7000	Jun-Oct	H,T,U			A				4	winter sports	E5
62	PETTIT	7000	Jun-Oct	F,A,T,U			A				12	19	E5

* Stanley Lake offers three campgrounds, a boat launch, day-use beach, and an interpretive day-use scenic overlook along the lakeshore. Cross-country skiing and snowmobiling are available Dec-Apr.

** Redfish and Little Redfish Lakes offer eight campgrounds (one boat or hike-in only), three day-use picnic areas and beaches, a boat launch, visitor center, amphitheatre, and full service lodge. Sail boating and water skiing are popular. Cross-country skiing and snowmobiling are available Dec-Apr. Group reservations are available at Northshore Picnic Area for day-use purposes only.

*** Alturas Lake offers three campgrounds, a boat launch, two reservable day-use picnic areas, a nonreservable day-use picnic area, a large beach and swimming areas. Cross-country skiing and snowmobiling are available Dec-Apr. A store, gas station, RV dump station, and restaurant are located approximately six miles away at Smiley Creek.



KEY TO RECREATION SITE INFORMATION

Fees (Camping, Picnicking and Group):
F = Fee Charged

Modification of Facilities to Assist Users With Physical Impairments:

- A = Facilities not modified.
- B = Limited modification - At least one unit has been modified, but modification may not be sufficient to be usable by many individuals who are confined to a wheelchair.
- C = Significant modification - At least one unit has been modified to allow use by most individuals who are confined to a wheelchair.

Reservations (Camping, Picnicking, Group):

- H = Non-reservation area.
- J = Reservation accepted/recommended.
- K = Reservation required.
- L = One or more units reserved until 6 pm for handicapped use.

Type of Facilities Available (Camping):

- T = Tents
- U = Trailers

Special Features Located Within One Mile of the Site:

- 1 = Fishing
- 2 = River or stream
- 3 = Reservoir or lake (powerboats permitted)
- 4 = Reservoir or lake (no powerboats)
- 5 = Boat ramp
- 6 = Boat rental
- 7 = Floating, rafting, kayaking
- 8 = Swimming
- 9 = Marina
- 10 = Store
- 11 = Resort
- 12 = Restaurant
- 13 = Museum
- 14 = Cave
- 15 = Ghost town
- 16 = Canyon
- 17 = Trailhead
- 18 = Historic trail
- 19 = Nature trail
- 20 = Accessible by trail or boat only
- 21 = Wilderness access
- 22 = Waterfalls
- 23 = Geological area
- 24 = Handicapped facilities
- 25 = Evening program
- 26 = Scenic drive
- 27 = Timbered setting
- 28 = Open setting

FOR MORE INFORMATION

If you would like more information or detailed maps of the Sawtooth National Forest, please contact one of the following:

FOREST SUPERVISOR
Sawtooth National Forest
2647 Kimberly Road East
Twin Falls ID 83301-7976
(208) 737-3200

Sawtooth National Recreation Area
8 mi. north of Ketchum on Highway 75
HC 64 Box 8291
Ketchum ID 83340
(208) 727-5013

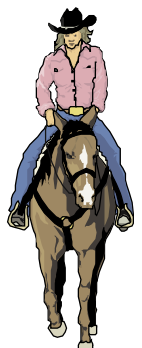
Stanley Office (SNRA)
HC 64 Box 9900
Stanley ID 83278
(208) 774-3000

Minidoka Ranger District
3650 South Overland Avenue
Burley ID 83318-3242
(208) 678-0430

Fairfield Ranger District
102 First Street East
PO Box 189
Fairfield ID 83327
(208) 764-3202

Ketchum Ranger District
206 Sun Valley Road
PO Box 2356
Ketchum ID 83340
(208) 622-5371

Sawtooth National Forest web site:
www.fs.fed.us/r4/sawtooth



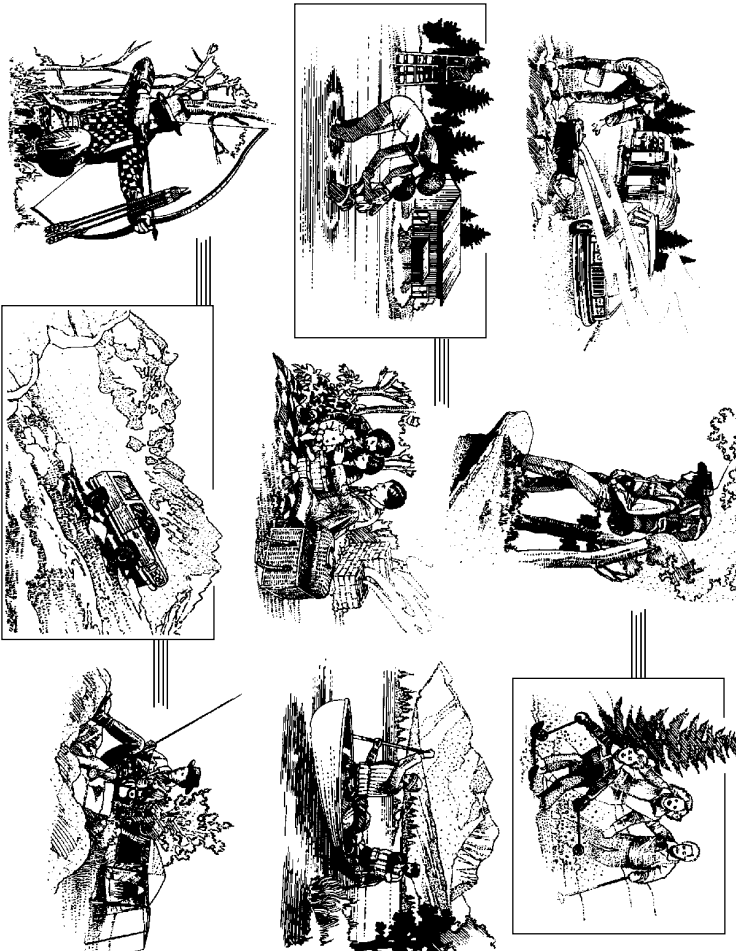
UNITED STATES DEPARTMENT OF AGRICULTURE
FOREST SERVICE
FEDERAL OFFICE BUILDING
324 25TH STREET
OGDEN, UTAH 84401

TO:

23.121.400.05/90
Revised/Reprint 2004

United States
Department of
Agriculture
Forest
Service
Intermountain
Region
Ogden, Utah

Camping and Picnicking on the National Forests of Southern Idaho and Western Wyoming



THE NATIONAL FORESTS
America's
Great
Outdoors