



Hubble Space Telescope Servicing Mission 4 Space Telescope Imaging Spectrograph Repair

The Space Telescope Imaging Spectrograph (STIS) was installed on the Hubble Space Telescope during Servicing Mission 2 in 1997. STIS stopped functioning in August 2004 due to a power supply failure, and is currently in “safe mode” pending a repair attempt during Servicing Mission 4.

Instrument and Repair Overview

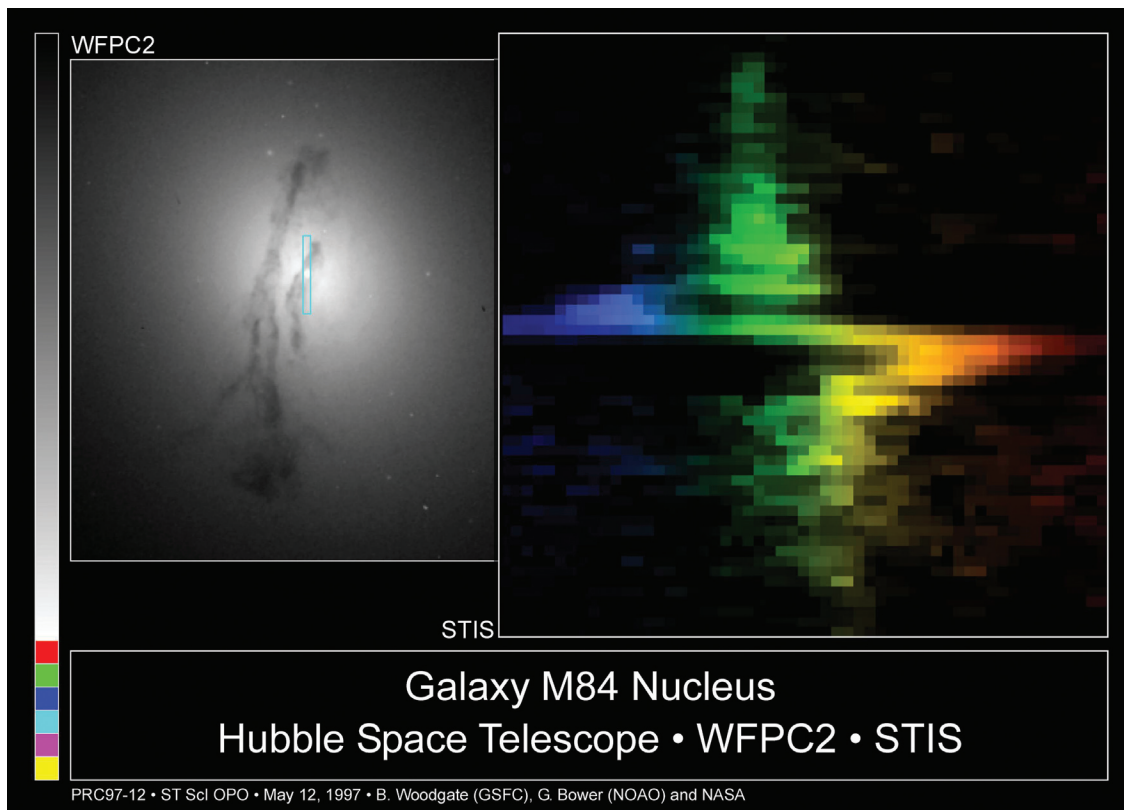
STIS is a highly versatile instrument with a proven track record. Its main function is spectroscopy—the separation of light into its component colors (or wavelengths) to reveal information about the chemical content, temperature and motion of planets, comets, stars, interstellar gas and galaxies. A key feature of STIS is its ability to produce the spectrum of spatially extended objects, such as galaxies, covering many points across the image simultaneously. This is why it is called an “imaging spectrograph.” The instrument is sensitive to a wide range of wavelengths of light, spanning from the vacuum ultraviolet through the optical to the near infrared. Although spectrographs generally do not produce beautiful images like Hubble’s cameras,

the data they provide are absolutely essential to understanding the physical properties of the material universe – they put the “physics” in astrophysics. At the time when operations suspended in August of 2004, STIS science constituted about 30% of the Hubble observing program.

To repair STIS, astronauts will perform a spacewalk to replace a low voltage power supply board which contains a failed power converter. The repair is straightforward but requires diligence, and Hubble engineers have designed special tools for the job. If successful, the repair effort will restore one of two fully redundant electronic chains (or “sides”) of the instrument. Both were unusable after August, 2004.

The basics of the task are these - after installing a “fastener capture plate” over the top of a STIS electronics access panel, astronauts will use a power tool to remove the 111 fasteners (screws) that attach the panel to STIS. The plate will ensure that the small fasteners are captured without astronauts having to grasp and stash them with gloved hands.

NASAfacts



STIS spectrum on right reveals rapid star motions at galaxy center, indicative of a supermassive black hole.

After removing the panel (with capture plate and fasteners attached), the astronauts will remove the failed power supply card and click in the new one, much like replacing a circuit board on a computer. A new, simplified panel will then be installed over the open electronics cavity—only this time 111 fasteners will not be required. By throwing only two levers, the astronauts will latch the new panel securely into place.

The Instrument

STIS has three detectors, each with 1024x1024 pixels. There's a CCD (Charge Coupled Device) for detecting optical and near-infrared light, and two MAMA (Multi-Anode Microchannel Array) detectors for detecting near- (lower energy) and far- (higher energy) ultraviolet light. A limited filter set supports imaging, but STIS's heart is spectroscopy, which is enabled by a diverse set of gratings ahead of the detectors in the optical chain.

Gratings, like the more familiar prisms, create a spectrum by separating light into its individual wavelength components. Close examination of the amount of light at each wavelength reveals the presence of absorption and emission lines, which are the "fingerprints" of the chemical composition and physical and dynamical states of stars and gas. The astronomer has a wide choice of gratings according to her/his needs for wavelength coverage and spectral resolution.

A unique feature of STIS is that by having light enter a long, narrow slit before reaching the gratings, a separate spectrum can be recorded simultaneously along each of the 1024 "pixel rows" of the detector. By orienting the long slit, for example, across the nucleus of a galaxy, one can efficiently measure how fast the galaxy is rotating at different distances away from its center.

In many respects STIS complements the new Cosmic Origins Spectrograph (COS) to be mounted on Hubble during SM4. COS was designed with one primary purpose, to easily measure exceedingly faint levels of ultraviolet light emanating from very faint cosmic point sources, e.g. faint stars in our own galaxy and quasars far out across the universe. A repaired STIS will efficiently provide spatially resolved spectra of extended objects, spectra at visible and near-infrared wavelengths, very high (sharply defined) spectral resolution and measurements of the way some spectra vary with time – capabilities for which COS was not designed.

Scientific Future of STIS

Although it performed brilliantly for 7.5 years before suspending operations in 2004, the scientific potential of STIS is far from exhausted. Working side by side, the COS-STIS tandem will offer a full set of spectro-scopic tools for the astronomer. Each instrument partly backs up the other; each offers something the other doesn't. Some glimpses into STIS's scientific past offer a glimpse of future endeavors:

- **Black Holes** — The light emitted by stars and gas orbiting around a black hole appears redder when moving away from us (redshift), and bluer when coming toward us (blueshift). By looking for this telltale Doppler shift, STIS has uncovered and weighed several dozen supermassive black holes at the cores of galaxies, but there is still much work to be done. To nail down the relationship between black hole mass and the properties of the host galaxies, more observations of both high- and low-mass black holes are needed.
- **Galaxies** — STIS can simultaneously record the spectra of up to 50 spatially distinct locations within an extended object such as a galaxy. This is a crucial tool for the efficient mapping of a complex environment. As an example, long-slit STIS spectra of young star clusters in the merging "Antennae Galaxies" revealed their ages, chemical compositions and velocities, and the slit was crucial for subtraction of the "sky background." More STIS observations of such merging galaxies are important to our understanding of what happens to galaxies when they collide with each other.
- **Stars** — At the time it ceased operating, STIS was being used in a continuing survey of the gas and dust blown off by the highly unstable, massive binary star, eta Carinae, which is located in our own galactic neighborhood, about 8000 light years from the sun. Astronomers expect that someday, perhaps a few thousand years from now, eta Carinae may explode as a supernova. STIS provides a unique opportunity to probe the details of the final stages of life of such a star before its cataclysmic death-
- **Planets Around Other Stars** — STIS spectra of the transiting star-planet system HD209458 resulted in transit light curves so precise that starlight absorption by the planet's atmosphere was detected, allowing the identification of several planetary atmospheric constituents, including hydrogen, oxygen and sodium—a first. More examples of bright transiting systems are now known and available for study with a repaired STIS, and the promise of yet more systems being discovered is high.

The STIS Team: NASA Goddard Space Flight Center led the original STIS development and is leading the repair effort. The principal investigator is Dr. Bruce E. Woodgate of NASA Goddard, and Ball Aerospace Systems Group is the prime contractor. The Space Telescope Science Institute in Baltimore, Md., manages STIS.

For more information contact:

Susan Hendrix,
Office of Public Affairs.
301-286-7745

Or visit the Hubble website at:
www.nasa.gov/hubble

National Aeronautics and Space Administration

Goddard Space Flight Center
8800 Greenbelt Road
Greenbelt, MD 20771

www.nasa.gov

NASA Facts