

Utah, 2006

Primary and secondary syphilis

- **CASES:** Utah reported 21 cases in 2006.
- **RATES:** Utah ranked 42 among 50 states, DC, and 3 territories with 0.9 cases per 100,000 population compared to the total rate of 3.3 cases per 100,000 population.

Rates of primary and secondary syphilis, by sex

- In Utah, the rate among males was 1.5 per 100,000 population compared to the total male rate of 5.7 per 100,000.
- The rate among females was 0.2 per 100,000 compared to the total female rate of 1.0 per 100,000.

Rates of primary and secondary syphilis, by race/ethnicity

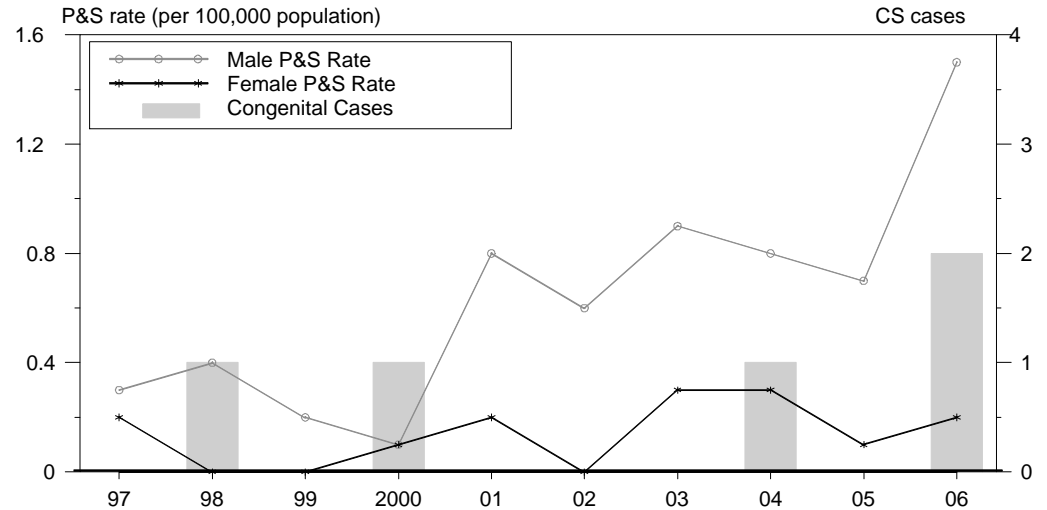
In Utah, the race/ethnicity adjusted rates per 100,000 population were 0.6 among whites, 4.1 among blacks, 1.9 among Hispanics, 3.0 among Asian/Pacific Islanders, and 0.0 among American Indians/Alaska Natives.

- The rate among blacks was 6.8 times that of whites.
- The rate among Hispanics was 3.2 times that of whites.
- The rate among Asian/Pacific Islanders was 5 times that of whites.

Congenital syphilis

- **CASES:** Utah reported 2 cases in 2006.
- **RATES:** Utah ranked 20 among 26 states, DC, and 1 territory reporting congenital syphilis cases with a rate of 3.9 cases per 100,000 live births compared to the total rate of 8.7 cases per 100,000.

Syphilis: P&S Rates and Congenital Cases, Utah, 1997-2006



Total P&S Syphilis Rates by County, Utah, 2006

