

Nebraska, 2006

Primary and secondary syphilis

- **CASES:** Nebraska reported 7 cases in 2006.
- **RATES:** Nebraska ranked 50 among 50 states, DC, and 3 territories with 0.4 cases per 100,000 population compared to the total rate of 3.3 cases per 100,000 population.

Rates of primary and secondary syphilis, by sex

- In Nebraska, the rate among males was 0.7 per 100,000 population compared to the total male rate of 5.7 per 100,000.
- The rate among females was 0.1 per 100,000 compared to the total female rate of 1.0 per 100,000.

Rates of primary and secondary syphilis, by race/ethnicity

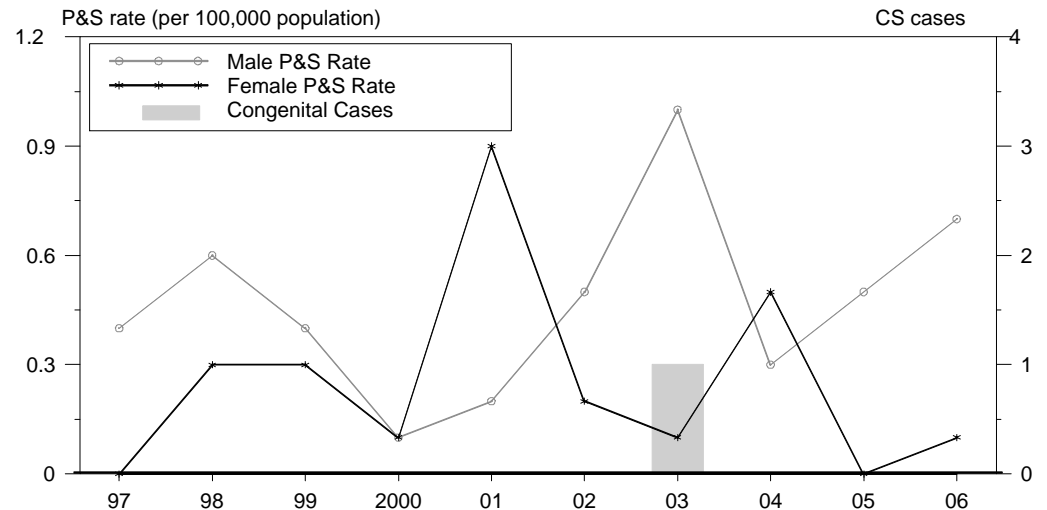
In Nebraska, the race/ethnicity adjusted rates per 100,000 population were 0.3 among whites, 1.3 among blacks, 0.8 among Hispanics, 0.0 among Asian/Pacific Islanders, and 0.0 among American Indians/Alaska Natives.

- The rate among blacks was 4.3 times that of whites.
- The rate among Hispanics was 2.7 times that of whites.

Congenital syphilis

- **CASES:** Nebraska reported 0 cases in 2006.
- **RATES:** Nebraska had a rate of 0.0 cases per 100,000 live births compared to the total rate of 8.7 cases per 100,000.

Syphilis: P&S Rates and Congenital Cases, Nebraska, 1997-2006



Total P&S Syphilis Rates by County, Nebraska, 2006

