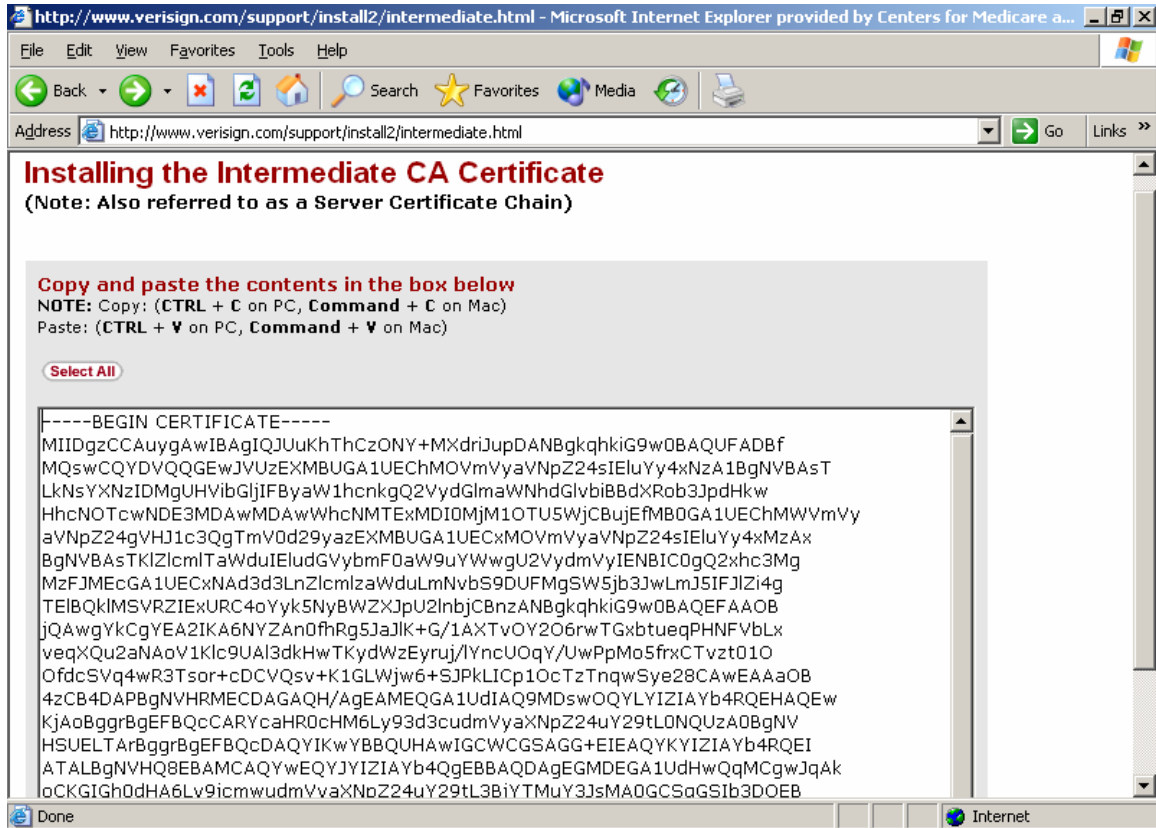


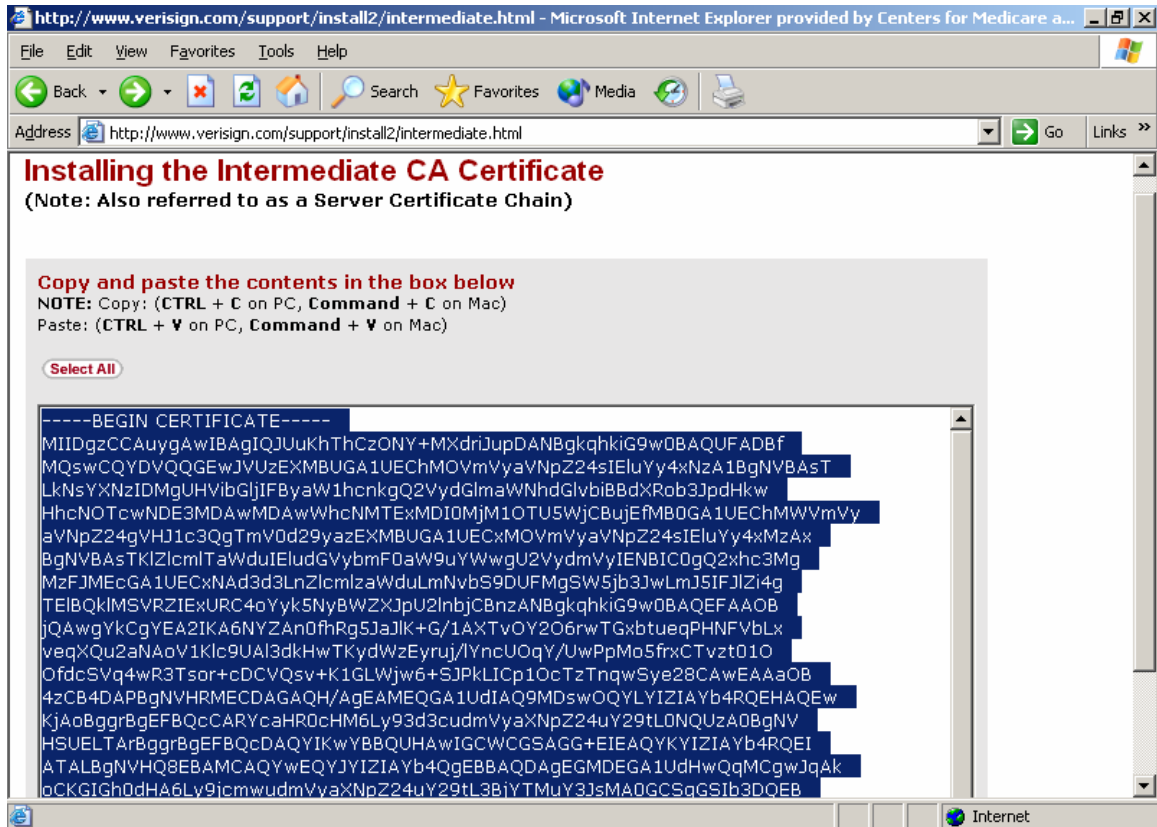
If you encounter the screen below when trying to access “CMS Enterprise File Transfer,” follow the steps below.



1. Type the following URL into your browser:
<http://www.verisign.com/support/install2/intermediate.html>
2. Select the text on the page that opens by clicking the “Select All” button.

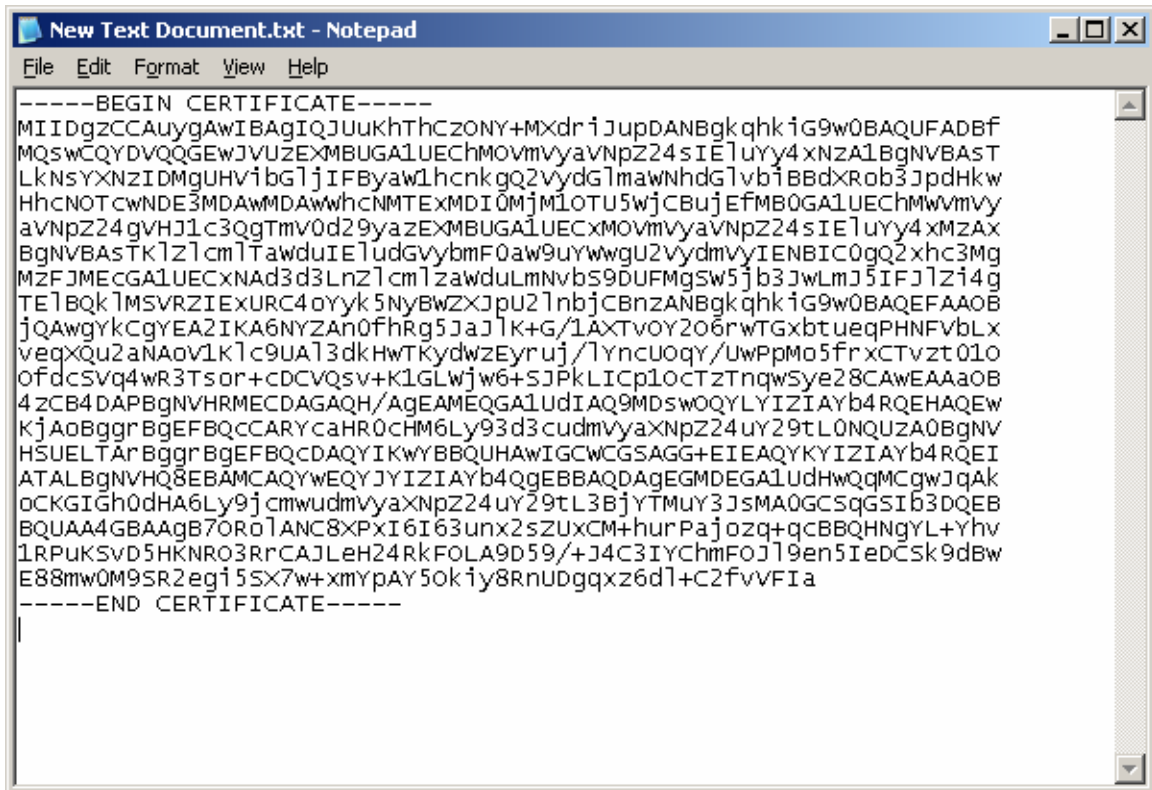


3. Press the <Ctrl> + C key combination or right click on the highlighted text and click copy to copy the selected text to the clipboard.

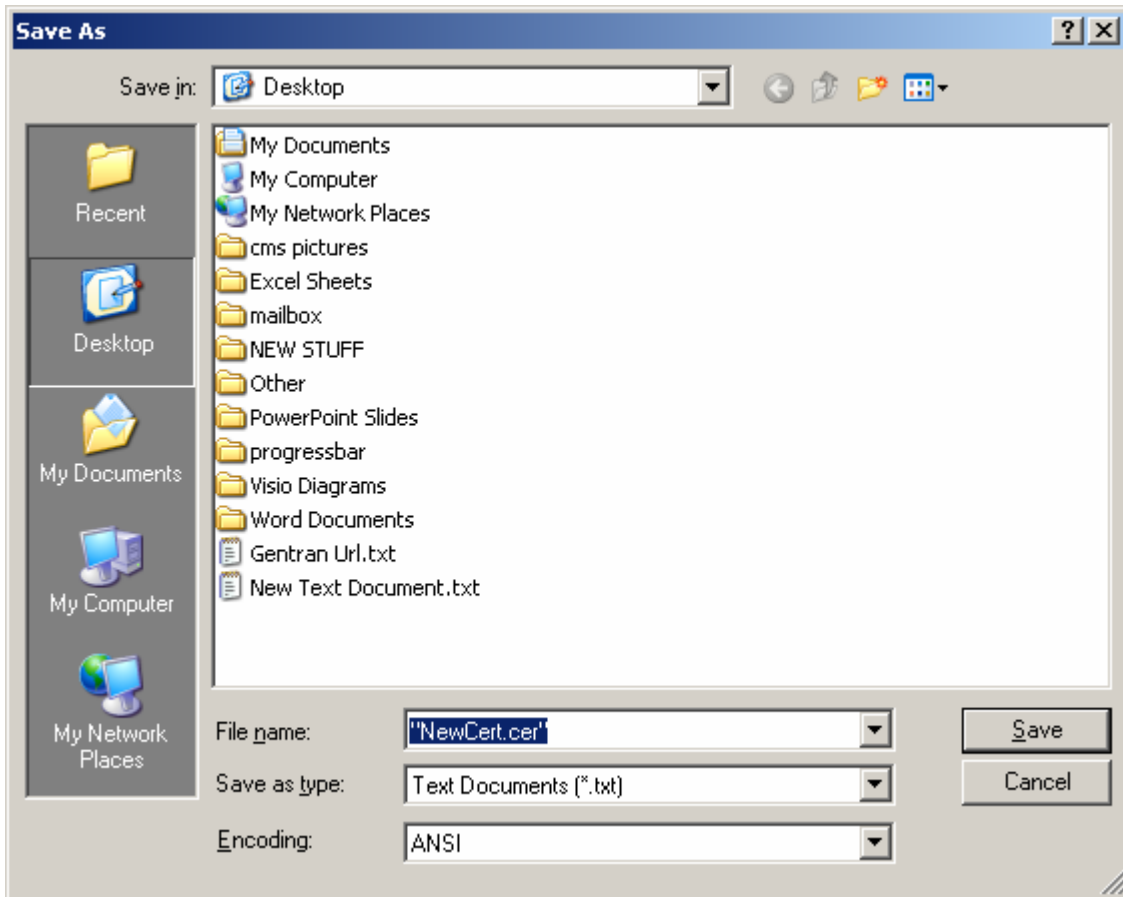


4. Close your browser window, and go to your desktop. Right click on the desktop and move your mouse down to the menu item that says “New”. From the menu that pops up, click the “Text Document” option.

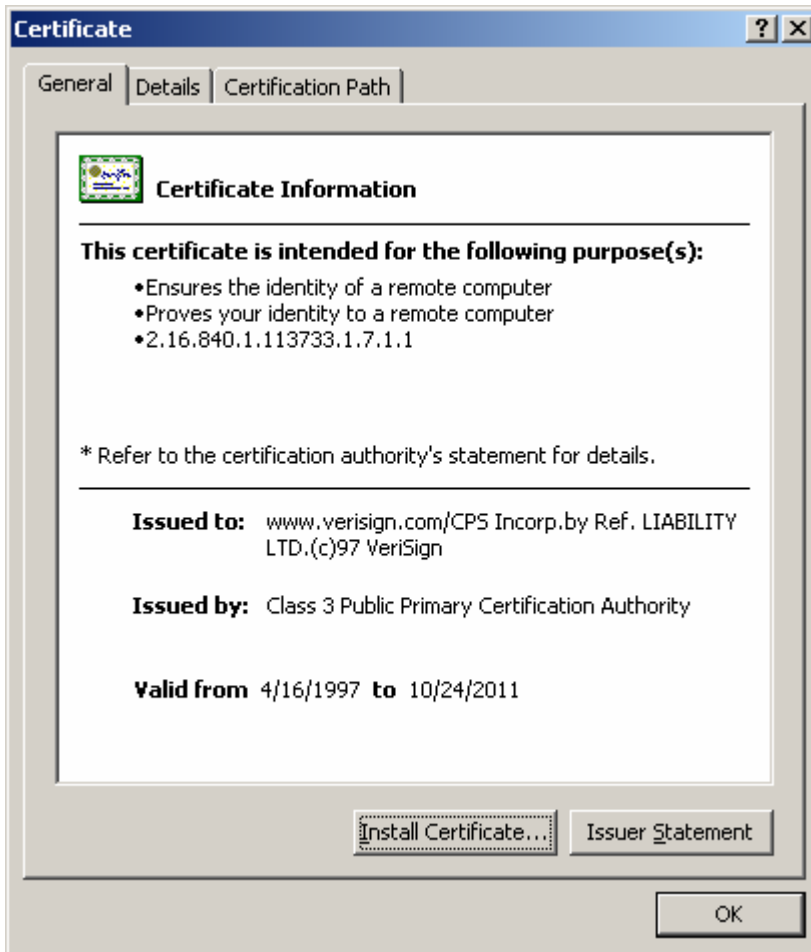
5. Double click on the icon that you just created on the desktop called “New Text Document” to open it. Go to the “edit” menu and click on the paste option, to paste the text from the clipboard.



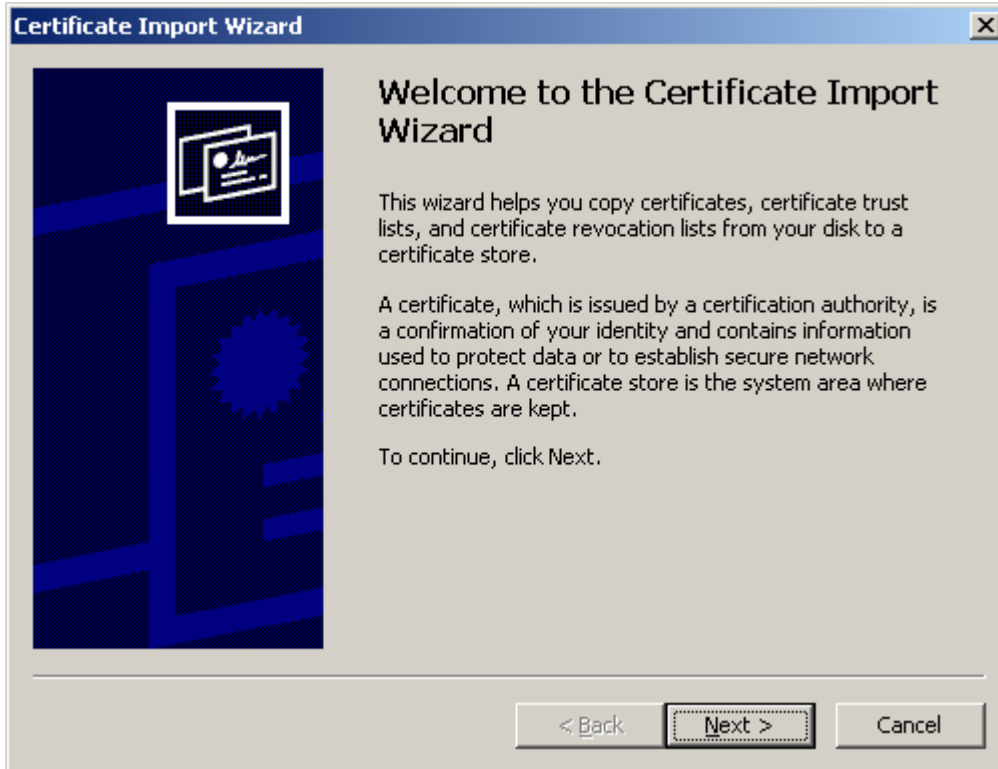
6. Go to the “File” menu and click “Save As...” to bring up the “Save As” dialog window. Save the document as “NewCert.cer” (including the quotation marks) and click the save button.



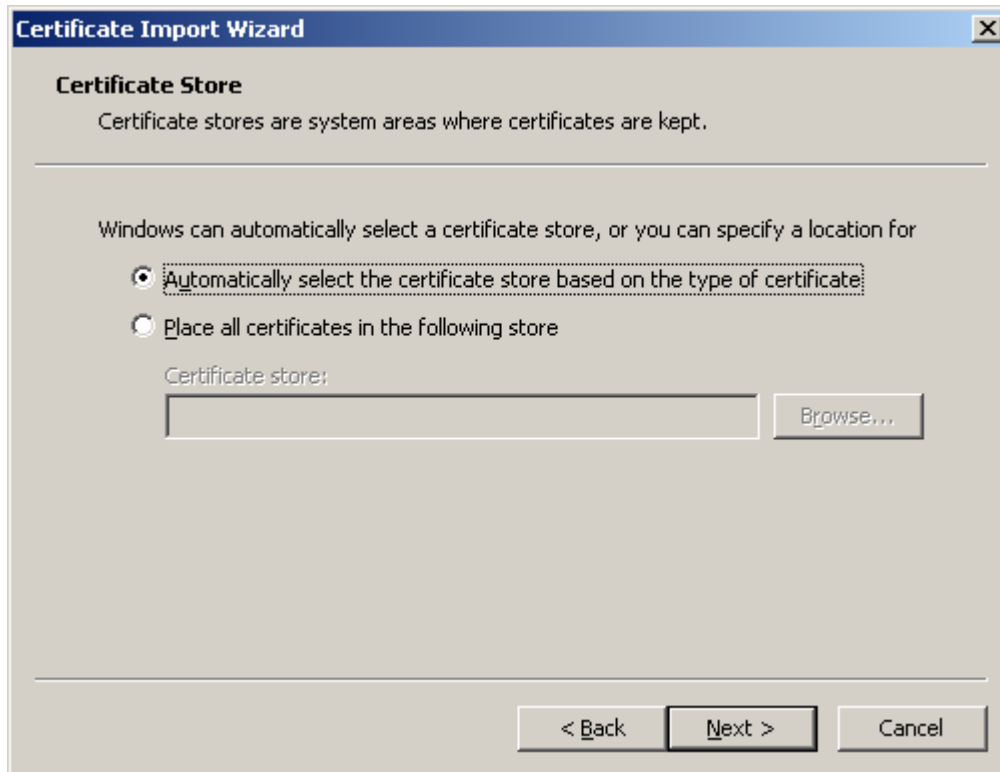
7. Close the text document, and double click on the new icon on the desktop named “NewCert.cer”. On the screen that appears, click on the “Install Certificate...” button at the bottom.



8. Click on the “Next” button on the “Certificate Import Wizard” dialog that pops-up.



9. Click “Next” to accept the default option “Automatically select the certificate store based on the type of certificate” on the “Certificate Store” dialog.



10. Click the “Finish” button to complete the import of the certificate.

