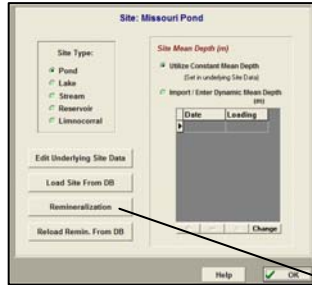
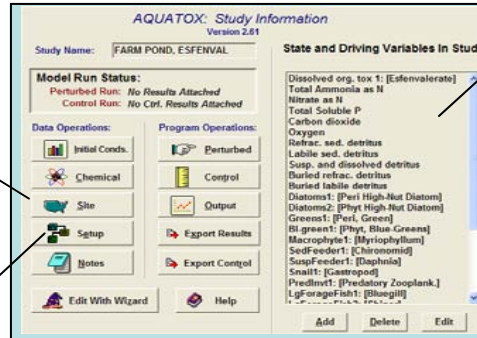


Flowchart of AQUATOX Interface

Site Characteristics



AQUATOX Main Screen

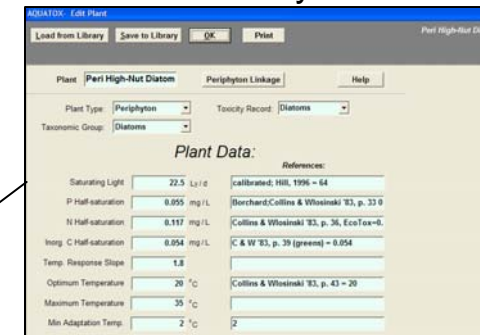


Double-Click on Chemicals, Nutrients, Detritus, Plants, Animals to get to: AQUATOX Loadings



Chemicals, Plants, and Animals "Edit Underlying Data"

Parameters Entry Screen



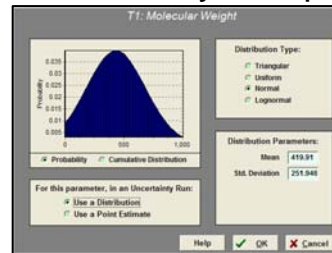
Study Setup



Site Characteristics, Remin

Control Run Options

Uncertainty Setup



Rates Setup

Site Only: Stream Data

Animals Only: Trophic Interactions

Chemicals Only: Toxicity Data