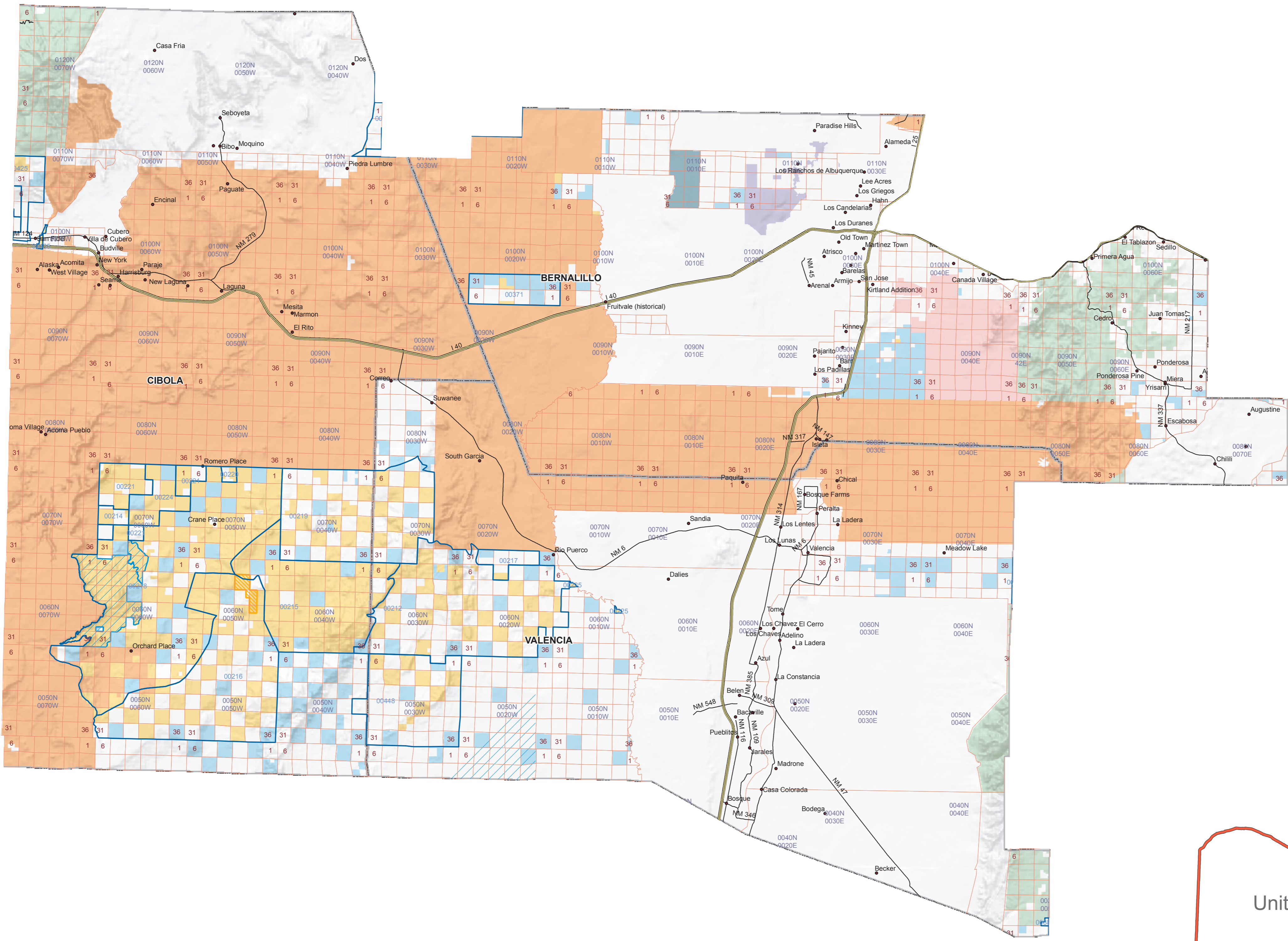


Unit Two



- Communities
- Interstate
- NM
- US
- - - CDNST
- Allotments
- ▨ NCA
- ▨ ACEC
- ▨ WSA
- ▨ National Monument
- ▨ Wilderness
- Counties

- Bureau of Land Management
- Bureau of Reclamation
- Dept. of Agriculture
- Dept. of Defense
- Dept. of Energy
- Forest Service
- Fish & Wildlife Service
- Tribal
- National Park Service
- Private
- State
- State Game & Fish
- State Park
- Valles Caldera National Preserve

1:250,000

