

Smart Growth and Green Infrastructure

Wednesday, November 28, 2007 Two-hour audio Web broadcast

Eastern: 1:00 p.m.–3:00 p.m.

Central: 12:00 p.m.–2:00 p.m.

Mountain: 11:00 a.m.–1:00 p.m.

Pacific: 10:00 a.m.–12:00 p.m.

A Watershed Academy Webcast:

As we celebrate the 35th anniversary of the Clean Water Act, we still have considerable distance to travel toward achieving its goals. Increasingly, the challenges involve how and where communities grow—and how best to address the impacts of land use and development on water resources. Three practitioners in this Webcast will discuss how various Smart Growth and Green Infrastructure tools are being used at the regional, watershed and site levels to preserve, enhance, and protect our water resources. Our speakers will also discuss various approaches, including messaging, research, and partnering to ensure that these tools are successfully implemented.

Instructors:

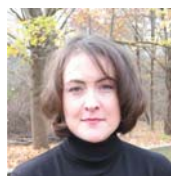


Geoffrey Anderson, Director, USEPA's Development, Community, and Environment Division

Geoff's division at the EPA is responsible for the Agency's smart growth work and coordinates the Smart Growth Network. The Network is a broad partnership program which encourages development that serves the economy, community and environment. Geoff's work has included principal authorship of "Why Smart Growth: a primer," "Transportation and Environmental Impacts of Brownfields vs. Greenfields Development," and "Transportation and Environmental analysis of the Atlantic Steel Redevelopment," a major redevelopment in Atlanta, GA.

Nancy Stoner, Director, Natural Resources Defense Council's Clean Water Project

Nancy has been practicing law for 20 years. She has 15 years experience using the Clean Water Act to protect rivers, lakes, and coastal waters from contaminated stormwater, sewer overflows, agriculture, and other sources of water pollution. Nancy has been with NRDC since October 1999. From 1997 to 1999, she served as Director of OECA's Office of Planning and Policy Analysis. Prior to that, she was a trial attorney with the DOJ Environment & Natural Resources Division (ENRD). Nancy holds a J.D. from Yale University Law School and a B.A. from the University of Virginia.



Noelle Mackay, Executive Director, Smart Growth Vermont

Noelle joined Smart Growth Vermont in 2005. Previously, she was the Deputy Director of the Stony Brook-Millstone Watershed Association in New Jersey where she built partnerships between municipal officials and environmental advocates to improve the protection of water and related ecological resources. Noelle has worked with communities to develop open space, watershed and habitat protection plans. She has also worked with communities to implement bylaw and policy initiatives to protect water bodies, critical habitats and viewsheds.

The Watershed Academy

The Watershed Academy is a focal point in EPA's Office of Water for providing training and information on implementing watershed approaches. The Academy sponsors live classroom training and online distance learning modules through the Watershed Academy Web at www.epa.gov/watertrain. For more information, visit www.epa.gov/watershedacademy.

Registration

Registration for this Webcast opens November 7, 2007. You must register in advance to participate in the Webcast. To register, visit www.clu-in.org/live. The Webcast will be a Web-based slide presentation with a companion audio portion. There are two options for accessing the audio portion of the Webcast: by phone OR by streaming audio broadcast (not both). When registering, you will be able to select the audio option you prefer to accompany the Web-based slides. If you choose the streaming audio option, you will not be able to participate by telephone. However, you will be able to submit questions online for the presenters to answer during the Webcast. Closed-captioning is available. Upon registration, you will receive complete participation instructions. **Please note that there are a limited number of toll-free phone lines available, so register early to guarantee your spot. Because of the limited number of spaces, we strongly encourage you to reserve a conference room and invite your colleagues and other partners to participate.** If you register after that limit is reached, you will be added to a waiting list. After the Webcast is over, an audio version of the Webcast will be available—visit www.epa.gov/watershedwebcasts for more information.

Questions?

Visit www.clu-in.org/live or contact Helen Siverling at helen.siverling@tetrattech-ffx.com or 703-385-6000.

The materials in this Webcast have been reviewed by EPA staff for technical accuracy. However, the views of the speakers and the speaker's organization are their own and do not necessarily reflect those of EPA. Mention of any commercial enterprise, product, or publication does not mean that EPA endorses them.