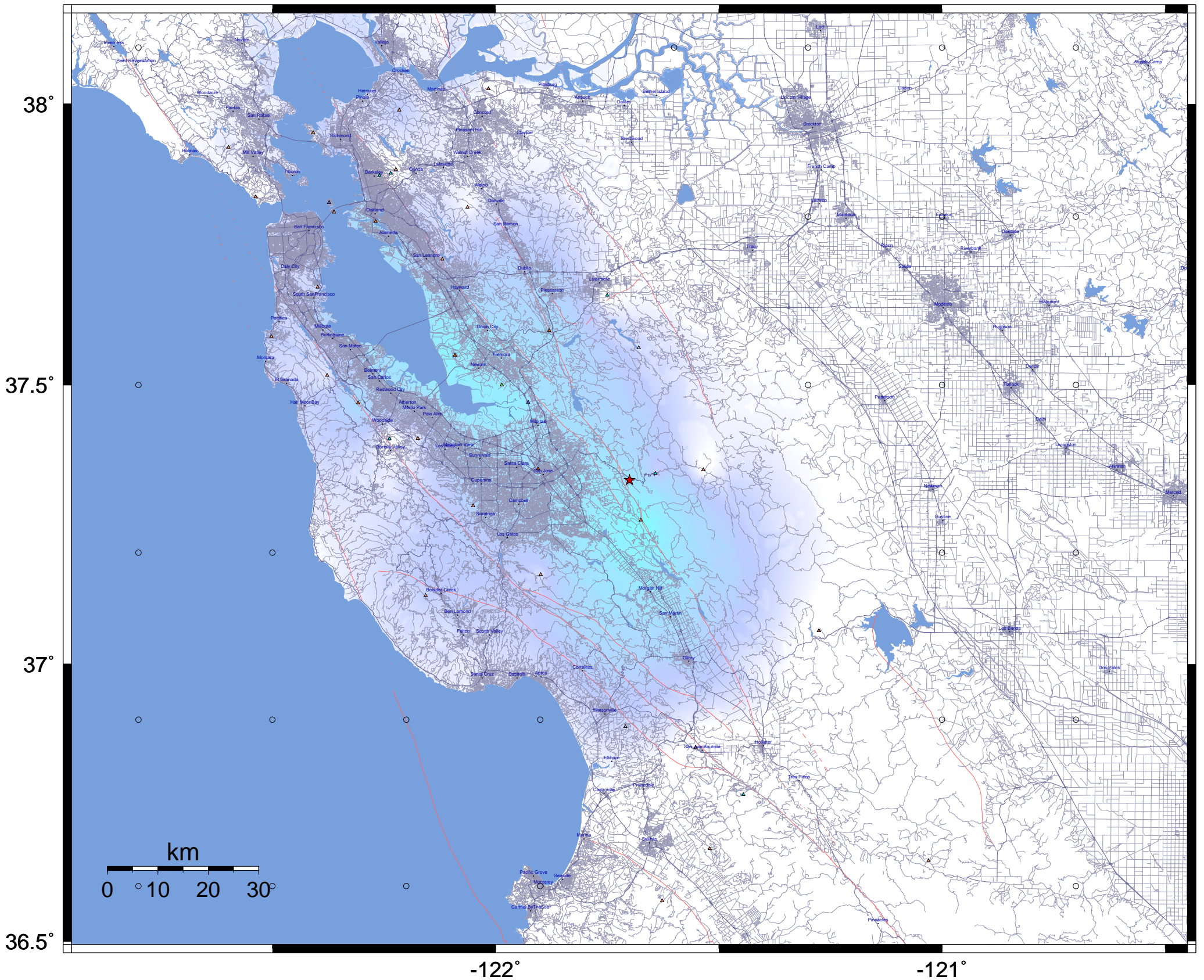


USGS/UCB/CDMG Rapid Instrumental Intensity Map for event: 51105698  
 Sun Feb 25, 2001 03:18:22 PM PST M 4.4 N37.33 W121.70 ID:51105698



PROCESSED: Wed Aug 1, 2001 11:06:40 AM PDT,

| PERCEIVED SHAKING      | Not felt | Weak    | Light   | Moderate   | Strong | Very strong | Severe         | Violent | Extreme    |
|------------------------|----------|---------|---------|------------|--------|-------------|----------------|---------|------------|
| POTENTIAL DAMAGE       | none     | none    | none    | Very light | Light  | Moderate    | Moderate/Heavy | Heavy   | Very Heavy |
| PEAK ACC.(%g)          | <.17     | .17-1.4 | 1.4-3.9 | 3.9-9.2    | 9.2-18 | 18-34       | 34-65          | 65-124  | >124       |
| PEAK VEL.(cm/s)        | <0.1     | 0.1-1.1 | 1.1-3.4 | 3.4-8.1    | 8.1-16 | 16-31       | 31-60          | 60-116  | >116       |
| INSTRUMENTAL INTENSITY | I        | II-III  | IV      | V          | VI     | VII         | VIII           | IX      | X+         |