

DEPARTMENT OF LABOR AND INDUSTRIAL RELATIONS

**News Release**

**LINDA LINGLE**  
GOVERNOR

NELSON B. BEFITEL, DIRECTOR  
COLLEEN Y. LaCLAIR, DEPUTY DIRECTOR  
Phone: (808) 586-8844  
Fax: (808) 586-9099

MR 2005 17

For Immediate Release: October 21, 2005

**HAWAII'S SEASONALLY ADJUSTED UNEMPLOYMENT RATE AT  
2.7 PERCENT IN SEPTEMBER STILL LOWEST IN THE NATION FOR  
SEVENTH CONSECUTIVE MONTH**

Hawaii's Unemployed Population Reduced by 20 Percent During  
Lingle-Aiona Administration as Economy adds 40,100 New Jobs

**HONOLULU-** The Hawaii State Department of Labor and Industrial Relations announced today that the seasonally adjusted unemployment rate for September was 2.7 percent. September also marked the seventh consecutive month in which Hawaii posted the lowest unemployment rate in the nation. The slight rise of 0.1 percent over August was due primarily to a reduction of casual hires at the Department of Education as a result of a shift in the public school calendar. Since March, Hawaii's seasonally adjusted unemployment rate has been under 3.0 percent. The national seasonally adjusted unemployment rate also rose slightly, going from 4.9 percent in August to 5.1 percent in September. One year ago, Hawaii's seasonally adjusted unemployment rate was 3.1 percent, while the U.S. seasonally adjusted unemployment rate was 5.4 percent.

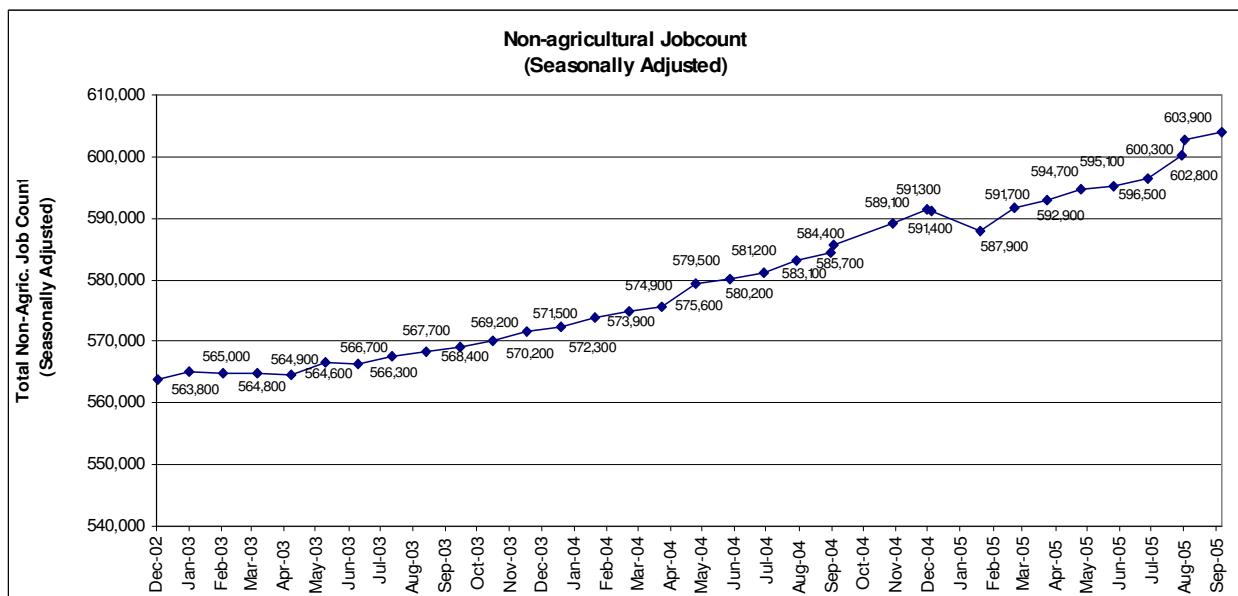
**UNEMPLOYMENT RATES- SEASONALLY ADJUSTED**

	<b>SEP 2005</b>	<b>AUG 2005</b>	<b>SEP 2004</b>
<b>STATE</b>	<b>2.7</b>	<b>2.6</b>	<b>3.1</b>
<b>U. S.</b>	<b>5.1</b>	<b>4.9</b>	<b>5.4</b>

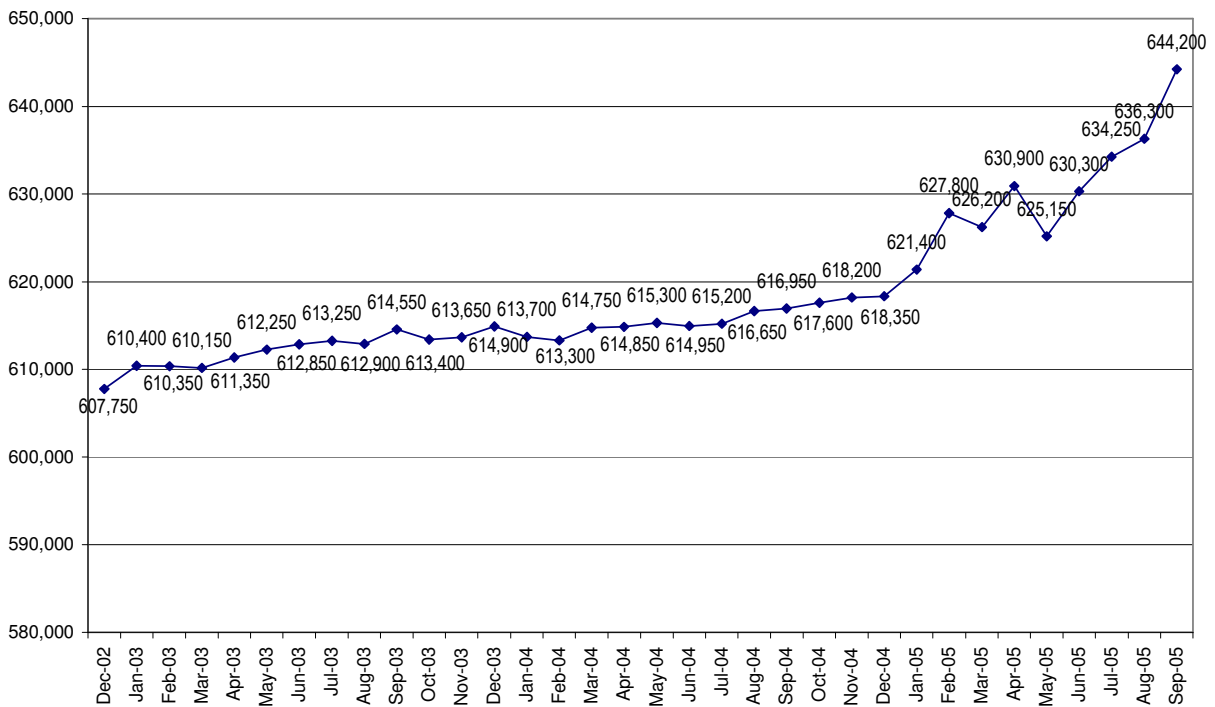
In September, Hawaii's seasonally adjusted labor force totaled 644,200 and was composed of 626,700 persons employed and 17,500 unemployed. Since September 2004, the seasonally adjusted labor force has risen by 27,250, or 4.4 percent, while the number of persons considered employed has expanded at a higher rate, growing by 29,150, or 4.9 percent. In contrast, the number of seasonally adjusted unemployed has declined by 1,900, or 9.7 percent, over-the-year.

	<u>Sep</u> <u>2005</u>	<u>Aug</u> <u>2005</u>	<u>Sep</u> <u>2004</u>
Labor Force	644,200	636,300	616,950
Employment	626,700	619,600	597,550
Unemployment	17,500	16,700	19,350

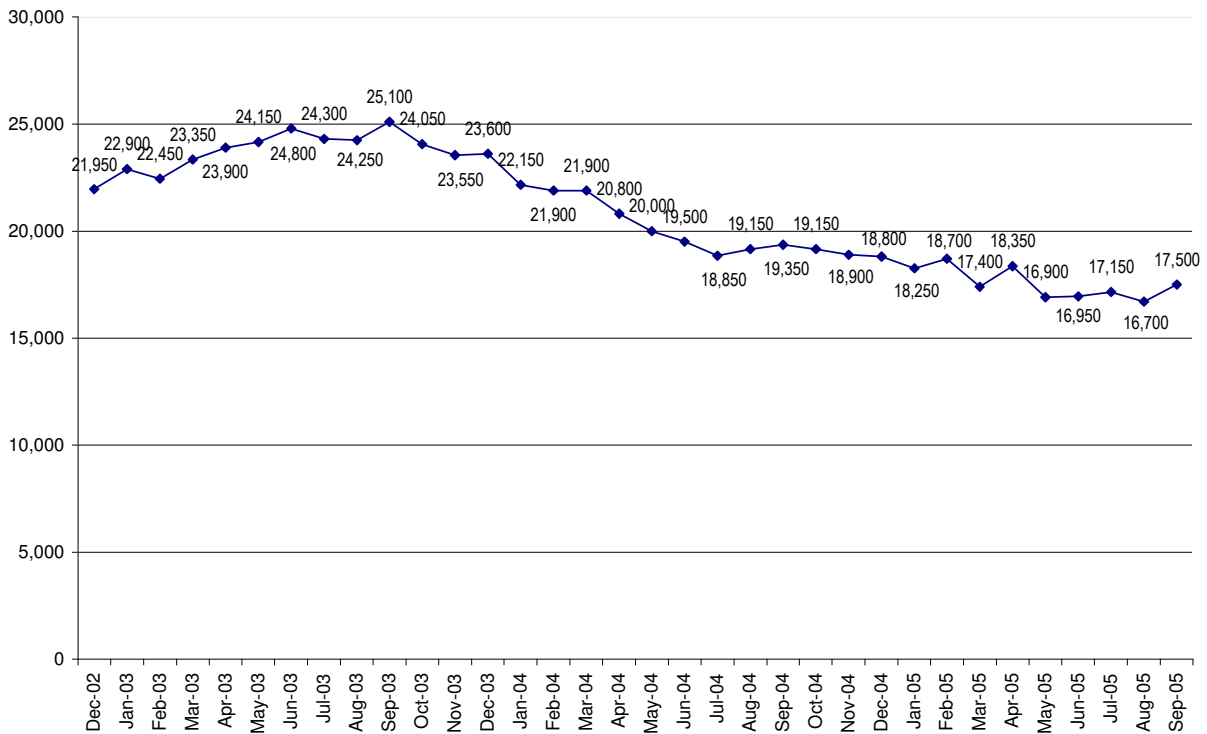
Since December 2002, the seasonally adjusted labor force has risen by 36,450 or 6.0 percent, while the number of seasonally adjusted new jobs has expanded by 40,100, or 7.1 percent. In contrast, Hawaii's unemployed population has declined by 4,450, or 20.3 percent, during the Lingle-Aiona Administration.



**HAWAII Seasonally Adjusted Labor Force Dec 2002 - Sep 2005**



**HAWAII Seasonally Adjusted Unemployed Dec 2002 - Sep 2005**



In a separate measure of employment, total nonagricultural jobs increased in September over August by 1,100 jobs, or 0.2 percent, to 603,900. Over-the-year, the seasonally adjusted jobcount has expanded by 18,200, or 3.1 percent. Over-the-month, notable private sector job gains were experienced in Education & Health Services (+700), with the bulk of the increase concentrated in private education, and in Trade, Transportation, & Utilities (+500), in part due to continual cruise ship hiring. Construction (+300), Leisure & Hospitality (+200), and Manufacturing (+100) also experienced job growth in September over August. Government employment declined by 800, primarily due to shifting in the public school calendars that resulted in the reduction of casual workers . The only other over-the-month decline occurred in Other Services, which dipped slightly by 100 jobs.

"It's exciting to see Hawaii sustaining a healthy, vibrant economy and a low unemployment rate. Hawaii's employers have been able to generate 40,100 new jobs during the first three years of the Lingle-Aiona administration which has helped the state's labor force thrive," said Colleen LaClair, Deputy Director of Labor and Industrial Relations.

**Unemployment Trust Fund**

To keep the public informed on the status of the state's Unemployment Compensation Fund (Fund), from which unemployment benefits are paid to qualified claimants, the following is the current status of the Fund and its projected status at the end of the year.

Fund Balance as of end of September 2005:	\$434,891,074
Taxes received year-to-date through end of September:	\$99,653,833
Interest received year-to-date through end of September:	\$11,032,482
Benefits paid year-to-date through end of September:	\$63,760,124
Current Tax Schedule:	Schedule "C"

Calendar year 2005 Fund and 2006 Tax Schedule projections, as of the end of September:

Fund Balance, end of 2005:	\$454,200,000 (projected)
Taxes for Calendar Year 2005:	\$127,400,000 (projected)
Interest for Calendar Year 2005:	\$22,500,000 (projected)
Benefits for Calendar Year 2005:	\$83,700,000 (projected)

Tax Schedule for Calendar Year 2006:

Schedule "C" (projected)

For comparison purposes, in calendar year 2004 the Fund collected \$124.6 million in taxes and paid out \$104.7 million in benefits.

**#####**

For more information, contact:

James P. Hardway

Assistant to the Director

Phone: (808) 586-8845

Fax: (808) 586-9099

Email: [jhardway@hawaii.gov](mailto:jhardway@hawaii.gov)

**UNEMPLOYMENT RATES- NOT SEASONALLY ADJUSTED**

**UNEMPLOYMENT RATES- SEASONALLY ADJUSTED**

	SEP 2005	AUG 2005	SEP 2004
<b>STATE</b>	<b>3.0</b>	<b>2.7</b>	<b>3.3</b>
HONOLULU	3.0	2.6	3.3
HAWAII COUNTY	3.4	3.4	3.8
KAUAI	2.8	2.5	3.4
MAUI COUNTY	2.9	2.6	3.0
Maui Island	2.7	2.4	2.6
Molokai	10.1	9.2	13.3
Lanai	1.2	0.7	4.9
<b>U. S.</b>	<b>4.8</b>	<b>4.9</b>	<b>5.1</b>

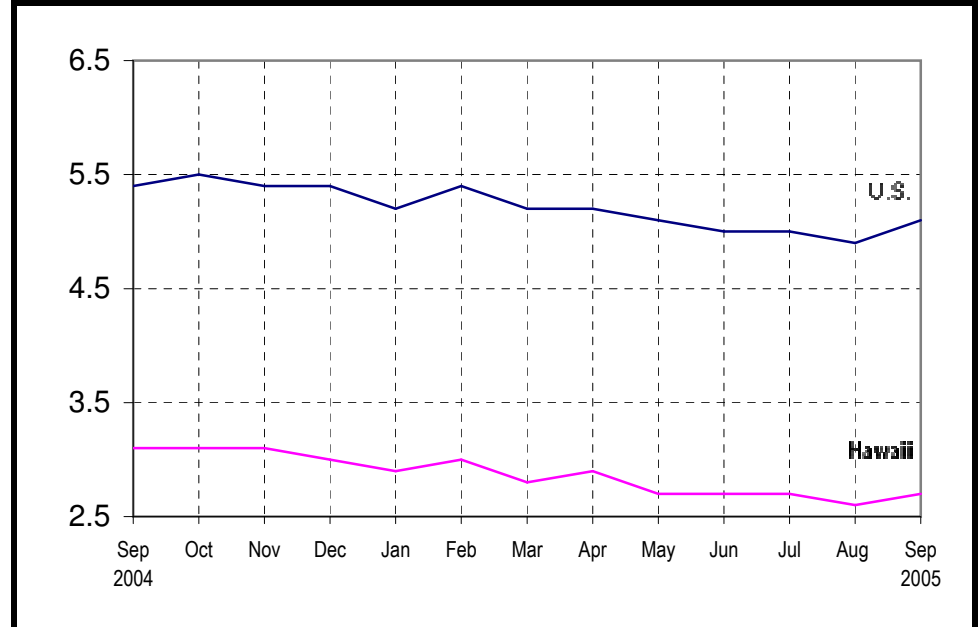
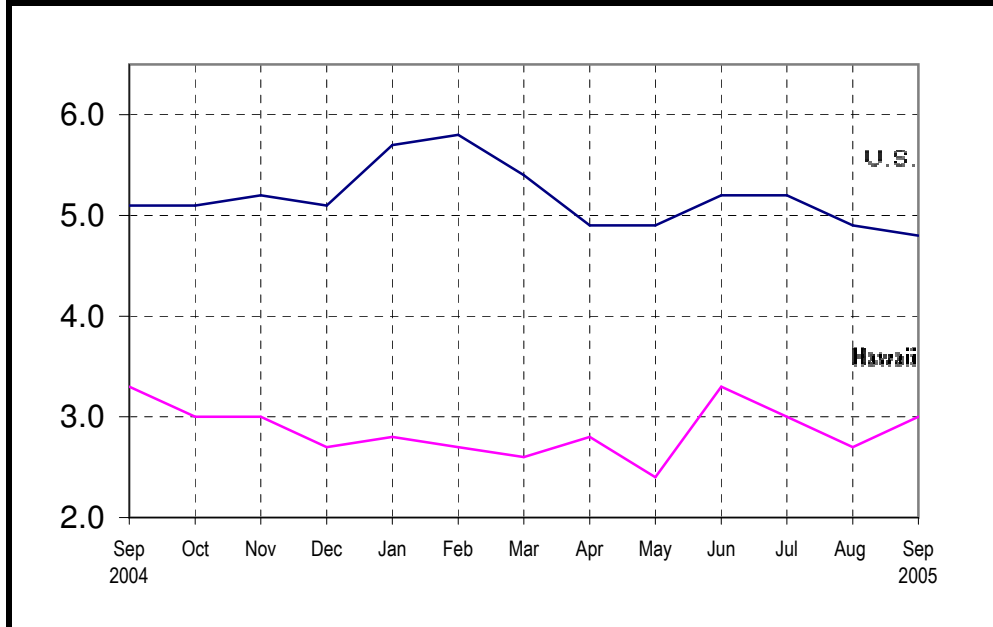
	SEP 2005	AUG 2005	SEP 2004
<b>STATE</b>	<b>2.7</b>	<b>2.6</b>	<b>3.1</b>
<b>U. S.</b>	<b>5.1</b>	<b>4.9</b>	<b>5.4</b>

	<u>Sep 2005</u>	<u>Aug 2005</u>	<u>Sep 2004</u>
Labor Force	644,200	636,300	616,950
Employment	626,700	619,600	597,550
Unemployment	17,500	16,700	19,350

\*\* totals may not add up due to rounding

	Sep 2004	Oct	Nov	Dec	Jan	Feb	Mar	Apr	May	Jun	Jul	Aug	Sep 2005
U. S.	5.1	5.1	5.2	5.1	5.7	5.8	5.4	4.9	4.9	5.2	5.2	4.9	4.8
Hawaii	3.3	3.0	3.0	2.7	2.8	2.7	2.6	2.8	2.4	3.3	3.0	2.7	3.0

	Sep 2004	Oct	Nov	Dec	Jan	Feb	Mar	Apr	May	Jun	Jul	Aug	Sep 2005
U. S.	5.4	5.5	5.4	5.4	5.2	5.4	5.2	5.2	5.1	5.0	5.0	4.9	5.1
Hawaii	3.1	3.1	3.1	3.0	2.9	3.0	2.8	2.9	2.7	2.7	2.7	2.6	2.7



**LABOR FORCE AND JOBCOUNT ESTIMATES**  
**September 2005 Report, Statewide**

	DEPARTMENT OF LABOR -- LABOR FORCE ESTIMATES							
	STATEWIDE							
	<b>(NOT SEASONALLY ADJUSTED)</b>							
	Sep-05	Aug-05	Sep-04	CHANGE FROM ONE MONTH AGO		CHANGE FROM ONE YEAR AGO		
CIVILIAN LABOR FORCE	640.1	637.8	610.9	2.3	0.4%	29.2	4.8%	
TOTAL EMPLOYED	620.9	620.7	590.6	0.2	0.0%	30.3	5.1%	
UNEMPLOYED	19.2	17.1	20.4	2.1	12.3%	-1.2	-5.9%	
percent of Labor Force	3.0%	2.7%	3.3%					
Total Nonfarm	598.4	596.3	582.6	2.1	0.4%	15.8	2.7%	
Total Private	481.8	480.8	465.9	1.1	0.2%	15.9	3.4%	
Goods Producing	48.6	48.2	45.8	0.4	0.9%	2.8	6.2%	
Service-Providing	549.8	548.1	536.8	1.7	0.3%	12.9	2.4%	
Private Service-Providing	433.2	432.6	420.1	0.6	0.1%	13.1	3.1%	
Nat. Res & Construct	33.2	32.8	30.2	0.4	1.2%	3.0	9.9%	
Construction of Buildings	10.5	10.5	9.6	0.0	1.8%	0.8	5.3%	
Special Trade Contractors	18.1	17.8	16.2	0.4	0.0%	2.0	8.7%	
Manufacturing	15.4	15.4	15.5	0.0	0.0%	-0.2	-1.0%	
Durable Goods	4.3	4.3	4.4	0.0	0.1%	0.0	-0.5%	
Non-Durable Goods	11.0	11.0	11.2	0.0	0.0%	-0.1	-1.2%	
Trade, Transportation,	117.8	117.7	112.7	0.1	0.1%	5.1	4.5%	
Wholesale Trade	17.6	17.5	17.1	0.0	0.2%	0.5	2.9%	
Retail Trade	69.1	69.3	67.0	-0.2	-0.3%	2.1	3.2%	
Food and Beverage Sto	13.0	13.0	12.7	-0.1	-0.5%	0.3	2.0%	
Grocery Stores	10.8	10.9	10.6	-0.1	-0.5%	0.2	1.8%	
Clothing and Clothing	11.2	11.3	10.0	-0.1	-0.8%	1.2	12.3%	
General Merchandise S	12.3	12.4	11.7	-0.1	-0.9%	0.6	5.5%	
Department Stores	9.2	9.3	8.5	-0.1	-1.2%	0.7	8.0%	
Trans,Warehouse, Util	31.1	30.8	28.6	0.3	0.8%	2.4	8.5%	
Utilities	2.9	2.9	2.8	0.0	-0.6%	0.1	3.9%	
Transport & Warehouse	28.2	28.0	25.9	0.3	1.0%	2.3	9.0%	
Air Transportation	10.3	10.2	10.3	0.0	0.3%	0.0	-0.2%	
Information	10.6	10.5	11.1	0.1	0.5%	-0.5	-4.7%	
Telecommunications	3.8	3.8	3.7	0.0	0.1%	0.0	1.3%	
Financial Activities	29.3	29.3	28.7	0.0	-0.1%	0.6	2.1%	
Finance and Insurance	16.4	16.5	16.4	0.0	-0.2%	0.1	0.5%	
Real Estate and Renta	12.9	12.9	12.3	0.0	0.0%	0.5	4.4%	
Professional and Busin	73.7	74.2	71.0	-0.5	-0.6%	2.7	3.8%	
Professional, Scienti	23.4	23.5	22.8	-0.1	-0.4%	0.7	2.9%	
Management of Compani	7.1	7.2	6.8	0.0	-0.2%	0.3	4.4%	
Administrative and Su	43.2	43.5	41.4	-0.4	-0.8%	1.7	4.2%	
Employment Services	16.2	16.4	15.2	-0.2	-1.4%	1.0	6.5%	
Educational and Health	69.8	68.5	67.8	1.3	1.8%	2.0	2.9%	
Educational Services	13.6	12.5	13.1	1.1	8.6%	0.4	3.4%	
Elementary and Second	7.2	6.8	6.9	0.3	4.8%	0.2	3.3%	
Health Care and Socia	56.2	56.0	54.7	0.2	0.3%	1.5	2.8%	
Ambulatory Health Car	22.0	22.1	21.5	-0.1	-0.5%	0.5	2.5%	
Hospitals	14.2	14.2	14.0	0.0	-0.3%	0.2	1.4%	
Nursing and Residenti	6.7	6.7	6.4	0.0	0.1%	0.3	4.8%	
Social Assistance	13.3	13.0	12.8	0.3	2.5%	0.5	3.9%	
Leisure and Hospitalit	107.4	107.6	104.6	-0.1	-0.1%	2.9	2.7%	
Arts, Entertainment,	11.7	11.7	11.6	0.0	0.1%	0.1	1.0%	
Accommodation and Foo	95.7	95.9	93.0	-0.2	-0.2%	2.7	2.9%	
Accommodation	39.0	39.1	37.9	-0.1	-0.4%	1.1	2.9%	
Food Services and Dri	56.8	56.8	55.1	0.0	0.0%	1.6	3.0%	
Full-Service Restaura	29.2	29.3	28.2	-0.1	-0.4%	0.9	3.3%	
Other Services	24.6	24.7	24.2	-0.1	-0.4%	0.4	1.7%	
Government	116.6	115.5	116.7	1.0	0.9%	-0.2	-0.1%	
Federal Government	31.1	31.1	31.4	-0.1	-0.2%	-0.3	-1.1%	
Ship Building & Repai	4.1	4.2	4.2	-0.1	-2.1%	-0.1	-2.5%	
Department of Defense	16.5	16.6	16.6	-0.1	-0.9%	-0.1	-0.9%	
State Government	68.6	66.6	68.3	2.0	3.0%	0.2	0.3%	
State Govt. Education	44.8	42.7	44.5	2.0	4.8%	0.3	0.7%	
Local Government	16.9	17.8	17.0	-0.9	-5.0%	0.0	-0.3%	

### Not Seasonally Adjusted Non-Ag. Jobs

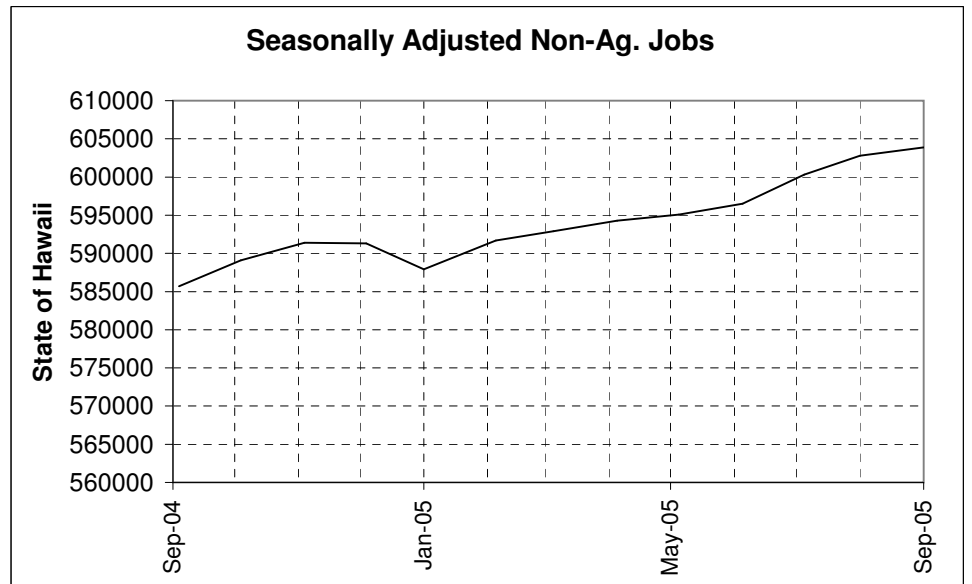
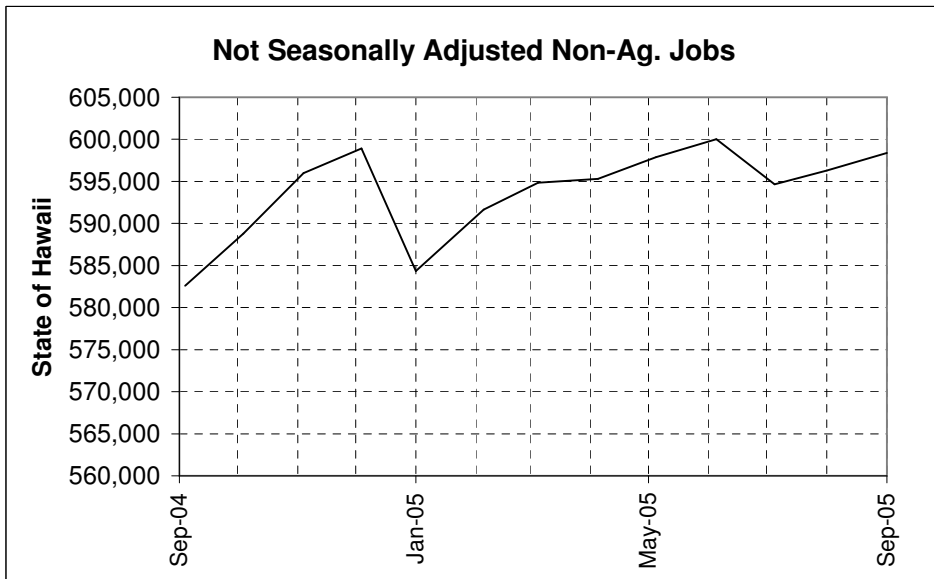
	Sep-05	Aug-05	Sep-04
NAT. RESOURCES, MINING & CONSTR.	33,250	32,850	30,250
MANUFACTURING	15,350	15,350	15,500
TRADE, TRANSPORTATION & UTILITIES	117,750	117,700	112,700
INFORMATION	10,550	10,500	11,100
FINANCIAL ACTIVITIES	29,300	29,350	28,700
PROFESSIONAL & BUSINESS SERVICES	73,750	74,200	71,050
EDUCATIONAL & HEALTH SERVICES	69,800	68,550	67,800
LEISURE & HOSPITALITY	107,450	107,600	104,600
OTHER SERVICES	24,600	24,700	24,150
GOVERNMENT	116,550	115,500	116,750
<b>TOTAL</b>	<b>598,400</b>	<b>596,300</b>	<b>582,600</b>

\* BENCHMARKED DATA

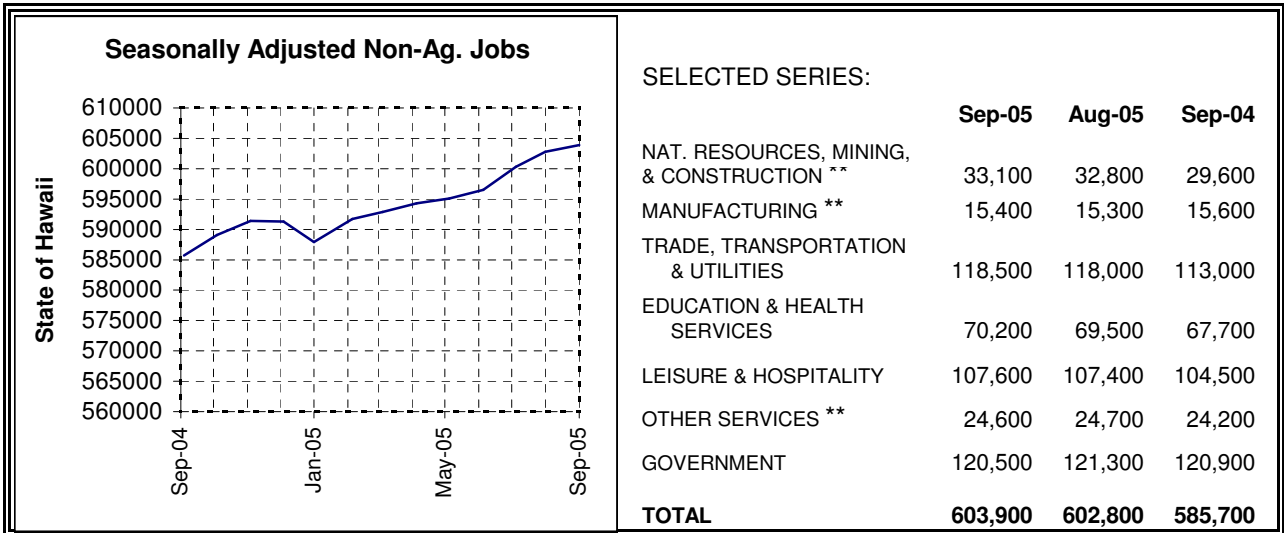
### Seasonally Adjusted Non-Ag. Jobs

	Sep-05	Aug-05	Sep-04
NAT. RESOURCES, MINING & CONSTR. **	33,100	32,800	29,600
MANUFACTURING **	15,400	15,300	15,600
TRADE, TRANSPORTATION & UTILITIES	118,500	118,000	113,000
EDUCATIONAL AND HEALTH SERVICES	70,200	69,500	67,700
LEISURE & HOSPITALITY	107,600	107,400	104,500
OTHER SERVICES **	24,600	24,700	24,200
GOVERNMENT	120,500	121,300	120,900
<b>TOTAL</b>	<b>603,900</b>	<b>602,800</b>	<b>585,700</b>

\*\* NEW SEASONALLY ADJUSTED SERIES



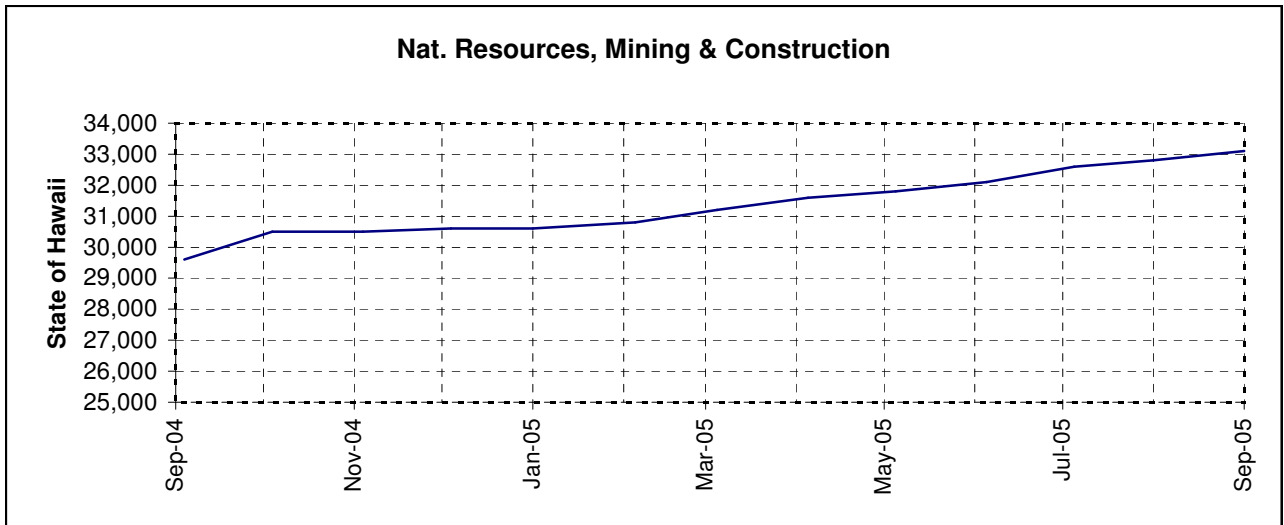




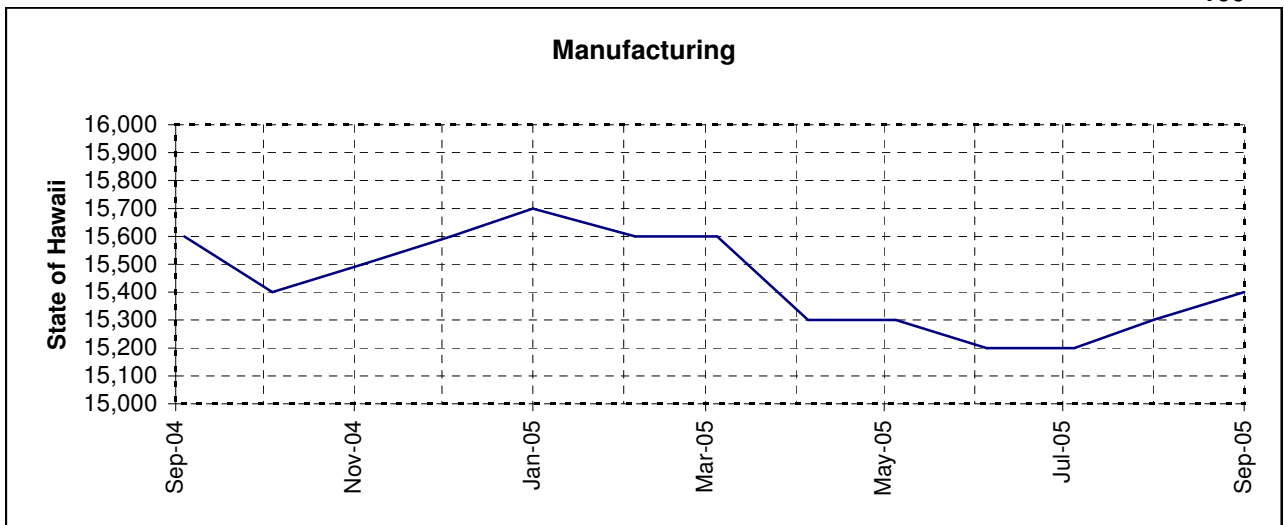
Aug-05 - Sep-05 (+1100)

\* BENCHMARKED DATA; \*\* NEW SEASONALLY ADJUSTED SERIES

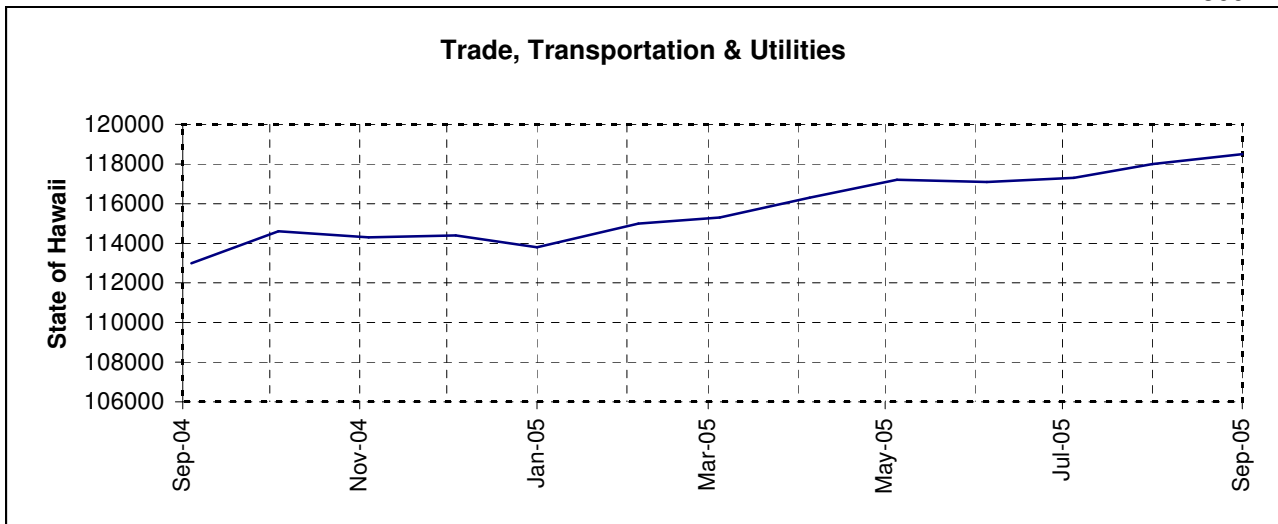
300



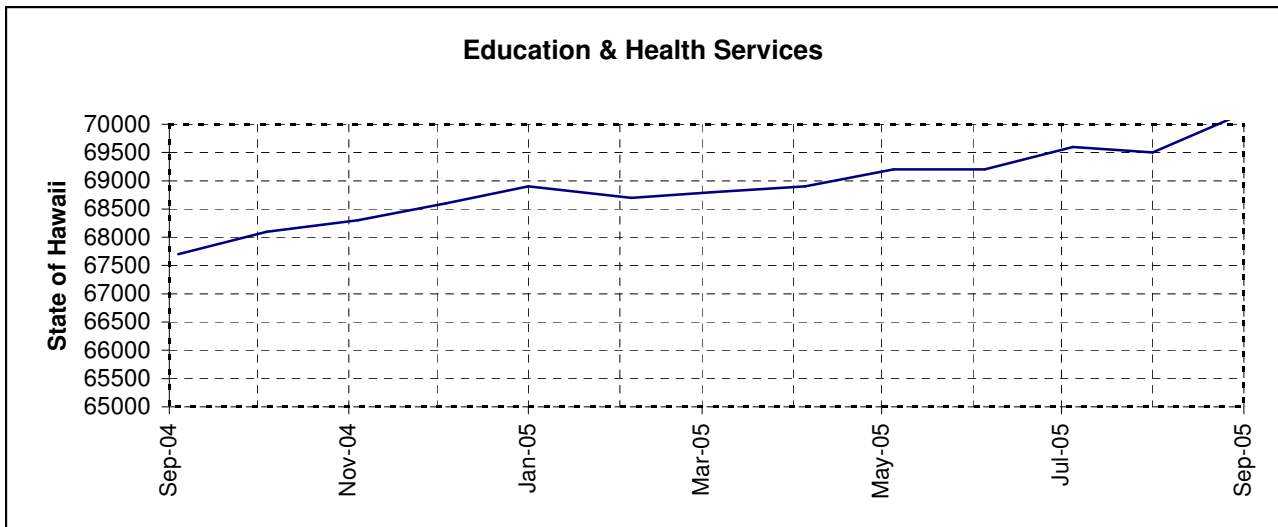
100



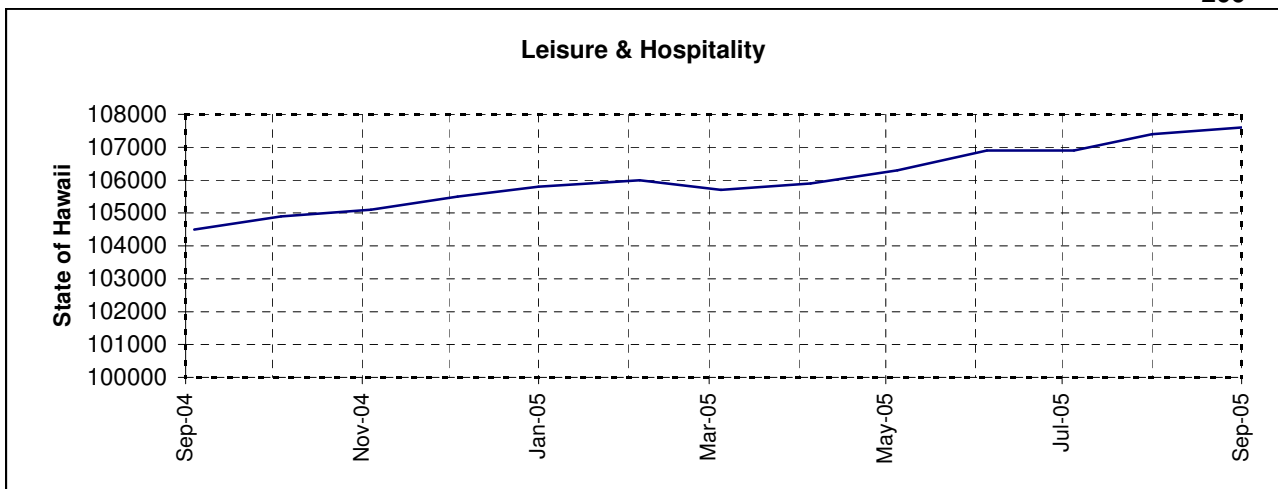
500



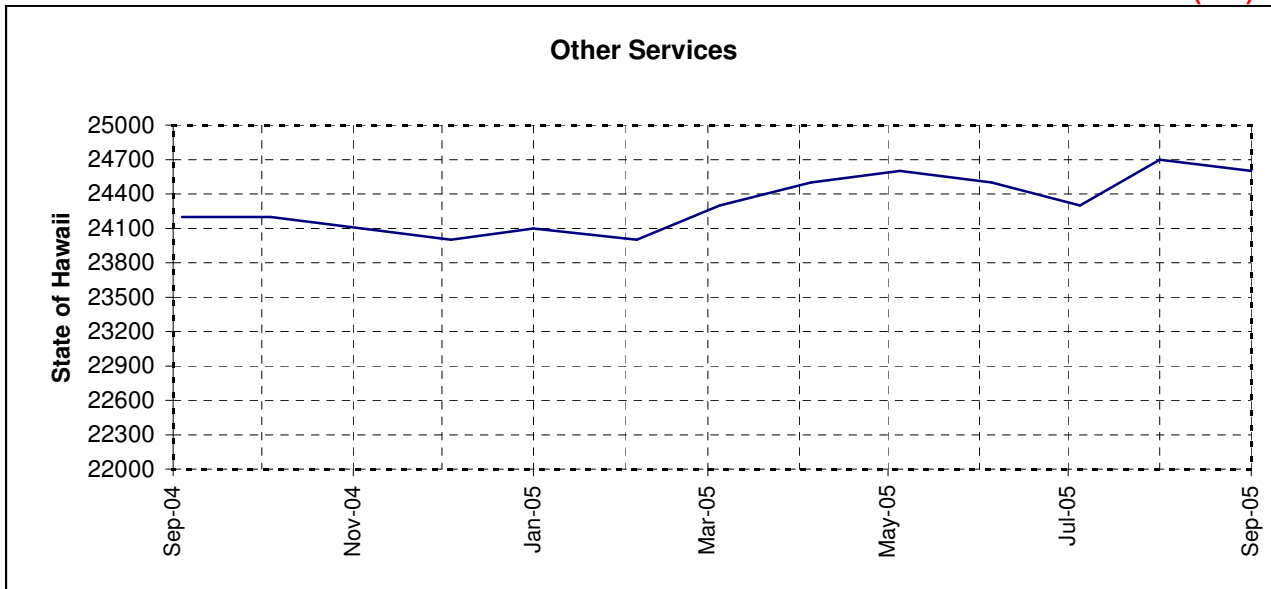
700



200



(100)



(800)

