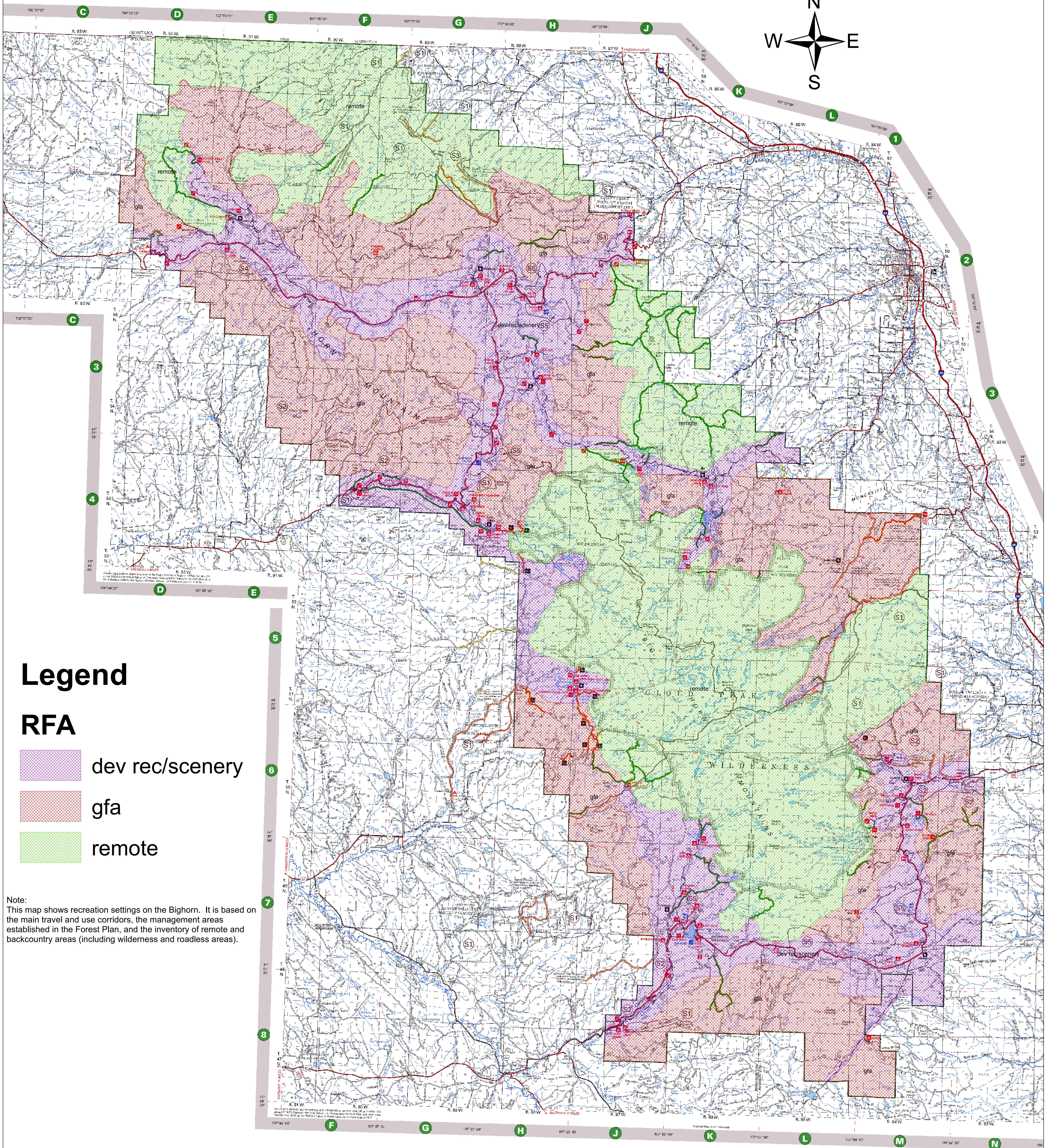
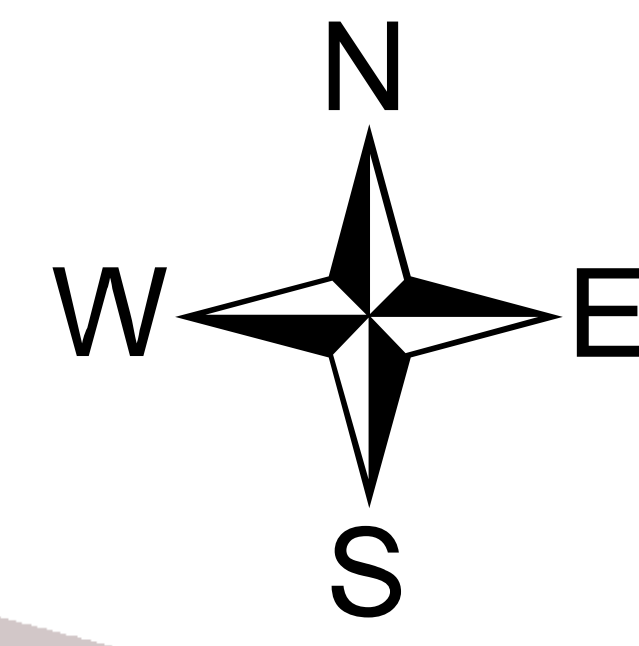


# Recreation Facility Analysis Bighorn National Forest



## Legend

### RFA

- dev rec/scenery
- gfa
- remote

Note:  
This map shows recreation settings on the Bighorn. It is based on the main travel and use corridors, the management areas established in the Forest Plan, and the inventory of remote and backcountry areas (including wilderness and roadless areas).

Disclaimer:  
The Forest Service uses the most current and complete data it has available. GIS data and product accuracy may vary. They may be developed from sources of differing accuracy, accurate only at certain scales, based on modeling or interpretation, incomplete while being created or revised, have represented features not in accurate geographic locations, etc. The Forest Service makes no expressed or implied warranty, including warranty of merchantability and fitness, with respect to the character, function, or capabilities of the data or their appropriateness for any user's purposes. The Forest Service reserves the right to correct, update, modify, or replace this geospatial information without notification. For more information, contact the Bighorn National Forest Supervisor's Office (2013 Eastside Second Street, Sheridan, WY 82801, 307-674-2600).

