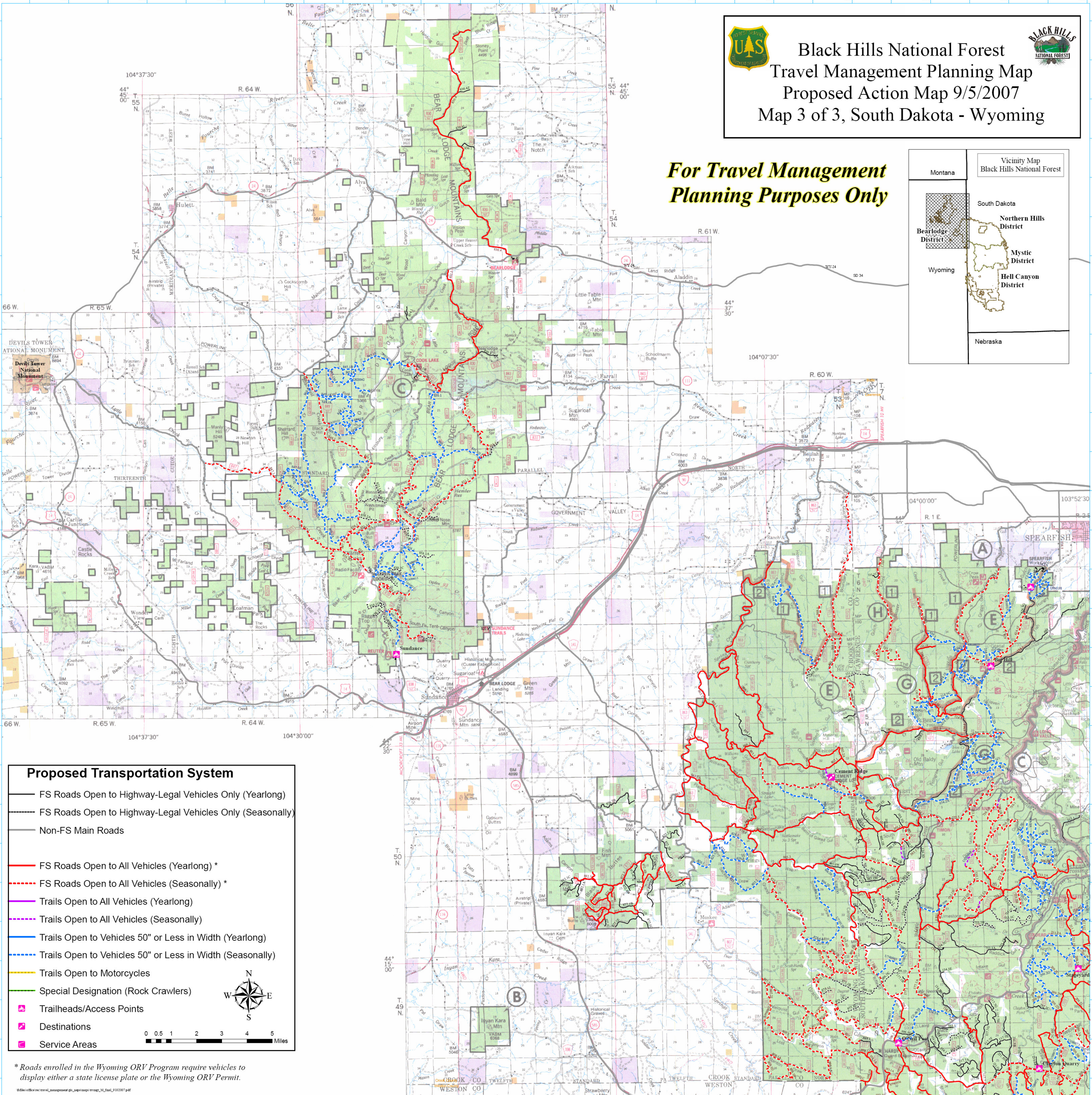
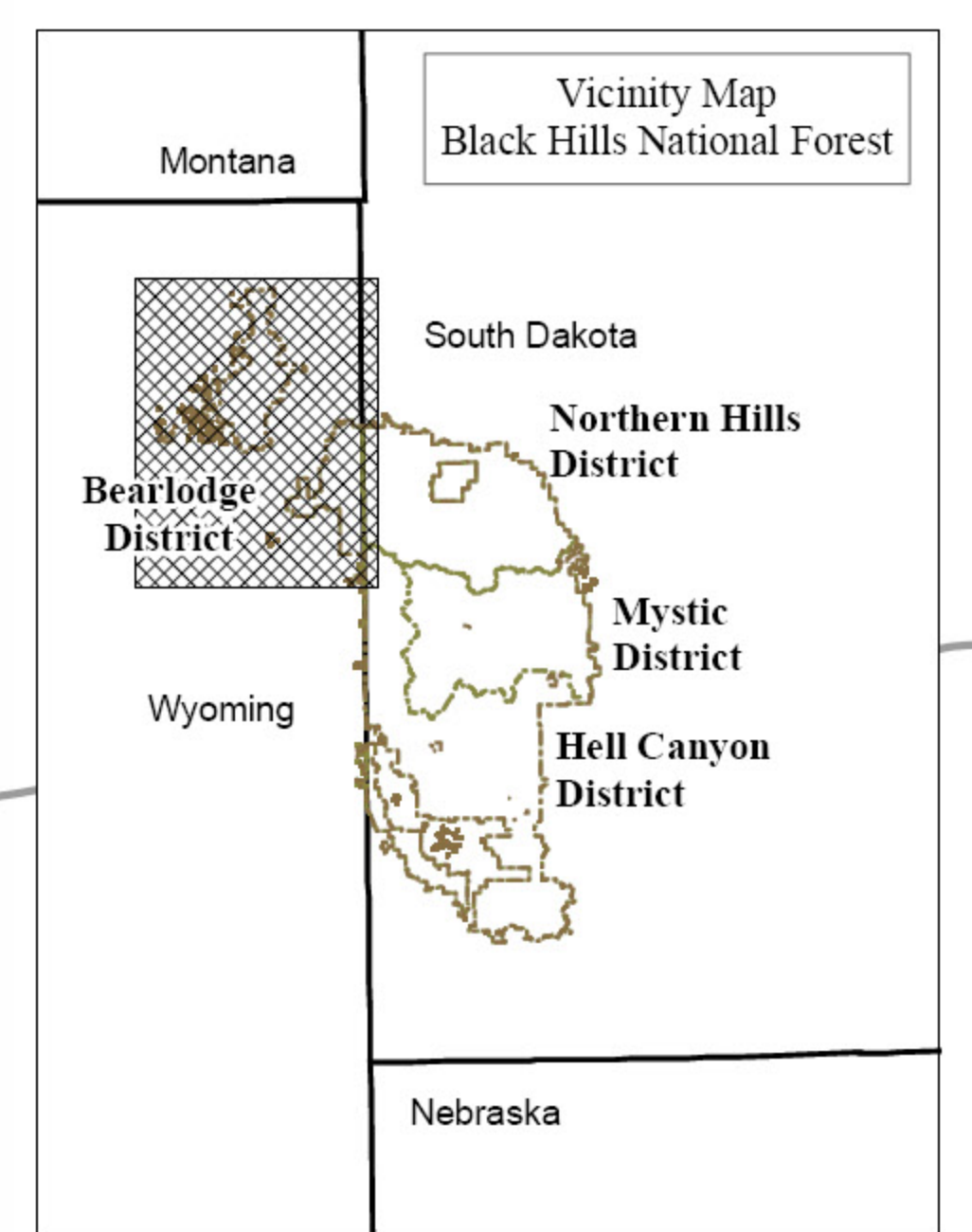




Black Hills National Forest
 Travel Management Planning Map
 Proposed Action Map 9/5/2007
 Map 3 of 3, South Dakota - Wyoming

**For Travel Management
 Planning Purposes Only**



Proposed Transportation System

- FS Roads Open to Highway-Legal Vehicles Only (Yearlong)
- FS Roads Open to Highway-Legal Vehicles Only (Seasonally)
- Non-FS Main Roads
- FS Roads Open to All Vehicles (Yearlong) *
- - - FS Roads Open to All Vehicles (Seasonally) *
- Trails Open to All Vehicles (Yearlong)
- - - Trails Open to All Vehicles (Seasonally)
- Trails Open to Vehicles 50" or Less in Width (Yearlong)
- - - Trails Open to Vehicles 50" or Less in Width (Seasonally)
- Trails Open to Motorcycles
- Special Designation (Rock Crawlers)
- 📍 Trailheads/Access Points
- 📍 Destinations
- 📍 Service Areas

0 0.5 1 2 3 4 5 Miles

* Roads enrolled in the Wyoming ORV Program require vehicles to display either a state license plate or the Wyoming ORV Permit.