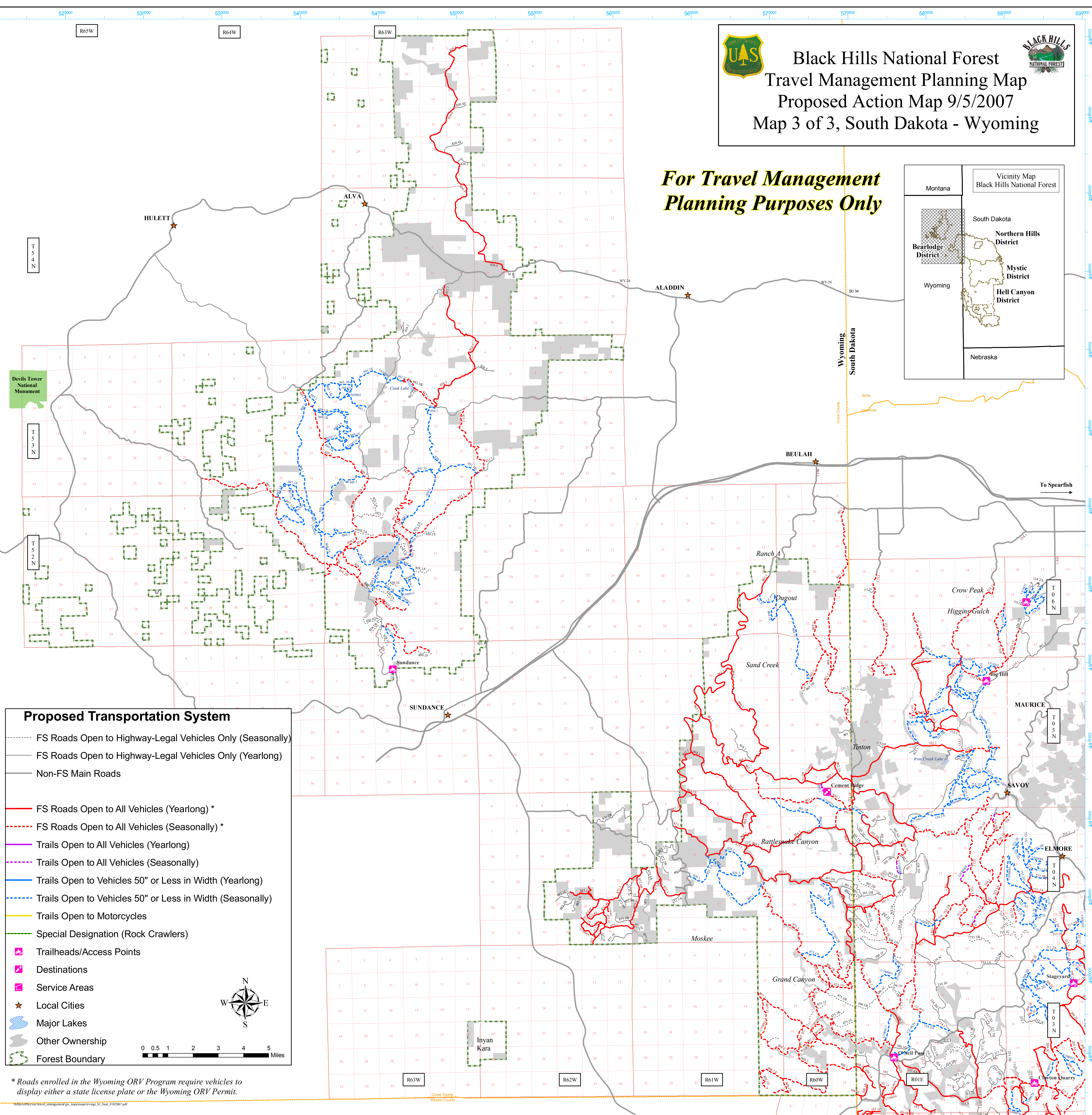
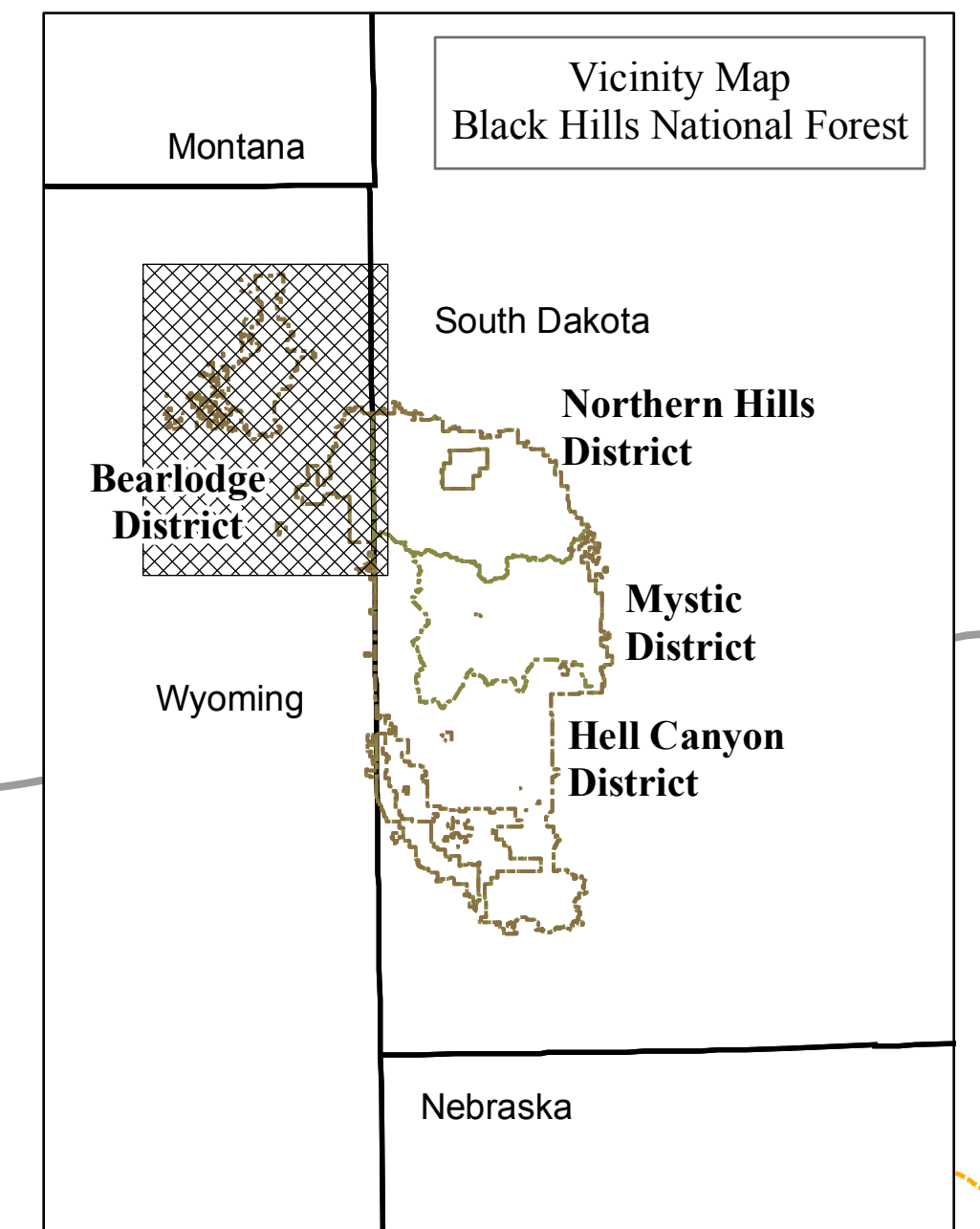




Black Hills National Forest  
 Travel Management Planning Map  
 Proposed Action Map 9/5/2007  
 Map 3 of 3, South Dakota - Wyoming

**For Travel Management  
 Planning Purposes Only**



**Proposed Transportation System**

- FS Roads Open to Highway-Legal Vehicles Only (Seasonally)
- FS Roads Open to Highway-Legal Vehicles Only (Yearlong)
- Non-FS Main Roads
- FS Roads Open to All Vehicles (Yearlong) \*
- FS Roads Open to All Vehicles (Seasonally) \*
- Trails Open to All Vehicles (Yearlong)
- Trails Open to All Vehicles (Seasonally)
- Trails Open to Vehicles 50" or Less in Width (Yearlong)
- Trails Open to Vehicles 50" or Less in Width (Seasonally)
- Trails Open to Motorcycles
- Special Designation (Rock Crawlers)
- Trailheads/Access Points
- Destinations
- Service Areas
- Local Cities
- Major Lakes
- Other Ownership
- Forest Boundary

0 0.5 1 2 3 4 5 Miles

\* Roads enrolled in the Wyoming ORV Program require vehicles to display either a state license plate or the Wyoming ORV Permit.