



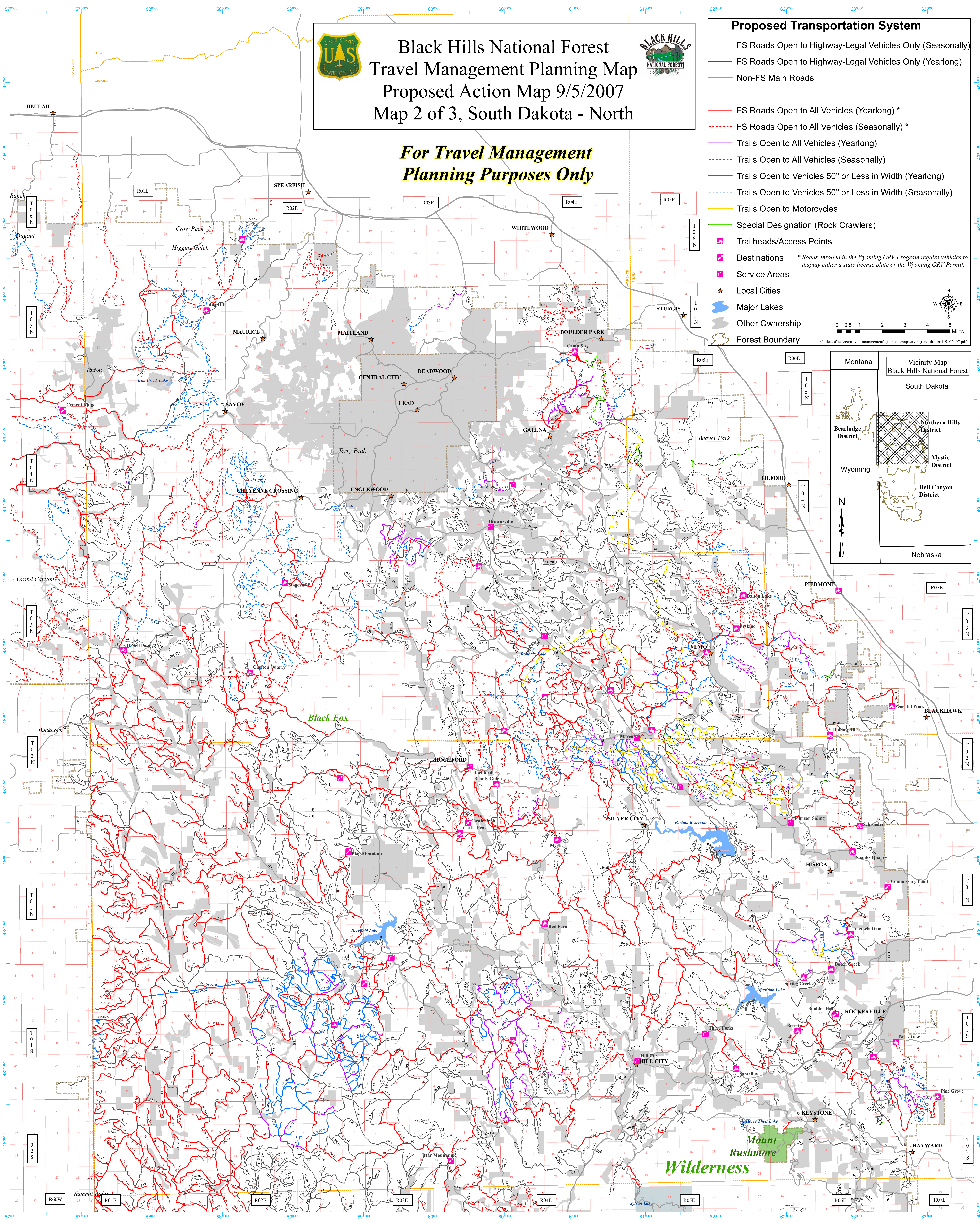
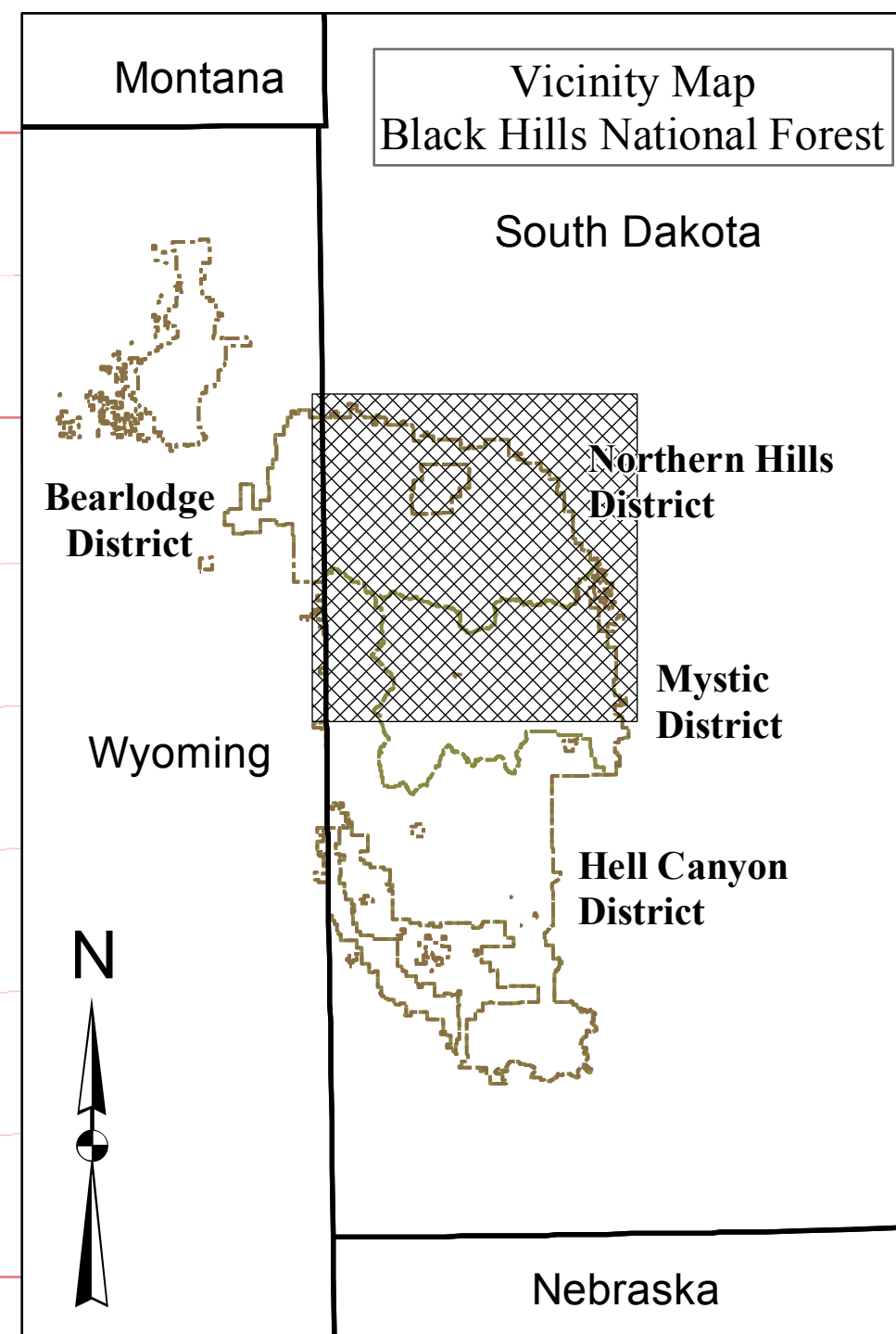
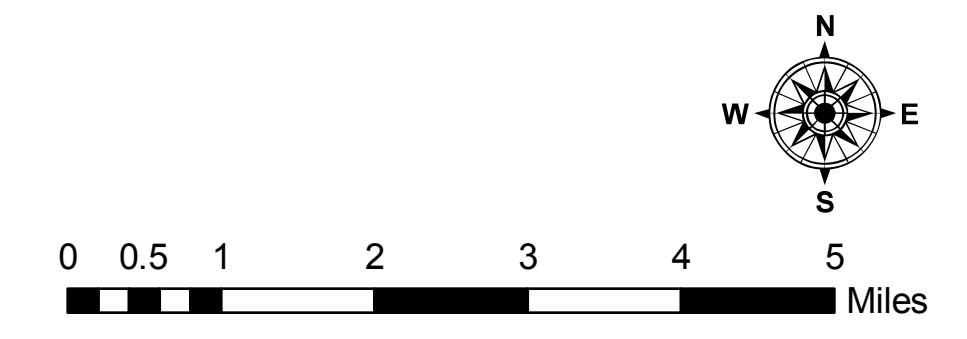
Black Hills National Forest Travel Management Planning Map Proposed Action Map 9/5/2007 Map 2 of 3, South Dakota - North



*For Travel Management
Planning Purposes Only*

Proposed Transportation System

- FS Roads Open to Highway-Legal Vehicles Only (Seasonally)
 - FS Roads Open to Highway-Legal Vehicles Only (Yearlong)
 - Non-FS Main Roads
 - FS Roads Open to All Vehicles (Yearlong) *
 - FS Roads Open to All Vehicles (Seasonally) *
 - Trails Open to All Vehicles (Yearlong)
 - Trails Open to All Vehicles (Seasonally)
 - Trails Open to Vehicles 50" or Less in Width (Yearlong)
 - Trails Open to Vehicles 50" or Less in Width (Seasonally)
 - Trails Open to Motorcycles
 - Special Designation (Rock Crawlers)
 - Trailheads/Access Points
 - Destinations
 - Service Areas
 - Local Cities
 - Major Lakes
 - Other Ownership
 - Forest Boundary
- * Roads enrolled in the Wyoming ORV Program require vehicles to display either a state license plate or the Wyoming ORV Permit.



*Mount
Rushmore
Wilderness*