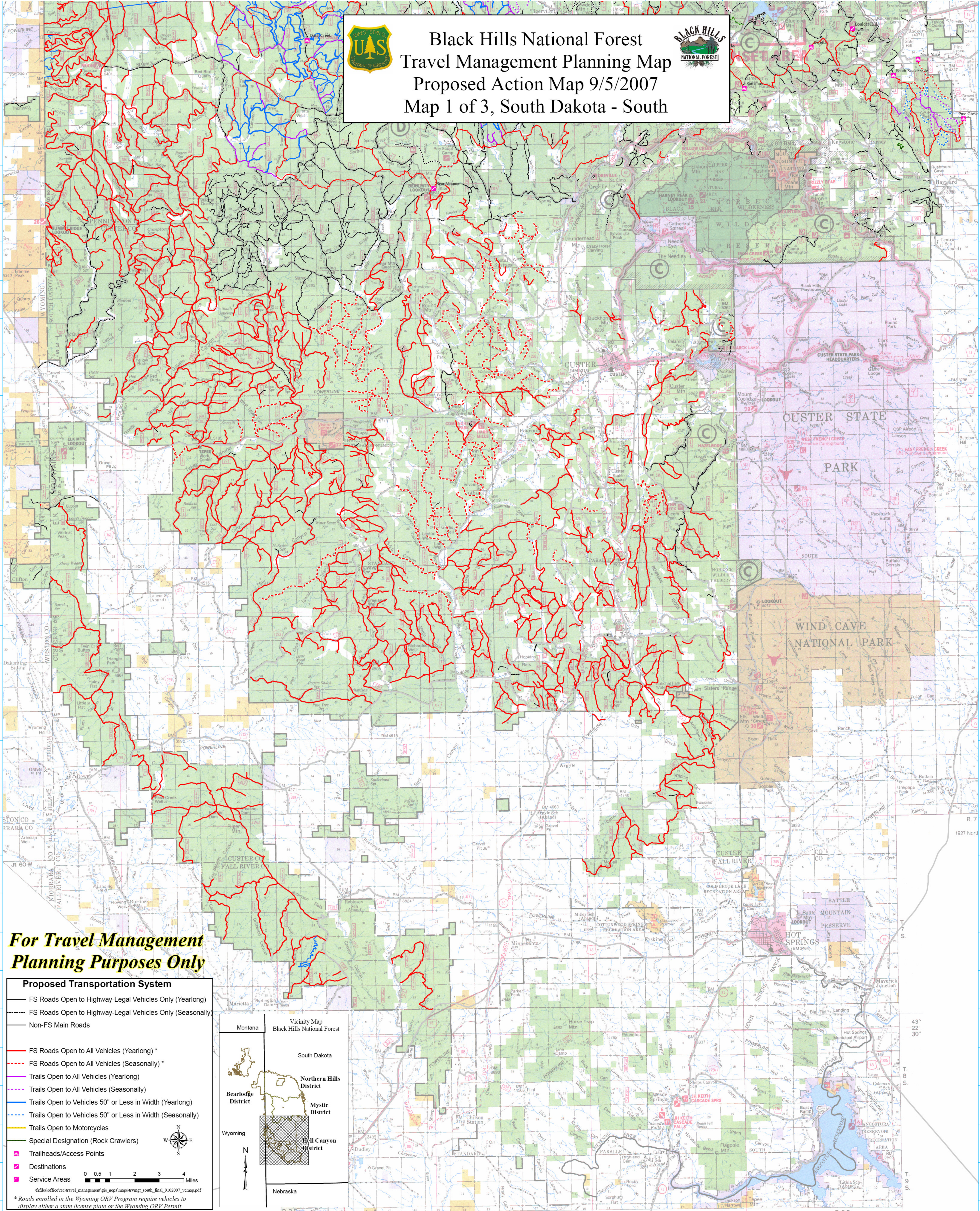




# Black Hills National Forest Travel Management Planning Map Proposed Action Map 9/5/2007 Map 1 of 3, South Dakota - South



## For Travel Management Planning Purposes Only

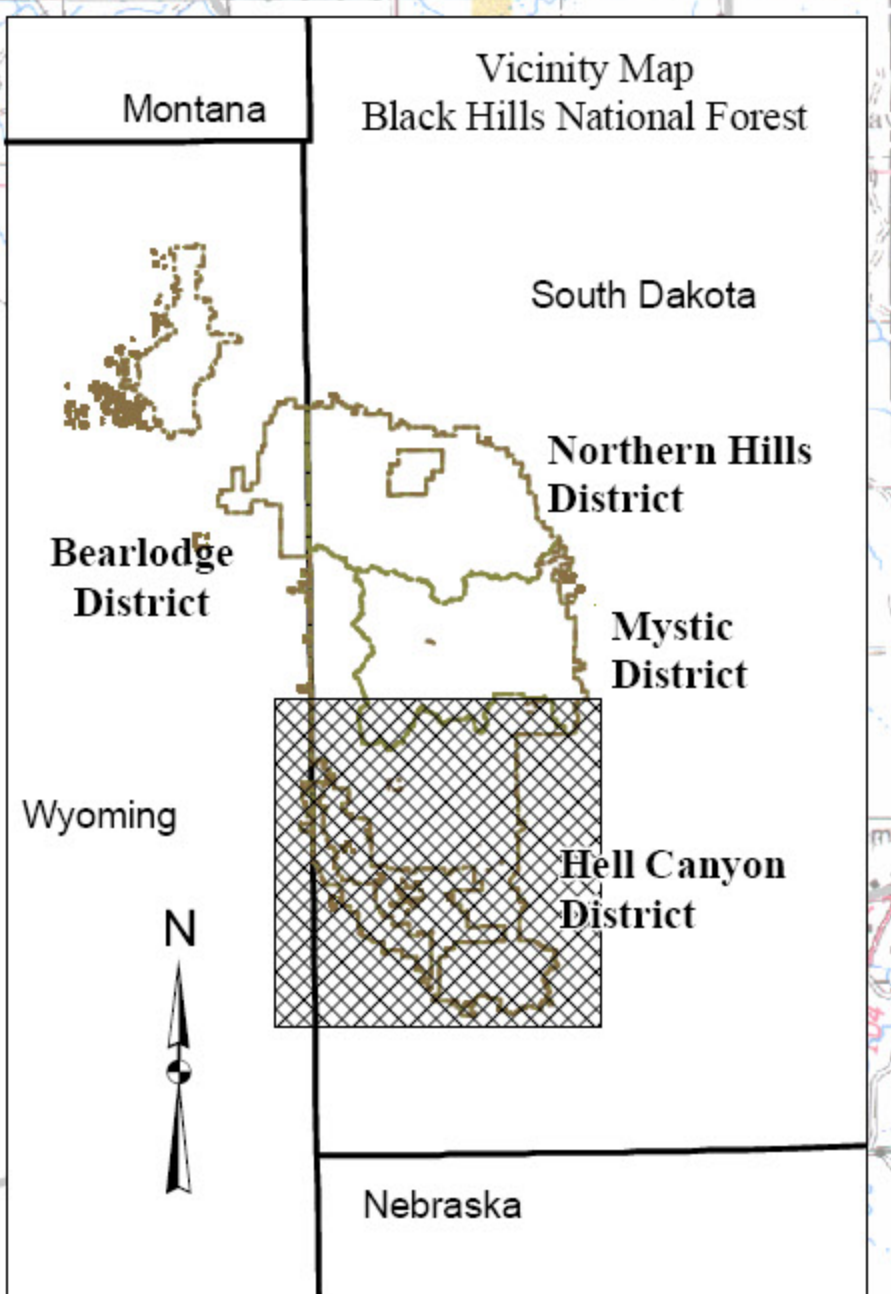
**Proposed Transportation System**

- FS Roads Open to Highway-Legal Vehicles Only (Yearlong)
- - - FS Roads Open to Highway-Legal Vehicles Only (Seasonally)
- Non-FS Main Roads
- FS Roads Open to All Vehicles (Yearlong) \*
- - - FS Roads Open to All Vehicles (Seasonally) \*
- Trails Open to All Vehicles (Yearlong)
- - - Trails Open to All Vehicles (Seasonally)
- Trails Open to Vehicles 50" or Less in Width (Yearlong)
- - - Trails Open to Vehicles 50" or Less in Width (Seasonally)
- Trails Open to Motorcycles
- Special Designation (Rock Crawlers)
- Trailheads/Access Points
- Destinations
- Service Areas

0 0.5 1 2 3 4 Miles

\\files\office\rec\travel\_management\gis\_nepa\maps\trmg\trmg\_south\_final\_9102007\_vcmap.pdf

\* Roads enrolled in the Wyoming ORV Program require vehicles to display either a state license plate or the Wyoming ORV Permit.



43° 22' 30"

T. 8 S.  
T. 9 S.

578000 580000 582000 584000 586000 588000 590000 592000 594000 596000 598000 600000 602000 604000 606000 608000 610000 612000 614000 616000 618000 620000 622000 624000 626000 628000 630000