



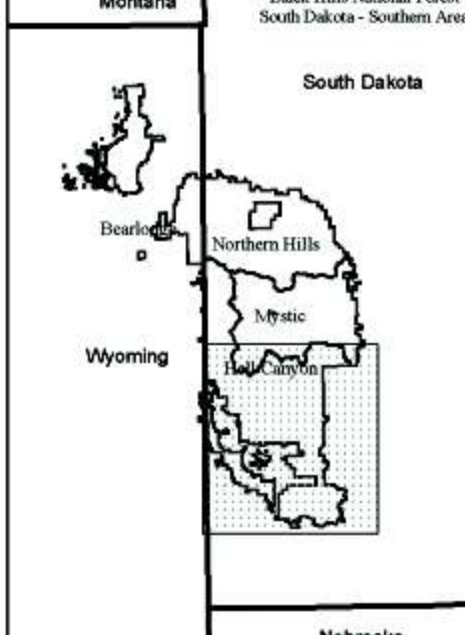
Black Hills National Forest Travel Information Map

South Dakota Southern Area
Expires September 30, 2009 or if Rescinded



Remember the Tread Lightly! Pledge:

Travel and recreate with minimum impact.
Respect the environment and the rights of others.
Educate yourself, plan and prepare before you go.
Allow for future use of the outdoors by leaving it better than you found it.
Discover the rewards of responsible recreation.



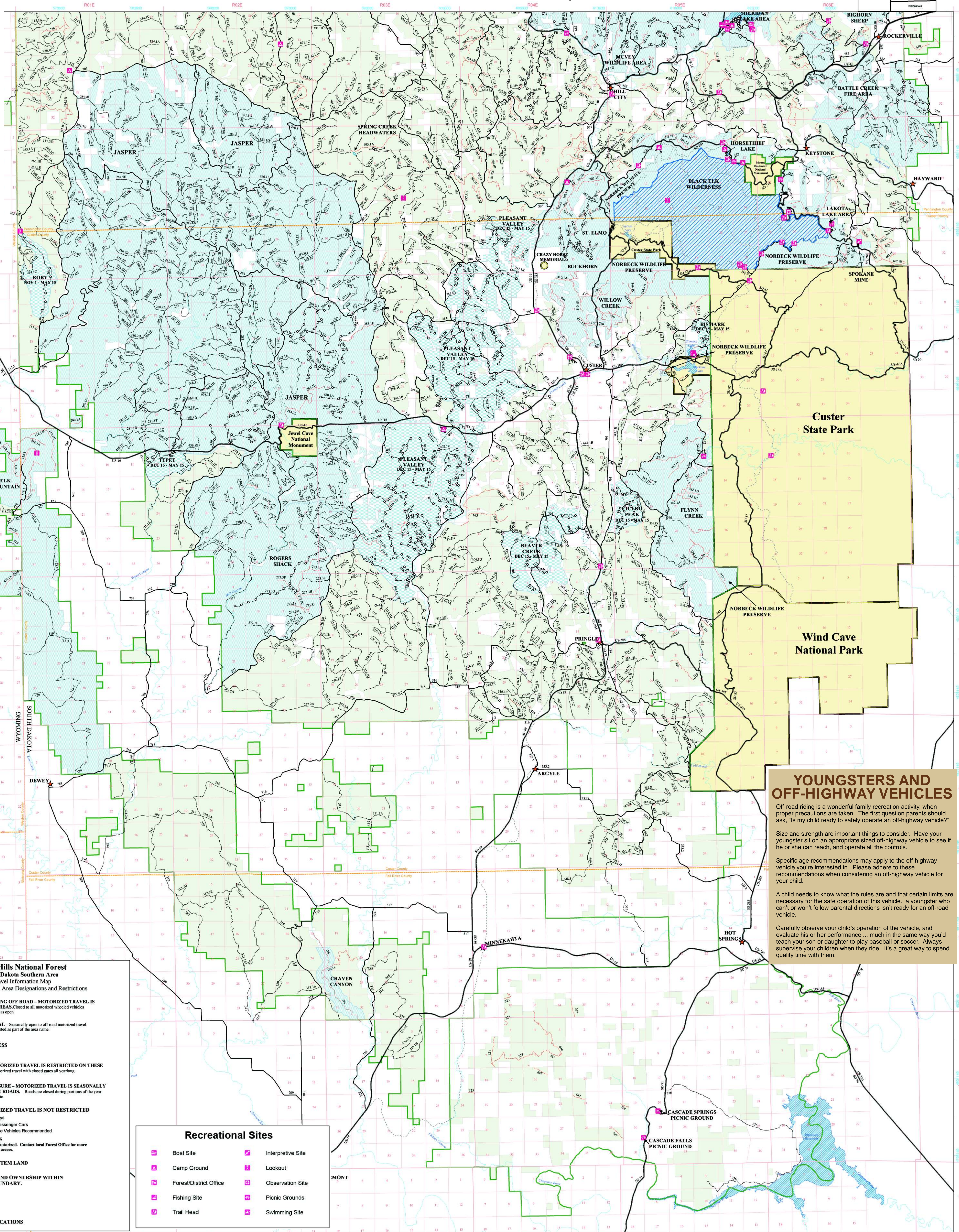
tread lightly!

LEAVING A GOOD IMPRESSION



Expires September 30, 2009 or if Rescinded

Black Hills National Forest
Travel Information Map
South Dakota Southern Area



YOUNGSTERS AND OFF-HIGHWAY VEHICLES

Off-road riding is a wonderful family recreation activity, when proper precautions are taken. The first question parents should ask, "Is my child ready to safely operate an off-highway vehicle?"

Size and strength are important things to consider. Have your youngster sit on an appropriate sized off-highway vehicle to see if he or she can reach, and operate all the controls.

Specific age recommendations may apply to the off-highway vehicle you're interested in. Please adhere to these recommendations when considering an off-highway vehicle for your child.

A child needs to know what the rules are and that certain limits are necessary for the safe operation of this vehicle. A youngster who can't or won't follow parental directions isn't ready for an off-road vehicle.

Carefully observe your child's operation of the vehicle, and evaluate his or her performance... much in the same way you'd teach your son or daughter to play baseball or soccer. Always supervise your children when they ride. It's a great way to spend quality time with them.

Black Hills National Forest South Dakota Southern Area Travel Information Map

- Roads, Trails, and Area Designations and Restrictions
- AREA CLOSURE YEARLONG OFF ROAD - MOTORIZED TRAVEL IS RESTRICTED IN THESE AREAS. Closed to all motorized wheeled vehicles year-round except on roads shown as open.
 - AREA CLOSURE SEASONAL - Seasonally open to off road motorized travel. Dates of the seasonal closure are listed as part of the area name.
 - BLACK ELK WILDERNESS
 - ROADS:
 - ROAD CLOSURE - MOTORIZED TRAVEL IS RESTRICTED ON THESE ROADS. Roads closed to motorized travel with closed gates all yearlong.
 - SEASONAL ROAD CLOSURE - MOTORIZED TRAVEL IS SEASONALLY RESTRICTED ON THESE ROADS. Roads are closed during portions of the year as posted on the road closure gate.
 - OPEN ROAD - MOTORIZED TRAVEL IS NOT RESTRICTED
 - RECREATIONAL TRAILS
 - Major Highways
 - Suitable for Passenger Cars
 - High Clearance Vehicles Recommended
 - PRIVATE OR OTHER LAND OWNERSHIP WITHIN NATIONAL FOREST BOUNDARY.
 - MAJOR LAKES
 - PARKS / MONUMENTS
 - CITY / COMMUNITY LOCATIONS

Recreational Sites

- Boat Site
- Camp Ground
- Forest/District Office
- Fishing Site
- Trail Head
- Interpretive Site
- Lookout
- Observation Site
- Picnic Grounds
- Swimming Site