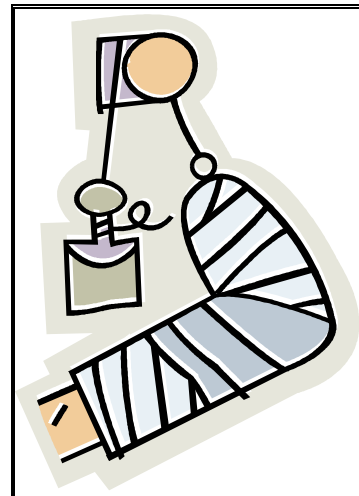
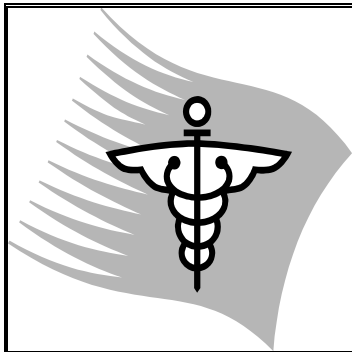
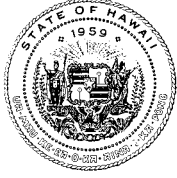


# WORKERS' COMPENSATION DATA BOOK 2005



STATE OF HAWAII  
DEPARTMENT OF LABOR AND INDUSTRIAL RELATIONS  
RESEARCH AND STATISTICS OFFICE



**STATE OF HAWAII**  
**LINDA LINGLE, GOVERNOR**



**DEPARTMENT OF LABOR AND INDUSTRIAL RELATIONS**  
**NELSON B. BEFITEL, DIRECTOR**  
**COLLEEN Y. LaCLAIR, DEPUTY DIRECTOR**



**RESEARCH AND STATISTICS OFFICE**  
**NAOMI HARADA, Chief**

**OPERATIONS MANAGEMENT INFORMATION STAFF**  
**DAYLE KOBASHIGAWA, Supervisor**

Prepared by:  
ELIENNE YOSHIDA  
ROY KUNIMUNE  
SIRIPORN ROLSETH

In Cooperation with:  
**DISABILITY COMPENSATION DIVISION**  
GARY HAMADA, Administrator

# **WORKERS' COMPENSATION DATA BOOK 2005**

## **INTRODUCTION**

The WORKERS' COMPENSATION DATA BOOK presents a summary of information on injuries and illnesses reported to the Disability Compensation Division of the State of Hawaii Department of Labor and Industrial Relations.

This publication includes work injury and illness case, cost and days lost information by island, industry, occupation, sex, part of body, average weekly wage, source of injury or illness, marital status, event or exposure, nature of injury or illness and age.

Publications from 2000 are available on the Internet at <http://hawaii.gov/labor/rs/>.

Please direct inquiries or comments to:

State of Hawaii  
Department of Labor & Industrial Relations  
Research and Statistics Office  
Operations Management Information Staff  
830 Punchbowl St., Room 304  
Honolulu, HI 96813

Data contained in this report – 586-9014

Copies of this report – 586-8999

E-mail: [dliir.research@hawaii.gov](mailto:dliir.research@hawaii.gov)

## TABLE OF CONTENTS

Highlights 2005 .....	3
2005 Hawaii Reported Injuries and Illnesses .....	4
2005 Reported Injuries and Illnesses: Frequency by Industry .....	5
2005 Hawaii Processed Cases and Cost .....	6
Average Cost by Part of Body .....	6
Back Cases: Cost and Days Lost by Nature of Injury and Illness .....	7
2005 Hawaii Workers' Compensation Statistics	
Reported Cases:	
Part of Body Affected by Nature of Injury or Illness .....	8
Event or Exposure by Source of Injury or Illness .....	8
Reported & Processed Cases, Cost, Days Lost:	
State .....	9
Oahu .....	12
Maui County .....	14
Hawaii County .....	16
Kauai County .....	18
2005 Hawaii Reported Fatalities .....	20
2005 Hearings and Decisions Issued .....	21
Maximum Weekly Wage Base and	
Maximum Weekly Benefit Amount History .....	21
Digest of the Workers' Compensation Law .....	22
Definitions .....	23
Technical Notes .....	24

# HIGHLIGHTS 2005

## STATE OF HAWAII

**REPORTED CASES: 28,018**  
**PROCESSED CASES WITH COST: 39,889**  
**TOTAL COST: \$250,779,145**  
**COST PER CASE: \$6,287**  
**MEDICAL COST: \$97,638,645**  
**DAYS LOST: 1,094,172**  
**REPORTED FATALITIES: 21**



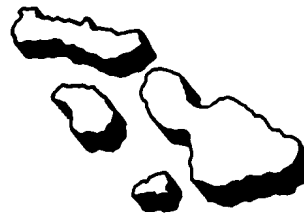
### Kauai County

Reported Cases: 1,625  
Processed Cases with Cost: 2,331  
Total Cost: \$13,038,358  
Cost Per Case: \$5,593  
Medical Cost: \$5,342,847  
Days Lost: 61,725  
Reported Fatality: 4



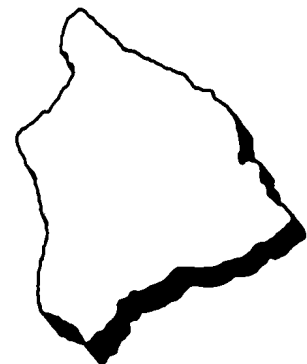
### Maui County

Reported Cases: 4,258  
Processed Cases with Cost: 5,953  
Total Cost: \$34,464,533  
Cost Per Case: \$5,789  
Medical Cost: \$14,868,662  
Days Lost: 140,171  
Reported Fatality: 2



### Oahu

Reported Cases: 18,299  
Processed Cases with Cost: 25,792  
Total Cost: \$165,205,370  
Cost Per Case: \$6,405  
Medical Cost: \$62,811,289  
Days Lost: 718,229  
Reported Fatality: 8



### Hawaii County

Reported Cases: 3,836  
Processed Cases with Cost: 5,813  
Total Cost: \$38,070,884  
Cost Per Case: \$6,549  
Medical Cost: \$14,615,847  
Days Lost: 174,047  
Reported Fatality: 7

## 2005 HAWAII REPORTED INJURIES AND ILLNESSES

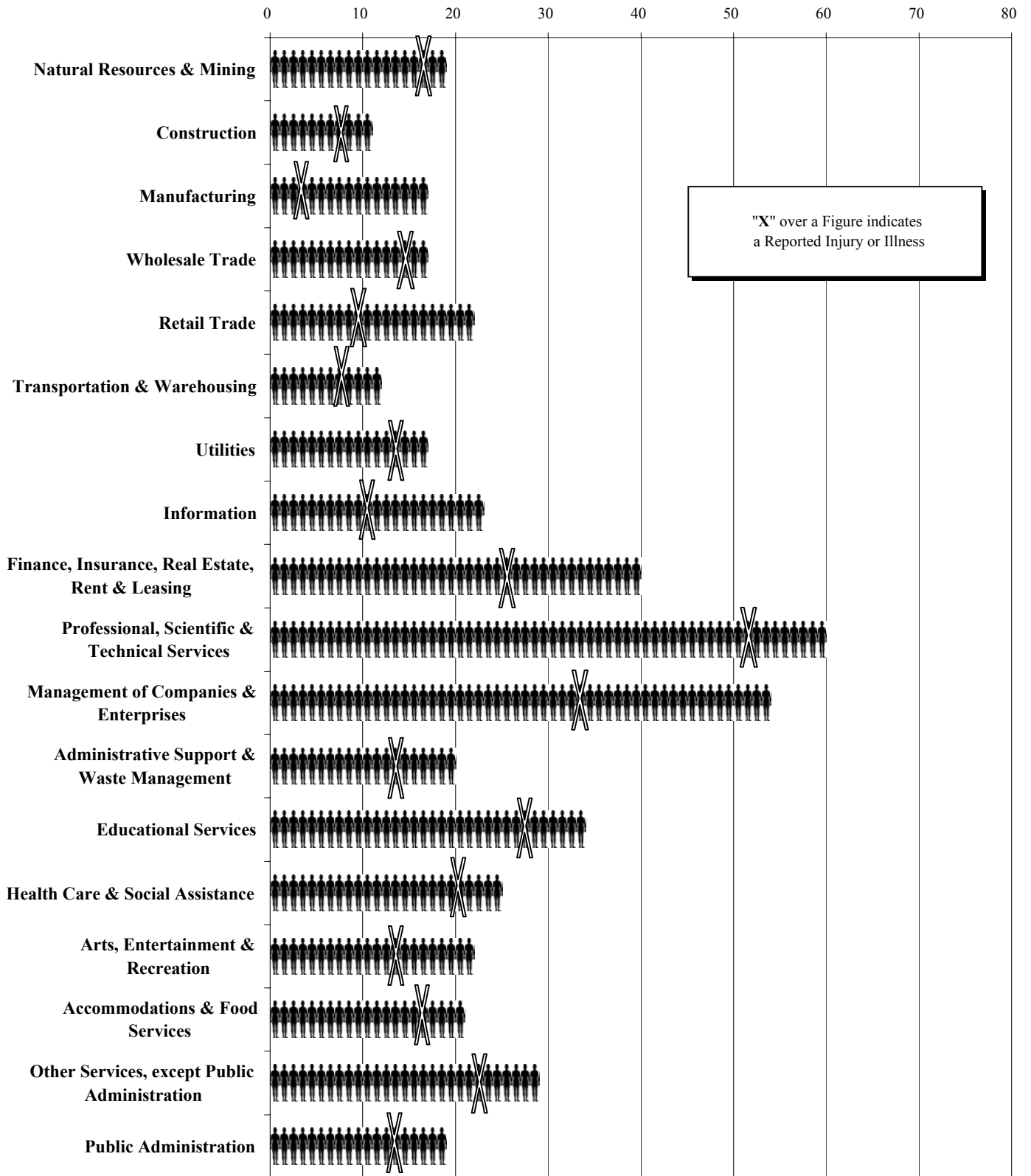
In 2005, the number of reported injuries and illnesses increased by 1,697 or 6.4 percent to 28,018 and employment increased by 3.4 percent to 572,384. All industries, except for natural resources & mining, and arts, entertainment & recreation had increases in the number of reported cases. Health care & social assistance had the lowest percent increase at 1.4, while management of companies & enterprises had the highest percent increase at 43.2. Construction had the highest increase in the number of reported cases at 480 or 19.8 percent. This may be due to continued yearly increases in construction employment where more work hazards exist. On the other hand, natural resources & mining, and arts, entertainment & recreation decreased 16.1 percent and 3.4 percent respectively. The number of reported injuries and illnesses for information industry were stable over the year having 467 in both 2004 and 2005.

Natural resources & mining and arts, entertainment & recreation had decreases in their frequencies over the year with one in every nineteen workers and one in every twenty-two workers respectively. The frequencies for all other industries increased or remained the same. Construction continues to retain the highest frequency with one reported injury or illness for every eleven workers. Professional, scientific & technical services had the lowest frequency of reported cases with one injury or illness for every sixty workers, which may be due to a low hazard environment. Last year, management of companies & enterprises had the lowest frequency of injuries or illnesses with one for every seventy-two workers, but this year they had the highest increase in frequency of injuries or illnesses, with one reported case for every fifty-four workers.

### Employment and Reported Cases by Industry for Hawaii

INDUSTRY	2004			2005		
	Employment	Reported Cases	Frequency	Employment	Reported Cases	Frequency
Natural Resources & Mining	8,117	497	1 in 16	7,888	417	1 in 19
Construction	29,210	2,425	1 in 12	33,110	2,905	1 in 11
Manufacturing	15,516	874	1 in 18	15,219	920	1 in 17
Wholesale Trade	17,066	941	1 in 18	17,627	1,045	1 in 17
Retail Trade	67,104	2,973	1 in 23	69,297	3,137	1 in 22
Transportation & Warehousing	25,451	2,084	1 in 12	27,922	2,303	1 in 12
Utilities	2,728	164	1 in 17	2,873	167	1 in 17
Information	10,860	467	1 in 23	10,798	467	1 in 23
Finance, Insurance, Real Estate, Rent & Leasing	28,857	704	1 in 41	29,323	726	1 in 40
Professional, Scientific & Technical Services	22,860	357	1 in 64	23,257	390	1 in 60
Management of Companies & Enterprises	6,852	95	1 in 72	7,330	136	1 in 54
Administrative Support & Waste Management	41,055	1,940	1 in 21	43,627	2,233	1 in 20
Educational Services	11,945	351	1 in 34	12,586	371	1 in 34
Health Care & Social Assistance	54,054	2,181	1 in 25	55,900	2,211	1 in 25
Arts, Entertainment & Recreation	11,427	552	1 in 21	11,610	533	1 in 22
Accommodations & Food Services	92,321	4,215	1 in 22	94,777	4,503	1 in 21
Other Services, except Public Administration	23,451	767	1 in 31	24,027	818	1 in 29
Public Administration	84,906	4,491	1 in 19	85,112	4,566	1 in 19

## 2005 Reported Injuries and Illnesses: Frequency by Industry



# 2005 HAWAII PROCESSED CASES AND COST

## 2005 Average Cost by Part of Body



In 2005, all major workers' compensation processed case statistics fell from the previous year. State processed cases dropped from 53,914 to 52,458 (Table on page 9), a 2.7 percent decrease. The total processed cases with cost decreased 3.3 percent from 41,253 cases to 39,889. Total cost decreased from \$271,290,021 to \$250,779,145, a 7.6 percent decrease. The number of days away from work due to temporary total disability dropped by 7.8 percent to 1,094,172 days excluding the 3-day waiting period.

Medical costs which made up \$97.6 million or 38.9 percent of all Workers' Compensation payments compared to \$106.8 million or 39.4 percent in 2004.

The average medical cost per case was \$2,644 compared to \$2,803 a year ago. Temporary total disability costs dropped 7.3 percent to \$59,067,148. The average cost per case was \$4,331. Permanent total disability had the highest average payment at \$24,360 for 2005.

The highest average cost by part of body was shoulder at \$9,592, increasing 1.3 percent over the previous year. The neck was the second highest at \$8,320 followed by back at \$8,066. The eyes had the lowest average cost at \$872.

## 2005 HAWAII TYPE OF

INDUSTRY	TOTAL COST	TEMPORARY TOTAL DISABILITY		TEMPORARY PARTIAL DISABILITY		PERMANENT TOTAL DISABILITY	
		CASES	COST	CASES	COST	CASES	COST
<b>INDUSTRY</b>	<b>\$250,779,145</b>	<b>13,639</b>	<b>\$59,067,148</b>	<b>1,712</b>	<b>\$3,109,906</b>	<b>655</b>	<b>\$15,955,797</b>
Natural Resources & Mining	\$5,370,996	238	\$942,402	23	\$18,191	19	\$335,027
Construction	\$31,787,446	1,437	\$9,490,479	96	\$222,451	51	\$1,414,761
Manufacturing	\$10,549,134	516	\$2,320,309	42	\$69,238	54	\$1,160,589
Wholesale Trade	\$8,515,051	495	\$1,954,155	50	\$87,495	7	\$143,150
Retail Trade	\$22,441,417	1,542	\$4,560,872	243	\$350,667	32	\$1,006,962
Transportation & Warehousing	\$22,009,835	1,332	\$5,926,118	279	\$425,616	15	\$346,079
Utilities	\$1,939,852	67	\$290,094	3	(\$793)	7	\$214,024
Information	\$3,972,853	197	\$952,649	36	\$87,082	23	\$566,388
Fin, Ins, Real Est, Rent, & Leasing	\$6,485,149	326	\$1,137,940	47	\$91,098	13	\$342,702
Professional, Scientific, & Tech.	\$3,179,221	122	\$558,155	17	\$35,484	9	\$199,924
Management of Companies & Entrpr.	\$1,268,215	57	\$220,744	16	\$35,075	14	\$391,776
Administrative, Support, & Waste	\$19,036,550	1,105	\$4,474,287	96	\$177,694	7	\$149,758
Educational Services	\$2,228,504	111	\$356,613	7	\$25,251	4	\$118,104
Health Care & Social Assistance	\$17,794,179	1,070	\$4,473,636	175	\$344,346	18	\$436,879
Arts, Entertainment, & Recreation	\$2,931,388	233	\$454,608	19	\$13,687	5	\$392,107
Accommodation and Food Services	\$27,561,146	2,070	\$6,025,122	277	\$471,945	28	\$526,808
Other Services, except Public Admin.	\$7,347,806	362	\$1,453,307	33	\$36,507	11	\$248,202
Public Administration	\$44,784,625	2,194	\$12,083,142	237	\$577,172	146	\$3,386,419
Other	\$11,575,778	165	\$1,392,516	16	\$41,700	192	\$4,576,138

Cost is rounded to the nearest whole dollar and may not add to total.



Back Cases: Cost and Days Lost by Nature of Injury and Illness	2004			2005		
	Cases With Cost	Cost	Days Lost	Cases With Cost	Cost	Days Lost
<b>Nature of Injury and Illness Total</b>	<b>7,930</b>	<b>\$67,349,938</b>	<b>312,506</b>	<b>7,602</b>	<b>\$61,319,055</b>	<b>273,807</b>
Sprain, Strain	4,623	\$36,354,613	163,838	4,459	\$31,781,691	145,968
Back Pain	2,436	\$20,050,984	106,868	2,244	\$19,132,863	94,370
Traumatic Injury	380	\$4,463,710	22,792	428	\$4,621,734	19,084
Dislocation	112	\$1,576,142	8,670	112	\$1,552,645	6,282
Bruises, Contusions	123	\$837,884	5,414	135	\$806,086	3,758
Fracture	45	\$839,798	1,710	44	\$795,911	3,085
Multiple Traumatic Injuries/Disorders	20	\$45,637	62	18	\$88,252	291
Musculoskeletal System & Connective Tissue	21	\$345,084	1,809	11	\$101,328	275
Other Injuries/Illnesses	41	\$407,917	1,090	33	\$205,212	690
Non-classifiable	129	\$2,428,169	253	118	\$2,233,333	4

The total number of back injury and illness cases with cost declined by 328 to 7,602 in 2005. Back injury cost decreased by 9.0% to \$61,319,055. Days lost for 2005 back cases decreased to 273,807 days from 312,506 days in 2004, a decrease of 12.4 percent.

The average cost per case was \$8,066 in 2005 compared to \$8,493 in 2004 decreasing by \$427. The nature category with the highest average cost per case in 2005 was fracture at \$18,089 decreasing \$573 from the previous year. The lowest average cost per case was in multiple traumatic injuries/disorders at \$4,903.

The sprains and strains category accounted for the highest cost in 2005 at \$31.8 million or 51.8 percent of total cost. Although the number of multiple traumatic injuries and disorders cases decreased, it had the highest percentage increase in costs and days lost standing at \$88,252 and 291 lost days. This may be due to the severity of the injuries. Musculoskeletal system and connective tissue cases cost and days lost experienced the highest percent decrease over the year. Cases with cost dropped 47.6% to 11 cases. Costs decreased 70.6% to \$101,328 and days lost decreased 84.8% to 275 days.

## PAYMENTS BY INDUSTRY

PERMANENT PARTIAL DISABILITY		DEATH		DISFIGUREMENT		VOCATIONAL REHABILITATION		ATTENDENT SERVICES		MEDICAL	
CASES	COST	CASES	COST	CASES	COST	CASES	COST	CASES	COST	CASES	COST
4,081	\$66,399,668	112	\$2,010,782	2,688	\$1,314,094	1,232	\$5,063,253	11	\$219,851	36,928	\$97,638,645
105	\$1,629,933	3	\$30,448	67	\$43,153	24	\$73,058	2	\$25,044	646	\$2,273,740
414	\$7,521,857	12	\$264,097	337	\$196,941	211	\$891,734	2	\$75,618	3,783	\$11,709,507
166	\$2,578,534	3	\$40,949	131	\$70,930	60	\$295,341	1	\$22,392	1,301	\$3,990,853
125	\$2,453,353	8	\$234,196	75	\$45,090	40	\$169,332	0	\$0	1,296	\$3,428,280
402	\$5,671,850	2	\$6,268	289	\$140,757	124	\$553,354	0	\$0	4,043	\$10,150,686
416	\$6,284,388	13	\$338,962	235	\$88,188	116	\$450,065	0	\$0	3,150	\$8,150,420
24	\$461,711	0	\$0	28	\$16,700	8	\$33,069	1	\$15,539	273	\$909,508
63	\$623,856	1	\$25,536	34	\$16,575	13	\$58,904	0	\$0	559	\$1,641,863
131	\$1,927,911	5	\$160,086	68	\$35,268	30	\$100,426	0	\$0	957	\$2,689,718
54	\$963,034	0	\$0	30	\$12,840	13	\$53,348	0	\$0	458	\$1,356,434
10	\$197,440	0	\$0	8	\$2,575	2	\$2,698	0	\$0	157	\$417,906
323	\$5,902,130	9	\$82,217	213	\$90,889	106	\$493,103	0	\$0	2,610	\$7,666,472
37	\$611,553	0	\$0	36	\$12,050	7	\$19,857	0	\$0	435	\$1,085,076
317	\$5,066,733	4	\$133,940	140	\$48,247	107	\$459,836	1	\$5,174	2,919	\$6,825,388
49	\$826,440	2	\$38,901	35	\$19,842	15	\$44,205	0	\$0	645	\$1,141,597
508	\$7,629,533	4	\$95,564	381	\$196,916	150	\$562,524	0	\$0	5,349	\$12,052,735
116	\$2,138,519	2	\$43,080	69	\$39,864	35	\$105,221	0	\$0	971	\$3,283,106
728	\$12,023,476	29	\$394,896	464	\$196,962	137	\$570,736	2	\$36,048	6,696	\$15,515,775
93	\$1,887,417	15	\$121,642	48	\$40,307	34	\$126,442	2	\$40,036	680	\$3,349,581

## 2005 HAWAII WORKERS' COMPENSATION STATISTICS

### PART OF BODY AFFECTED BY NATURE OF INJURY OR ILLNESS

Reported Cases	Part of Body	Eyes	Head, Neck, Excl. Eyes	Trunk, Excl. Back	Back	Fingers	Upper Extremity, Excl. Fingers	Lower Extremity	Body System	Multiple Body Parts	Non-classifiable
<b>Nature of Injury or Illness</b>	28,018	1,286	1,898	2,622	4,561	3,669	4,494	5,156	1,055	3,063	214
Traumatic Injuries	2,861	273	318	249	304	206	344	664	1	438	64
Fracture	791	0	70	72	15	178	161	277	0	17	1
Sprains, Strains	7,450	1	201	975	2,707	171	863	1,857	0	644	31
Cut, Laceration	3,638	51	527	10	6	1,872	800	340	0	29	3
Puncture, Excluding Bites	917	32	25	5	0	417	231	203	0	1	3
Abrasions, Scratches	355	99	32	7	2	15	75	80	0	44	1
Bruises, Contusions	2,064	46	198	278	98	214	328	643	0	253	6
Foreign Bodies	523	518	0	0	0	1	4	0	0	0	0
Heat Burns	689	27	43	20	2	51	432	69	0	41	4
Multiple Injuries/Disorders	1,023	7	79	24	12	42	83	139	0	633	4
Back Pain	1,361	0	0	0	1,361	0	0	0	0	0	0
Pain, Excluding Back	2,502	20	126	518	0	220	632	610	0	376	0
Carpal Tunnel	145	0	0	0	0	0	145	0	0	0	0
Musculoskeletal	120	0	1	19	3	6	71	17	0	3	0
Skin Disorders	166	0	11	4	2	6	80	9	1	46	7
Symptoms	361	29	36	43	1	1	7	1	223	18	2
Mental Disorders	411	0	0	0	0	0	0	0	411	0	0
Exposure	227	15	9	1	0	1	2	0	193	3	3
Other Injuries/Illnesses	2,347	167	221	397	47	268	236	244	222	516	29
Nonclassifiable	67	1	1	0	1	0	0	3	4	1	56

### EVENT OR EXPOSURE BY SOURCE OF INJURY OR ILLNESS

Reported Cases	Event or Exposure	Struck By or Struck Against	Caught In, Under, or Between	Rubbed or Abraded	Fall	Bodily Reaction	Over-exertion	Contact With Temp. Extremes	Exposure (Harmful Substance)	Highway Motor Vehicle Accidents	Other
<b>Source of Injury or Illness</b>	28,018	6,464	861	581	4,167	2,341	6,372	686	1,902	698	3,946
Chemical, Chemical Product	689	5	0	0	0	0	0	31	638	0	15
Containers	3,904	692	98	28	86	0	2,797	64	2	0	137
Furniture, Fixtures	1,420	615	65	7	144	0	523	3	2	0	61
Machinery	1,612	610	231	6	36	0	428	113	17	1	170
Building Materials	889	431	45	10	29	0	305	6	0	1	62
Vehicle, Mobile Eqmt Parts	262	79	25	0	6	0	136	1	1	1	13
Other Parts and Materials	909	582	29	7	14	0	168	15	2	0	92
Plants, Animals, Minerals	1,329	227	8	5	59	0	81	246	447	0	256
Person, Injured Worker	3,638	3	0	0	1	2,341	36	0	331	0	926
Person, Other	1,435	74	11	1	4	0	533	0	77	0	735
Floors, Walkways, Ground	3,625	40	3	12	3,500	0	2	0	0	0	68
Structures, Other Surfaces	843	459	98	2	116	0	113	2	0	0	53
Handtools (Nonpowered)	1,581	1,217	27	8	5	0	236	4	1	0	83
Handtools (Powered)	435	240	19	3	4	0	129	6	9	0	25
Other Tools, Instruments, Equipment	894	263	27	5	36	0	273	3	232	0	55
Highway Vehicle, Motorized	1,367	267	81	7	49	0	92	5	0	690	176
Nonpowered Plant, Vehicles	496	149	51	0	26	0	257	2	0	0	11
Other Vehicles	459	106	35	0	15	0	43	5	0	5	250
Scrap, Waste, Debris	933	321	1	463	13	0	29	5	37	0	64
Other Sources	1,298	84	7	17	24	0	191	175	106	0	694

**2005 HAWAII WORKERS' COMPENSATION STATISTICS**

<b>STATE</b>	<b>REPORTED</b>		<b>PROCESSED</b>		<b>WITH COST</b>		<b>COST</b>		<b>DAYS LOST</b>	
<b>ISLAND</b>	<b>28,018</b>	<b>100.0%</b>	<b>52,458</b>	<b>100.0%</b>	<b>39,889</b>	<b>100.0%</b>	<b>\$250,779,145</b>	<b>100.0%</b>	<b>1,094,172</b>	<b>100.0%</b>
Oahu	18,299	65.3	34,355	65.5	25,792	64.7	165,205,370	65.9	718,229	65.6
East Hawaii	1,646	5.9	3,502	6.7	2,677	6.7	18,087,559	7.2	77,424	7.1
West Hawaii	2,190	7.8	4,012	7.7	3,136	7.9	19,983,324	8.0	96,623	8.8
Maui	3,972	14.2	7,139	13.6	5,572	14.0	32,724,664	13.1	131,944	12.1
Molokai	118	0.4	219	0.4	168	0.4	971,801	0.4	4,144	0.4
Lanai	168	0.6	246	0.5	213	0.5	768,069	0.3	4,083	0.4
Kauai	1,625	5.8	2,985	5.7	2,331	5.8	13,038,358	5.2	61,725	5.6
<b>INDUSTRY</b>	<b>28,018</b>	<b>100.0%</b>	<b>52,458</b>	<b>100.0%</b>	<b>39,889</b>	<b>100.0%</b>	<b>\$250,779,145</b>	<b>100.0%</b>	<b>1,094,172</b>	<b>100.0%</b>
Natural Resources & Mining	417	1.5	887	1.7	713	1.8	5,370,996	2.1	21,148	1.9
Construction	2,905	10.4	4,912	9.4	4,038	10.1	31,787,446	12.7	139,208	12.7
Manufacturing	920	3.3	1,749	3.3	1,428	3.6	10,549,134	4.2	44,536	4.1
Wholesale Trade	1,045	3.7	1,753	3.3	1,384	3.5	8,515,051	3.4	34,743	3.2
Retail Trade	3,137	11.2	5,566	10.6	4,327	10.9	22,441,417	9.0	106,060	9.7
Transportation & Warehousing	2,303	8.2	4,331	8.3	3,411	8.6	22,009,835	8.8	101,810	9.3
Utilities	167	0.6	385	0.7	293	0.7	1,939,852	0.8	3,658	0.3
Information	467	1.7	831	1.6	601	1.5	3,972,853	1.6	13,791	1.3
Fin, Ins, Real Est, Rent, & Leasing	726	2.6	1,377	2.6	1,032	2.6	6,485,149	2.6	23,497	2.2
Professional, Scientific, & Tech.	390	1.4	668	1.3	481	1.2	3,179,221	1.3	9,334	0.9
Management of Companies & Entrpr.	136	0.5	212	0.4	170	0.4	1,268,215	0.5	4,161	0.4
Administrative, Support, & Waste	2,233	8.0	3,712	7.1	2,831	7.1	19,036,550	7.6	93,963	8.6
Educational Services	371	1.3	625	1.2	464	1.2	2,228,504	0.9	7,250	0.7
Health Care & Social Assistance	2,211	7.9	4,177	8.0	3,100	7.8	17,794,179	7.1	87,098	8.0
Arts, Entertainment, & Recreation	533	1.9	848	1.6	688	1.7	2,931,388	1.2	10,769	1.0
Accommodation and Food Services	4,503	16.1	7,390	14.1	5,718	14.3	27,561,146	11.0	134,361	12.3
Other Services, except Public Admin.	818	2.9	1,332	2.5	1,027	2.6	7,347,806	2.9	31,655	2.9
Public Administration	4,566	16.3	10,639	20.3	7,327	18.4	44,784,625	17.9	204,292	18.7
Other	170	0.6	1,064	2.0	856	2.2	11,575,778	4.6	22,838	2.1
<b>TYPE OF INSURANCE</b>	<b>28,018</b>	<b>100.0%</b>	<b>52,458</b>	<b>100.0%</b>	<b>39,889</b>	<b>100.0%</b>	<b>\$250,779,145</b>	<b>100.0%</b>	<b>1,094,172</b>	<b>100.0%</b>
Carrier	19,752	70.5	34,679	66.1	26,867	67.4	160,117,860	63.9	704,670	64.4
Self-Insured: Private & Captive	4,114	14.7	7,947	15.2	6,335	15.9	36,214,700	14.4	192,922	17.6
Self-Insured: Government	4,152	14.8	9,832	18.7	6,687	16.8	38,680,862	15.4	196,580	18.0
State of Hawaii	2,041	7.3	5,417	10.3	3,637	9.1	21,392,815	8.5	121,326	11.1
City & County of Honolulu	1,543	5.5	2,991	5.7	1,989	5.0	11,401,922	4.6	45,637	4.2
Hawaii County	236	0.8	701	1.3	475	1.2	2,714,968	1.1	15,984	1.5
Maui County	206	0.7	489	0.9	408	1.0	2,371,771	1.0	9,781	0.9
Kauai County	126	0.5	234	0.5	178	0.5	799,386	0.3	3,852	0.4
Special Compensation Fund	INA	--	INA	--	INA	--	15,765,723	6.3	INA	--
<b>OCCUPATION</b>	<b>28,018</b>	<b>100.0%</b>	<b>52,458</b>	<b>100.0%</b>	<b>39,889</b>	<b>100.0%</b>	<b>\$250,779,145</b>	<b>100.0%</b>	<b>1,094,172</b>	<b>100.0%</b>
Executive, Admin. & Managerial	773	2.8	1,557	3.0	1,142	2.9	8,369,509	3.3	25,027	2.3
Professional Specialty	1,862	6.7	3,730	7.1	2,560	6.4	15,248,442	6.1	46,662	4.3
Technical Support	608	2.2	1,222	2.3	911	2.3	5,776,393	2.3	23,642	2.2
Sales	1,933	6.9	3,461	6.6	2,620	6.6	16,593,871	6.6	74,158	6.8
Administrative Support	1,996	7.1	4,293	8.2	2,994	7.5	16,867,234	6.7	76,121	7.0
Services	8,130	29.0	14,737	28.1	10,966	27.5	60,824,951	24.3	308,385	28.2
Agricultural, Forestry & Fishing	1,252	4.5	2,352	4.5	1,816	4.6	10,927,837	4.4	50,743	4.6
Mechanic, Repairer	1,702	6.1	3,071	5.9	2,380	6.0	15,561,697	6.2	56,440	5.2
Construction Trades	2,312	8.3	4,149	7.9	3,388	8.5	26,583,491	10.6	114,526	10.5
Precision Production	351	1.3	730	1.4	569	1.4	3,561,150	1.4	13,246	1.2
Operator, Fabricator, Inspector	581	2.1	1,087	2.1	894	2.2	5,488,326	2.2	23,251	2.1
Transportation, Material Moving	1,980	7.1	3,936	7.5	3,132	7.9	23,472,961	9.4	107,233	9.8
Handler, Helper, Laborer	4,303	15.4	7,387	14.1	5,926	14.9	33,577,216	13.4	166,554	15.2
Nonclassifiable	235	0.8	746	1.4	591	1.5	7,926,067	3.2	8,184	0.8
<b>SEX</b>	<b>28,018</b>	<b>100.0%</b>	<b>52,458</b>	<b>100.0%</b>	<b>39,889</b>	<b>100.0%</b>	<b>\$250,779,145</b>	<b>100.0%</b>	<b>1,094,172</b>	<b>100.0%</b>
Male	17,822	63.6	32,445	61.9	25,098	62.9	162,933,169	65.0	671,912	61.4
Female	10,196	36.4	20,013	38.2	14,791	37.1	87,845,976	35.0	422,260	38.6

Notes: Cost and percent totals may not add due to rounding.

**2005 HAWAII WORKERS' COMPENSATION STATISTICS**

<b>STATE</b>	<b>REPORTED</b>		<b>PROCESSED</b>		<b>WITH COST</b>		<b>COST</b>		<b>DAYS LOST</b>	
<b>PART OF BODY</b>	<b>28,018</b>	<b>100.0%</b>	<b>52,458</b>	<b>100.0%</b>	<b>39,889</b>	<b>100.0%</b>	<b>\$250,779,145</b>	<b>100.0%</b>	<b>1,094,172</b>	<b>100.0%</b>
Ears	83	0.3	226	0.4	116	0.3	373,627	0.2	661	0.1
Face, Excluding Eyes, Ears	738	2.6	1,118	2.1	813	2.0	1,808,304	0.7	6,287	0.6
Eyes	1,286	4.6	1,698	3.2	1,313	3.3	1,144,587	0.5	3,168	0.3
Head, Excluding Ears, Face, Eyes	703	2.5	1,170	2.2	900	2.3	5,318,742	2.1	16,042	1.5
Neck	374	1.3	796	1.5	597	1.5	4,966,796	2.0	20,647	1.9
Trunk, Excluding Back	2,622	9.4	5,252	10.0	3,997	10.0	32,736,511	13.1	155,785	14.2
<i>Shoulder</i>	<i>1,189</i>	<i>4.2</i>	<i>2,569</i>	<i>4.9</i>	<i>2,031</i>	<i>5.1</i>	<i>19,481,783</i>	<i>7.8</i>	<i>94,845</i>	<i>8.7</i>
<i>Chest</i>	<i>535</i>	<i>1.9</i>	<i>940</i>	<i>1.8</i>	<i>619</i>	<i>1.6</i>	<i>2,675,648</i>	<i>1.1</i>	<i>10,266</i>	<i>0.9</i>
<i>Abdomen</i>	<i>147</i>	<i>0.5</i>	<i>246</i>	<i>0.5</i>	<i>177</i>	<i>0.4</i>	<i>764,464</i>	<i>0.3</i>	<i>6,028</i>	<i>0.6</i>
<i>Pelvic Region</i>	<i>326</i>	<i>1.2</i>	<i>612</i>	<i>1.2</i>	<i>467</i>	<i>1.2</i>	<i>3,555,130</i>	<i>1.4</i>	<i>15,104</i>	<i>1.4</i>
<i>Trunk, Multiple/Unspecified</i>	<i>425</i>	<i>1.5</i>	<i>885</i>	<i>1.7</i>	<i>703</i>	<i>1.8</i>	<i>6,259,486</i>	<i>2.5</i>	<i>29,542</i>	<i>2.7</i>
Back (Spine/Spinal Cord)	4,561	16.3	9,520	18.2	7,602	19.1	61,319,055	24.5	273,807	25.0
Arms	1,397	5.0	2,451	4.7	1,894	4.8	8,521,958	3.4	41,864	3.8
Wrists	1,051	3.8	2,135	4.1	1,602	4.0	9,091,692	3.6	44,792	4.1
Hands, Excluding Fingers	1,500	5.4	2,337	4.5	1,758	4.4	5,112,496	2.0	23,839	2.2
Fingers	3,669	13.1	5,605	10.7	4,439	11.1	9,178,349	3.7	34,966	3.2
Upper Extremities, Multiple	546	2.0	1,127	2.2	810	2.0	4,492,622	1.8	21,286	2.0
Legs	2,635	9.4	5,069	9.7	3,907	9.8	26,805,012	10.7	113,186	10.3
Ankles	1,186	4.2	1,864	3.6	1,492	3.7	6,056,449	2.4	30,191	2.8
Feet, Excl. Toes	796	2.8	1,321	2.5	1,016	2.6	3,957,682	1.6	17,801	1.6
Toes	313	1.1	489	0.9	381	1.0	546,403	0.2	3,538	0.3
Lower Extremities, Multiple	226	0.8	462	0.9	359	0.9	2,677,483	1.1	11,069	1.0
Body Systems	1,055	3.8	2,195	4.2	975	2.4	8,370,832	3.3	38,364	3.5
Multiple Body Parts	3,063	10.9	7,087	13.5	5,532	13.9	53,720,136	21.4	229,100	20.9
Nonclassifiable	214	0.8	536	1.0	386	1.0	4,580,409	1.8	7,779	0.7
<b>AVERAGE WEEKLY WAGE</b>	<b>28,018</b>	<b>100.0%</b>	<b>52,458</b>	<b>100.0%</b>	<b>39,889</b>	<b>100.0%</b>	<b>\$250,779,145</b>	<b>100.0%</b>	<b>1,094,172</b>	<b>100.0%</b>
\$ .01-\$200	1,226	4.4	2,328	4.4	1,736	4.4	10,113,473	4.0	40,595	3.7
\$200.01-\$400	4,474	16.0	8,117	15.5	6,450	16.2	35,443,557	14.1	170,907	15.6
\$400.01-\$600	5,906	21.1	11,366	21.7	8,832	22.1	54,507,081	21.7	270,434	24.7
\$600.01-\$800	3,929	14.0	7,317	14.0	5,552	13.9	35,785,915	14.3	152,759	14.0
\$800.01-\$1000	2,264	8.1	4,219	8.0	3,201	8.0	23,295,430	9.3	97,255	8.9
Over \$1000	2,650	9.5	4,581	8.7	3,434	8.6	23,454,626	9.4	82,420	7.5
Information Not Available	7,569	27.0	14,530	27.7	10,684	26.8	68,179,063	27.2	279,802	25.6
<b>SOURCE OF INJURY OR ILLNESS</b>	<b>28,018</b>	<b>100.0%</b>	<b>52,458</b>	<b>100.0%</b>	<b>39,889</b>	<b>100.0%</b>	<b>\$250,779,145</b>	<b>100.0%</b>	<b>1,094,172</b>	<b>100.0%</b>
Chemical, Chemical Product	689	2.5	998	1.9	654	1.6	1,180,199	0.5	3,932	0.4
Containers	3,904	13.9	7,231	13.8	5,793	14.5	34,022,581	13.6	169,524	15.5
Furniture, Fixtures	1,420	5.1	2,513	4.8	1,952	4.9	10,911,295	4.4	52,716	4.8
Machinery	1,612	5.8	2,806	5.4	2,250	5.6	13,335,779	5.3	51,807	4.7
Building Materials	889	3.2	1,565	3.0	1,300	3.3	8,050,321	3.2	35,815	3.3
Vehicle, Mobile Equipment Parts	262	0.9	473	0.9	396	1.0	2,804,223	1.1	13,777	1.3
Other Parts and Materials	909	3.2	1,527	2.9	1,207	3.0	5,800,394	2.3	23,667	2.2
Plants, Animals, Minerals	1,329	4.7	2,049	3.9	1,441	3.6	4,183,082	1.7	17,437	1.6
Person, Injured Worker	3,638	13.0	7,946	15.2	5,468	13.7	40,009,322	16.0	187,366	17.1
Person, Other than Injured Worker	1,435	5.1	2,870	5.5	2,060	5.2	13,402,962	5.3	69,911	6.4
Floors, Walkways, Ground	3,625	12.9	7,349	14.0	5,847	14.7	49,899,741	19.9	213,368	19.5
Structures, Other Surfaces	843	3.0	1,417	2.7	1,101	2.8	5,816,849	2.3	26,720	2.4
Handtools (Nonpowered)	1,581	5.6	2,457	4.7	1,973	5.0	5,652,946	2.3	23,091	2.1
Handtools (Powered)	435	1.6	676	1.3	556	1.4	2,613,242	1.0	11,751	1.1
Other Tools, Instruments, Equipment	894	3.2	1,542	2.9	1,179	3.0	5,296,029	2.1	21,171	1.9
Highway Vehicle, Motorized	1,367	4.9	2,896	5.5	2,244	5.6	18,732,207	7.5	72,820	6.7
Nonpowered Plant Vehicles	496	1.8	900	1.7	736	1.9	4,215,294	1.7	20,434	1.9
Other Vehicles	459	1.6	876	1.7	719	1.8	5,557,979	2.2	21,355	2.0
Scrap, Waste, Debris	933	3.3	1,300	2.5	1,003	2.5	1,540,635	0.6	5,882	0.5
Other Sources	1,298	4.6	3,067	5.9	2,010	5.0	17,754,065	7.1	51,628	4.7
<b>MARITAL STATUS</b>	<b>28,018</b>	<b>100.0%</b>	<b>52,458</b>	<b>100.0%</b>	<b>39,889</b>	<b>100.0%</b>	<b>\$250,779,145</b>	<b>100.0%</b>	<b>1,094,172</b>	<b>100.0%</b>
Married	12,943	46.2	25,955	49.5	19,851	49.8	137,893,438	55.0	576,814	52.7
Single	13,987	49.9	24,550	46.8	18,650	46.8	103,946,913	41.5	489,129	44.7
Information Not Available	1,088	3.9	1,953	3.7	1,388	3.5	8,938,794	3.6	28,229	2.6

Notes: Cost and percent totals may not add due to rounding.

## 2005 HAWAII WORKERS' COMPENSATION STATISTICS

STATE	REPORTED		PROCESSED		WITH COST		COST		DAYS LOST	
	28,018	100.0%	52,458	100.0%	39,889	100.0%	\$250,779,145	100.0%	1,094,172	100.0%
<b>EVENT OR EXPOSURE</b>	<b>28,018</b>	<b>100.0%</b>	<b>52,458</b>	<b>100.0%</b>	<b>39,889</b>	<b>100.0%</b>	<b>\$250,779,145</b>	<b>100.0%</b>	<b>1,094,172</b>	<b>100.0%</b>
Struck Against	2,163	7.7	3,221	6.1	2,520	6.3	6,615,272	2.6	25,364	2.3
Struck By	4,301	15.4	6,760	12.9	5,408	13.6	17,840,309	7.1	69,838	6.4
Caught In, Under, or Between	861	3.1	1,403	2.7	1,125	2.8	4,930,557	2.0	19,731	1.8
Rubbed or Abraded	581	2.1	761	1.5	576	1.4	931,284	0.4	3,427	0.3
Other Contact with Object, Equipment	654	2.3	1,143	2.2	901	2.3	2,189,183	0.9	7,507	0.7
Falls (From Elevation)	1,427	5.1	2,984	5.7	2,434	6.1	23,165,209	9.2	97,833	8.9
Falls (To Same Level)	2,598	9.3	5,007	9.5	3,950	9.9	29,386,229	11.7	126,505	11.6
Falls (Other)	142	0.5	324	0.6	253	0.6	2,038,421	0.8	9,267	0.9
Bodily Reaction	2,341	8.4	4,467	8.5	3,384	8.5	20,864,432	8.3	96,108	8.8
Overexertion	6,372	22.7	13,077	24.9	10,510	26.4	79,839,384	31.8	389,996	35.6
Repetitive Motion	844	3.0	2,244	4.3	1,528	3.8	11,694,353	4.7	60,979	5.6
Heart Attacks and Strokes	36	0.1	111	0.2	37	0.1	1,317,716	0.5	808	0.1
Contact (Electrical)	58	0.2	112	0.2	87	0.2	996,542	0.4	2,584	0.2
Contact (Temperature Extremes)	686	2.5	1,047	2.0	775	1.9	1,033,313	0.4	4,963	0.5
Exposure (Noise)	29	0.1	120	0.2	52	0.1	184,019	0.1	29	0.0
Exposure (Harmful Substance)	1,902	6.8	3,079	5.9	1,702	4.3	5,275,689	2.1	29,614	2.7
Accidents (Highway Vehicle)	698	2.5	1,573	3.0	1,195	3.0	11,299,952	4.5	42,662	3.9
Accidents (Non-Highway Vehicle)	222	0.8	455	0.9	361	0.9	3,074,781	1.2	11,719	1.1
Accidents (Other Transportation)	215	0.8	504	1.0	405	1.0	4,407,753	1.8	16,536	1.5
Explosions	27	0.1	42	0.1	29	0.1	311,551	0.1	817	0.1
Assaults, Violent Acts	1,126	4.0	2,073	4.0	1,439	3.6	8,525,655	3.4	43,183	4.0
Other Events/Exposures	171	0.6	482	0.9	314	0.8	3,609,987	1.4	13,285	1.2
Nonclassifiable	564	2.0	1,469	2.8	904	2.3	11,247,554	4.5	21,417	2.0
<b>NATURE OF INJURY OR ILLNESS</b>	<b>28,018</b>	<b>100.0%</b>	<b>52,458</b>	<b>100.0%</b>	<b>39,889</b>	<b>100.0%</b>	<b>\$250,779,145</b>	<b>100.0%</b>	<b>1,094,172</b>	<b>100.0%</b>
Traumatic Injuries	2,861	10.2	5,013	9.6	3,782	9.5	26,049,323	10.4	120,131	11.0
Fracture	791	2.8	1,743	3.3	1,452	3.6	15,299,174	6.1	59,065	5.4
Sprains, Strains	7,450	26.6	14,796	28.2	11,834	29.7	80,653,213	32.2	370,866	33.9
Cut, Laceration	3,638	13.0	5,354	10.2	4,301	10.8	7,273,269	2.9	23,733	2.2
Puncture, Excluding Bites	917	3.3	1,272	2.4	987	2.5	1,280,943	0.5	4,746	0.4
Abrasions, Scratches	355	1.3	541	1.0	378	1.0	686,383	0.3	2,773	0.3
Bruises, Contusions	2,064	7.4	3,373	6.4	2,633	6.6	10,682,643	4.3	43,233	4.0
Foreign Bodies	523	1.9	662	1.3	520	1.3	337,302	0.1	570	0.1
Heat Burns	689	2.5	1,032	2.0	765	1.9	1,419,125	0.6	5,153	0.5
Multiple Injuries/Disorders	1,023	3.7	2,295	4.4	1,857	4.7	17,516,309	7.0	68,121	6.2
Back Pain	1,361	4.9	2,878	5.5	2,244	5.6	19,132,863	7.6	94,370	8.6
Pain, Excluding Back	2,502	8.9	5,287	10.1	3,866	9.7	27,758,590	11.1	140,038	12.8
Carpal Tunnel	145	0.5	409	0.8	258	0.7	2,426,634	1.0	12,136	1.1
Musculoskeletal	120	0.4	374	0.7	262	0.7	1,684,131	0.7	9,227	0.8
Skin Disorders	166	0.6	278	0.5	184	0.5	298,280	0.1	2,328	0.2
Symptoms	361	1.3	550	1.1	219	0.6	835,286	0.3	2,623	0.2
Mental Disorders	411	1.5	1,049	2.0	430	1.1	5,222,619	2.1	32,234	3.0
Exposure	227	0.8	294	0.6	94	0.2	56,106	0.0	21	0.0
Other Injuries/Illnesses	2,347	8.4	4,611	8.8	3,300	8.3	23,195,346	9.3	96,561	8.8
Nonclassifiable	67	0.2	647	1.2	523	1.3	8,971,606	3.6	6,243	0.6
<b>AGE</b>	<b>28,018</b>	<b>100.0%</b>	<b>52,458</b>	<b>100.0%</b>	<b>39,889</b>	<b>100.0%</b>	<b>\$250,779,145</b>	<b>100.0%</b>	<b>1,094,172</b>	<b>100.0%</b>
Under 18	196	0.7	267	0.5	175	0.4	342,331	0.1	1,741	0.2
18-24	3,766	13.4	5,587	10.7	4,284	10.7	11,405,677	4.6	58,293	5.3
25-34	6,401	22.9	11,089	21.1	8,429	21.1	44,285,863	17.7	204,701	18.7
35-44	6,860	24.5	13,763	26.2	10,530	26.4	74,690,263	29.8	317,005	29.0
45-54	6,698	23.9	13,641	26.0	10,357	26.0	75,839,517	30.2	332,078	30.4
55-64	3,300	11.8	6,628	12.6	5,046	12.7	36,621,186	14.6	148,728	13.6
Over 64	640	2.3	1,100	2.1	819	2.1	4,503,743	1.8	21,827	2.0
Information Not Available	157	0.6	383	0.7	249	0.6	3,090,565	1.2	9,799	0.9

Notes: Cost and percent totals may not add due to rounding.

**2005 HAWAII WORKERS' COMPENSATION STATISTICS**

<b>OAHU</b>	<b>REPORTED</b>		<b>PROCESSED</b>		<b>WITH COST</b>		<b>COST</b>		<b>DAYS LOST</b>	
<b>INDUSTRY</b>	<b>18,299</b>	<b>100.0%</b>	<b>34,355</b>	<b>100.0%</b>	<b>25,792</b>	<b>100.0%</b>	<b>\$165,205,370</b>	<b>100.0%</b>	<b>718,229</b>	<b>100.0%</b>
Natural Resources & Mining	112	0.6	241	0.7	197	0.8	1,825,942	1.1	6,086	0.9
Construction	1,863	10.2	3,145	9.2	2,593	10.1	20,350,863	12.3	87,810	12.2
Manufacturing	731	4.0	1,349	3.9	1,095	4.3	7,721,798	4.7	33,669	4.7
Wholesale Trade	780	4.3	1,297	3.8	1,021	4.0	6,896,358	4.2	27,462	3.8
Retail Trade	2,035	11.1	3,626	10.6	2,787	10.8	14,378,514	8.7	66,527	9.3
Transportation & Warehousing	1,733	9.5	3,260	9.5	2,542	9.9	17,049,996	10.3	78,447	10.9
Utilities	96	0.5	232	0.7	181	0.7	1,171,794	0.7	2,650	0.4
Information	398	2.2	692	2.0	501	1.9	3,361,455	2.0	11,903	1.7
Fin, Ins, Real Est, Rent, & Leasing	459	2.5	892	2.6	655	2.5	4,067,536	2.5	15,327	2.1
Professional, Scientific, & Tech.	278	1.5	450	1.3	318	1.2	1,997,354	1.2	5,940	0.8
Management of Companies & Entrpr.	91	0.5	140	0.4	110	0.4	819,759	0.5	2,421	0.3
Administrative, Support, & Waste	1,399	7.7	2,363	6.9	1,793	7.0	11,611,893	7.0	55,026	7.7
Educational Services	297	1.6	496	1.4	365	1.4	1,707,805	1.0	5,691	0.8
Health Care & Social Assistance	1,646	9.0	3,221	9.4	2,395	9.3	13,569,196	8.2	70,265	9.8
Arts, Entertainment, & Recreation	316	1.7	484	1.4	390	1.5	1,763,072	1.1	5,770	0.8
Accommodation and Food Services	2,333	12.8	3,867	11.3	2,983	11.6	15,336,397	9.3	76,664	10.7
Other Services, except Public Admin.	571	3.1	942	2.7	726	2.8	5,280,365	3.2	23,347	3.3
Public Administration	3,017	16.5	6,915	20.1	4,535	17.6	28,425,215	17.2	127,413	17.7
Other	144	0.8	743	2.2	605	2.4	7,870,058	4.8	15,811	2.2
<b>PART OF BODY</b>	<b>18,299</b>	<b>100.0%</b>	<b>34,355</b>	<b>100.0%</b>	<b>25,792</b>	<b>100.0%</b>	<b>\$165,205,370</b>	<b>100.0%</b>	<b>718,229</b>	<b>100.0%</b>
Ears	52	0.3	151	0.4	78	0.3	259,360	0.2	617	0.1
Face, Excluding Eyes, Ears	481	2.6	720	2.1	499	1.9	1,185,126	0.7	4,404	0.6
Eyes	811	4.4	1,095	3.2	850	3.3	657,979	0.4	1,607	0.2
Head, Excluding Ears, Face, Eyes	472	2.6	780	2.3	594	2.3	3,464,707	2.1	9,902	1.4
Neck	237	1.3	520	1.5	390	1.5	3,501,154	2.1	14,867	2.1
Trunk, Excluding Back	1,668	9.1	3,400	9.9	2,574	10.0	22,085,367	13.4	101,052	14.1
Back (Spine/Spinal Cord)	2,901	15.9	6,034	17.6	4,777	18.5	39,906,866	24.2	177,114	24.7
Arms	915	5.0	1,616	4.7	1,231	4.8	6,123,095	3.7	29,898	4.2
Wrists	700	3.8	1,431	4.2	1,061	4.1	5,819,637	3.5	30,523	4.3
Hands, Excluding Fingers	992	5.4	1,553	4.5	1,153	4.5	3,303,459	2.0	15,277	2.1
Fingers	2,417	13.2	3,719	10.8	2,919	11.3	6,000,913	3.6	24,015	3.3
Upper Extremities, Multiple	369	2.0	779	2.3	541	2.1	2,998,918	1.8	13,214	1.8
Legs	1,726	9.4	3,334	9.7	2,531	9.8	17,674,444	10.7	74,036	10.3
Ankles	753	4.1	1,195	3.5	948	3.7	3,735,336	2.3	17,741	2.5
Feet, Excluding Toes	563	3.1	914	2.7	689	2.7	2,516,115	1.5	10,679	1.5
Toes	216	1.2	338	1.0	259	1.0	342,634	0.2	2,433	0.3
Lower Extremities, Multiple	141	0.8	306	0.9	231	0.9	1,839,658	1.1	6,969	1.0
Body Systems	714	3.9	1,449	4.2	628	2.4	5,832,575	3.5	28,372	4.0
Multiple Body Parts	1,998	10.9	4,596	13.4	3,532	13.7	34,384,258	20.8	147,922	20.6
Nonclassifiable	173	1.0	425	1.2	307	1.2	3,573,769	2.2	7,587	1.1
<b>SOURCE OF INJURY OR ILLNESS</b>	<b>18,299</b>	<b>100.0%</b>	<b>34,355</b>	<b>100.0%</b>	<b>25,792</b>	<b>100.0%</b>	<b>\$165,205,370</b>	<b>100.0%</b>	<b>718,229</b>	<b>100.0%</b>
Chemical, Chemical Product	445	2.4	641	1.9	400	1.6	698,181	0.4	2,197	0.3
Containers	2,540	13.9	4,676	13.6	3,729	14.5	22,287,335	13.5	109,663	15.3
Furniture, Fixtures	921	5.0	1,628	4.7	1,238	4.8	7,063,906	4.3	36,629	5.1
Machinery	1,048	5.7	1,796	5.2	1,451	5.6	8,840,816	5.4	34,891	4.9
Building Materials	588	3.2	1,029	3.0	847	3.3	5,333,197	3.2	25,086	3.5
Vehicle, Mobile Equipment Parts	180	1.0	304	0.9	249	1.0	1,683,908	1.0	7,547	1.1
Other Parts and Materials	586	3.2	979	2.9	765	3.0	3,608,863	2.2	14,927	2.1
Plants, Animals, Minerals	780	4.3	1,214	3.5	798	3.1	2,489,407	1.5	10,641	1.5
Person, Injured Worker	2,393	13.1	5,290	15.4	3,599	14.0	27,208,174	16.5	124,005	17.3
Person, Other than Injured Worker	1,000	5.5	1,996	5.8	1,405	5.5	9,029,745	5.5	49,359	6.9
Floors, Walkways, Ground	2,347	12.8	4,768	13.9	3,727	14.5	32,092,924	19.4	136,492	19.0
Structures, Other Surfaces	555	3.0	948	2.8	717	2.8	3,987,973	2.4	16,809	2.3
Handtools (Nonpowered)	995	5.4	1,531	4.5	1,225	4.8	3,406,366	2.1	13,724	1.9
Handtools (Powered)	280	1.5	429	1.3	340	1.3	1,594,940	1.0	7,280	1.0
Other Tools, Instruments, Equipment	607	3.3	1,065	3.1	797	3.1	3,747,555	2.3	14,711	2.1
Highway Vehicle, Motorized	951	5.2	1,962	5.7	1,522	5.9	12,990,405	7.9	49,174	6.9
Nonpowered Plant Vehicles	340	1.9	630	1.8	522	2.0	3,071,745	1.9	14,213	2.0
Other Vehicles	308	1.7	580	1.7	467	1.8	3,419,572	2.1	13,693	1.9
Scrap, Waste, Debris	607	3.3	857	2.5	666	2.6	838,227	0.5	3,797	0.5
Other Sources	828	4.5	2,032	5.9	1,328	5.2	11,812,131	7.2	33,391	4.7

Notes: Cost and percent totals may not add due to rounding.

**2005 HAWAII WORKERS' COMPENSATION STATISTICS**

<b>OAHU</b>	<b>REPORTED</b>		<b>PROCESSED</b>		<b>WITH COST</b>		<b>COST</b>		<b>DAYS LOST</b>	
<b>OCCUPATION</b>	<b>18,299</b>	<b>100.0%</b>	<b>34,355</b>	<b>100.0%</b>	<b>25,792</b>	<b>100.0%</b>	<b>\$165,205,370</b>	<b>100.0%</b>	<b>718,229</b>	<b>100.0%</b>
Executive, Admin. & Managerial	514	2.8	1,037	3.0	747	2.9	5,581,994	3.4	16,992	2.4
Professional Specialty	1,312	7.2	2,644	7.7	1,747	6.8	10,185,713	6.2	32,546	4.5
Technical Support	374	2.0	774	2.3	562	2.2	3,662,863	2.2	16,960	2.4
Sales	1,261	6.9	2,259	6.6	1,683	6.5	11,093,861	6.7	47,715	6.6
Administrative Support	1,403	7.7	3,040	8.9	2,067	8.0	11,485,576	7.0	51,658	7.2
Services	5,121	28.0	9,386	27.3	6,877	26.7	39,812,128	24.1	201,148	28.0
Agricultural, Forestry & Fishing	581	3.2	1,117	3.3	838	3.3	5,920,356	3.6	24,958	3.5
Mechanic, Repairer	1,165	6.4	2,021	5.9	1,566	6.1	10,389,713	6.3	36,758	5.1
Construction Trades	1,513	8.3	2,708	7.9	2,215	8.6	16,897,823	10.2	74,492	10.4
Precision Production	244	1.3	493	1.4	386	1.5	2,367,300	1.4	9,628	1.3
Operator, Fabricator, Inspector	413	2.3	753	2.2	620	2.4	3,682,899	2.2	15,353	2.1
Transportation, Material Moving	1,371	7.5	2,684	7.8	2,119	8.2	16,211,627	9.8	77,712	10.8
Handler, Helper, Laborer	2,884	15.8	4,947	14.4	3,975	15.4	22,682,700	13.7	107,735	15.0
Nonclassifiable	143	0.8	492	1.4	390	1.5	5,230,817	3.2	4,574	0.6
<b>NATURE OF INJURY OR ILLNESS</b>	<b>18,299</b>	<b>100.0%</b>	<b>34,355</b>	<b>100.0%</b>	<b>25,792</b>	<b>100.0%</b>	<b>\$165,205,370</b>	<b>100.0%</b>	<b>718,229</b>	<b>100.0%</b>
Traumatic Injuries	1,836	10.0	3,206	9.3	2,405	9.3	17,077,891	10.3	77,330	10.8
Fracture	501	2.7	1,120	3.3	916	3.6	9,228,750	5.6	35,205	4.9
Sprains, Strains	4,821	26.4	9,576	27.9	7,611	29.5	52,776,573	32.0	242,326	33.7
Cut, Laceration	2,372	13.0	3,491	10.2	2,768	10.7	4,636,019	2.8	15,301	2.1
Puncture, Excluding Bites	605	3.3	842	2.5	643	2.5	720,069	0.4	3,093	0.4
Abrasions, Scratches	256	1.4	375	1.1	257	1.0	517,084	0.3	1,857	0.3
Bruises, Contusions	1,339	7.3	2,197	6.4	1,683	6.5	6,438,767	3.9	27,656	3.9
Foreign Bodies	339	1.9	435	1.3	353	1.4	168,572	0.1	410	0.1
Heat Burns	453	2.5	670	2.0	497	1.9	810,217	0.5	3,129	0.4
Multiple Injuries/Disorders	635	3.5	1,450	4.2	1,157	4.5	11,045,703	6.7	40,438	5.6
Back Pain	879	4.8	1,840	5.4	1,424	5.5	12,550,983	7.6	62,349	8.7
Pain, Excluding Back	1,708	9.3	3,676	10.7	2,634	10.2	19,282,839	11.7	97,790	13.6
Carpal Tunnel	98	0.5	283	0.8	180	0.7	1,698,093	1.0	9,006	1.3
Musculoskeletal	91	0.5	274	0.8	188	0.7	1,159,916	0.7	5,715	0.8
Skin Disorders	110	0.6	177	0.5	113	0.4	205,485	0.1	1,286	0.2
Symptoms	230	1.3	359	1.0	140	0.5	523,665	0.3	1,599	0.2
Mental Disorders	259	1.4	677	2.0	293	1.1	4,024,879	2.4	24,160	3.4
Exposure	191	1.0	240	0.7	58	0.2	14,887	0.0	19	0.0
Other Injuries/Illnesses	1,529	8.4	3,003	8.7	2,098	8.1	15,506,388	9.4	64,497	9.0
Nonclassifiable	47	0.3	464	1.4	374	1.5	6,818,590	4.1	5,063	0.7
<b>EVENT OR EXPOSURE</b>	<b>18,299</b>	<b>100.0%</b>	<b>34,355</b>	<b>100.0%</b>	<b>25,792</b>	<b>100.0%</b>	<b>\$165,205,370</b>	<b>100.0%</b>	<b>718,229</b>	<b>100.0%</b>
Struck Against	1,445	7.9	2,144	6.2	1,662	6.4	4,668,576	2.8	17,552	2.4
Struck By	2,792	15.3	4,358	12.7	3,446	13.4	10,965,151	6.6	44,273	6.2
Caught In, Under, or Between	566	3.1	925	2.7	722	2.8	3,436,796	2.1	12,712	1.8
Rubbed or Abraded	376	2.1	497	1.5	381	1.5	416,566	0.3	1,852	0.3
Other Contact with Object, Equip.	430	2.4	741	2.2	574	2.2	1,534,445	0.9	5,277	0.7
Falls (From Elevation)	923	5.0	1,947	5.7	1,579	6.1	14,788,617	9.0	60,208	8.4
Falls (To Same Level)	1,666	9.1	3,246	9.5	2,497	9.7	19,200,440	11.6	83,190	11.6
Falls (Other)	91	0.5	201	0.6	155	0.6	1,257,036	0.8	6,058	0.8
Bodily Reaction	1,527	8.3	2,954	8.6	2,198	8.5	14,178,874	8.6	62,621	8.7
Overexertion	4,155	22.7	8,541	24.9	6,820	26.4	52,968,710	32.1	258,125	35.9
Repetitive Motion	587	3.2	1,572	4.6	1,049	4.1	7,713,088	4.7	40,765	5.7
Heart Attacks and Strokes	23	0.1	74	0.2	26	0.1	950,523	0.6	808	0.1
Contact (Electrical)	38	0.2	66	0.2	51	0.2	278,459	0.2	945	0.1
Contact (Temperature Extremes)	461	2.5	692	2.0	512	2.0	677,424	0.4	3,720	0.5
Exposure (Noise)	19	0.1	81	0.2	37	0.1	110,999	0.1	4	0.0
Exposure (Harmful Substance)	1,231	6.7	1,994	5.8	1,052	4.1	3,686,278	2.2	20,243	2.8
Accidents (Highway Vehicle)	474	2.6	1,048	3.1	806	3.1	7,722,363	4.7	28,013	3.9
Accidents (Non-Highway Vehicle)	117	0.6	240	0.7	193	0.8	1,508,948	0.9	5,470	0.8
Accidents (Other Transportation)	165	0.9	360	1.1	284	1.1	2,999,695	1.8	12,534	1.8
Explosions	20	0.1	33	0.1	22	0.1	119,152	0.1	377	0.1
Assaults, Violent Acts	736	4.0	1,380	4.0	942	3.7	5,807,840	3.5	31,688	4.4
Other Events/Exposures	108	0.6	306	0.9	197	0.8	2,654,385	1.6	8,284	1.2
Nonclassifiable	349	1.9	955	2.8	587	2.3	7,561,005	4.6	13,510	1.9

Notes: Cost and percent totals may not add due to rounding.



## 2005 HAWAII WORKERS' COMPENSATION STATISTICS

<b>MAUI</b>	<b>REPORTED</b>		<b>PROCESSED</b>		<b>WITH COST</b>		<b>COST</b>		<b>DAYS LOST</b>	
<b>INDUSTRY</b>	<b>4,258</b>	<b>100.0%</b>	<b>7,604</b>	<b>100.0%</b>	<b>5,953</b>	<b>100.0%</b>	<b>\$34,464,533</b>	<b>100.0%</b>	<b>140,171</b>	<b>100.0%</b>
Natural Resources & Mining	153	3.6	345	4.5	268	4.5	1,656,824	4.8	5,240	3.7
Construction	454	10.7	724	9.5	595	10.0	3,615,873	10.5	14,637	10.4
Manufacturing	48	1.1	121	1.6	94	1.6	706,827	2.1	3,156	2.3
Wholesale Trade	105	2.5	177	2.3	138	2.3	609,883	1.8	2,238	1.6
Retail Trade	478	11.2	810	10.7	643	10.8	3,533,997	10.3	15,914	11.4
Transportation & Warehousing	291	6.8	511	6.7	400	6.7	2,270,479	6.6	10,280	7.3
Utilities	32	0.8	76	1.0	51	0.9	281,088	0.8	90	0.1
Information	19	0.5	53	0.7	36	0.6	255,126	0.7	510	0.4
Fin, Ins, Real Est, Rent, & Leasing	127	3.0	214	2.8	171	2.9	1,026,305	3.0	4,413	3.2
Professional, Scientific, & Tech.	27	0.6	68	0.9	49	0.8	685,325	2.0	961	0.7
Management of Companies & Entrpr.	23	0.5	32	0.4	30	0.5	258,420	0.8	586	0.4
Administrative, Support, & Waste	326	7.7	526	6.9	400	6.7	2,983,584	8.7	13,607	9.7
Educational Services	27	0.6	49	0.6	41	0.7	165,459	0.5	423	0.3
Health Care & Social Assistance	205	4.8	331	4.4	246	4.1	1,456,627	4.2	5,223	3.7
Arts, Entertainment, & Recreation	103	2.4	178	2.3	140	2.4	630,803	1.8	2,695	1.9
Accommodation and Food Services	1,126	26.4	1,776	23.4	1,397	23.5	5,876,906	17.1	27,551	19.7
Other Services, except Public Admin.	125	2.9	203	2.7	155	2.6	1,060,140	3.1	3,643	2.6
Public Administration	577	13.6	1,256	16.5	991	16.7	5,674,207	16.5	24,073	17.2
Other	12	0.3	154	2.0	108	1.8	1,716,660	5.0	4,931	3.5
<b>PART OF BODY</b>	<b>4,258</b>	<b>100.0%</b>	<b>7,604</b>	<b>100.0%</b>	<b>5,953</b>	<b>100.0%</b>	<b>\$34,464,533</b>	<b>100.0%</b>	<b>140,171</b>	<b>100.0%</b>
Ears	9	0.2	39	0.5	17	0.3	65,558	0.2	25	0.0
Face, Excluding Eyes, Ears	119	2.8	174	2.3	144	2.4	345,914	1.0	1,252	0.9
Eyes	222	5.2	277	3.6	213	3.6	121,204	0.4	176	0.1
Head, Excluding Ears, Face, Eyes	89	2.1	155	2.0	128	2.2	539,734	1.6	2,092	1.5
Neck	51	1.2	104	1.4	77	1.3	434,384	1.3	1,648	1.2
Trunk, Excluding Back	420	9.9	798	10.5	615	10.3	4,345,310	12.6	21,791	15.6
Back (Spine/Spinal Cord)	764	17.9	1,502	19.8	1,229	20.7	9,076,560	26.3	36,721	26.2
Arms	202	4.7	353	4.6	274	4.6	894,880	2.6	4,089	2.9
Wrists	155	3.6	294	3.9	222	3.7	1,345,499	3.9	5,410	3.9
Hands, Excluding Fingers	241	5.7	354	4.7	271	4.6	643,293	1.9	3,050	2.2
Fingers	578	13.6	840	11.1	657	11.0	1,058,542	3.1	3,082	2.2
Upper Extremities, Multiple	70	1.6	130	1.7	99	1.7	616,824	1.8	3,361	2.4
Legs	392	9.2	723	9.5	578	9.7	3,957,248	11.5	16,241	11.6
Ankles	199	4.7	297	3.9	243	4.1	1,082,301	3.1	6,442	4.6
Feet, Excluding Toes	108	2.5	188	2.5	153	2.6	614,384	1.8	2,037	1.5
Toes	53	1.2	80	1.1	62	1.0	69,495	0.2	444	0.3
Lower Extremities, Multiple	30	0.7	61	0.8	55	0.9	403,813	1.2	1,699	1.2
Body Systems	117	2.8	225	3.0	103	1.7	619,960	1.8	1,921	1.4
Multiple Body Parts	431	10.1	980	12.9	790	13.3	8,049,828	23.4	28,665	20.5
Nonclassifiable	8	0.2	30	0.4	23	0.4	179,802	0.5	25	0.0
<b>SOURCE OF INJURY OR ILLNESS</b>	<b>4,258</b>	<b>100.0%</b>	<b>7,604</b>	<b>100.0%</b>	<b>5,953</b>	<b>100.0%</b>	<b>\$34,464,533</b>	<b>100.0%</b>	<b>140,171</b>	<b>100.0%</b>
Chemical, Chemical Product	111	2.6	148	2.0	102	1.7	169,124	0.5	210	0.2
Containers	633	14.9	1,146	15.1	913	15.3	5,278,649	15.3	21,548	15.4
Furniture, Fixtures	236	5.5	395	5.2	331	5.6	1,583,196	4.6	8,021	5.7
Machinery	236	5.5	426	5.6	340	5.7	1,775,089	5.2	5,487	3.9
Building Materials	124	2.9	207	2.7	184	3.1	1,084,522	3.2	4,198	3.0
Vehicle, Mobile Equipment Parts	35	0.8	68	0.9	60	1.0	543,125	1.6	3,644	2.6
Other Parts and Materials	167	3.9	268	3.5	208	3.5	515,205	1.5	2,702	1.9
Plants, Animals, Minerals	216	5.1	312	4.1	242	4.1	620,805	1.8	1,993	1.4
Person, Injured Worker	529	12.4	1,054	13.9	771	13.0	4,969,170	14.4	22,227	15.9
Person, Other than Injured Worker	163	3.8	307	4.0	231	3.9	1,445,842	4.2	6,368	4.5
Floors, Walkways, Ground	575	13.5	1,114	14.7	923	15.5	7,860,131	22.8	30,349	21.7
Structures, Other Surfaces	124	2.9	189	2.5	151	2.5	581,548	1.7	2,572	1.8
Handtools (Nonpowered)	262	6.2	406	5.3	325	5.5	1,005,740	2.9	4,642	3.3
Handtools (Powered)	68	1.6	105	1.4	87	1.5	305,755	0.9	1,871	1.3
Other Tools, Instruments, Equipment	129	3.0	208	2.7	174	2.9	567,301	1.7	1,970	1.4
Highway Vehicle, Motorized	132	3.1	328	4.3	249	4.2	2,220,690	6.4	8,040	5.7
Nonpowered Plant Vehicles	68	1.6	114	1.5	87	1.5	378,503	1.1	2,246	1.6
Other Vehicles	71	1.7	133	1.8	113	1.9	732,785	2.1	2,614	1.9
Scrap, Waste, Debris	148	3.5	201	2.6	151	2.5	504,997	1.5	1,289	0.9
Other Sources	231	5.4	475	6.3	311	5.2	2,322,356	6.7	8,180	5.8

Notes: Cost and percent totals may not add due to rounding.



**2005 HAWAII WORKERS' COMPENSATION STATISTICS**

<b>MAUI</b>	<b>REPORTED</b>		<b>PROCESSED</b>		<b>WITH COST</b>		<b>COST</b>		<b>DAYS LOST</b>	
<b>OCCUPATION</b>	<b>4,258</b>	<b>100.0%</b>	<b>7,604</b>	<b>100.0%</b>	<b>5,953</b>	<b>100.0%</b>	<b>\$34,464,533</b>	<b>100.0%</b>	<b>140,171</b>	<b>100.0%</b>
Executive, Admin. & Managerial	121	2.8	240	3.2	180	3.0	987,756	2.9	2,206	1.6
Professional Specialty	230	5.4	427	5.6	306	5.1	2,149,469	6.2	6,097	4.4
Technical Support	85	2.0	159	2.1	132	2.2	831,155	2.4	2,777	2.0
Sales	316	7.4	530	7.0	409	6.9	2,651,219	7.7	11,252	8.0
Administrative Support	247	5.8	484	6.4	371	6.2	2,234,218	6.5	8,916	6.4
Services	1,362	32.0	2,290	30.1	1,781	29.9	8,541,115	24.8	39,768	28.4
Agricultural, Forestry & Fishing	289	6.8	498	6.6	404	6.8	1,821,945	5.3	8,705	6.2
Mechanic, Repairer	235	5.5	451	5.9	349	5.9	2,084,936	6.1	8,166	5.8
Construction Trades	330	7.8	600	7.9	492	8.3	3,485,709	10.1	13,098	9.3
Precision Production	41	1.0	99	1.3	74	1.2	483,223	1.4	1,080	0.8
Operator, Fabricator, Inspector	57	1.3	134	1.8	111	1.9	838,613	2.4	2,999	2.1
Transportation, Material Moving	254	6.0	516	6.8	416	7.0	3,002,607	8.7	11,413	8.1
Handler, Helper, Laborer	653	15.3	1,080	14.2	859	14.4	4,760,446	13.8	22,612	16.1
Nonclassifiable	38	0.9	96	1.3	69	1.2	592,122	1.7	1,082	0.8
<b>NATURE OF INJURY OR ILLNESS</b>	<b>4,258</b>	<b>100.0%</b>	<b>7,604</b>	<b>100.0%</b>	<b>5,953</b>	<b>100.0%</b>	<b>\$34,464,533</b>	<b>100.0%</b>	<b>140,171</b>	<b>100.0%</b>
Traumatic Injuries	471	11.1	822	10.8	617	10.4	4,268,567	12.4	19,684	14.0
Fracture	116	2.7	251	3.3	216	3.6	2,826,066	8.2	9,353	6.7
Sprains, Strains	1,212	28.5	2,289	30.1	1,861	31.3	11,556,111	33.5	46,126	32.9
Cut, Laceration	570	13.4	796	10.5	646	10.9	970,605	2.8	2,622	1.9
Puncture, Excluding Bites	151	3.6	209	2.8	163	2.7	141,628	0.4	428	0.3
Abrasions, Scratches	40	0.9	66	0.9	50	0.8	110,754	0.3	558	0.4
Bruises, Contusions	319	7.5	508	6.7	411	6.9	1,544,387	4.5	6,902	4.9
Foreign Bodies	81	1.9	101	1.3	73	1.2	83,914	0.2	49	0.0
Heat Burns	107	2.5	162	2.1	118	2.0	255,058	0.7	911	0.7
Multiple Injuries/Disorders	157	3.7	329	4.3	285	4.8	2,591,165	7.5	9,173	6.5
Back Pain	213	5.0	446	5.9	362	6.1	2,892,742	8.4	12,554	9.0
Pain, Excluding Back	324	7.6	627	8.3	487	8.2	3,303,350	9.6	15,449	11.0
Carpal Tunnel	17	0.4	43	0.6	26	0.4	253,530	0.7	1,028	0.7
Musculoskeletal	8	0.2	40	0.5	34	0.6	212,245	0.6	1,380	1.0
Skin Disorders	21	0.5	35	0.5	20	0.3	21,172	0.1	130	0.1
Symptoms	49	1.2	69	0.9	26	0.4	146,186	0.4	510	0.4
Mental Disorders	37	0.9	89	1.2	29	0.5	227,006	0.7	1,267	0.9
Exposure	27	0.6	30	0.4	20	0.3	5,257	0.0	0	0.0
Other Injuries/Illnesses	331	7.8	635	8.4	464	7.8	2,618,069	7.6	11,605	8.3
Nonclassifiable	7	0.2	57	0.8	45	0.8	436,721	1.3	442	0.3
<b>EVENT OR EXPOSURE</b>	<b>4,258</b>	<b>100.0%</b>	<b>7,604</b>	<b>100.0%</b>	<b>5,953</b>	<b>100.0%</b>	<b>\$34,464,533</b>	<b>100.0%</b>	<b>140,171</b>	<b>100.0%</b>
Struck Against	347	8.2	501	6.6	394	6.6	767,135	2.2	3,614	2.6
Struck By	683	16.0	1,040	13.7	842	14.1	2,916,573	8.5	9,203	6.6
Caught In, Under, or Between	136	3.2	211	2.8	171	2.9	420,672	1.2	2,236	1.6
Rubbed or Abraded	86	2.0	117	1.5	84	1.4	138,981	0.4	561	0.4
Other Contact with Object, Equip.	113	2.7	180	2.4	152	2.6	303,995	0.9	1,088	0.8
Falls (From Elevation)	219	5.1	424	5.6	357	6.0	3,441,970	10.0	14,514	10.4
Falls (To Same Level)	431	10.1	776	10.2	645	10.8	4,601,227	13.4	16,905	12.1
Falls (Other)	23	0.5	61	0.8	45	0.8	471,978	1.4	1,635	1.2
Bodily Reaction	377	8.9	658	8.7	524	8.8	2,730,942	7.9	12,060	8.6
Overexertion	990	23.3	1,960	25.8	1,606	27.0	11,448,956	33.2	50,759	36.2
Repetitive Motion	105	2.5	264	3.5	188	3.2	1,471,551	4.3	7,459	5.3
Heart Attacks and Strokes	3	0.1	15	0.2	7	0.1	176,520	0.5	0	0.0
Contact (Electrical)	5	0.1	13	0.2	11	0.2	61,594	0.2	389	0.3
Contact (Temperature Extremes)	97	2.3	153	2.0	112	1.9	104,645	0.3	679	0.5
Exposure (Noise)	2	0.1	25	0.3	7	0.1	62,886	0.2	25	0.0
Exposure (Harmful Substance)	258	6.1	386	5.1	238	4.0	326,295	1.0	1,766	1.3
Accidents (Highway Vehicle)	61	1.4	166	2.2	118	2.0	1,151,252	3.3	3,555	2.5
Accidents (Non-Highway Vehicle)	42	1.0	90	1.2	72	1.2	773,238	2.2	3,295	2.4
Accidents (Other Transportation)	20	0.5	58	0.8	48	0.8	470,938	1.4	1,229	0.9
Explosions	4	0.1	5	0.1	4	0.1	160,284	0.5	211	0.2
Assaults, Violent Acts	120	2.8	216	2.8	153	2.6	846,311	2.5	3,367	2.4
Other Events/Exposures	37	0.9	73	1.0	46	0.8	493,059	1.4	2,541	1.8
Nonclassifiable	99	2.3	212	2.8	129	2.2	1,123,531	3.3	3,080	2.2

Notes: Cost and percent totals may not add due to rounding.

**2005 HAWAII WORKERS' COMPENSATION STATISTICS**

<b>HAWAII</b>	<b>REPORTED</b>		<b>PROCESSED</b>		<b>WITH COST</b>		<b>COST</b>		<b>DAYS LOST</b>	
<b>INDUSTRY</b>	<b>3,836</b>	<b>100.0%</b>	<b>7,514</b>	<b>100.0%</b>	<b>5,813</b>	<b>100.0%</b>	<b>\$38,070,884</b>	<b>100.0%</b>	<b>174,047</b>	<b>100.0%</b>
Natural Resources & Mining	114	3.0	206	2.7	166	2.9	1,189,809	3.1	5,748	3.3
Construction	456	11.9	810	10.8	660	11.4	6,024,301	15.8	29,053	16.7
Manufacturing	119	3.1	235	3.1	201	3.5	1,608,794	4.2	6,048	3.5
Wholesale Trade	137	3.6	237	3.2	191	3.3	931,691	2.5	4,853	2.8
Retail Trade	440	11.5	783	10.4	619	10.7	3,123,354	8.2	16,849	9.7
Transportation & Warehousing	217	5.7	437	5.8	369	6.4	2,292,174	6.0	11,793	6.8
Utilities	28	0.7	58	0.8	49	0.8	331,241	0.9	875	0.5
Information	39	1.0	68	0.9	50	0.9	324,796	0.9	1,313	0.8
Fin, Ins, Real Est, Rent, & Leasing	88	2.3	183	2.4	137	2.4	1,115,554	2.9	2,475	1.4
Professional, Scientific, & Tech.	60	1.6	111	1.5	87	1.5	336,496	0.9	1,368	0.8
Management of Companies & Entrpr.	15	0.4	31	0.4	24	0.4	181,440	0.5	1,143	0.7
Administrative, Support, & Waste	385	10.0	617	8.2	478	8.2	3,415,835	9.0	19,507	11.2
Educational Services	43	1.1	71	0.9	49	0.8	340,265	0.9	1,132	0.7
Health Care & Social Assistance	244	6.4	423	5.6	303	5.2	2,020,736	5.3	7,928	4.6
Arts, Entertainment, & Recreation	70	1.8	109	1.5	94	1.6	274,722	0.7	769	0.4
Accommodation and Food Services	582	15.2	1,030	13.7	787	13.5	3,895,866	10.2	19,347	11.1
Other Services, except Public Admin.	89	2.3	137	1.8	104	1.8	785,243	2.1	3,488	2.0
Public Administration	698	18.2	1,844	24.5	1,338	23.0	8,462,045	22.2	39,340	22.6
Other	12	0.3	124	1.7	107	1.8	1,416,522	3.7	1,018	0.6
<b>PART OF BODY</b>	<b>3,836</b>	<b>100.0%</b>	<b>7,514</b>	<b>100.0%</b>	<b>5,813</b>	<b>100.0%</b>	<b>\$38,070,884</b>	<b>100.0%</b>	<b>174,047</b>	<b>100.0%</b>
Ears	17	0.4	25	0.3	14	0.2	28,783	0.1	19	0.0
Face, Excluding Eyes, Ears	97	2.5	156	2.1	117	2.0	167,811	0.4	327	0.2
Eyes	157	4.1	207	2.8	156	2.7	305,634	0.8	1,314	0.8
Head, Excluding Ears, Face, Eyes	97	2.5	164	2.2	125	2.2	1,187,738	3.1	3,971	2.3
Neck	73	1.9	128	1.7	99	1.7	823,561	2.2	3,739	2.2
Trunk, Excluding Back	360	9.4	706	9.4	538	9.3	4,377,986	11.5	23,208	13.3
Back (Spine/Spinal Cord)	650	16.9	1,491	19.8	1,190	20.5	9,541,960	25.1	46,134	26.5
Arms	190	5.0	342	4.6	278	4.8	1,256,248	3.3	5,925	3.4
Wrists	128	3.3	272	3.6	210	3.6	1,296,101	3.4	6,078	3.5
Hands, Excluding Fingers	190	5.0	310	4.1	238	4.1	835,339	2.2	4,460	2.6
Fingers	468	12.2	748	10.0	611	10.5	1,655,756	4.4	5,925	3.4
Upper Extremities, Multiple	76	2.0	160	2.1	126	2.2	658,146	1.7	3,594	2.1
Legs	359	9.4	719	9.6	564	9.7	3,726,591	9.8	16,434	9.4
Ankles	164	4.3	266	3.5	216	3.7	921,636	2.4	4,623	2.7
Feet, Excluding Toes	81	2.1	145	1.9	114	2.0	458,648	1.2	3,014	1.7
Toes	29	0.8	49	0.7	41	0.7	98,651	0.3	631	0.4
Lower Extremities, Multiple	40	1.0	72	1.0	53	0.9	237,172	0.6	1,282	0.7
Body Systems	162	4.2	359	4.8	172	3.0	1,164,575	3.1	3,578	2.1
Multiple Body Parts	471	12.3	1,132	15.1	907	15.6	8,560,137	22.5	39,624	22.8
Nonclassifiable	27	0.7	63	0.8	44	0.8	768,411	2.0	167	0.1
<b>SOURCE OF INJURY OR ILLNESS</b>	<b>3,836</b>	<b>100.0%</b>	<b>7,514</b>	<b>100.0%</b>	<b>5,813</b>	<b>100.0%</b>	<b>\$38,070,884</b>	<b>100.0%</b>	<b>174,047</b>	<b>100.0%</b>
Chemical, Chemical Product	91	2.4	132	1.8	93	1.6	258,895	0.7	1,495	0.9
Containers	498	13.0	989	13.2	816	14.0	4,691,794	12.3	28,319	16.3
Furniture, Fixtures	165	4.3	314	4.2	242	4.2	1,566,473	4.1	6,302	3.6
Machinery	224	5.8	418	5.6	332	5.7	2,024,669	5.3	8,642	5.0
Building Materials	145	3.8	255	3.4	203	3.5	1,235,200	3.2	5,296	3.0
Vehicle, Mobile Equipment Parts	30	0.8	65	0.9	54	0.9	301,550	0.8	1,375	0.8
Other Parts and Materials	118	3.1	210	2.8	171	2.9	1,211,995	3.2	4,659	2.7
Plants, Animals, Minerals	223	5.8	359	4.8	275	4.7	805,379	2.1	3,997	2.3
Person, Injured Worker	510	13.3	1,167	15.5	812	14.0	5,795,098	15.2	27,124	15.6
Person, Other than Injured Worker	189	4.9	429	5.7	322	5.5	2,427,286	6.4	10,393	6.0
Floors, Walkways, Ground	481	12.5	1,032	13.7	835	14.4	7,173,315	18.8	33,178	19.1
Structures, Other Surfaces	126	3.3	202	2.7	169	2.9	788,875	2.1	5,382	3.1
Handtools (Nonpowered)	224	5.8	373	5.0	301	5.2	941,075	2.5	3,244	1.9
Handtools (Powered)	70	1.8	108	1.4	97	1.7	526,018	1.4	1,912	1.1
Other Tools, Instruments, Equipment	115	3.0	187	2.5	138	2.4	680,272	1.8	3,033	1.7
Highway Vehicle, Motorized	226	5.9	475	6.3	370	6.4	2,970,939	7.8	13,395	7.7
Nonpowered Plant Vehicles	59	1.5	101	1.3	83	1.4	556,519	1.5	3,145	1.8
Other Vehicles	56	1.5	116	1.5	99	1.7	1,064,496	2.8	4,609	2.7
Scrap, Waste, Debris	117	3.1	162	2.2	124	2.1	137,581	0.4	719	0.4
Other Sources	169	4.4	420	5.6	277	4.8	2,913,455	7.7	7,828	4.5

Notes: Cost and percent totals may not add due to rounding.

**2005 HAWAII WORKERS' COMPENSATION STATISTICS**

<b>HAWAII</b>	<b>REPORTED</b>		<b>PROCESSED</b>		<b>WITH COST</b>		<b>COST</b>		<b>DAYS LOST</b>	
<b>OCCUPATION</b>	<b>3,836</b>	<b>100.0%</b>	<b>7,514</b>	<b>100.0%</b>	<b>5,813</b>	<b>100.0%</b>	<b>\$38,070,884</b>	<b>100.0%</b>	<b>174,047</b>	<b>100.0%</b>
Executive, Admin. & Managerial	106	2.8	215	2.9	165	2.8	1,544,178	4.1	4,792	2.8
Professional Specialty	237	6.2	483	6.4	374	6.4	2,392,511	6.3	6,594	3.8
Technical Support	93	2.4	197	2.6	143	2.5	977,856	2.6	2,555	1.5
Sales	254	6.6	481	6.4	373	6.4	2,076,541	5.5	11,947	6.9
Administrative Support	237	6.2	556	7.4	411	7.1	2,426,535	6.4	11,132	6.4
Services	1,065	27.8	2,060	27.4	1,536	26.4	8,571,096	22.5	45,714	26.3
Agricultural, Forestry & Fishing	276	7.2	532	7.1	407	7.0	2,569,137	6.8	14,829	8.5
Mechanic, Repairer	205	5.3	419	5.6	321	5.5	2,079,291	5.5	7,339	4.2
Construction Trades	365	9.5	648	8.6	521	9.0	4,296,516	11.3	19,351	11.1
Precision Production	49	1.3	104	1.4	82	1.4	599,040	1.6	1,754	1.0
Operator, Fabricator, Inspector	82	2.1	151	2.0	122	2.1	710,973	1.9	3,202	1.8
Transportation, Material Moving	270	7.0	564	7.5	463	8.0	3,492,227	9.2	14,610	8.4
Handler, Helper, Laborer	564	14.7	989	13.2	796	13.7	4,483,239	11.8	28,592	16.4
Nonclassifiable	33	0.9	115	1.5	99	1.7	1,851,744	4.9	1,636	0.9
<b>NATURE OF INJURY OR ILLNESS</b>	<b>3,836</b>	<b>100.0%</b>	<b>7,514</b>	<b>100.0%</b>	<b>5,813</b>	<b>100.0%</b>	<b>\$38,070,884</b>	<b>100.0%</b>	<b>174,047</b>	<b>100.0%</b>
Traumatic Injuries	409	10.7	731	9.7	561	9.7	3,579,071	9.4	16,773	9.6
Fracture	114	3.0	265	3.5	229	3.9	2,394,069	6.3	10,298	5.9
Sprains, Strains	992	25.9	2,080	27.7	1,673	28.8	11,761,040	30.9	59,629	34.3
Cut, Laceration	498	13.0	781	10.4	645	11.1	1,318,640	3.5	4,605	2.7
Puncture, Excluding Bites	120	3.1	167	2.2	130	2.2	356,840	0.9	837	0.5
Abrasions, Scratches	36	0.9	68	0.9	47	0.8	44,412	0.1	325	0.2
Bruises, Contusions	260	6.8	425	5.7	341	5.9	1,938,136	5.1	6,383	3.7
Foreign Bodies	66	1.7	83	1.1	62	1.1	73,194	0.2	108	0.1
Heat Burns	77	2.0	126	1.7	98	1.7	324,898	0.9	1,076	0.6
Multiple Injuries/Disorders	181	4.7	402	5.4	318	5.5	3,082,601	8.1	15,679	9.0
Back Pain	204	5.3	463	6.2	359	6.2	2,948,634	7.8	14,546	8.4
Pain, Excluding Back	335	8.7	701	9.3	525	9.0	3,809,316	10.0	21,737	12.5
Carpal Tunnel	20	0.5	60	0.8	40	0.7	351,515	0.9	1,578	0.9
Musculoskeletal	11	0.3	35	0.5	24	0.4	255,233	0.7	1,725	1.0
Skin Disorders	20	0.5	36	0.5	25	0.4	59,164	0.2	797	0.5
Symptoms	58	1.5	83	1.1	38	0.7	135,714	0.4	102	0.1
Mental Disorders	83	2.2	192	2.6	74	1.3	555,640	1.5	3,110	1.8
Exposure	7	0.2	19	0.3	12	0.2	35,181	0.1	0	0.0
Other Injuries/Illnesses	335	8.7	692	9.2	525	9.0	3,496,639	9.2	14,365	8.3
Nonclassifiable	10	0.3	105	1.4	87	1.5	1,550,947	4.1	374	0.2
<b>EVENT OR EXPOSURE</b>	<b>3,836</b>	<b>100.0%</b>	<b>7,514</b>	<b>100.0%</b>	<b>5,813</b>	<b>100.0%</b>	<b>\$38,070,884</b>	<b>100.0%</b>	<b>174,047</b>	<b>100.0%</b>
Struck Against	259	6.8	401	5.3	318	5.5	882,631	2.3	3,263	1.9
Struck By	585	15.3	972	12.9	795	13.7	2,711,588	7.1	11,566	6.7
Caught In, Under, or Between	111	2.9	192	2.6	165	2.8	777,177	2.0	3,507	2.0
Rubbed or Abraded	77	2.0	101	1.3	78	1.3	296,450	0.8	440	0.3
Other Contact with Object, Equip.	70	1.8	151	2.0	113	1.9	265,100	0.7	985	0.6
Falls (From Elevation)	202	5.3	443	5.9	353	6.1	3,437,285	9.0	15,580	9.0
Falls (To Same Level)	346	9.0	687	9.1	564	9.7	3,838,287	10.1	19,409	11.2
Falls (Other)	21	0.6	46	0.6	40	0.7	271,957	0.7	1,223	0.7
Bodily Reaction	317	8.3	652	8.7	509	8.8	2,998,884	7.9	15,123	8.7
Overexertion	862	22.5	1,827	24.3	1,482	25.5	11,587,969	30.4	62,484	35.9
Repetitive Motion	110	2.9	295	3.9	210	3.6	2,042,883	5.4	9,612	5.5
Heart Attacks and Strokes	5	0.1	13	0.2	3	0.1	170,429	0.5	0	0.0
Contact (Electrical)	12	0.3	24	0.3	17	0.3	297,570	0.8	872	0.5
Contact (Temperature Extremes)	76	2.0	128	1.7	99	1.7	221,424	0.6	527	0.3
Exposure (Noise)	6	0.2	12	0.2	6	0.1	9,811	0.0	0	0.0
Exposure (Harmful Substance)	274	7.1	456	6.1	266	4.6	799,016	2.1	3,936	2.3
Accidents (Highway Vehicle)	137	3.6	301	4.0	227	3.9	2,098,649	5.5	9,670	5.6
Accidents (Non-Highway Vehicle)	40	1.0	87	1.2	68	1.2	536,628	1.4	2,198	1.3
Accidents (Other Transportation)	22	0.6	56	0.8	48	0.8	704,566	1.9	2,447	1.4
Explosions	2	0.1	2	0.0	2	0.0	29,574	0.1	229	0.1
Assaults, Violent Acts	196	5.1	357	4.8	249	4.3	1,569,070	4.1	6,087	3.5
Other Events/Exposures	19	0.5	75	1.0	52	0.9	307,496	0.8	1,884	1.1
Nonclassifiable	87	2.3	236	3.1	149	2.6	2,216,440	5.8	3,005	1.7

Notes: Cost and percent totals may not add due to rounding.

**2005 HAWAII WORKERS' COMPENSATION STATISTICS**

<b>KAUAI</b>	<b>REPORTED</b>		<b>PROCESSED</b>		<b>WITH COST</b>		<b>COST</b>		<b>DAYS LOST</b>	
	<b>INDUSTRY</b>	<b>1,625</b>	<b>100.0%</b>	<b>2,985</b>	<b>100.0%</b>	<b>2,331</b>	<b>100.0%</b>	<b>\$13,038,358</b>	<b>100.0%</b>	<b>61,725</b>
Natural Resources & Mining	38	2.3	95	3.2	82	3.5	698,420	5.4	4,074	6.6
Construction	132	8.1	233	7.8	190	8.2	1,796,408	13.8	7,708	12.5
Manufacturing	22	1.4	44	1.5	38	1.6	511,715	3.9	1,663	2.7
Wholesale Trade	23	1.4	42	1.4	34	1.5	77,119	0.6	190	0.3
Retail Trade	184	11.3	347	11.6	278	11.9	1,405,552	10.8	6,770	11.0
Transportation & Warehousing	62	3.8	123	4.1	100	4.3	397,187	3.1	1,290	2.1
Utilities	11	0.7	19	0.6	12	0.5	155,730	1.2	43	0.1
Information	11	0.7	18	0.6	14	0.6	31,476	0.2	65	0.1
Fin, Ins, Real Est, Rent, & Leasing	52	3.2	88	3.0	69	3.0	275,754	2.1	1,282	2.1
Professional, Scientific, & Tech.	25	1.5	39	1.3	27	1.2	160,046	1.2	1,065	1.7
Management of Companies & Entrpr.	7	0.4	9	0.3	6	0.3	8,596	0.1	11	0.0
Administrative, Support, & Waste	123	7.6	206	6.9	160	6.9	1,025,237	7.9	5,823	9.4
Educational Services	4	0.3	9	0.3	9	0.4	14,975	0.1	4	0.0
Health Care & Social Assistance	116	7.1	202	6.8	156	6.7	747,620	5.7	3,682	6.0
Arts, Entertainment, & Recreation	44	2.7	77	2.6	64	2.8	262,791	2.0	1,535	2.5
Accommodation and Food Services	462	28.4	717	24.0	551	23.6	2,451,977	18.8	10,799	17.5
Other Services, except Public Admin.	33	2.0	50	1.7	42	1.8	222,059	1.7	1,177	1.9
Public Administration	274	16.9	624	20.9	463	19.9	2,223,158	17.1	13,466	21.8
Other	2	0.1	43	1.4	36	1.5	572,538	4.4	1,078	1.8
<b>PART OF BODY</b>	<b>1,625</b>	<b>100.0%</b>	<b>2,985</b>	<b>100.0%</b>	<b>2,331</b>	<b>100.0%</b>	<b>\$13,038,358</b>	<b>100.0%</b>	<b>61,725</b>	<b>100.0%</b>
Ears	5	0.3	11	0.4	7	0.3	19,926	0.2	0	0.0
Face, Excluding Eyes, Ears	41	2.5	68	2.3	53	2.3	109,453	0.8	304	0.5
Eyes	96	5.9	119	4.0	94	4.0	59,770	0.5	71	0.1
Head, Excluding Ears, Face, Eyes	45	2.8	71	2.4	53	2.3	126,564	1.0	77	0.1
Neck	13	0.8	44	1.5	31	1.3	207,697	1.6	393	0.6
Trunk, Excluding Back	174	10.7	348	11.7	270	11.6	1,927,848	14.8	9,734	15.8
Back (Spine/Spinal Cord)	246	15.1	493	16.5	406	17.4	2,793,669	21.4	13,838	22.4
Arms	90	5.5	140	4.7	111	4.8	247,736	1.9	1,952	3.2
Wrists	68	4.2	138	4.6	109	4.7	630,455	4.8	2,781	4.5
Hands, Excluding Fingers	77	4.7	120	4.0	96	4.1	330,405	2.5	1,052	1.7
Fingers	206	12.7	298	10.0	252	10.8	463,138	3.6	1,944	3.2
Upper Extremities, Multiple	31	1.9	58	1.9	44	1.9	218,734	1.7	1,117	1.8
Legs	158	9.7	293	9.8	234	10.0	1,446,728	11.1	6,475	10.5
Ankles	70	4.3	106	3.6	85	3.7	317,176	2.4	1,385	2.2
Feet, Excluding Toes	44	2.7	74	2.5	60	2.6	368,535	2.8	2,071	3.4
Toes	15	0.9	22	0.7	19	0.8	35,622	0.3	30	0.1
Lower Extremities, Multiple	15	0.9	23	0.8	20	0.9	196,840	1.5	1,119	1.8
Body Systems	62	3.8	162	5.4	72	3.1	753,722	5.8	4,493	7.3
Multiple Body Parts	163	10.0	379	12.7	303	13.0	2,725,913	20.9	12,889	20.9
Nonclassifiable	6	0.4	18	0.6	12	0.5	58,427	0.5	0	0.0
<b>SOURCE OF INJURY OR ILLNESS</b>	<b>1,625</b>	<b>100.0%</b>	<b>2,985</b>	<b>100.0%</b>	<b>2,331</b>	<b>100.0%</b>	<b>\$13,038,358</b>	<b>100.0%</b>	<b>61,725</b>	<b>100.0%</b>
Chemical, Chemical Product	42	2.6	77	2.6	59	2.5	53,999	0.4	30	0.1
Containers	233	14.3	420	14.1	335	14.4	1,764,802	13.5	9,994	16.2
Furniture, Fixtures	98	6.0	176	5.9	141	6.1	697,720	5.4	1,764	2.9
Machinery	104	6.4	166	5.6	127	5.5	695,205	5.3	2,787	4.5
Building Materials	32	2.0	74	2.5	66	2.8	397,403	3.1	1,235	2.0
Vehicle, Mobile Equipment Parts	17	1.1	36	1.2	33	1.4	275,640	2.1	1,211	2.0
Other Parts and Materials	38	2.3	70	2.4	63	2.7	464,330	3.6	1,379	2.2
Plants, Animals, Minerals	110	6.8	164	5.5	126	5.4	267,491	2.1	806	1.3
Person, Injured Worker	206	12.7	435	14.6	286	12.3	2,036,879	15.6	14,010	22.7
Person, Other than Injured Worker	83	5.1	138	4.6	102	4.4	500,089	3.8	3,791	6.1
Floors, Walkways, Ground	222	13.7	435	14.6	362	15.5	2,773,371	21.3	13,349	21.6
Structures, Other Surfaces	38	2.3	78	2.6	64	2.8	458,454	3.5	1,957	3.2
Handtools (Nonpowered)	100	6.2	147	4.9	122	5.2	299,765	2.3	1,481	2.4
Handtools (Powered)	17	1.1	34	1.1	32	1.4	186,530	1.4	688	1.1
Other Tools, Instruments, Equipment	43	2.7	82	2.8	70	3.0	300,902	2.3	1,457	2.4
Highway Vehicle, Motorized	58	3.6	131	4.4	103	4.4	550,173	4.2	2,211	3.6
Nonpowered Plant Vehicles	29	1.8	55	1.8	44	1.9	208,527	1.6	830	1.3
Other Vehicles	24	1.5	47	1.6	40	1.7	341,126	2.6	439	0.7
Scrap, Waste, Debris	61	3.8	80	2.7	62	2.7	59,829	0.5	77	0.1
Other Sources	70	4.3	140	4.7	94	4.0	706,123	5.4	2,229	3.6

Notes: Cost and percent totals may not add due to rounding.

**2005 HAWAII WORKERS' COMPENSATION STATISTICS**

<b>KAUAI</b>	<b>REPORTED</b>		<b>PROCESSED</b>		<b>WITH COST</b>		<b>COST</b>		<b>DAYS LOST</b>	
<b>OCCUPATION</b>	<b>1,625</b>	<b>100.0%</b>	<b>2,985</b>	<b>100.0%</b>	<b>2,331</b>	<b>100.0%</b>	<b>\$13,038,358</b>	<b>100.0%</b>	<b>61,725</b>	<b>100.0%</b>
Executive, Admin. & Managerial	32	2.0	65	2.2	50	2.2	255,581	2.0	1,037	1.7
Professional Specialty	83	5.1	176	5.9	133	5.7	520,748	4.0	1,425	2.3
Technical Support	56	3.5	92	3.1	74	3.2	304,519	2.3	1,350	2.2
Sales	102	6.3	191	6.4	155	6.7	772,249	5.9	3,244	5.3
Administrative Support	109	6.7	213	7.1	145	6.2	720,906	5.5	4,415	7.2
Services	582	35.8	1,001	33.5	772	33.1	3,900,612	29.9	21,755	35.3
Agricultural, Forestry & Fishing	106	6.5	205	6.9	167	7.2	616,399	4.7	2,251	3.7
Mechanic, Repairer	97	6.0	180	6.0	144	6.2	1,007,757	7.7	4,177	6.8
Construction Trades	104	6.4	193	6.5	160	6.9	1,903,443	14.6	7,585	12.3
Precision Production	17	1.1	34	1.1	27	1.2	111,588	0.9	784	1.3
Operator, Fabricator, Inspector	29	1.8	49	1.6	41	1.8	255,841	2.0	1,697	2.8
Transportation, Material Moving	85	5.2	172	5.8	134	5.8	766,499	5.9	3,498	5.7
Handler, Helper, Laborer	202	12.4	371	12.4	296	12.7	1,650,832	12.7	7,615	12.3
Nonclassifiable	21	1.3	43	1.4	33	1.4	251,384	1.9	892	1.5
<b>NATURE OF INJURY OR ILLNESS</b>	<b>1,625</b>	<b>100.0%</b>	<b>2,985</b>	<b>100.0%</b>	<b>2,331</b>	<b>100.0%</b>	<b>\$13,038,358</b>	<b>100.0%</b>	<b>61,725</b>	<b>100.0%</b>
Traumatic Injuries	145	8.9	254	8.5	199	8.5	1,123,794	8.6	6,344	10.3
Fracture	60	3.7	107	3.6	91	3.9	850,290	6.5	4,209	6.8
Sprains, Strains	425	26.2	851	28.5	689	29.6	4,559,488	35.0	22,785	36.9
Cut, Laceration	198	12.2	286	9.6	242	10.4	348,004	2.7	1,205	2.0
Puncture, Excluding Bites	41	2.5	54	1.8	51	2.2	62,407	0.5	388	0.6
Abrasions, Scratches	23	1.4	32	1.1	24	1.0	14,133	0.1	33	0.1
Bruises, Contusions	146	9.0	243	8.1	198	8.5	761,354	5.8	2,292	3.7
Foreign Bodies	37	2.3	43	1.4	32	1.4	11,622	0.1	3	0.0
Heat Burns	52	3.2	74	2.5	52	2.2	28,952	0.2	37	0.1
Multiple Injuries/Disorders	50	3.1	114	3.8	97	4.2	796,840	6.1	2,831	4.6
Back Pain	65	4.0	129	4.3	99	4.3	740,504	5.7	4,921	8.0
Pain, Excluding Back	135	8.3	283	9.5	220	9.4	1,363,085	10.5	5,062	8.2
Carpal Tunnel	10	0.6	23	0.8	12	0.5	123,496	1.0	524	0.9
Musculoskeletal	10	0.6	25	0.8	16	0.7	56,737	0.4	407	0.7
Skin Disorders	15	0.9	30	1.0	26	1.1	12,459	0.1	115	0.2
Symptoms	24	1.5	39	1.3	15	0.6	29,720	0.2	412	0.7
Mental Disorders	32	2.0	91	3.1	34	1.5	415,094	3.2	3,697	6.0
Exposure	2	0.1	5	0.2	4	0.2	781	0.0	2	0.0
Other Injuries/Illnesses	152	9.4	281	9.4	213	9.1	1,574,251	12.1	6,094	9.9
Nonclassifiable	3	0.2	21	0.7	17	0.7	165,347	1.3	364	0.6
<b>EVENT OR EXPOSURE</b>	<b>1,625</b>	<b>100.0%</b>	<b>2,985</b>	<b>100.0%</b>	<b>2,331</b>	<b>100.0%</b>	<b>\$13,038,358</b>	<b>100.0%</b>	<b>61,725</b>	<b>100.0%</b>
Struck Against	112	6.9	175	5.9	146	6.3	296,930	2.3	935	1.5
Struck By	241	14.8	390	13.1	325	13.9	1,246,997	9.6	4,796	7.8
Caught In, Under, or Between	48	3.0	75	2.5	67	2.9	295,912	2.3	1,276	2.1
Rubbed or Abraded	42	2.6	46	1.5	33	1.4	79,287	0.6	574	0.9
Other Contact with Object, Equip.	41	2.5	71	2.4	62	2.7	85,643	0.7	157	0.3
Falls (From Elevation)	83	5.1	170	5.7	145	6.2	1,497,338	11.5	7,531	12.2
Falls (To Same Level)	155	9.5	298	10.0	244	10.5	1,746,275	13.4	7,001	11.3
Falls (Other)	7	0.4	16	0.5	13	0.6	37,449	0.3	351	0.6
Bodily Reaction	120	7.4	203	6.8	153	6.6	955,732	7.3	6,304	10.2
Overexertion	365	22.5	749	25.1	602	25.8	3,833,749	29.4	18,628	30.2
Repetitive Motion	42	2.6	113	3.8	81	3.5	466,831	3.6	3,143	5.1
Heart Attacks and Strokes	5	0.3	9	0.3	1	0.0	20,244	0.2	0	0.0
Contact (Electrical)	3	0.2	9	0.3	8	0.3	358,919	2.8	378	0.6
Contact (Temperature Extremes)	52	3.2	74	2.5	52	2.2	29,821	0.2	37	0.1
Exposure (Noise)	2	0.1	2	0.1	2	0.1	322	0.0	0	0.0
Exposure (Harmful Substance)	139	8.6	243	8.1	146	6.3	464,099	3.6	3,669	5.9
Accidents (Highway Vehicle)	26	1.6	58	1.9	44	1.9	327,689	2.5	1,424	2.3
Accidents (Non-Highway Vehicle)	23	1.4	38	1.3	28	1.2	255,967	2.0	756	1.2
Accidents (Other Transportation)	8	0.5	30	1.0	25	1.1	232,554	1.8	326	0.5
Explosions	1	0.1	2	0.1	1	0.0	2,541	0.0	0	0.0
Assaults, Violent Acts	74	4.6	120	4.0	95	4.1	302,435	2.3	2,041	3.3
Other Events/Exposures	7	0.4	28	0.9	19	0.8	155,046	1.2	576	0.9
Nonclassifiable	29	1.8	66	2.2	39	1.7	346,578	2.7	1,822	3.0

Notes: Cost and percent totals may not add due to rounding.

## 2005 HAWAII REPORTED FATALITIES

	STATE	% of TOTAL	OAHU	HAWAII COUNTY	MAUI COUNTY	KAUAI
<b>TOTAL</b>	<b>21</b>	<b>100.0%</b>	<b>8</b>	<b>7</b>	<b>2</b>	<b>4</b>
<b>SEX</b>						
Male	18	85.7	8	5	2	3
Female	3	14.3	0	2	0	1
<b>MARITAL STATUS</b>						
Married	15	71.4	7	4	2	2
Single	6	28.6	1	3	0	2
<b>AGE</b>						
Under 18	0	0.0	0	0	0	0
18-24	0	0.0	0	0	0	0
25-34	1	4.8	0	1	0	0
35-44	4	19.0	1	3	0	0
45-54	8	38.1	4	1	1	2
55-64	6	28.6	1	2	1	2
Over 64	2	9.5	2	0	0	0
<b>INDUSTRY</b>						
Construction	3	14.3	1	1	0	1
Wholesale Trade	1	4.8	1	0	0	0
Retail Trade	1	4.8	1	0	0	0
Transportation & Warehousing	2	9.5	2	0	0	0
Administrative Support & Waste Management	5	23.8	0	4	0	1
Health Care & Social Assistance	1	4.8	0	1	0	0
Arts, Entertainment & Recreation	3	14.3	1	1	0	1
Accommodation & Food Service	3	14.3	1	0	2	0
Other Services, except Public Administration	1	4.8	0	0	0	1
Public Administration	1	4.8	1	0	0	0
<b>OCCUPATION</b>						
Executive, Administrative & Managerial	2	9.5	1	0	0	1
Professional Specialty	1	4.8	1	0	0	0
Protective Services	1	4.8	1	0	0	0
Other Services	6	28.6	0	4	1	1
Other Agricultural & Related	3	14.3	0	1	1	1
Construction Trades	2	9.5	1	0	0	1
Transportation, Material Moving	3	14.3	2	1	0	0
Handler, Helper, Laborer	3	14.3	2	1	0	0
<b>CAUSE</b>						
Heart Attack/Stroke	8	38.1	3	1	2	2
Exposure to Harmful Substances	2	9.5	0	1	0	1
Transportation Accidents	3	14.3	0	2	0	1
Falls	1	4.8	1	0	0	0
Nonclassifiable	7	33.3	4	3	0	0

Note: Percentages may not add due to rounding.

## 2005 HEARINGS AND DECISIONS ISSUED

	STATE	OAHU	EAST HAWAII	WEST HAWAII	MAUI	KAUAI
<b>HEARINGS</b>	2,719	1,595	316	176	379	253
<b>DECISIONS ISSUED</b>	10,135	6,376	1,022	654	1,381	702
Act 59 Settlement	965	584	91	74	176	40
Attorney Fees	1,921	1,342	204	82	232	61
Denial	288	192	22	15	33	26
Disfigurement	967	545	118	70	121	113
Fatality	14	4	0	7	1	2
Medical	718	301	51	88	131	147
Permanent Partial	2,670	1,841	216	170	324	119
Permanent Total	20	9	4	0	5	2
Temporary Partial	11	6	1	0	4	0
Temporary Total	563	297	93	22	72	79
Benefit Adjustments	2	2	0	0	0	0
Other	1,996	1,253	222	126	282	113

## WORKERS' COMPENSATION MAXIMUM WEEKLY WAGE BASE AND MAXIMUM WEEKLY BENEFIT AMOUNT HISTORY

Year	Maximum Weekly Wage Base	Maximum Weekly Benefit Amount	Year	Maximum Weekly Wage Base	Maximum Weekly Benefit Amount
1975	\$232.50	\$155.00	1991	\$617.97	\$412.00
1976	\$250.50	\$167.00	1992	\$655.47	\$437.00
1977	\$268.50	\$179.00	1993	\$689.97	\$460.00
1978	\$283.50	\$189.00	1994	\$721.46	\$481.00
1979	\$300.00	\$200.00	1995	\$736.46	\$491.00
1980	\$322.50	\$215.00	1996	\$743.96	\$496.00
1981	\$352.50	\$235.00	1997	\$751.46	\$501.00
1982	\$378.00	\$252.00	1998	\$761.96	\$508.00
1983	\$399.00	\$266.00	1999	\$778.46	\$519.00
1984	\$421.50	\$281.00	2000	\$793.46	\$529.00
1985	\$436.50	\$291.00	2001	\$820.46	\$547.00
1986	\$448.50	\$299.00	2002	\$845.96	\$564.00
1987	\$477.00	\$318.00	2003	\$869.96	\$580.00
1988	\$501.00	\$334.00	2004	\$893.96	\$596.00
1989	\$537.00	\$358.00	2005	\$932.95	\$622.00
1990	\$574.47	\$383.00			

## DIGEST OF THE WORKERS' COMPENSATION LAW

<b>Purpose</b>	To provide medical, rehabilitation, income, and indemnity benefits to workers suffering work-connected injuries, or in the event of death, income and indemnity benefits to their dependents.
<b>Coverage</b>	All workers except: Federal government workers. Workers for nonprofit organizations if in voluntary or unpaid capacity. Students working for a school, college, or university in return for board, lodging, or tuition. Ordained members of the church. Certain domestic workers. Certain 25% stockholders of a corporation. Owners with 50% or more of a corporation. Real estate salespersons or brokers paid solely by commission.
<b>Eligibility Requirements for Benefits</b>	Employee suffering personal injury by accident arising out of and in the course of employment, or by disease proximately caused by or resulting from the nature of the employment.
<b>Disqualification from Benefits</b>	Injury incurred by willful self-infliction or to another by actively engaging in any unprovoked non-work related physical altercation other than in self-defense or by intoxication. Mental stress claims resulting solely from disciplinary action taken in good faith by employer.
<b>Waiting Period</b>	Three days.
<b>Weekly Benefits</b>	66-2/3% of the worker's average weekly wages for permanent total, partial, and temporary total disabilities. 66-2/3% of difference of wages before and after injury for temporary partial disability.
<b>Benefit Provisions - 2005</b>	Minimum weekly benefits - \$156.00 Maximum weekly benefits - \$622.00 Maximum weekly amount used to compute weekly benefits for surviving spouse - \$932.95 Funeral expenses - \$6,220.00 Burial expenses - \$3,110.00
<b>Duration</b>	Medical - as reasonably needed or as the nature or injury requires. Death - various duration for beneficiaries. Temporary total disability - duration of the disability. Permanent total disability - for life.
<b>Appeal Provisions</b>	Within 20 days after a decision has been sent to parties concerned.
<b>Statute of Limitation for Filing a Claim</b>	Within two years after date of injury in which the effects have manifest and within five years after date of accident or occurrence of injury.
<b>Employer's Penalties and Fines</b>	\$250 or \$10 for each employee each day for failure to give security for compensation. Up to \$5,000 for refusing or neglecting to give required notice or to make required reports. 20% of unpaid compensation for default in payment.
<b>Method of Insuring</b>	Through insurance carriers or approved employer self-financing.
<b>Financing</b>	Cost of insurance paid by employer.
<b>Funds</b>	Special Compensation Fund  <i><b>Income:</b></i> Fines and penalties. Death benefits where there are no dependents. Special assessments.  <i><b>Outgo:</b></i> To pay benefits to injured employee whose injury occurred prior to 1973 and where the employer or carrier has paid the maximum aggregate, for concurrent employment benefits and for preexisting condition benefits. To reimburse employees/employers effective January 1, 1992 and January 1 of every tenth year thereafter, for the cost of supplemental allowance for permanent total disability payments to employees injured before January 1, 1992 and January 1 of every tenth year thereafter. To injured employee or dependents where employer is in default in payment of compensation. For litigation expense incurred by or on behalf of the Special Compensation Fund.  <i><b>Solvency:</b></i> When cash balance falls below an amount determined by the Director to be insufficient to meet the fund's current and projected obligation, a levy based on a percentage of gross premiums and a special charge against self-insured until cash balance equals or exceeds an amount determined by the director to be sufficient to meet the fund's current and projected obligations.



## DEFINITIONS

<b>Attendant Services</b>	Cost of services of an attendant for a totally disabled employee.
<b>Average Cost Per Case</b>	Total compensation costs divided by the number of processed cases with cost.
<b>Compensation Orders</b>	Decisions made on controverted cases, on awarding of permanent partial disability and disfigurement, and on reopening cases.
<b>Costs</b>	All payments accorded to a claimant to include disability, death, disfigurement, vocational rehabilitation, attendant services, and medical payments.
<b>Days Lost</b>	Number of compensated (calendar) days in which injured workers were not able to work because of temporary total disability. This excludes the three-day waiting period.
<b>Disfigurement</b>	Scar, deformity, discoloration, or other disfiguring consequences resulting from the injury or caused by medical, surgical, and hospital treatment of the employee. This is separate from permanent partial disability.
<b>Employment</b>	That portion of the work force covered by Workers' Compensation law. Annual average taken from the "Employment and Payrolls in Hawaii" report excluding federal government employees.
<b>Event or Exposure</b>	Identifies the circumstance, which directly resulted in the injury or illness.
<b>Industry</b>	Identifies employers by the major type of activity in which they are engaged.
<b>Medical</b>	Physicians and hospital costs and costs for services and supplies.
<b>Nature of Injury or Illness</b>	Identifies the injury or illness in terms of its principal physical characteristic.
<b>Occupation</b>	Identifies the nature of work of the employee.
<b>Part of Body</b>	Identifies the part of the worker's body directly affected by the injury or illness.
<b>Permanent Partial Disability</b>	Injury or illness which results in the complete loss or loss of any member or part of the body or any permanent impairment of functions of the body or part thereof, regardless of any pre-existing disability.
<b>Permanent Total Disability</b>	Any injury or illness other than death, which permanently and totally incapacitates an employee from following any gainful occupation.
<b>Processed Cases</b>	Cases, which have been subject to screening procedures, the injury or illness medically evaluated, and all medical costs and workers' compensation payments totaled. Includes injuries and illnesses, which occurred in the report year or prior years.
<b>Reported Injuries and Illnesses (Reported Cases)</b>	All injuries and illnesses reported to the Disability Compensation Division. These reported injuries or illnesses may not have occurred during the report year.
<b>Reported Fatalities</b>	Any death resulting from an on-the-job injury or illness reported to the Disability Compensation Division.
<b>Source of Injury or Illness</b>	Identifies the object, substance, exposure, or bodily motion, which directly produced or inflicted the injury or illness.
<b>Temporary Partial Disability</b>	A work injury or illness which causes partial rather than total disability for temporary periods. The injured worker is paid a weekly benefit amount of 66-2/3 percent of the difference between his average weekly wages before the injury and his weekly earnings thereafter for the duration of the disability.
<b>Temporary Total Disability</b>	A common type of disability where the work injury or illness causes total disability for temporary periods. The employer or insurance carrier, for the duration of the disability, but not including the first three days, pays the injured worker a weekly benefit amount of 66-2/3 percent of his average weekly wages, but not more than the maximum weekly benefit amount nor less than the minimum weekly benefit amount, or if his average weekly wages are less than the minimum weekly benefit amount, at a rate of 100 percent of his average weekly wages.
<b>Vocational Rehabilitation</b>	Cost of vocational rehabilitation services.

## TECHNICAL NOTES

The Workers' Compensation Data Book is based on the annual accumulation of data in the State of Hawaii, Disability Compensation database.

1. The following coding systems and locally revised versions were used to categorize data:
  - a) Industrial attachment is determined by the principal activity of the employer as defined in the **North American Industry Classification System 2002 (NAICS)**. The new NAICS industry groupings better reflect the workings of the U.S. economy, particularly in the services sector. NAICS, developed using a production oriented conceptual framework, groups establishments into industries based on the activity in which they are primarily engaged. It is not an update of the Standard Industrial Classification (SIC) system. NAICS focuses on how products and services are created. More information on NAICS is available at the U.S. Census Bureau website at <http://www.census.gov/epcd/www/naics.html>.
  - b) Codes and definitions used to categorize Nature of Injury or Illness, Part of Body Affected, Source of Injury or Illness, and Event or Exposure were modeled after the **1992 Bureau of Labor Statistics (BLS) Occupational Injury and Illness Classification Structures (OIICS)**. Starting with 1996 data, BLS OIICS data codes were locally modified to 2 digits instead of 4 digits, making the data less detailed.
  - c) Occupational groups are based on the **1990 Alphabetical Index of Industries and Occupations**, developed and published by the Bureau of the Census, Washington, D.C., U.S. Government Printing Office. Starting with 1996 data, the occupation classifications were locally modified, making the data less detailed.
2. From 1999, the employment data source used in the **Worker's Compensation Data Book** has been changed. Instead of the **Labor Force Data Book** employment we are using the **Employment and Payrolls in Hawaii** statistics. Employment data from the later publication may be more in line with workers covered under the Workers' Compensation program. Caution should be taken when reviewing the employment and frequency data for trend analysis prior to 1999.
3. From 2000, the table Hearings and Decisions Issued (previously called Compensation Orders Issued and Number of Hearings) has changed to include Act 59 settlements and attorney fees. The combined category Permanent Partial & Disfigurement no longer exists. Figures are reported under the category with the highest severity. For example: a case with disability payments and disfigurement award would be counted in the disability category and not in disfigurement.
4. Beginning with the **2002 Workers' Compensation Data Book**, there is a new format for the Industry category. The North American Industry Classification System (NAICS) is being used to designate the different industries instead of the Standard Industrial Classification (SIC) system. For trend analysis purposes, the data may not be comparable.
5. Effective with the **2004 Workers' Compensation Data Book**, the close date to process a "reported case" for the preceding calendar year was changed from January 31 to December 31 to accommodate the filing of electronic "WC-1 Employers Report of Industrial Injury". For trend analysis purposes, the data for 2004 may not be comparable.

STATE OF HAWAII  
DEPARTMENT OF LABOR AND INDUSTRIAL RELATIONS  
RESEARCH AND STATISTICS OFFICE  
830 PUNCHBOWL STREET, ROOM 304  
HONOLULU, HAWAII 96813