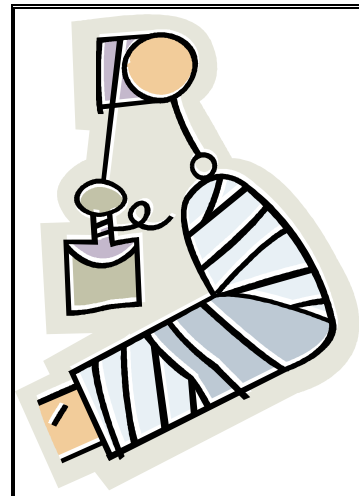
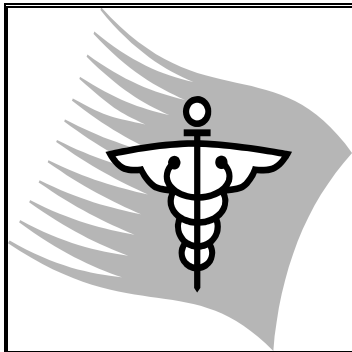
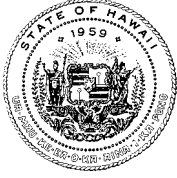


# WORKERS' COMPENSATION DATA BOOK 2002





**STATE OF HAWAII**  
**LINDA LINGLE, GOVERNOR**



**DEPARTMENT OF LABOR AND INDUSTRIAL RELATIONS**  
**NELSON B. BEFTEL, DIRECTOR**  
**COLLEEN Y. LaCLAIR, DEPUTY DIRECTOR**



**RESEARCH AND STATISTICS OFFICE**  
**NAOMI HARADA, Chief**

Prepared by:  
**OPERATIONS MANAGEMENT INFORMATION**  
DAYLE KOBASHIGAWA, Supervisor

In Cooperation with:  
**DISABILITY COMPENSATION DIVISION**  
GARY HAMADA, Administrator

# **WORKERS' COMPENSATION DATA BOOK 2002**

## **INTRODUCTION**

The WORKERS' COMPENSATION DATA BOOK presents a summary of information on injuries and illnesses reported to the Disability Compensation Division of the State Department of Labor and Industrial Relations.

This publication is available on the Internet at [www.loihi.state.hi.us](http://www.loihi.state.hi.us).

The 2002 Workers' Compensation Data Book is the first annual report that provides tabulations of reported cases and processed cases and cost based on the North American Industry Classification System 2002 (NAICS). Previous publications were tabulated based on the Standard Industrial Classification (SIC) industry coding system.

Please call the following numbers for your inquiries:

Data contained in this report – 586-9014

Copies of this report – 586-8999

## TABLE OF CONTENTS

Highlights 2002.....	3
2002 Hawaii Reported Injuries and Illnesses .....	4
2002 Reported Injuries and Illnesses: Frequency by Industry .....	5
2002 Hawaii Processed Cases and Cost.....	6
Average Cost by Part of Body .....	7
2002 Hawaii Workers' Compensation Statistics	
Reported Cases:	
Part of Body Affected by Nature of Injury or Illness .....	8
Type of Accident or Exposure by Source of Injury or Illness .....	8
Reported & Processed Cases, Cost, Days Lost:	
State .....	9
Oahu.....	12
Maui County .....	14
Hawaii County .....	16
Kauai County.....	18
2002 Hawaii Reported Fatalities .....	20
2002 Hearings and Decisions Issued.....	21
Maximum Weekly Wage Base and	
Maximum Weekly Benefit Amount History .....	21
Digest of the Workers' Compensation Law .....	22
Definitions .....	23
Technical Notes.....	24

## HIGHLIGHTS 2002

**STATE OF HAWAII**  
**REPORTED CASES: 29,757**  
**PROCESSED CASES WITH COST: 43,465**  
**TOTAL COST: \$267,827,254**  
**COST PER CASE: \$6,162**  
**MEDICAL COST: \$105,926,608**  
**DAYS LOST: 1,277,863**  
**REPORTED FATALITY: 31**



### Kauai County

Reported Cases: 1,781  
Processed Cases with Cost: 2,587  
Total Cost: \$11,145,177  
Cost Per Case: \$4,308  
Medical Cost: \$5,004,278  
Days Lost: 60,207  
Reported Fatality: 4



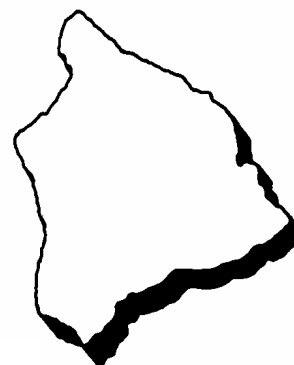
### Maui County

Reported Cases: 4,544  
Processed Cases with Cost: 6,600  
Total Cost: \$39,505,734  
Cost Per Case: \$5,986  
Medical Cost: \$16,120,375  
Days Lost: 176,291  
Reported Fatality: 4



### Oahu

Reported Cases: 19,667  
Processed Cases with Cost: 28,273  
Total Cost: \$176,460,724  
Cost Per Case: \$6,241  
Medical Cost: \$69,278,123  
Days Lost: 833,266  
Reported Fatality: 18



### Hawaii County

Reported Cases: 3,765  
Processed Cases with Cost: 6,005  
Total Cost: \$40,715,619  
Cost Per Case: \$6,780  
Medical Cost: \$15,523,832  
Days Lost: 208,099  
Reported Fatality: 5

## 2002 HAWAII REPORTED INJURIES AND ILLNESSES

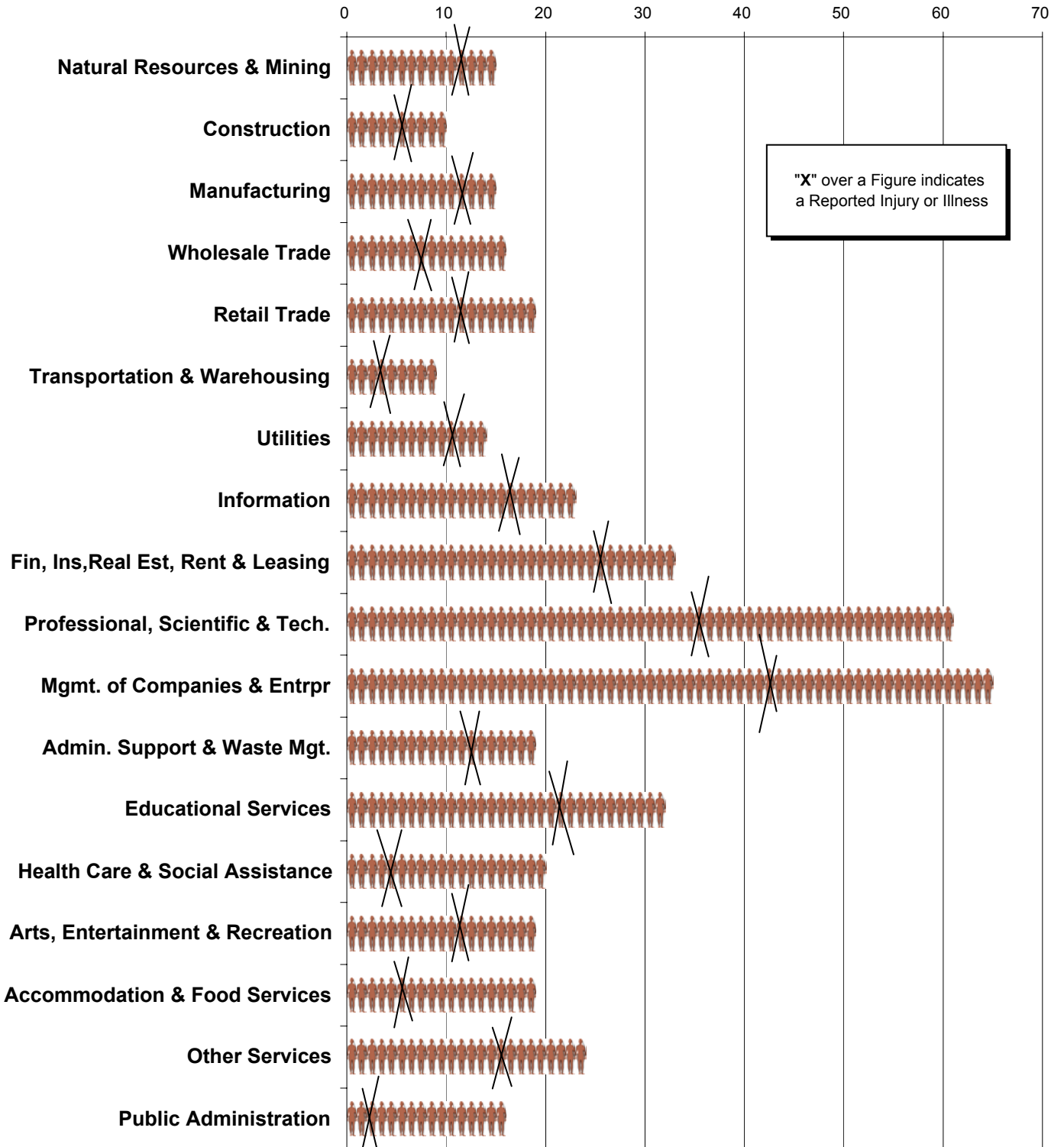
In 2002, reported cases decreased by 422 or 1.4% to 29,757. Employment increased by 1,006 to 527,823. Public administration had the largest number of reported cases at 5,237 followed by accommodation and food service with 4,663. Management of companies and enterprises had the largest percentage increase in reported cases going from 67 to 101 or 50.8 percent. They also had the largest employment increase of 9.7 percent from 2001. Arts, entertainment, and recreation had the largest percentage decrease in reported cases dropping 20.8 percent to 593 from 749 in 2001. Employment for this same industry decreased by only 1.4 percent from 2001.

The frequency of injury or illness declined or remained the same in every industry except for manufacturing, transportation and warehousing, information, and management of companies and enterprises. Transportation and warehousing had the highest frequency with one reported injury or illness for every nine workers. Construction was next highest with a rate of one in ten. Management of companies and enterprises had the lowest frequency of cases with only one injury or illness for every 65 workers. The professional, scientific and technical services group had the next lowest frequency with one in 61.

### Employment and Reported Cases by Industry for Hawaii

INDUSTRY	2001			2002		
	Employment	Reported Cases	Frequency	Employment	Reported Cases	Frequency
<b>Goods Producing</b>						
Natural Resources & Mining	7,994	628	1 in 13	7,855	525	1 in 15
Construction	24,483	2,479	1 in 10	25,631	2,577	1 in 10
Manufacturing	16,459	989	1 in 17	15,240	1,037	1 in 15
<b>Service Providing</b>						
Wholesale Trade	16,391	1,071	1 in 15	16,294	1,014	1 in 16
Retail Trade	66,357	3,494	1 in 19	64,255	3,422	1 in 19
Transportation & Warehousing	25,593	2,476	1 in 10	23,647	2,493	1 in 9
Utilities	2,668	235	1 in 11	2,698	190	1 in 14
Information	11,859	481	1 in 25	11,690	499	1 in 23
Finance, Insurance, Real Estate, Rent & Leasing	28,180	973	1 in 29	27,694	847	1 in 33
Professional, Scientific & Technical Services	21,093	441	1 in 48	21,822	356	1 in 61
Management of Companies & Enterprises	5,944	67	1 in 89	6,519	101	1 in 65
Administrative Support & Waste Management	36,605	1,963	1 in 19	38,810	2,020	1 in 19
Educational Services	10,474	385	1 in 27	10,914	346	1 in 32
Health Care & Social Assistance	49,726	2,475	1 in 20	50,865	2,549	1 in 20
Arts, Entertainment & Recreation	11,176	749	1 in 15	11,023	593	1 in 19
Accommodation & Food Services	87,951	4,756	1 in 18	86,444	4,663	1 in 19
Other Services	22,925	996	1 in 23	22,881	969	1 in 24
Public Administration	80,919	5,157	1 in 16	83,445	5,237	1 in 16

# 2002 Reported Injuries and Illnesses: Frequency by Industry



## 2002 HAWAII PROCESSED CASES AND COST

**Total cost** stood at \$267.8 million, increasing 6.3 percent or \$15.8 million over last year. Processed cases with cost decreased by 1.9 percent to 43,465 in 2002 from 44,285 in 2001.

In 2002, **medical cost** made up 39.5 percent of the total Workers' Compensation payments compared to 41 percent in 2001. Although the medical cost increased 2.5 percent to \$105,926,606 in 2002, the number of cases with medical costs decreased by approximately 900 cases to 40,339. The average medical cost per case was \$2,626 up 4.8 percent from last year's figure of \$2,505.

Manufacturing had the highest average medical cost per case at \$3,073 followed closely by construction at \$3,033. Professional, scientific, and technical services was next at \$2,948 with finance, insurance, real estate, rental and leasing right behind at \$2,926 per case. Educational services had the lowest average medical cost per case at \$1,952. Management of companies and enterprises was next at \$2,224, followed by arts, entertainment and recreation at \$2,228, and health care and social assistance at \$2,264.



**Permanent partial disability cost** for 2002 totaled \$65,159,217 or 24.3 percent of the total payments. This was 12.6 percent more than 2001's total of \$57,875,459. Cases also increased 10.1 percent from 3,904 to 4,297. The average permanent partial disability cost per case was \$15,164 up 2.3 percent from last year's \$14,825.

Utilities had the highest average permanent partial disability cost per case at \$20,665, followed by management of companies and enterprises at \$17,280, and by administrative and support services and waste management at \$16,694. Educational services had the lowest average permanent partial disability cost per case at \$11,058. Accommodation and food services was next at \$13,218, followed by professional, scientific, and technical services at \$13,690, information services at \$13,785, and natural resources and mining at \$13,875.

**Temporary total disability cost** for 2002 totaled \$65,056,903 or 24.3 percent of the total payments. This was 3.9 percent more than 2001's total of \$62,586,914. Cases also increased 2.3 percent from 14,910 to 15,246. The average temporary total disability cost per case was \$4,267 up 1.6 percent from last year's \$4,198.

### 2002 HAWAII TYPE OF

	TOTAL COST	TEMPORARY TOTAL DISABILITY		TEMPORARY PARTIAL DISABILITY		PERMANENT TOTAL DISABILITY	
		CASES	COST	CASES	COST	CASES	COST
<b>TOTAL</b>	\$267,827,254	15,246	\$65,056,903	1,688	\$2,900,452	794	\$18,395,265
Natural Resources & Mining	4,927,570	271	919,315	27	44,380	27	422,553
Construction	31,061,656	1,389	9,745,661	97	186,499	70	1,774,302
Manufacturing	12,314,533	593	2,617,635	59	83,423	65	1,321,136
Wholesale Trade	8,489,023	522	1,902,675	47	60,430	6	229,539
Retail Trade	25,013,678	1,672	5,048,262	224	368,208	39	993,645
Transportation & Warehousing	23,741,970	1,563	6,591,871	244	372,403	25	576,988
Utilities	2,520,058	81	470,759	6	15,860	9	219,838
Information	4,671,856	218	1,245,351	23	34,870	23	516,941
Fin, Ins, Real Estate, Rent, & Leasing	8,081,656	390	1,512,286	48	80,266	15	574,183
Prof, Scientific, & Technical Svcs	3,132,335	137	682,310	16	30,370	8	187,535
Mgmt of Companies & Enterprises	960,834	40	44,813	1	496	16	398,253
Admin Support, Waste Mgmt	16,121,354	1,100	4,211,211	103	134,143	5	78,943
Educational Services	1,784,549	98	313,560	10	24,277	5	117,286
Health Care & Social Assistance	19,116,750	1,231	4,881,040	214	386,072	23	416,871
Arts, Entertainment, & Recreation	3,968,142	295	870,633	21	17,730	3	61,514
Accommodation and Food Services	28,369,559	2,326	6,663,507	239	381,501	20	369,620
Other Services, except Public Admin	7,698,365	435	1,585,625	35	89,913	14	251,652
Public Administration	47,007,039	2,547	12,850,894	241	545,248	179	4,170,182
Other	18,846,328	338	2,899,495	33	44,363	242	5,714,284

Cost is rounded to the nearest whole dollar and may not add to total.



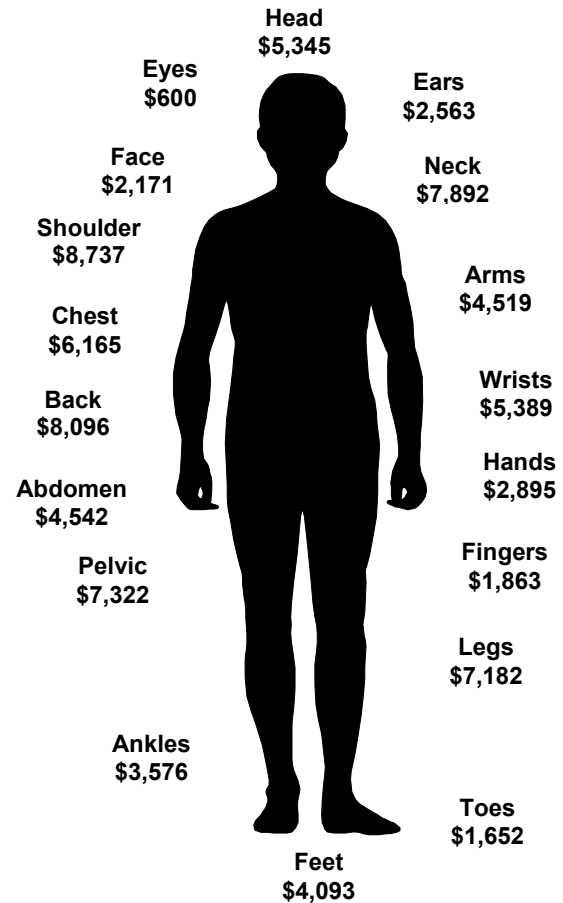
Construction had the highest average temporary total disability cost per case at \$7,016, followed by utilities at \$5,812, information services at \$5,713, and public administration at \$5,046. Management of companies and enterprises had the lowest average temporary total disability cost per case at \$1,120. Accommodation and food services was next at \$2,865, followed by arts, entertainment, and recreation at \$2,951.

The remaining types of payments totaled only 12 percent of the total cost. **Permanent total disability** had 6.9 percent or \$18,395,265 of the total payments. However, permanent total disability had the highest average cost per case at \$23,168. **Vocational rehabilitation** with 2.4 percent or \$6,325,020 in payments was followed by **temporary partial disability** with 1.1 percent or \$2,900,452. **Death payments, disfigurement payments, and attendant services payments** all had less than one percent of the total cost for 2002.

The highest average cost by specific part of body was shoulder at \$8,737. Back was next at \$8,096 followed by neck at \$7,892, pelvic area at \$7,322, and the legs at \$7,182.

Eyes were the lowest average cost by specific body part at \$600. Toes were next at \$1,652, followed by fingers at \$1,863.

### Average Cost by Part of Body



### PAYMENTS BY INDUSTRY

PERMANENT PARTIAL DISABILITY		DEATH		DISFIGUREMENT		VOCATIONAL REHABILITATION		ATTENDANT SERVICES		MEDICAL	
CASES	COST	CASES	COST	CASES	COST	CASES	COST	CASES	COST	CASES	COST
4,297	\$65,159,217	128	\$2,360,809	3,036	\$1,562,803	1,459	\$6,325,020	10	\$140,180	40,339	\$105,926,606
87	1,207,138	4	46,140	70	35,636	27	135,112	1	12,768	786	2,104,528
435	6,781,982	15	271,088	351	212,682	214	1,048,584	1	7,987	3,638	11,032,871
199	3,133,062	6	65,667	146	72,495	73	328,652	2	23,921	1,519	4,668,542
155	2,184,528	9	500,143	129	68,459	49	229,936	1	4,221	1,344	3,309,092
442	6,826,147	1	6,312	350	153,972	161	645,190	0	0	4,439	10,971,942
369	5,657,631	13	252,747	223	102,616	148	539,046	0	0	3,359	9,648,668
45	929,905	0	0	38	23,775	8	27,398	1	19,015	347	813,508
79	1,088,978	1	25,536	53	38,500	21	70,822	0	0	666	1,650,858
145	2,137,030	2	63,711	84	32,676	39	155,863	0	0	1,205	3,525,641
48	657,111	0	0	28	9,125	15	106,493	0	0	495	1,459,391
14	241,918	0	0	15	4,000	0	0	0	0	122	271,354
253	4,223,516	9	95,117	170	85,934	117	465,402	0	0	2,469	6,827,088
41	453,386	0	0	25	7,260	6	23,397	0	0	433	845,383
302	4,828,834	1	15,132	144	64,998	160	598,606	0	0	3,500	7,925,197
68	1,066,117	2	60,007	66	42,393	30	147,581	0	0	764	1,702,167
520	6,873,269	3	63,146	407	186,862	186	776,652	0	0	5,529	13,055,002
135	1,972,589	4	108,229	105	56,275	42	157,115	1	7,660	1,292	3,469,307
727	10,157,100	33	523,374	513	254,785	82	381,249	1	27,072	7,276	18,097,135
233	4,738,976	25	264,460	119	110,360	81	487,922	2	37,536	1,156	4,548,932

## 2002 HAWAII WORKERS' COMPENSATION STATISTICS

### PART OF BODY AFFECTED BY NATURE OF INJURY OR ILLNESS

REPORTED CASES	Part of Body	Eyes	Head, Neck, Excl. Eyes	Trunk, Excl. Back	Back	Fingers	Upper Extremity, Excl. Fingers	Lower Extremity	Body System	Multiple Body Parts	Non-classifiable
<b>NATURE OF INJURY/ILLNESS</b>	<b>29,757</b>	<b>1,295</b>	<b>1,945</b>	<b>2,842</b>	<b>4,951</b>	<b>3,868</b>	<b>4,839</b>	<b>5,205</b>	<b>1,317</b>	<b>3,326</b>	<b>169</b>
<b>INJURIES</b>											
Dislocation	175	0	11	44	48	24	8	37	0	3	0
Fracture	729	0	55	69	15	176	157	245	0	12	0
Sprain, Strain	7,737	0	186	1,089	2,818	208	847	1,963	0	610	16
Cut, Laceration	3,640	56	481	13	5	1,920	787	336	0	40	2
Puncture, Excl. Bites	816	35	27	8	1	385	202	154	0	3	1
Abrasions, Scratches	355	110	28	7	6	18	81	66	0	39	0
Bruises, Contusions	2,067	29	214	259	85	243	347	632	0	252	6
Burn (Chemical)	140	72	17	3	1	1	25	11	0	10	0
Burn (Heat)	727	28	46	22	3	58	423	80	0	61	6
Multiple Injuries	1,185	6	100	29	14	64	77	149	0	744	2
Back Pain	1,689	0	0	0	1,689	0	0	0	0	0	0
Hernia	88	0	0	88	0	0	0	0	0	0	0
<b>ILLNESSES</b>											
Skin Disorders	202	0	12	7	1	14	98	6	0	61	3
Viral Diseases	0	0	0	0	0	0	0	0	0	0	0
Tumors, Cancer	8	0	2	4	0	0	0	0	1	1	0
Symptoms	270	5	27	27	1	0	6	4	187	12	1
Mental Disorders	466	0	0	0	0	0	0	0	466	0	0
Circulatory System Disorder	46	0	11	24	1	0	0	0	9	0	1
Hearing Loss Impairment	54	0	54	0	0	0	0	0	0	0	0
Other Injuries/Illnesses	9,272	952	671	1,143	260	757	1,779	1,522	654	1,476	58
NONCLASSIFIABLE	91	2	3	6	3	0	2	0	0	2	73

### TYPE OF ACCIDENT OR EXPOSURE BY SOURCE OF INJURY OR ILLNESS

REPORTED CASES	Accident or Exposure	Struck By or Struck Against	Caught In, Under, or Between	Rubbed or Abraded	Fall	Bodily Reaction	Over-exertion	Contact With Temp. Extremes	Contact With Harmful Substances	Highway Motor Vehicle Accidents	Other
<b>SOURCE OF INJURY/ILLNESS</b>	<b>29,757</b>	<b>6,444</b>	<b>874</b>	<b>527</b>	<b>4,234</b>	<b>2,378</b>	<b>7,009</b>	<b>752</b>	<b>1,802</b>	<b>599</b>	<b>5,138</b>
Chemical, Chemical Product	722	0	0	0	0	0	0	21	691	0	10
Containers	4,158	635	93	42	93	0	3,049	72	2	0	172
Furniture, Fixtures	1,546	610	86	6	161	0	585	5	2	0	91
Machinery	1,568	565	209	10	65	0	407	99	0	1	212
Building Materials	775	380	30	14	31	0	224	4	0	0	92
Vehicle, Mobile Equip. Parts	302	101	29	1	7	0	144	1	0	0	19
Other Parts and Materials	854	505	31	7	18	0	169	21	2	0	101
Plants, Animals, Minerals	1,549	215	16	4	42	0	113	213	658	0	288
Person, Injured Worker	3,940	8	0	0	0	2,378	54	0	0	0	1,500
Person, Other	1,646	85	12	1	4	0	653	0	88	0	803
Floors, Walkways, Ground	3,632	50	2	4	3,518	0	5	0	0	0	53
Structures, Other Surfaces	904	448	127	6	143	0	114	1	0	0	65
Handtools (Nonpowered)	1,653	1,270	17	6	2	0	256	5	0	0	97
Handtools (Powered)	416	207	11	6	5	0	115	10	0	0	62
Other Tools, Instruments, Equipment	957	275	29	6	38	0	308	6	225	0	70
Highway Vehicle, Motorized	1,331	277	96	6	36	0	108	8	0	586	214
Nonpowered Plant, Vehicles	581	192	45	0	20	0	303	0	0	0	21
Other Vehicles	492	97	30	2	17	0	64	5	0	12	265
Scrap, Waste, Debris	999	429	4	394	5	0	31	17	45	0	74
Other Sources	1,732	95	7	12	29	0	307	264	89	0	929

## 2002 HAWAII WORKERS' COMPENSATION STATISTICS

<b>STATE</b>	<b>REPORTED</b>		<b>PROCESSED</b>		<b>WITH COST</b>		<b>COST</b>		<b>DAYS LOST</b>	
<b>ISLAND</b>	<b>29,757</b>	<b>100.0%</b>	<b>58,515</b>	<b>100.0%</b>	<b>43,465</b>	<b>100.0%</b>	<b>\$267,827,254</b>	<b>100.0%</b>	<b>1,277,863</b>	<b>100.0%</b>
Oahu	19,667	66.1	38,292	65.4	28,273	65.1	176,460,724	65.9	833,266	65.2
East Hawaii	1,678	5.6	3,948	6.8	2,962	6.8	21,316,724	8.0	105,472	8.3
West Hawaii	2,087	7.0	4,104	7.0	3,043	7.0	19,398,895	7.2	102,627	8.0
Maui	4,268	14.3	8,271	14.1	6,164	14.2	37,315,910	13.9	164,844	12.9
Molokai	145	0.5	293	0.5	229	0.5	1,185,562	0.4	6,955	0.5
Lanai	131	0.4	250	0.4	207	0.5	1,004,263	0.4	4,492	0.4
Kauai	1,781	6.0	3,357	5.7	2,587	6.0	11,145,177	4.2	60,207	4.7
<b>INDUSTRY</b>	<b>29,757</b>	<b>100.0%</b>	<b>58,515</b>	<b>100.0%</b>	<b>43,465</b>	<b>100.0%</b>	<b>\$267,827,254</b>	<b>100.0%</b>	<b>1,277,863</b>	<b>100.0%</b>
Natural Resources & Mining	525	1.8	1,064	1.8	849	2.0	4,927,570	1.8	21,725	1.7
Construction	2,577	8.7	4,837	8.3	3,898	9.0	31,061,656	11.6	145,783	11.4
Manufacturing	1,037	3.5	2,045	3.5	1,650	3.8	12,314,533	4.6	51,612	4.0
Wholesale Trade	1,014	3.4	1,862	3.2	1,436	3.3	8,489,023	3.2	41,975	3.3
Retail Trade	3,422	11.5	6,239	10.7	4,711	10.8	25,013,678	9.3	122,035	9.6
Transportation & Warehousing	2,493	8.4	4,700	8.0	3,632	8.4	23,741,970	8.9	120,092	9.4
Utilities	190	0.6	541	0.9	384	0.9	2,520,058	0.9	6,781	0.5
Information	499	1.7	1,005	1.7	721	1.7	4,671,856	1.7	18,628	1.5
Fin, Ins, Real Est, Rent, & Leasing	847	2.9	1,785	3.1	1,286	3.0	8,081,656	3.0	33,975	2.7
Professional, Scientific, & Tech.	356	1.2	728	1.2	520	1.2	3,132,335	1.2	11,450	0.9
Mgmt of Companies & Entrpr	101	0.3	190	0.3	139	0.3	960,834	0.4	1,212	0.1
Administrative, Supopr, & Waste	2,020	6.8	3,540	6.1	2,619	6.0	16,121,354	6.0	97,458	7.6
Educational Services	346	1.2	618	1.1	449	1.0	1,784,549	0.7	6,356	0.5
Health Care & Social Assistance	2,549	8.6	4,852	8.3	3,704	8.5	19,116,750	7.1	99,808	7.8
Arts, Entertainment, & Recreation	593	2.0	1,072	1.8	822	1.9	3,968,142	1.5	20,478	1.6
Accommodation and Food Services	4,663	15.7	7,992	13.7	5,948	13.7	28,369,559	10.6	155,747	12.2
Other Svcs, except Public Adm	969	3.3	1,774	3.0	1,381	3.2	7,698,365	2.9	36,368	2.9
Public Administration	5,237	17.6	11,798	20.2	7,899	18.2	47,007,039	17.6	235,269	18.4
Other	319	1.1	1,873	3.2	1,417	3.3	18,846,328	7.0	51,111	4.0
<b>TYPE OF INSURANCE</b>	<b>29,757</b>	<b>100.0%</b>	<b>58,515</b>	<b>100.0%</b>	<b>43,465</b>	<b>100.0%</b>	<b>\$267,827,254</b>	<b>100.0%</b>	<b>1,277,863</b>	<b>100.0%</b>
Carrier	21,232	71.4	39,552	67.6	30,078	69.2	175,293,881	65.5	863,965	67.6
Self-Insured: Private & Captive	3,794	12.8	7,977	13.6	6,211	14.3	35,144,885	13.1	185,038	14.5
Self-Insured: Government	4,731	15.9	10,986	18.8	7,176	16.5	40,702,778	15.2	228,860	17.9
State of Hawaii	2,363	7.9	5,786	9.9	3,770	8.7	22,100,188	8.3	142,826	11.2
City & County of Honolulu	1,697	5.7	3,459	5.9	2,180	5.0	12,265,927	4.6	50,668	4.0
Hawaii County	255	0.9	803	1.4	534	1.2	3,318,914	1.2	20,978	1.6
Maui County	300	1.0	718	1.2	533	1.2	2,509,378	0.9	11,853	0.9
Kauai County	116	0.4	220	0.4	159	0.4	508,371	0.2	2,535	0.2
Special Compensation Fund	INA	--	INA	--	INA	--	16,685,710	6.2	INA	--
<b>OCCUPATION</b>	<b>29,757</b>	<b>100.0%</b>	<b>58,515</b>	<b>100.0%</b>	<b>43,465</b>	<b>100.0%</b>	<b>\$267,827,254</b>	<b>100.0%</b>	<b>1,277,863</b>	<b>100.0%</b>
Executive, Adm & Managerial	692	2.3	1,783	3.1	1,284	3.0	9,818,511	3.7	34,484	2.7
Professional Specialty	2,107	7.1	4,200	7.2	2,947	6.8	16,283,757	6.1	59,694	4.7
Technical Support	700	2.4	1,347	2.3	975	2.2	6,271,934	2.3	26,886	2.1
Sales	2,058	6.9	3,899	6.7	2,840	6.5	16,476,554	6.2	76,992	6.0
Administrative Support	2,459	8.3	5,085	8.7	3,543	8.2	18,002,452	6.7	85,179	6.7
Services	9,035	30.4	16,932	28.9	12,163	28.0	65,415,534	24.4	375,388	29.4
Agricultural, Forestry & Fishing	1,509	5.1	2,887	4.9	2,232	5.1	11,438,196	4.3	63,377	5.0
Mechanic, Repairer	1,655	5.6	3,381	5.8	2,616	6.0	17,738,989	6.6	69,624	5.5
Construction Trades	2,274	7.6	4,379	7.5	3,455	8.0	26,795,283	10.0	123,574	9.7
Precision Production	425	1.4	930	1.6	731	1.7	4,430,121	1.7	17,836	1.4
Operator, Fabricator, Inspector	651	2.2	1,226	2.1	969	2.2	5,912,845	2.2	23,418	1.8
Transportation, Material Moving	4,306	14.5	8,159	13.9	6,320	14.5	41,694,754	15.6	222,773	17.4
Handler, Helper, Laborer	1,726	5.8	3,436	5.9	2,720	6.3	17,958,498	6.7	89,238	7.0
Nonclassifiable	160	0.5	871	1.5	670	1.5	9,589,825	3.6	9,400	0.7
<b>SEX</b>	<b>29,757</b>	<b>100.0%</b>	<b>58,515</b>	<b>100.0%</b>	<b>43,465</b>	<b>100.0%</b>	<b>\$267,827,254</b>	<b>100.0%</b>	<b>1,277,863</b>	<b>100.0%</b>
Male	18,615	62.6	36,117	61.7	27,267	62.7	172,788,800	64.5	770,517	60.3
Female	11,142	37.4	22,397	38.3	16,198	37.3	95,038,454	35.5	507,346	39.7
Information Not Available	0	0.0	1	0.0	0	0.0	0	0.0	0	0.0

Notes: Cost and percent totals may not add due to rounding.

## 2002 HAWAII WORKERS' COMPENSATION STATISTICS

<b>STATE</b>	<b>REPORTED</b>		<b>PROCESSED</b>		<b>WITH COST</b>		<b>COST</b>		<b>DAYS LOST</b>	
<b>PART OF BODY</b>	<b>29,757</b>	<b>100.0%</b>	<b>58,515</b>	<b>100.0%</b>	<b>43,465</b>	<b>100.0%</b>	<b>\$267,827,254</b>	<b>100.0%</b>	<b>1,277,863</b>	<b>100.0%</b>
Ears	119	0.4	291	0.5	161	0.4	412,593	0.2	1,073	0.1
Face, Excl. Eyes, Ears	742	2.5	1,210	2.1	869	2.0	1,886,661	0.7	8,173	0.6
Eyes	1,295	4.4	1,876	3.2	1,397	3.2	838,443	0.3	2,232	0.2
Head, Excl. Ears, Face, Eyes	703	2.4	1,273	2.2	916	2.1	4,895,614	1.8	18,620	1.5
Neck	381	1.3	891	1.5	658	1.5	5,193,213	1.9	20,394	1.6
Trunk, Excl. Back	2,842	9.6	5,839	10.0	4,348	10.0	35,348,412	13.2	161,479	12.6
Back (Spine/Spinal Cord)	4,951	16.6	10,846	18.5	8,511	19.6	68,901,392	25.7	357,296	28.0
Arms	1,523	5.1	2,786	4.8	2,130	4.9	9,625,627	3.6	46,688	3.7
Wrists	1,215	4.1	2,577	4.4	1,879	4.3	10,125,997	3.8	58,008	4.5
Hands, Excl. Fingers	1,537	5.2	2,580	4.4	1,957	4.5	5,666,471	2.1	27,126	2.1
Fingers	3,868	13.0	6,161	10.5	4,716	10.9	8,784,276	3.3	35,247	2.8
Upper Extremities, Multiple	564	1.9	1,170	2.0	841	1.9	4,847,472	1.8	24,620	1.9
Legs	2,761	9.3	5,714	9.8	4,355	10.0	31,278,657	11.7	143,730	11.3
Ankles	1,178	4.0	1,959	3.4	1,520	3.5	5,435,671	2.0	33,032	2.6
Feet, Excl. Toes	744	2.5	1,317	2.3	984	2.3	4,027,650	1.5	24,576	1.9
Toes	299	1.0	485	0.8	363	0.8	599,569	0.2	3,883	0.3
Lower Extremities, Multiple	223	0.8	454	0.8	341	0.8	1,904,258	0.7	8,638	0.7
Body Systems	1,317	4.4	2,745	4.7	1,197	2.8	9,688,584	3.6	48,578	3.8
Multiple Body Parts	3,326	11.2	7,651	13.1	5,852	13.5	51,474,468	19.2	237,594	18.6
Nonclassifiable	169	0.6	690	1.2	470	1.1	6,892,224	2.6	16,876	1.3
<b>AVERAGE WEEKLY WAGE</b>	<b>29,757</b>	<b>100.0%</b>	<b>58,515</b>	<b>100.0%</b>	<b>43,465</b>	<b>100.0%</b>	<b>\$267,827,254</b>	<b>100.0%</b>	<b>1,277,863</b>	<b>100.0%</b>
\$.01-\$200	1,470	4.9	2,898	5.0	2,233	5.1	12,445,833	4.7	48,569	3.8
\$200.01-\$400	4,817	16.2	9,530	16.3	7,321	16.8	42,551,292	15.9	226,038	17.7
\$400.01-\$600	5,933	19.9	12,073	20.6	9,185	21.1	56,029,941	20.9	307,483	24.1
\$600.01-\$800	3,500	11.8	6,845	11.7	4,959	11.4	33,743,772	12.6	156,267	12.2
\$800.01-\$1000	1,936	6.5	3,789	6.5	2,742	6.3	20,579,613	7.7	89,187	7.0
Over \$1000	1,750	5.9	3,266	5.6	2,434	5.6	15,835,820	5.9	58,812	4.6
Information Not Available	10,351	34.8	20,114	34.4	14,591	33.6	86,640,983	32.4	391,507	30.6
<b>SOURCE OF INJURY OR ILLNESS</b>	<b>29,757</b>	<b>100.0%</b>	<b>58,515</b>	<b>100.0%</b>	<b>43,465</b>	<b>100.0%</b>	<b>\$267,827,254</b>	<b>100.0%</b>	<b>1,277,863</b>	<b>100.0%</b>
Chemical, Chemical Product	722	2.4	1,124	1.9	718	1.7	1,297,280	0.5	3,839	0.3
Containers	4,158	14.0	8,208	14.0	6,452	14.8	39,673,350	14.8	209,047	16.4
Furniture, Fixtures	1,546	5.2	2,850	4.9	2,215	5.1	11,662,258	4.4	59,746	4.7
Machinery	1,568	5.3	2,922	5.0	2,280	5.3	12,880,257	4.8	59,296	4.6
Building Materials	775	2.6	1,498	2.6	1,219	2.8	8,696,876	3.3	38,676	3.0
Vehicle, Mobile Equipment Parts	302	1.0	588	1.0	473	1.1	2,638,409	1.0	14,550	1.1
Other Parts and Materials	854	2.9	1,512	2.6	1,181	2.7	5,028,856	1.9	23,384	1.8
Plants, Animals, Minerals	1,549	5.2	2,440	4.2	1,630	3.8	4,123,376	1.5	23,236	1.8
Person, Injured Worker	3,940	13.2	8,902	15.2	5,955	13.7	44,313,887	16.6	223,848	17.5
Person, Other than Injured Worker	1,646	5.5	3,190	5.5	2,237	5.2	13,614,754	5.1	77,340	6.1
Floors, Walkways, Ground	3,632	12.2	7,640	13.1	6,022	13.9	48,835,102	18.2	239,514	18.7
Structures, Other Surfaces	904	3.0	1,587	2.7	1,195	2.8	5,601,872	2.1	27,559	2.2
Handtools (Nonpowered)	1,653	5.6	2,783	4.8	2,139	4.9	5,498,484	2.1	23,996	1.9
Handtools (Powered)	416	1.4	733	1.3	586	1.4	2,710,119	1.0	13,031	1.0
Other Tools, Instruments, Equipment	957	3.2	1,695	2.9	1,273	2.9	5,384,222	2.0	27,011	2.1
Highway Vehicle, Motorized	1,331	4.5	3,135	5.4	2,384	5.5	20,130,629	7.5	80,356	6.3
Nonpowered Plant Vehicles	581	2.0	1,076	1.8	855	2.0	4,903,059	1.8	25,851	2.0
Other Vehicles	492	1.7	959	1.6	780	1.8	5,242,243	2.0	22,503	1.8
Scrap, Waste, Debris	999	3.4	1,478	2.5	1,102	2.5	1,360,704	0.5	5,266	0.4
Other Sources	1,732	5.8	4,195	7.2	2,769	6.4	24,231,517	9.1	79,814	6.3
<b>MARITAL STATUS</b>	<b>29,757</b>	<b>100.0%</b>	<b>58,515</b>	<b>100.0%</b>	<b>43,465</b>	<b>100.0%</b>	<b>\$267,827,254</b>	<b>100.0%</b>	<b>1,277,863</b>	<b>100.0%</b>
Married	14,804	49.8	30,240	51.7	22,760	52.4	151,071,397	56.4	685,257	53.6
Single	14,117	47.4	26,355	45.0	19,439	44.7	105,558,033	39.4	550,561	43.1
Information Not Available	836	2.8	1,920	3.3	1,266	2.9	11,197,824	4.2	42,045	3.3

Notes: Cost and percent totals may not add due to rounding.

**2002 HAWAII WORKERS' COMPENSATION STATISTICS**

<b>STATE</b>	<b>REPORTED</b>		<b>PROCESSED</b>		<b>WITH COST</b>		<b>COST</b>		<b>DAYS LOST</b>	
<b>EVENT OR EXPOSURE</b>	<b>29,757</b>	<b>100.0%</b>	<b>58,515</b>	<b>100.0%</b>	<b>43,465</b>	<b>100.0%</b>	<b>\$267,827,254</b>	<b>100.0%</b>	<b>1,277,863</b>	<b>100.0%</b>
Struck Against	2,028	6.8	3,296	5.6	2,522	5.8	6,646,666	2.5	30,156	2.4
Struck By	4,416	14.8	7,355	12.6	5,740	13.2	17,175,462	6.4	73,281	5.7
Caught In, Under, or Between	874	2.9	1,501	2.6	1,214	2.8	4,700,767	1.8	20,844	1.6
Rubbed or Abraded	527	1.8	845	1.4	639	1.5	782,854	0.3	3,843	0.3
Other Contact with Object, Equipment	904	3.0	1,314	2.3	1,000	2.3	1,562,675	0.6	6,135	0.5
Falls (From Elevation)	1,460	4.9	3,121	5.3	2,514	5.8	23,971,538	9.0	107,218	8.4
Falls (To Same Level)	2,580	8.7	5,317	9.1	4,136	9.5	29,694,883	11.1	155,503	12.2
Falls (Other)	194	0.7	421	0.7	334	0.8	2,492,748	0.9	10,537	0.8
Bodily Reaction	2,378	8.0	4,855	8.3	3,617	8.3	24,210,476	9.0	121,115	9.5
Overexertion	7,009	23.6	14,932	25.5	11,751	27.0	87,563,243	32.7	456,889	35.8
Repetitive Motion	1,041	3.5	2,471	4.2	1,610	3.7	10,674,352	4.0	61,643	4.8
Heart Attacks and Strokes	45	0.2	154	0.3	49	0.1	1,355,512	0.5	2,083	0.2
Contact (Electrical)	54	0.2	107	0.2	85	0.2	789,517	0.3	5,323	0.4
Contact (Temperature Extremes)	752	2.5	1,183	2.0	851	2.0	1,258,294	0.5	4,686	0.4
Exposure (Noise)	34	0.1	143	0.2	68	0.2	219,402	0.1	35	0.0
Exposure (Harmful Substance)	2,268	7.6	3,818	6.5	1,994	4.6	6,381,142	2.4	38,180	3.0
Accidents (Highway Vehicle)	599	2.0	1,635	2.8	1,211	2.8	11,757,238	4.4	45,545	3.6
Accidents (Non-Highway Vehicle)	218	0.7	479	0.8	403	0.9	3,402,702	1.3	15,999	1.3
Accidents (Other Transportation)	256	0.9	590	1.0	454	1.0	4,745,542	1.8	18,426	1.4
Explosions	27	0.1	54	0.1	40	0.1	141,975	0.1	54	0.0
Assaults, Violent Acts	1,180	4.0	2,144	3.7	1,456	3.4	7,683,163	2.9	40,266	3.2
Other Events/Exposures	254	0.9	674	1.2	462	1.1	4,401,964	1.6	13,791	1.1
Nonclassifiable	659	2.2	2,106	3.6	1,315	3.0	16,215,139	6.1	46,311	3.6
<b>NATURE OF INJURY OR ILLNESS</b>	<b>29,757</b>	<b>100.0%</b>	<b>58,515</b>	<b>100.0%</b>	<b>43,465</b>	<b>100.0%</b>	<b>\$267,827,254</b>	<b>100.0%</b>	<b>1,277,863</b>	<b>100.0%</b>
Dislocation	175	0.6	428	0.7	320	0.7	3,402,439	1.3	14,864	1.2
Fracture	729	2.5	1,741	3.0	1,409	3.2	14,464,951	5.4	61,607	4.8
Sprains, Strains	7,737	26.0	16,216	27.7	12,591	29.0	88,238,076	33.0	436,088	34.1
Amputation	39	0.1	106	0.2	95	0.2	1,279,624	0.5	4,265	0.3
Cut, Laceration	3,640	12.2	5,701	9.7	4,485	10.3	7,369,352	2.8	29,770	2.3
Puncture, Excl. Bites	816	2.7	1,225	2.1	908	2.1	876,633	0.3	3,244	0.3
Other Open Wounds	419	1.4	656	1.1	505	1.2	1,281,855	0.5	4,479	0.4
Abrasions, Scratches	355	1.2	599	1.0	457	1.1	1,179,837	0.4	5,511	0.4
Bruises, Contusions	2,067	7.0	3,622	6.2	2,702	6.2	10,958,362	4.1	55,112	4.3
Other Surface Wounds	771	2.6	1,098	1.9	824	1.9	949,726	0.4	3,803	0.3
Chemical Burns	140	0.5	206	0.4	156	0.4	175,264	0.1	817	0.1
Heat Burns	727	2.4	1,147	2.0	845	1.9	1,282,631	0.5	4,367	0.3
Concussion	37	0.1	103	0.2	80	0.2	683,580	0.3	3,816	0.3
Multiple Injuries	1,185	4.0	2,360	4.0	1,857	4.3	13,941,855	5.2	55,589	4.4
Electric Shock	44	0.2	77	0.1	60	0.1	510,300	0.2	3,609	0.3
Back Pain	1,689	5.7	3,544	6.1	2,762	6.4	21,269,061	7.9	126,241	9.9
Hearing Loss Impairment	54	0.2	185	0.3	90	0.2	349,138	0.1	812	0.1
Circulatory System Disorders	46	0.2	230	0.4	119	0.3	2,221,044	0.8	1,996	0.2
Hernia	88	0.3	161	0.3	110	0.3	444,500	0.2	3,567	0.3
Skin Disorders	202	0.7	343	0.6	219	0.5	452,790	0.2	2,128	0.2
Other Sys Disease, Disorder	575	1.9	1,377	2.4	856	2.0	5,483,557	2.1	31,101	2.4
Infectious and Parasitic Diseases	93	0.3	151	0.3	70	0.2	127,758	0.1	1,100	0.1
Symptoms	270	0.9	496	0.9	192	0.4	922,391	0.3	3,198	0.3
Mental Disorders	466	1.6	1,265	2.2	504	1.2	6,315,235	2.4	37,484	2.9
Exposure	307	1.0	387	0.7	84	0.2	60,604	0.0	602	0.1
Other Injuries/Illnesses	6,995	23.5	14,082	24.1	10,397	23.9	71,297,593	26.6	364,140	28.5
Nonclassifiable	91	0.3	1,009	1.7	768	1.8	12,289,097	4.6	18,553	1.5
<b>AGE</b>	<b>29,757</b>	<b>100.0%</b>	<b>58,515</b>	<b>100.0%</b>	<b>43,465</b>	<b>100.0%</b>	<b>\$267,827,254</b>	<b>100.0%</b>	<b>1,277,863</b>	<b>100.0%</b>
Under 18	179	0.6	273	0.5	204	0.5	337,812	0.1	1,785	0.1
18-24	3,623	12.2	5,858	10.0	4,342	10.0	11,384,086	4.3	62,885	4.9
25-34	7,057	23.7	13,148	22.5	9,775	22.5	52,076,336	19.4	255,023	20.0
35-44	8,116	27.3	16,965	29.0	12,758	29.4	88,764,518	33.1	440,340	34.5
45-54	6,942	23.3	14,413	24.6	10,544	24.3	74,015,573	27.6	335,797	26.3
55-64	3,079	10.4	6,340	10.8	4,751	10.9	33,594,865	12.5	150,210	11.8
Over 64	556	1.9	1,053	1.8	799	1.8	4,859,936	1.8	22,435	1.8
Information Not Available	205	0.7	465	0.8	292	0.7	2,794,128	1.0	9,388	0.7

Notes: Cost and percent totals may not add due to rounding.

## 2002 HAWAII WORKERS' COMPENSATION STATISTICS

OAHU INDUSTRY	REPORTED		PROCESSED		WITH COST		COST		DAYS LOST	
	19,667	100.0%	38,292	100.0%	28,273	100.0%	\$176,460,724	100.0%	833,266	100.0%
Natural Resources & Mining	179	0.9	362	1.0	304	1.1	2,097,320	1.2	8,932	1.1
Construction	1,543	7.9	2,974	7.8	2,440	8.6	19,628,505	11.1	90,349	10.8
Manufacturing	817	4.2	1,540	4.0	1,237	4.4	9,303,385	5.3	42,087	5.1
Wholesale Trade	747	3.8	1,402	3.7	1,072	3.8	6,569,670	3.7	31,030	3.7
Retail Trade	2,246	11.4	4,142	10.8	3,102	11.0	16,623,611	9.4	78,226	9.4
Transportation & Warehousing	1,908	9.7	3,622	9.5	2,780	9.8	18,069,430	10.2	93,934	11.3
Utilities	116	0.6	325	0.9	257	0.9	1,650,593	0.9	4,386	0.5
Information	412	2.1	815	2.1	580	2.1	3,895,045	2.2	16,238	2.0
Fin, Ins, Real Est, Rent, & Leasing	553	2.8	1,149	3.0	828	2.9	4,864,466	2.8	18,762	2.3
Professional, Scientific, & Tech.	248	1.3	488	1.3	349	1.2	2,075,278	1.2	6,118	0.7
Mgmt of Companies & Entrpr	66	0.3	119	0.3	76	0.3	574,818	0.3	815	0.1
Administrative, Supopr, & Waste	1,346	6.8	2,342	6.1	1,731	6.1	10,885,338	6.2	63,278	7.6
Educational Services	286	1.5	522	1.4	381	1.4	1,505,268	0.9	5,399	0.7
Health Care & Social Assistance	1,987	10.1	3,732	9.8	2,848	10.1	14,769,406	8.4	81,021	9.7
Arts, Entertainment, & Recreation	329	1.7	592	1.6	445	1.6	2,239,434	1.3	9,930	1.2
Accommodation and Food Services	2,455	12.5	4,240	11.1	3,054	10.8	14,989,117	8.5	86,875	10.4
Other Svcs, except Public Adm	723	3.7	1,290	3.4	1,005	3.6	5,609,300	3.2	27,113	3.3
Public Administration	3,476	17.7	7,463	19.5	4,889	17.3	29,378,191	16.7	137,377	16.5
Other	230	1.2	1,173	3.1	895	3.2	11,732,549	6.7	31,396	3.8
<b>PART OF BODY</b>	<b>19,667</b>	<b>100.0%</b>	<b>38,292</b>	<b>100.0%</b>	<b>28,273</b>	<b>100.0%</b>	<b>\$176,460,724</b>	<b>100.0%</b>	<b>833,266</b>	<b>100.0%</b>
Ears	85	0.4	200	0.5	110	0.4	285,142	0.2	1,000	0.1
Face, Excl. Eyes, Ears	512	2.6	839	2.2	595	2.1	1,300,542	0.7	6,061	0.7
Eyes	818	4.2	1,199	3.1	902	3.2	618,074	0.4	1,387	0.2
Head, Excl. Ears, Face, Eyes	493	2.5	865	2.3	615	2.2	2,784,884	1.6	11,003	1.3
Neck	261	1.3	583	1.5	432	1.5	3,551,458	2.0	14,327	1.7
Trunk, Excl. Back	1,809	9.2	3,715	9.7	2,768	9.8	22,960,661	13.0	100,785	12.1
Back (Spine/Spinal Cord)	3,206	16.3	6,850	17.9	5,398	19.1	44,741,232	25.4	225,641	27.1
Arms	1,033	5.3	1,830	4.8	1,396	4.9	6,046,167	3.4	29,698	3.6
Wrists	818	4.2	1,742	4.6	1,254	4.4	6,776,537	3.8	36,998	4.4
Hands, Excl. Fingers	1,006	5.1	1,706	4.5	1,300	4.6	3,974,519	2.3	19,375	2.3
Fingers	2,641	13.4	4,141	10.8	3,159	11.2	6,148,003	3.5	25,775	3.1
Upper Extremities, Multiple	380	1.9	813	2.1	568	2.0	3,415,965	1.9	17,444	2.1
Legs	1,817	9.2	3,792	9.9	2,872	10.2	22,019,430	12.5	102,505	12.3
Ankles	737	3.8	1,211	3.2	937	3.3	3,409,904	1.9	20,397	2.5
Feet, Excl. Toes	496	2.5	868	2.3	635	2.3	2,572,418	1.5	14,706	1.8
Toes	203	1.0	330	0.9	242	0.9	474,039	0.3	3,098	0.4
Lower Extremities, Multiple	151	0.8	314	0.8	238	0.8	1,309,052	0.7	5,822	0.7
Body Systems	886	4.5	1,792	4.7	711	2.5	6,372,839	3.6	32,315	3.9
Multiple Body Parts	2,179	11.1	4,961	13.0	3,772	13.3	32,318,293	18.3	149,727	18.0
Nonclassifiable	136	0.7	541	1.4	369	1.3	5,381,564	3.1	15,202	1.8
<b>SOURCE OF INJURY OR ILLNESS</b>	<b>19,667</b>	<b>100.0%</b>	<b>38,292</b>	<b>100.0%</b>	<b>28,273</b>	<b>100.0%</b>	<b>\$176,460,724</b>	<b>100.0%</b>	<b>833,266</b>	<b>100.0%</b>
Chemical, Chemical Product	454	2.3	696	1.8	426	1.5	895,622	0.5	2,229	0.3
Containers	2,765	14.1	5,345	14.0	4,199	14.9	25,836,938	14.6	136,882	16.4
Furniture, Fixtures	1,014	5.2	1,851	4.8	1,415	5.0	7,359,268	4.2	36,166	4.3
Machinery	1,043	5.3	1,905	5.0	1,510	5.3	8,661,994	4.9	39,358	4.7
Building Materials	507	2.6	982	2.6	809	2.9	5,592,902	3.2	24,592	3.0
Vehicle, Mobile Equipment Parts	204	1.0	377	1.0	306	1.1	1,744,424	1.0	8,561	1.0
Other Parts and Materials	570	2.9	1,004	2.6	789	2.8	3,269,947	1.9	15,968	1.9
Plants, Animals, Minerals	926	4.7	1,427	3.7	893	3.2	2,175,680	1.2	12,783	1.5
Person, Injured Worker	2,568	13.1	5,856	15.3	3,893	13.8	30,238,799	17.1	148,325	17.8
Person, Other than Injured Worker	1,215	6.2	2,246	5.9	1,567	5.5	9,432,711	5.4	54,289	6.5
Floors, Walkways, Ground	2,324	11.8	4,902	12.8	3,858	13.7	31,938,365	18.1	157,404	18.9
Structures, Other Surfaces	618	3.1	1,048	2.7	786	2.8	3,509,870	2.0	16,676	2.0
Handtools (Nonpowered)	1,046	5.3	1,708	4.5	1,289	4.6	3,375,654	1.9	15,144	1.8
Handtools (Powered)	270	1.4	458	1.2	359	1.3	1,323,506	0.8	6,466	0.8
Other Tools, Instruments, Equipment	673	3.4	1,179	3.1	869	3.1	3,828,788	2.2	18,363	2.2
Highway Vehicle, Motorized	906	4.6	2,098	5.5	1,611	5.7	13,004,290	7.4	53,007	6.4
Nonpowered Plant Vehicles	395	2.0	758	2.0	601	2.1	3,680,461	2.1	18,552	2.2
Other Vehicles	356	1.8	680	1.8	545	1.9	3,548,620	2.0	13,848	1.7
Scrap, Waste, Debris	636	3.2	935	2.4	690	2.4	865,603	0.5	3,548	0.4
Other Sources	1,177	6.0	2,837	7.4	1,858	6.6	16,177,282	9.2	51,105	6.1

Notes: Cost and percent totals may not add due to rounding.

## 2002 HAWAII WORKERS' COMPENSATION STATISTICS

OAHU	REPORTED		PROCESSED		WITH COST		COST		DAYS LOST	
	19,667	100.0%	38,292	100.0%	28,273	100.0%	\$176,460,724	100.0%	833,266	100.0%
<b>OCCUPATION</b>										
Executive, Adm & Managerial	483	2.5	1,236	3.2	882	3.1	6,439,189	3.7	23,078	2.8
Professional Specialty	1,521	7.7	2,953	7.7	2,079	7.4	11,104,849	6.3	40,021	4.8
Technical Support	472	2.4	909	2.4	663	2.3	4,110,705	2.3	19,012	2.3
Sales	1,323	6.7	2,579	6.7	1,854	6.6	11,442,238	6.5	51,641	6.2
Administrative Support	1,664	8.5	3,492	9.1	2,428	8.6	12,577,295	7.1	56,725	6.8
Services	5,866	29.8	10,760	28.1	7,558	26.7	41,365,420	23.4	240,663	28.9
Agricultural, Forestry & Fishing	730	3.7	1,373	3.6	1,045	3.7	5,638,660	3.2	31,378	3.8
Mechanic, Repairer	1,131	5.8	2,268	5.9	1,755	6.2	12,230,157	6.9	47,854	5.7
Construction Trades	1,485	7.6	2,842	7.4	2,274	8.0	17,192,914	9.7	76,574	9.2
Precision Production	306	1.6	617	1.6	479	1.7	2,745,792	1.6	10,808	1.3
Operator, Fabricator, Inspector	454	2.3	842	2.2	668	2.4	3,853,790	2.2	16,764	2.0
Transportation, Material Moving	2,939	14.9	5,519	14.4	4,303	15.2	29,267,579	16.6	153,771	18.5
Handler, Helper, Laborer	1,189	6.1	2,319	6.1	1,829	6.5	11,940,022	6.8	59,268	7.1
Nonclassifiable	104	0.5	583	1.5	456	1.6	6,552,114	3.7	5,709	0.7
<b>NATURE OF INJURY OR ILLNESS</b>	<b>19,667</b>	<b>100.0%</b>	<b>38,292</b>	<b>100.0%</b>	<b>28,273</b>	<b>100.0%</b>	<b>\$176,460,724</b>	<b>100.0%</b>	<b>833,266</b>	<b>100.0%</b>
Dislocation	103	0.5	273	0.7	209	0.7	2,346,620	1.3	10,393	1.3
Fracture	471	2.4	1,131	3.0	909	3.2	8,873,106	5.0	35,640	4.3
Sprains, Strains	5,066	25.8	10,448	27.3	8,075	28.6	58,004,797	32.9	280,015	33.6
Amputation	26	0.1	65	0.2	58	0.2	794,501	0.5	3,051	0.4
Cut, Laceration	2,393	12.2	3,708	9.7	2,894	10.2	4,862,979	2.8	19,288	2.3
Puncture, Excl. Bites	548	2.8	813	2.1	609	2.2	583,349	0.3	2,334	0.3
Other Open Wounds	262	1.3	423	1.1	318	1.1	954,099	0.5	3,661	0.4
Abrasions, Scratches	229	1.2	395	1.0	296	1.1	694,120	0.4	3,149	0.4
Bruises, Contusions	1,375	7.0	2,341	6.1	1,736	6.1	6,974,607	4.0	35,869	4.3
Other Surface Wounds	494	2.5	705	1.8	529	1.9	579,962	0.3	2,655	0.3
Chemical Burns	85	0.4	126	0.3	100	0.4	125,827	0.1	256	0.0
Heat Burns	481	2.5	752	2.0	551	2.0	726,323	0.4	3,088	0.4
Concussion	27	0.1	72	0.2	56	0.2	410,868	0.2	1,900	0.2
Multiple Injuries	768	3.9	1,542	4.0	1,203	4.3	8,641,895	4.9	34,406	4.1
Electric Shock	28	0.1	49	0.1	37	0.1	339,757	0.2	2,404	0.3
Back Pain	1,090	5.5	2,250	5.9	1,755	6.2	13,622,733	7.7	79,819	9.6
Hearing Loss Impairment	42	0.2	131	0.3	60	0.2	230,127	0.1	757	0.1
Circulatory System Disorders	28	0.1	145	0.4	76	0.3	1,412,651	0.8	1,494	0.2
Hernia	51	0.3	103	0.3	74	0.3	319,150	0.2	2,715	0.3
Skin Disorders	115	0.6	196	0.5	124	0.4	312,026	0.2	1,093	0.1
Other Sys Disease, Disorder	418	2.1	971	2.5	608	2.2	3,680,848	2.1	20,268	2.4
Infectious and Parasitic Diseases	61	0.3	103	0.3	49	0.2	65,544	0.0	756	0.1
Symptoms	203	1.0	345	0.9	129	0.5	654,084	0.4	1,808	0.2
Mental Disorders	272	1.4	805	2.1	317	1.1	4,161,578	2.4	25,377	3.1
Exposure	266	1.4	321	0.8	56	0.2	18,678	0.0	27	0.0
Other Injuries/Illnesses	4,696	23.9	9,345	24.4	6,891	24.4	48,046,035	27.2	246,792	29.6
Nonclassifiable	69	0.4	734	1.9	554	2.0	9,024,462	5.1	14,251	1.7
<b>EVENT OR EXPOSURE</b>	<b>19,667</b>	<b>100.0%</b>	<b>38,292</b>	<b>100.0%</b>	<b>28,273</b>	<b>100.0%</b>	<b>\$176,460,724</b>	<b>100.0%</b>	<b>833,266</b>	<b>100.0%</b>
Struck Against	1,372	7.0	2,190	5.7	1,660	5.9	4,503,694	2.6	19,698	2.4
Struck By	2,943	15.0	4,824	12.6	3,730	13.2	10,622,919	6.0	45,218	5.4
Caught In, Under, or Between	575	2.9	975	2.6	798	2.8	3,345,286	1.9	15,340	1.8
Rubbed or Abraded	377	1.9	581	1.5	431	1.5	538,845	0.3	2,591	0.3
Oth Contact with Object, Eqmnt	590	3.0	866	2.3	656	2.3	1,027,467	0.6	3,753	0.5
Falls (From Elevation)	962	4.9	2,030	5.3	1,646	5.8	15,752,653	8.9	73,810	8.9
Falls (To Same Level)	1,629	8.3	3,366	8.8	2,594	9.2	19,329,744	11.0	99,908	12.0
Falls (Other)	135	0.7	299	0.8	239	0.9	1,806,734	1.0	7,454	0.9
Bodily Reaction	1,536	7.8	3,167	8.3	2,354	8.3	17,174,240	9.7	81,489	9.8
Overexertion	4,595	23.4	9,625	25.1	7,580	26.8	56,999,047	32.3	291,625	35.0
Repetitive Motion	729	3.7	1,732	4.5	1,104	3.9	7,224,285	4.1	41,914	5.0
Heart Attacks and Strokes	27	0.1	99	0.3	34	0.1	903,396	0.5	1,510	0.2
Contact (Electrical)	35	0.2	70	0.2	54	0.2	555,351	0.3	3,929	0.5
Contact (Temperature Extremes)	497	2.5	772	2.0	553	2.0	721,023	0.4	3,443	0.4
Exposure (Noise)	27	0.1	103	0.3	48	0.2	120,709	0.1	4	0.0
Exposure (Harmful Substance)	1,480	7.5	2,472	6.5	1,223	4.3	4,260,770	2.4	24,335	2.9
Accidents (Highway Vehicle)	403	2.1	1,093	2.9	824	2.9	7,297,654	4.1	28,019	3.4
Accidents (Non-Highway Vehicle)	131	0.7	269	0.7	227	0.8	2,108,013	1.2	9,625	1.2
Accidents (Other Transportation)	187	1.0	406	1.1	320	1.1	3,070,441	1.7	12,900	1.6
Explosions	19	0.1	37	0.1	27	0.1	113,938	0.1	17	0.0
Assaults, Violent Acts	805	4.1	1,457	3.8	984	3.5	5,455,213	3.1	28,382	3.4
Other Events/Exposures	162	0.8	425	1.1	289	1.0	2,764,454	1.6	9,643	1.2
Nonclassifiable	451	2.3	1,434	3.7	898	3.2	10,764,849	6.1	28,659	3.4

Notes: Cost and percent totals may not add due to rounding.

## 2002 HAWAII WORKERS' COMPENSATION STATISTICS

MAUI COUNTY INDUSTRY	REPORTED		PROCESSED		WITH COST		COST		DAYS LOST	
	4,544	100.0%	8,814	100.0%	6,600	100.0%	\$39,505,734	100.0%	176,291	100.0%
Natural Resources & Mining	155	3.4	300	3.4	219	3.3	1,228,366	3.1	4,438	2.5
Construction	422	9.3	765	8.7	586	8.9	4,712,798	11.9	21,189	12.0
Manufacturing	75	1.7	188	2.1	146	2.2	958,998	2.4	3,137	1.8
Wholesale Trade	102	2.2	179	2.0	142	2.2	852,768	2.2	4,816	2.7
Retail Trade	504	11.1	880	10.0	657	10.0	3,314,188	8.4	15,625	8.9
Transportation & Warehousing	305	6.7	541	6.1	430	6.5	2,675,020	6.8	10,031	5.7
Utilities	37	0.8	98	1.1	61	0.9	400,952	1.0	867	0.5
Information	40	0.9	76	0.9	54	0.8	272,111	0.7	1,276	0.7
Fin, Ins, Real Est, Rent, & Leasing	125	2.8	294	3.3	214	3.2	1,568,162	4.0	6,876	3.9
Professional, Scientific, & Tech.	39	0.9	117	1.3	82	1.2	709,904	1.8	3,363	1.9
Mgmt of Companies & Entrpr	16	0.4	35	0.4	30	0.5	277,072	0.7	364	0.2
Administrative, Supprt, & Waste	289	6.4	486	5.5	351	5.3	2,006,742	5.1	11,590	6.6
Educational Services	18	0.4	31	0.4	24	0.4	88,488	0.2	143	0.1
Health Care & Social Assistance	180	4.0	363	4.1	280	4.2	1,454,762	3.7	5,916	3.4
Arts, Entertainment, & Recreation	138	3.0	242	2.8	190	2.9	1,032,324	2.6	6,199	3.5
Accommodation and Food Services	1,204	26.5	1,917	21.8	1,484	22.5	6,304,439	16.0	28,438	16.1
Other Svcs, except Public Adm	146	3.2	285	3.2	210	3.2	1,316,319	3.3	5,490	3.1
Public Administration	706	15.5	1,683	19.1	1,190	18.0	6,345,104	16.1	35,924	20.4
Other	43	1.0	334	3.8	250	3.8	3,987,217	10.1	10,609	6.0
<b>PART OF BODY</b>	<b>4,544</b>	<b>100.0%</b>	<b>8,814</b>	<b>100.0%</b>	<b>6,600</b>	<b>100.0%</b>	<b>\$39,505,734</b>	<b>100.0%</b>	<b>176,291</b>	<b>100.0%</b>
Ears	16	0.4	42	0.5	22	0.3	60,105	0.2	16	0.0
Face, Excl. Eyes, Ears	113	2.5	167	1.9	127	1.9	228,195	0.6	676	0.4
Eyes	200	4.4	302	3.4	218	3.3	25,212	0.1	(293)	-0.2
Head, Excl. Ears, Face, Eyes	101	2.2	179	2.0	132	2.0	618,884	1.6	2,542	1.4
Neck	61	1.3	138	1.6	98	1.5	841,161	2.1	3,169	1.8
Trunk, Excl. Back	452	10.0	951	10.8	719	10.9	6,174,101	15.6	25,670	14.6
Back (Spine/Spinal Cord)	813	17.9	1,739	19.7	1,355	20.5	10,040,323	25.4	52,235	29.6
Arms	222	4.9	423	4.8	316	4.8	1,912,482	4.8	7,765	4.4
Wrists	175	3.9	346	3.9	257	3.9	1,169,547	3.0	6,903	3.9
Hands, Excl. Fingers	239	5.3	377	4.3	285	4.3	633,955	1.6	3,211	1.8
Fingers	558	12.3	890	10.1	652	9.9	802,820	2.0	3,105	1.8
Upper Extremities, Multiple	84	1.9	152	1.7	114	1.7	353,187	0.9	2,599	1.5
Legs	444	9.8	887	10.1	682	10.3	4,043,071	10.2	16,917	9.6
Ankles	206	4.5	341	3.9	258	3.9	873,673	2.2	5,493	3.1
Feet, Excl. Toes	121	2.7	213	2.4	161	2.4	650,659	1.7	3,815	2.2
Toes	55	1.2	78	0.9	61	0.9	25,143	0.1	116	0.1
Lower Extremities, Multiple	36	0.8	70	0.8	53	0.8	399,825	1.0	1,568	0.9
Body Systems	142	3.1	318	3.6	154	2.3	1,339,705	3.4	4,674	2.7
Multiple Body Parts	498	11.0	1,148	13.0	896	13.6	8,629,840	21.8	35,592	20.2
Nonclassifiable	8	0.2	53	0.6	40	0.6	683,845	1.7	518	0.3
<b>SOURCE OF INJURY OR ILLNESS</b>	<b>4,544</b>	<b>100.0%</b>	<b>8,814</b>	<b>100.0%</b>	<b>6,600</b>	<b>100.0%</b>	<b>\$39,505,734</b>	<b>100.0%</b>	<b>176,291</b>	<b>100.0%</b>
Chemical, Chemical Product	101	2.2	168	1.9	113	1.7	108,744	0.3	386	0.2
Containers	699	15.4	1,397	15.9	1,091	16.5	7,223,838	18.3	34,141	19.4
Furniture, Fixtures	253	5.6	470	5.3	384	5.8	1,868,406	4.7	9,440	5.4
Machinery	223	4.9	421	4.8	302	4.6	1,978,178	5.0	9,561	5.4
Building Materials	119	2.6	246	2.8	193	2.9	1,486,180	3.8	6,451	3.7
Vehicle, Mobile Equipment Parts	46	1.0	85	1.0	68	1.0	189,769	0.5	2,178	1.2
Other Parts and Materials	137	3.0	230	2.6	176	2.7	852,393	2.2	3,718	2.1
Plants, Animals, Minerals	258	5.7	405	4.6	300	4.6	724,996	1.8	3,732	2.1
Person, Injured Worker	615	13.5	1,298	14.7	889	13.5	6,443,799	16.3	27,825	15.8
Person, Other than Injured Worker	171	3.8	357	4.1	256	3.9	1,608,302	4.1	9,399	5.3
Floors, Walkways, Ground	614	13.5	1,209	13.7	953	14.4	7,178,628	18.2	32,299	18.3
Structures, Other Surfaces	130	2.9	244	2.8	181	2.7	863,578	2.2	3,517	2.0
Handtools (Nonpowered)	280	6.2	469	5.3	354	5.4	870,050	2.2	3,287	1.9
Handtools (Powered)	69	1.5	126	1.4	101	1.5	447,266	1.1	1,225	0.7
Other Tools, Instruments, Equipment	100	2.2	205	2.3	159	2.4	719,790	1.8	4,564	2.6
Highway Vehicle, Motorized	178	3.9	423	4.8	314	4.8	2,210,081	5.6	8,214	4.7
Nonpowered Plant Vehicles	85	1.9	149	1.7	117	1.8	558,281	1.4	3,144	1.8
Other Vehicles	66	1.5	132	1.5	112	1.7	800,716	2.0	4,034	2.3
Scrap, Waste, Debris	152	3.4	239	2.7	172	2.6	215,945	0.6	235	0.1
Other Sources	248	5.5	541	6.1	365	5.5	3,156,794	8.0	8,941	5.1

Notes: Cost and percent totals may not add due to rounding.



## 2002 HAWAII WORKERS' COMPENSATION STATISTICS

<b>MAUI COUNTY</b>	<b>REPORTED</b>		<b>PROCESSED</b>		<b>WITH COST</b>		<b>COST</b>		<b>DAYS LOST</b>	
<b>OCCUPATION</b>	<b>4,544</b>	<b>100.0%</b>	<b>8,814</b>	<b>100.0%</b>	<b>6,600</b>	<b>100.0%</b>	<b>\$39,505,734</b>	<b>100.0%</b>	<b>176,291</b>	<b>100.0%</b>
Executive, Adm & Managerial	91	2.0	255	2.9	190	2.9	1,593,131	4.0	3,730	2.1
Professional Specialty	247	5.4	519	5.9	365	5.5	2,259,490	5.7	9,661	5.5
Technical Support	97	2.1	176	2.0	127	1.9	929,986	2.4	3,597	2.0
Sales	347	7.6	601	6.8	435	6.6	2,502,494	6.3	10,689	6.1
Administrative Support Services	348	7.7	670	7.6	476	7.2	2,190,797	5.6	9,315	5.3
1,513	33.3	2,775	31.5	2,080	31.5	10,002,051	25.3	49,821	28.3	
Agricultural, Forestry & Fishing	296	6.5	567	6.4	436	6.6	2,532,608	6.4	13,674	7.8
Mechanic, Repairer	224	4.9	486	5.5	366	5.6	2,391,833	6.1	8,813	5.0
Construction Trades	355	7.8	687	7.8	525	8.0	4,280,909	10.8	15,942	9.0
Precision Production	53	1.2	143	1.6	117	1.8	1,022,394	2.6	4,020	2.3
Operator, Fabricator, Inspector	81	1.8	148	1.7	113	1.7	940,309	2.4	3,220	1.8
Transportation, Material Moving	625	13.8	1,205	13.7	907	13.7	5,045,652	12.8	30,179	17.1
Handler, Helper, Laborer	245	5.4	488	5.5	390	5.9	2,612,164	6.6	12,914	7.3
Nonclassifiable	22	0.5	94	1.1	73	1.1	1,201,915	3.0	716	0.4
<b>NATURE OF INJURY OR ILLNESS</b>	<b>4,544</b>	<b>100.0%</b>	<b>8,814</b>	<b>100.0%</b>	<b>6,600</b>	<b>100.0%</b>	<b>\$39,505,734</b>	<b>100.0%</b>	<b>176,291</b>	<b>100.0%</b>
Dislocation	31	0.7	67	0.8	44	0.7	439,480	1.1	1,499	0.9
Fracture	118	2.6	265	3.0	213	3.2	2,431,151	6.2	10,753	6.1
Sprains, Strains	1,258	27.7	2,559	29.0	2,001	30.3	13,276,175	33.6	64,881	36.8
Amputation	6	0.1	16	0.2	14	0.2	201,602	0.5	529	0.3
Cut, Laceration	584	12.9	893	10.1	686	10.4	990,564	2.5	4,145	2.4
Puncture, Excl. Bites	123	2.7	182	2.1	124	1.9	124,916	0.3	264	0.2
Other Open Wounds	75	1.7	105	1.2	75	1.1	44,049	0.1	186	0.1
Abrasions, Scratches	63	1.4	103	1.2	77	1.2	265,075	0.7	1,240	0.7
Bruises, Contusions	293	6.5	564	6.4	432	6.6	1,651,446	4.2	7,170	4.1
Other Surface Wounds	112	2.5	165	1.9	123	1.9	154,964	0.4	62	0.0
Chemical Burns	21	0.5	35	0.4	26	0.4	18,518	0.1	188	0.1
Heat Burns	112	2.5	177	2.0	134	2.0	253,717	0.6	328	0.2
Concussion	4	0.1	13	0.2	10	0.2	130,348	0.3	780	0.4
Multiple Injuries	172	3.8	347	3.9	268	4.1	2,078,700	5.3	8,190	4.7
Electric Shock	8	0.2	11	0.1	10	0.2	50,510	0.1	377	0.2
Back Pain	268	5.9	581	6.6	452	6.9	3,711,743	9.4	21,338	12.1
Hearing Loss Impairment	7	0.2	25	0.3	11	0.2	53,403	0.1	0	0.0
Circulatory System Disorders	6	0.1	30	0.3	13	0.2	458,249	1.2	330	0.2
Hernia	11	0.2	21	0.2	12	0.2	34,049	0.1	195	0.1
Skin Disorders	40	0.9	64	0.7	40	0.6	50,069	0.1	452	0.3
Other Sys Disease, Disorder	80	1.8	178	2.0	100	1.5	624,902	1.6	3,085	1.8
Infectious and Parasitic Diseases	8	0.2	14	0.2	8	0.1	36,819	0.1	278	0.2
Symptoms	28	0.6	51	0.6	21	0.3	96,350	0.2	212	0.1
Mental Disorders	56	1.2	141	1.6	61	0.9	1,000,505	2.5	3,838	2.2
Exposure	13	0.3	21	0.2	10	0.2	2,677	0.0	0	0.0
Other Injuries/Illnesses	1,040	22.9	2,088	23.7	1,560	23.6	10,097,942	25.6	44,127	25.0
Nonclassifiable	7	0.2	98	1.1	75	1.1	1,227,810	3.1	1,844	1.1
<b>EVENT OR EXPOSURE</b>	<b>4,544</b>	<b>100.0%</b>	<b>8,814</b>	<b>100.0%</b>	<b>6,600</b>	<b>100.0%</b>	<b>\$39,505,734</b>	<b>100.0%</b>	<b>176,291</b>	<b>100.0%</b>
Struck Against	312	6.9	500	5.7	376	5.7	753,775	1.9	3,982	2.3
Struck By	661	14.6	1,142	13.0	878	13.3	2,849,541	7.2	11,525	6.5
Caught In, Under, or Between	145	3.2	248	2.8	192	2.9	693,963	1.8	2,666	1.5
Rubbed or Abraded	71	1.6	121	1.4	95	1.4	73,470	0.2	258	0.2
Oth Contact with Object, Eqmnt	145	3.2	202	2.3	151	2.3	156,874	0.4	994	0.6
Falls (From Elevation)	230	5.1	485	5.5	382	5.8	3,734,784	9.5	14,361	8.2
Falls (To Same Level)	438	9.6	844	9.6	677	10.3	4,293,628	10.9	21,438	12.2
Falls (Other)	25	0.6	49	0.6	35	0.5	207,351	0.5	999	0.6
Bodily Reaction	394	8.7	769	8.7	569	8.6	3,154,857	8.0	14,790	8.4
Overexertion	1,127	24.8	2,413	27.4	1,902	28.8	14,706,849	37.2	72,726	41.3
Repetitive Motion	148	3.3	313	3.6	211	3.2	1,520,617	3.9	7,201	4.1
Heart Attacks and Strokes	5	0.1	19	0.2	7	0.1	292,911	0.7	23	0.0
Contact (Electrical)	9	0.2	15	0.2	14	0.2	85,377	0.2	377	0.2
Contact (Temperature Extremes)	116	2.6	183	2.1	134	2.0	230,252	0.6	296	0.2
Exposure (Noise)	4	0.1	21	0.2	8	0.1	52,805	0.1	0	0.0
Exposure (Harmful Substance)	299	6.6	515	5.8	301	4.6	803,689	2.0	4,026	2.3
Accidents (Highway Vehicle)	80	1.8	210	2.4	153	2.3	1,341,896	3.4	4,247	2.4
Accidents (Non-Highway Vehicle)	38	0.8	92	1.0	74	1.1	537,721	1.4	3,947	2.2
Accidents (Other Transportation)	32	0.7	79	0.9	58	0.9	752,714	1.9	2,063	1.2
Explosions	3	0.1	8	0.1	5	0.1	8,379	0.0	36	0.0
Assaults, Violent Acts	142	3.1	271	3.1	179	2.7	745,320	1.9	4,391	2.5
Other Events/Exposures	43	1.0	97	1.1	65	1.0	883,828	2.2	2,329	1.3
Nonclassifiable	77	1.7	218	2.5	134	2.0	1,625,133	4.1	3,616	2.1

Notes: Cost and percent totals may not add due to rounding.

## 2002 HAWAII WORKERS' COMPENSATION STATISTICS

HAWAII COUNTY INDUSTRY	REPORTED		PROCESSED		WITH COST		COST		DAYS LOST	
	3,765	100.0%	8,052	100.0%	6,005	100.0%	\$40,715,619	100.0%	208,099	100.0%
Natural Resources & Mining	121	3.2	247	3.1	198	3.3	1,094,129	2.7	5,059	2.4
Construction	487	12.9	871	10.8	691	11.5	5,248,337	12.9	28,302	13.6
Manufacturing	118	3.1	258	3.2	219	3.7	1,872,578	4.6	5,551	2.7
Wholesale Trade	132	3.5	233	2.9	183	3.1	951,012	2.3	5,416	2.6
Retail Trade	426	11.3	797	9.9	600	10.0	3,888,457	9.6	21,251	10.2
Transportation & Warehousing	213	5.7	404	5.0	326	5.4	2,667,699	6.6	14,329	6.9
Utilities	30	0.8	105	1.3	59	1.0	457,678	1.1	1,519	0.7
Information	33	0.9	81	1.0	59	1.0	433,157	1.1	818	0.4
Fin, Ins, Real Est, Rent, & Leasing	89	2.4	215	2.7	151	2.5	1,415,414	3.5	6,781	3.3
Professional, Scientific, & Tech.	44	1.2	88	1.1	63	1.1	317,405	0.8	1,704	0.8
Mgmt of Companies & Entrpr	8	0.2	21	0.3	18	0.3	76,491	0.2	14	0.0
Administrative, Supopr, & Waste	266	7.1	507	6.3	377	6.3	2,572,105	6.3	18,025	8.7
Educational Services	38	1.0	59	0.7	39	0.7	179,804	0.4	812	0.4
Health Care & Social Assistance	246	6.5	514	6.4	381	6.3	2,130,603	5.2	10,545	5.1
Arts, Entertainment, & Recreation	70	1.9	131	1.6	101	1.7	388,253	1.0	2,636	1.3
Accommodation and Food Services	585	15.5	1,140	14.2	860	14.3	4,920,836	12.1	25,678	12.3
Other Svcs, except Public Adm	63	1.7	134	1.7	115	1.9	557,801	1.4	2,538	1.2
Public Administration	758	20.1	1,974	24.5	1,362	22.7	9,036,441	22.2	51,053	24.5
Other	38	1.0	273	3.4	203	3.4	2,507,418	6.2	6,068	2.9
<b>PART OF BODY</b>	<b>3,765</b>	<b>100.0%</b>	<b>8,052</b>	<b>100.0%</b>	<b>6,005</b>	<b>100.0%</b>	<b>\$40,715,619</b>	<b>100.0%</b>	<b>208,099</b>	<b>100.0%</b>
Ears	7	0.2	31	0.4	20	0.3	50,636	0.1	41	0.0
Face, Excl. Eyes, Ears	83	2.2	148	1.8	109	1.8	312,225	0.8	1,328	0.6
Eyes	168	4.5	236	2.9	175	2.9	159,732	0.4	1,118	0.5
Head, Excl. Ears, Face, Eyes	77	2.1	165	2.1	118	2.0	1,236,893	3.0	3,542	1.7
Neck	33	0.9	111	1.4	84	1.4	702,910	1.7	2,681	1.3
Trunk, Excl. Back	399	10.6	828	10.3	595	9.9	4,727,919	11.6	26,645	12.8
Back (Spine/Spinal Cord)	640	17.0	1,604	19.9	1,257	20.9	11,076,945	27.2	62,425	30.0
Arms	189	5.0	380	4.7	294	4.9	1,362,133	3.4	7,514	3.6
Wrists	143	3.8	331	4.1	238	4.0	1,596,032	3.9	10,498	5.0
Hands, Excl. Fingers	194	5.2	342	4.3	258	4.3	869,871	2.1	3,777	1.8
Fingers	460	12.2	775	9.6	611	10.2	1,477,241	3.6	4,859	2.3
Upper Extremities, Multiple	71	1.9	149	1.9	114	1.9	773,485	1.9	3,469	1.7
Legs	324	8.6	702	8.7	538	9.0	4,019,535	9.9	17,938	8.6
Ankles	156	4.1	284	3.5	220	3.7	780,291	1.9	4,867	2.3
Feet, Excl. Toes	87	2.3	162	2.0	130	2.2	562,226	1.4	4,380	2.1
Toes	31	0.8	52	0.7	39	0.7	39,644	0.1	190	0.1
Lower Extremities, Multiple	27	0.7	56	0.7	37	0.6	139,734	0.3	770	0.4
Body Systems	178	4.7	437	5.4	222	3.7	1,453,485	3.6	8,554	4.1
Multiple Body Parts	478	12.7	1,176	14.6	892	14.9	8,595,167	21.1	42,376	20.4
Nonclassifiable	20	0.5	83	1.0	54	0.9	779,515	1.9	1,127	0.5
<b>SOURCE OF INJURY OR ILLNESS</b>	<b>3,765</b>	<b>100.0%</b>	<b>8,052</b>	<b>100.0%</b>	<b>6,005</b>	<b>100.0%</b>	<b>\$40,715,619</b>	<b>100.0%</b>	<b>208,099</b>	<b>100.0%</b>
Chemical, Chemical Product	86	2.3	146	1.8	93	1.6	232,326	0.6	987	0.5
Containers	461	12.2	1,002	12.4	786	13.1	5,154,573	12.7	30,267	14.5
Furniture, Fixtures	176	4.7	343	4.3	266	4.4	1,649,645	4.1	8,737	4.2
Machinery	215	5.7	415	5.2	325	5.4	1,714,967	4.2	7,061	3.4
Building Materials	117	3.1	204	2.5	165	2.8	1,362,388	3.4	5,703	2.7
Vehicle, Mobile Equipment Parts	38	1.0	94	1.2	74	1.2	473,007	1.2	2,504	1.2
Other Parts and Materials	86	2.3	182	2.3	143	2.4	756,345	1.9	2,506	1.2
Plants, Animals, Minerals	237	6.3	414	5.1	285	4.8	951,958	2.3	5,317	2.6
Person, Injured Worker	526	14.0	1,272	15.8	846	14.1	5,794,207	14.2	36,874	17.7
Person, Other than Injured Worker	183	4.9	440	5.5	312	5.2	2,081,277	5.1	11,651	5.6
Floors, Walkways, Ground	474	12.6	1,093	13.6	855	14.2	7,279,068	17.9	37,209	17.9
Structures, Other Surfaces	107	2.8	207	2.6	164	2.7	874,204	2.2	5,572	2.7
Handtools (Nonpowered)	242	6.4	430	5.3	346	5.8	1,000,269	2.5	4,287	2.1
Handtools (Powered)	63	1.7	122	1.5	104	1.7	887,214	2.2	5,147	2.5
Other Tools, Instruments, Equipment	128	3.4	212	2.6	162	2.7	612,510	1.5	2,860	1.4
Highway Vehicle, Motorized	178	4.7	459	5.7	340	5.7	4,301,315	10.6	16,614	8.0
Nonpowered Plant Vehicles	66	1.8	122	1.5	96	1.6	569,361	1.4	3,487	1.7
Other Vehicles	52	1.4	110	1.4	91	1.5	674,834	1.7	4,075	2.0
Scrap, Waste, Debris	134	3.6	199	2.5	156	2.6	248,374	0.6	1,392	0.7
Other Sources	196	5.2	586	7.3	396	6.6	4,097,775	10.1	15,849	7.6

Notes: Cost and percent totals may not add due to rounding.

## 2002 HAWAII WORKERS' COMPENSATION STATISTICS

HAWAII COUNTY OCCUPATION	REPORTED		PROCESSED		WITH COST		COST		DAYS LOST	
	3,765	100.0%	8,052	100.0%	6,005	100.0%	\$40,715,619	100.0%	208,099	100.0%
Executive, Adm & Managerial	84	2.2	217	2.7	159	2.7	1,504,664	3.7	6,592	3.2
Professional Specialty	240	6.4	508	6.3	345	5.8	2,058,079	5.1	7,135	3.4
Technical Support	80	2.1	187	2.3	135	2.3	1,113,905	2.7	4,223	2.0
Sales	250	6.6	488	6.1	363	6.0	1,989,704	4.9	12,221	5.9
Administrative Support Services	314	8.3	664	8.3	442	7.4	2,519,517	6.2	14,615	7.0
Agricultural, Forestry & Fishing	1,063	28.2	2,285	28.4	1,687	28.1	10,469,330	25.7	61,627	29.6
Mechanic, Repairer	326	8.7	678	8.4	522	8.7	2,635,206	6.5	15,361	7.4
Construction Trades	204	5.4	438	5.4	343	5.7	2,332,741	5.7	9,943	4.8
Precision Production	316	8.4	632	7.9	489	8.1	3,941,634	9.7	24,312	11.7
Operator, Fabricator, Inspector	53	1.4	136	1.7	107	1.8	507,239	1.3	2,177	1.1
Transportation, Material Moving	78	2.1	166	2.1	132	2.2	972,885	2.4	3,339	1.6
Handler, Helper, Laborer	522	13.9	1,054	13.1	805	13.4	6,304,928	15.5	31,361	15.1
Nonclassifiable	215	5.7	463	5.8	374	6.2	2,932,524	7.2	14,325	6.9
Nonclassifiable	20	0.5	136	1.7	102	1.7	1,433,263	3.5	868	0.4
NATURE OF INJURY OR ILLNESS	3,765	100.0%	8,052	100.0%	6,005	100.0%	\$40,715,619	100.0%	208,099	100.0%
Dislocation	31	0.8	64	0.8	47	0.8	383,035	0.9	1,664	0.8
Fracture	106	2.8	256	3.2	217	3.6	2,411,564	5.9	11,975	5.8
Sprains, Strains	940	25.0	2,209	27.4	1,712	28.5	12,489,791	30.7	67,146	32.3
Amputation	5	0.1	19	0.2	18	0.3	224,260	0.6	442	0.2
Cut, Laceration	466	12.4	756	9.4	629	10.5	1,197,758	2.9	5,451	2.6
Puncture, Excl. Bites	98	2.6	164	2.0	124	2.1	118,161	0.3	277	0.1
Other Open Wounds	51	1.4	87	1.1	76	1.3	259,203	0.6	484	0.2
Abrasions, Scratches	36	1.0	65	0.8	52	0.9	210,013	0.5	1,086	0.5
Bruises, Contusions	233	6.2	433	5.4	307	5.1	1,807,706	4.4	8,039	3.9
Other Surface Wounds	106	2.8	155	1.9	114	1.9	175,717	0.4	1,060	0.5
Chemical Burns	22	0.6	28	0.4	17	0.3	26,158	0.1	357	0.2
Heat Burns	86	2.3	144	1.8	109	1.8	210,543	0.5	643	0.3
Concussion	5	0.1	9	0.1	5	0.1	42,691	0.1	364	0.2
Multiple Injuries	170	4.5	347	4.3	281	4.7	2,657,669	6.5	10,411	5.0
Electric Shock	8	0.2	15	0.2	11	0.2	92,424	0.2	458	0.2
Back Pain	243	6.5	535	6.6	422	7.0	3,381,785	8.3	20,989	10.1
Hearing Loss Impairment	4	0.1	23	0.3	16	0.3	49,829	0.1	41	0.0
Circulatory System Disorders	7	0.2	38	0.5	22	0.4	255,774	0.6	172	0.1
Hernia	19	0.5	28	0.4	18	0.3	70,045	0.2	488	0.2
Skin Disorders	29	0.8	55	0.7	35	0.6	81,232	0.2	521	0.3
Other Sys Disease, Disorder	48	1.3	157	2.0	99	1.7	905,267	2.2	6,316	3.0
Infectious and Parasitic Diseases	20	0.5	27	0.3	7	0.1	21,210	0.1	66	0.0
Symptoms	31	0.8	78	1.0	32	0.5	128,474	0.3	775	0.4
Mental Disorders	88	2.3	222	2.8	90	1.5	812,467	2.0	6,229	3.0
Exposure	23	0.6	39	0.5	14	0.2	38,998	0.1	575	0.3
Other Injuries/Illnesses	881	23.4	1,949	24.2	1,412	23.5	10,787,237	26.5	59,642	28.7
Nonclassifiable	9	0.2	150	1.9	119	2.0	1,876,608	4.6	2,428	1.2
EVENT OR EXPOSURE	3,765	100.0%	8,052	100.0%	6,005	100.0%	\$40,715,619	100.0%	208,099	100.0%
Struck Against	216	5.7	408	5.1	323	5.4	1,013,688	2.5	4,862	2.3
Struck By	531	14.1	935	11.6	768	12.8	3,036,245	7.5	12,494	6.0
Caught In, Under, or Between	110	2.9	193	2.4	155	2.6	545,312	1.3	2,193	1.1
Rubbed or Abraded	59	1.6	106	1.3	83	1.4	155,656	0.4	985	0.5
Oth Contact with Object, Eqmnt	116	3.1	166	2.1	128	2.1	321,441	0.8	1,197	0.6
Falls (From Elevation)	194	5.2	456	5.7	354	5.9	3,420,886	8.4	14,593	7.0
Falls (To Same Level)	346	9.2	768	9.5	598	10.0	4,490,517	11.0	24,634	11.8
Falls (Other)	25	0.7	56	0.7	45	0.8	442,447	1.1	1,988	1.0
Bodily Reaction	308	8.2	661	8.2	492	8.2	3,001,910	7.4	19,538	9.4
Overexertion	877	23.3	2,037	25.3	1,588	26.4	12,209,480	30.0	71,043	34.1
Repetitive Motion	126	3.4	325	4.0	220	3.7	1,470,993	3.6	9,551	4.6
Heart Attacks and Strokes	7	0.2	23	0.3	5	0.1	124,752	0.3	550	0.3
Contact (Electrical)	10	0.3	19	0.2	14	0.2	111,623	0.3	465	0.2
Contact (Temperature Extremes)	90	2.4	153	1.9	113	1.9	215,375	0.5	643	0.3
Exposure (Noise)	1	0.0	15	0.2	11	0.2	45,783	0.1	31	0.0
Exposure (Harmful Substance)	294	7.8	537	6.7	279	4.7	1,012,822	2.5	7,621	3.7
Accidents (Highway Vehicle)	96	2.6	274	3.4	188	3.1	2,758,039	6.8	11,825	5.7
Accidents (Non-Highway Vehicle)	33	0.9	93	1.2	81	1.4	708,068	1.7	1,656	0.8
Accidents (Other Transportation)	26	0.7	66	0.8	48	0.8	615,694	1.5	2,843	1.4
Explosions	4	0.1	6	0.1	5	0.1	18,457	0.1	1	0.0
Assaults, Violent Acts	174	4.6	309	3.8	219	3.7	1,208,310	3.0	6,626	3.2
Other Events/Exposures	29	0.8	107	1.3	74	1.2	543,773	1.3	1,281	0.6
Nonclassifiable	93	2.5	339	4.2	214	3.6	3,244,346	8.0	11,479	5.5

Notes: Cost and percent totals may not add due to rounding.

## 2002 HAWAII WORKERS' COMPENSATION STATISTICS

KAUAI COUNTY INDUSTRY	REPORTED		PROCESSED		WITH COST		COST		DAYS LOST	
	1,781	100.0%	3,357	100.0%	2,587	100.0%	\$11,145,177	100.0%	60,207	100.0%
Natural Resources & Mining	70	3.9	155	4.6	128	5.0	507,755	4.6	3,296	5.5
Construction	125	7.0	227	6.8	181	7.0	1,472,015	13.2	5,943	9.9
Manufacturing	27	1.5	59	1.8	48	1.9	179,572	1.6	837	1.4
Wholesale Trade	33	1.9	48	1.4	39	1.5	115,573	1.0	713	1.2
Retail Trade	246	13.8	420	12.5	352	13.6	1,187,423	10.7	6,933	11.5
Transportation & Warehousing	67	3.8	133	4.0	96	3.7	329,820	3.0	1,798	3.0
Utilities	7	0.4	13	0.4	7	0.3	10,834	0.1	9	0.0
Information	14	0.8	33	1.0	28	1.1	71,542	0.6	296	0.5
Fin, Ins, Real Est, Rent, & Leasing	80	4.5	127	3.8	93	3.6	233,614	2.1	1,556	2.6
Professional, Scientific, & Tech.	25	1.4	35	1.0	26	1.0	29,748	0.3	265	0.4
Mgmt of Companies & Entrpr	11	0.6	15	0.5	15	0.6	32,454	0.3	19	0.0
Administrative, Supopr, & Waste	119	6.7	205	6.1	160	6.2	657,169	5.9	4,565	7.6
Educational Services	4	0.2	6	0.2	5	0.2	10,990	0.1	2	0.0
Health Care & Social Assistance	136	7.6	243	7.2	195	7.5	761,979	6.8	2,326	3.9
Arts, Entertainment, & Recreation	56	3.1	107	3.2	86	3.3	308,132	2.8	1,713	2.9
Accommodation and Food Services	419	23.5	695	20.7	550	21.3	2,155,167	19.3	14,756	24.5
Other Svcs, except Public Adm	37	2.1	65	1.9	51	2.0	214,945	1.9	1,227	2.0
Public Administration	297	16.7	678	20.2	458	17.7	2,247,303	20.2	10,915	18.1
Other	8	0.5	93	2.8	69	2.7	619,144	5.6	3,038	5.1
<b>PART OF BODY</b>	<b>1,781</b>	<b>100.0%</b>	<b>3,357</b>	<b>100.0%</b>	<b>2,587</b>	<b>100.0%</b>	<b>\$11,145,177</b>	<b>100.0%</b>	<b>60,207</b>	<b>100.0%</b>
Ears	11	0.6	18	0.5	9	0.4	16,710	0.2	16	0.0
Face, Excl. Eyes, Ears	34	1.9	56	1.7	38	1.5	45,699	0.4	108	0.2
Eyes	109	6.1	139	4.1	102	3.9	35,424	0.3	20	0.0
Head, Excl. Ears, Face, Eyes	32	1.8	64	1.9	51	2.0	254,953	2.3	1,533	2.6
Neck	26	1.5	59	1.8	44	1.7	97,685	0.9	217	0.4
Trunk, Excl. Back	182	10.2	345	10.3	266	10.3	1,485,730	13.3	8,379	13.9
Back (Spine/Spinal Cord)	292	16.4	653	19.5	501	19.4	3,042,892	27.3	16,995	28.2
Arms	79	4.4	153	4.6	124	4.8	304,845	2.7	1,711	2.8
Wrists	79	4.4	158	4.7	130	5.0	583,880	5.2	3,609	6.0
Hands, Excl. Fingers	98	5.5	155	4.6	114	4.4	188,126	1.7	763	1.3
Fingers	209	11.7	355	10.6	294	11.4	356,213	3.2	1,508	2.5
Upper Extremities, Multiple	29	1.6	56	1.7	45	1.7	304,835	2.7	1,108	1.8
Legs	176	9.9	333	9.9	263	10.2	1,196,621	10.7	6,370	10.6
Ankles	79	4.4	123	3.7	105	4.1	371,804	3.3	2,275	3.8
Feet, Excl. Toes	40	2.3	74	2.2	58	2.2	242,348	2.2	1,675	2.8
Toes	10	0.6	25	0.7	21	0.8	60,742	0.6	479	0.8
Lower Extremities, Multiple	9	0.5	14	0.4	13	0.5	55,648	0.5	478	0.8
Body Systems	111	6.2	198	5.9	110	4.3	522,554	4.7	3,035	5.0
Multiple Body Parts	171	9.6	366	10.9	292	11.3	1,931,167	17.3	9,899	16.4
Nonclassifiable	5	0.3	13	0.4	7	0.3	47,300	0.4	29	0.1
<b>SOURCE OF INJURY OR ILLNESS</b>	<b>1,781</b>	<b>100.0%</b>	<b>3,357</b>	<b>100.0%</b>	<b>2,587</b>	<b>100.0%</b>	<b>\$11,145,177</b>	<b>100.0%</b>	<b>60,207</b>	<b>100.0%</b>
Chemical, Chemical Product	81	4.6	114	3.4	86	3.3	60,587	0.5	237	0.4
Containers	233	13.1	464	13.8	376	14.5	1,458,000	13.1	7,757	12.9
Furniture, Fixtures	103	5.8	186	5.5	150	5.8	784,938	7.0	5,403	9.0
Machinery	87	4.9	181	5.4	143	5.5	525,118	4.7	3,316	5.5
Building Materials	32	1.8	66	2.0	52	2.0	255,406	2.3	1,930	3.2
Vehicle, Mobile Equipment Parts	14	0.8	32	1.0	25	1.0	231,210	2.1	1,307	2.2
Other Parts and Materials	61	3.4	96	2.9	73	2.8	150,171	1.4	1,192	2.0
Plants, Animals, Minerals	128	7.2	194	5.8	152	5.9	270,741	2.4	1,404	2.3
Person, Injured Worker	231	13.0	476	14.2	327	12.6	1,837,082	16.5	10,824	18.0
Person, Other than Injured Worker	77	4.3	147	4.4	102	3.9	492,464	4.4	2,001	3.3
Floors, Walkways, Ground	220	12.4	436	13.0	356	13.8	2,439,041	21.9	12,602	20.9
Structures, Other Surfaces	49	2.8	88	2.6	64	2.5	354,219	3.2	1,794	3.0
Handtools (Nonpowered)	85	4.8	176	5.2	150	5.8	252,510	2.3	1,278	2.1
Handtools (Powered)	14	0.8	27	0.8	22	0.9	52,133	0.5	193	0.3
Other Tools, Instruments, Equipment	56	3.1	99	3.0	83	3.2	223,133	2.0	1,224	2.0
Highway Vehicle, Motorized	69	3.9	155	4.6	119	4.6	614,945	5.5	2,521	4.2
Nonpowered Plant Vehicles	35	2.0	47	1.4	41	1.6	94,955	0.9	668	1.1
Other Vehicles	18	1.0	37	1.1	32	1.2	218,073	2.0	546	0.9
Scrap, Waste, Debris	77	4.3	105	3.1	84	3.3	30,782	0.3	91	0.2
Other Sources	111	6.2	231	6.9	150	5.8	799,666	7.2	3,919	6.5

Notes: Cost and percent totals may not add due to rounding.

**2002 HAWAII WORKERS' COMPENSATION STATISTICS**

**KAUAI COUNTY**

	REPORTED		PROCESSED		WITH COST		COST		DAYS LOST	
OCCUPATION	1,781	100.0%	3,357	100.0%	2,587	100.0%	\$11,145,177	100.0%	60,207	100.0%
Executive, Adm & Managerial	34	1.9	75	2.2	53	2.1	281,527	2.5	1,084	1.8
Professional Specialty	99	5.6	220	6.6	158	6.1	861,339	7.7	2,877	4.8
Technical Support	51	2.9	75	2.2	50	1.9	117,338	1.1	54	0.1
Sales	138	7.8	231	6.9	188	7.3	542,118	4.9	2,441	4.1
Administrative Support Services	133	7.5	259	7.7	197	7.6	714,844	6.4	4,524	7.5
Agricultural, Forestry & Fishing	593	33.3	1,112	33.1	838	32.4	3,578,735	32.1	23,277	38.7
Mechanic, Repairer	157	8.8	269	8.0	229	8.9	631,723	5.7	2,964	4.9
Construction Trades	96	5.4	189	5.6	152	5.9	784,258	7.0	3,014	5.0
Precision Production	118	6.6	218	6.5	167	6.5	1,379,825	12.4	6,746	11.2
Operator, Fabricator, Inspector	13	0.7	34	1.0	28	1.1	154,696	1.4	831	1.4
Transportation, Material Moving	38	2.1	70	2.1	56	2.2	145,861	1.3	95	0.2
Handler, Helper, Laborer	220	12.4	381	11.4	305	11.8	1,076,595	9.7	7,462	12.4
Nonclassifiable	77	4.3	166	4.9	127	4.9	473,788	4.3	2,731	4.5
	14	0.8	58	1.7	39	1.5	402,533	3.6	2,107	3.5
NATURE OF INJURY OR ILLNESS	1,781	100.0%	3,357	100.0%	2,587	100.0%	\$11,145,177	100.0%	60,207	100.0%
Dislocation	10	0.6	24	0.7	20	0.8	233,305	2.1	1,308	2.2
Fracture	34	1.9	89	2.7	70	2.7	749,131	6.7	3,239	5.4
Sprains, Strains	473	26.6	1,000	29.8	803	31.0	4,467,313	40.1	24,046	39.9
Amputation	2	0.1	6	0.2	5	0.2	59,262	0.5	243	0.4
Cut, Laceration	197	11.1	344	10.3	276	10.7	318,050	2.9	886	1.5
Puncture, Excl. Bites	47	2.6	66	2.0	51	2.0	50,207	0.5	369	0.6
Other Open Wounds	31	1.7	41	1.2	36	1.4	24,504	0.2	148	0.3
Abrasions, Scratches	27	1.5	36	1.1	32	1.2	10,629	0.1	36	0.1
Bruises, Contusions	166	9.3	284	8.5	227	8.8	524,604	4.7	4,034	6.7
Other Surface Wounds	59	3.3	73	2.2	58	2.2	39,083	0.4	26	0.0
Chemical Burns	12	0.7	17	0.5	13	0.5	4,761	0.0	16	0.0
Heat Burns	48	2.7	74	2.2	51	2.0	92,048	0.8	308	0.5
Concussion	1	0.1	9	0.3	9	0.4	99,673	0.9	772	1.3
Multiple Injuries	75	4.2	124	3.7	105	4.1	563,592	5.1	2,582	4.3
Electric Shock	0	0.0	2	0.1	2	0.1	27,609	0.3	370	0.6
Back Pain	88	4.9	178	5.3	133	5.1	552,800	5.0	4,095	6.8
Hearing Loss Impairment	1	0.1	6	0.2	3	0.1	15,779	0.1	14	0.0
Circulatory System Disorders	5	0.3	17	0.5	8	0.3	94,370	0.9	0	0.0
Hernia	7	0.4	9	0.3	6	0.2	21,256	0.2	169	0.3
Skin Disorders	18	1.0	28	0.8	20	0.8	9,463	0.1	62	0.1
Other Sys Disease, Disorder	29	1.6	71	2.1	49	1.9	272,541	2.5	1,432	2.4
Infectious and Parasitic Diseases	4	0.2	7	0.2	6	0.2	4,185	0.0	0	0.0
Symptoms	8	0.5	22	0.7	10	0.4	43,482	0.4	403	0.7
Mental Disorders	50	2.8	97	2.9	36	1.4	340,685	3.1	2,040	3.4
Exposure	5	0.3	6	0.2	4	0.2	251	0.0	0	0.0
Other Injuries/Illnesses	378	21.2	700	20.9	534	20.6	2,366,379	21.2	13,579	22.6
Nonclassifiable	6	0.3	27	0.8	20	0.8	160,217	1.4	30	0.1
EVENT OR EXPOSURE	1,781	100.0%	3,357	100.0%	2,587	100.0%	\$11,145,177	100.0%	60,207	100.0%
Struck Against	128	7.2	198	5.9	163	6.3	375,510	3.4	1,614	2.7
Struck By	281	15.8	454	13.5	364	14.1	666,756	6.0	4,044	6.7
Caught In, Under, or Between	44	2.5	85	2.5	69	2.7	116,206	1.0	645	1.1
Rubbed or Abraded	20	1.1	37	1.1	30	1.2	14,883	0.1	9	0.0
Oth Contact with Object, Eqmnt	53	3.0	80	2.4	65	2.5	56,893	0.5	191	0.3
Falls (From Elevation)	74	4.2	150	4.5	132	5.1	1,063,215	9.5	4,454	7.4
Falls (To Same Level)	167	9.4	339	10.1	267	10.3	1,580,994	14.2	9,523	15.8
Falls (Other)	9	0.5	17	0.5	15	0.6	36,215	0.3	96	0.2
Bodily Reaction	140	7.9	258	7.7	202	7.8	879,469	7.9	5,298	8.8
Overexertion	410	23.0	857	25.5	681	26.3	3,647,867	32.7	21,495	35.7
Repetitive Motion	38	2.1	101	3.0	75	2.9	458,457	4.1	2,977	4.9
Heart Attacks and Strokes	6	0.3	13	0.4	3	0.1	34,452	0.3	0	0.0
Contact (Electrical)	0	0.0	3	0.1	3	0.1	37,166	0.3	552	0.9
Contact (Temperature Extremes)	49	2.8	75	2.2	51	2.0	91,644	0.8	304	0.5
Exposure (Noise)	2	0.1	4	0.1	1	0.0	104	0.0	0	0.0
Exposure (Harmful Substance)	195	11.0	294	8.8	191	7.4	303,861	2.7	2,198	3.7
Accidents (Highway Vehicle)	20	1.1	58	1.7	46	1.8	359,649	3.2	1,454	2.4
Accidents (Non-Highway Vehicle)	16	0.9	25	0.7	21	0.8	48,900	0.4	771	1.3
Accidents (Other Transportation)	11	0.6	39	1.2	28	1.1	306,693	2.8	620	1.0
Explosions	1	0.1	3	0.1	3	0.1	1,201	0.0	0	0.0
Assaults, Violent Acts	59	3.3	107	3.2	74	2.9	274,321	2.5	867	1.4
Other Events/Exposures	20	1.1	45	1.3	34	1.3	209,908	1.9	538	0.9
Nonclassifiable	38	2.1	115	3.4	69	2.7	580,812	5.2	2,557	4.3

Notes: Cost and percent totals may not add due to rounding.

## 2002 HAWAII REPORTED FATALITIES

	STATE	% of TOTAL	OAHU	HAWAII COUNTY	MAUI COUNTY	KAUAI
<b>TOTAL</b>	31	100.0%	18	5	4	4
<b>SEX</b>						
Male	25	80.6	15	4	4	2
Female	6	19.4	3	1	0	2
<b>MARITAL STATUS</b>						
Married	19	61.3	10	2	4	3
Single	11	35.5	7	3	0	1
INA	1	3.2	1	0	0	0
<b>AGE</b>						
Under 18	0	0.0	0	0	0	0
18-24	1	3.2	1	0	0	0
25-34	1	3.2	0	0	1	0
35-44	4	12.9	2	1	1	0
45-54	11	35.5	6	2	1	2
55-64	10	32.3	7	1	0	2
Over 64	4	12.9	2	1	1	0
<b>INDUSTRIAL CLASSIFICATION</b>						
Agriculture, Forestry	1	3.2	0	1	0	0
Construction	4	12.9	2	0	2	0
Wholesale Trade	1	3.2	1	0	0	0
Retail Trade	3	9.7	1	0	0	2
Transportation & Warehousing	6	19.4	5	1	0	0
Utilities	1	3.2	0	0	0	1
Administrative Support & Waste Management	5	16.1	3	2	0	0
Educational Services	1	3.2	1	0	0	0
Health Care & Social Assistance	1	3.2	1	0	0	0
Arts, Entertainment & Recreation	2	6.5	0	1	1	0
Accommodation & Food Service	3	9.7	2	0	1	0
Public Administration	3	9.7	2	0	0	1
<b>OCCUPATION</b>						
Executive, Administrative & Managerial	1	3.2	1	0	0	0
Professional Specialty	1	3.2	0	1	0	0
Technical Support	1	3.2	1	0	0	0
Sales	3	9.7	1	0	0	2
Administrative Support	2	6.5	1	1	0	0
Protective Services	3	9.7	1	1	1	0
Other Services	4	12.9	3	1	0	0
Other Agriculture & Related	2	6.5	0	0	1	1
Mechanic, Repairer	1	3.2	0	0	0	1
Construction Trades	2	6.5	0	0	2	0
Machine Operator	2	6.5	2	0	0	0
Transportation, Material Moving	6	19.4	5	1	0	0
Handler, Helper, Laborer	2	6.5	2	0	0	0
INA	1	3.2	1	0	0	0
<b>CAUSE</b>						
Heart Attack/Stroke	20	64.5	12	3	2	3
Transportation Accidents	7	22.6	4	2	1	0
Assaults, Violent Acts	2	6.5	1	0	1	0
Struck By	2	6.5	1	0	0	1

Note: Percentages may not add due to rounding.

## 2002 HEARINGS AND DECISIONS ISSUED

	State	Oahu	East Hawaii	West Hawaii	Maui	Kauai
<b>HEARINGS</b>	2806	1447	388	248	481	242
<b>DECISIONS ISSUED</b>	9889	6150	966	683	1463	627
Act 59 Settlement	988	606	93	76	180	33
Attorney Fees	1878	1280	164	85	302	47
Denial	298	176	44	37	29	12
Disfigurement	1294	725	100	113	149	207
Fatality	18	9	3	2	4	0
Medical	718	315	89	98	138	78
Permanent Partial	2787	1895	245	163	366	118
Permanent Total	30	20	4	0	4	2
Temporary Partial	12	7	0	2	2	1
Temporary Total	469	260	67	26	51	65
Benefit Adjustments	29	22	5	1	1	0
Other	1368	835	152	80	237	64

## WORKERS' COMPENSATION MAXIMUM WEEKLY WAGE BASE AND MAXIMUM WEEKLY BENEFIT AMOUNT HISTORY

Year	Maximum Weekly Wage Base	Maximum Weekly Benefit Amount	Year	Maximum Weekly Wage Base	Maximum Weekly Benefit Amount
1975	\$232.50	\$155.00	1989	\$537.00	\$358.00
1976	\$250.50	\$167.00	1990	\$574.47	\$383.00
1977	\$268.50	\$179.00	1991	\$617.97	\$412.00
1978	\$283.50	\$189.00	1992	\$655.47	\$437.00
1979	\$300.00	\$200.00	1993	\$689.97	\$460.00
1980	\$322.50	\$215.00	1994	\$721.46	\$481.00
1981	\$352.50	\$235.00	1995	\$736.46	\$491.00
1982	\$378.00	\$252.00	1996	\$743.96	\$496.00
1983	\$399.00	\$266.00	1997	\$751.46	\$501.00
1984	\$421.50	\$281.00	1998	\$761.96	\$508.00
1985	\$436.50	\$291.00	1999	\$778.46	\$519.00
1986	\$448.50	\$299.00	2000	\$793.46	\$529.00
1987	\$477.00	\$318.00	2001	\$820.46	\$547.00
1988	\$501.00	\$334.00	2002	\$845.96	\$564.00

## DIGEST OF THE WORKERS' COMPENSATION LAW

<b>Purpose</b>	To provide medical, rehabilitation, income, and indemnity benefits to workers suffering work-connected injuries, or in the event of death, income and indemnity benefits to their dependents.
<b>Coverage</b>	All workers except: Federal government workers. Workers for nonprofit organizations if in voluntary or unpaid capacity. Students working for a school, college, or university in return for board, lodging, or tuition. Ordained members of the church. Certain domestic workers. Certain 25% stockholders of a corporation. Owners with 50% or more of a corporation. Real estate salespersons or brokers paid solely by commission.
<b>Eligibility Requirements for Benefits</b>	Employee suffering personal injury by accident arising out of and in the course of employment, or by disease proximately caused by or resulting from the nature of the employment.
<b>Disqualification from Benefits</b>	Injury incurred by willful self-infliction or to another by actively engaging in any unprovoked non-work related physical altercation other than in self-defense or by intoxication. Mental stress claims resulting solely from disciplinary action taken in good faith by employer.
<b>Waiting Period</b>	Three days.
<b>Weekly Benefits</b>	66-2/3% of the worker's average weekly wages for permanent total, partial, and temporary total disabilities. 66-2/3% of difference of wages before and after injury for temporary partial disability.
<b>Benefit Provisions - 2002</b>	Minimum weekly benefits - \$141.00 Maximum weekly benefits - \$564.00 Maximum weekly amount used to compute weekly benefits for surviving spouse - \$845.96 Funeral expenses - \$5,640.00 Burial expenses - \$2,820.00
<b>Duration</b>	Medical - as reasonably needed or as the nature or injury requires. Death - various duration for beneficiaries. Temporary total disability - duration of the disability. Permanent total disability - for life.
<b>Appeal Provisions</b>	Within 20 days after a decision has been sent to parties concerned.
<b>Statute of Limitation for Filing a Claim</b>	Within two years after date of injury in which the effects have manifest and within five years after date of accident or occurrence of injury.
<b>Employer's Penalties and Fines</b>	\$250 or \$10 for each employee each day for failure to give security for compensation. Up to \$5,000 for refusing or neglecting to give required notice or to make required reports. 20% of unpaid compensation for default in payment.
<b>Method of Insuring</b>	Through insurance carriers or approved employer self-financing.
<b>Financing</b>	Cost of insurance paid by employer.
<b>Funds</b>	Special Compensation Fund  <b>Income:</b> Fines and penalties. Death benefits where there are no dependents. Special assessments.  <b>Outgo:</b> To pay benefits to injured employee whose injury occurred prior to 1973 and where the employer or carrier has paid the maximum aggregate, for concurrent employment benefits and for preexisting condition benefits. To reimburse employees/employers effective January 1, 1992 and January 1 of every tenth year thereafter, for the cost of supplemental allowance for permanent total disability payments to employees injured before January 1, 1992 and January 1 of every tenth year thereafter. To injured employee or dependents where employer is in default in payment of compensation. For litigation expense incurred by or on behalf of the Special Compensation Fund.  <b>Solvency:</b> When cash balance falls below an amount determined by the Director to be insufficient to meet the fund's current and projected obligation, a levy based on a percentage of gross premiums and a special charge against self-insured until cash balance equals or exceeds amount determined by the director to be sufficient to meet the fund's current and projected obligations.



## DEFINITIONS

<b>Attendant Services</b>	Cost of services of an attendant for a totally disabled employee.
<b>Average Cost Per Case</b>	Total compensation costs divided by the number of processed cases with cost.
<b>Compensation Orders</b>	Decisions made on controverted cases, on awarding of permanent partial disability and disfigurement, and on reopening cases.
<b>Costs</b>	All payments accorded to a claimant to include disability, death, disfigurement, vocational rehabilitation, attendant services, and medical payments.
<b>Days Lost</b>	Number of compensated days in which injured workers were not able to work because of temporary total disability. This excludes the three-day waiting period.
<b>Disfigurement</b>	Scar, deformity, discoloration, or other disfiguring consequences resulting from the injury or caused by medical, surgical, and hospital treatment of the employee. This is separate from permanent partial disability.
<b>Employment</b>	That portion of the work force covered by Workers' Compensation law. Annual average taken from the "Employment and Payrolls in Hawaii" report excluding federal government employees.
<b>Event or Exposure</b>	Identifies the circumstance, which directly resulted in the injury or illness.
<b>Industry</b>	Identifies employers by the major type of activity in which they are engaged.
<b>Medical</b>	Physicians and hospital costs and costs for services and supplies.
<b>Nature of Injury or Illness</b>	Identifies the injury or illness in terms of its principal physical characteristic.
<b>Occupation</b>	Identifies the nature of work of the employee.
<b>Part of Body</b>	Identifies the part of the worker's body directly affected by the injury or illness.
<b>Permanent Partial Disability</b>	Injury or illness which results in the complete loss or loss of any member or part of the body or any permanent impairment of functions of the body or part thereof, regardless of any pre-existing disability.
<b>Permanent Total Disability</b>	Any injury or illness other than death, which permanently and totally incapacitates an employee from following any gainful occupation.
<b>Processed Cases</b>	Cases, which have been subject to screening procedures, the injury or illness medically evaluated, and all medical costs and workers' compensation payments totaled. Includes injuries and illnesses, which occurred in the report year or prior years.
<b>Reported Injuries and Illnesses (Reported Cases)</b>	All injuries and illnesses reported to the Disability Compensation Division. These reported injuries or illnesses may not have occurred during the report year.
<b>Reported Fatalities</b>	Any death resulting from an on-the-job injury or illness reported to the Disability Compensation Division.
<b>Source of Injury or Illness</b>	Identifies the object, substance, exposure, or bodily motion, which directly produced or inflicted the injury or illness.
<b>Temporary Partial Disability</b>	A work injury or illness which causes partial rather than total disability for temporary periods. The injured worker is paid a weekly benefit amount of 66-2/3 percent of the difference between his average weekly wages before the injury and his weekly earnings thereafter for the duration of the disability.
<b>Temporary Total Disability</b>	A common type of disability where the work injury or illness causes total disability for temporary periods. The employer or insurance carrier, for the duration of the disability, but not including the first three days, pays the injured worker a weekly benefit amount of 66-2/3 percent of his average weekly wages, but not more than the maximum weekly benefit amount nor less than the minimum weekly benefit amount, if his average weekly wages are less than the minimum weekly benefit amount, at a rate of 100 percent of his average weekly wages.
<b>Vocational Rehabilitation</b>	Cost of physical and vocational rehabilitation services.

## TECHNICAL NOTES

The Workers' Compensation Data Book is based on the annual accumulation of data in the State of Hawaii, Disability Compensation database.

1. The following coding systems and locally revised versions were used to categorize data:
  - a) Industrial attachment is determined by the principal activity of the employer as defined in the **North American Industry Classification System 2002 (NAICS)**. The new NAICS industry groupings better reflect the workings of the U.S. economy, particularly in the services sector. NAICS, developed using a production oriented conceptual framework, groups establishments into industries based on the activity in which they are primarily engaged. It is not an update of the Standard Industrial Classification (SIC) system. NAICS focuses on how products and services are created. More information on NAICS is available at the U.S. Census Bureau website at <http://www.census.gov/epcd/www/naics.html>.
  - b) Codes and definitions used to categorize Nature of Injury or Illness, Part of Body Affected, Source of Injury or Illness, and Event or Exposure were modeled after the **1992 Bureau of Labor Statistics (BLS) Occupational Injury and Illness Classification Structures (OIICS)**. Starting with 1996 data, BLS OIICS data codes were locally modified to 2 digits instead of 4 digits, making the data less detailed.
  - c) Occupational groups are based on the **1990 Alphabetical Index of Industries and Occupations**, developed and published by the Bureau of the Census, Washington, D.C., U.S. Government Printing Office. Starting with 1996 data, the occupation classifications were locally modified, making the data less detailed.
2. From 1999, the employment data source used in the **Worker's Compensation Data Book** has been changed. Instead of the **Labor Force Data Book** employment we are using the **Employment and Payrolls in Hawaii** statistics. Employment data from the later publication may be more in line with workers covered under the Workers' Compensation program. Caution should be taken when reviewing the employment and frequency data for trend analysis prior to 1999.
3. From 2000, the table Hearings and Decisions Issued (previously called Compensation Orders Issued and Number of Hearings) has changed to include Act 59 settlements and attorney fees. The combined category Permanent Partial & Disfigurement no longer exists. Figures are reported under the category with the highest severity. For example: a case with disability payments and disfigurement award would be counted in the disability category and not in disfigurement.