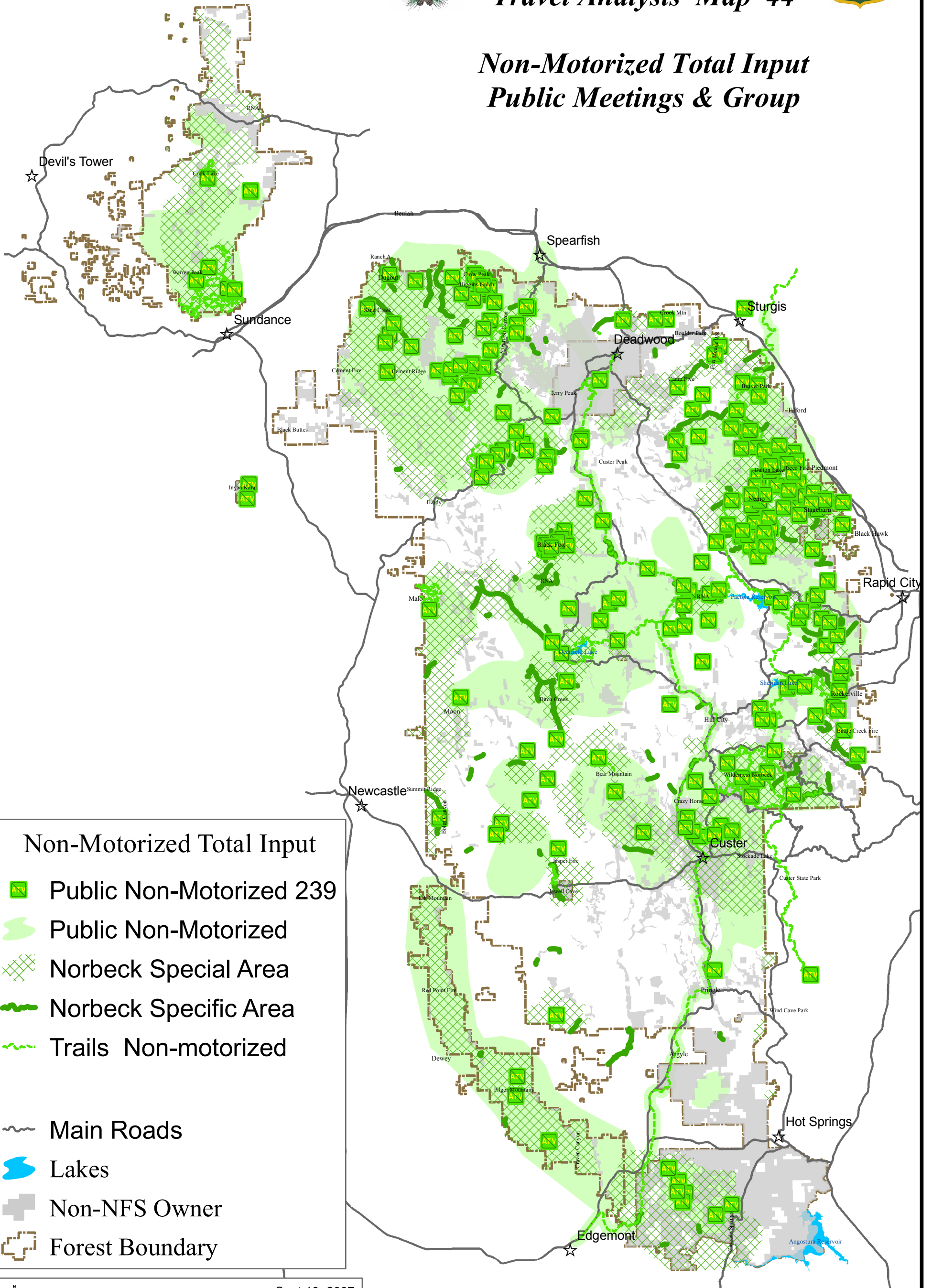




Black Hills National Forest Travel Analysis Map 44



Non-Motorized Total Input Public Meetings & Group



Non-Motorized Total Input

- Public Non-Motorized 239
- Public Non-Motorized
- Norbeck Special Area
- Norbeck Specific Area
- Trails Non-motorized
- Main Roads
- Lakes
- Non-NFS Owner
- Forest Boundary

Sept 10, 2007

The Forest Service uses the most current and complete data available. GIS data and product accuracy may vary. They may be developed from sources of differing accuracy, accurate only at certain scales, based on modeling or interpretation, incomplete while being created or revised, etc. Using GIS products for purposes other than those for which they were created, may yield inaccurate or misleading results. The Forest Service reserves the right to correct, update, modify, or replace, GIS products without notification. For more information, contact the Black Hills National Forest at (605) 673-9200.