

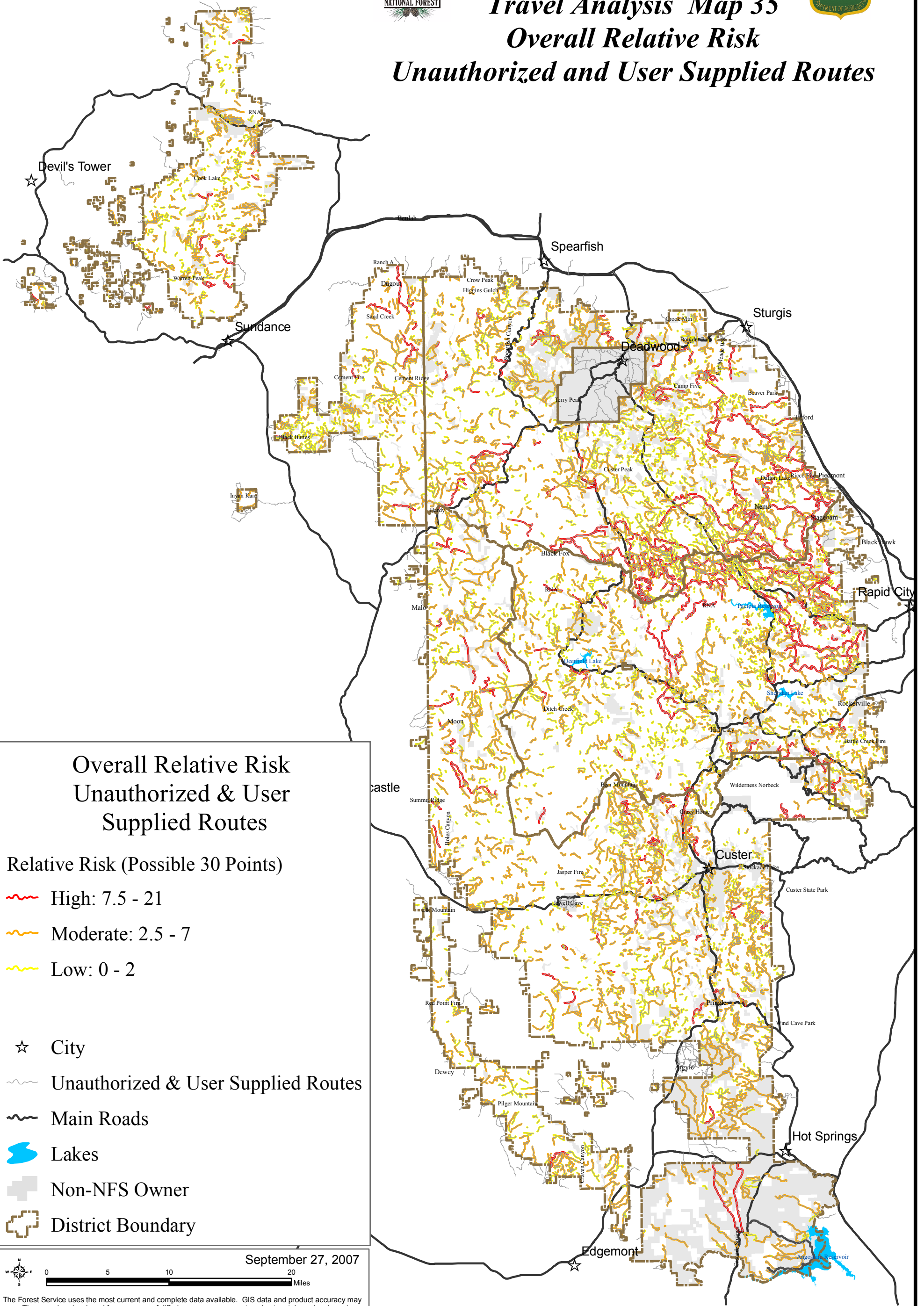


# Black Hills National Forest

## Travel Analysis Map 35

### Overall Relative Risk

### Unauthorized and User Supplied Routes



### Overall Relative Risk Unauthorized & User Supplied Routes

Relative Risk (Possible 30 Points)

High: 7.5 - 21

Moderate: 2.5 - 7

Low: 0 - 2

City

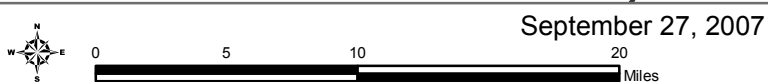
Unauthorized & User Supplied Routes

Main Roads

Lakes

Non-NFS Owner

District Boundary



The Forest Service uses the most current and complete data available. GIS data and product accuracy may vary. They may be: developed from sources of differing accuracy, accurate only at certain scales, based on modeling or interpretation, incomplete while being created or revised, etc. Using GIS products for purposes other than those for which they were created, may yield inaccurate or misleading results. The Forest Service reserves the right to correct, update, modify, or replace, GIS products without notification. For more information, contact the Black Hills National Forest at (605) 673-9200. [www.fs.fed.us/r2/blackhills/](http://www.fs.fed.us/r2/blackhills/)