

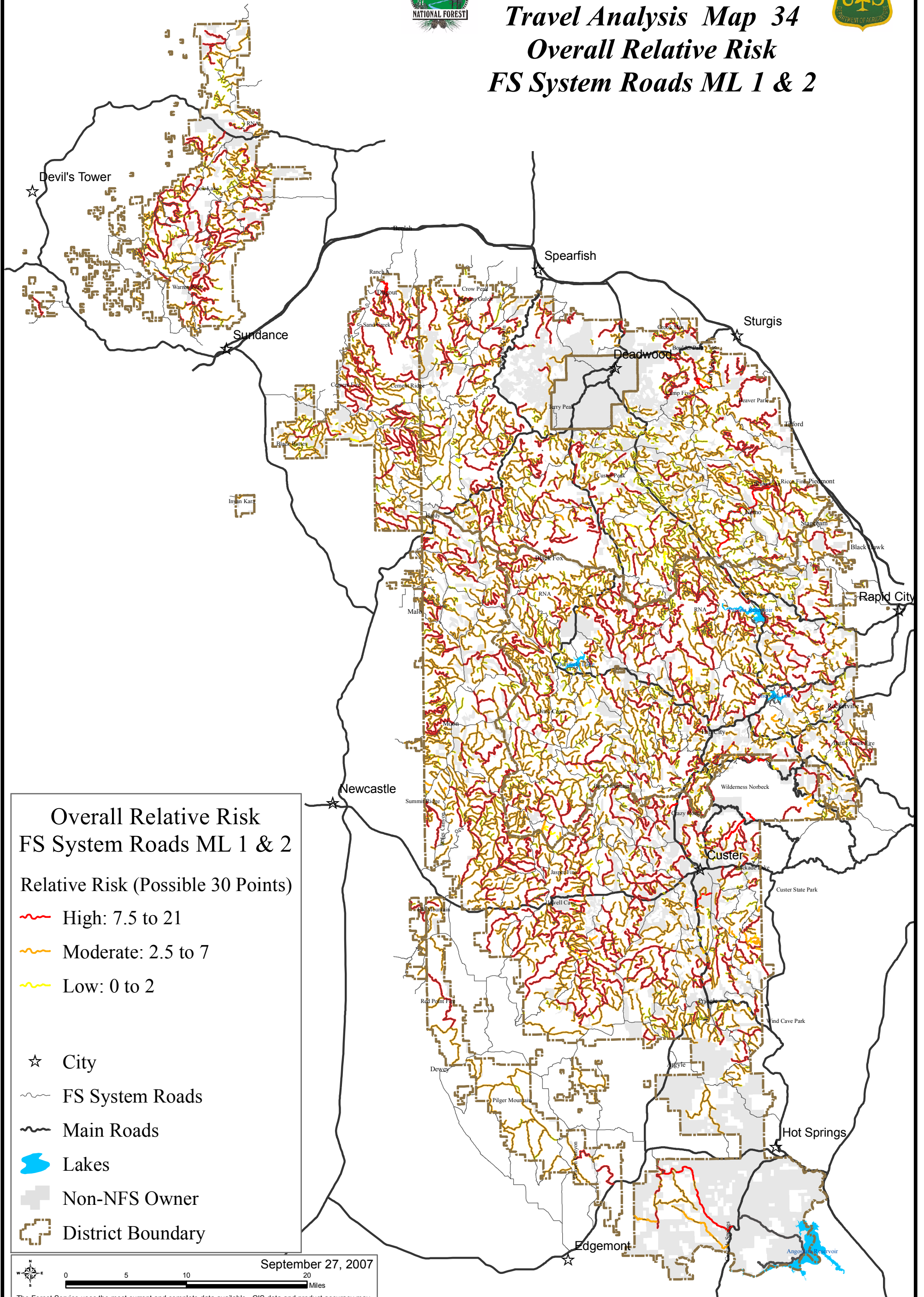


Black Hills National Forest

Travel Analysis Map 34

Overall Relative Risk

FS System Roads ML 1 & 2



Overall Relative Risk
FS System Roads ML 1 & 2

Relative Risk (Possible 30 Points)

- High: 7.5 to 21
- Moderate: 2.5 to 7
- Low: 0 to 2

- City
- FS System Roads
- Main Roads
- Lakes
- Non-NFS Owner
- District Boundary

September 27, 2007

0 5 10 20 Miles

The Forest Service uses the most current and complete data available. GIS data and product accuracy may vary. They may be developed from sources of differing accuracy, accurate only at certain scales, based on modeling or interpretation, incomplete while being created or revised, etc. Using GIS products for purposes other than those for which they were created, may yield inaccurate or misleading results. The Forest Service reserves the right to correct, update, modify, or replace, GIS products without notification. For more information, contact the Black Hills National Forest at (605) 673-9200. www.fs.fed.us/r2/blackhills/

J:\files\office\travel_management\TAP_Report\Maps\34overallrisk_roads_11x17color.mxd 34overallrisk_roads_11x17color.pdf