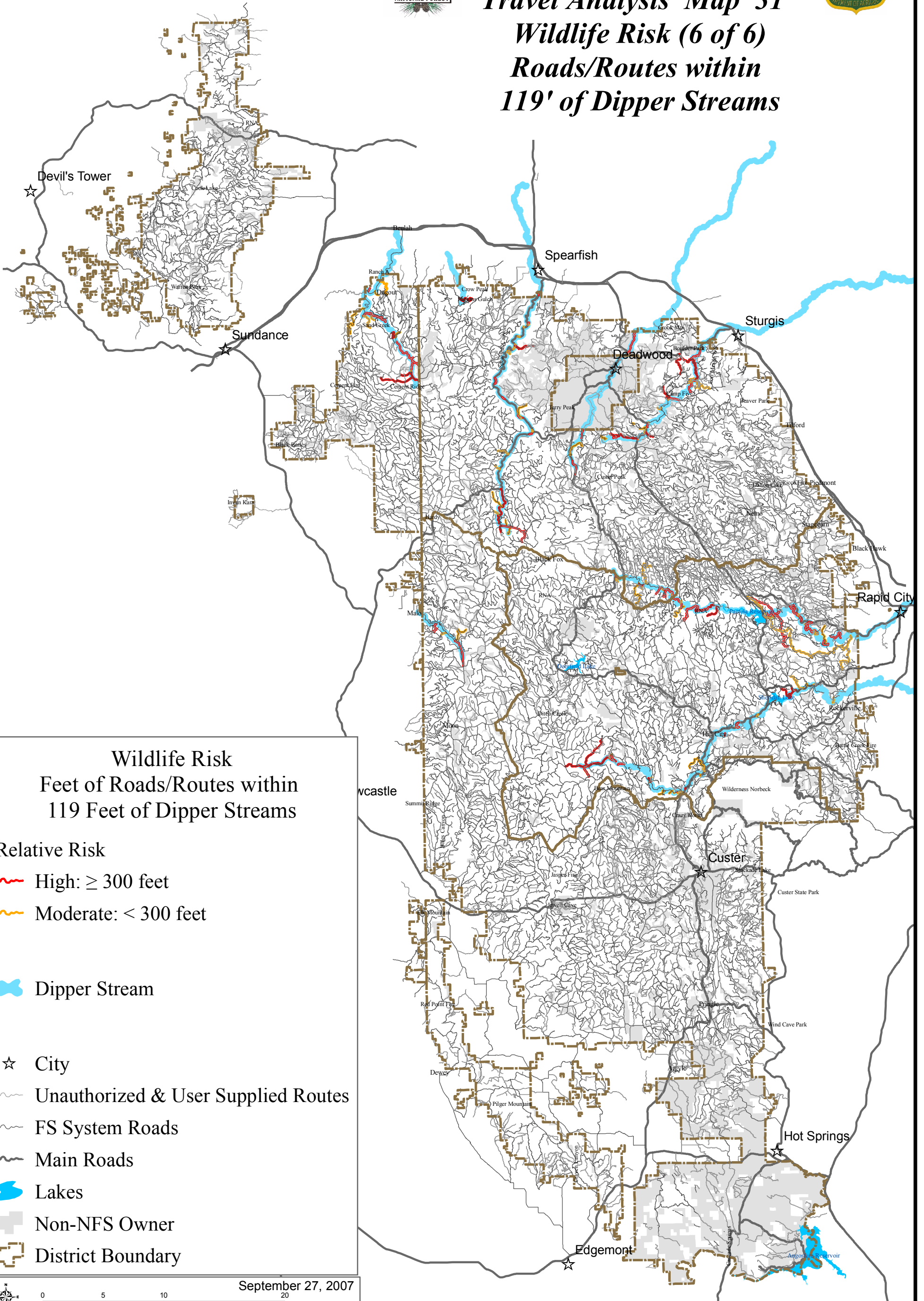




Black Hills National Forest Travel Analysis Map 31 Wildlife Risk (6 of 6) Roads/Routes within 119' of Dipper Streams



Wildlife Risk
Feet of Roads/Routes within
119 Feet of Dipper Streams

Relative Risk

- High: ≥ 300 feet
- Moderate: < 300 feet

Dipper Stream

City

Unauthorized & User Supplied Routes

FS System Roads

Main Roads

Lakes

Non-NFS Owner

District Boundary

September 27, 2007



The Forest Service uses the most current and complete data available. GIS data and product accuracy may vary. They may be developed from sources of differing accuracy, accurate only at certain scales, based on modeling or interpretation, incomplete while being created or revised, etc. Using GIS products for purposes other than those for which they were created, may yield inaccurate or misleading results. The Forest Service reserves the right to correct, update, modify, or replace, GIS products without notification. For more information, contact the Black Hills National Forest at (605) 673-9200. www.fs.fed.us/r2/blackhills/