



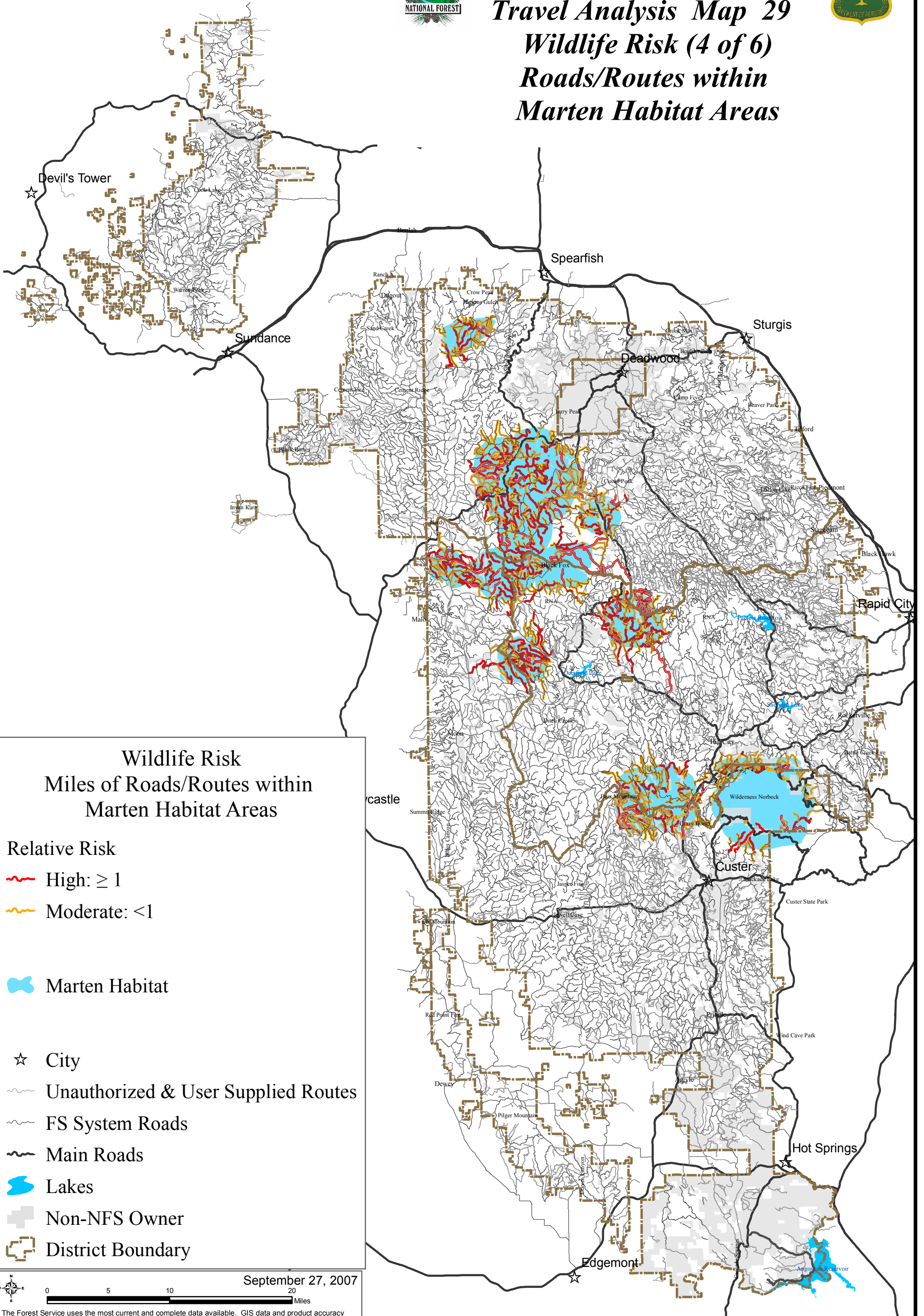
# Black Hills National Forest

## Travel Analysis Map 29

### Wildlife Risk (4 of 6)

### Roads/Routes within

### Marten Habitat Areas



**Wildlife Risk**  
Miles of Roads/Routes within Marten Habitat Areas

**Relative Risk**

- High:  $\geq 1$
- Moderate:  $< 1$

Marten Habitat

City

Unauthorized & User Supplied Routes

FS System Roads

Main Roads

Lakes

Non-NFS Owner

District Boundary

September 27, 2007

0 5 10 20 Miles

The Forest Service uses the most current and complete data available. GIS data and product accuracy may vary. They may be developed from sources of differing accuracy, accurate only at certain scales, based on modeling or interpretation, incomplete while being created or revised, etc. Using GIS products for purposes other than those for which they were created, may yield inaccurate or misleading results. The Forest Service reserves the right to correct, update, modify, or replace, GIS products without notification. For more information, contact the Black Hills National Forest at (605) 673-9200. [www.fs.fed.us/r2/blackhills/](http://www.fs.fed.us/r2/blackhills/)

J:\files\office\rec\travel\_management\TAP\_Report\Maps\29riskmarten\_restricted\_11x17color.mxd 29riskmarten\_restricted\_11x17color.pdf