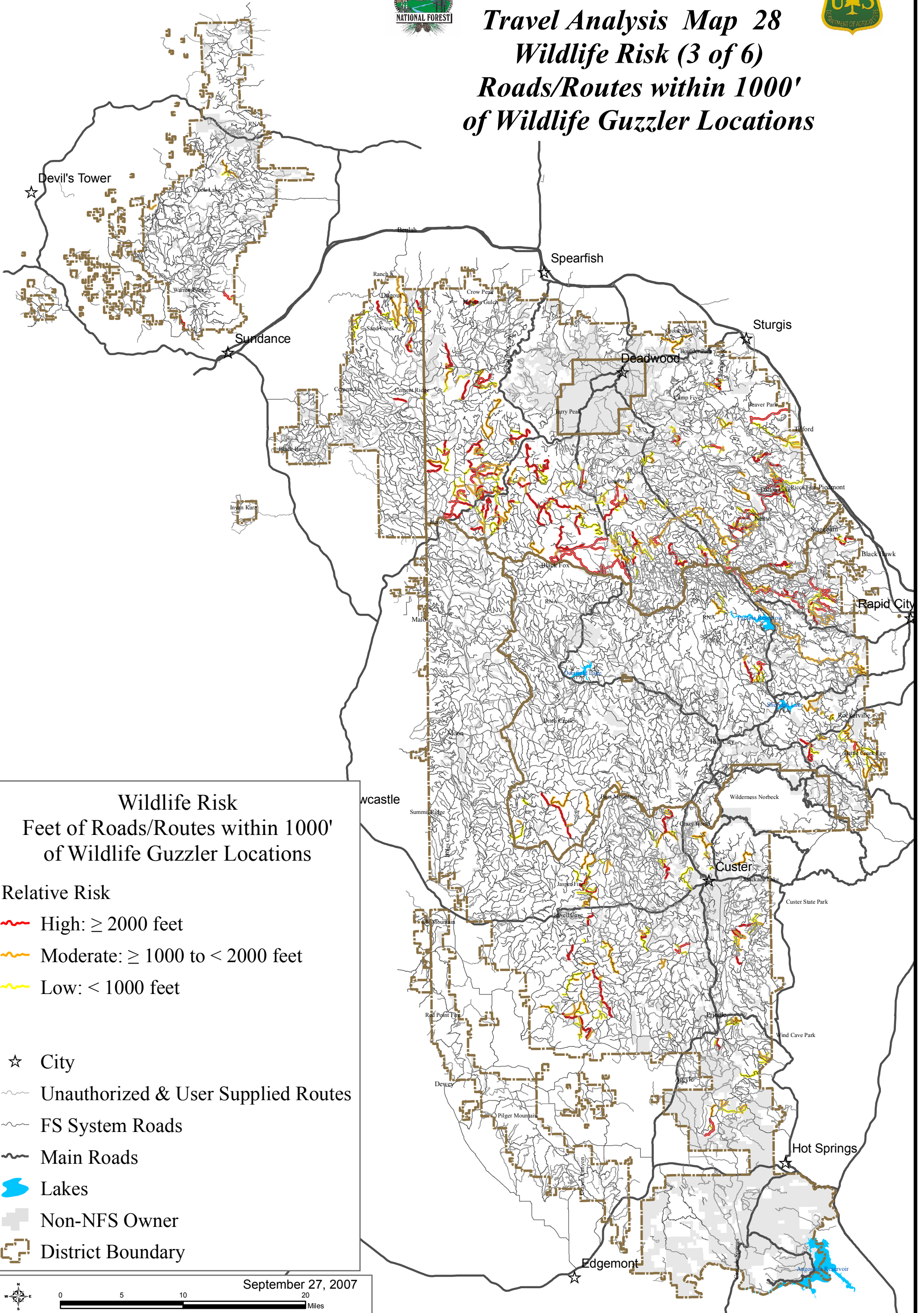




Black Hills National Forest Travel Analysis Map 28 Wildlife Risk (3 of 6) Roads/Routes within 1000' of Wildlife Guzzler Locations



Wildlife Risk
Feet of Roads/Routes within 1000'
of Wildlife Guzzler Locations

Relative Risk

- High: ≥ 2000 feet
- Moderate: ≥ 1000 to < 2000 feet
- Low: < 1000 feet

- City
- Unauthorized & User Supplied Routes
- FS System Roads
- Main Roads
- Lakes
- Non-NFS Owner
- District Boundary

September 27, 2007

0 5 10 20 Miles

The Forest Service uses the most current and complete data available. GIS data and product accuracy may vary. They may be developed from sources of differing accuracy, accurate only at certain scales, based on modeling or interpretation, incomplete while being created or revised, etc. Using GIS products for purposes other than those for which they were created, may yield inaccurate or misleading results. The Forest Service reserves the right to correct, update, modify, or replace, GIS products without notification. For more information, contact the Black Hills National Forest at (605) 673-9200. www.fs.fed.us/r2/blackhills/

J:\files\office\travel_management\TAP_Report\Maps\28riskguzzler_11x17color.mxd 28riskguzzler_11x17color.pdf