

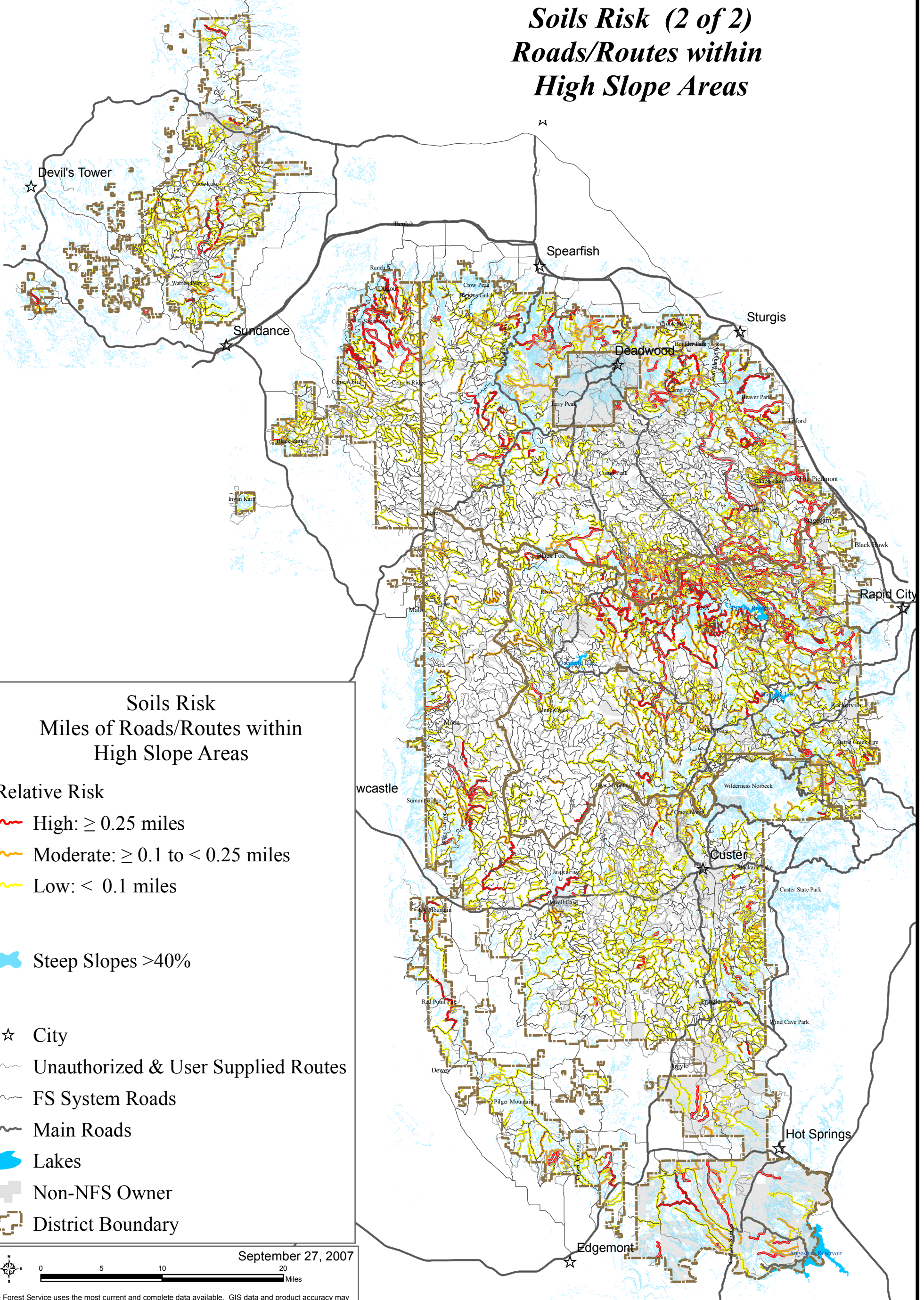


Black Hills National Forest

Travel Analysis Map 20

Soils Risk (2 of 2)

Roads/Routes within High Slope Areas



Soils Risk
Miles of Roads/Routes within High Slope Areas

Relative Risk

- High: ≥ 0.25 miles
- Moderate: ≥ 0.1 to < 0.25 miles
- Low: < 0.1 miles

Steep Slopes $>40\%$

- City
- Unauthorized & User Supplied Routes
- FS System Roads
- Main Roads
- Lakes
- Non-NFS Owner
- District Boundary

September 27, 2007

The Forest Service uses the most current and complete data available. GIS data and product accuracy may vary. They may be developed from sources of differing accuracy, accurate only at certain scales, based on modeling or interpretation, incomplete while being created or revised, etc. Using GIS products for purposes other than those for which they were created, may yield inaccurate or misleading results. The Forest Service reserves the right to correct, update, modify, or replace, GIS products without notification. For more information, contact the Black Hills National Forest at (605) 673-9200. www.fs.fed.us/r2/blackhills/

J:\files\office\rectravel_management\TAP_Report\Maps\20Soils_slope_11x17color.mxd 20Soils_slope_11x17color.pdf