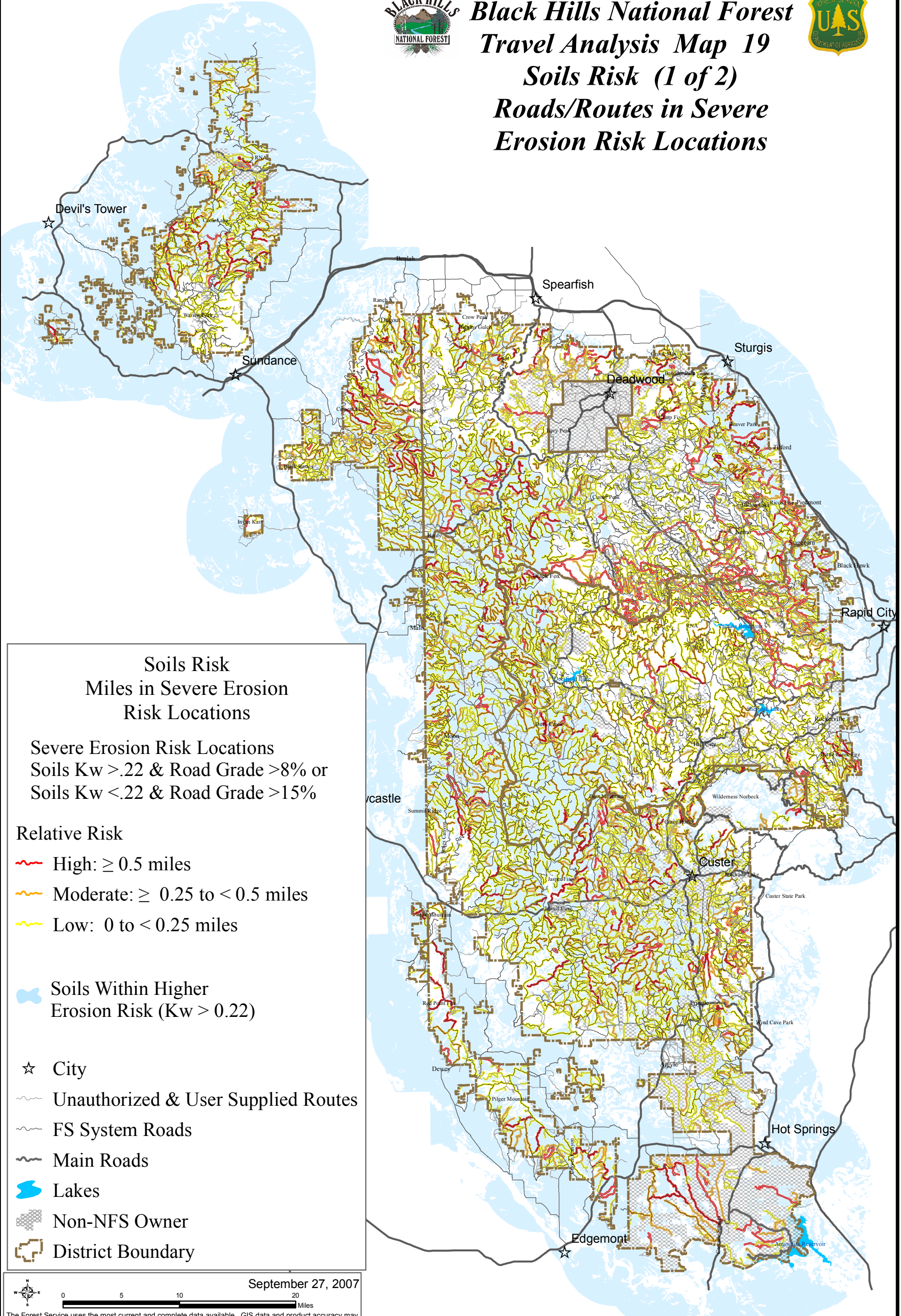




Black Hills National Forest Travel Analysis Map 19 Soils Risk (1 of 2) Roads/Routes in Severe Erosion Risk Locations



Soils Risk Miles in Severe Erosion Risk Locations

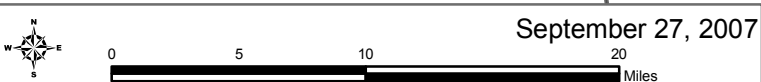
Severe Erosion Risk Locations
Soils Kw >.22 & Road Grade >8% or
Soils Kw <.22 & Road Grade >15%

Relative Risk

- High: ≥ 0.5 miles
- Moderate: ≥ 0.25 to < 0.5 miles
- Low: 0 to < 0.25 miles

Soils Within Higher
Erosion Risk (Kw > 0.22)

- City
- Unauthorized & User Supplied Routes
- FS System Roads
- Main Roads
- Lakes
- Non-NFS Owner
- District Boundary



The Forest Service uses the most current and complete data available. GIS data and product accuracy may vary. They may be developed from sources of differing accuracy, accurate only at certain scales, based on modeling or interpretation, incomplete while being created or revised, etc. Using GIS products for purposes other than those for which they were created, may yield inaccurate or misleading results. The Forest Service reserves the right to correct, update, modify, or replace, GIS products without notification. For more information, contact the Black Hills National Forest at (605) 673-9200.