

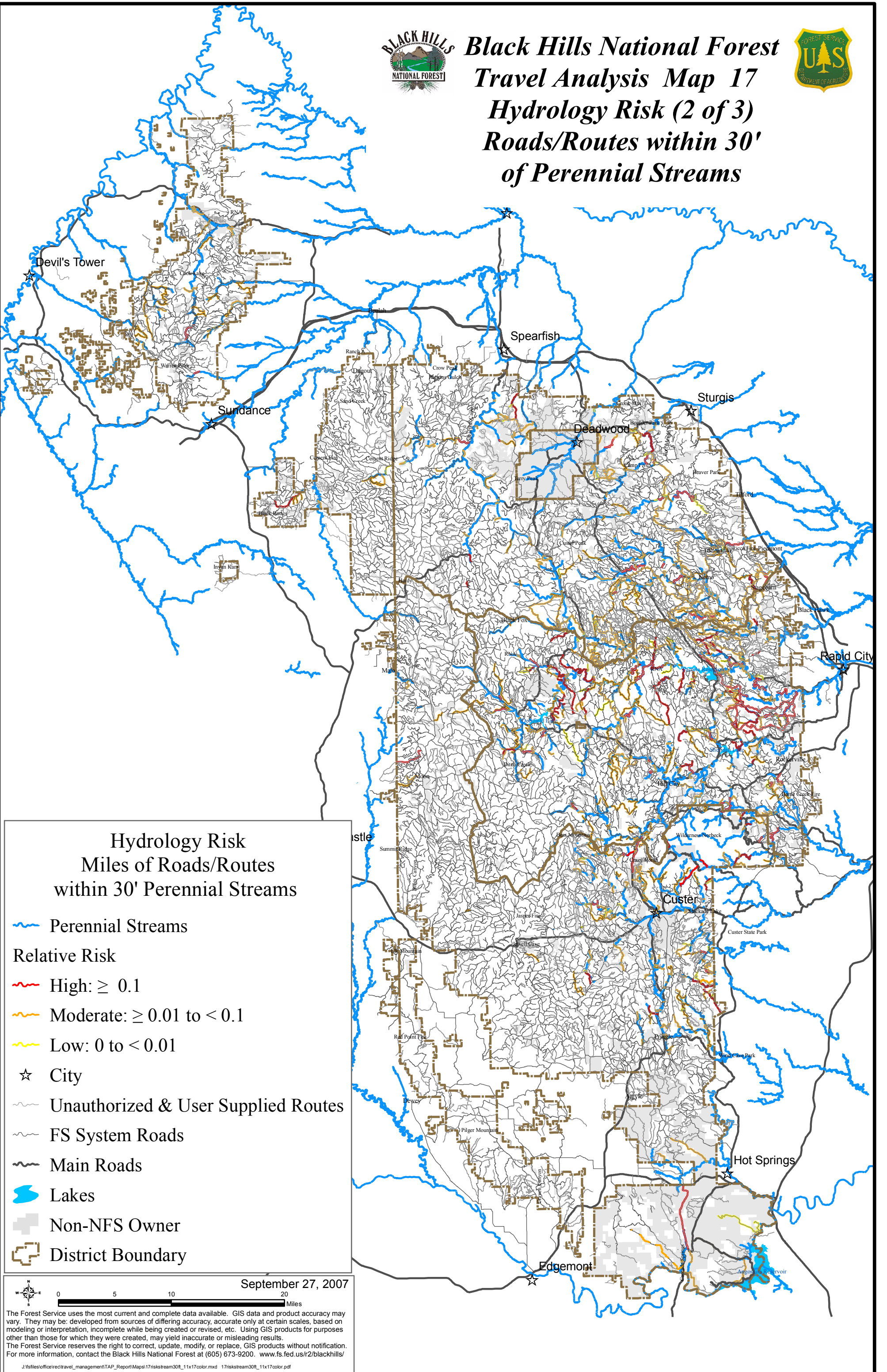


# Black Hills National Forest

## Travel Analysis Map 17

### Hydrology Risk (2 of 3)

### Roads/Routes within 30' of Perennial Streams



**Hydrology Risk**  
Miles of Roads/Routes  
within 30' Perennial Streams

- Perennial Streams
- Relative Risk**
- High:  $\geq 0.1$
- Moderate:  $\geq 0.01$  to  $< 0.1$
- Low: 0 to  $< 0.01$
- City
- Unauthorized & User Supplied Routes
- FS System Roads
- Main Roads
- Lakes
- Non-NFS Owner
- District Boundary

September 27, 2007

0 5 10 20 Miles

The Forest Service uses the most current and complete data available. GIS data and product accuracy may vary. They may be: developed from sources of differing accuracy, accurate only at certain scales, based on modeling or interpretation, incomplete while being created or revised, etc. Using GIS products for purposes other than those for which they were created, may yield inaccurate or misleading results. The Forest Service reserves the right to correct, update, modify, or replace, GIS products without notification. For more information, contact the Black Hills National Forest at (605) 673-9200. [www.fs.fed.us/r2/blackhills/](http://www.fs.fed.us/r2/blackhills/)

J:\files\office\travel\_management\TAP\_Report\Maps\17riskstream30ft\_11x17color.mxd 17riskstream30ft\_11x17color.pdf