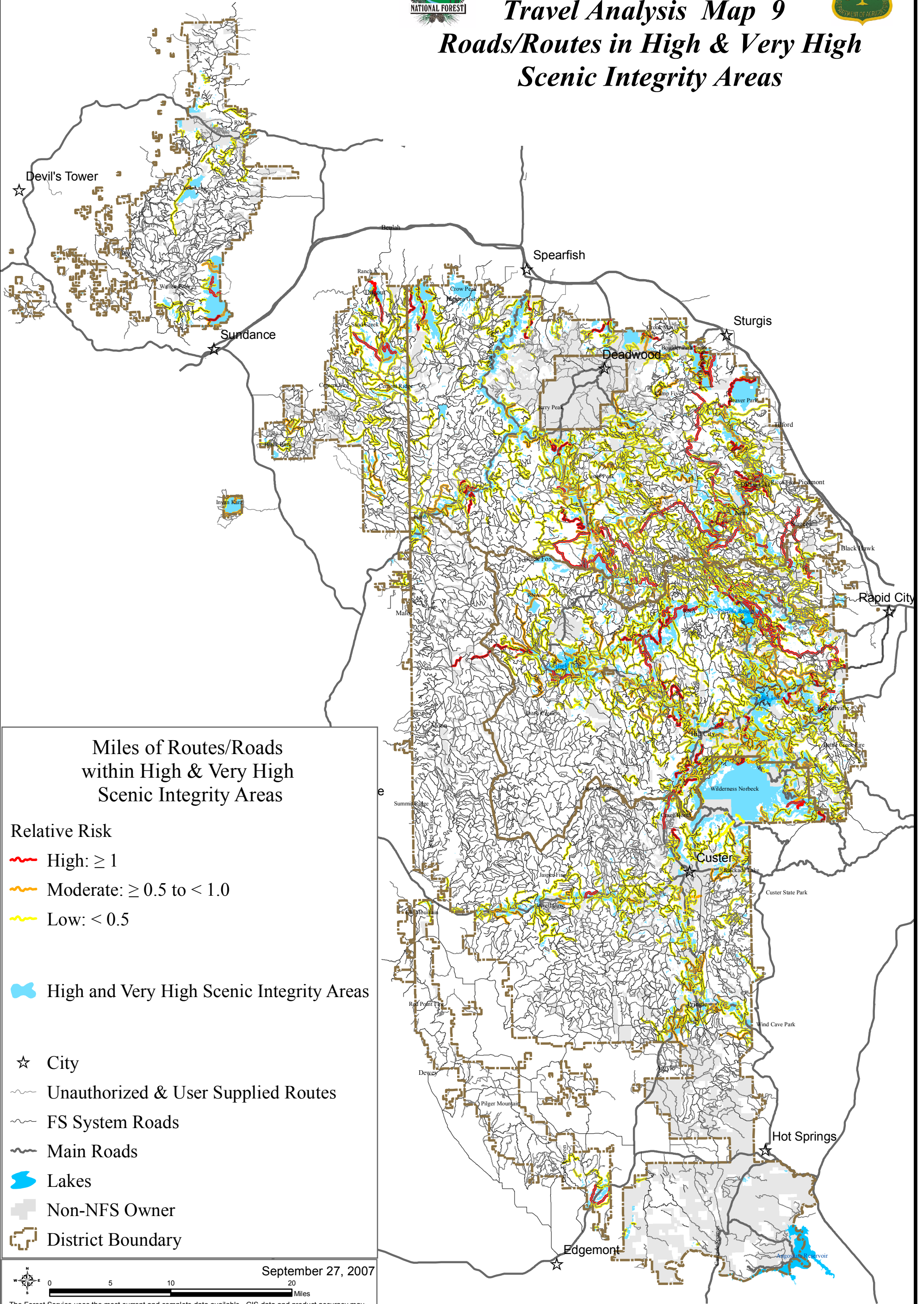




# Black Hills National Forest

## Travel Analysis Map 9

### Roads/Routes in High & Very High Scenic Integrity Areas



#### Miles of Routes/Roads within High & Very High Scenic Integrity Areas

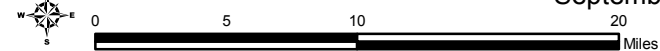
##### Relative Risk

- High:  $\geq 1$
- Moderate:  $\geq 0.5$  to  $< 1.0$
- Low:  $< 0.5$

High and Very High Scenic Integrity Areas

- City
- Unauthorized & User Supplied Routes
- FS System Roads
- Main Roads
- Lakes
- Non-NFS Owner
- District Boundary

September 27, 2007



The Forest Service uses the most current and complete data available. GIS data and product accuracy may vary. They may be: developed from sources of differing accuracy, accurate only at certain scales, based on modeling or interpretation, incomplete while being created or revised, etc. Using GIS products for purposes other than those for which they were created, may yield inaccurate or misleading results. The Forest Service reserves the right to correct, update, modify, or replace GIS products without notification. For more information, contact the Black Hills National Forest at (605) 673-9200. [www.fs.fed.us/r2/blackhills/](http://www.fs.fed.us/r2/blackhills/)