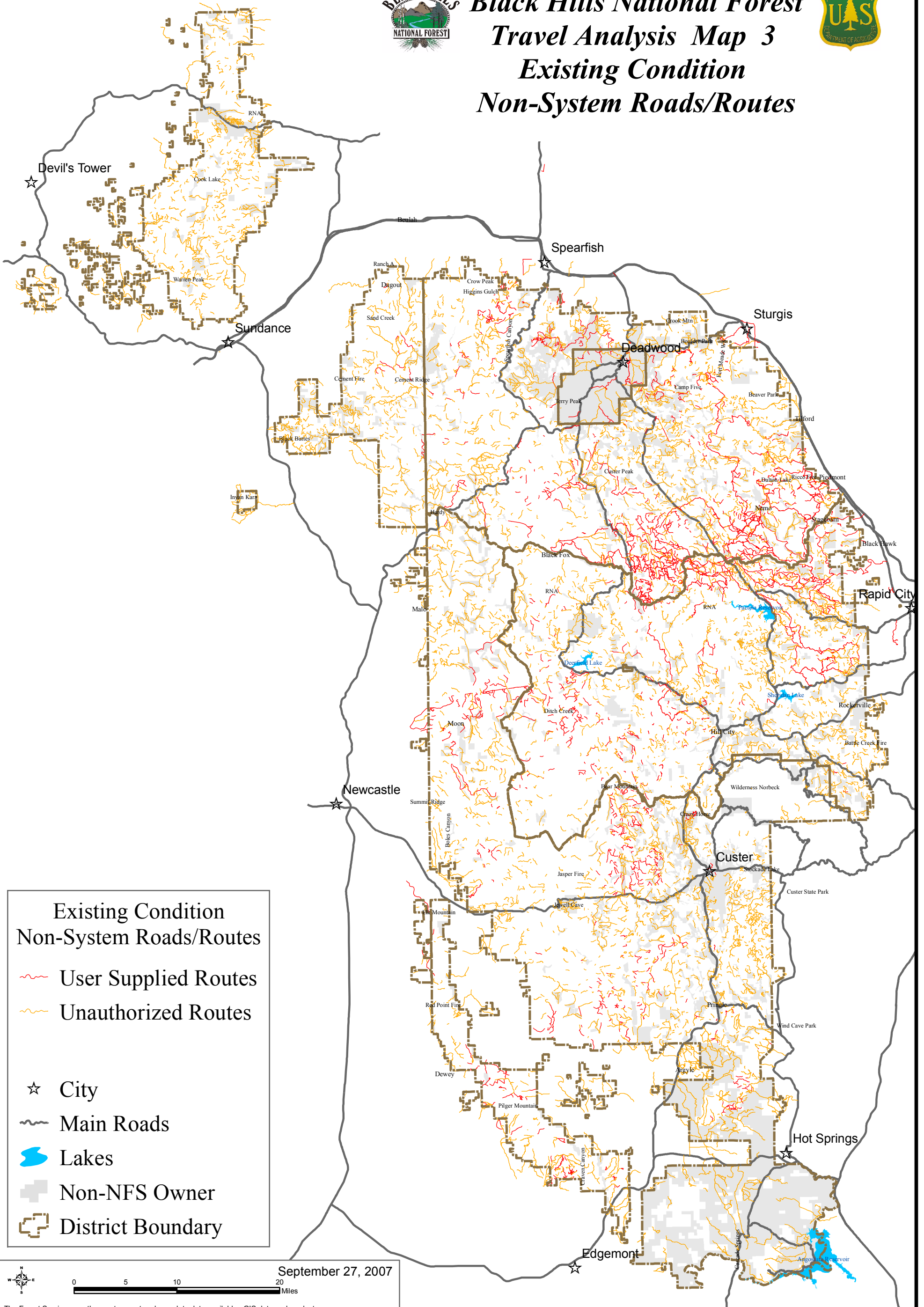




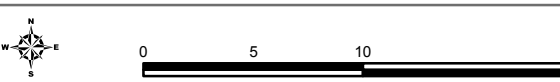
Black Hills National Forest Travel Analysis Map 3 Existing Condition Non-System Roads/Routes



**Existing Condition
Non-System Roads/Routes**

- User Supplied Routes
- Unauthorized Routes
- City
- Main Roads
- Lakes
- Non-NFS Owner
- District Boundary

September 27, 2007



The Forest Service uses the most current and complete data available. GIS data and product accuracy may vary. They may be: developed from sources of differing accuracy, accurate only at certain scales, based on modeling or interpretation, incomplete while being created or revised, etc. Using GIS products for purposes other than those for which they were created, may yield inaccurate or misleading results. The Forest Service reserves the right to correct, update, modify, or replace, GIS products without notification. For more information, contact the Black Hills National Forest at (605) 673-9200. www.fs.fed.us/r2/blackhills/