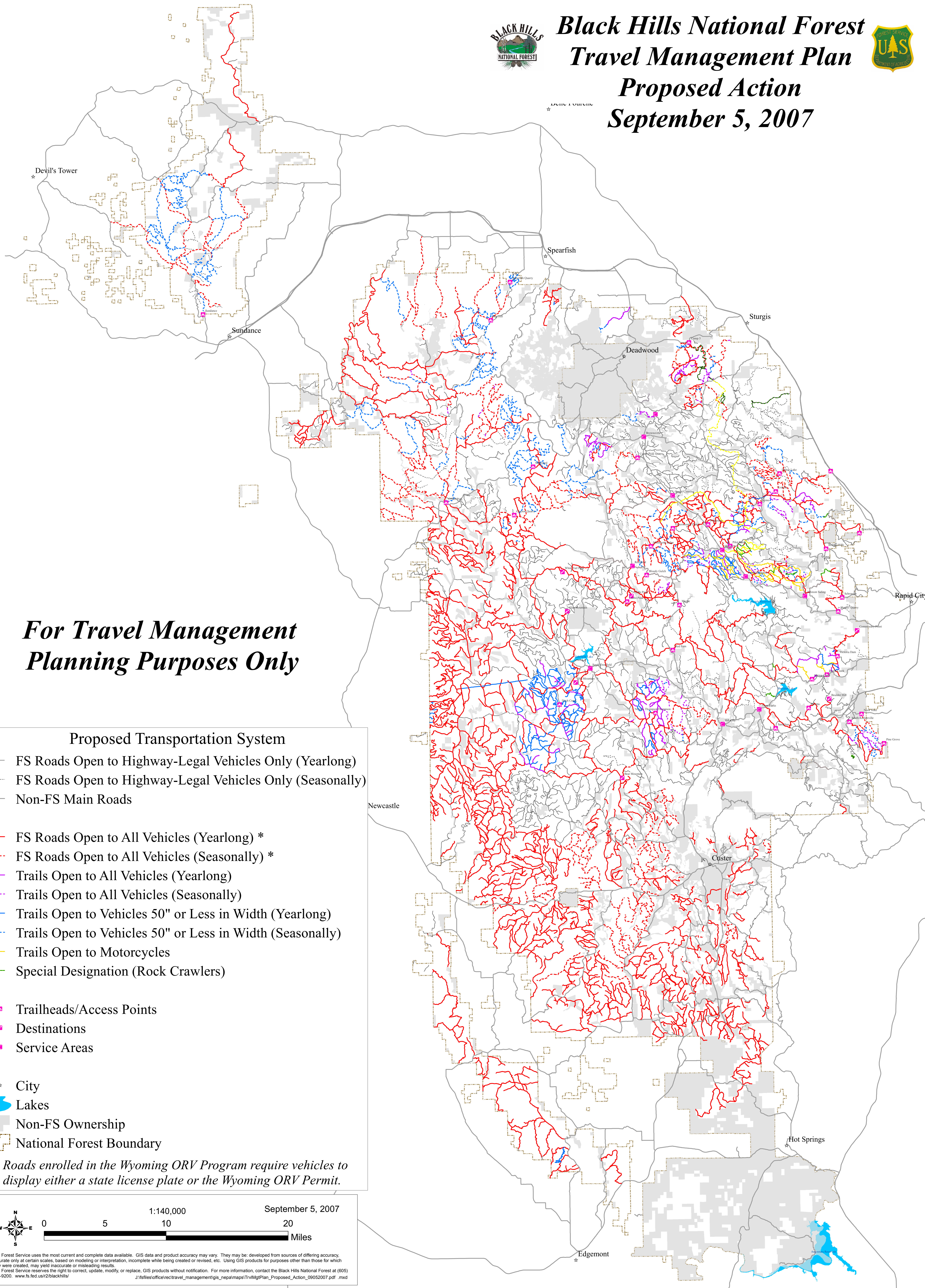




# Black Hills National Forest Travel Management Plan Proposed Action September 5, 2007

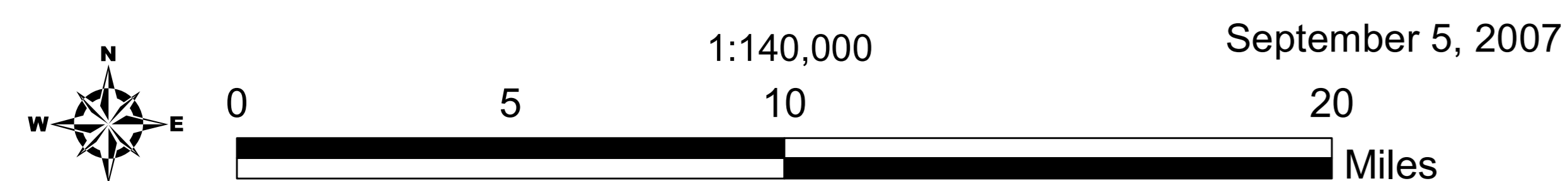


**For Travel Management  
Planning Purposes Only**

### Proposed Transportation System

- FS Roads Open to Highway-Legal Vehicles Only (Yearlong)
- FS Roads Open to Highway-Legal Vehicles Only (Seasonally)
- Non-FS Main Roads
  
- FS Roads Open to All Vehicles (Yearlong) \*
- FS Roads Open to All Vehicles (Seasonally) \*
- Trails Open to All Vehicles (Yearlong)
- Trails Open to All Vehicles (Seasonally)
- Trails Open to Vehicles 50" or Less in Width (Yearlong)
- Trails Open to Vehicles 50" or Less in Width (Seasonally)
- Trails Open to Motorcycles
- Special Designation (Rock Crawlers)
  
- Trailheads/Access Points
- Destinations
- Service Areas
  
- \* City
- Lakes
- Non-FS Ownership
- National Forest Boundary

\* Roads enrolled in the Wyoming ORV Program require vehicles to display either a state license plate or the Wyoming ORV Permit.



The Forest Service uses the most current and complete data available. GIS data and product accuracy may vary. They may be developed from sources of differing accuracy, accurate only at certain scales, based on modeling or interpretation, incomplete while being created or revised, etc. Using GIS products for purposes other than those for which they were created, may yield inaccurate or misleading results. The Forest Service reserves the right to correct, update, modify, or replace, GIS products without notification. For more information, contact the Black Hills National Forest at (605) 673-9200. www.fs.fed.us/r2/blackhills/