

Figure 1. Index map of study area. Shaded area shows generalized extent of central Nevada seismic belt (Machette, 2002).

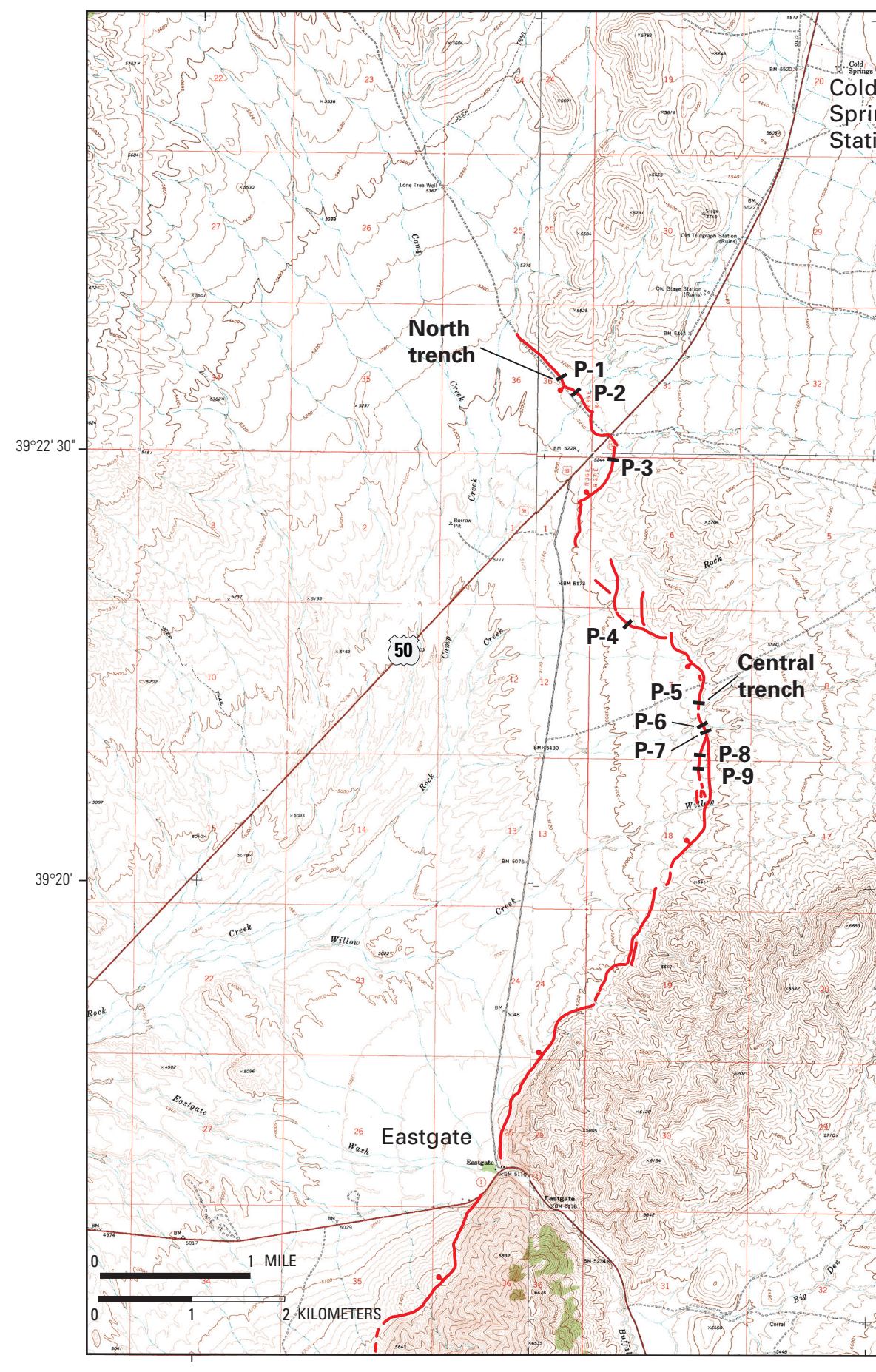


Figure 2. Aerial photograph showing trace of the Eastgate fault (red arrow) and location of scarp profiles. North trench (NEG) is located at site of profile P-1, and central trench (CEG) is located at site of profile P-5.

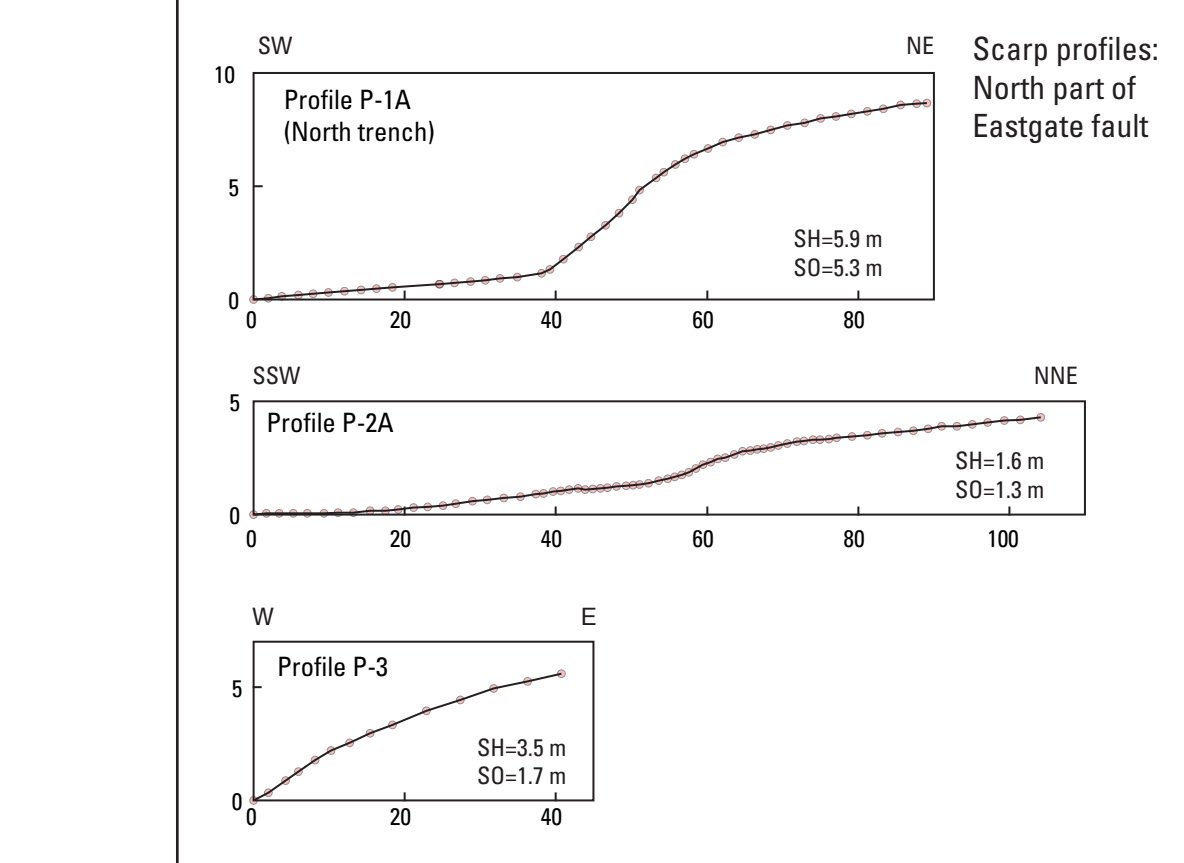


Figure 3. Topographic map of the Eastgate fault (red line) showing location of trenches and scarp-profile sites. Heavy solid red line shows trace of fault; bar and ball on downthrown side.

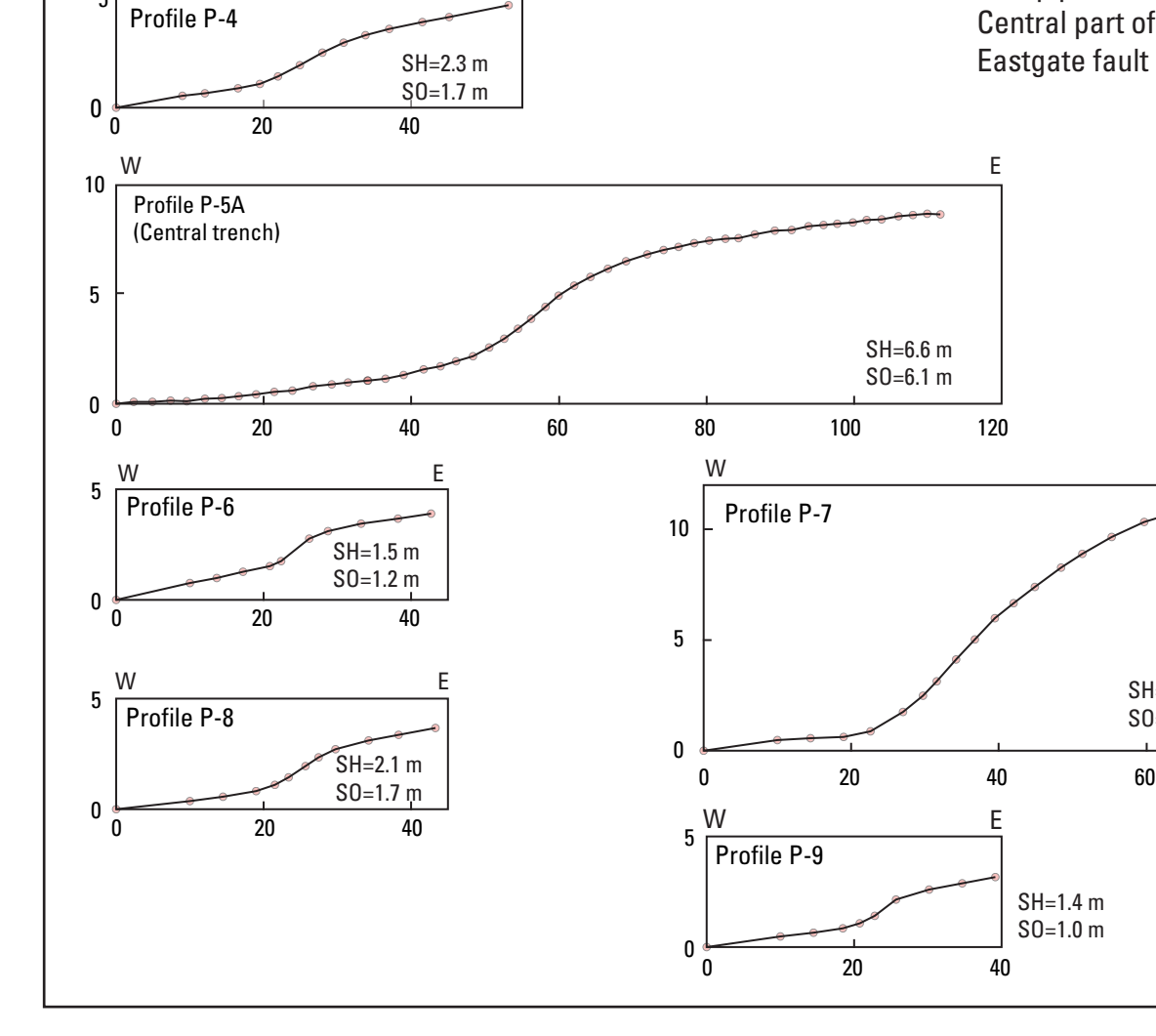


Figure 4. Generalized geologic map of the region adjacent to the Eastgate fault.



Figure 5A. Selected scarp profiles of the northern and central parts of the Eastgate fault. SH is scarp height; SO is surface offset; see Bucknam and Anderson (1979) for definitions. Checks on profile lines show locations of data points. Profiles P-1A, P-2A, and P-5A are located at sites P-1, P-2, and P-5, respectively, as shown in figures 2 and 3. Horizontal and vertical measurements are in meters.

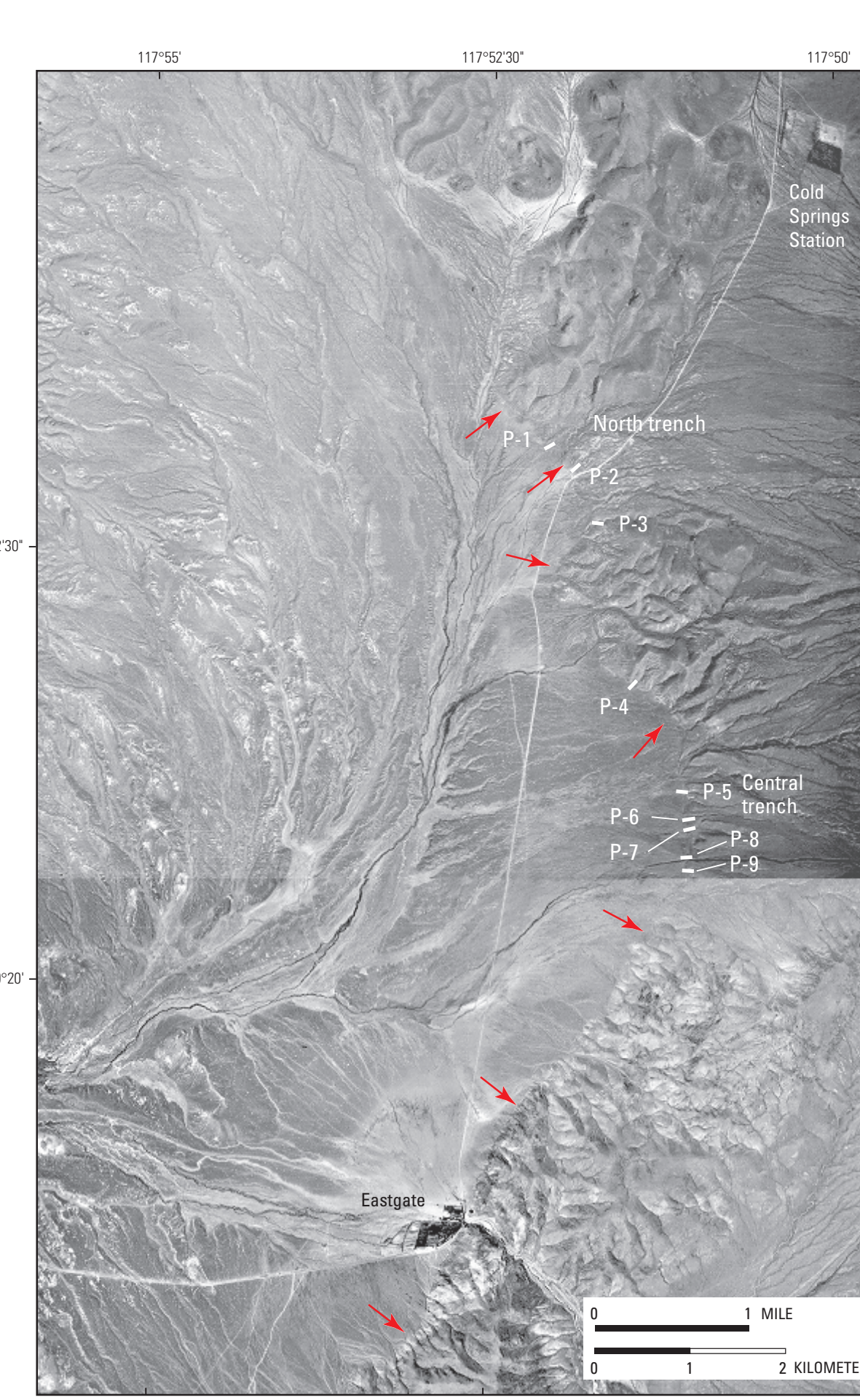


Figure 5B. Comparison of scarp profiles of the Eastgate fault with morphology of scarps of various ages in Utah. Approximate ages of Utah scarps (in thousands of years ka) are summarized by Bucknam and Anderson (1979) and Machette (1989).

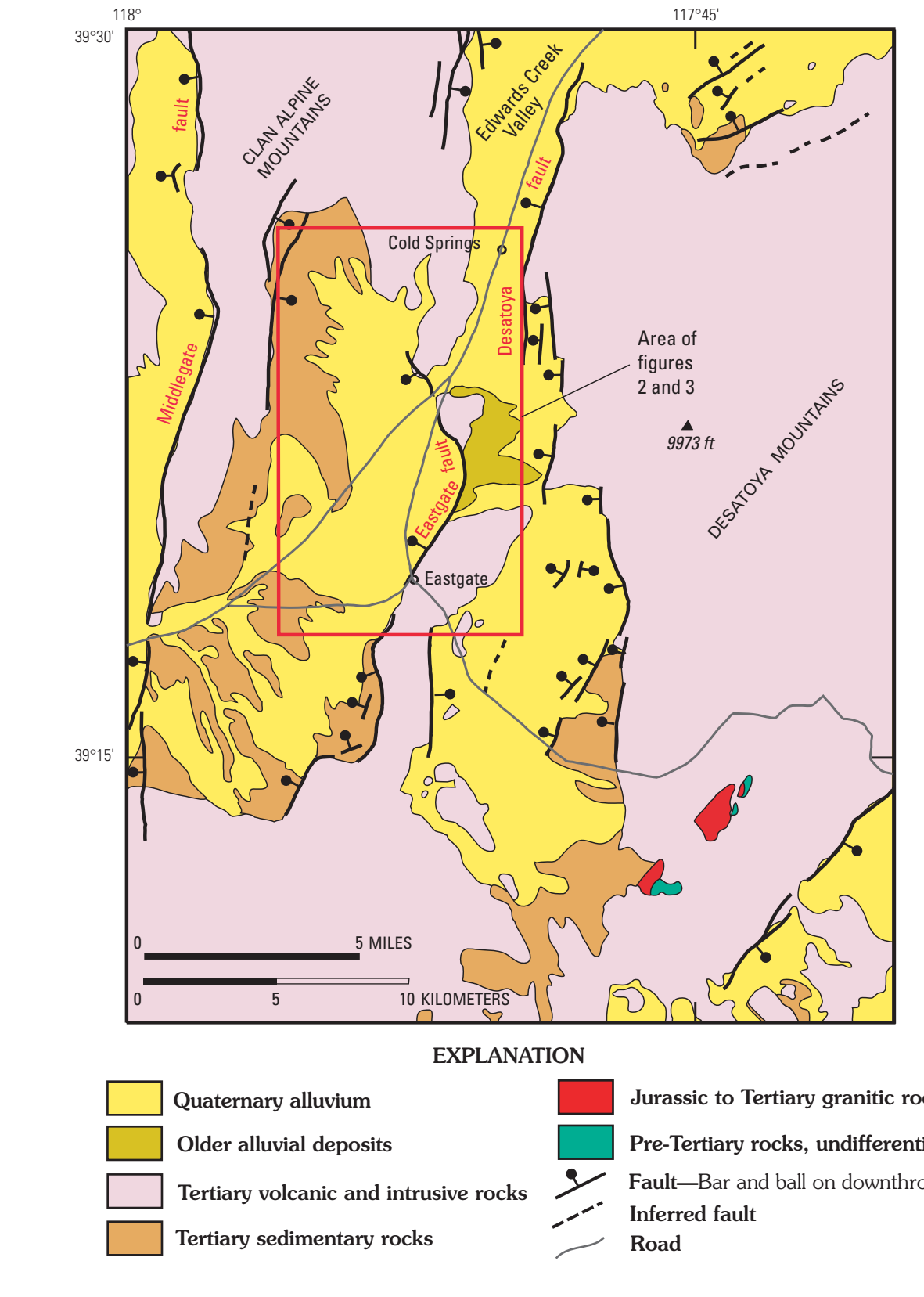


Figure 6. Map of trench across the Eastgate fault at north trench site.

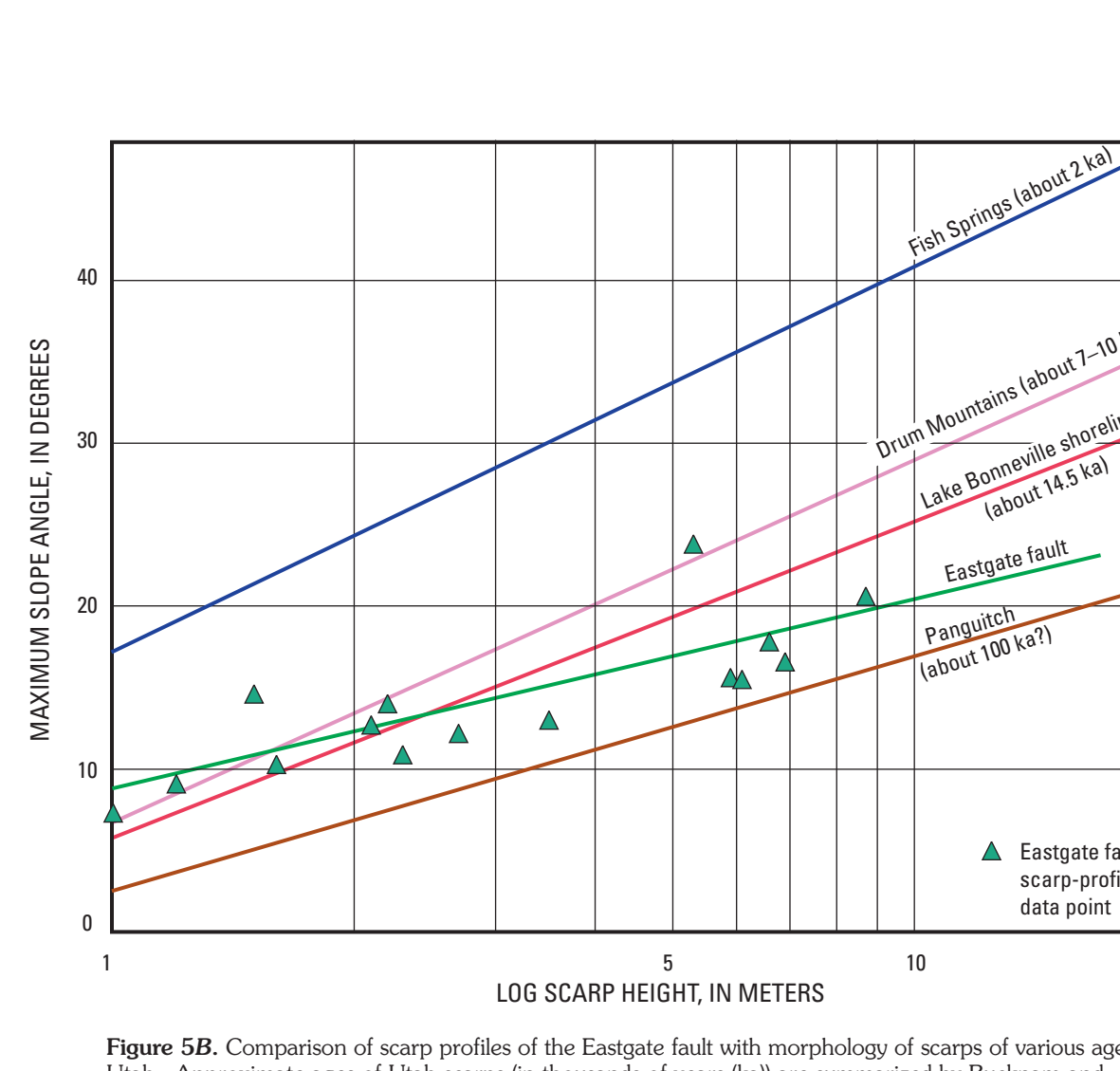


Figure 7. Map of trench across the Eastgate fault at central trench site.

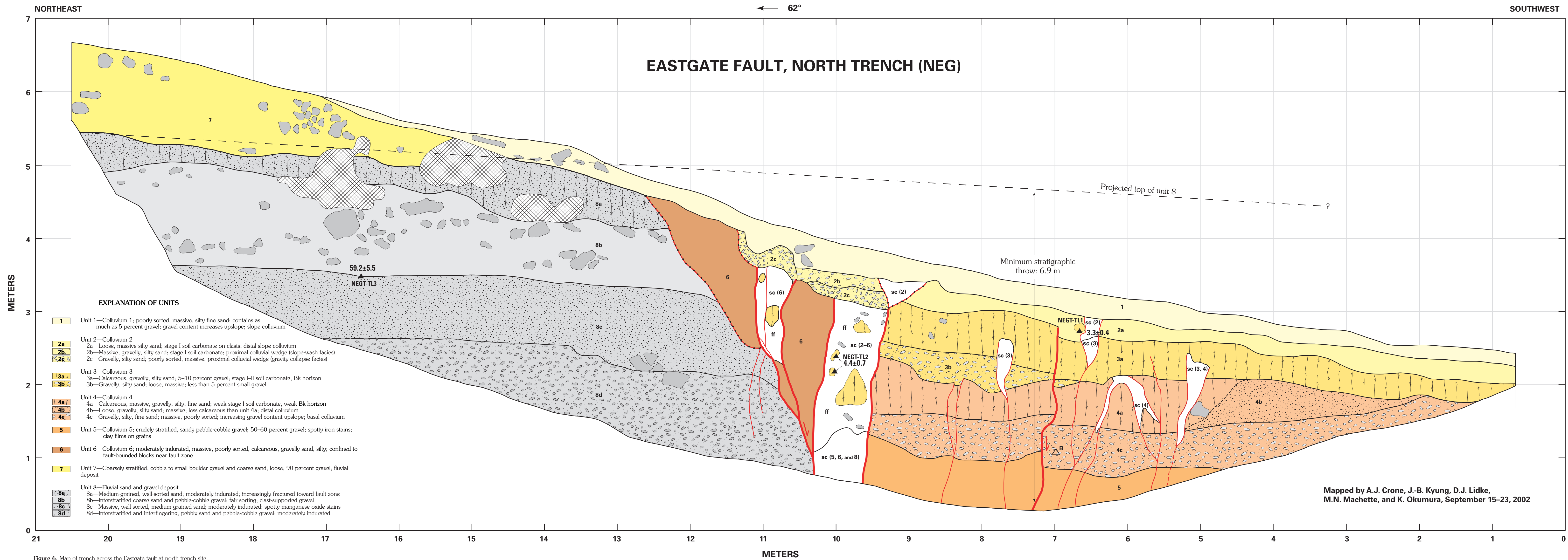


Figure 6. Map of trench across the Eastgate fault at north trench site.

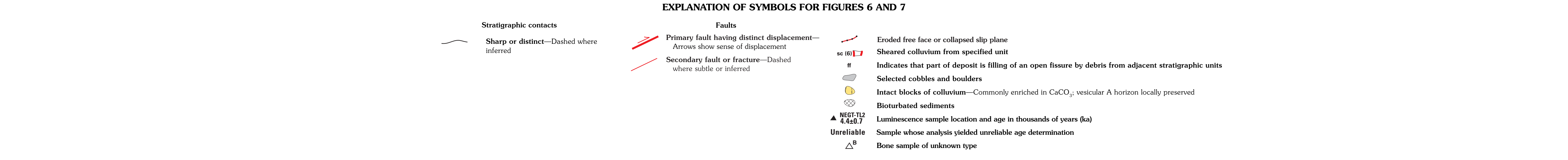


Figure 7. Map of trench across the Eastgate fault at central trench site.

DATA RELATED TO LATE QUATERNARY SURFACE FAULTING ON THE EASTGATE FAULT, CHURCHILL COUNTY, NEVADA

By
Anthony J. Crone,¹ Jai-Bok Kyung,² Michael N. Machette,¹ David J. Lidke,¹ Koji Okumura,³ and Shannon A. Mahan¹

2006

¹U.S. Geological Survey, Denver, CO, 80225
²Korea National University of Education, Changbuk, South Korea
³Hiroshima University, Hiroshima, Japan

Any use of trade names in this descriptive document does not imply endorsement by the U.S. Government.
This map was produced on request, directly from digital files, on an electronic platform.
For sale by the U.S. Geological Survey Information Services, Box 25286, Federal Center,
Denver, CO 80225; 1-800-859-1489.
PDF file is available online at: <http://dx.doi.org/10.7927/H4JH>