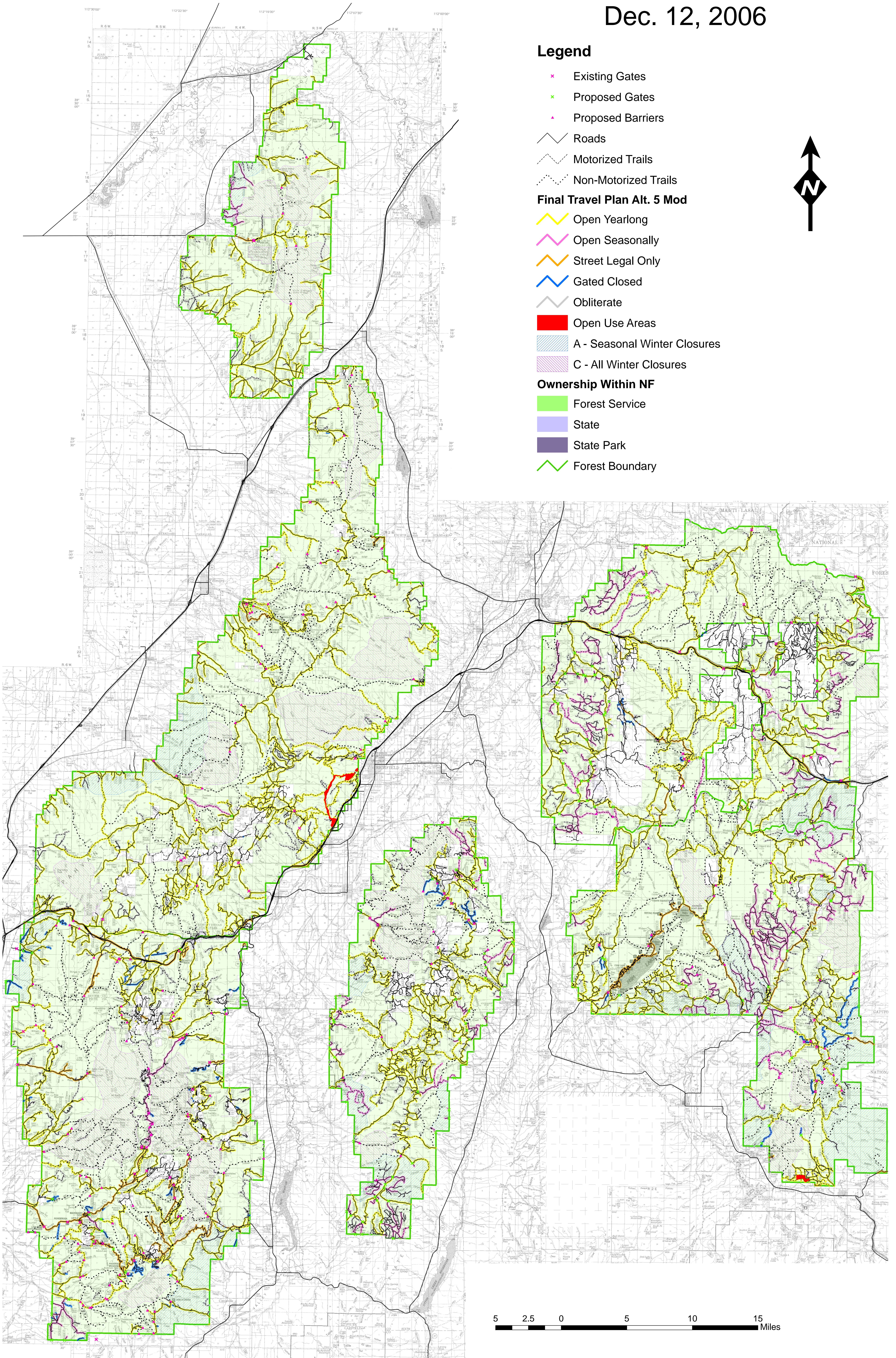
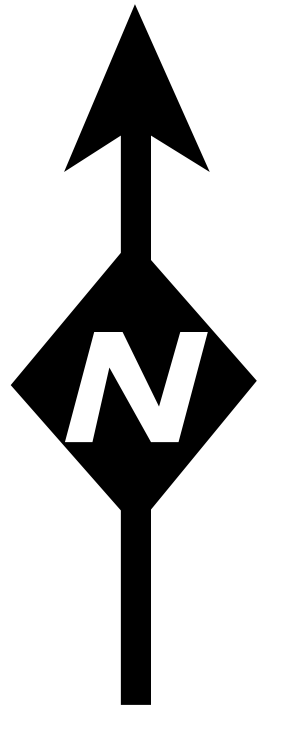


Selected Travel Plan Fishlake National Forest Alternative 5 as Modified Dec. 12, 2006

Legend

- ✖ Existing Gates
- ✖ Proposed Gates
- ✖ Proposed Barriers
- Roads
- Motorized Trails
- Non-Motorized Trails
- Final Travel Plan Alt. 5 Mod**
- Open Yearlong
- Open Seasonally
- Street Legal Only
- Gated Closed
- Obliterate
- Open Use Areas
- A - Seasonal Winter Closures
- C - All Winter Closures
- Ownership Within NF**
- Forest Service
- State
- State Park
- Forest Boundary



5 2.5 0 5 10 15 Miles