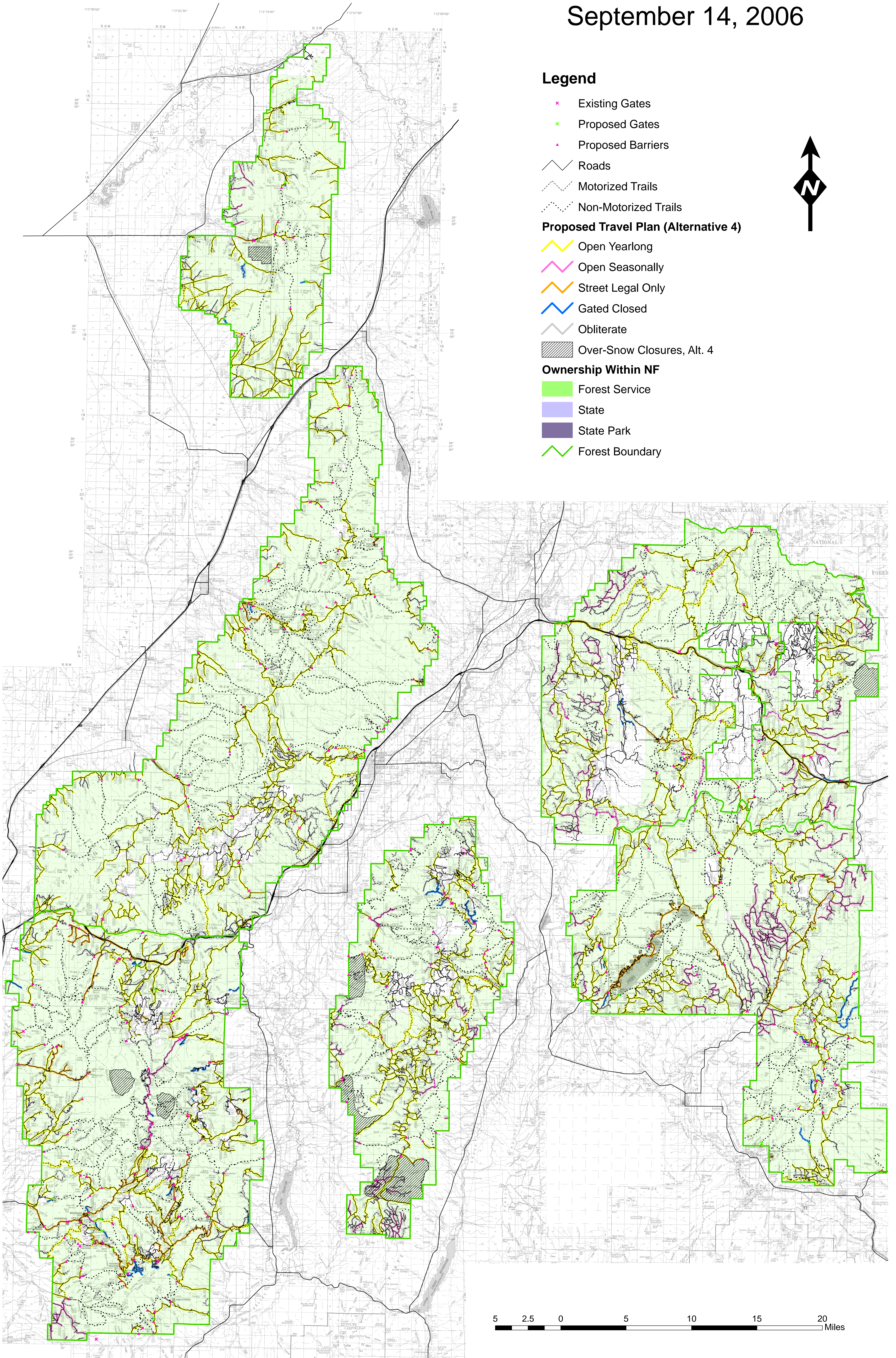


# Proposed Travel Plan Fishlake National Forest Alternative 4 September 14, 2006



## Legend

- ✕ Existing Gates
- ✕ Proposed Gates
- ✕ Proposed Barriers

- Roads
- - - Motorized Trails
- ⋯ Non-Motorized Trails

### Proposed Travel Plan (Alternative 4)

- Open Yearlong
- Open Seasonally
- Street Legal Only
- Gated Closed
- Obliterate
- ▨ Over-Snow Closures, Alt. 4

### Ownership Within NF

- Forest Service
- State
- State Park
- Forest Boundary

