

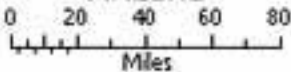
GENERAL LOCATION
HOLBROOK UNIFIED SCHOOL DISTRICT #3
EDUCATION LAND GRANT ACT LAND CONVEYANCE
APACHE-SITGREAVES NATIONAL FORESTS
HOLBROOK, NAVAJO COUNTY, ARIZONA

Navajo County Assessor Parcel : 109-02-221



APACHE-SITGREAVES
NATIONAL FORESTS

Arizona



HOLBROOK UNIFIED SCHOOL DISTRICT #3
 EDUCATION LAND GRANT ACT LAND CONVEYANCE
 APACHE-SITGREAVES NATIONAL FORESTS
 HOLBROOK, NAVAJO COUNTY, ARIZONA

Navajo County Assessor Parcel : 109-02-221

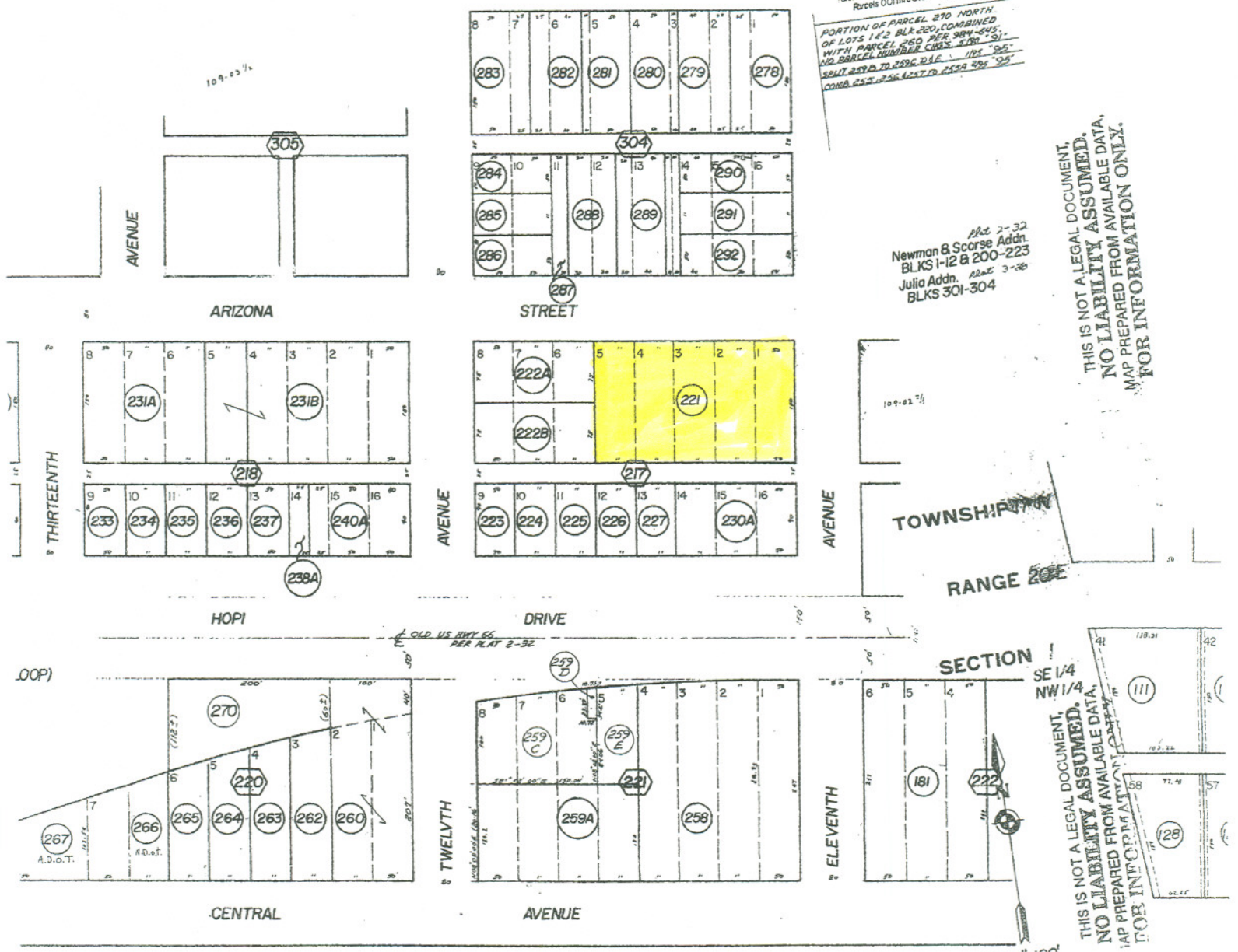
109-02
 CODE 0350 4 of 4

Parcels 278 thru 292 from 109-02
 Parcels 001 thru 015 6383

PORTION OF PARCEL 270 NORTH
 OF LOTS 1 & 2 BLK 220, COMBINED
 WITH PARCEL 250 PER 304-045,
 NO PARCEL NUMBER CHG. 3-20 '91'
 SPLIT 279 TO 278 & 279 1/2 '95'
 COMB. 255, 256 & 270 3/24 '95'

Blk 3-32
 Newman & Score Addn.
 BLKS 1-12 & 200-223
 Julia Addn. Blk 3-20
 BLKS 301-304

THIS IS NOT A LEGAL DOCUMENT,
 NO LIABILITY ASSUMED.
 MAP PREPARED FROM AVAILABLE DATA.
 FOR INFORMATION ONLY.



TOWNSHIP 17N
 RANGE 20E

SECTION 11

SE 1/4
 NW 1/4
 THIS IS NOT A LEGAL DOCUMENT,
 NO LIABILITY ASSUMED.
 MAP PREPARED FROM AVAILABLE DATA.
 FOR INFORMATION ONLY.

SCALE 1"=100'
 LRP 63-83

NAVAJO COUNTY ASSESSOR

109-09
 1 of 4
 Code 0350