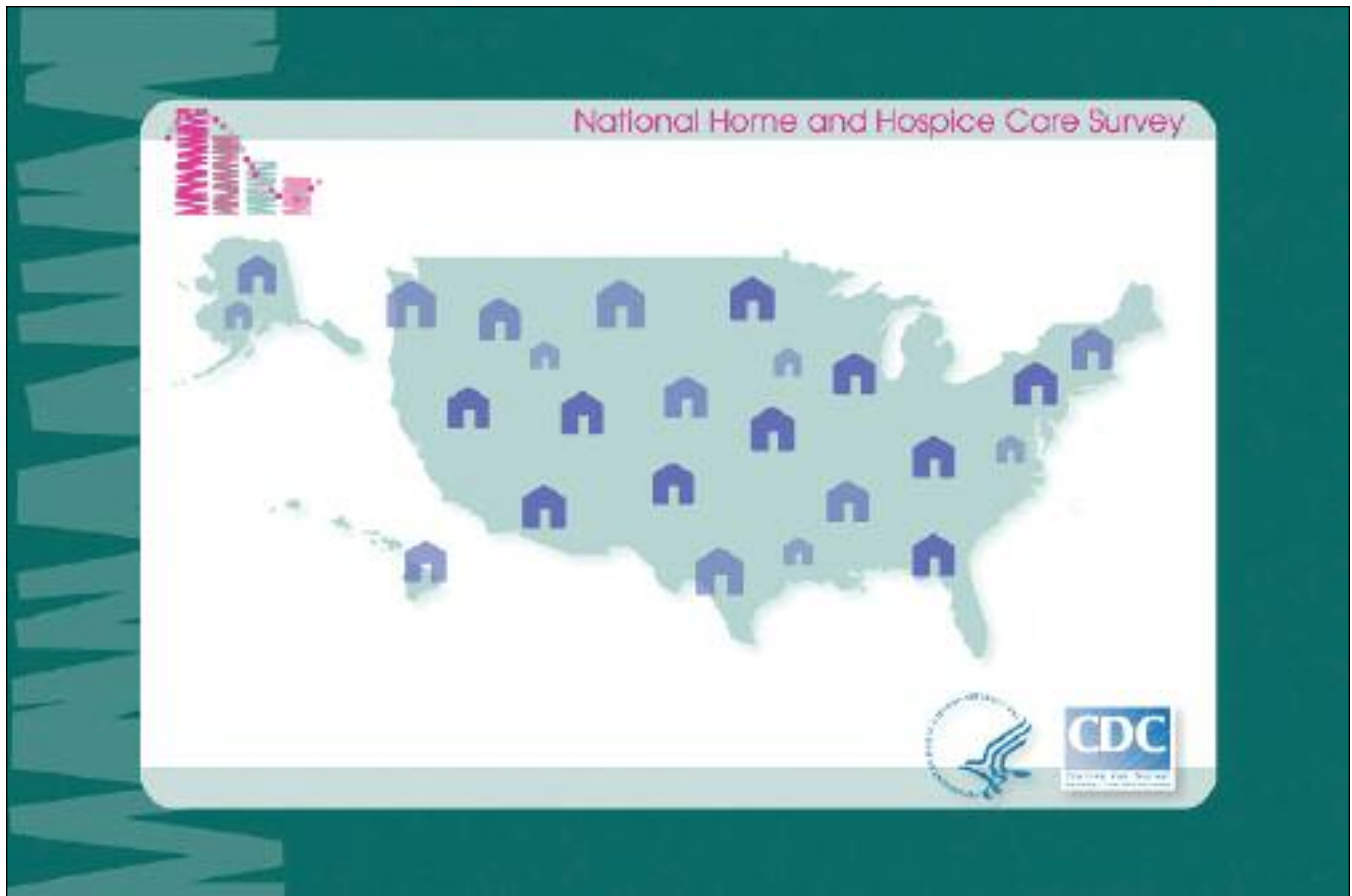


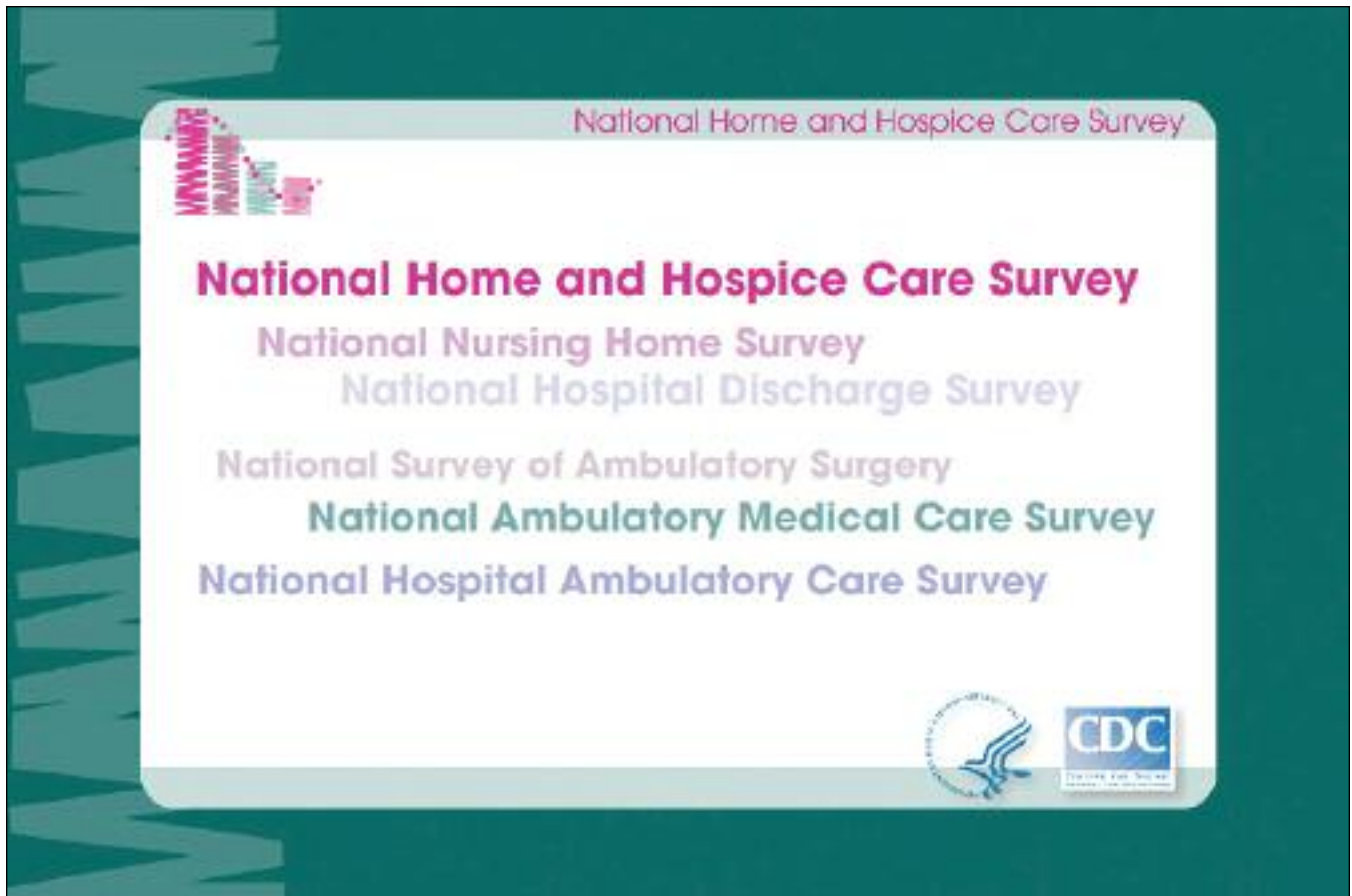
Music plays. National Home and Hospice Care Survey logo appears with Department of Health and Human Services and CDC logos below.



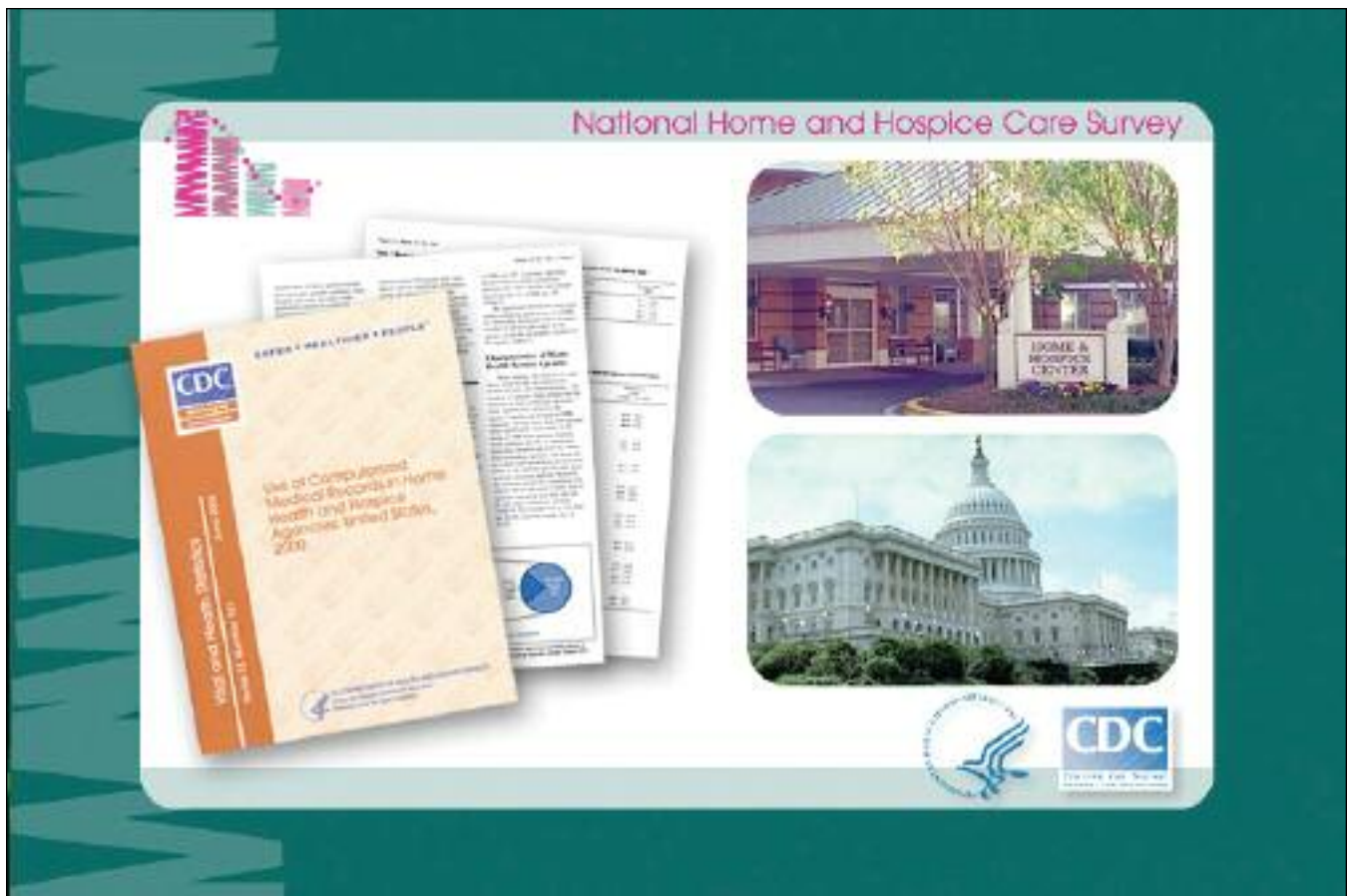
Welcome to the National Home and Hospice Care Survey.



The National Home and Hospice Care Survey (also known as NHHCS) gathers data from a nationally representative sample to describe the nation's home health and hospice care agencies and the health status of their patients.



This survey is part of a family of health care establishment and provider-based surveys conducted by the National Center for Health Statistics (or NCHS).



The data from the National Home and Hospice Care Survey and other NCHS surveys provide critical information to answer important questions and policy issues that are part of the national debate on health care.



Over the past several years, the home health and hospice industry as a whole has witnessed many changes in the kinds of services and care it offers.





As part of the 2007 National Home and Hospice Care Survey, 1,500 (fifteen hundred) home and hospice care agencies around the country will be randomly selected and asked to participate by providing data that will be used to address current and proposed home health and hospice care policy.

The graphic features a teal background with a white central panel. At the top right of the panel, the text 'National Home and Hospice Care Survey' is written in pink. Below this, the text '10,000 home and hospice care agencies' is displayed in large, bold, teal letters. A light green map of the United States is visible in the background. Below the map, five circular images show various scenes: a caregiver assisting an elderly person in a wheelchair, two elderly people talking, a caregiver holding a patient's hand, a caregiver with a patient in a hospital bed, and two elderly women smiling. Below these images, the text '2.2 million elderly, disabled, and chronically ill' is written in bold, teal letters. In the bottom right corner of the white panel, there are two logos: the Department of Health and Human Services logo and the CDC logo.

National Home and Hospice Care Survey

**10,000 home and hospice care agencies**

**2.2 million elderly, disabled, and chronically ill**

DEPARTMENT OF HEALTH AND HUMAN SERVICES  
CENTERS FOR DISEASE CONTROL AND PREVENTION  
CDC  
Division of Field Epidemiology

These randomly selected agencies will represent the more than 10,000 home health and hospice care agencies in the United States that provide care and support to more than 2.2 million elderly, disabled, and chronically ill people.

Your participation guarantees that home health and/or hospice agencies like yours will be adequately represented.





Information from these agencies will provide a comprehensive understanding of how home health and hospice agencies are changing and how their services are used in this country.

## National Home and Hospice Care Survey



The National Home and Hospice Care Survey is a large national survey that, because of its size and design, can provide information that is representative of all home health and hospice agencies in the United States. It is a resource that will serve the country—Congress, policy-makers, the home health and hospice industry, and health care researchers and planners.



Data from each participating agency will be combined and released only in summary form in reports and tables.

No agency, staff, or patients will be individually identified.



Data collection for the National Home and Hospice Care Survey is allowed by the Health Insurance Portability and Accountability Act (HIPAA) and has been approved by the NCHS Ethics Review Board.



HIPAA permits the disclosure of patient data for public health purposes and for research that has been approved by an Ethics Review Board—both of which apply to this survey.

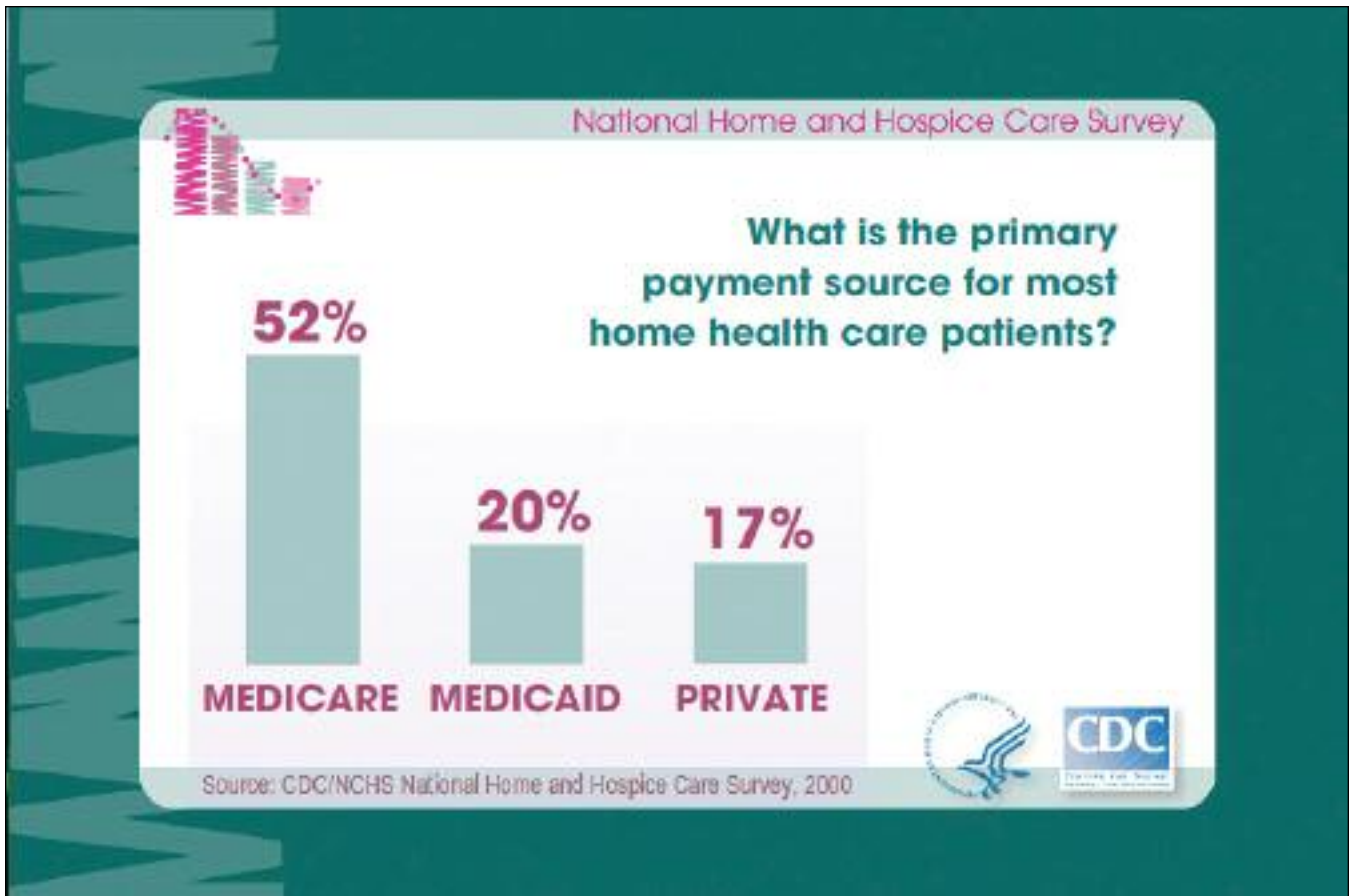




Every home health and hospice care agency that participates in the survey will contribute important information that will help to describe and improve home health and hospice care throughout the country.

Here are a few examples of questions that were answered when the last National Home and Hospice Care Survey was conducted in 2000.



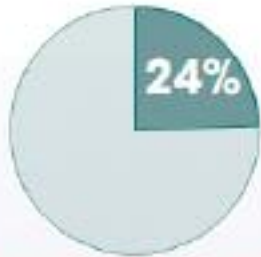


What is the primary payment source for most home health care patients?

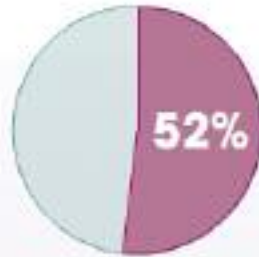
Medicare was the primary payment source for the majority of home health care patients at 52 percent, followed by Medicaid at 20 percent, and private sources, at 17 percent.



### What are the most prevalent primary admission diagnoses for home health and hospice care patients?



Home Health Patients:  
Diseases of the  
Circulatory System



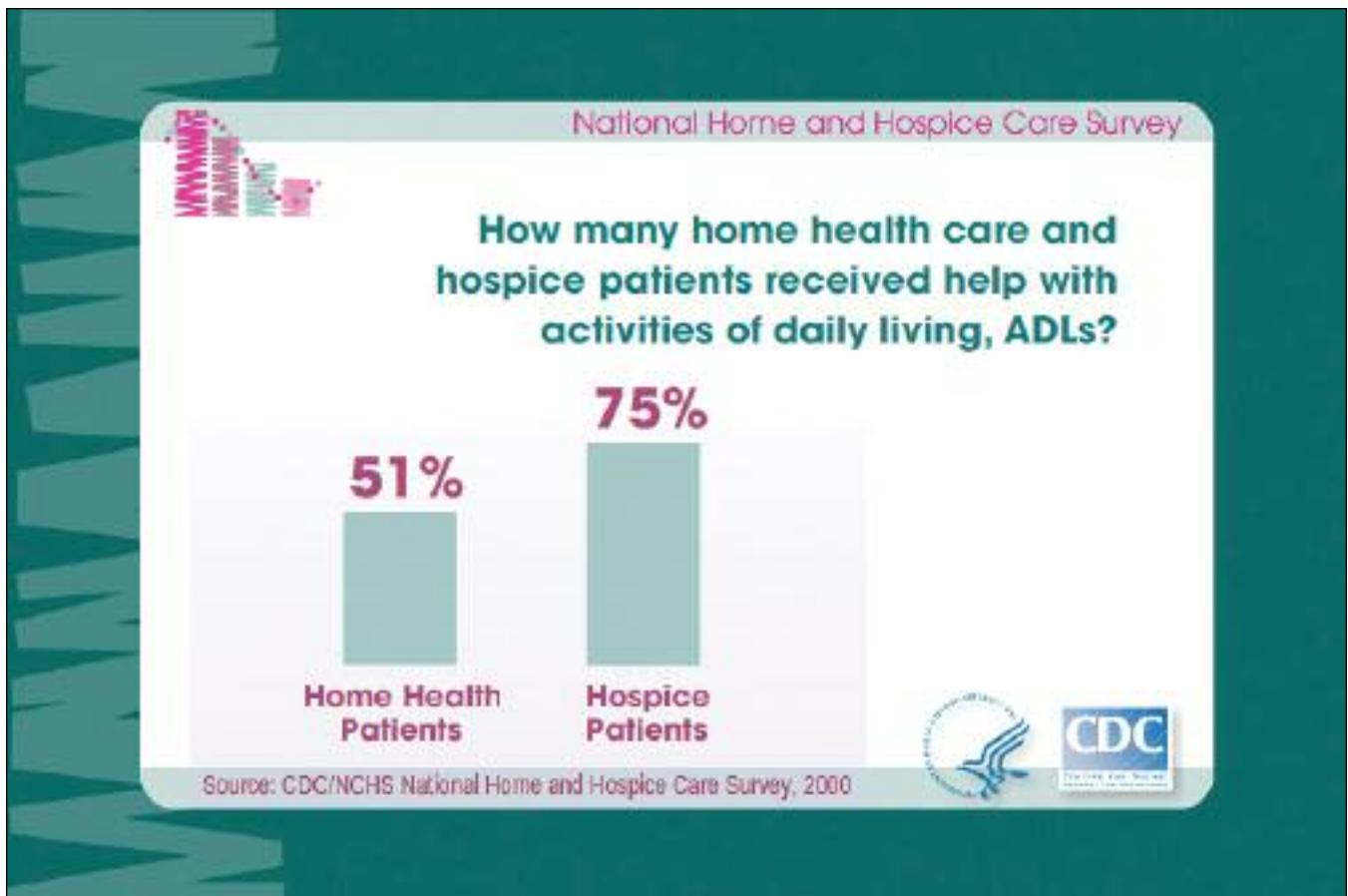
Hospice Patients:  
Malignant  
Neoplasms



Source: CDC/NCHS National Home and Hospice Care Survey, 2000

What are the most prevalent primary admission diagnoses for home health patients and hospice care patients?

The most common diagnoses for home health care patients were diseases of the circulatory system and for hospice care patients, malignant neoplasms.

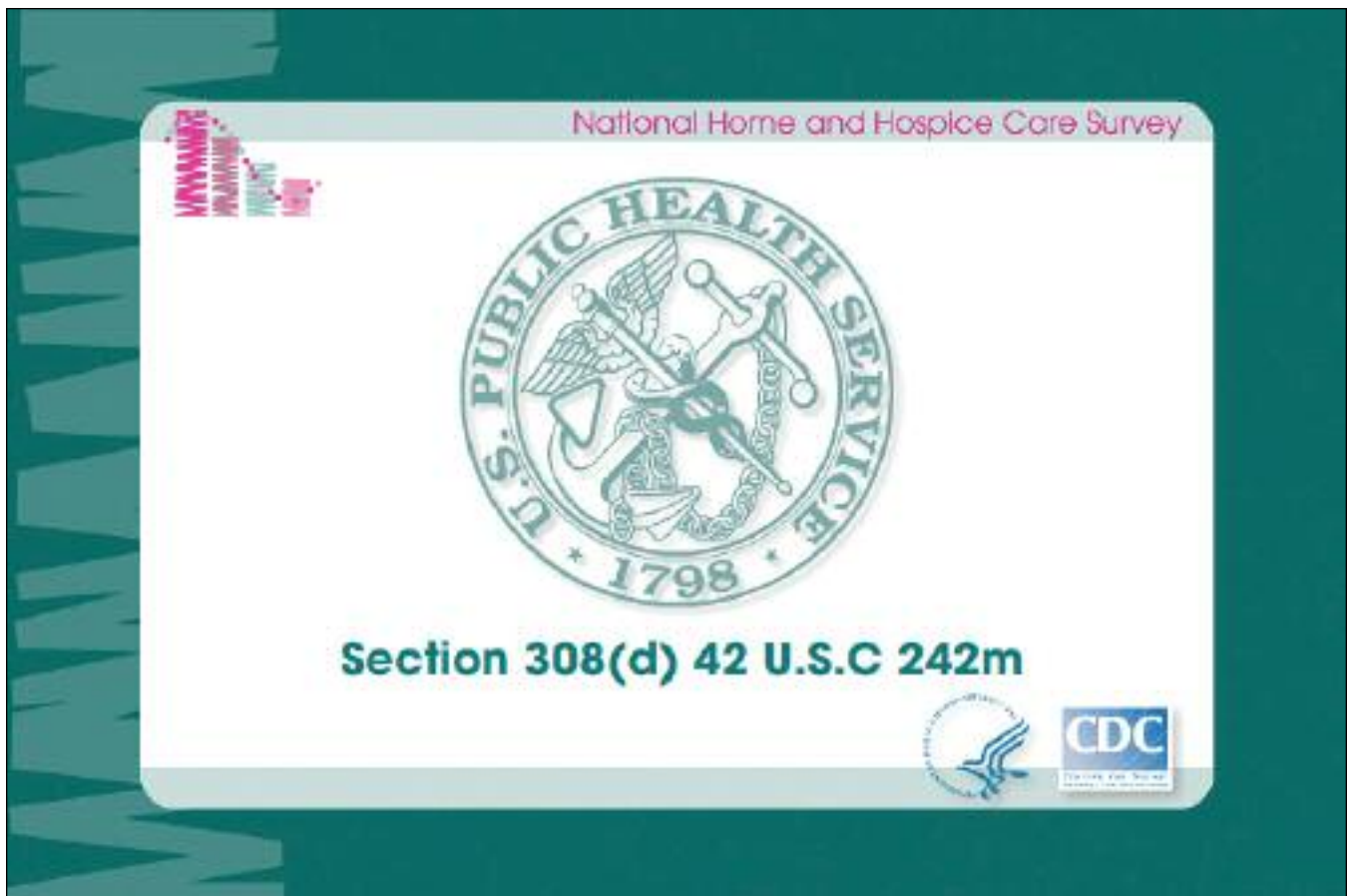


How many home health care and hospice patients received help with activities of daily living, ADLs?

Over half of home health care patients and three-fourths of hospice patients received help from the agency with at least one ADL.



These, and other important data, are provided through the National Home and Hospice Care Survey.



The survey is authorized by the Public Health Service Act, which mandates and authorizes the collection of these data.

The law also states that all information collected is held in the strictest confidence and is to be used only for statistical research and reporting purposes.

## National Home and Hospice Care Survey



## National Association for Home Care & Hospice



## National Hospice and Palliative Care Organization



The National Home and Hospice Care Survey is endorsed by industry associations, including the National Association for Home Care and Hospice, and, the National Hospice and Palliative Care Organization.





The survey will help the home health and hospice industry develop more effective ways of meeting the needs of current and future home health and hospice patients.

## National Home and Hospice Care Survey



The survey uses trained interviewers to gather information directly from agency directors and staff during an in-person visit at your agency.

## National Home and Hospice Care Survey



- **Services**
- **Staff**
- **Patients**
- **Discharges**



The interviewers will use a computer-assisted interviewing instrument to collect data on home health and hospice agencies, their services, their staff, and their patients and discharges, using agency and medical records.

Patients are not contacted directly to collect information.

National Home and Hospice Care Survey



- **Size**
- **Ownership**
- **Certification**
- **Services and care**
- **Basic charges**
- **Staffing**
- **Policies**



The information collected about each agency will include:

- Size,
- Ownership,
- Certification status,
- Types of services and care provided,
- Basic service charges,
- Staffing, and
- Policies.



During the visit, a small sample of current home health patients and hospice discharges will be randomly selected. Agency staff who are familiar with patient records will be asked to use these records to provide information about the selected patients.



- **Demographic characteristics**
- **Health status**
- **Diagnoses**
- **Medications**
- **Services received**
- **Sources of payment**



The patient data collected will include:

- Demographic characteristics,
- Functional and health status,
- Diagnoses,
- Medications,
- Services received, and
- Sources of payment for their home health and hospice care.





- **Name**
- **Social Security Number**
- **Medicare Number**
- **Medicaid Number**

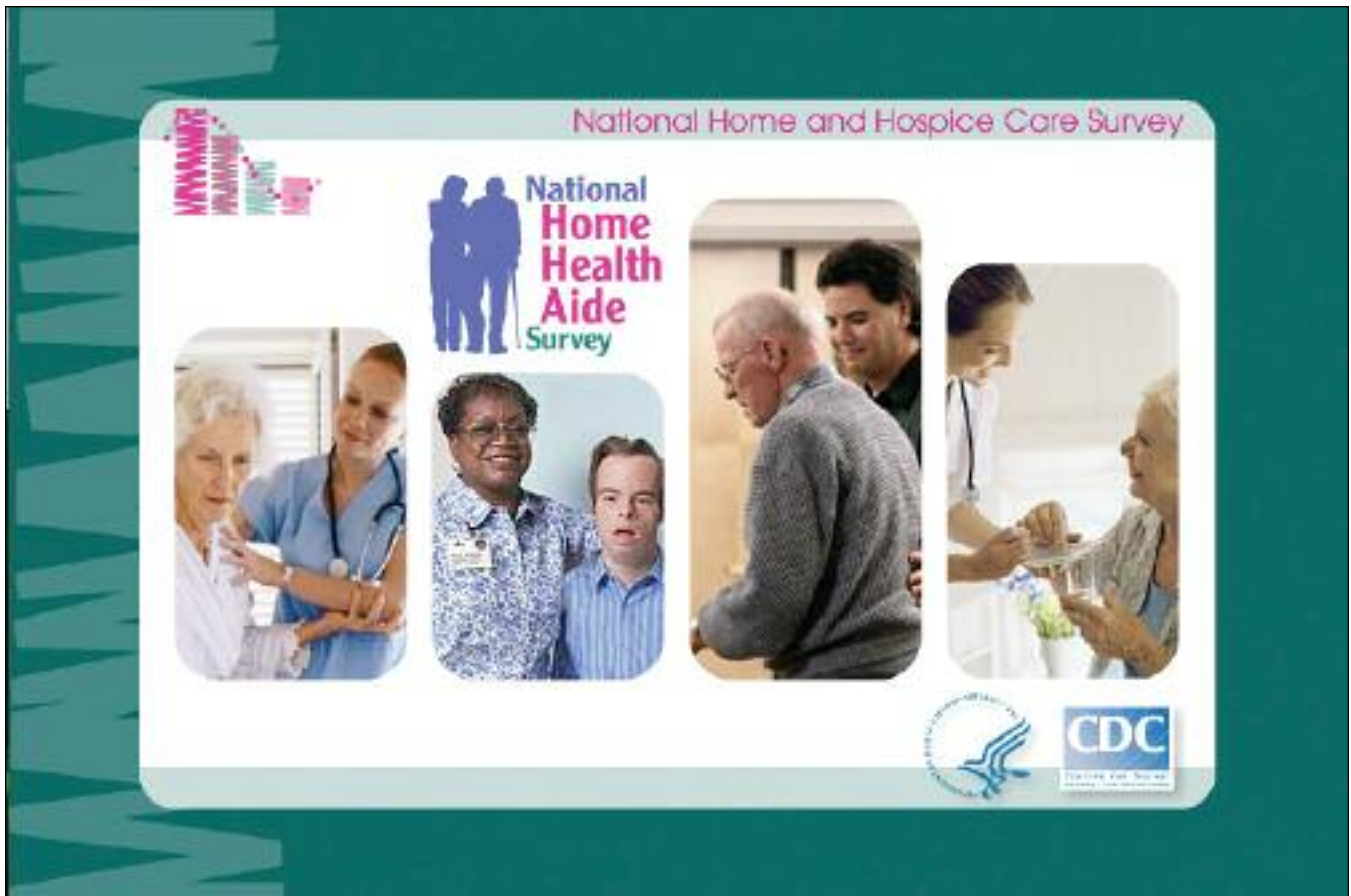
**Matching to  
OASIS data from CMS  
Vital statistics records at NCHS**



The survey will also collect the name, Social Security Number, Medicare Number, and Medicaid Number for each sampled home health patient and hospice discharge.

NCHS will use this information to match to the Outcome and Assessment Information Set or OASIS data from the Centers for Medicare and Medicaid Services for home health patients.

NCHS also plans to use the patient and discharge names and Social Security Numbers for future follow-up studies, such as matching against vital statistics records at NCHS.



This year, some home health and hospice agencies will also be asked to participate in a first-ever, nationwide survey of home health aides.

Home health aides provide the majority of direct care to people receiving home health and hospice care services.



For the National Home Health Aide Survey (also referred to as the NHHAS), a sample of 6,000 home health aides will be selected to participate in a telephone interview during non-working hours.



Up to 8 aides employed to assist patients with activities of daily living will be selected from each agency at the time of the agency visit.

Each home health aide who participates in the survey will receive \$35.



The National Home Health Aide Survey is sponsored by the Department of Health and Human Services, which has made the long-term care workforce a major focus of its policy research agenda.





In 2004, the Department of Health and Human Services also sponsored the National Nursing Assistant Survey (the NNAS), the first ever national survey of nursing assistants working in nursing homes.



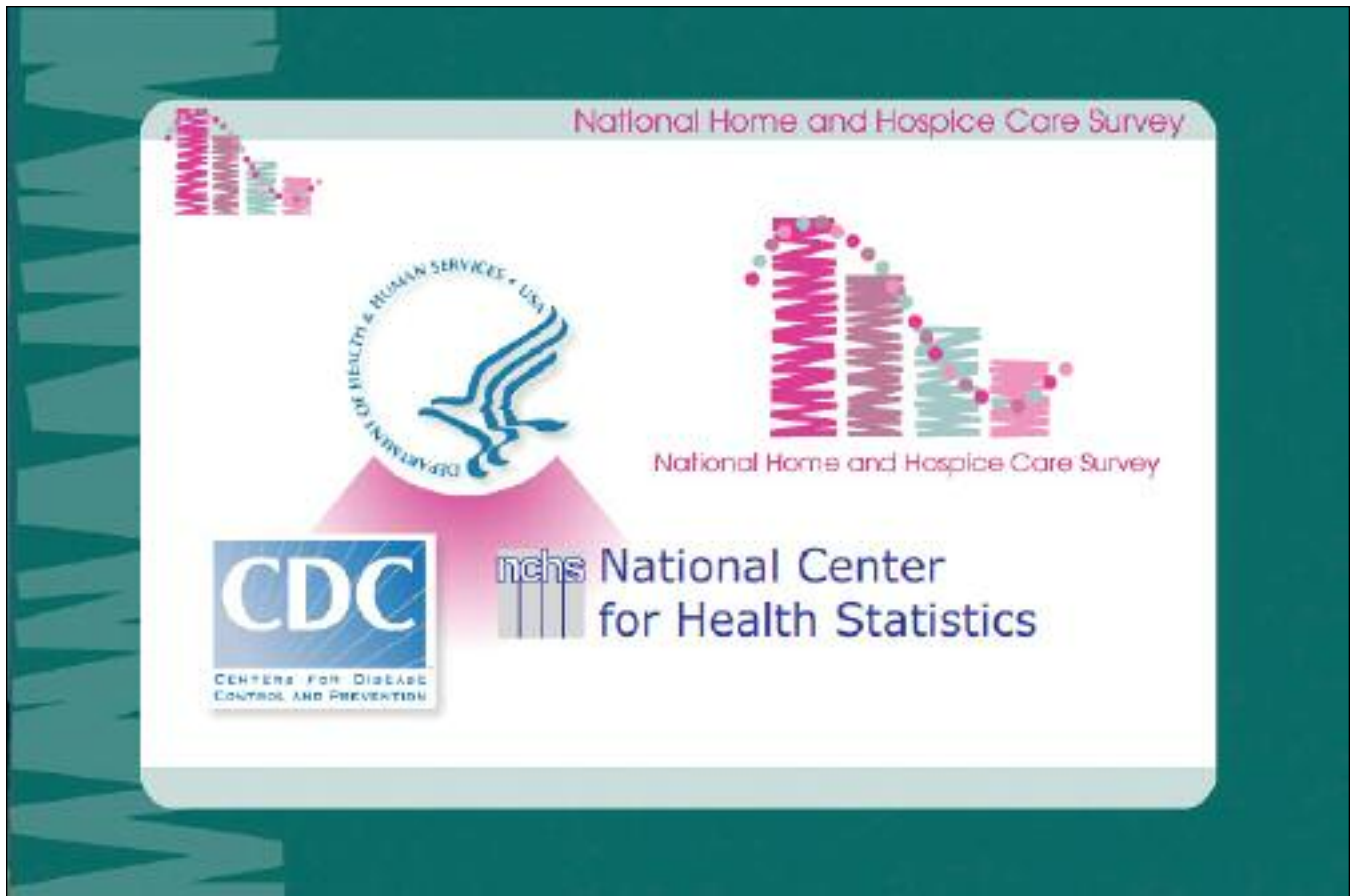


Together, the National Home Health Aide Survey and the National Nursing Assistant Survey will improve our understanding of the direct care workforce.

These surveys will provide data to help address the pending shortage in the long-term care workforce and the challenges long-term care providers face in ensuring there are enough experienced home health aides to provide high quality care.



Westat, a nationally known survey research organization with headquarters in the Washington, DC area will collect the National Home and Hospice Care Survey and the National Home Health Aide Survey data under contract with NCHS.



The National Home and Hospice Care Survey is sponsored by the Centers for Disease Control and Prevention's National Center for Health Statistics.

Both CDC and NCHS are part of the U.S. Department of Health and Human Services.



NCHS, as the nation's principal health statistics agency, provides accurate, relevant, and timely data to identify and address health issues.

NCHS' statistical data help to guide our country's public health and health policy decisions.



Thank you for taking the time to learn about this important national health care survey conducted by NCHS.

We look forward to your participation!



For more information about uses of the National Home and Hospice Care Survey and the National Home Health Aide Survey data, or for access to the data for your own research, navigate on this website when the video has ended.

**[www.cdc.gov/nchs/nhhcs.htm](http://www.cdc.gov/nchs/nhhcs.htm)**