

Production Estimates and Crop Assessment Division
Foreign Agricultural Service, USDA

So. Oregon & No. California
April 4, 2001

For more information, contact Carl Gernazio
gernazio@fas.usda.gov
www.fas.usda.gov/pecad/

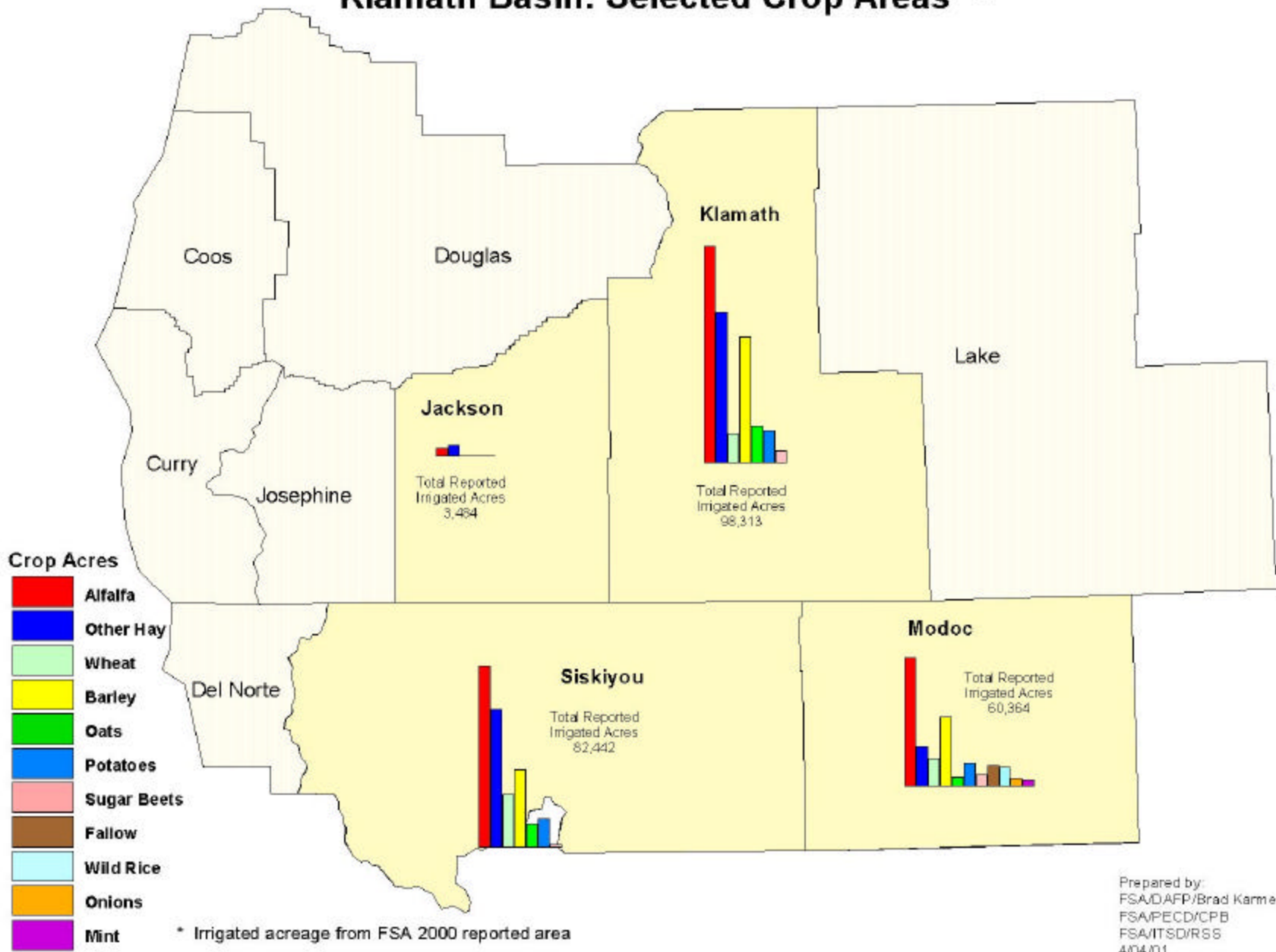
FSA-FAS Center for Remote Sensing Analysis



Northern California & Southern Oregon - 2001

- Precipitation for winter 2000/2001 has been below normal, and much below Winters of 1999 and 2000. This is true of the entire Pacific Northwest and the northern-most counties of California.
- Moisture is the limiting factor for winter wheat, barley, hay crops, and pastures. Summer crops will be very dependent on irrigation.
- Landsat satellite images from August 2000 give a good indication of the amount of crops normally irrigated in these counties.

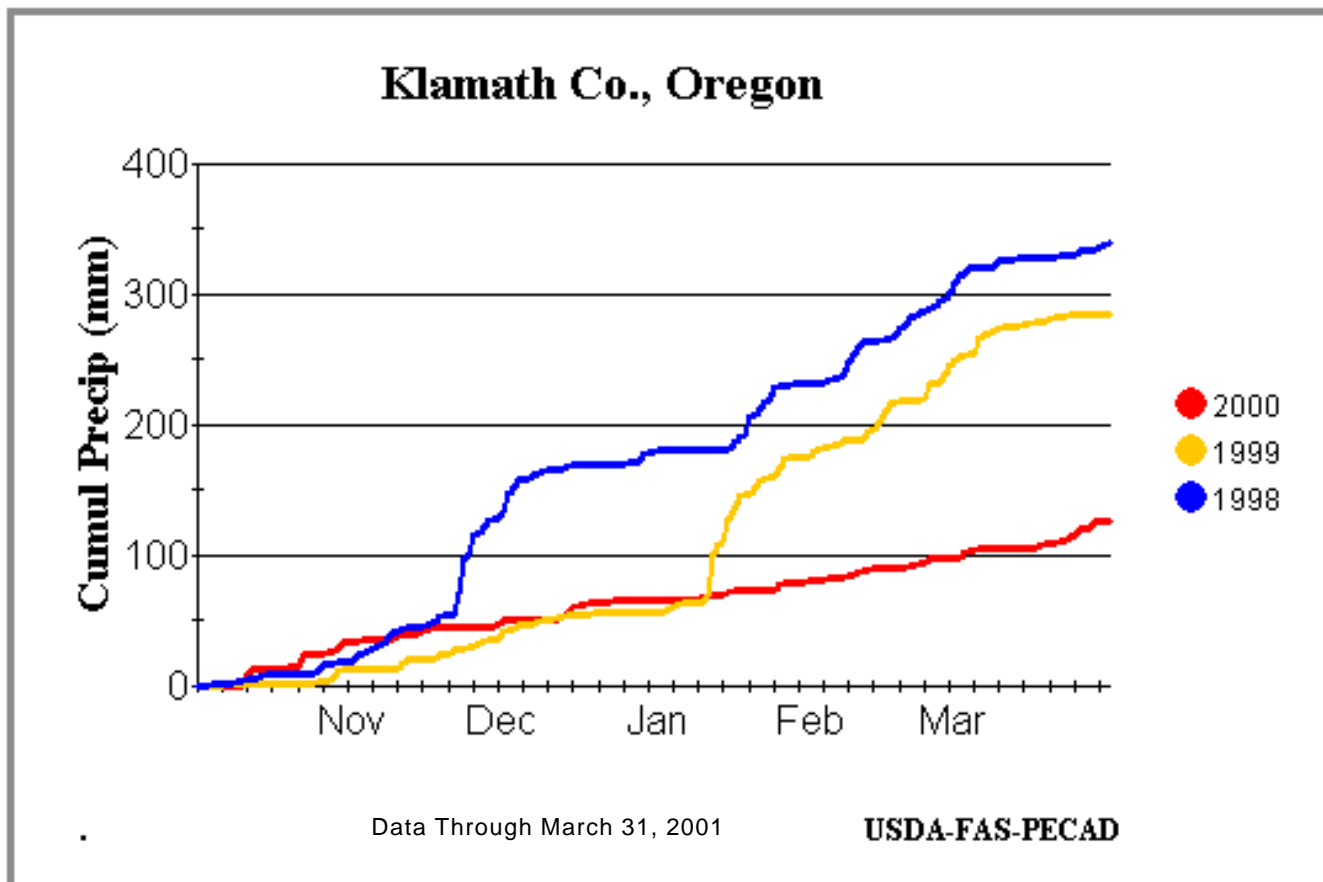
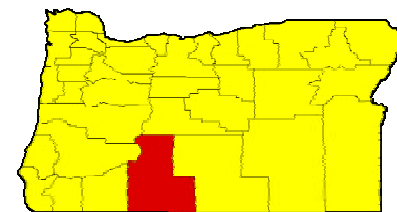
Klamath Basin: Selected Crop Areas *



Prepared by:
 FSA/DAPP/Brad Karmen
 FSA/PECD/CPB
 FSA/ITSD/RSS
 4/04/01

* Irrigated acreage from FSA 2000 reported area

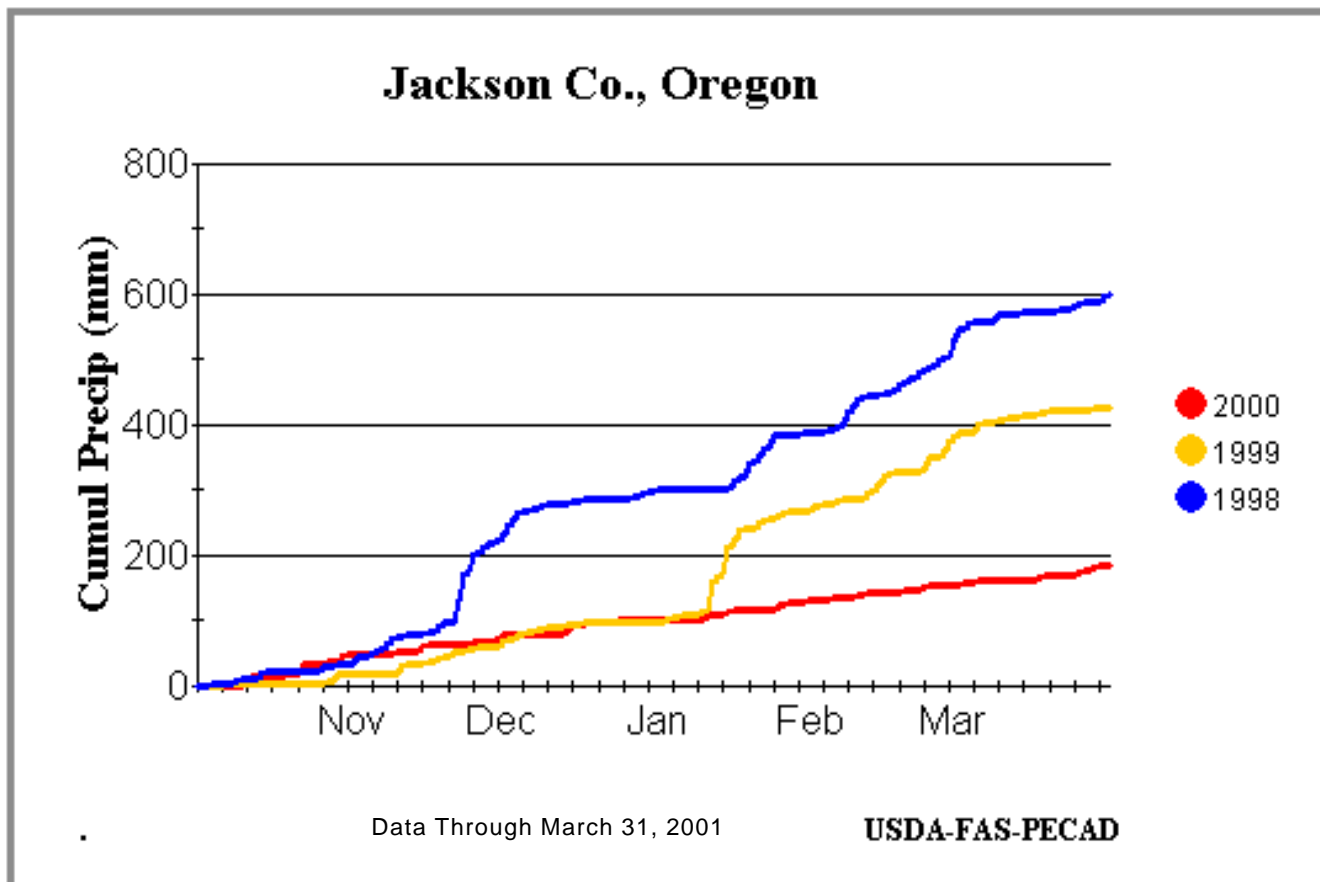
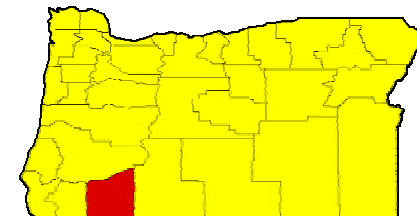
Klamath Co., Oregon



Cumulative Precipitation Comparison

Data Source: U.S. Air Force Grid Cell data
25.4 millimeters = 1 inch

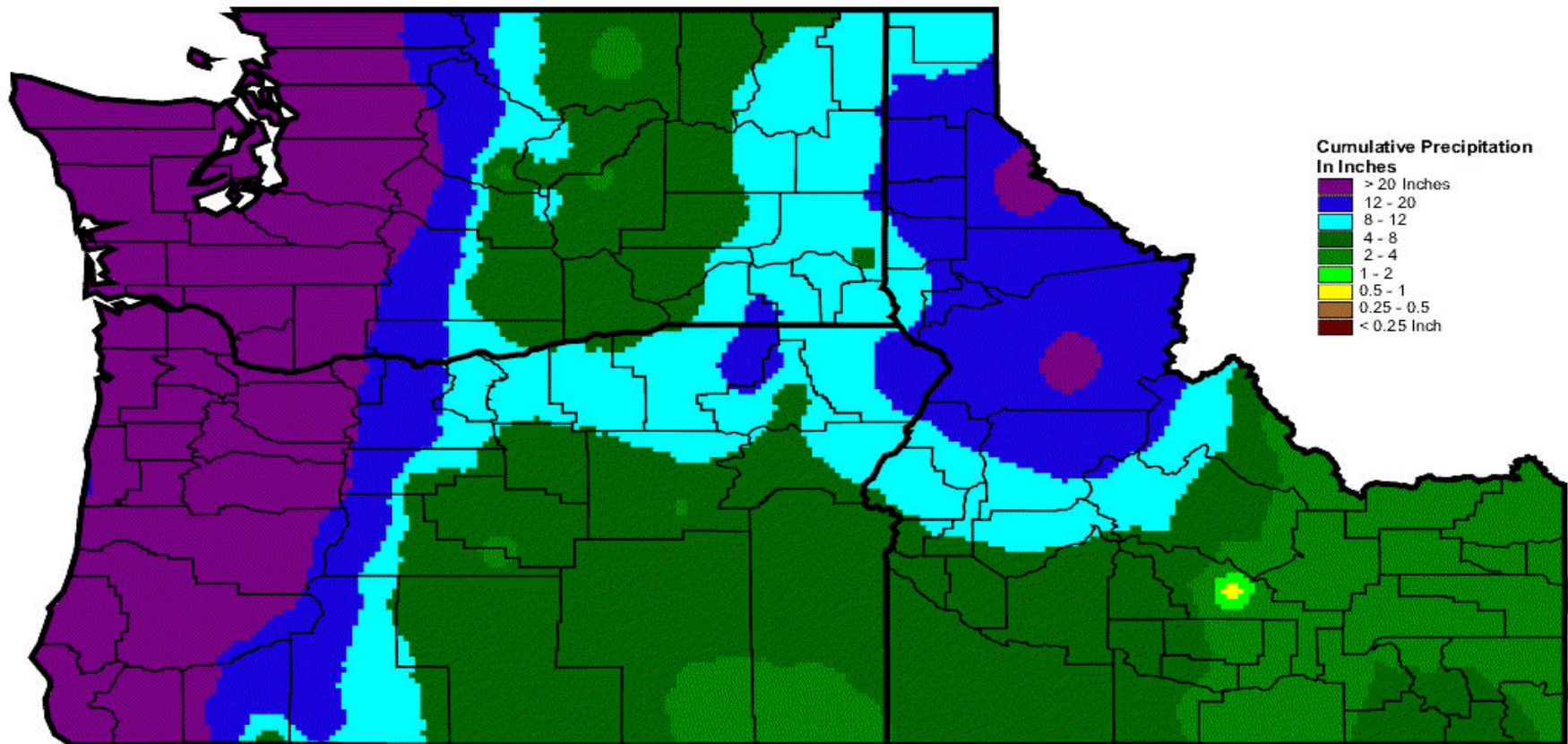
Jackson Co., Oregon



Cumulative Precipitation Comparison

Data Source: U.S. Air Force Grid Cell data
25.4 millimeters = 1 inch

Pacific Northwest Cumulative Precipitation



October 1, 1999 - March 31, 2000

Data Source: U.S. Air Force
Grid Cell System

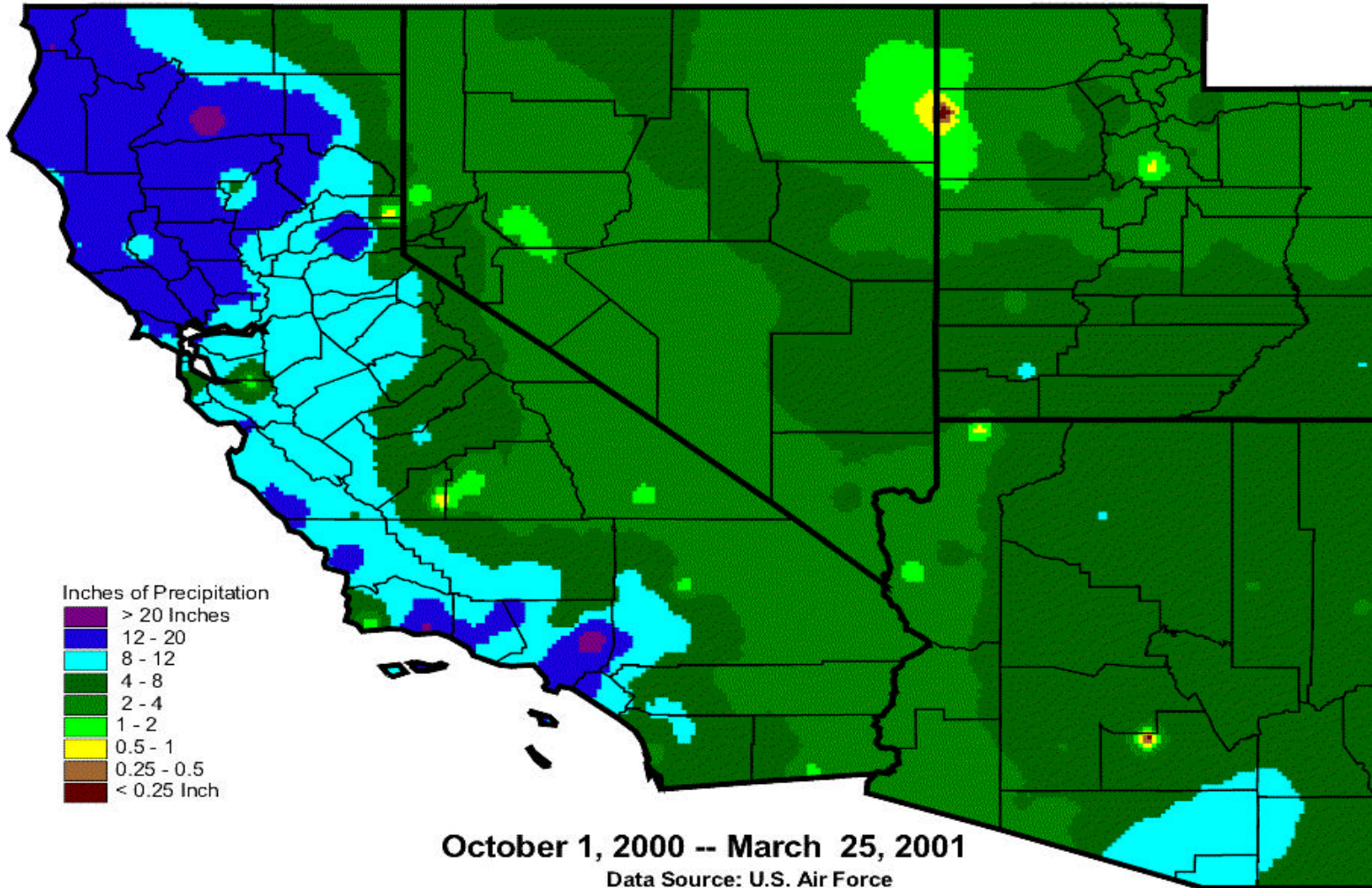
GIS = Arcview 3.2







Southwest States Cumulative Precipitation



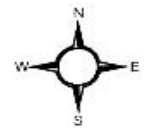
October 1, 2000 -- March 25, 2001

Data Source: U.S. Air Force
Grid Cell System

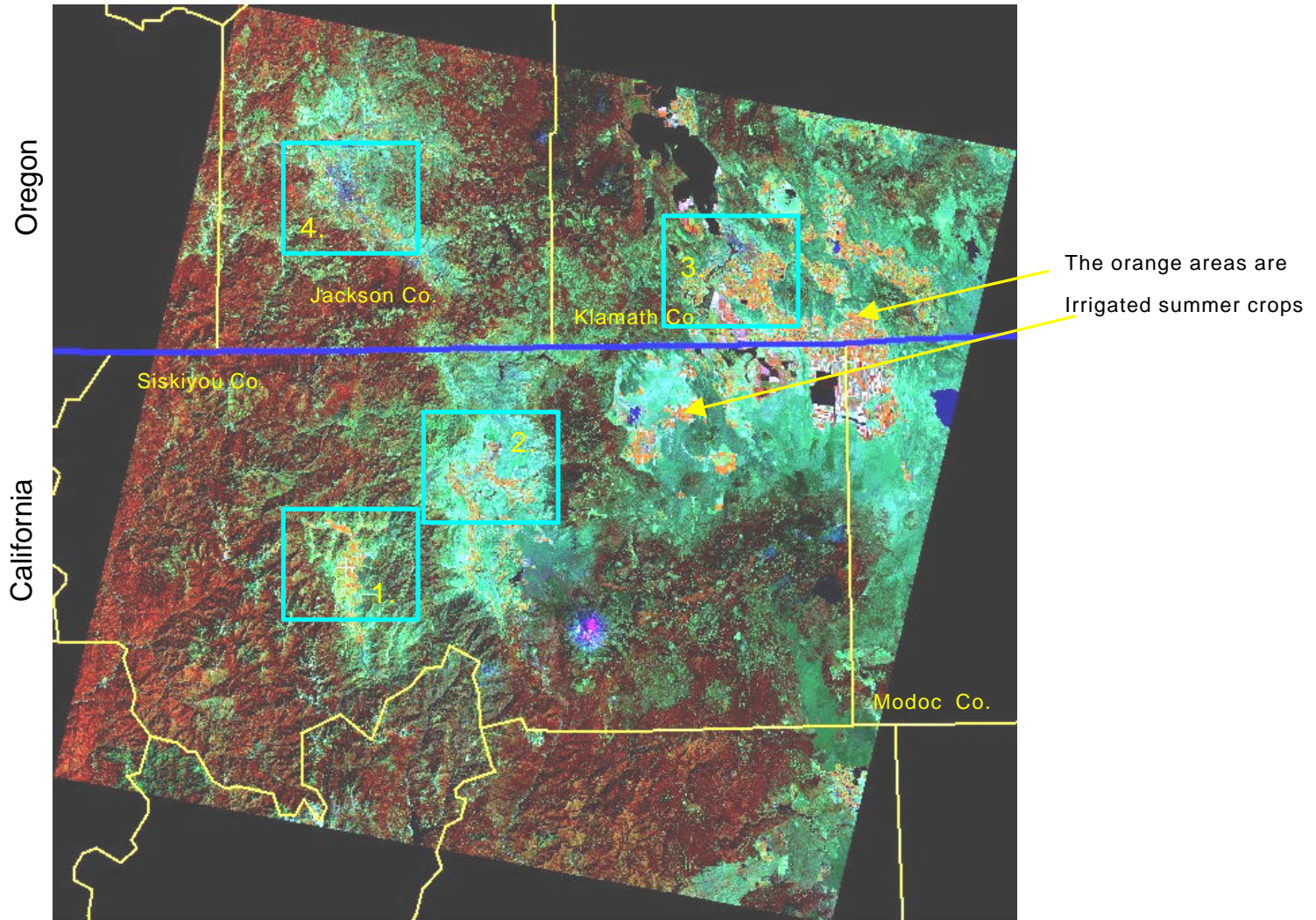
GIS = ArcView 3.2

USDA Production Estimates and
Crop Assessment Division
Foreign Agricultural Service

<http://fas.usda.gov/pecad/pecad.html>



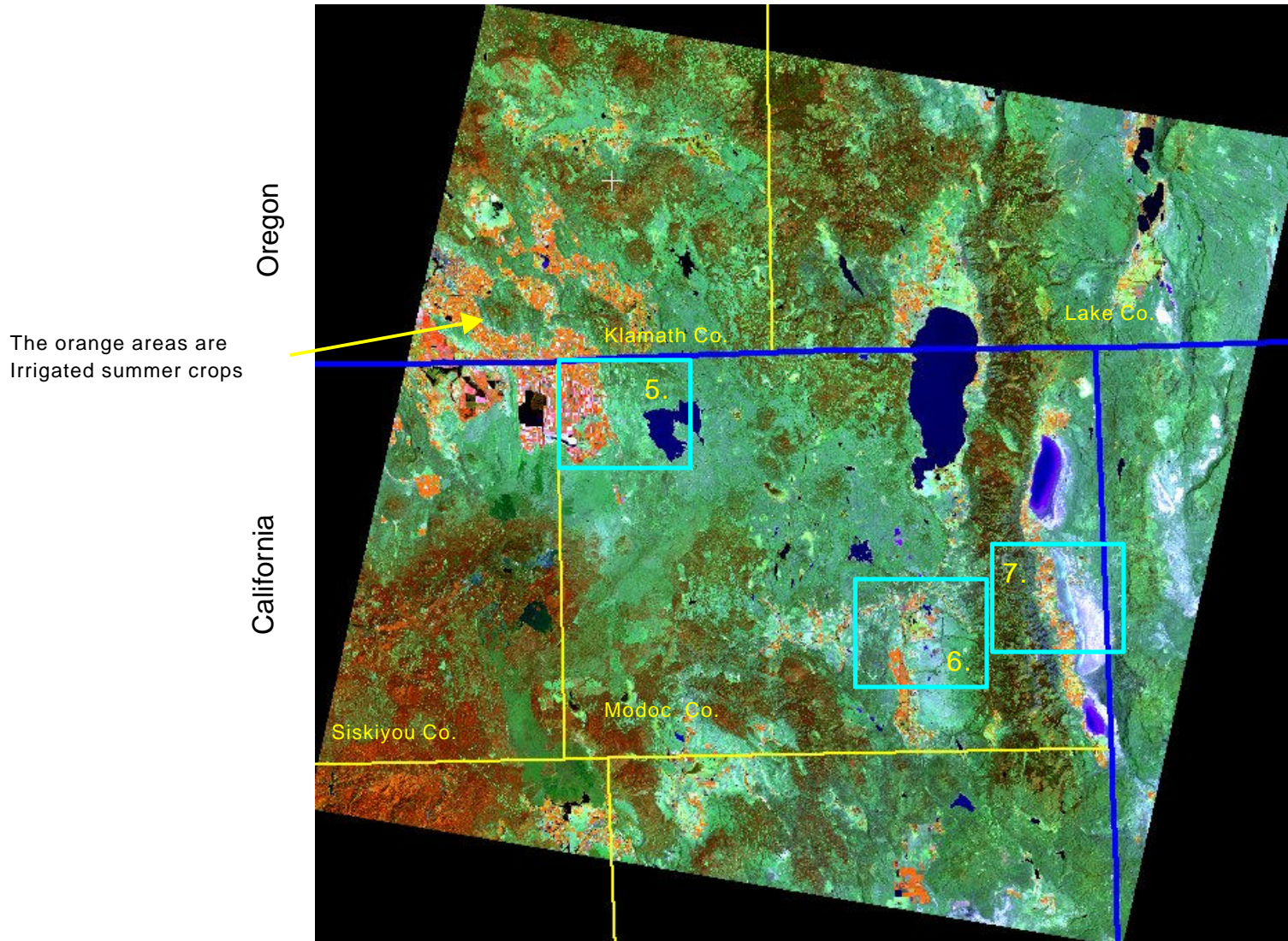
Landsat Scene 045 – 031



Landsat TM 5, Ch. 4,5,3 = RGB

August 25, 2000

Landsat Scene 044 – 031

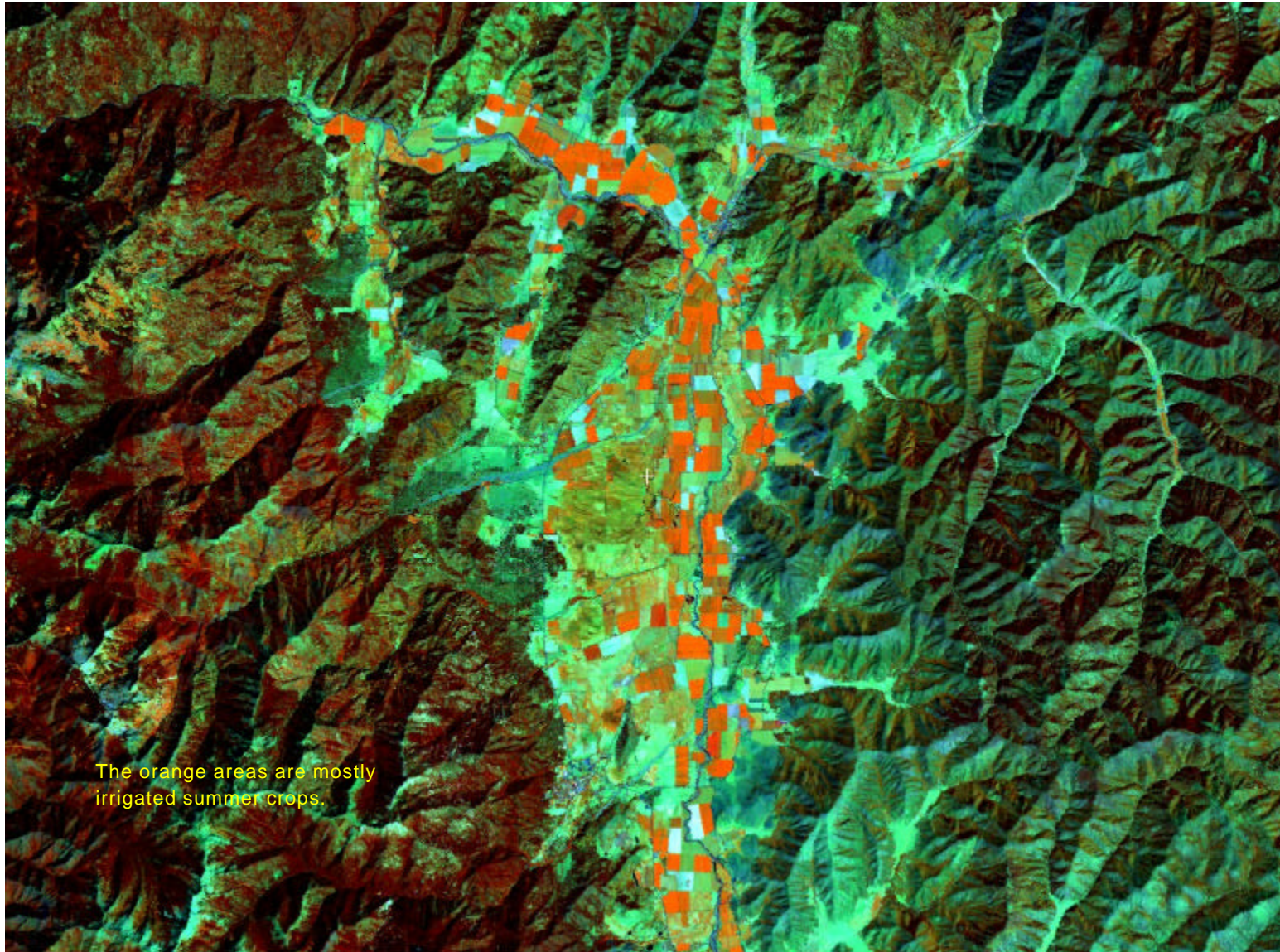


The orange areas are
Irrigated summer crops

Landsat TM 5, Ch. 4,5,3 = RGB

August 18, 2000

Image 1. From Siskiyou Co., California

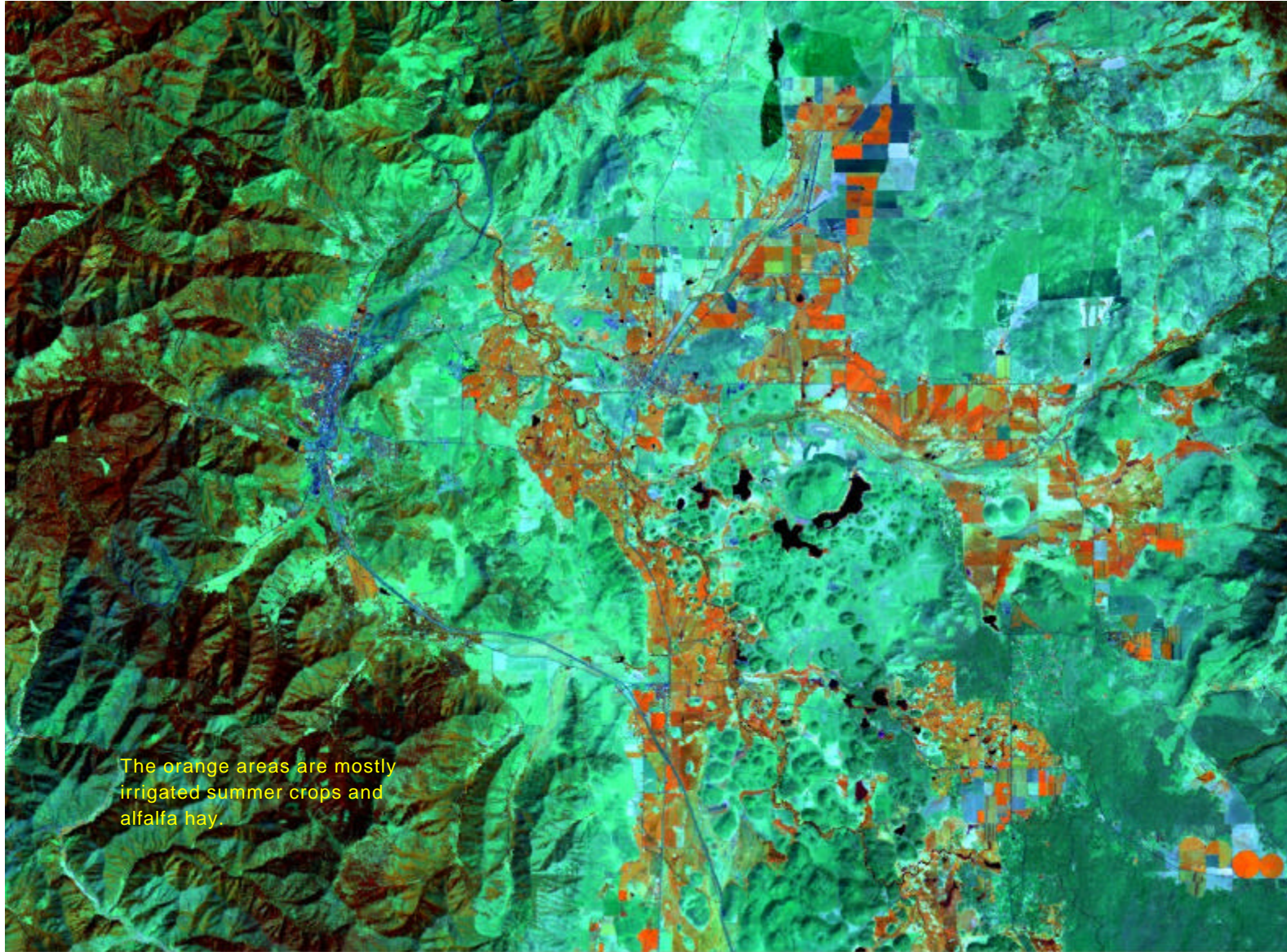


The orange areas are mostly irrigated summer crops.

Landsat TM 5, Ch. 4,5,3 = RGB

August 25, 2000

Image 2. Yreka, California



Landsat TM 5, Ch. 4,5,3 = RGB

August 25, 2000

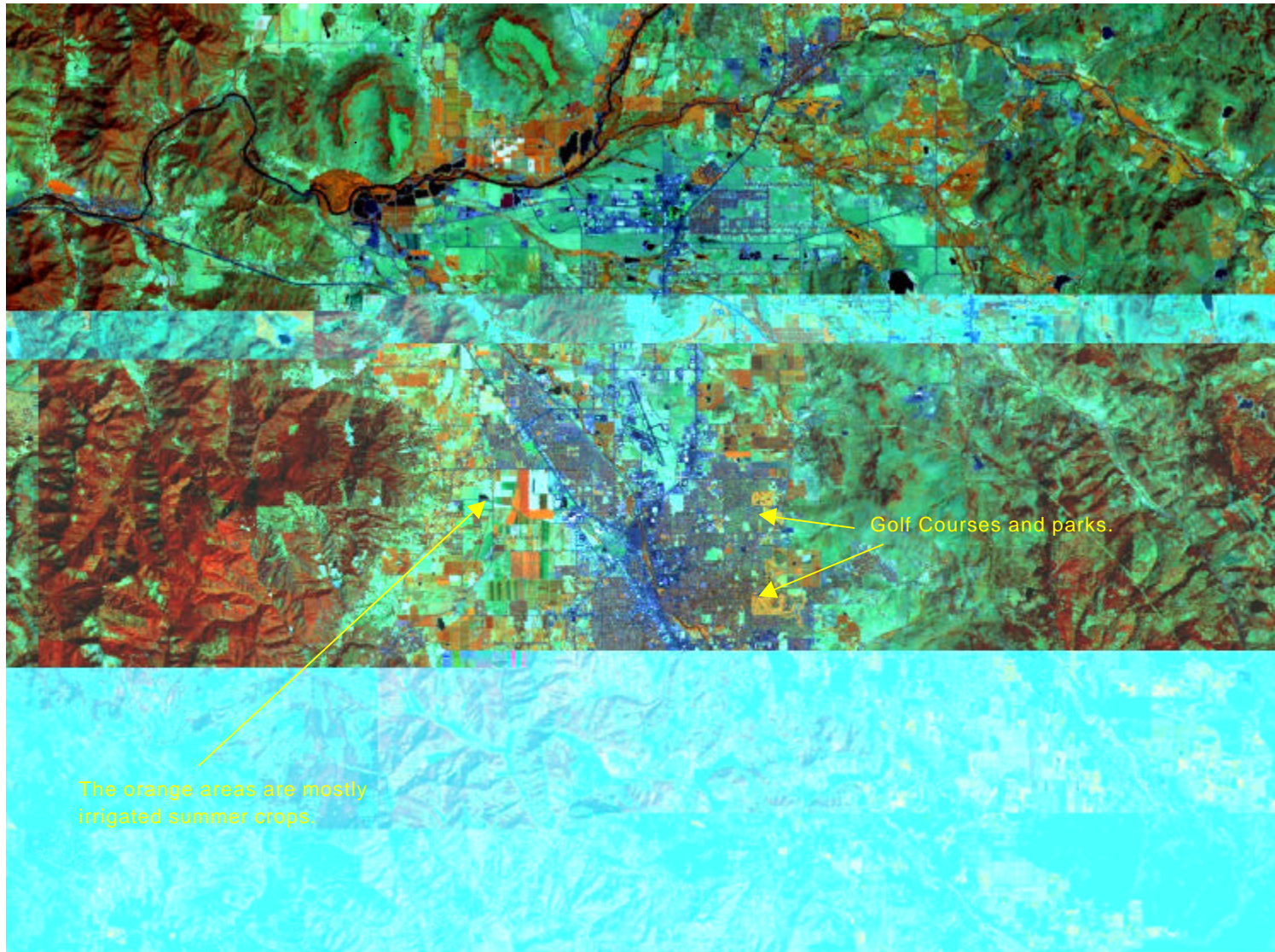
Image 3. Klamath Falls, Oregon



Landsat TM 5, Ch. 4,5,3 = RGB

August 25, 2000

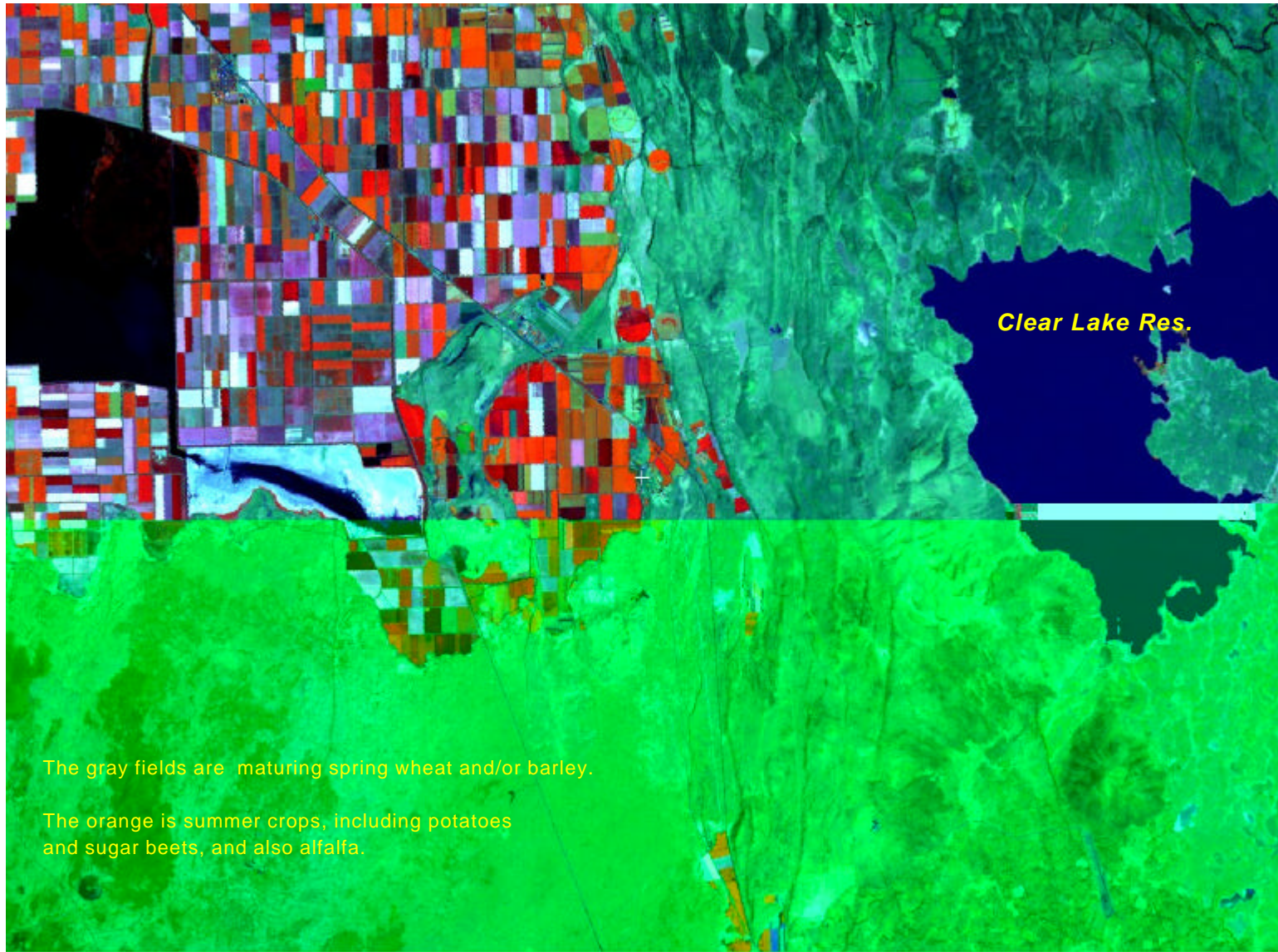
Image 4. Medford, Oregon



Landsat TM 5, Ch. 4,5,3 = RGB

August 25, 2000

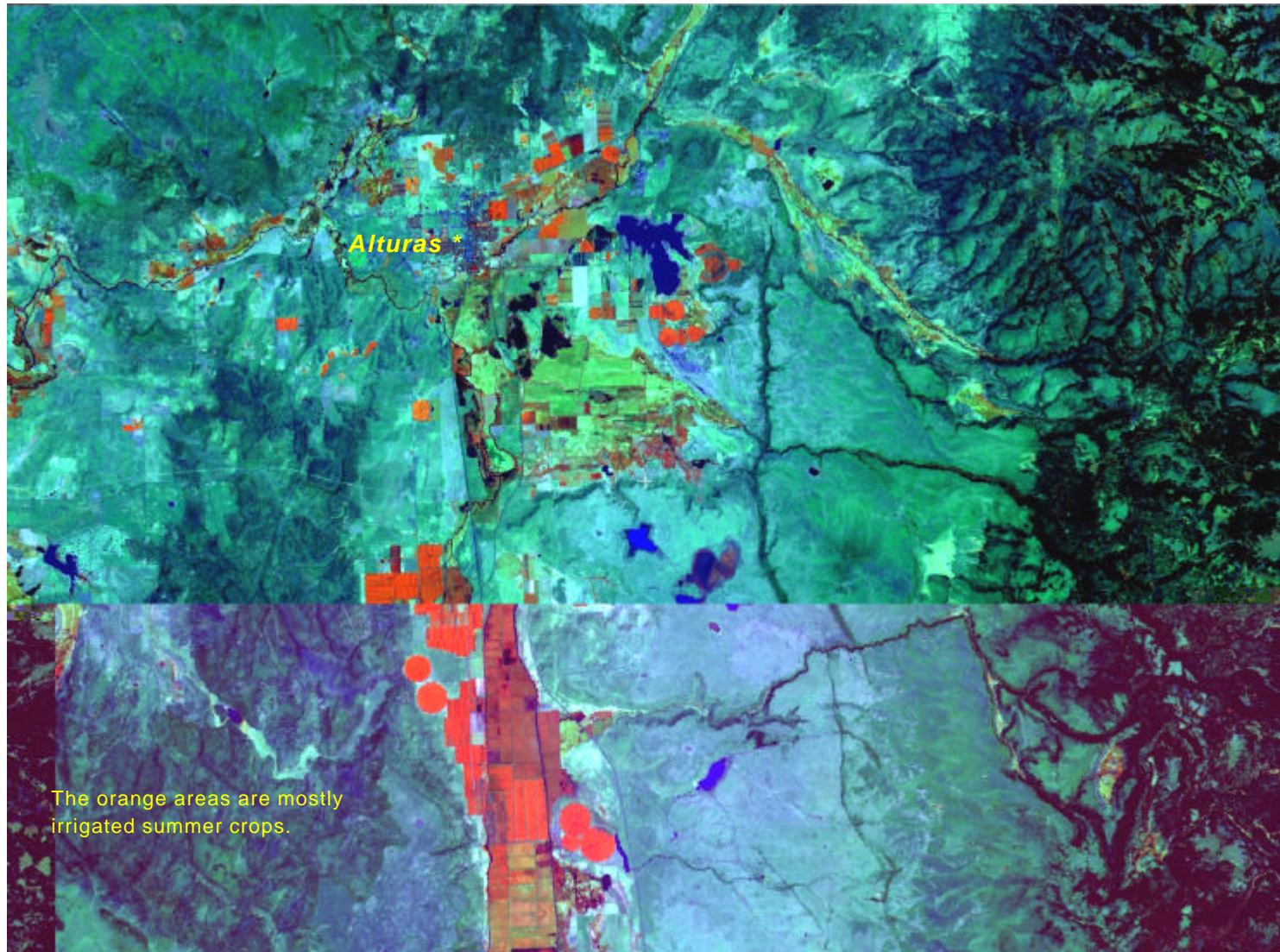
Image 5. Modoc Co., California



Landsat TM 5, Ch. 4,5,3 = RGB

August 18, 2000

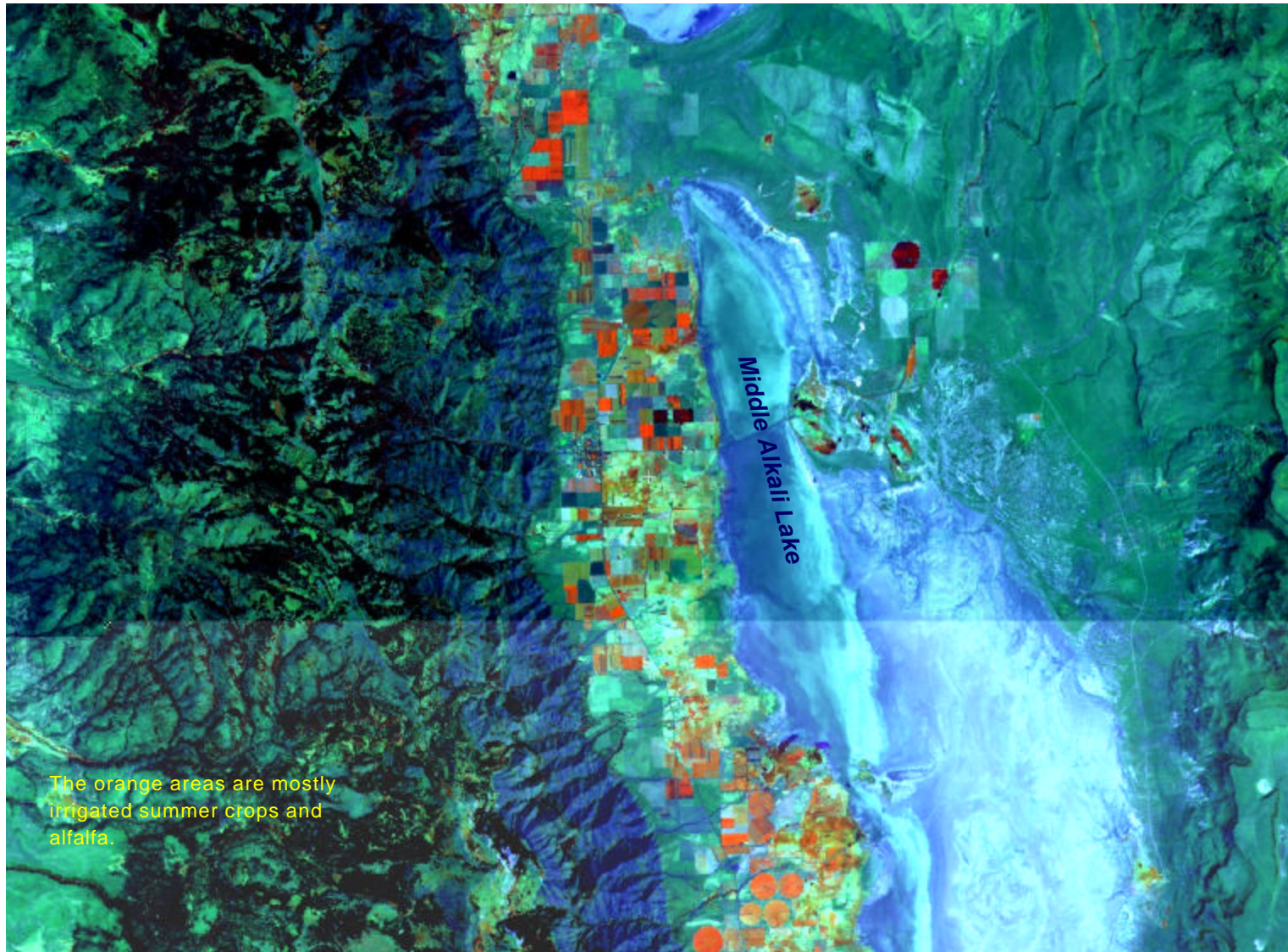
Image 6. Modoc Co., California at Alturas



Landsat TM 5, Ch. 4,5,3 = RGB

August 18, 2000

Image 7. Modoc Co., California at Middle Alkali Lake



Landsat TM 5, Ch. 4,5,3 = RGB

August 18, 2000