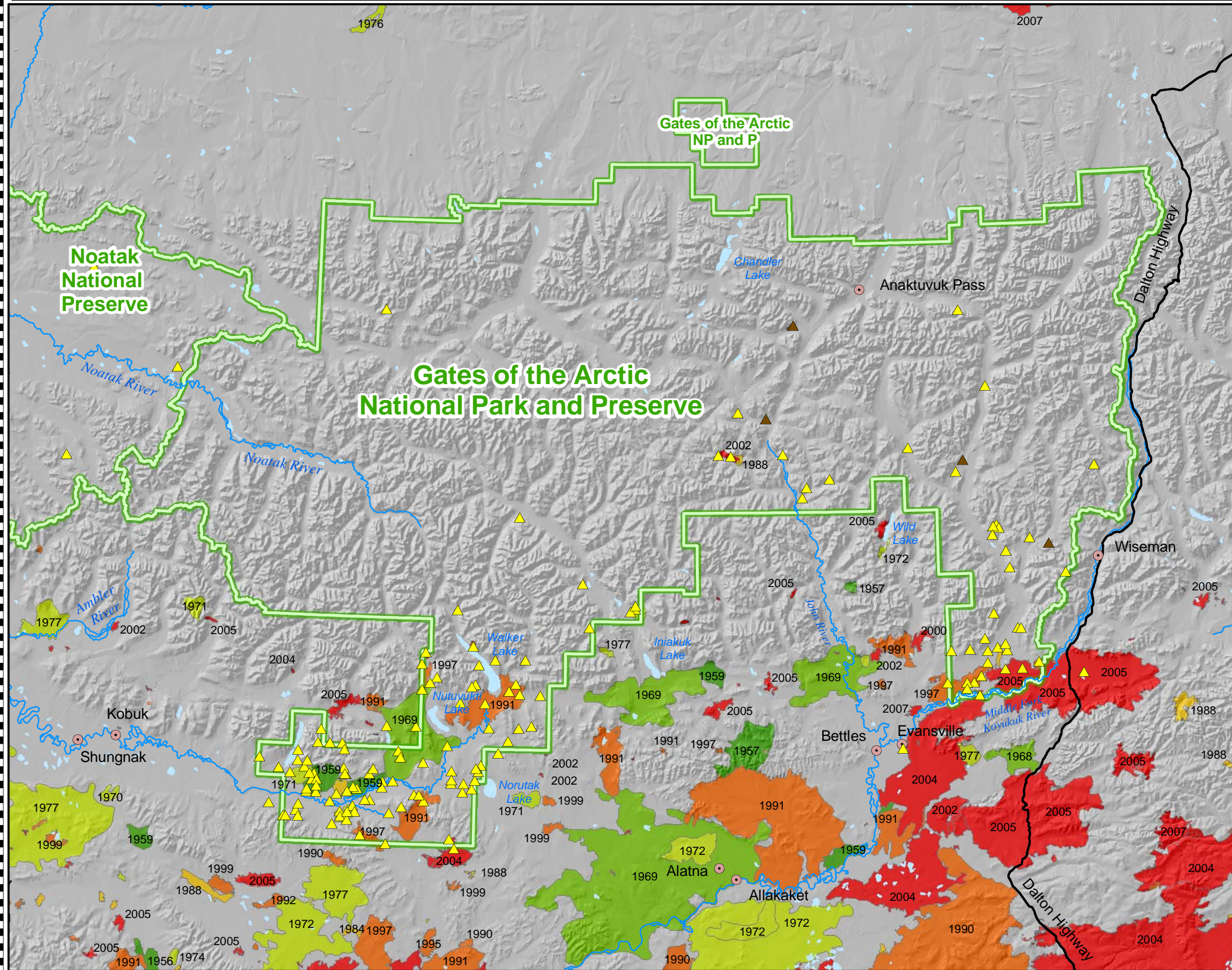


# Gates of the Arctic National Park and Preserve

Fire History: 1950 - 2007

Alaska Region  
National Park Service  
U. S. Department of the Interior



**Towns / Villages**

**Roads**

**Ignition Locations**

- Natural Cause
- Human Cause

Note: Ignition Locations displays point locations of fires directly affecting Gates of the Arctic National Park and Preserve.

**Large Fire Perimeters**

- 1950 - 1959
- 1960 - 1969
- 1970 - 1979
- 1980 - 1989
- 1990 - 1999
- 2000 - 2007

National Park Service  
Alaska Support Office  
Fire Management Program

1:1,250,000

0 5 10 20 30 40 Miles

