



MT. MAGAZINE HIKING TRAIL

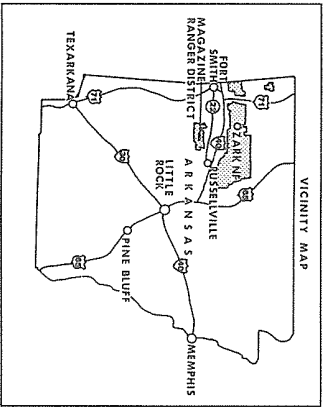


Magazine Ranger District
Ozark-St. Francis National Forests

Forest Service Southern Region

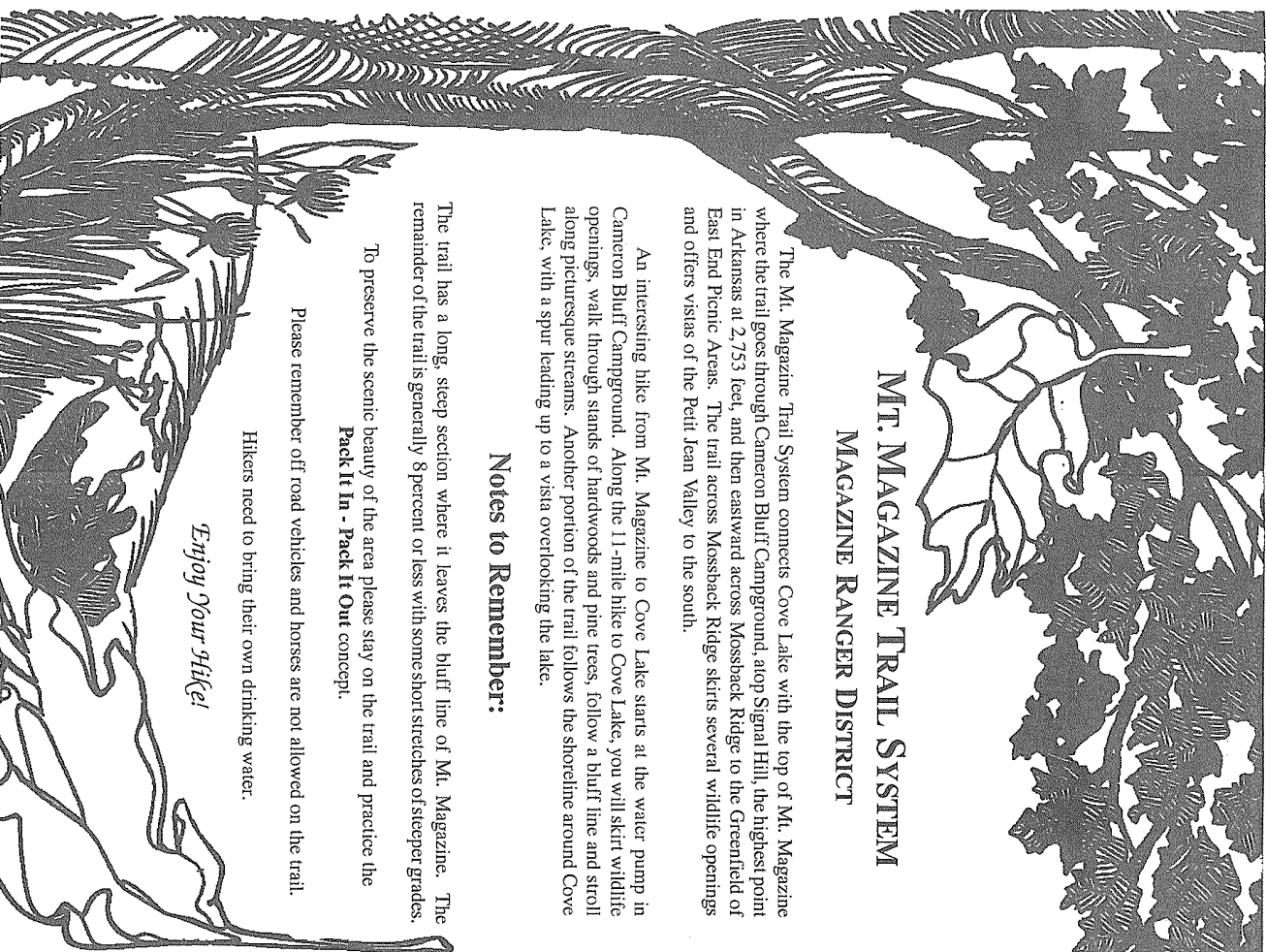
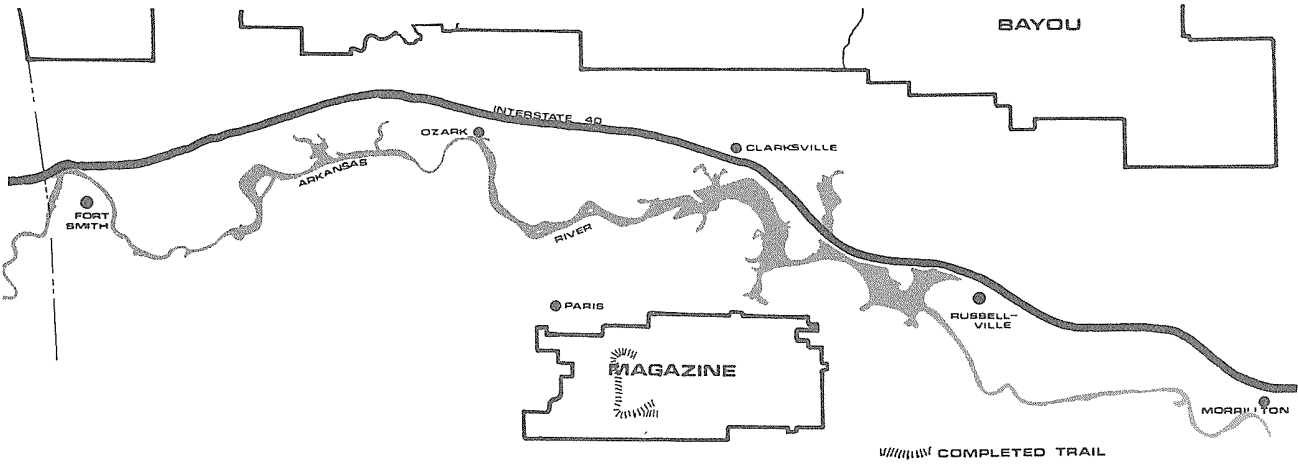


United States Department of Agriculture



For more information, contact:
Magazine Ranger District
 P. O. Box 511 (op) 3001 East Walnut
 Paris, AR 72855
 (501) 963-3076

The United States Department of Agriculture (USDA) prohibits discrimination in all its programs and activities on the basis of race, color, national origin, gender, age, disability, political beliefs, sexual orientation, and marital or family status. Individuals who believe they have been discriminated against by USDA should contact the USDA National Center for Consumer and Complaint Assistance, 1417 Green Road, Washington, D.C. 20250-9410 (voice or TDD). USDA is an equal opportunity provider and employer.



MT. MAGAZINE TRAIL SYSTEM MAGAZINE RANGER DISTRICT

The Mt. Magazine Trail System connects Cove Lake with the top of Mt. Magazine where the trail goes through Cameron Bluff Campground, atop Signal Hill, the highest point in Arkansas at 2,753 feet, and then eastward across Mossback Ridge to the Greenfield of East End Picnic Areas. The trail across Mossback Ridge skirts several wildlife openings and offers vistas of the Petit Jean Valley to the south.

An interesting hike from Mt. Magazine to Cove Lake starts at the water pump in Cameron Bluff Campground. Along the 11-mile hike to Cove Lake, you will skirt wildlife openings, walk through stands of hardwoods and pine trees, follow a bluff line and stroll along picturesque streams. Another portion of the trail follows the shoreline around Cove Lake, with a spur leading up to a vista overlooking the lake.

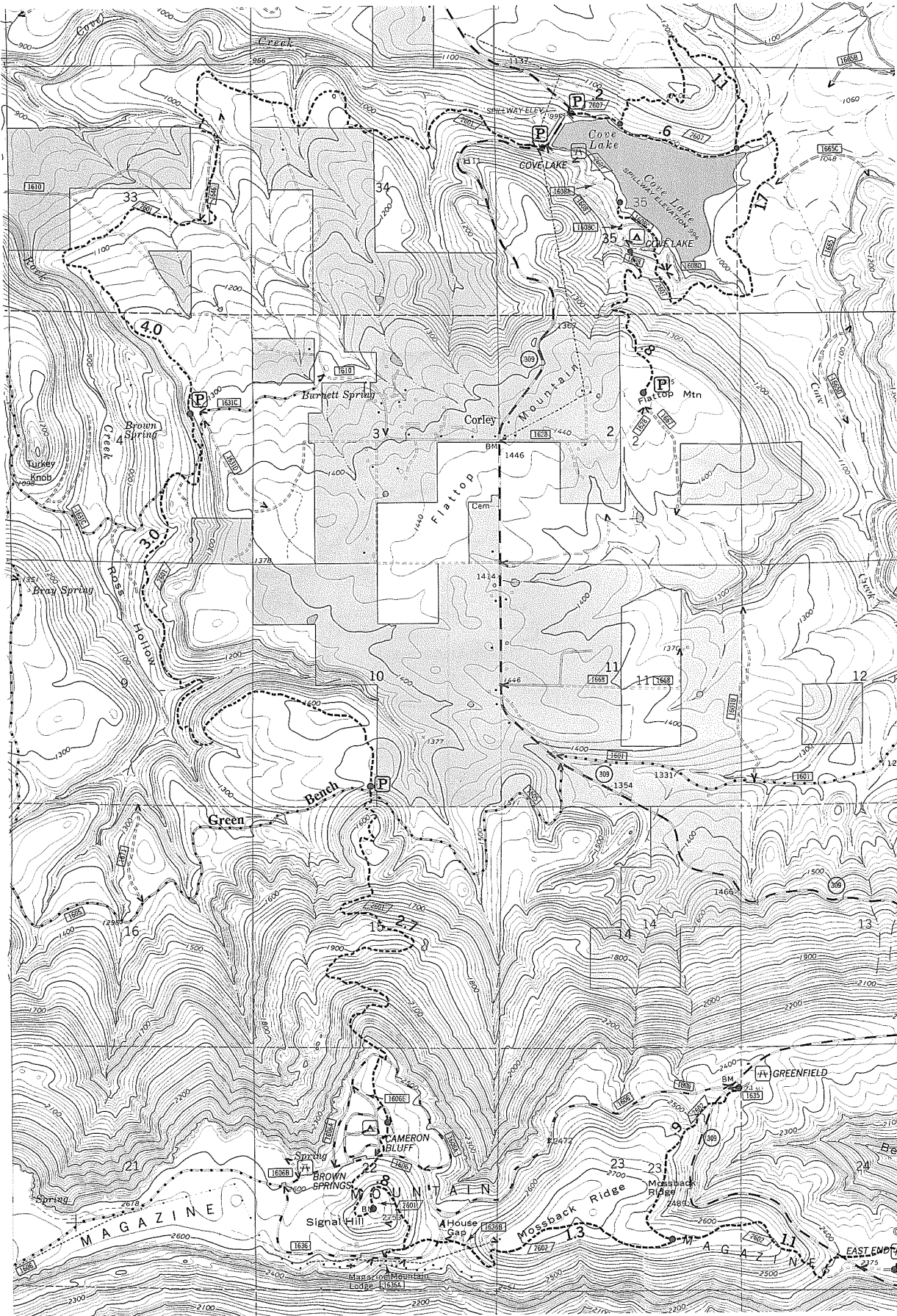
Notes to Remember:

The trail has a long, steep section where it leaves the bluff line of Mt. Magazine. The remainder of the trail is generally 8 percent or less with some short stretches of steeper grades.

To preserve the scenic beauty of the area please stay on the trail and practice the **Pack It In - Pack It Out** concept.

Please remember off road vehicles and horses are not allowed on the trail.
 Hikers need to bring their own drinking water.

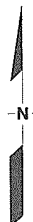
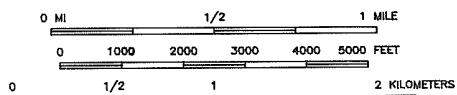
Enjoy Your Hike!



Legend

- P Parking
- A Campground
- 74 Picnic Area
- 2.7 Mileage between Points
- Unimproved Road
- Secondary Highway
- Improved Light Duty
- Forest Road
- Forest Trail
- 309 State Highway
- 187 County Road
- 4216 Forest Road
- 281 Forest Trail

Scale 1:24 000



Contour Interval 20 Feet