



**2006 Threshold  
Evaluation Report**



**Issued by the  
Tahoe Regional Planning Agency**

**Sept 2007**



# *Environmental Threshold Carrying Capacities or Thresholds*

- Environmental standards necessary to maintain a significant scenic, recreational, educational, scientific or natural value of the region or to maintain public health and safety within the region (TRPA Compact).

# What is the Threshold Evaluation?

- TRPA Resolution No. 82-11
  - Numerical Standards
    - Numerical expression of environmental condition necessary to maintain a significant value of the region.
  - Management Standards
    - Regulatory strategies that ensure significant values are protected.
  - Policy Statements
    - Provided TRPA staff with planning guidance for current Regional Plan content.
  - Established 5 year review schedule

# What is the Threshold Evaluation?

- TRPA Code of Ordinance - Chapter 32
  - Provides guidance for Threshold Evaluation report content
    - Definitions/Reporting elements
    - How and when thresholds will be attained/maintained
    - Procedures for determining status of indicators relative to standards
    - Compliance measures
- Threshold Reports
  - 1991
  - 1996
  - 2001
  - 2006

# What is Different about the 2006 Threshold Evaluation

- Contains Broad Recommended Changes for Threshold Standards/Indicators and Desired Conditions
  - Four Years of the Pathway Collaborative Process:
    - Surveys
    - Workshops
    - Forum Meetings
    - Science and Research

# Recommendations for 2008 Update

## Adopt Desired Conditions for Threshold Categories

- Water Quality – Adopt California standard
- Soils – Adopt 2006 soil survey
- Vegetation – Adopt USFS sensitive plant list – survey and protect
- Public Safety – Fuels reduction standard in Wildland Urban Interface
- Fish and Wildlife - goshawk disturbance zones, Adopt new littoral fish habitat map
- Air Quality – Adopt California standards
- Noise – Adopt California standards

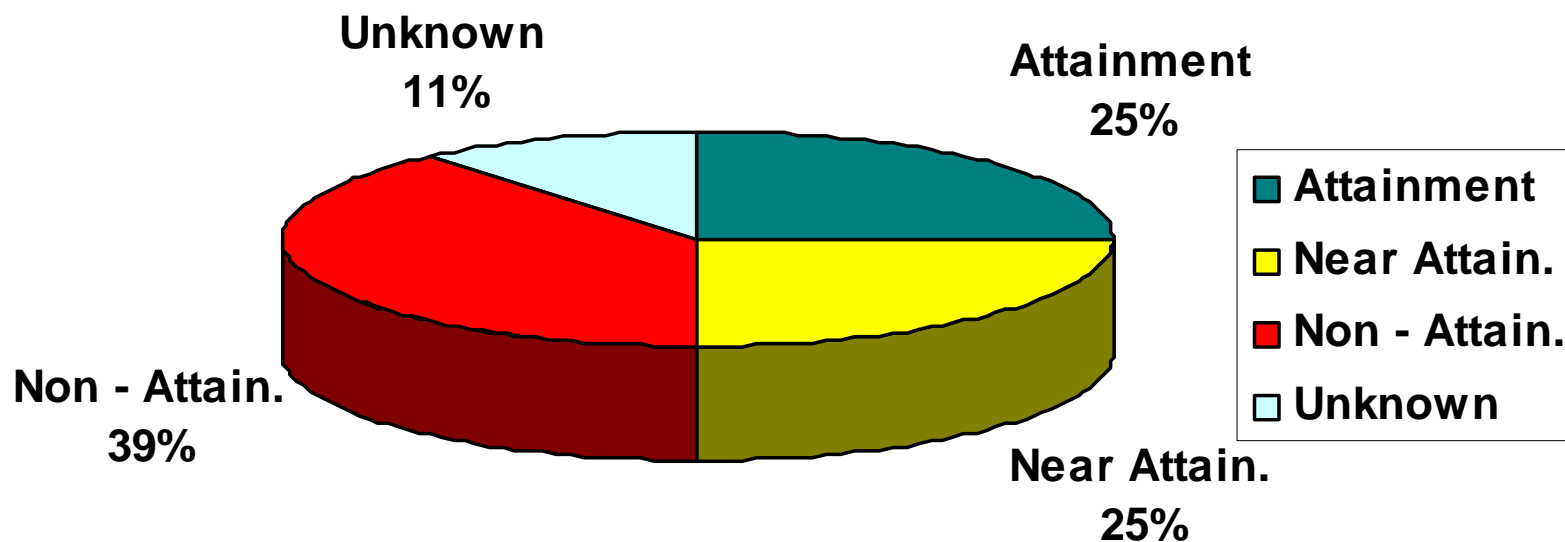
# Overview of 2006 Evaluation Report

## Threshold Indicator Status

- Vegetation
- Recreation
- Water Quality
- Soils  
Conservation
- Wildlife
- Fisheries
- Scenic  
Resources
- Air Quality
- Noise

Tracked by 36 Indicators

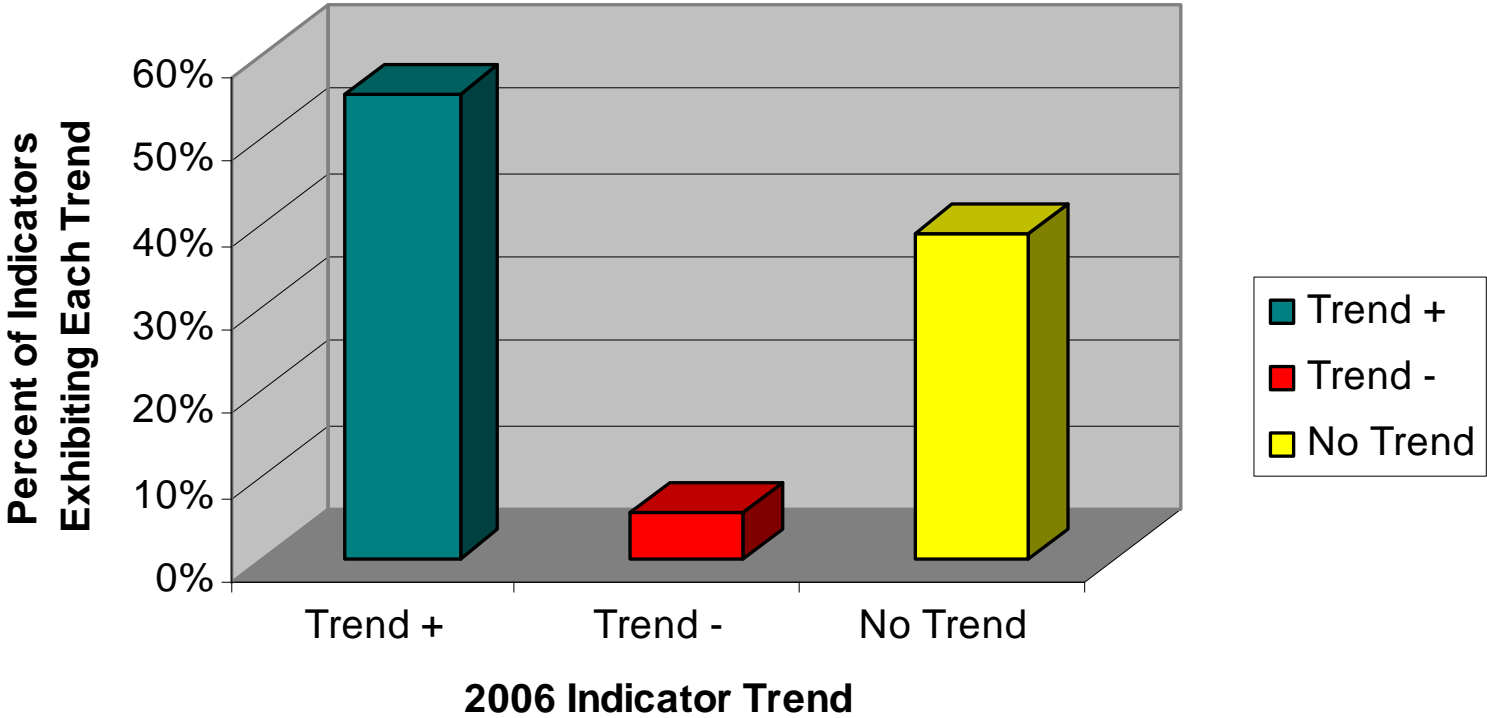
# 2006 Threshold Attainment Status



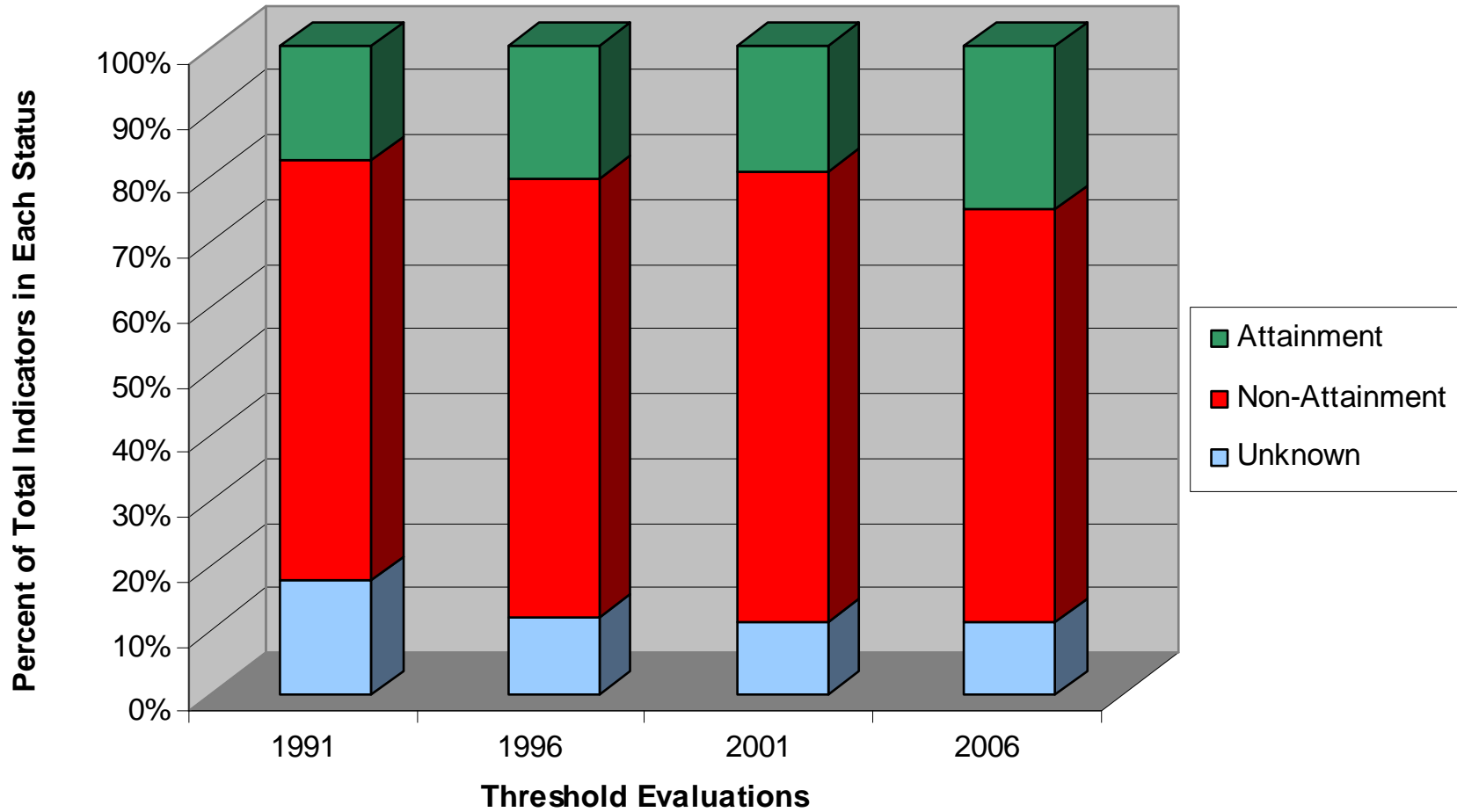
2006 Indicator Status



# 2006 Indicator Trends



# Attainment Across Threshold Evaluations



# Specific Threshold Category Examples

- Page 6 of the Executive Summary
  - Details of Attainment v. Non-Attainment and Trend
    - By Indicator within Threshold Category
    - Across Evaluations
- Updated EIP Subprograms Address Multiple Threshold Categories and Standards

# Where We Are Today:

- 25% of Threshold Standards in Attainment
- 25% near Attainment
- Progress Between 1991-2006
  - % Attainment Increased
  - % Unknown Decreased
- Recommend adoption of Lake Tahoe Management System Manual to guide program management
- Recommended updates to Threshold Standards/Indicators
  - Some require additional development
- Look to updated EIP Sub-Programs as guide to allocation of resources

Questions?