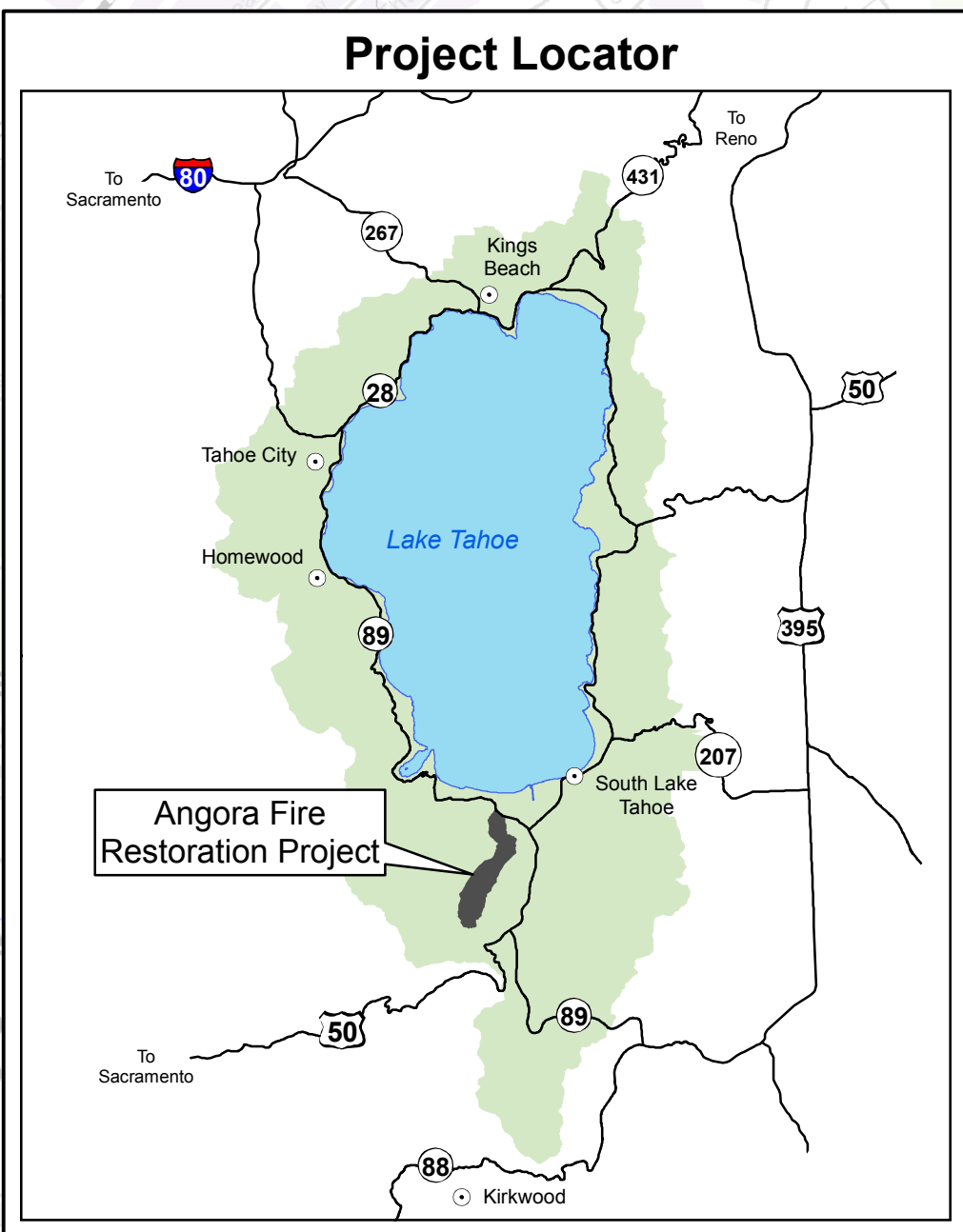
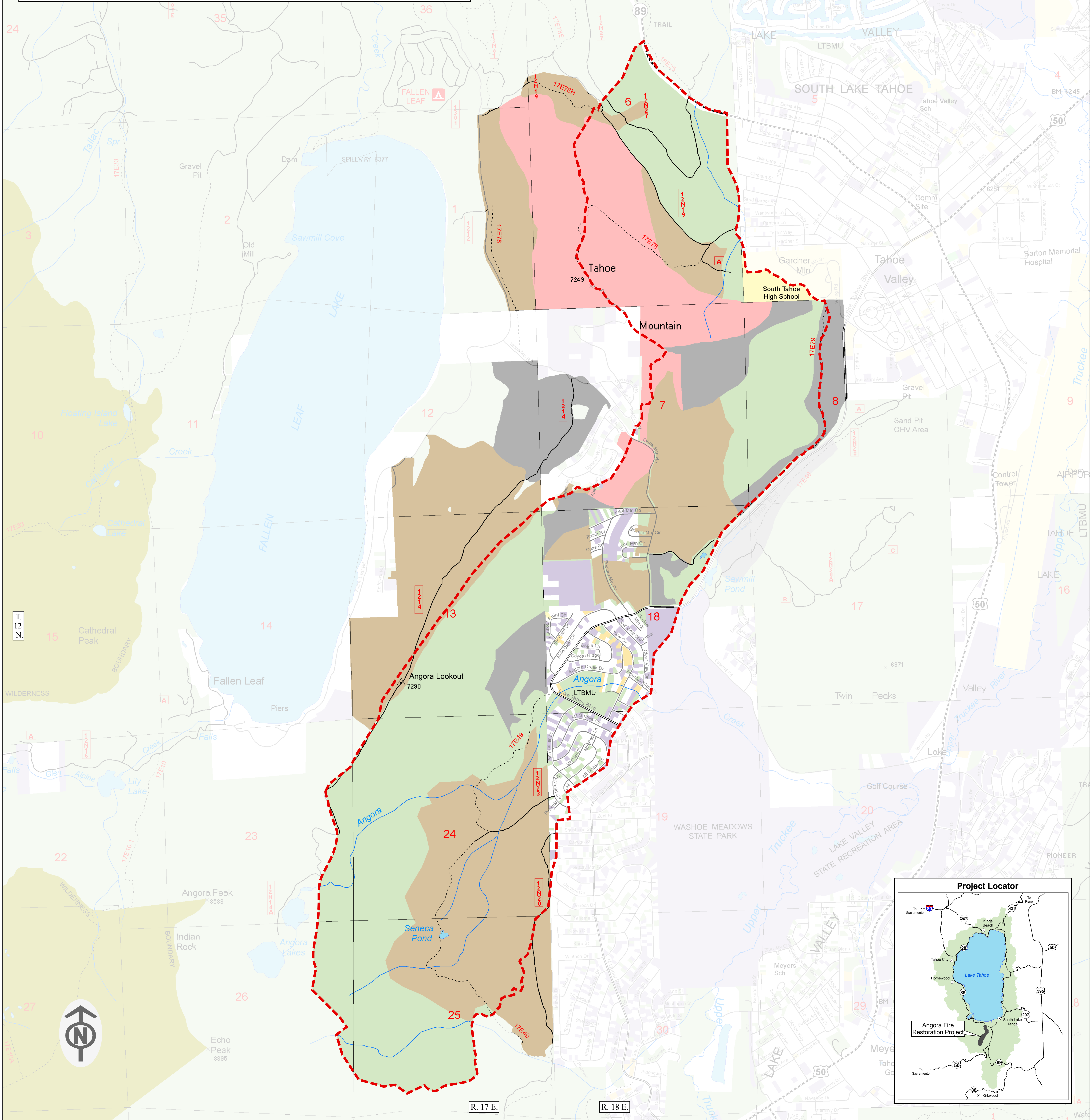


# Pre-Fire Treatments (1996-2006)

## Lake Tahoe Basin Management Unit

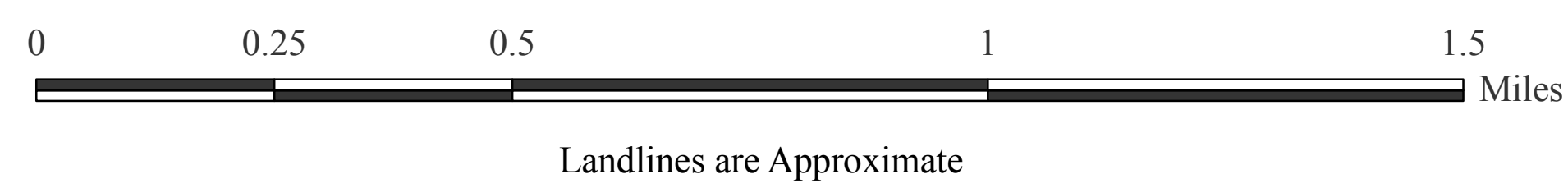


- Angora Fire Restoration Project Area
- Pre-Fire Treatment**
- Precommercial Thin - Hand
- Commercial Thin - Mechanical
- Commercial Thin - Helicopter

- Land Status**
- National Forest - LTBMU
- National Forest Wilderness
- State
- County
- Other Governmental Entity
- Private

- Transportation System**
- Highway
- Arterial Local
- National Forest System Road
- Local Road
- National Forest System Trail

- Stream
- Waterbody



The Forest Service uses the most current and complete data available. GIS data and product accuracy may vary. They may be developed from sources of differing accuracy; accurate only at certain scales; based on modeling or interpretation; incomplete while being created or revised; etc. Using GIS products for purposes other than those for which they were created, may yield inaccurate or misleading results. The Forest Service reserves the right to correct, update, modify or replace GIS products without notification.



For more information, contact: Lake Tahoe Basin Management Unit  
35 College Drive, South Lake Tahoe, CA 96150  
(530) 543-2600 (530) 541-4036 TTY