



File Code: 1950

Date: September 8, 2003

Welcome to the Fall 2003 edition of the quarterly Schedule of Proposed Actions (SOPA) for the Kootenai National Forest. Four times a year, this SOPA is updated, published and made available on our website (www.fs.fed.us/r1/kootenai).

We invite your active participation in project planning. Contributing your comments, suggestions, and site-specific information about these projects early in the planning process can help our Forest make better decisions.

Here is how the SOPA can be best used:

1. Look through the list of projects and decide what projects you would like to know more about.
2. Call the contact person and let them know you would like to be on the mailing list for the given project. The phone number for that person is on the SOPA.
3. Once you are placed on a project mailing list, you will then be notified about opportunities for public participation and you will receive information concerning that project as it is developed.

We will continue to provide this SOPA to you unless you ask us to remove your name from our mailing list. If you would like to save paper and postage, we will be happy to send you an e-mail when the new SOPA is available on our website.

If you have comments or suggestions on making this SOPA more useful, would like to receive the SOPA electronically, or have any questions, contact Kirsten Kaiser, Forest Environmental Coordinator, at 406-293-6211 or kkaiser@fs.fed.us.

Sincerely,

BOB CASTANEDA
Forest Supervisor

Enclosure

INFORMATION ABOUT THE QUARTERLY SCHEDULE OF PROPOSED ACTIONS (SOPA)

The enclosed SOPA provides information about projects for which we have a specific proposal and are in the process of analyzing, as directed by the National Environmental Policy Act (NEPA).

Projects on the SOPA are arranged in a table format and are sorted by Ranger District, by type of project, and by date expected for each decision for each project. There are several points in the planning process during which you can be the most helpful and influential, but exact steps and timing may vary depending on the type and complexity of the project. For example, the whole planning process may only take a few days for small, non-complex projects, or several years for large complex projects such as a major mining proposal. The enclosure labeled "Project Planning Process and Where You Fit In" describes these steps and identifies what you can do to be involved.

DEFINITIONS USED FOR THE SOPA

If you've received previous editions of this list you'll notice that some projects don't appear anymore. That's because we've finished the analysis, made the decision, and the appeal period (if applicable) has ended. In other cases, we've removed the projects from the list because we're unable to pursue them for various reasons (lack of funding, conflicts with other forest priorities, etc.). Please contact the person listed as the "contact" for a project anytime you have a question or would like to be included on the mailing list for the given project.

This list is not inclusive. Some projects may come up after publication that requires our immediate attention, and we may complete the decision document before the next edition.

At the top of each table we have listed the Ranger District, their address, and the "Newspaper of Record" (used by the District for legal notices of decision, and scoping of projects).

The following items describe the column headings and contents in the tables that follow.

MAP KEY: Identifies a number that goes with the attached small forest map to show the general location of the project.

TYPE OF PROJECT: Identifies the Resource Program area that's affected. Acronyms used include:

Mgmt – management

Exchg – Exchange

NAME OF PROJECT: Identifies the name of the environmental document. Acronyms used are:

EIS - Environmental Impact Statement

EA – Environmental Assessment

BPA – Bonneville Power Administration

OSR – Overstory Removal

ORV – Off Road Vehicle

Salv – Salvage

MMBF – Million board feet

LE – Land Exchange

MBF – Thousand board feet

CCF - Hundred cubic feet

RUP - Road Use Permit

ROW – Right of Way

ORD- Open Road Density

LOCATION & PROJECT DESCRIPTION: Identifies both legal land description and the drainage or other identifying on-the-ground feature. If a project is located within an inventoried roadless area it is also noted here. Also included is a general description of the project, such as estimated timber volume, acres proposed for treatment, acres involved with a land exchange, etc.

Acronyms used are: T – Township

R – Range

S – Section

NEPA STATUS: Identifies where we are in the NEPA process. Acronyms used are:

NOI- Notice of Intent published in the Federal Register

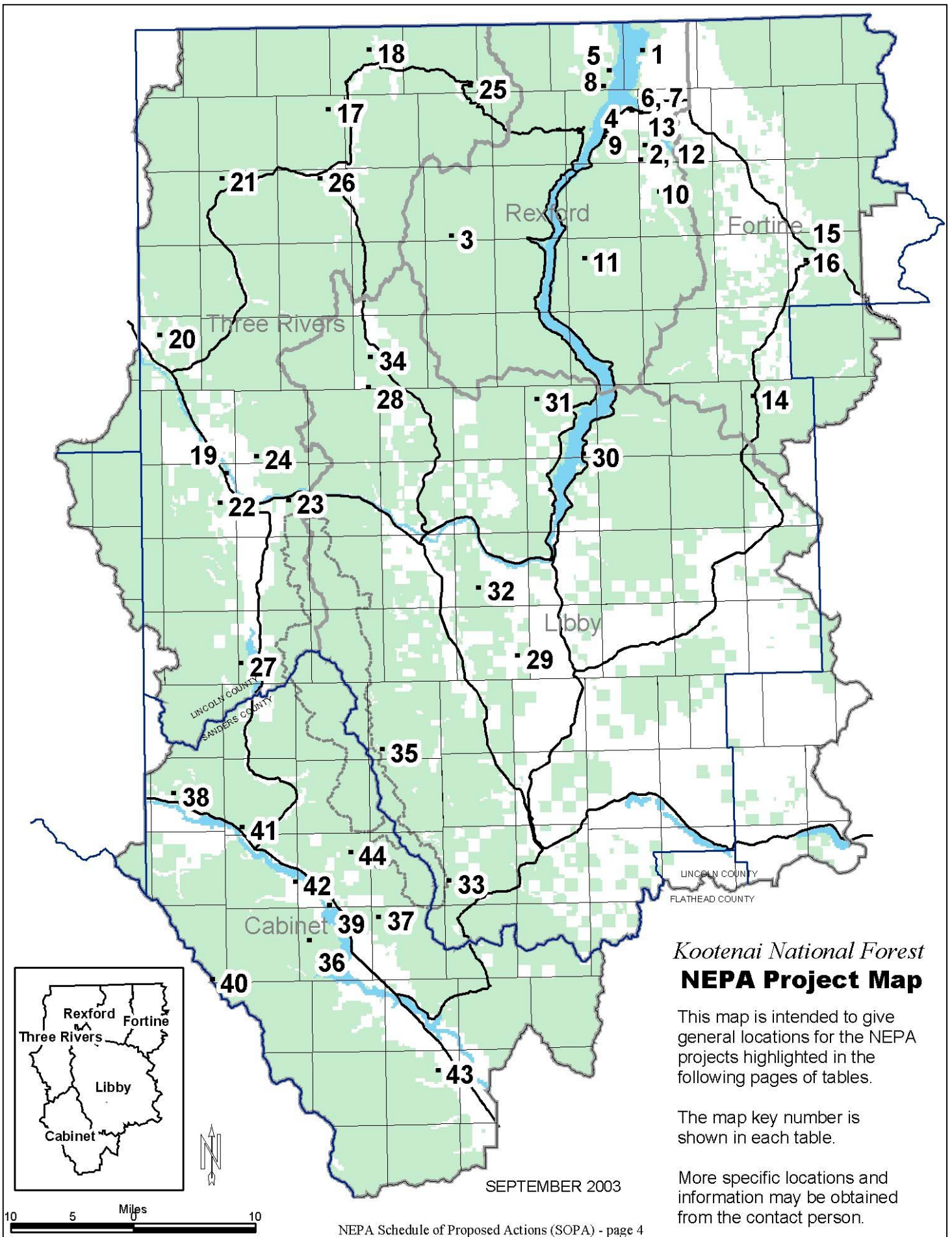
ANTICIPATED DECISION DATE: This is the best estimate of when the NEPA analysis will be completed. Sometimes we're not able to meet the date for various reasons but the schedule will be validated and updated each time we send it out.

YEAR ACTIVITY TO START ON THE GROUND: This is the best estimate of when ground disturbing activities would occur and/or contracts or permits would be offered.

CONTACT PERSON: This is the person at the Ranger District or Forest to contact for further information regarding the project.

THE PROJECT PLANNING PROCESS & WHERE YOU MIGHT FIT

ANALYSIS STEP	PARTICIPATION OPTIONS
Identify need for project – Forest Service, business, organization, or individual suggests a project	Bring need for a project to the attention of Forest Service
Develop detailed project proposal (Forest Service or other project proponent)	Develop project proposal
Scoping – solicit public comment on the proposal (how it might affect forest resources & uses; how the project could be done better). This defines the scope of environmental analysis needed and the range of alternatives that should be considered	Comment on proposal – suggest issues, concerns, alternatives or mitigation measures
Develop range of alternatives based on the issues raised during scoping. One alternative is to stay with the status quo (No Action)	Suggest variations to the original proposal
Initiate public comment process (scoping), which includes a 45-day comment period for Draft EIS's and 30-day comment period for most other projects. A copy of the environmental document will be mailed to those who requested a copy and to those who have participated in the environmental analysis process. A legal notice, requesting comments on appealable projects, will be published in the <i>Daily Inter Lake</i> , Kalispell, MT, which is our newspaper of record (36 CFR 215.5)	Provide comments on the environmental analysis. See 36 CFR 215.6 for description of information to provide
Notice of appealable decisions will be published in the newspaper of record. Copies of the decision document will be sent to those who submitted comments on the proposed action either before or during the comment period identified above (36 CFR 215.9)	Review decision: exercise option to appeal, when applicable, through administrative process
Appeal period will be open for 45 days following legal notice of decision in the newspaper except if no one expressed interest and there is no change from the proposed action. (36 CFR 215.10)	File Notice of Appeal (see section 36 CFR 215.14 for contents of an appeal) Only those who commented through the process described above or expressed interest will be able to appeal. (36 CFR 215.11). NOTE: Persons interested in or potentially affected by an appeal may participate as an interested party (36 CFR 215.11 (2)(b)). Interested parties must submit written comments to the appeal reviewing officer within 15 days after close of the appeal filing period (36 CFR 215.13(e). The informal disposition meeting is open to the public and interested parties (36 CFR 215.16(c)).
Implement the project	Contribute labor, equipment or funding
Monitor & evaluate project results	Provide feedback on the project



Kootenai National Forest
NEPA Project Map

This map is intended to give general locations for the NEPA projects highlighted in the following pages of tables.

The map key number is shown in each table.

More specific locations and information may be obtained from the contact person.

MAP KEY	TYPE OF PROJECT	NAME OF PROJECT	LOCATION & PROJECT DESCRIPTION	NEPA STATUS	ANTICIPATED DECISION DATE	YEAR ACTIVITY TO START ON GROUND	CONTACT PERSON
1	Fuels, Timber Sales	Koocanusa East Shore Hazardous Fuel Reduction	T37N, R27W, Sections 19, 20, 29, 30-32; T36N, R28W, Sections 1, 2, 11, 14, 15, 21, 22, and 28; T36N, R27W, Sections 6-8. Fourteen miles west of Eureka. Approximately 1,425 acres of timber harvest and prescribed burning (596 acres of commercial thinning and prescribed burning, 387 acres of precommercial thinning and prescribed burning, and 442 acres of prescribed burning only). Proposed categorical exclusion, category 10.	Analyzing Effects	September 2003	2003	Megan Strom 296-7195
2	Timber Sales, Fuels	Eureka Green Boxes Limited Timber Harvest	T36N, R27W, Section 30. Four miles SW of Eureka. Approximately 70 acres of timber harvest (commercial thinning) and prescribed burning (underburning and excavator piling/burning) to reduce hazardous fuels in the urban interface. Proposed categorical exclusion, category 10.	Seeking Public Comment	September 2003	2003	Phil Emery 296-7125
3	Timber Sales, Fuels, Silviculture, Watershed Restoration	Lower Big Creek	T33-36N, R29-31W. Big Creek drainage including North Fork and South Fork of Big Creek. Approximately 3,625 acres of timber harvest and prescribed burning; 1,100 acres of underburning without harvest; road decommissioning, storage, and reconstruction; project-specific Forest Plan amendments; harvest openings greater than 40 acres.	Analyzing Effects	December 2003	2004	Chris Fox 296-7155
4	Special Use	Town of Rexford Waterline and Sewage Lagoon Permit	T36N, R28W, Section 22. Rexford townsite area. Renewal of existing permit for a water transmission line and sewage lagoon on approximately 8 acres. Includes the upgrade of a 400 foot water pipe.	Analyzing Effects	September 2003	2003	Eric Heyn 296-2536
5a	Special Use	Marvel Special Use Road Permit	T37N, R28W, Section 35. Renewal of a permit to use and maintain 1,056 feet of road access across federal lands to access private lands.	Analyzing Effects	September 2003	2003	Eric Heyn 296-2536
5b	Special Use	Marvel Special Use Irrigation Ditch Permit	T37N, R28W, Section 35. Renewal of a permit to use and maintain approximately 0.5 miles of irrigation ditch, a sump box at the diversion point, and up to 200' of 6" irrigation pipe on federal lands.	Analyzing Effects	September 2003	2003	Eric Heyn 296-2536
6	Special Use	MT. State Highway Department Storage and Maintenance Site and Road Access Special Use Permit	T36N, R28W, Section 12. Renewal of a permit to use a storage yard containing a sand storage shed, maintenance garage and storage garage, and 900' of existing access road on 5.01 acres of federal land.	Analyzing Effects	September 2003	2003	Eric Heyn 296-2536
7	Special Use	Hoover Special Use Road Permit	T36N, R28, Section 12. Rexford area. Renewal of existing road access. Access is 150 feet in length.	Analyzing Effects	September 2003	2003	Eric Heyn 296-2536
8	Special Use	Woodard Special Use Road Users Association Permit	T37N, R28W Section 26. West Kootenai area. Application submitted by a Road Users Association, requesting access over an existing non-system road on FS lands. Road is approximately 30 feet in length.	Analyzing Effects	October 2003	2003	Eric Heyn 296-2536

MAP KEY	TYPE OF PROJECT	NAME OF PROJECT	LOCATION & PROJECT DESCRIPTION	NEPA STATUS	ANTICIPATED DECISION DATE	YEAR ACTIVITY TO START ON GROUND	CONTACT PERSON
9	Special Use	Green Special Use Water Transmission Line	T36N, R28W, Section 22. Rexford area. Renewal of existing water transmission line, 200 feet in length.	Analyzing Effects	December 2003	2003	Eric Heyn 296-2536
10	Special Use	Johnson Special Use Road Permit	T35N, R27W. Request submitted for access on Forest Service Road # 7912. Road is approximately 3.5 miles.	Analyzing Effects	December 2003	2004	Eric Heyn 296-2536
*	Special Use	Interbel Telephone Company	Renewal of existing permits for buried telephone lines on the Rexford and Fortine Ranger Districts.	Analyzing Effects	December 2003	2003	Eric Heyn 296-2536
11	Recreation	Lower Inch McGuire Hiking Trail	T34N, R28W, Sections 6, 8, 16, 21. Inch Mtn-Flat Creek area. Work on this non-motorized trail includes reestablishment of trail tread width, placement of erosion control barriers and trail alignment for approximately 6 miles.	Analyzing Effects	September 2003	2003	Eric Heyn 296-2536
12	Recreation	Pinkham Falls Hiking Trail	T36N, R27W, Section 31. Pinkham Creek area. Establishing non-motorized trail over former logging skid trails and placement of a new trail segment for approximately 900 feet.	Analyzing Effects	September 2003	2003	Eric Heyn 296-2536
13	Recreation	Rails to Trails Hiking Trail	T36N, R27W, Sections 7. Tobacco Bay Area. Establishment of a non-motorized hiking trail for approximately 1/8 mile.	Analyzing Effects	September 2003	2003	Eric Heyn 296-2536

FORTINE RANGER DISTRICT, PO Box 116, Eureka, MT 59917 - Phone: 406-296-2536, Fax: 406-296-7188
DISTRICT NEPA COORDINATOR: JOLEEN DUNHAM

NEWSPAPER OF RECORD: DAILY INTER LAKE, Kalispell, MT

MAP KEY	TYPE OF PROJECT	NAME OF PROJECT	LOCATION & PROJECT DESCRIPTION	NEPA STATUS	ANTICIPATED DECISION DATE	YEAR ACTIVITY TO START ON GROUND	CONTACT PERSON
14	Timber Sale, Fuels, Watershed Restoration	Fortine	T33N, R26W, Sections 21-22, 27-29, 31-35; T32; T32N, R28W; Sections 3-11, 14-36; T32N, R27W; Sections 1-2, 11-14, 23-26; T31N, R26W; Sections 3-5, 8-10, 15, and 16; Fortine Watershed. Project includes timber harvest, prescribed burning, watershed restoration, and road decommissioning. Some openings greater than 40 acres.	Analyzing Effects	December 2003	2004	Joleen Dunham 882-8325
15	Timber Sale	Dickey Fire Salvage	T34N, R25W, Sections 14, 15, and 23. Project would salvage approximately 25 acres of recently burned timber resulting from wildfire. Proposed categorical exclusion, category 13.	Seeking Public Comment	December 2003	2004	Kenny Kindel 882-8331
16	Timber Sale, Fuels	Murphy Swayback	T34N, R25W, Section 17. Project would commercial thin approximately 68 acres of low elevation Douglas-fir/western larch. Proposed categorical exclusion, category 12.	Seeking Public Comment	December 2003	2004	Kenny Kindel 882-8331

MAP KEY	TYPE OF PROJECT	NAME OF PROJECT	LOCATION	NEPA STATUS	ANTICIPATED DECISION DATE	YEAR ACTIVITY TO START ON GROUND	CONTACT PERSON
17	Timber Sales, Fuels, Silviculture	Garver	Portions of T36N, R32W; T36N, R31W; T37N, R32W; and T37N, R31W; within the West Fork Yaak, Pete Creek, and Yaak Face drainages. Includes prescribed burning in the West Fork Yaak Inventoried Roadless Area, changes to old growth designations.	Notice of Decision 6/20/03	Completed	2003	Kathy Mohar 295-7426
18	Timber Sale	North Fork Yaak	Portions of Sections 10 and 15, T37N, R31W, in the North Fork Yaak River drainage. Proposed as categorical exclusion, (Category 12).	Decision Pending	September 2003	2003	Ed Koberstein 295-7456
19	Timber Sale	Crossroads	Portion of Section 1, T31N, R34W, in the Kootenai River drainage near Troy, Montana. Proposed as Categorical Exclusion (Category 12).	Analyzing Effects	September 2003	2003	Ed Koberstein 295-7456
20	Fuels Reduction	Lime Cr. Fuels Reduction	Portion of Section 9, T33N, R34W, off Lime Cr. Rd.	Deferred			Miles Friend 295-7479
21	Silviculture	Timber Stand Improvement 2003/2004	West Fork Yaak, T37N, R32W (17 acres); Hensley Hill, T36N, R32W (76 acres); Gus Creek, T35N, R33W (50 acres); Cool Creek, T35N, R32W (25 acres); Cougar Ridge, T33N, R34W (31 acres); South Side Road T61N, R3E (9 acres) and Keeler Creek, T30N, R33/34W (86 acres). Tree thinning and pruning.	Analyzing Effects	October 2003	2003	Joe Hessenkemp 295-7449
22	Recreation	Callahan Interpretative Trail Extension	Portion of Sections 13, 23, T31N, R34W from existing trail into the town of Troy, MT. Trail would be extended on the historic railroad grade across FS and Plum Cr. lands and tie into the Callahan Cr. Rd. (427) ROW.	Decision Memo signed 7/30/03	Completed	2003	Mark Mason 295-7480
23	Recreation	Old Highway 2 Interpretative Trail Relocation - Hwy 56 Portal	Portions of Sections 13, 14, and 22, T31N, R33W. Re-route existing trail away from shooting area (Plum Cr. lands) and improve tread corridor (FS lands).	Dropped			Mark Mason 295-7480
24	Watershed Restoration, Fisheries	O'Brien Creek Stream Restoration	Portion of Section 32, T32N, R33W. Stream stabilization to improve stream conditions and aquatic habitat.	Seeking Public Comment	December 2003	2004	Josh Boyd 295-7415
25	Watershed Restoration	Dodge Summit	Portion of Sec. 36, T37N, R30W on old Dodge Summit Road. Watershed improvement work. Yaak Headwaters Group Partnership.	Seeking Public Comment	December 2003	2004	Josh Boyd 295-7415
26	Special Use	Cool Creek Access Easement	T35N, R32W, Sections 2, 3, 4. Across the Yaak River from Yaak, MT. Access request (less than 1 mile) for use of FS road on FS lands.	Analyzing effects	January 2004	2004	Dick Harlow 295-7432
27	Road Use	Stanley Creek Road Access	Request for a RUP to haul 200 MBF of timber on FS. Rd. 4626 within portions of Sections 35 and 36, T29N, R34W and portions of Section 6, T29N, R34W.	Analyzing effects	January 2004	2004	Dick Harlow 295-7432

MAP KEY	TYPE OF PROJECT	NAME OF PROJECT	LOCATION & PROJECT DESCRIPTION	NEPA STATUS	ANTICIPATED DECISION DATE	YEAR ACTIVITY TO START ON GROUND	CONTACT PERSON
28	Timber Sale, Fuels, Watershed Restoration	Pipestone	T34N, R32W, Section 36; T34N, R31W, Sections 11,14,15,21-36; T34N, R30W, Section1; T33N, R32W, Sections 1,12,23-5,36; T33N, R31W, Sections 1-36; T33N, R30W, Sections 18-20,29-33; T32N, R32W, Sections 1,12-13,24,25,36; T32N,R31W,Sections 1-36; T32N, R30W, Sections 5-10,15-21,29-32; T31N, R31W, Sections 1-22,29,30; T31N, R30W, Sections 4-9,17,18. Pipe Creek area. Includes Forest Plan ORD, VQO, movement corridors, and hiding cover amendments, openings greater than 40 acres, prescribed burning in the Gold Hill West Inventoried Roadless Area, 99 miles of road decommissioning, .47 miles of road construction on FS lands by Plum Creek, 2 miles of snowmachine trail construction, .24 miles of temporary road construction, 2.18 miles of road reconstruction, .68 miles of permanent road construction, and 4374 acres of prescribed burning.	Decision pending	September 2003	2004	Leslie Ferguson 283-7568
29	Timber Sale	South McSwede	T29N,R30W, Sections 28,29,32-34; T28N,R30W, Sections 1,2,9-15,22-27,33-36; T28N, R29W, Sections 7,8,18; T27N, R30W, Sections 4,5,9. Includes 709 acres of commercial timber harvest, 456 acres of natural fuel reduction, 550 acres of precommercial thinning, 3 miles of temporary road construction, private land access, 5 miles of road decommissioning , 26 miles of road storage, 47 miles of road repair and BMP implementation, and 5 miles of trail construction.	Decision pending	September 2003	2004	Leslie Ferguson 283-7568
30	Timber Sale	Reservoir East	T31N, R29W, Sections 2 and 22. 70 acres of improvement harvests; Canyon Creek dispersed recreation site (50 acres) and 20 acres near the Koocanusa Marina camping site. Proposed categorical exclusion, category 12.	Scoping complete, Analyzing Effects	September 2003	2003	Denise Beck 283-7504
31	Timber Sale, Fuels	Bristow	T33N, R30W, Sections 35, 36; T33N, R29W, Sections 31, 32, 36; T33N, R28W, Sections 31; T32N, R30W, Sections 1, 2, 3, 11, 12, 21- 28; T32N, R29W, Sections 1-12, 14-17, 20-23, 27-28, 32-34; T31N, R30W, Section 11 and T31N, R29W, Sections 3-4, and 9, Jackson, Barron and Bristow Creeks. Includes 2315 acres of timber harvest, 1171 acres of fuel treatment, 1167 acres of precommercial thinning, 6 miles of temporary road construction, 3 miles of road decommissioning, Forest Plan ORD amendment and openings greater than 40 acres.	Developing Alternatives	April 2004	2004	Denise Beck 283-7504
32	Fuels	North McSwede Interface	T30N, R30W, Sections 19, 30, 31 and T29N, R30W Sections 6, 7, 18, Swede Mtn. & Williams Gulch area. Includes 1000 acres of fuel reduction in the urban interface and prescribed burning adjacent to the Libby airport (all sides) to reduce the encroachment of trees moving into the flight path.	Seeking Public Comment	March 2004	2004	Nikia Hernandez 283-7564

MAP KEY	TYPE OF PROJECT	NAME OF PROJECT	LOCATION & PROJECT DESCRIPTION	NEPA STATUS	ANTICIPATED DECISION DATE	YEAR ACTIVITY TO START ON GROUND	CONTACT PERSON
33	Special Uses	Bear Lakes Access Request	T26N, R30W, Section 30. Silver Butte area. Livestock use of existing trail and 500 feet of associated trail construction accessible to livestock. Trail accesses private lands.	Analyzing Effects	May 2004	2004	Denise Beck 283-7504
34	Special Uses	Turner Mtn. Ski Area Improvements	T33N, R31W, Section 20, Turner Mtn. Ski area. Improvements may include septic installation and access road construction.	Seeking Public Comment	June 2004	2004	Leslie Ferguson 283-7568
35	Lands	Silver Cable	T28N, R31W, Sections 29, 30, 31, 32. FS proposes to purchase 96 acres of private property located in Cable Creek drainage.	Seeking Public Comment	October 2003	2004	Malcolm Edwards 293 - 7773

CABINET RANGER DISTRICT, 2693 Highway 200, Trout Creek, MT 59874 - Phone: 406-827-3533, Fax: 406-827-3203
DISTRICT NEPA COORDINATOR: JOHN HEAD

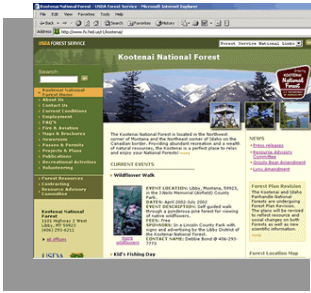
NEWSPAPER OF RECORD: DAILY INTER LAKE, Kalispell, MT

MAP KEY	TYPE OF PROJECT	NAME OF PROJECT	LOCATION & PROJECT DESCRIPTION	NEPA STATUS	ANTICIPATED DECISION DATE	YEAR ACTIVITY TO START ON GROUND	CONTACT PERSON
36	Timber Sale, Fuels	Minton Pass Fir Thinning	T24N, R32W; Sections 19 & 20. Near Minton Peak, 7 miles west of Trout Creek, MT. Proposed categorical exclusion, category 12.	Seeking Public Comment	October 2003	2003	John Gubel 827-0732
37	Fuels, Timber Sale	Green Mountain Fuel Reduction	T25N, R32W, Sections 1, 2, 11, 12. Green Mountain area. Fuels reduction adjacent to private property with some timber harvest; 645 acres of commercial thinning and 800 acres of natural fuel burning.	Analyzing Effects	November 2003	2003	Kurt Werst 827-0712
38	Timber Sale, Fuels	Fat Blue Eddy	T27N, R34W, Section 7-10, 15-18, 21-23, 24, 25; PMM. Blue Creek and Big Eddy Creek drainages near Heron, MT. Fuel reduction in areas adjacent to private property, some timber harvest, pre-commercial thinning.	Developing Proposal	June 2004	2004	John Head 827-0738
39	Special Uses	Blackfoot Communication Fiber Optic	T26N; R32W; S33; PMM; Sanders County. Installation of a 450 ft. fiber optic cable within a cleared ROW, near the Noxon Dam access road. No tree clearing etc. would be required.	Decision Signed 6/30/03		2003	Bruce Haflich 827-0730
40	Special Uses	Eighty Peak Repeater	T25N; R34W; S26; PMM Sanders County, on the summit of Eighty Peak, approx. 16 miles west of Trout Creek, Montana. Proposed installation of a radio system repeater on a site previously used for a lookout and, in later years, a radar installation. Include installation of a small building to house equipment, and installation of a propane tank to supply power.	Decision Signed 7/23/03		2003	Kurt Werst 827-0712
41	Special Uses	Boar's Breath Small Tract Act	T27N, R33W; Section 32. 1.5 miles NW of Hwy 200 & 56 junction. Proposal is to sell approx. 1.3 acres of isolated exemption strip land to adjacent landowners under Small Tract Act authority.	Developing Proposal	September 2003	2003	Bruce Haflich 827-0730
42	Land Conveyance	Noxon Admin Site Conveyance	T26N, R33W, Section 24. Adjacent to Noxon, MT townsite. National pilot authority to convey surplus government properties. Conveyance of the old Noxon ranger district station	Analyzing Effects	October 2003	2005	Bruce Haflich 827-0730

MAP KEY	TYPE OF PROJECT	NAME OF PROJECT	LOCATION & PROJECT DESCRIPTION	NEPA STATUS	ANTICIPATED DECISION DATE	YEAR ACTIVITY TO START ON GROUND	CONTACT PERSON
			property and associated improvements (i.e. structures) to private ownership. 110 acres.				
43	Land Exchange	Cox Land Exchange	T22N, R30W, Section 5 (NFS); T23N, R31W, Section 11; (Private).	Analyzing Effects	November 2003	2003	Bruce Haflich 827-0730

KOOTENAI SUPERVISORS OFFICE, 1101 US Hwy 2 West, Libby, MT 59923 - Phone: 406-293-6211, Fax: 406-293-6418 **NEWSPAPER OF RECORD:** *DAILY INTER LAKE, Kalispell, MT*

MAP KEY	TYPE OF PROJECT	NAME OF PROJECT	LOCATION & PROJECT DESCRIPTION	NEPA STATUS	ANTICIPATED DECISION DATE	YEAR ACTIVITY TO START ON GROUND	CONTACT PERSON
44	Minerals	Rock Creek (Sterling Mine)	T26N, R32W. Includes Forest Plan amendments. Copper/silver mine near Noxon, MT.	Notice of Decision 6/27/03		2003	John McKay 283-7691
*	Forest Plan Amendment	Forest Plan Amendments for Motorized Access Management within the Selkirk/Cabinet-Yaak Grizzly Bear Recovery Zones	Portions of the Lolo, Idaho Panhandle and Kootenai National Forests. Motorized access management.	Decision Pending	October 2003	2003	Kirsten Kaiser 283-7659
*	Forest Plan Amendment	Northern Rockies Lynx Amendment	18 National Forests in Regions 1, 2 and 4. Lynx management.	DEIS Expected Fall 2003	2004	2004	John Haber 329-3399
*	Forest Plan Revision	Kootenai and Idaho Panhandle National Forests Forest Plan Revision	Forest-wide. Revision of Forest Plan management direction.	Scoping Complete 5/30/03	2005	2005	Joe Krueger 283-7774



Go to www.fs.fed.us/r1/kootenai/ for the current and past issues of the Quarterly Schedule of Proposed Actions(SOPA) and for information on recreational opportunities, current events, publications, contracting, fire, forest resources, press releases and lots more.

Check back regularly, as we continue to expand opportunities for public involvement on our website!

The U.S. Department of Agriculture (USDA) prohibits discrimination in its programs on the basis of race, color, national origin, sex, religion, age, disability, political beliefs, sexual orientation, or marital or family status. (Not all prohibited bases apply to all programs.) Persons with disabilities who require alternative means for communication of program information (Braille, large print, audiotape, etc.) should contact USDA's TARGET Center at 202-720-2600 (voice and TDD). To file a complaint of discrimination, write USDA, Director, Office of Civil Rights, Room 326-W, Whitten Building, 1400 Independence Avenue SW, Washington, DC 20250-9410, or call 202-720- 5964 (voice or TDD). USDA Forest Service is an equal opportunity provider and employer.



KOOTENAI NATIONAL FOREST
1101 U.S. Highway 2 West
Libby MT 59923