



United States
Department of
Agriculture

Forest
Service

Kootenai National Forest
406 293-6211

Forest Supervisor's Office
1101 US Highway 2 West
Libby MT 59923

File Code: 1950

Date: September 10, 2001

The Kootenai National Forest is involved in many programs and activities. Enclosed you will find information about projects for which we have a specific proposal, and are in the process of analyzing as directed by the National Environmental Policy Act (NEPA).

The projects are arranged in a table format and are sorted by Ranger District, by type of project, and by date expected for each decision for each project. There are several points in the planning process during which you can be the most helpful and influential, but exact steps and timing may vary depending on the type and complexity of the project. For example, the whole planning process may only take a few days for small, non-complex projects, or several years for large complex projects such as a major mining proposal. Nevertheless, there are some basic steps we go through for every project. The enclosure labeled "Project Planning Process and Where You Fit In" describes these steps and identifies what you can do to be involved. It is important for you to understand this process so that you may receive the environmental documents in which you are interested. I want to stress that your participation in these activities, in a timely manner, can promote better decisions by helping us better understand alternatives to our proposals and to evaluate their implications on the land and the adjacent communities.

If you would like more information on a specific project, please contact the district or forest contact person listed for each project.

Sincerely,

BOB CASTANEDA
Forest Supervisor

enclosure



DEFINITIONS USED FOR THE QUARTERLY SCHEDULE OF PROPOSED ACTIONS

If you've received previous editions of this list you'll notice that some projects don't appear anymore. That's because we've finished the analysis, made the decision, and the appeal period (if applicable) has ended. In other cases, we've removed the projects from the list because we're unable to pursue them for various reasons (lack of funding, conflicts with other forest priorities, etc.). Please call the person listed as the "contact" for a project anytime you have a question.

This list is not inclusive. Some projects may come up after publication that requires our immediate attention, and we may complete the decision document before the next edition.

At the top of each table we have listed the Ranger District, their address, and the "Newspaper of Record" (used by the District for legal notices of decisions, and scoping of projects).

The following items describe the column headings and contents in the tables that follow, beginning on the left side of the table.

MAP KEY: Identifies a number that goes with the attached small forest map to show the general location of the project.

TYPE OF PROJECT: Identifies the Resource Program area that's affected. Acronyms used area:

Mgmt - management

Exchg - Exchange

PROJECT NAME: Identifies the name of the environmental document. Also included is a general description of the project, such as estimated timber volume, acres proposed for treatment, acres involved with a land exchange, etc. Acronyms used are:

EIS - Environmental Impact Statement

WL - Wildlife

BPA - Bonneville Power Administration

OSR - Overstory Removal

ORV - Off Road Vehicle

Salv - Salvage

MMBF - Million board feet

LE - Land Exchange

MBF - Thousand board feet

CCF-Hundred cubic feet

RUP-Road use permit

LOCATION: Identifies both legal land description, and the drainage or other identifying on-the-ground feature. If a project is located within an inventoried roadless area, it is also noted here. Acronyms used are:

T - Township

R - Range

S - Section

NEPA STATUS: Identifies where we are and will be in the NEPA process during the next three months. This corresponds to the table "Project Planning Process". If several items are listed, it means we'll be moving through several stages of the planning process in the next three months. NOI means Notice of Intent that is published in the Federal Register.

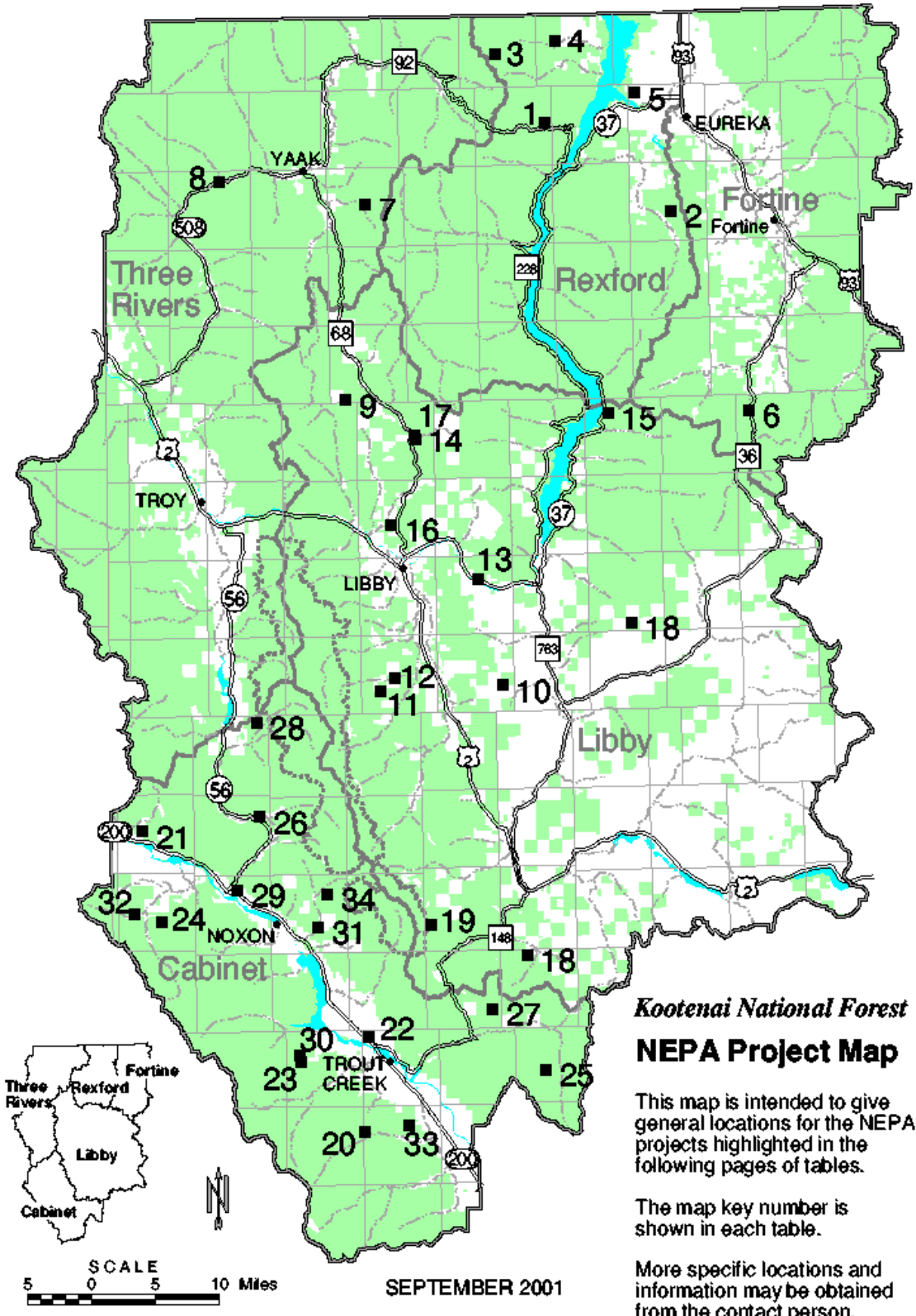
ANTICIPATED DECISION DATE: This is the best estimate of when the NEPA analysis will be completed. Sometimes we're not able to meet the date for various reasons, but the schedule will be validated and updated each time we send it out.

YEAR ACTIVITY TO START ON THE GROUND: This is the best estimate of when ground disturbing activities would occur and/or contracts or permits would be offered.

CONTACT PERSON: This is the person at the Ranger District or Forest to contact for further information regarding the project.

THE PROJECT PLANNING PROCESS & WHERE YOU MIGHT FIT

ANALYSIS STEP	PARTICIPATION OPTIONS
Identify need for project - Forest Service, business or individual suggests a project	Bring need for a project to the attention of Forest Service
Develop detailed project proposal (Forest Service or other project proponent)	Develop project proposal
Scoping - solicit public comment on the proposal (how it might affect forest resources & uses; how the project could be done better). This defines the scope of environmental analysis needed and the range of alternatives that should be considered	Comment on proposal - suggest issues, alternatives or mitigation measures to reduce impacts on the environment
Develop range of alternatives based on the issues raised during scoping. One alternative is to stay with the status quo (No Action)	Suggest variations to the original proposal
Initiate public comment process which includes a 45 day comment period for Draft EIS's and 30 day comment period for EA's and timber sales that can be categorically excluded. A copy of the EIS or EA will be mailed to those who requested a copy and to those who have participated in the environmental analysis process. A legal notice, requesting comments, will be published in the Daily Interlake, Kalispell, MT, which is our newspaper of record (36 CFR 215.5)	Provide comments on the environmental analysis. See 36 CFR 215.6 for description of information to provide
Notice of decision will be published in the newspaper of record. Copies of the decision document will be sent to those who submitted comments on the proposed action either before or during the comment period identified above (36 CFR 215.9)	Review decision: exercise option to appeal through administrative process
Appeal period will be open for 45 days following legal notice of decision in the newspaper except if no one expressed interest and there is no change from the proposed action. (36 CFR 215.10)	File Notice of Appeal (see section 36 CFR 215.14 for contents of an appeal) NOTE: Only those who commented through the process described above or expressed interest will be able to appeal. (36 CFR 215.11)
Implement the project	Contribute labor, equipment or funding
Monitor & evaluate project results	Provide feedback on the project



QUARTERLY SCHEDULE OF PROPOSED ACTIONS - September 2001

REXFORD RANGER DISTRICT, 1299 Highway 93 North, Eureka, MT 59917 - Phone: 406-296-2536, Fax: 406-296-2588 **NEWSPAPER OF RECORD:** *DAILY INTERLAKE*, Kalispell, MT

MAP KEY	TYPE OF PROJECT	NAME OF PROJECT	LOCATION	NEPA STATUS	ANTICIPATED DECISION DATE	YEAR ACTIVITY TO START ON GROUND	CONTACT PERSON
1	Timber Sale, Prescribed Burning, Thinning, Watershed Restoration	Gold/Boulder/Sullivan	T34-36N, R28, 29W, PMM, Lincoln Co., MT; Gold, Boulder, and Sullivan drainages. May include road decommissioning. Includes Forest Plan Amendments	Preparing Final EIS	September 2001	2001	Ron Komac
2	Timber Sale, Prescribed Burning, Watershed Restoration	Pink Stone EIS	T 34-36N, R27-29W, PMM, Lincoln Co., MT: Pinkham Creek drainage, may include road decommissioning. Includes Forest Plan Amendments.	Final EIS Release on August 24, 2001	September 2001	2001	Ron Komac
3	Timber Sale, Prescribed Burning, Watershed Restoration	Young J	T37N, R29W, PMM, Lincoln Co., MT; Young Creek drainage.	Responding to Public Comment	September 2001	2001	Ron Komac
4	Special Uses	Young Creek FRTA – State Access	T37N, R28W, Sec 17. Young Creek Drainage	Project on Hold	July 2001	2001	Jim Kilroy
5	Special Uses	Ingram Road Access	T36 N, R 27 W Sec 6 Douglas Hill Area	Project on Hold	August 2001	2001	Jim Kilroy

FORTINE RANGER DISTRICT, P.O. Box 116, Fortine, MT 59918 - Phone: 406-882-4451, Fax: 406-882-4835 **NEWSPAPER OF RECORD:** *DAILY INTERLAKE*, Kalispell, MT

MAP KEY	TYPE OF PROJECT	NAME OF PROJECT	LOCATION	NEPA STATUS	ANTICIPATED DECISION DATE	YEAR ACTIVITY TO START ON GROUND	CONTACT PERSON
6	Timber Sale	Fortine Timber Sales and Associated Activities EIS; 22000-46000 CCF (9-19 MMBF)	T33N, R26W, Sec. 21-22, 27-29, 31-35; T32; T32N, R28W. Sections 3-11, 14-36; T32N, R27W, Sections 1-2, 11-14, 23-26; T31N, R26W, Sections 3-5, 8-10, 15, and 16.	Developing Proposal	September 2002	2002	Joleen Dunham

THREE RIVERS RANGER DISTRICT, 1437 N. Highway 2, Troy, MT 59935 - Phone: 406-295-4693, Fax: 406-295-4142 **NEWSPAPER OF RECORD:** *DAILY INTERLAKE*, Kalispell, MT

MAP KEY	TYPE OF PROJECT	NAME OF PROJECT	LOCATION	NEPA STATUS	ANTICIPATED DECISION DATE	YEAR ACTIVITY TO START ON GROUND	CONTACT PERSON
7	Timber Sale, Planting, Watershed Improvement	Kelsey-Beaver	Portions of T35N, R32W; T35N, R31W; and T36N, R30W; Lincoln County, Montana. Also includes planting in Mt. Henry Roadless Area. May include Forest Plan Amendment, openings over 40 acres, and road decommissioning..	Seeking Public Comment	November 2001	2002	Mike Giesey
8	Special Use Permit/Easement	Cool Creek Access	T35N, R32W, Secs. 2, 3, 4, Lincoln County, Montana; across Yaak River from town of Yaak.	Analyzing Effects	November 2001	2001	Mark Natale

MAP KEY	TYPE OF PROJECT	NAME OF PROJECT	LOCATION	NEPA STATUS	ANTICIPATED DECISION DATE	YEAR ACTIVITY TO START ON GROUND	CONTACT PERSON
9	Timber Sale	Pipestone 13,170 CCF (5.4 MMBF). May include Forest Plan ORD amendment. Includes prescribed burning in the Gold Hill West Roadless Area, 65 miles of road decommissioning, .47 miles of road construction on FS lands by Plum Creek, 2.18 miles of reconstruction on FS lands by the FS and private landowners, 1000 feet of snowmachine trail construction, and .60 miles of temporary road construction.	T34N, R32W, Section 36; T34N, R31W, Sections 11,14,15,21-36; T34N, R30W, Section 1; T33N, R32W, Sections 1,12,23-5,36; T33N, R31W, Sections 1-36; T33N, R30W, Sections 18-20,29-33; T32N, R32W, Sections 1,12-13,24,25,36; T32N,R31W,Sections 1-36; T32N, R30W, Sections 5-10,15-21,29-32; T31N, R31W, Sections 1-22,29,30; T31N, R30W, Sections 4-9,17,18. Pipe Creek area.	Analyzing Effects	December 2001	2002	Tim Charnon
10	Timber Sale	South McSwede 5975 CCF (2.45 MMBF). Includes 590 acres of precommercial thinning, 3 miles of temp road construction, private land access, and 9 miles of road decommissioning.	T29N,R30W, Sections 28,29,32-34; T28N,R30W, Sections 1,2,9-15,22-27,33-36; T28N, R29W, Sections 7,8,18; T27N, R30W, Sections 4,5,9.	Seeking Public Comment	April 2002	2002	Tim Charnon
11	Fuels Reduction	Treasure Interface Fuels Reduction. Approximatley 282 of commercial thinning to reduce fule loads along Granit Lake Creek road and adjacent subdivisions.	T30N, R31W, Sections 22, 27, 28 and 33-35. Granit Lake Road area	Seeking Public Comment	December 2001	2002	Tim Charnon
*	Silviculture	Precommercial thinning. Approximately 3385 acres.	Libby District	Complete	June 13, 2001	2001	Tim Charnon
*	Silviculture	Tree pruning	Libby District	Analyzing Effects	December 2001	2001	Tim Charnon
12	Recreation	Flower Creek parking lot expansion.	T30N, R31W, Section 21. Flower cross country ski area.	Seeking Public Comment	November 2001	2001	Jon Jeresek
13	Recreation/ Minerals	Re-Reg. Mineral material removal associated with boat ramp, parking and restroom construction.	T30N, R30W, Section 10. Adjacent to Highway 37 at the 8.7 mile post.	Analyzing Effects	January 2002	2004	Bobbi Lacklen
*	Minerals	Mineral Material Sources. Expansion and reclamation of 79 existing gravel pits.	Libby Ranger District	Analyzing Effects	January 2002	2002	Bobbi Lacklen
14	Special uses	Beebe road request. Includes reconstruction of 400 feet of existing road on FS lands.	T32N, R31W, Section 14. Pipe Creek area. May be included in Pipestone decision.	Analyzing Effects	October 2001	2001	Dick Harlow
15	Special uses	Spring Creek road access. Includes ¼ mile road construction.	T32N, R28W, Section 5. Volcour Gulch area.	Seeking Public Comment	October 2001	2001	Dick Harlow
16	Special uses	Young road request. Includes reconstruction of 1.2 miles of existing road on FS lands. Formerly known as Pipe Creek private road.	T31N, R31W, Section 21. Pipe Creek area. May be included in Pipestone decision.	Analyzing Effects	October 2001	2001	Dick Harlow
17	Special uses	Burrier road request. Includes reconstruction (widening) of 200 feet	T32N, R31W, Section 14. Pipe Creek area. May be included in Pipestone decision.	Analyzing Effects	October 2001	2001	Dick Harlow

of existing road on FS lands.

LIBBY RANGER DISTRICT: continued

MAP KEY	TYPE OF PROJECT	NAME OF PROJECT	LOCATION	NEPA STATUS	ANTICIPATED DECISION DATE	YEAR ACTIVITY TO START ON GROUND	CONTACT PERSON
18	Special uses	Installation of 7 miles of fiberoptic lines where existing lines occur. May include road improvements.	T25N, R29W, Sec 11,12; T25N, R30W, Sec 5,6; T26N, R30W, Sec 33, 34, 35, 36; T26N, R31W, Sec 17,18, 19, 30; T30N, R27W, Sec 34; T30N, R28W, Sec 2,3,4,5,12. Dunn Creek, Canyon Creek and Silver Butte areas.	Seeking Public Comment	October 2001	2001	Dick Harlow
19	Special uses	Bear Lakes access request. Livestock use of existing trail and 200' of associated trail construction accessible to livestock. Trail accesses private lands.	T26N, R30W, Section 30. Silver Butte area.	Seeking Public Comment	December 2001	2001	Dick Harlow

CABINET RANGER DISTRICT, 2693 Highway 200, Trout Creek, MT 59874 - Phone: 406-827-3533, Fax: 406-827-3203 NEWSPAPER OF RECORD: DAILY INTERLAKE, Kalispell, MT

MAP KEY	TYPE OF PROJECT	NAME OF PROJECT	LOCATION	NEPA STATUS	ANTICIPATED DECISION DATE	YEAR ACTIVITY TO START ON GROUND	CONTACT PERSON
20	Timber Sale	Whitepine Creek EIS 33,000 CCF (15MMBF). Includes up to 52 miles road decommissioning. Possible Forest Plan amendments for management of old growth, open road densities, cavity nesting habitat. May include Regional Forester approval of openings over 40 acres. NOI published April 23, 1999.	T22N, R32W, Sec 4,5; T23N, R31W, Sec 3-11, 14-24, 27-30; T23N, R32W, Sec 1-3, 10-17, 20-29, 31-34; T24N, 31W, Sec 31-33; T24N, R32W, Sec 24-26, 35, 36. Whitepine Creek Drainage south of the town of Trout Creek.	Draft EIS expected Sept 2001	November 2001	2002	John Gubel
21	Timber Sale	Fat Blue Eddy EA	T27N, R34W, Sec 7-10, 15-18, 21-23, 24,25; Blue Cr., and Big Eddy Cr. drainages near Heron, MT	Developing Proposed Action, and public scoping	May 2002	2003	John Head
*	Pre-commercial Thinning	Cabinet District Pre-commercial Thinning FY01 DM	Various locations across the District. Approximately 1139 acres.	Analyzing Effects	Sept 2001	2001	Gene Newell
22	Fuel Reduction	Administrative Site Fuel Reduction DM	T24N, R31W, Sec 31 Cabinet Ranger Station Administrative Site	Complete	June 7, 2001 (signed)	2001	John Head
23	Fuel Reduction	Tuscor Face Pine Restoration DM	T24N, R32W, Sec 17, 18, 19, 20 Minton Pk Area	Complete	8/8/01 (signed)	2001	John Head
24	Fuel Reduction	Elk Creek Rural Interface Natural Fuels Reduction DM	T26N, R34W, Sec 16, 20, 21, 28, 33; T25N, R34W, Sec 2, 3 Elk Creek Area	Complete	June 7, 2001 (signed)	2001	Robert Lambrecht
25	Prescribed fire	Upper Vermilion Elk Habitat Improvement DM	T24,25 N; R29W; Sec. 35,1,2,9,10,11,14,15,16,21,22	Scoping and analysis of effects	Feb 2002	2002	Steve Johnsen
26	Recreation	Berray Mountain Trail #967 Reroute Construction (1/2 mile) DM	T27N, R33W, Sec 12	Complete	July 24, 2001 (signed)	2001	Bruce Haflich
27	Recreation	Elk Lake Trailhead Improvement DM	T25N, R30W, Sec 25 Simms Creek area, Vermilion River	Complete	July 24, 2001 (signed)	2001	Bruce Haflich
28	Recreation	Northfork Bull/ Middle Fork Bull Trailhead Expansion DM	T28N, R33W, Sec 1 & 11, Bull River Area.	Complete	July 24, 2001 (signed)	2001	Bruce Haflich
29	Recreation	Bull River Campground Riverbank Stabilization DM	T28N, R33W, Sec 1 & 11, Bull River Area.	Analyzing Effects	Sept 2001	2001	Bruce Haflich
30	Stream Improvement	Trout Creek Riparian Revegetation DM	T24N; R32W; Sec. 24	Scoping and analysis of effects	Oct 2001	2001	Doug Grupenhoff
31	Stream Improvement	Rock Creek Sediment Abatement DM	T26N; R32W; Sec. 27	Scoping and analysis of effects	Oct 2001	2001	Doug Grupenhoff
32	Special Uses	West Fork Elk Creek Phone Line DM	T26N, R34W, Sec 20, Elk Creek Area	Complete	July 2001	2001	Bruce Haflich

33	Special Uses	Whitepine Telephone Line DM	T23N, R31W; Sec. 16	Scoping and analysis of effects	Sept 2001	2001	Bruce Haflich
----	--------------	-----------------------------	---------------------	---------------------------------	-----------	------	---------------

KOOTENAI SUPERVISORS OFFICE, 1101 US Hwy 2 West, Libby, MT 59923 - Phone: 406-293-6211, Fax: 406-293-6418 **NEWSPAPER OF RECORD:** *DAILY INTERLAKE, Kalispell, MT*

MAP KEY	TYPE OF PROJECT	NAME OF PROJECT	LOCATION	NEPA STATUS	ANTICIPATED DECISION DATE	YEAR ACTIVITY TO START ON GROUND	CONTACT PERSON
34	Minerals	STERLING; Copper/ Silver Mine	T26N, R32W; Rock Creek. Includes FP amendments	Preparing FEIS	October 2001	2002	John McKay
*	Fuels	Forestwide Fuels Reduction	Forestwide (site specific locations available upon request)	Revising EA	November 2001	2002	Joe Krueger (406-283-7774)
*	Grizzly Bear Forest Plan Amendments	Forest Plan Amendments For Access Management in Grizzly Bear Habitat Within Selkirk/Cabinet-Yaak Recovery Zones.	Portions of Lolo NF, Idaho Panhandle NF, and Kootenai NF.	Draft EIS expected October 2001	February 2002	2002	Rob Carlin (406-882-4451)
*	Northern Rockies Lynx Amendment	Forest Plan Amendments for Lynx	18 National Forests in Regions 1, 2 and 4.	Beginning Public Scoping	July 2002	2002	John Haber (406-329-3399)