

September 20, 2000

The Kootenai National Forest is involved in many programs and activities. Enclosed you will find a copy of the latest issue of the "Kootenai Highlights" and information about projects for which we have a specific proposal, and are in the process of analyzing as directed by the National Environmental Policy Act (NEPA).

The projects are arranged in a table format and are sorted by Ranger District, by type of project, and by date expected for each decision for each project. There are several points in the planning process during which you can be the most helpful and influential, but exact steps and timing may vary depending on the type and complexity of the project. For example, the whole planning process may only take a few days for small, non-complex projects, or several years for large complex projects such as a major mining proposal. Nevertheless, there are some basic steps we go through for every project. The enclosure labeled "Project Planning Process and Where You Fit In" describes these steps and identifies what you can do to be involved. It is important for you to understand this process so that you may receive the environmental documents in which you are interested.

The Kootenai is adjusting the process we use to keep you informed of our projects. We will now only be sending scoping letters for projects in which you may have previously expressed an interest. In order to receive documents (i.e., Decision Memos, Environmental Assessments, Environmental Impact Statements) related to a particular project, it is your responsibility to contact the project coordinator and have your name placed on that particular projects mailing list. I want to stress that your participation in these activities, in a timely manner, can promote better decisions by helping us better understand alternatives to our proposals and to evaluate their implications on the land and the adjacent communities.

If you would like more information on a specific project, please contact the district or forest contact person listed for each project.

Sincerely,

BOB CASTANEDA
Forest Supervisor

DEFINITIONS USED FOR THE QUARTERLY SCHEDULE OF PROPOSED ACTIONS

If you've received previous editions of this list you'll notice that some projects don't appear anymore. That's because we've finished the analysis, made the decision, and the appeal period (if applicable) has ended. In other cases, we've removed the projects from the list because we're unable to pursue them for various reasons (lack of funding, conflicts with other forest priorities, etc.). Please call the person listed as the "contact" for a project anytime you have a question.

This list is not inclusive. Some projects may come up after publication that requires our immediate attention, and we may complete the decision document before the next edition.

At the top of each table we have listed the Ranger District, their address, and the "Newspaper of Record" (used by the District for legal notices of decisions, and scoping of projects).

The following items describe the column headings and contents in the tables that follow, beginning on the left side of the table.

MAP KEY: Identifies a number that goes with the attached small forest map to show the general location of the project.

TYPE OF PROJECT: Identifies the Resource Program area that's affected. Acronyms used are:
Mgmt - management
Exchg - Exchange

PROJECT NAME: Identifies the name of the environmental document. Also included is a general description of the project, such as estimated timber volume, acres proposed for treatment, acres involved with a land exchange, etc. Acronyms used are:
EIS - Environmental Impact Statement
BPA - Bonneville Power Administration
ORV - Off Road Vehicle
MMBF - Million board feet
MBF - Thousand board feet
RUP - Road use permit
WL - Wildlife
OSR - Overstory Removal
Salv - Salvage
LE - Land Exchange
CCF - Hundred cubic feet

LOCATION: Identifies both legal land description, and the drainage or other identifying on-the-ground feature. If a project is located within an inventoried roadless area, it is also noted here. Acronyms used are:

T - Township R - Range S - Section

NEPA STATUS: Identifies where we are and will be in the NEPA process during the next three months. This corresponds to the table "Project Planning Process". If several items are listed, it means we'll be moving through several stages of the planning process in the next three months. NOI means Notice of Intent that is published in the Federal Register.

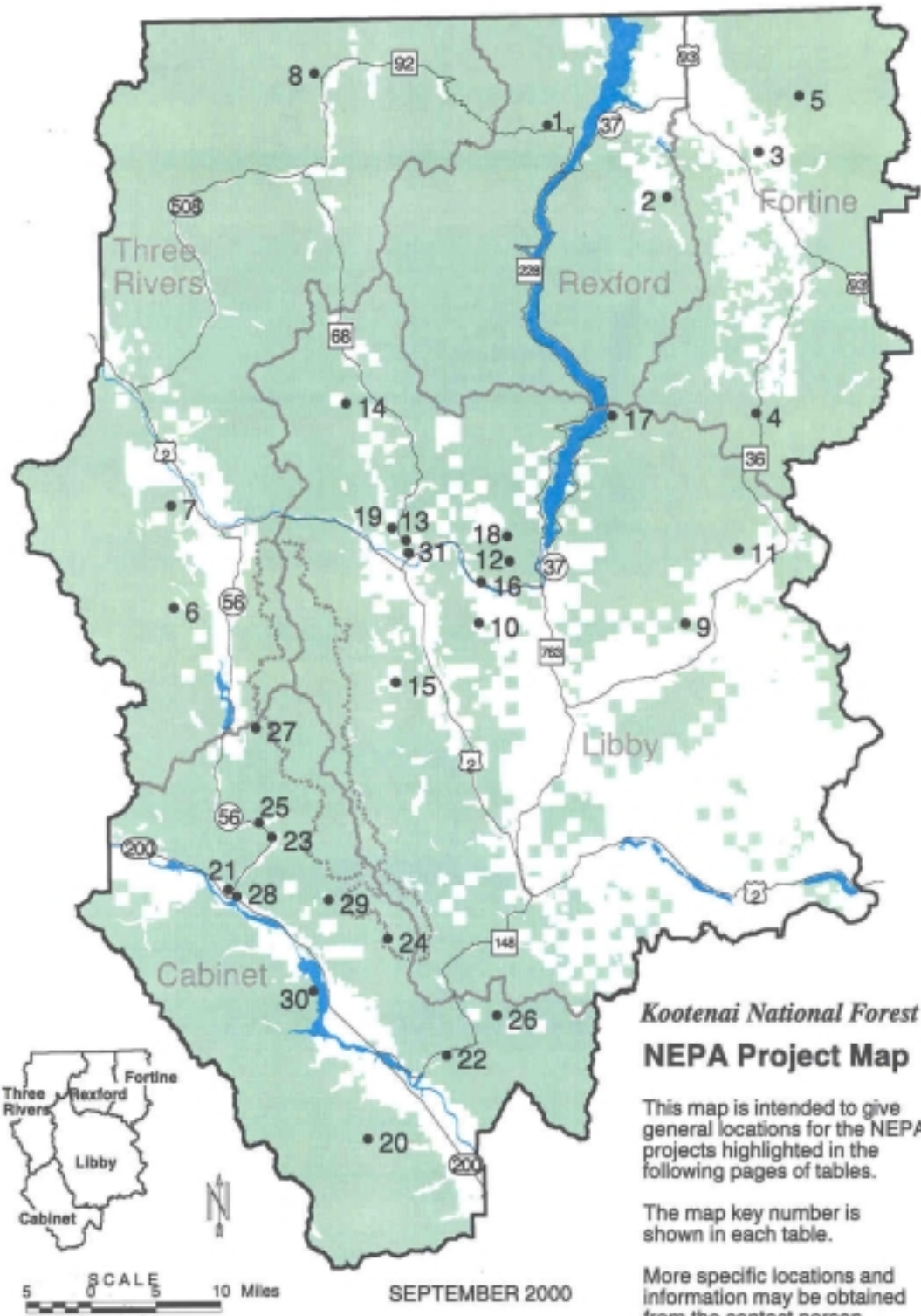
ANTICIPATED DECISION DATE: This is the best estimate of when the NEPA analysis will be completed. Sometimes we're not able to meet the date for various reasons, but the schedule will be validated and updated each time we send it out.

YEAR ACTIVITY TO START ON THE GROUND: This is the best estimate of when ground disturbing activities would occur and/or contracts or permits would be offered.

CONTACT PERSON: This is the person at the Ranger District or Forest to contact for further information regarding the project.

THE PROJECT PLANNING PROCESS & WHERE YOU MIGHT FIT

ANALYSIS STEP	PARTICIPATION OPTIONS
Identify need for project - Forest Service, business or individual suggests a project	Bring need for a project to the attention of Forest Service
Develop detailed project proposal (Forest Service or other project proponent)	Develop project proposal
Scoping - solicit public comment on the proposal (how it might affect forest resources & uses; how the project could be done better). This defines the scope of environmental analysis needed and the range of alternatives that should be considered	Comment on proposal - suggest issues, alternatives or mitigation measures to reduce impacts on the environment
Develop range of alternatives based on the issues raised during scoping. One alternative is to stay with the status quo (No Action)	Suggest variations to the original proposal
Initiate public comment process which includes a 45 day comment period for Draft EIS's and 30 day comment period for EA's and timber sales that can be categorically excluded. A copy of the EIS or EA will be mailed to those who requested a copy and to those who have participated in the environmental analysis process. A legal notice, requesting comments, will be published in the Daily Interlake, Kalispell, MT, which is our newspaper of record (36 CFR 215.5)	Provide comments on the environmental analysis. See 36 CFR 215.6 for description of information to provide
Notice of decision will be published in the newspaper of record. Copies of the decision document will be sent to those who submitted comments on the proposed action either before or during the comment period identified above (36 CFR 215.9)	Review decision: exercise option to appeal through administrative process
Appeal period will be open for 45 days following legal notice of decision in the newspaper except if no one expressed interest and there is no change from the proposed action. (36 CFR 215.10)	File Notice of Appeal (see section 36 CFR 215.14 for contents of an appeal) NOTE: Only those who commented through the process described above or expressed interest will be able to appeal. (36 CFR 215.11)
Implement the project	Contribute labor, equipment or funding
Monitor & evaluate project results	Provide feedback on the project



QUARTERLY SCHEDULE OF PROPOSED ACTIONS - SEPTEMBER 2000

REXFORD RANGER DISTRICT, 1299 Highway 93 North, Eureka, MT 59917 - Phone: 406-296-2536, Fax: 406-296-2588 **NEWSPAPER OF RECORD:** DAILY INTERLAKE, Kalispell, MT

MAP KEY	TYPE OF PROJECT	NAME OF PROJECT	LOCATION	NEPA STATUS	ANTICIPATED DECISION DATE	YEAR ACTIVITY TO START ON GROUND	CONTACT PERSON
1	Timber Sale, Prescribed Burning, Thinning, Watershed Restoration	Gold/Boulder/Sullivan May include road decommissioning. Includes Forest Plan Amendments	T34-36N, R28, 29W, PMM, Lincoln Co., MT; Gold, Boulder, and Sullivan drainages.	Developing Alternatives	January 2001	2001	Ron Komac
2	Mineral Material Source	Virginia Hill Quarry	T35N, R27W, Sec 16. Virginia Hill Area	Developing Alternatives	January 2001	2001	Jennifer Swan

FORTINE RANGER DISTRICT, P.O. Box 116, Fortine, MT 59918 - Phone: 406-882-4451, Fax: 406-882-4835

NEWSPAPER OF RECORD: DAILY INTERLAKE, Kalispell, MT

MAP KEY	TYPE OF PROJECT	NAME OF PROJECT	LOCATION	NEPA STATUS	ANTICIPATED DECISION DATE	YEAR ACTIVITY TO START ON GROUND	CONTACT PERSON
3	Timber Sale	Foothills Management Project EA; 4232-5737 CCF (1.8-2.4 MMBF) Proposes road decommissioning.	T36N, R26W, Sections 15, 17, 20, 23, 27, 28, 33 and 34; T35N, R26W Sections 2, 3, 4, 10 and 11.	Decision Pending	October 2000	2001	Toby Spribille
4	Timber Sale	Fortine Timber Sales and Associated Activities EIS; 22000-46000 CCF (9-19 MMBF)	T33N, R26W, Sec. 21-22, 27-29, 31-35; T32; T32N, R28W. Sections 3-11, 14-36; T32N, R27W, Sections 1-2, 11-14, 23-26; T31N, R26W, Sections 3-5, 8-10, 15, and 16.	Developing Proposal	June 2001	2002	Joleen Dunham
5	Watershed Restoration	Channel Restoration-Stahl and Clarence Creek Drainages	T36N, R25W, Sections 5, 9,10,15, and 16; T37N, R25W Sections 34 and 35.	Decision Signed 7/7/00	Completed	2000	Don Tincher
6	Special Uses	Re-Issuance of Special Use Permit; Lincoln Electric Co-op, Inc.	Rexford, Fortine, and Libby Ranger Districts	Seeking Public Comment	Nov 2000	2000	Steve Gauger

The United States Department of Agriculture (USDA) prohibits discrimination in its programs on the basis of race, color, national origin, sex, religion, age, disability, political beliefs, and marital or familial status. (Not all prohibited bases apply to all programs.) Persons with disabilities who require alternative means of communication of program information (braille, large print, audiotape, etc.) should contact the USDA Office of Communications at (202) 720-2791 (voice) or 1-800-855-1234 (TDD). To file a complaint, write the Secretary of Agriculture, U.S. Department of Agriculture, Washington, D.C. 20250, or call 1-800-245-6340 (voice), or 202-720-1127 (TDD). USDA is an equal employment opportunity employer.

MAP KEY	TYPE OF PROJECT	NAME OF PROJECT	LOCATION	NEPA STATUS	ANTICIPATED DECISION DATE	YEAR ACTIVITY TO START ON GROUND	CONTACT PERSON
7	Timber Sale, Prescribed Burning, Thinning, Watershed Restoration	Spar and Lake Subunits Forest Health Project. Includes road decommissioning. Prescribed burning activities are proposed within the Scotchman Peaks Inventoried Roadless Area and/or proposed wilderness area. Includes Forest Plan Amendments.	T28N - T31N, R33W and 34W, PMM, Lincoln Co., MT; Iron, Keeler, Twilight, Stanley, Ross, Camp, Madge, Spring, and Noggle drainages	Decision Pending	October 2000	2001	Kathy Mohar
8	Timber Sale	Troy Beetle Salvage Includes Forest Plan Amendment.	Sec. 20, T34N, R34W; Sec. 32, 33, T34N, R33W; Sec. 20, 31, 32, T33N, R33W; Sec. 3, 10, 15, T33N, R34W; Sec. 16, 18-20, 29, T32N, R33W; Sec. 13, T32N, R34W; Sec. 2, T32N, R35W; Sec. 2, 4, 9, T31N, R33W; Sec. 1, 12, T31N, R32W; Sec. 2, 3, 10, 11, 14, 15, 23, 24, 26, T31N, R34W; Lincoln County, Montana; and Sec. 10, T60N, R3E, Boundary County, Idaho.	Decision Pending	October 2000	2001	Kathy Mohar
9	Prescribed Burning, Timber Sale	Yaak Community Hall Fuels Reduction	T36N, R31W, Sec. 30, PMM, Lincoln Co., MT.	Deferred			Kathy Mohar
*	Silviculture	Timber Stand Improvement 2000	Districtwide	Decision Signed 6/26/00	Completed	2000	Joe Hessenkemper

MAP KEY	TYPE OF PROJECT	NAME OF PROJECT	LOCATION	NEPA STATUS	ANTICIPATED DECISION DATE	YEAR ACTIVITY TO START ON GROUND	CONTACT PERSON
10	Timber Sale	Syrup Salvage; 5122 CCF (2.0 MMBF). Includes over 40 acre opening, Forest Plan amendments for HC and ORD and 6 miles of road decommissioning.	T29N, R27W, Sections 19-20 and 30-33 and T29N, R28W, Sections 13 and 24; Syrup Creek Drainage.	Decision Signed 6/18/00		2001	Tim Charnon
11	Timber Sale	McSwede; 12,070 CCF (4.9 MMBF). Includes a Forest Plan VQO amendment, 12 miles of road decommissioning and 1.2 miles of road construction.	T30N, R31W, Sections 1, 12, 13 and 24; T30N, R30W, Sections 6-8, 17-20 and 30-33; T29N, R30W, Sections 3-10. Swede and McMillan areas.	Decision Signed 6/27/00		2001	Tim Charnon

LIBBY RANGER DISTRICT: Canoe Gulch RS, 12557 HWY 37, Libby, MT 59923 Phone: 406-293-7773, FAX: 406-293-5758 NEWSPAPER OF RECORD: DAILY INTERLAKE, Kalispell, MT

12	Timber Sale	Sheppard Salvage 2930 CCF (1.2 MMBF). Includes 3.85 miles of road decommissioning.	T31N, R27W, Section 36, T31N, R26W, Section 31, T30N, R26W, Sections 3,4,9,10, & 15. Sheppard Mountain area.	Decision Pending	October 2000	2001	Kirsten Kaiser
13	Timber Sale	Alexander 5364 CCF (2.2 MMBF). Includes Forest Plan ORD and cavity habitat amendments, prescribed burning in the Alexander Inventoried Roadless Area, 12 miles of road decommissioning, .2 miles of temporary road construction and .70 miles of road construction on FS lands to access private lands.	T31N, R29W, Sections 7-9,16-21,28-33; T31N, R30W, Sections 3,4,9-11,13-17,20-29,32-36;T30N, R30W, Sections 1-5,9-15; T30N, R29W, Sections 5-8,17,18; T32N, R30W, Sections 32-34. Alexander and Rainy Creek drainages.	Decision Pending	October 2000	2001	Kirsten Kaiser
14	Timber Sale	Sheldon Heights 6340 CCF (2.6 MMBF)	T31N, R30W, Sections 20, 29,30; T31N, R31W, Sections 10,11,14,15,16,21-27,34. Sheldon Mountain area.	Analyzing Effects	October 2000	2001	Kirsten Kaiser
15	Timber Sale	Pipestone 17,800 CCF (7.3 MMBF). May include Forest Plan ORD amendment, openings greater than 40 acres, prescribed burning in the Gold Hill West Roadless Area, 56 miles of road decommissioning and road construction.	T34N, R32W, Section 36; T34N, R31W, Sections 11,14,15,21-36; T34N, R30W, Section1; T33N, R32W, Sections 1,12,23-5,36; T33N, R31W, Sections 1-36; T33N, R30W, Sections 18-20,29-33; T32N, R32W, Sections 1,12-13,24,25,36; T32N, R31W, Sections 1-36; T32N, R30W, Sections 5-10,15-21,29-32; T31N, R31W, Sections 1-22,29,30; T31N, R30W, Sections 4-9,17,18. Pipe Creek area.	Developing Alternatives	January 2001	2001	Kirsten Kaiser
16	Recreation	Flower Creek parking lot expansion.	T30N, R31W, Section 21. Flower cross country Ski area.	Seeking Public Comment	January 2001	2001	Jon Jeresek
17	Minerals	Re-Reg Mineral Material. Removal of mineral material to begin boat ramp construction in 2004.	T30N, R30W, Section 10. Adjacent to Highway 37 at the 8.7mile post.	Seeking Public Comment	January 2001	2001	Bobbi Lacklen
*	Minerals	Mineral Material Sources. Expansion and reclamation of 79 existing gravel pits.	Libby Ranger District	Analyzing Effects	April 2001	2001	Bobbi Lacklen
18	Special uses	Spring Creek road access Includes 1/4 mile road construction.	T32N, R28W, Section 5. Volcour Gulch area.	Seeking Public Comment	October 2000	2001	Dick Harlow
19	Special uses	Bonneville Power Association (BPA) Road Access. Includes 1/4 mile road construction.	T31N, R30W, Section 25. Alexander Creek area.	Decision pending	February 2001	2001	Dick Harlow
20	Special uses	Pipe Creek Private Road Reconstruction of 1 mile of existing road on FS lands.	T31N, R31W, Section 21. Pipe Creek area.	Decision Pending	February 2001	2001	Dick Harlow

MAP KEY	TYPE OF PROJECT	NAME OF PROJECT	LOCATION	NEPA STATUS	ANTICIPATED DECISION DATE	YEAR ACTIVITY TO START ON GROUND	CONTACT PERSON
21	Timber Sale	Whitepine Creek EIS 33,000 CCF (15MMBF). Project includes up to 52 miles road decommissioning. Possible Forest Plan amendments for management of old growth, open road densities, cavity nesting habitat. May include Regional Forester approval of openings over 40 acres. NOI published April 23, 1999.	T22N, R32W, Sec 4,5: T23N, R31W, Sec 3-11, 14-24, 27-30: T23N, R32W, Sec 1-3, 10-17, 20-29, 31-34: T24N, 31W, Sec 31-33: T24N, R32W, Sec 24-26, 35, 36. Whitepine Creek Drainage south of the town of Trout Creek.	Draft EIS expected November 2000	February 2001	2001	John Gubel
22	Timber Sale	Bull Liber SSTS, 270 CCF, (125MBF)	T26N, R33W, Sec 3, 4. Bull River area at the junction of Highways 200 and 56.	Decision Notice signed 7/5/00		2000	John Head
23	Minerals	Vermilion Suction Dredging. Recreational gold dredging.	T24N, R30N, Sec 8, Vermilion River/ Cataract Creek area.	Decision Notice signed 6/7/00		2001	Bruce Haflich
24	Minerals	Palouse Resources, Lost Girl Drilling. Three minerals exploration holes.	T27N, R32W, Sec 5. East Fork Bull River, Lost Girl Creek area.	Decision Memo signed 7/25/00		2001	Bruce Haflich
*	Silviculture	Pre-commercial thinning, district-wide program, FY00. Outside lynx habitat.	T28N, R32W, Sec 6,30,31,36: T28N, R33W, Sec 14,24: T26N, R32W, Sec 27,28,33: T24N, R31W, Sec 6	Decision Memo signed 6/9/00	June 2000	2000	Gene Newell
25	Recreation	Wanless Lake Trail Project	T26N, R31W, Sec 26, 34	Decision Memo signed 7/26/00		2000	Bruce Haflich
26	Recreation	Berray Mountain Trail #967 Reroute Construction (1/2 mile)	T27N, R33W, Sec 12 Snake Creek Pass area.	Seeking public comment	February 2001	2001	Bruce Haflich
27	Recreation	Elk Lake Trailhead Improvement	T25N, R30W, Sec 25 Simms Creek area, Vermilion River	Seeking public comment	December 2000	2001	Bruce Haflich
28	Recreation	Northfork Bull/ Middle Fork Bull Trailhead Expansion	T28N, R33W, Sec 1 & 11, Bull River Area.	Seeking public comment	June 2001	2001	Bruce Haflich
29	Recreation	Bull River Campground Riverbank Stabilization	T28N, R33W, Sec 1 & 11, Bull River Area.	Seeking public comment	June 2001	2001	Bruce Haflich

MAP KEY	TYPE OF PROJECT	NAME OF PROJECT	LOCATION	NEPA STATUS	ANTICIPATED DECISION DATE	YEAR ACTIVITY TO START ON GROUND	CONTACT PERSON
30	Minerals	STERLING; Copper/ Silver Mine	T26N, R32W; Rock Creek. Includes FP amendments	Responding to Comments	June 2001	2001	John McKay
31	Land Exchange	Crown Pacific Land Exchange	Portions of: T29N, R33W, Sec19; T31N, R34W, Sec 2; T34N, R34W, Sec 29;	Preparing Decision Notice	October 2000	2000	Tom Grabinski
32	Special Use Permit	Old Libby Ranger District Administrative Site. Temporary Special Use Permit to authorize HeadStart to occupy buildings at old Libby District Office.	T58N, R30W, Sec 34. 2 Buildings.	Decision Memo Signed	August 2000	2000	Bob Castaneda
*	Travel Management/ Forest Plan Amendment	BLM and FS Off-Highway Vehicle Forest Plan Amendment / EIS for MT, ND and Portions of SD	All BLM and FS lands in MT, ND and portions of SD excluding lands administered by Region 2 of the FS.	Draft EIS issued 11/15/99- Responding to Comments	December 2000	2001	Jerry Majerus BLM (406-538-1924)