



United States
Department of
Agriculture

Forest
Service

Kootenai National Forest
406 293-6211

Forest Supervisor's Office
1101 US Highway 2 West
Libby MT 59923

File Code: 1950

Date: June 4, 2002

The Kootenai National Forest is contributing to the national objective of making information available electronically. This objective is "eGov" (electronic government) and applies to all federal agencies. Therefore, the attached NEPA Schedule of Proposed Actions (SOPA) is now also available on our website at www.fs.fed.us/r1/kootenai/projects/.

I would like to strongly encourage everyone to utilize our website. Using the Internet is the most efficient, current and cost effective way of receiving information. Our future goal is to have all of our public information available to you on the website. Today, you can sign up to subscribe to the SOPA by visiting this website. You will receive an email message each time the SOPA is published.

If you don't have a computer or would like to continue to receive this SOPA by regular mail, please return the enclosed response form. **If you do not fill out the response form you will be removed from our "regular-mail" mailing list.**

The next few pages contain information to help you understand the SOPA format and the associated NEPA (National Environmental Policy Act) process. It is important for you to understand this process so that you can request the environmental documents that really interest you. I want to stress that your participation in these activities, in a timely manner, can promote better decisions by helping us understand alternatives to our proposals and to evaluate their implications on the land and the adjacent communities.

If you would like more information on a specific project identified on the SOPA, please contact the district or forest contact person listed for each project. Or you may contact us by email at r1_kootenai_sopa@fs.fed.us.

Sincerely,

BOB CASTANEDA
Forest Supervisor

Enclosure

The U.S. Department of Agriculture (USDA) prohibits discrimination in its programs on the basis of race, color, national origin, sex, religion, age, disability, political beliefs, sexual orientation, or marital or family status. (Not all prohibited bases apply to all programs.) Persons with disabilities who require alternative means for communication of program information (Braille, large print, audiotape, etc.) should contact USDA's TARGET Center at 202-720-2600 (voice and TDD). To file a complaint of discrimination, write USDA, Director, Office of Civil Rights, Room 326-W, Whitten Building, 1400 Independence Avenue SW, Washington, DC 20250-9410, or call 202-720- 5964 (voice or TDD). USDA Forest Service is an equal opportunity provider and employer.



Caring for the land and serving people.

INFORMATION ABOUT THE QUARTERLY SCHEDULE OF PROPOSED ACTIONS (SOPA)

The enclosed SOPA provides information about projects for which we have a specific proposal and are in the process of analyzing, as directed by the National Environmental Policy Act (NEPA).

Projects on the SOPA are arranged in a table format and are sorted by Ranger District, by type of project, and by date expected for each decision for each project. There are several points in the planning process during which you can be the most helpful and influential, but exact steps and timing may vary depending on the type and complexity of the project. For example, the whole planning process may only take a few days for small, non-complex projects, or several years for large complex projects such as a major mining proposal. The enclosure labeled "Project Planning Process and Where You Fit In" describes these steps and identifies what you can do to be involved.

DEFINITIONS USED FOR THE SOPA

If you've received previous editions of this list you'll notice that some projects don't appear anymore. That's because we've finished the analysis, made the decision, and the appeal period (if applicable) has ended. In other cases, we've removed the projects from the list because we're unable to pursue them for various reasons (lack of funding, conflicts with other forest priorities, etc.). Please contact the person listed as the "contact" for a project anytime you have a question or would like to be included on the mailing list for the given project.

This list is not inclusive. Some projects may come up after publication that requires our immediate attention, and we may complete the decision document before the next edition.

At the top of each table we have listed the Ranger District, their address, and the "Newspaper of Record" (used by the District for legal notices of decision, and scoping of projects).

The following items describe the column headings and contents in the tables that follow.

MAP KEY: Identifies a number that goes with the attached small forest map to show the general location of the project.

TYPE OF PROJECT: Identifies the Resource Program area that's affected. Acronyms used include:

Mgmt – management

Exchg – Exchange

NAME OF PROJECT: Identifies the name of the environmental document. Acronyms used are:

EIS - Environmental Impact Statement

EA – Environmental Assessment

BPA – Bonneville Power Administration

OSR – Overstory Removal

ORV – Off Road Vehicle

Salv – Salvage

MMBF – Million board feet

LE – Land Exchange

MBF – Thousand board feet

CCF-Hundred cubic feet

RUP-Road Use Permit

LOCATION & PROJECT DESCRIPTION: Identifies both legal land description and the drainage or other identifying on-the-ground feature. If a project is located within an inventoried roadless area it is also noted here. Also included is a general description of the project, such as estimated timber volume, acres proposed for treatment, acres involved with a land exchange, etc.

Acronyms used are: T – Township

R – Range

S – Section

NEPA STATUS: Identifies where we are in the NEPA process. Acronyms used are:

NOI- Notice of Intent published in the Federal Register

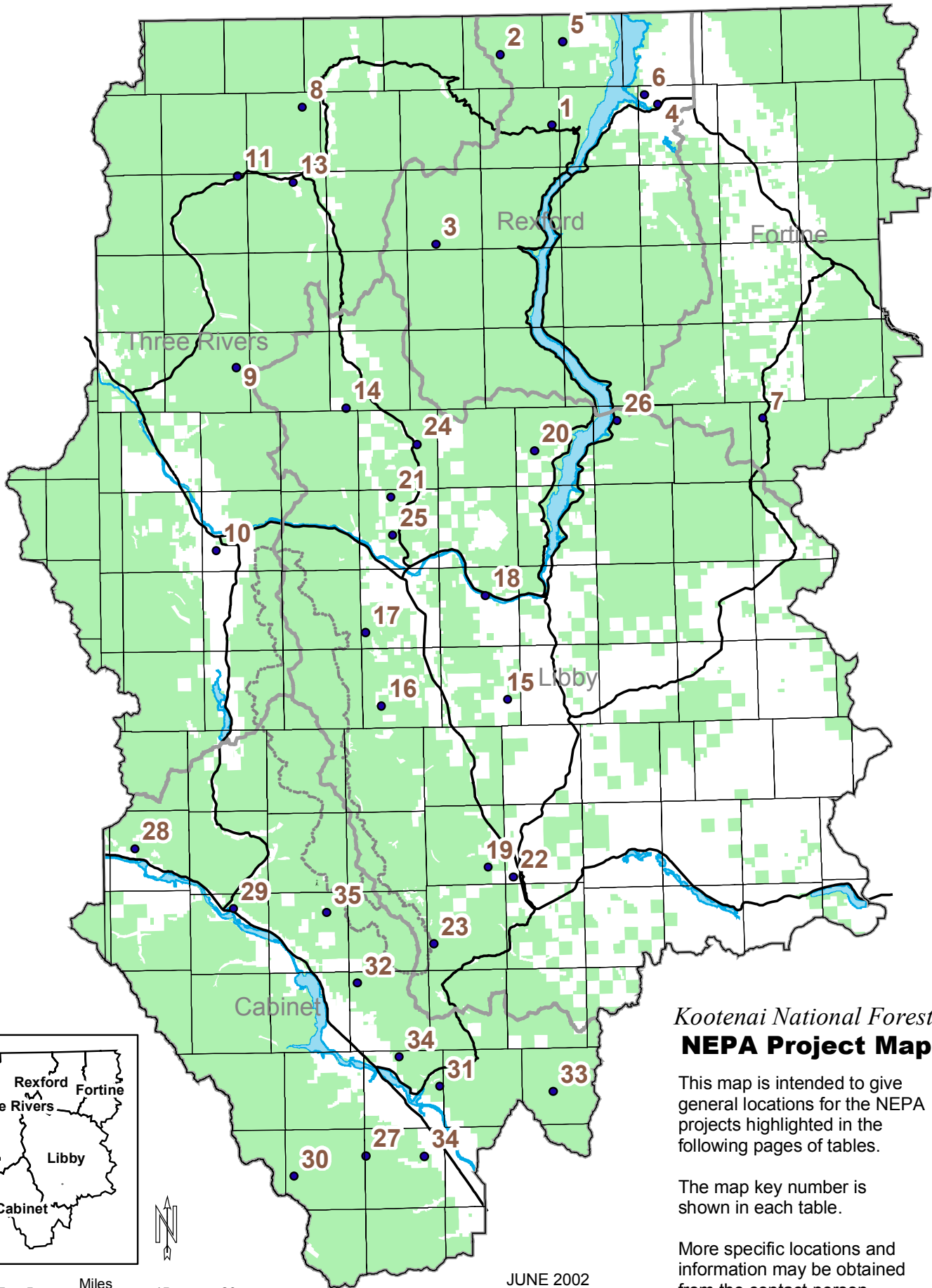
ANTICIPATED DECISION DATE: This is the best estimate of when the NEPA analysis will be completed. Sometimes we're not able to meet the date for various reasons but the schedule will be validated and updated each time we send it out.

YEAR ACTIVITY TO START ON THE GROUND: This is the best estimate of when ground disturbing activities would occur and/or contracts or permits would be offered.

CONTACT PERSON: This is the person at the Ranger District or Forest to contact for further information regarding the project.

THE PROJECT PLANNING PROCESS & WHERE YOU MIGHT FIT

ANALYSIS STEP	PARTICIPATION OPTIONS
Identify need for project – Forest Service, business, organization, or individual suggests a project	Bring need for a project to the attention of Forest Service
Develop detailed project proposal (Forest Service or other project proponent)	Develop project proposal
Scoping – solicit public comment on the proposal (how it might affect forest resources & uses; how the project could be done better). This defines the scope of environmental analysis needed and the range of alternatives that should be considered	Comment on proposal – suggest issues, concerns, alternatives or mitigation measures t
Develop range of alternatives based on the issues raised during scoping. One alternative is to stay with the status quo (No Action)	Suggest variations to the original proposal
Initiate public comment process (scoping), which includes a 45-day comment period for Draft EIS’s and 30-day comment period for most other projects. A copy of the environmental document will be mailed to those who requested a copy and to those who have participated in the environmental analysis process. A legal notice, requesting comments on appealable projects, will be published in the <i>Daily Inter Lake</i> , Kalispell, MT, which is our newspaper of record (36 CFR 215.5)	Provide comments on the environmental analysis. See 36 CFR 215.6 for description of information to provide
Notice of appealable decisions will be published in the newspaper of record. Copies of the decision document will be sent to those who submitted comments on the proposed action either before or during the comment period identified above (36 CFR 215.9)	Review decision: exercise option to appeal, when applicable, through administrative process
Appeal period will be open for 45 days following legal notice of decision in the newspaper except if no one expressed interest and there is no change from the proposed action. (36 CFR 215.10)	File Notice of Appeal (see section 36 CFR 215.14 for contents of an appeal) NOTE: Only those who commented through the process described above or expressed interest will be able to appeal. (36 CFR 215.11)
Implement the project	Contribute labor, equipment or funding
Monitor & evaluate project results	Provide feedback on the project



Kootenai National Forest
NEPA Project Map

This map is intended to give general locations for the NEPA projects highlighted in the following pages of tables.

The map key number is shown in each table.

More specific locations and information may be obtained from the contact person.

REXFORD RANGER DISTRICT, 1299 Hwy 93 N, Eureka, MT 59917 - Phone: 406-296-2536, Fax: 406-296-7188

NEWSPAPER OF RECORD: DAILY INTER LAKE, Kalispell, MT

MAP KEY	TYPE OF PROJECT	NAME OF PROJECT	LOCATION & PROJECT DESCRIPTION	NEPA STATUS	ANTICIPATED DECISION DATE	YEAR ACTIVITY TO START ON GROUND	CONTACT PERSON
1	Timber Sale, Fuels, Silviculture, Watershed Restoration	Gold/Boulder/Sullivan	T34-36N, R28, 29W, PMM, Lincoln Co., MT; Gold Creek, Boulder Creek, Sullivan Creek drainages. Includes road decommissioning, Forest Plan amendments, thinning, timber harvest, watershed restoration, prescribed burning.	Decision Signed 12/14/01	Completed	2002	Ron Komac 296-7130
2	Timber Sale, Fuels, Watershed Restoration	Young J	T37N, R29W, PMM, Lincoln Co., MT; Young Creek drainage. Includes 390 acres of timber harvest, 3300 MMBF (6612CCF), Forest Plan amendments for Open Road Density.	Decision Withdrawn – Continuing Analysis	October 2002	2002	Ron Komac 296-7130
3	Timber Sale, Fuels, Silviculture, Watershed Restoration	Lower Big Creek	T33-36N, R29-31W, PMM, Lincoln Co., MT; Big Creek drainage, including North Fork and South Fork of Big Creek. Includes prescribed fire, thinning, timber harvest and watershed restoration.	Developing Proposal	January 2003	2003	Chris Fox 296-7155
4	Recreation	Koocanusa Drawdown	T36-37N, R27, 28W, T32N, R29W, PMM, Lincoln Co., MT; mouth of the Tobacco River, Sophie Bay, mouth of Bristow Creek. Access and travel management within the reservoir drawdown area.	Developing Proposal	December 2002	2003	Cindy Hemry 296-7149
5	Special Uses	Young Creek State Access	T37N, R28W, S17. Young Creek Drainage. Road construction 200' on FS lands.	Analyzing Effects	June 2002	2002	Ron Komac 296-7130
6	Special Uses	Ingram Road Access	T36N, R27W S6 Douglas Hill Area. Private access requests.	Deferred			Ron Komac 296-7130

FORTINE RANGER DISTRICT, PO Box 116, Eureka, MT 59917 - Phone: 406-296-2536, Fax: 406-296-7188

NEWSPAPER OF RECORD: DAILY INTER LAKE, Kalispell, MT

MAP KEY	TYPE OF PROJECT	NAME OF PROJECT	LOCATION & PROJECT DESCRIPTION	NEPA STATUS	ANTICIPATED DECISION DATE	YEAR ACTIVITY TO START ON GROUND	CONTACT PERSON
7	Timber Sale, Fuels, Watershed Restoration	Fortine	T33N, R26W, S21-22, 27-29, 31-35; T32; T32N, R28W, S3-11, 14-36; T32N, R27W, S1-2, 11-14, 23-26; T31N, R26W, S3-5, 8-10, 15, and 16; Fortine Watershed. Timber harvest, prescribed burning, watershed restoration, road decommissioning. May include Forest Plan amendments.	Developing Proposal	December 2002	2003	Joleen Dunham 882-8325
*	Silviculture	2002 Pre-Commercial Thinning	District wide, not within Lynx habitat. Approximately 455 acres of thinning.	Decision Signed 4/14/02	Completed	2002	Scott Bates 882-8320
*	Range	Loon Roberts Allotment Term Grazing Permit	T34N, R26W, S11-15, 22-26; T34N, R26W, S1-3; T35N, R26W, S26, 33-35. Marl & Loon Lake areas west of Fortine, MT.	Analyzing Effects	September 2002	2002	Jan Jorgensen 882-8310

THREE RIVERS RANGER DISTRICT, 1437 Hwy 2 N, Troy, MT 59935 - Phone: 406-295-4693, Fax: 406-295-7410

NEWSPAPER OF RECORD: DAILY INTER LAKE, Kalispell, MT

MAP KEY	TYPE OF PROJECT	NAME OF PROJECT	LOCATION & PROJECT DESCRIPTION	NEPA STATUS	ANTICIPATED DECISION DATE	YEAR ACTIVITY TO START ON GROUND	CONTACT PERSON
8	Timber Sales, Fuels, Silviculture	Garver	Portions of T36N, R32W; T36N, R31W; T37N, R32W; and T37N, R31W; Lincoln County, MT; within the West Fork Yaak, Pete Creek, and Yaak Face drainages. May include prescribed burning in the West Fork Yaak Inventoried Roadless Area, changes to old growth designations and precommercial thinning.	Developing Alternatives	September 2002	2003	Kathy Mohar 295-7426
9	Silviculture	Timber Stand Improvement 2002	District-wide precommercial thinning, 18 units. White pine pruning in 3 units in the Cool Creek, Burnt Creek, and O'Brien Creek areas.	Analyzing Effects	June 2002	2002	Joe Hessekemper 295-7449
10	Fuels	Plateau	Portion of S20, T31N, R33W; Lincoln Co., MT; near Wilderness Plateau Subdivision. 52 acres.	Seeking Public Comment	June 2002	2003	Steve Straley 295-7481
11	Fuels	Whitetail Bog Burn	Portion of S31, T36N, R32W; Lincoln Co., MT. East of Whitetail Campground (across the Yaak River). 5 acres.	Seeking Public Comment	June 2002	2002 or 2003	Jeff Stevenson 295-7477
12	Fuels	Yaak Community Fuels	Portions of S30, T36N, R31W; Lincoln Co., MT; approx. 5 acres of fuels reduction work and hazard tree removal around the Yaak Community Hall.	Seeking Public Comment	July 2002	2002	Jeff Stevenson 295-7477
13	Special Uses/ Easement	Cool Creek Access	T35N, R32W, S 2,3,4, Lincoln County, MT; near Yaak, MT. Reconstruction of 1.5 miles of road across FS lands.	Analyzing Effects	July 2002	2002	Mark Natale 295-7431

LIBBY RANGER DISTRICT, 12557 Hwy 37 N, Libby, MT 59923 - Phone: 406-293-7773, Fax: 406-283-7531

NEWSPAPER OF RECORD: DAILY INTER LAKE, Kalispell, MT

MAP KEY	TYPE OF PROJECT	NAME OF PROJECT	LOCATION & PROJECT DESCRIPTION	NEPA STATUS	ANTICIPATED DECISION DATE	YEAR ACTIVITY TO START ON GROUND	CONTACT PERSON
14	Timber Sale	Pipestone	T34N, R32W, S 36; T34N, R31W, S11,14,15,21-36; T34N, R30W, S 1; T33N, R32W, S1,12,23-5,36; T33N, R31W, S1-36; T33N, R30W, S18-20,29-33; T32N, R32W, S1,12-13,24,25,36; T32N,R31W,S1-36; T32N, R30W, S5-10,15-21,29-32; T31N, R31W, S1-22,29,30; T31N, R30W, S4-9,17,18. Pipe Creek area. 13,170 CCF (5.4 MMBF). Includes Forest Plan ORD, VQO, movement corridors, and hiding cover amendments. Includes prescribed burning in the Gold Hill West Inventoried Roadless Area; 99 miles of road decommissioning; .47 miles of road construction on FS lands by Plum Creek; 2.18 miles of road reconstruction on FS lands by the FS and private landowners; 2 miles of snowmachine trail construction; ¼ mile of temporary road construction. May include .68 miles permanent road construction. Includes 4374 acres of prescribed burning.	DEIS Comment Period	July 2002	2003	Tim Chamon 283-7568

LIBBY RANGER DISTRICT, continued

MAP KEY	TYPE OF PROJECT	NAME OF PROJECT	LOCATION & PROJECT DESCRIPTION	NEPA STATUS	ANTICIPATED DECISION DATE	YEAR ACTIVITY TO START ON GROUND	CONTACT PERSON
15	Timber Sale Silviculture	South Mcswede	T29N, R30W, S28,29,32-34; T28N, R30W, S1,2,9-15,22-27,33-36; T28N, R29W, S7,8,18; T27N, R30W, S4,5,9 (McMillan area). 5975 CCF (2.45 MMBF) timber harvest. Includes 590 acres of precommercial thinning, 3 miles of temp road construction, private land access, and 9 miles of road decommissioning.	Analyzing Effects	October 2002	2003	Tim Charnon 283-7568
16	Fuels	Treasure Interface Stewardship Project	T30N, R31W, S22, 27, 28 and 33-35. Granite Lake Road area. Approximately 765 acres of commercial thinning to reduce fuel loads along Granite Lake Road and adjacent subdivisions.	Decision Signed 4/26/02	Complete	2002	Tim Charnon 283-7568
*	Silviculture	Tree Pruning and Thinning	Across Libby District. White pine pruning 1420 acres, 575 acres thinning.	Analyzing Effects	March 2002	2002	Tim Charnon 283-7568
*	Minerals	Mineral Material Sources	Libby Ranger District. Expansion and reclamation of 79 existing gravel pits.	Deferred			Bobbie Lacklen 283-7518
17	Minerals	Prospect Hill	T30N, R31W, S33,32,29. Prospect Hill. Minerals exploration. Includes opening a closed road, construction of less than 1 mile of road and re-opening 2 closed mine portals.	Seeking Public Comment	January 2003	2003	Bobbie Lacklen 283-7518
18	Recreation	Re-Reg	T30N, R30W, S10. On Kootenai River next to Highway 37 at the 8.7 mile post. Boat ramp, parking area and restroom construction. Existing ramp will be closed to vehicle traffic.	Analyzing Effects	June 2002	2004	Bobbie Lacklen 283-7518
19	Recreation	Bear Creek X-C Ski Trail Maintenance	T29N, R31W, S13. Bear Creek cross country ski area. 1.5 miles trail maintenance.	Analyzing Effects	June 2002	2002	Jon Jeresek 283-7525
20	Special Uses	Plum Creek Road Request	NW 1/4, NW 1/4, S20, 21, 28, 30, R29W. Barron Cr. area. Reconstruction of less than a mile of road on FS lands.	Deferred			Bobbie Lacklen 283-7518
21	Special Uses	Bull Creek Water Line	T31N, R31W, S4. 300 feet on FS lands of water line to deliver water from Bull Creek to a reservoir on private property. Proponent has acquired water rights.	Deferred			Bobbie Lacklen 283-7518
22	Special Uses	Beebe Road Request	T29N, R30W, S31. Libby Creek area. Includes access of 400 feet of existing road on FS lands.	Analyzing Effects	June 2002	2002	Bobbie Lacklen 283-7518
23	Special Uses	Bear Lakes Access Request	T26N, R30W, S30. Silver Butte area. Livestock use of existing trail and 500 feet of associated trail construction accessible to livestock. Trail accesses private lands.	Analyzing Effects	July 2002	2002	Denise Beck 283-7504
24	Special Uses	Burrier Road Request	Included in Pipestone DEIS. Widening of 200 feet of existing road on FS lands.	DEIS Comment Period	July 2002	2003	Tim Charnon 283-7568
25	Special Uses	Young Road Request	Included in Pipestone DEIS. Includes reconstruction of 1.2 miles of existing road on FS lands.	DEIS Comment Period	July 2002	2003	Tim Charnon 283-7568
26	Special Uses	Spring Creek Road Access	T32N, R28W, S5. Volcour Gulch area. Includes ¼ mile road construction on FS land.	Analyzing Effects	November 2002	2002	Bobbie Lacklen 283-7518

MAP KEY	TYPE OF PROJECT	NAME OF PROJECT	LOCATION & PROJECT DESCRIPTION	NEPA STATUS	ANTICIPATED DECISION DATE	YEAR ACTIVITY TO START ON GROUND	CONTACT PERSON
27	Timber Sale	Whitepine Creek	T22N, R32W, S4,5; T23N, R31W, S3-11, 14-24, 27-30; T23N, R32W, S1-3, 10-17, 20-29, 31-34; T24N, 31W, S31-33; T24N, R32W, S24-26, 35, 36, PMM. Whitepine Creek drainage south of Trout Creek, MT. 33,000 CCF (15MMBF) timber harvest. Project includes up to 52 miles road decommissioning. Possible Forest Plan amendments for management of old growth, open road densities, cavity nesting habitat. May include Regional Forester approval of 2 openings over 40 acres.	DEIS Completed, FEIS Expected June 2002	June 2002	2003	John Gubel 827-0732
28	Timber Sale and Fuels	Fat Blue Eddy	T27N, R34W, S7-10, 15-18, 21-23, 24,25; PMM; Blue Creek and Big Eddy Creek drainages near Heron, MT. Fuel reduction in areas adjacent to private property, some timber harvest, precommercial thinning.	Seeking Public Comment	September 2003	2003	John Head 827-0732
*	Silviculture	Whitepine Pruning	Various plantations across district. 2800 acres. Branch pruning to reduce impacts from blister rust disease.	Analyzing Effects	June 2002	2002	Gene Newell 827--0727
*	Silviculture	Seed Production Area Maintenance	Various plantations across district. Miller Creek 42 acres, Government Mountain 30 acres, Burten 18 acres. Brush and small tree thinning to promote cone and crown growth.	Analyzing Effects	June 2002	2002	Peter Powers 827-0721
*	Silviculture	Vermilion Mistletoe Sanitation	Various plantations in the Vermilion River drainage 127 acres. Girdling and killing mistletoe-infected larch in or near plantations to prevent infection of plantation trees and create snags for wildlife.	Analyzing Effects	June 2002	2002	Peter Powers 827-0721
29	Recreation	Bull River and Marten Creek Campground Improvement	T26N; R32W; S3, 10; PMM. T25N; R32W; S32; PMM. Bull River and Marten Creek camping areas. Expanded parking, day use trail rehabilitation, shelter construction.	Decision Signed 4/02	Complete	2002	Bruce Haflich 827-0730
30	Recreation	East Fork Trout Creek Trail Improvement	T23N; R32W; S18-19; PMM. East Fork Trout Creek. 1.5 miles trail improvement.	Analyzing Effects	June 2002	2002	Bruce Haflich 827-0730
31	Recreation	Water Hill Trail Improvement	T24N; R31W; S23, 24; PMM. Water Hill. 2 miles trail improvement.	Analyzing Effects	July 2002	2003	Bruce Haflich 827-0730
*	Fisheries	South Fork Bull River Watershed Restoration	T28N; R33W; S25; PMM T27N; R32W; S9; PMM. South Fork Bull River Watershed.	Analyzing Effects	July 2002	2002-2003	Doug Grupenhoff 827-0741
32	Fuels	Green Mountain Fuel Reduction	T25N; R32W; S1, 2, 11, 12; PMM. Green Mountain. Fuel reduction adjacent to private property with some timber harvest.	Seeking Public Comment	September 2002	October 2002	Kurt Werst 827-0712

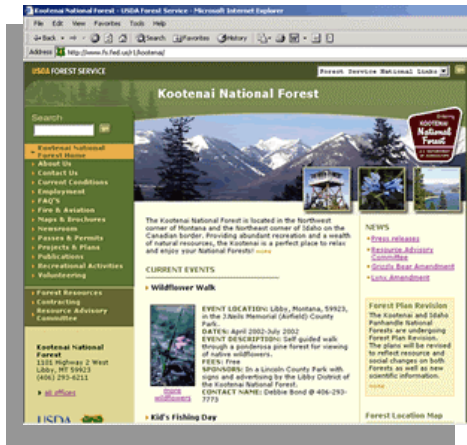
CABINET RANGER DISTRICT, continued

MAP KEY	TYPE OF PROJECT	NAME OF PROJECT	LOCATION & PROJECT DESCRIPTION	NEPA STATUS	ANTICIPATED DECISION DATE	YEAR ACTIVITY TO START ON GROUND	CONTACT PERSON
*	Fuels	Green Mountain Fuel Reduction	T25N; R32W; S1, 2, 11, 12; PMM. Green Mountain. Fuel reduction adjacent to private property with some timber harvest.	Seeking Public Comment	September 2002	October 2002	Kurt Werst 827-0712
33	Wildlife & Fuels	Upper Vermilion Elk Habitat Improvement	T24,25 N; R29W; S35,1,2,9,10,11,14,15,16,21,22; PMM. Upper Vermilion. Approx. 1300 acres of natural fuels burning.	Decision Signed 5/16/02	Complete	May 2002	Steve Johnsen 827-0731
*	Special Uses	Outfitter/Guide Priority Permits	Various areas across district.	Decision Signed 4/22/02	Complete	May 2002	Bruce Haflich 827-0730
*	Special Uses	Special Use Permit Renewals	Various areas across district. Multiple permit renewals primarily for water systems.	Analyzing Effects	June 2002	2002	Bruce Haflich 827-07330
34	Land Exchange	Cox Land Exchange	T22N; R30W; S5 (FS), T23N; R31W; S11 (Private).	Deferred			Bruce Haflich 827-07330

KOOTENAI SUPERVISORS OFFICE, 1101 US Hwy 2 West, Libby, MT 59923 - Phone: 406-293-6211, Fax: 406-293-6418

NEWSPAPER OF RECORD: DAILY INTER LAKE, Kalispell, MT

MAP KEY	TYPE OF PROJECT	NAME OF PROJECT	LOCATION & PROJECT DESCRIPTION	NEPA STATUS	ANTICIPATED DECISION DATE	YEAR ACTIVITY TO START ON GROUND	CONTACT PERSON
35	Minerals	Rock Creek (Sterling Mine)	T26N, R32W. Includes Forest Plan amendments. Copper/silver mine near Noxon, MT.	Decision Withdrawn-Continuing Analysis	August 2002	2002	John McKay 283-7691
*	Forest Plan amendment	Forest Plan amendments for Motorized Access Management within the Selkirk/Cabinet-Yaak Grizzly Bear Recovery Zones	Portions of the Lolo, Idaho Panhandle and Kootenai National Forests. Motorized access management.	FEIS Released 4/14/02	August 2002	2002	Kirsten Kaiser 283-7659
*	Forest Plan amendment	Northern Rockies Lynx Amendment	18 National Forests in Regions 1, 2 and 4. Lynx management.	DEIS Expected 8/02	October 2002	2002	John Haber 329-3399
*	Forest Plan Revision	Kootenai and Idaho Panhandle National Forests Forest Plan Revision	Forest-wide. Revision of Forest Plan management direction.	Seeking Public Comment until 12/1/02	2005	2005	Joe Krueger 283-7774



The **Kootenai National Forest** is on the web!

Go to www.fs.fed.us/r1/kootenai/ for information on recreational opportunities, current events, publications, contracting, fire, forest resources, press releases and lots more.

Check back regularly, as we continue to expand opportunities for public involvement on our website!

This document is available on our website at www.fs.fed.us/r1/kootenai/projects/. Using the Internet is the most efficient, current and cost effective way of receiving information. Our future goal is to have all of our public information available to you on this website. Sign up today to subscribe to the SOPA by visiting this website. You will receive an email message each time the SOPA is published. If you don't have a computer or would like to continue to receive the SOPA by regular mail, please return the enclosed response form.

You will be removed from our SOPA "regular-mail" mailing list if we do not receive a response from you by July 1, 2002.

Please continue to send the SOPA to me via "regular mail".

Name: _____

Organization: _____

Mailing Address: _____

City: _____ State: _____ Zip _____