



United States
Department of
Agriculture

Forest
Service

Kootenai N.F.

1101 US Highway 2 West
Libby MT 59923

File Code: 1950

Date: June 1, 2001

The Kootenai National Forest is involved in many programs and activities. Enclosed you will find information about projects for which we have a specific proposal, and are in the process of analyzing as directed by the National Environmental Policy Act (NEPA).

The projects are arranged in a table format and are sorted by Ranger District, by type of project, and by date expected for each decision for each project. There are several points in the planning process during which you can be the most helpful and influential, but exact steps and timing may vary depending on the type and complexity of the project. For example, the whole planning process may only take a few days for small, non-complex projects, or several years for large complex projects such as a major mining proposal. Nevertheless, there are some basic steps we go through for every project. The enclosure labeled "Project Planning Process and Where You Fit In" describes these steps and identifies what you can do to be involved. It is important for you to understand this process so that you may receive the environmental documents in which you are interested. I want to stress that your participation in these activities, in a timely manner, can promote better decisions by helping us better understand alternatives to our proposals and to evaluate their implications on the land and the adjacent communities.

If you would like more information on a specific project, please contact the district or forest contact person listed for each project.

Sincerely,

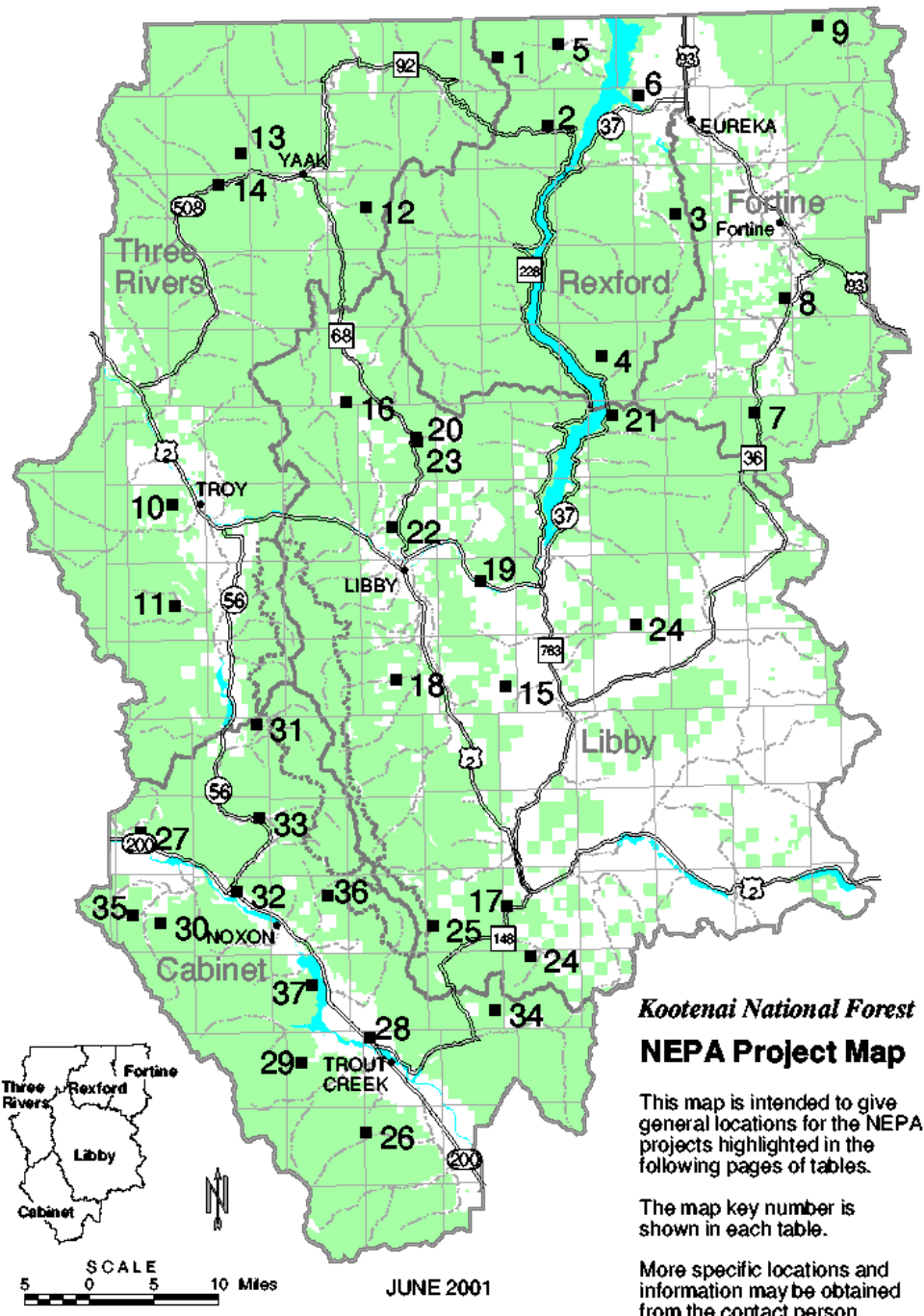
BOB CASTANEDA
Forest Supervisor

enclosure



THE PROJECT PLANNING PROCESS & WHERE YOU MIGHT FIT

| ANALYSIS STEP | PARTICIPATION OPTIONS |
|---|--|
| Identify need for project - Forest Service, business or individual suggests a project | Bring need for a project to the attention of Forest Service |
| Develop detailed project proposal (Forest Service or other project proponent) | Develop project proposal |
| Scoping - solicit public comment on the proposal (how it might affect forest resources & uses; how the project could be done better). This defines the scope of environmental analysis needed and the range of alternatives that should be considered | Comment on proposal - suggest issues, alternatives or mitigation measures to reduce impacts on the environment |
| Develop range of alternatives based on the issues raised during scoping. One alternative is to stay with the status quo (No Action) | Suggest variations to the original proposal |
| Initiate public comment process which includes a 45 day comment period for Draft EIS's and 30 day comment period for EA's and timber sales that can be categorically excluded. A copy of the EIS or EA will be mailed to those who requested a copy and to those who have participated in the environmental analysis process. A legal notice, requesting comments, will be published in the Daily Interlake, Kalispell, MT, which is our newspaper of record (36 CFR 215.5) | Provide comments on the environmental analysis. See 36 CFR 215.6 for description of information to provide |
| Notice of decision will be published in the newspaper of record. Copies of the decision document will be sent to those who submitted comments on the proposed action either before or during the comment period identified above (36 CFR 215.9) | Review decision: exercise option to appeal through administrative process |
| Appeal period will be open for 45 days following legal notice of decision in the newspaper except if no one expressed interest and there is no change from the proposed action. (36 CFR 215.10) | File Notice of Appeal (see section 36 CFR 215.14 for contents of an appeal) NOTE: Only those who commented through the process described above or expressed interest will be able to appeal. (36 CFR 215.11) |
| Implement the project | Contribute labor, equipment or funding |
| Monitor & evaluate project results | Provide feedback on the project |



QUARTERLY SCHEDULE OF PROPOSED ACTIONS - June 2001

REXFORD RANGER DISTRICT, 1299 Highway 93 North, Eureka, MT 59917 - Phone: 406-296-2536, Fax: 406-296-2588 **NEWSPAPER OF RECORD:** DAILY INTERLAKE, Kalispell, MT

| MAP KEY | TYPE OF PROJECT | NAME OF PROJECT | LOCATION | NEPA STATUS | ANTICIPATE D DECISION DATE | YEAR ACTIVITY TO START ON GROUND | CONTACT PERSON |
|---------|--|---------------------------------|---|-------------------------|----------------------------|----------------------------------|----------------|
| 1 | Timber Sale, Prescribed Burning, Watershed Restoration | Young J | T37N, R29W, PMM, Lincoln Co., MT; Young Creek drainage. | Seeking Public Comment | July 2001 | 2001 | Ron Komac |
| 2 | Timber Sale, Prescribed Burning, Thinning, Watershed Restoration | Gold/Boulder/Sullivan | T34-36N, R28, 29W, PMM, Lincoln Co., MT; Gold, Boulder, and Sullivan drainages. May include road decommissioning. Includes Forest Plan Amendments | Seeking Public Comment. | September 2001 | 2001 | Ron Komac |
| 3 | Timber Sale, Prescribed Burning, Watershed Restoration | Pink Stone EIS | T 34-36N, R27-29W, PMM, Lincoln Co., MT: Pinkham Creek drainage, may include road decommissioning. Includes Forest Plan Amendments. | Seeking Public Comment | September 2001 | 2001 | Ron Komac |
| 4 | Prescribed Burning | Ten Mile 01 | T33N R28W SEC's 17, 20, and 21, PMM, Lincoln Co., MT: Tenmile Creek area. | Completed | March 2001 | 2001 | Sheila Braun |
| 5 | Special Uses | Young Creek FRTA – State Access | T37N, R28W, Sec 17. Young Creek Drainage | Seeking Public Comment | July 2001 | 2001 | Jim Kilroy |
| 6 | Special Uses | Ingram Road Access | T36 N, R 27 W Sec 6 Douglas Hill Area | Seeking Public Comment | August 2001 | 2001 | Jim Kilroy |

FORTINE RANGER DISTRICT, P.O. Box 116, Fortine, MT 59918 - Phone: 406-882-4451, Fax: 406-882-4835 **NEWSPAPER OF RECORD:** DAILY INTERLAKE, Kalispell, MT

| MAP KEY | TYPE OF PROJECT | NAME OF PROJECT | LOCATION | NEPA STATUS | ANTICIPATE DECISION DATE | YEAR ACTIVITY TO START ON GROUND | CONTACT PERSON |
|---------|-------------------------|---|--|-------------------------|--------------------------|----------------------------------|----------------|
| 7 | Timber Sale | Fortine Timber Sales and Associated Activities EIS; 22000-46000 CCF (9-19 MMBF) | T33N, R26W, Sec. 21-22, 27-29, 31-35; T32; T32N, R28W. Sections 3-11, 14-36; T32N, R27W, Sections 1-2, 11-14, 23-26; T31N, R26W, Sections 3-5, 8-10, 15, and 16. | Developing Proposal | December 2001 | 2002 | Joleen Dunham |
| * | Pre-Commercial Thinning | FY2001 District-wide Pre-Commercial Thinning Approx. 700 acres | District-wide, not within Lynx habitat. | Decision Signed 3/13/01 | Completed | 2001 | Scott Bates |
| 8 | Wildlife | CastleRock Apsen Restoration Project | T34N, R26W, Section 25 | Decision Signed 5/17/01 | Completed | 2001 | Toby Spribille |
| 9 | Road Uses | Rick Creek Bridge Construction | T37N, R25W, Section 10 | Decision Signed 5/17/01 | Completed | 2001 | Don Tincher |

| MAP KEY | TYPE OF PROJECT | NAME OF PROJECT | LOCATION | NEPA STATUS | ANTICIPATED DECISION DATE | YEAR ACTIVITY TO START ON GROUND | CONTACT PERSON |
|---------|--|--|---|-------------------------------------|---------------------------|----------------------------------|------------------|
| 10 | Timber Sale | Troy Beetle Salvage | Sec. 20, T34N, R34W; Sec. 32, 33, T34N, R33W; Sec. 20, 31, 32, T33N, R33W; Sec. 3, 10, 15, T33N, R34W; Sec. 16, 18-20, 29, T32N, R33W; Sec. 13, T32N, R34W; Sec. 2, T32N, R35W; Sec. 2, 4, 9, T31N, R33W; Sec. 1, 12, T31N, R32W; Sec. 2, 3, 10, 11, 14, 15, 23, 24, 26, T31N, R34W; Lincoln Co, Montana; and Sec. 10, T60N, R3E, Boundary Co, Idaho. Includes Forest Plan Amendment. | Notice of Decision in Paper 4/26/01 | Completed | 2001 | Kathy Mohar |
| 11 | Timber Sale, Prescribed Burning, Thinning, Watershed Restoration | Spar and Lake Subunits Forest Health Project | T28N - T31N, R33W and 34W, PMM, Lincoln Co., MT; Iron, Keeler, Twilight, Stanley, Ross, Camp, Madge, Spring, and Noggle drainages. Includes road decommissioning. Prescribed burning activities are proposed within the Scotchman Peaks Inventoried Roadless Area and/or proposed wilderness area. Includes Forest Plan Amendment. | Notice of Decision in Paper 4/27/01 | Completed | 2001 | Kathy Mohar |
| 12 | Timber Sale, Planting, Watershed Improvement | Kelsey-Beaver | Portions of T35N, R32W; T35N, R31W; and T36N, R30W; Lincoln County, Montana. Also includes planting in Mt. Henry Roadless Area. May include Forest Plan Amendment, openings over 40 acres, and road decommissioning.. | Developing Alternatives | October 2001 | 2002 | Mike Giesey |
| 13 | Precommercial Thinning, white pine pruning | Timber Stand Improvement 2001 | T37N, R31W, Secs. 31 and 32; T36N, R32W, Secs. 1 & 6; T36N, R32W, Secs. 19, 20, 21, 28; T35N, R32W, Secs. 5-8; T33N, R34W, Sec. 29; T61N, R3E, Sec. 34; T29N, R34W, Sec. 12. | Decision Signed 5/14/01 | Completed | 2001 | Joe Hessenkemper |
| 14 | Special Use Permit/Easement | Cool Creek Access | T35N, R32W, Secs. 2, 3, 4, Lincoln County, Montana; across Yaak River from town of Yaak. | Analyzing Effects | August 2001 | 2001 | Mark Natale |

| MAP KEY | TYPE OF PROJECT | NAME OF PROJECT | LOCATION | NEPA STATUS | ANTICIPATED DECISION DATE | YEAR ACTIVITY TO START ON GROUND | CONTACT PERSON |
|---------|-----------------|--|---|------------------------|---------------------------|----------------------------------|----------------|
| 15 | Timber Sale | South McSwede 5975 CCF (2.45 MMBF). Includes 590 acres of precommercial thinning, 3 miles of temp road construction, private land access, and 9 miles of road decommissioning. | T29N,R30W, Sections 28,29,32-34; T28N,R30W, Sections 1,2,9-15,22-27,33-36; T28N, R29W, Sections 7,8,18; T27N, R30W, Sections 4,5,9. | Seeking Public Comment | September 2001 | 2001 | Tim Chamon |
| 16 | Timber Sale | Pipestone 13,170 CCF (5.4 MMBF). May include Forest Plan ORD amendment. Includes prescribed burning in the Gold Hill West Roadless Area, 65 miles of road decommissioning, .47 miles of road construction on FS lands by Plum Creek, 2.18 miles of reconstruction on FS lands by the FS and private landowners, 1000 feet of snowmachine trail construction, and .60 miles of temporary road construction. | T34N, R32W, Section 36; T34N, R31W, Sections 11,14,15,21-36; T34N, R30W, Section1; T33N, R32W, Sections 1,12,23-5,36; T33N, R31W, Sections 1-36; T33N, R30W, Sections 18-20,29-33; T32N, R32W, Sections 1,12-13,24,25,36; T32N,R31W,Sections 1-36; T32N, R30W, Sections 5-10,15-21,29-32; T31N, R31W, Sections 1-22,29,30; T31N, R30W, Sections 4-9,17,18. Pipe Creek area. | Analyzing Effects | October 2001 | 2001 | Tim Chamon |

LIBBY RANGER DISTRICT: continued

| MAP KEY | TYPE OF PROJECT | NAME OF PROJECT | LOCATION | NEPA STATUS | ANTICIPATE DECISION DATE | YEAR ACTIVITY TO START ON GROUND | CONTACT PERSON |
|----------------|-------------------------|---|--|------------------------|---------------------------------|---|-----------------------|
| 17 | Fuels | Silver Butte underburning of 1000 Acres. | T26N, R30W, Sections 13, 14, 24. T26N, R29W, Sections 17, 18. Silver Butte area. | Complete | Decision Memo 5/11/01 | 2002 | Glen Gibson |
| * | Silviculture | Tree pruning. Approximately 800 acres. | Libby District | Analyzing Effects | December 2001 | 2001 | Tim Chamon |
| * | Silviculture | Precommercial thinning. Approximately 3385 acres. | Libby District | Analyzing Effects | July 2001 | 2001 | Tim Chamon |
| 18 | Recreation | Flower Creek parking lot expansion. | T30N, R31W, Section 21. Flower cross country ski area. | Seeking Public Comment | July 2001 | 2001 | Jon Jeresek |
| 19 | Recreation/ Minerals | Re-Reg. Mineral material removal associated with boat ramp, parking and restroom construction. | T30N, R30W, Section 10. Adjacent to Highway 37 at the 8.7 mile post. | Analyzing Effects | January 2002 | 2001 | Bobbi Lacklen |
| * | Minerals | Mineral Material Sources. Expansion and reclamation of 79 existing gravel pits. | Libby Ranger District | Analyzing Effects | July 2002 | 2002 | Bobbi Lacklen |
| 20 | Special uses | Beebe road request. Includes reconstruction of 400 feet of existing road on FS lands. | T32N, R31W, Section 14. Pipe Creek area. May be included in Pipestone decision. | Analyzing Effects | August 2001 | 2001 | Dick Harlow |
| 21 | Special uses | Spring Creek road access. Includes 1/4 mile road construction. | T32N, R28W, Section 5. Volcour Gulch area. | Seeking Public Comment | August 2001 | 2001 | Dick Harlow |
| 22 | Special uses | Young road request. Includes reconstruction of 1.2 miles of existing road on FS lands. Formerly known as Pipe Creek private road. | T31N, R31W, Section 21. Pipe Creek area. May be included in Pipestone decision. | Analyzing Effects | August 2001 | 2001 | Dick Harlow |
| 23 | Special uses | Burrier road request. Includes reconstruction (widening) of 200 feet of existing road on FS lands. | T32N, R31W, Section 14. Pipe Creek area. May be included in Pipestone decision. | Analyzing Effects | October 2001 | 2001 | Dick Harlow |
| 24 | Special uses | Installation of 7 miles of fiberoptic lines where existing lines occur. May include road improvements. | T25N, R29W, Sections 11,12; T25N, R30W, Sections 5,6; T26N, R30W, Sections 33, 34, 35, 36; T26N, R31W, Sections 17,18, 19, 30; T30N, R27W, Section 34; T30N, R28W, Sections 2,3,4,5,12. Dunn Creek, Canyon Creek and Silver Butte areas. | Seeking Public Comment | October 2001 | 2001 | Dick Harlow |
| 25 | Special uses | Bear Lakes access request. Livestock use of existing trail and 200 feet of associated trail construction accessible to livestock. Trail accesses private lands. | T26N, R30W, Section 30. Silver Butte area. | Seeking Public Comment | December 2001 | 2001 | Dick Harlow |

CABINET RANGER DISTRICT, 2693 Highway 200, Trout Creek, MT 59874 - Phone: 406-827-3533, Fax: 406-827-3203 **NEWSPAPER OF RECORD: DAILY INTERLAKE, Kalispell, MT**

| MAP KEY | TYPE OF PROJECT | NAME OF PROJECT | LOCATION | NEPA STATUS | ANTICIPATED DECISION DATE | YEAR ACTIVITY TO START ON GROUND | CONTACT PERSON |
|---------|-------------------------|---|--|--|---------------------------|----------------------------------|------------------|
| 26 | Timber Sale | Whitepine Creek EIS 33,000 CCF (15MMBF). Project includes up to 52 miles road decommissioning. Possible Forest Plan amendments for management of old growth, open road densities, cavity nesting habitat. May include Regional Forester approval of openings over 40 acres. NOI published April 23, 1999. | T22N, R32W, Sec 4,5; T23N, R31W, Sec 3-11, 14-24, 27-30; T23N, R32W, Sec 1-3, 10-17, 20-29, 31-34; T24N, 31W, Sec 31-33; T24N, R32W, Sec 24-26, 35, 36. Whitepine Creek Drainage south of the town of Trout Creek. | Draft EIS expected June 2001 | October 2001 | 2002 | John Gubel |
| 27 | Timber Sale | Fat Blue Eddy EA | T27N, R34W, Sec 7-10, 15-18, 21-23, 24,25; Blue Cr., and Big Eddy Cr. drainages near Heron, MT | Developing Proposed Action, and public scoping | May 2002 | 2002 | John Head |
| 28 | Fuel Reduction | Administrative Site Fuel Reduction | T24N, R31W, Sec 31 Cabinet Ranger Station Administrative Site | Analyzing Effects | June 2001 | 2001 | John Head |
| 29 | Fuel Reduction | Tuscor Face Pine Restoration | T24N, R32W, Sec 17, 18, 19, 20 Minton Peak Area | Analyzing Effects | June 2001 | 2001 | John Head |
| 30 | Fuel Reduction | Elk Creek Rural Interface Natural Fuels Reduction | T26N, R34W, Sec 16, 20, 21, 28, 33; T25N, R34W, Sec 2, 3 Elk Creek Area | Analyzing Effects | June 2001 | 2001 | Robert Lambrecht |
| * | Pre-commercial Thinning | Cabinet District Pre-commercial Thinning FY01 | Various locations. Approximately 240 acres. | Public comment period ends 6/4/01 | June 2001 | 2001 | Gene Newell |
| 31 | Recreation | Northfork Bull/ Middle Fork Bull Trailhead Expansion | T28N, R33W, Sec 1 & 11, Bull River Area. | Analyzing Effects | June 2001 | 2001 | Bruce Haflich |
| 32 | Recreation | Bull River Campground Riverbank Stabilization | T28N, R33W, Sec 1 & 11, Bull River Area. | Analyzing Effects | June 2001 | 2001 | Bruce Haflich |
| 33 | Recreation | Berray Mountain Trail #967 Reroute Construction (1/2 mile) | T27N, R33W, Sec 12 | Analyzing Effects | July 2001 | 2001 | Bruce Haflich |
| 34 | Recreation | Elk Lake Trailhead Improvement | T25N, R30W, Sec 25 Simms Creek area, Vermilion River | Analyzing Effects | July 2001 | 2001 | Bruce Haflich |
| 35 | Special Uses | West Fork Elk Creek Telephone Line | T26N, R34W, Sec 20, Elk Creek Area | Analyzing Effects | June 2001 | 2001 | Bruce Haflich |

KOOTENAI SUPERVISORS OFFICE, 1101 US Hwy 2 West, Libby, MT 59923 - Phone: 406-293-6211, Fax: 406-293-6418 **NEWSPAPER OF RECORD: DAILY INTERLAKE, Kalispell, MT**

| MAP KEY | TYPE OF PROJECT | NAME OF PROJECT | LOCATION | NEPA STATUS | ANTICIPATED DECISION DATE | YEAR ACTIVITY TO START ON GROUND | CONTACT PERSON |
|---------|-------------------------------------|--|--|-----------------------------------|---------------------------|----------------------------------|---------------------------|
| 36 | Minerals | STERLING; Copper/ Silver Mine | T26N, R32W; Rock Creek. Includes FP amendments | Responding to Comments | July 2001 | 2001 | John McKay |
| 37 | Land Exchange | Stimson Land Exchange | Portions of: T29N, R33W, Sec19; T31N, R34W, Sec 2; T32N, R34W, Sec 26; | Not Appealed | March 27, 2001 | 2001 | Tom Grabinski |
| * | Fuels | Forestwide Fuels Reduction | Forestwide (site specific locations available upon request) | Revising EA | August 2001 | 2001 | Joe Krueger |
| * | Grizzly Bear Forest Plan Amendments | Forest Plan Amendments For Access Management in Grizzly Bear Habitat Within Selkirk/Cabinet-Yaak Recovery Zones. | Portions of Lolo NF, Idaho Panhandle NF, and Kootenai NF. | Scoping period ends June 11, 2001 | February 2002 | 2002 | Rob Carlin (406-882-4451) |